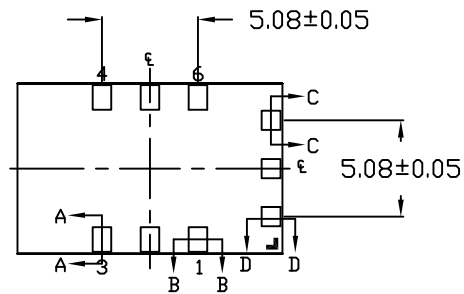
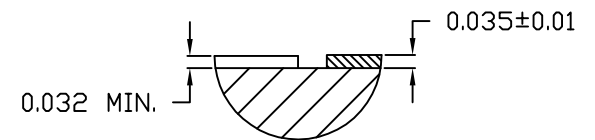


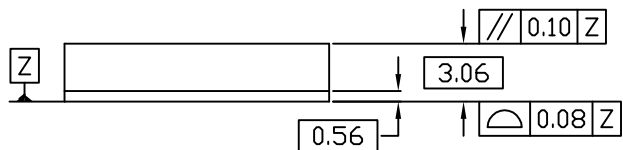
TOP VIEW



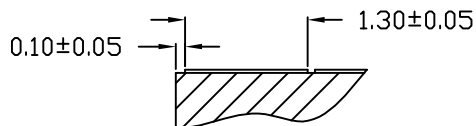
BOTTOM VIEW



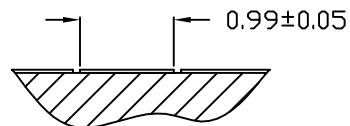
DETAIL "A"  
SOLDERMASK AND PAD HEIGHT



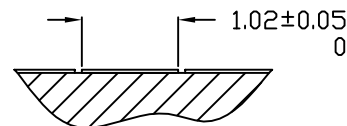
SIDE VIEW



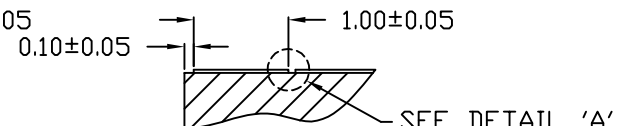
SECTION A-A



SECTION B-B



SECTION C-C



SECTION D-D

NOTES:

1. DIMENSIONING AND TOLERANCES PER ASME Y14.5M-1994.
2. ALL DIMENSIONS ARE IN MILLIMETERS UNLESS SPECIFIED OTHERWISE.
3. BILATERAL TOLERANCE ZONE IS APPLIED TO EACH SIDE OF THE PACKAGE BODY.
4. A1 CORNER MUST BE IDENTIFIED BY INK/LASER MARK ON TOP PACKAGE, AND METALLIZED MARKINGS ON BOTTOM PACKAGE
5. MATERIAL MUST COMPLY WITH BANNED AND RESTRICTED SUBSTANCES SPEC# 10-0131
6. ALL DIMENSIONS APPLY TO BOTH LEADED (-) AND PbfREE (+) PKG. CODES.
7. PACKAGE CODE: L949A-1



TITLE:  
PACKAGE OUTLINE,  
9L LGA, 14.00x9.00mm BODY

APPROVAL	DOCUMENT CONTROL NO. 21-0265	REV. B	1/1
----------	---------------------------------	-----------	-----

-DRAWING NOT TO SCALE-