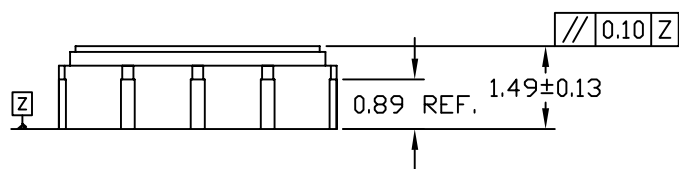
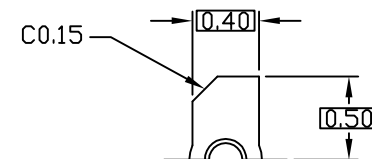
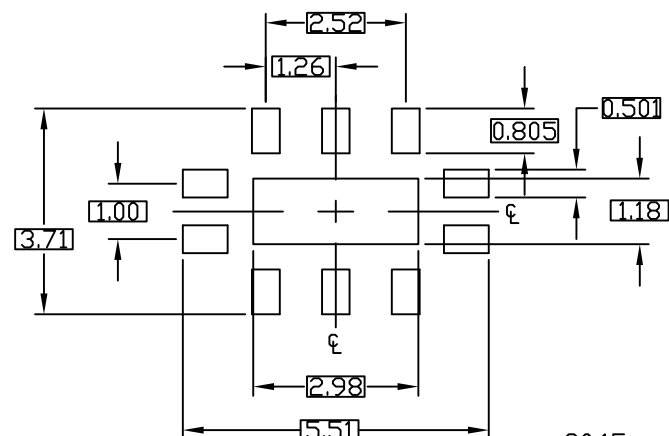
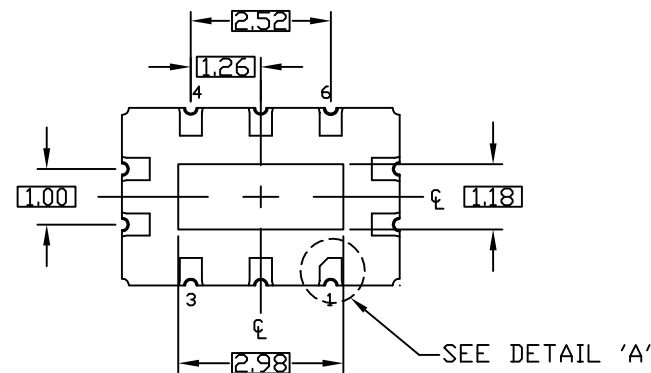


TOP VIEW



SIDE VIEW



DETAIL 'A'

NOTES:

1. ALL DIMENSIONS ARE IN MILLIMETERS UNLESS OTHERWISE SPECIFIED.
2. MATERIAL MUST COMPLY WITH BANNED AND RESTRICTED SUBSTANCES SPEC # 10-0131.
3. DIMENSIONING AND TOLERANCES PER ASME Y14.5M-1994.
4. BILATERAL TOLERANCE ZONE IS APPLIED TO EACH SIDE OF THE PACKAGE BODY.
5. A1 CORNER MUST BE IDENTIFIED BY INK/LASER MARK ON TOP PACKAGE, AND CHAMFERED PAD ON BOTTOM PACKAGE
6. UNLESS OTHERWISE SPECIFIED TOLERANCE  $\pm 0.13$ mm.
7. ALL DIMENSIONS APPLY TO BOTH LEADED (-) AND PbfFREE (+) PKG. CODES.
8. PACKAGE CODE: L1053-H2

-DRAWING NOT TO SCALE-



TITLE: PACKAGE OUTLINE, 10 LEAD LGA, 5.00x3.20x1.49mm BODY			
APPROVAL	DOCUMENT CONTROL NO. 21-0389	REV. B	1/1