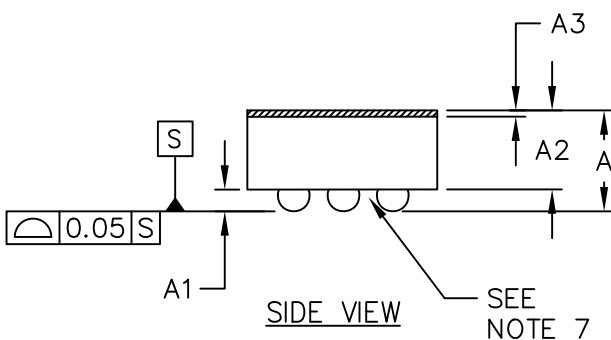


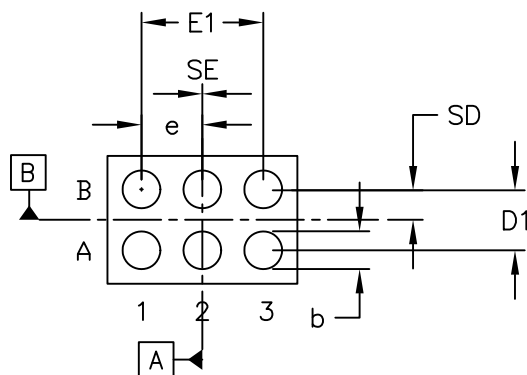
TOP VIEW



SIDE VIEW

| COMMON DIMENSIONS | |
|-------------------|-------------|
| A | 0.64±0.05 |
| A1 | 0.24±0.03 |
| A2 | 0.40 REF |
| A3 | 0.025 BASIC |
| b | ∅0.31±0.03 |
| D1 | 0.50 BASIC |
| E1 | 1.00 BASIC |
| e | 0.50 BASIC |
| SD | 0.25 BASIC |
| SE | 0.00 BASIC |

| PKG. CODE | E | | D | | DEPOPULATED BUMPS |
|-----------|------|------|------|------|-------------------|
| | MIN | MAX | MIN | MAX | |
| W61C1+1 | 1.52 | 1.62 | 1.00 | 1.10 | NONE |
| W61C1+2 | 1.52 | 1.62 | 1.00 | 1.10 | B2 |
| W61E1+1 | 1.41 | 1.51 | 0.92 | 1.02 | NONE |



BOTTOM VIEW

NOTES:

1. Terminal pitch is defined by terminal center to center value.
2. Outer dimension is defined by center lines between scribe lines.
3. All dimensions in millimeters.
4. Marking shown is for package orientation reference only.
5. Tolerance is ± 0.02mm unless specified otherwise.
6. All dimensions apply to PbFree (+) package codes only.
7. Front-side finish can be either Black or Clear.

-DRAWING NOT TO SCALE-

MAXIM

TITLE:
PACKAGE OUTLINE
6 BUMPS, WLP PKG. 0.5mm PITCH

| | | | |
|----------|---------------------------------|-----------|-----|
| APPROVAL | DOCUMENT CONTROL NO. 21-0463 | REV. C | 1/1 |
|----------|---------------------------------|-----------|-----|