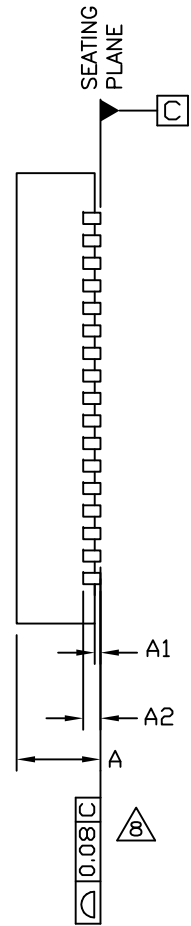
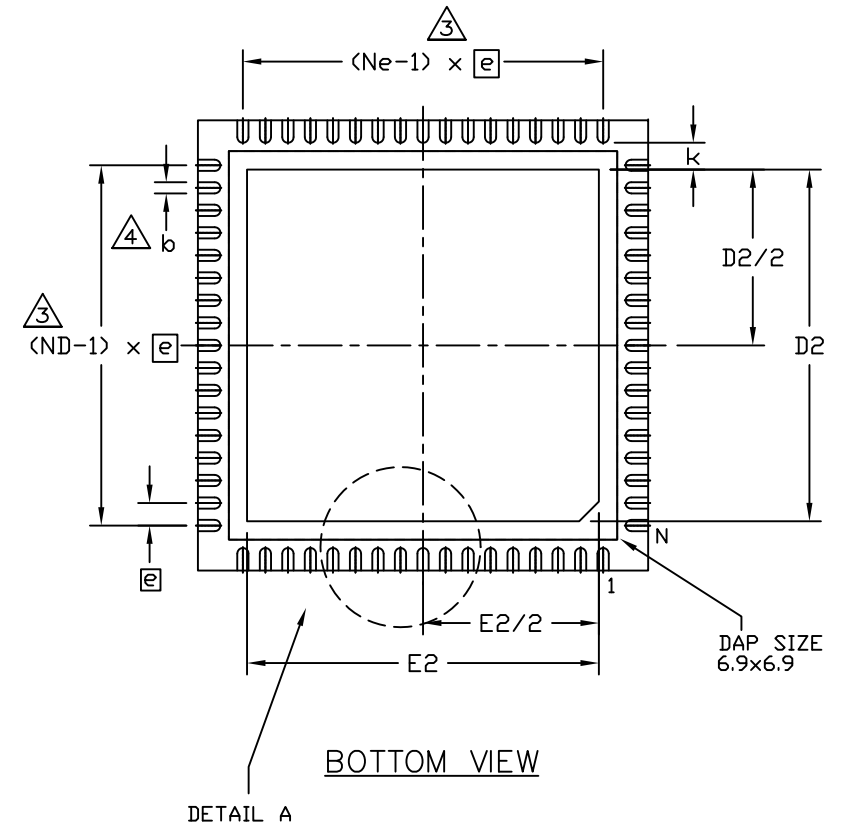


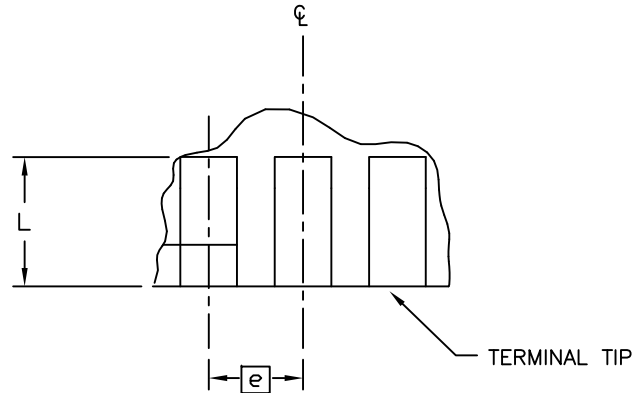
TOP VIEW



SIDE VIEW



BOTTOM VIEW



DETAIL A

-DRAWING NOT TO SCALE-

<b>MAXIM</b>		
TITLE: PACKAGE OUTLINE 68L THIN QFN, 8x8x0.75mm		
APPROVAL	DOCUMENT CONTROL NO. 21-0510	REV. A 1/2

NOTES:

1. DIE THICKNESS ALLOWABLE IS 0.225mm MAXIMUM (0.009 INCHES MAXIMUM).
2. DIMENSIONING & TOLERANCES CONFORM TO ASME Y14.5M. - 1994.
3. N IS THE NUMBER OF TERMINALS.  
Nd IS THE NUMBER OF TERMINALS IN X-DIRECTION &  
Ne IS THE NUMBER OF TERMINALS IN Y-DIRECTION.
4. DIMENSION b APPLIES TO PLATED TERMINAL AND IS MEASURED BETWEEN 0.20 AND 0.25mm FROM TERMINAL TIP.
5. THE PIN #1 IDENTIFIER MUST BE LOCATED ON THE TOP SURFACE OF THE PACKAGE WITHIN HATCHED AREA AS SHOWN. EITHER AN INDENTATION MARK OR INK/LASER MARK IS ACCEPTABLE.
6. ALL DIMENSIONS ARE IN MILLIMETERS.
7. PACKAGE WARPAGE MAX 0.10mm.
8. APPLIES TO EXPOSED PAD AND TERMINALS. EXCLUDES INTERNAL DIMENSION OF EXPOSED PAD.
9. MEETS JEDEC MO220.
10. MARKING SHOWN IS FOR PACKAGE ORIENTATION REFERENCE ONLY.
11. NUMBER OF LEADS ARE FOR REFERENCE ONLY.
12. ALL DIMENSIONS APPLY TO BOTH LEADED (-) AND PbFREE (+) PARTS.

SYMBOL	68L 8x8			NOTE
	MIN.	NOM.	MAX.	
A	0.70	0.75	0.80	
b	0.15	0.20	0.25	4
D	7.90	8.00	8.10	
E	7.90	8.00	8.10	
Ⓜ	0.40 BSC			
N	68			3
Nd	17			3
Ne	17			3
L	0.30	0.40	0.50	
A1	0.00	0.02	0.05	
A2	0.20 REF			
k	0.25	--	--	

EXPOSED PAD VARIATION							
PKG. CODE	D2			E2			JEDEC
	MIN.	NOM.	MAX.	MIN.	NOM.	MAX.	
T6888-1	6.10	6.25	6.40	6.10	6.25	6.40	WLLE-1



TITLE:  
PACKAGE OUTLINE  
68L THIN QFN, 8x8x0.75mm

APPROVAL	DOCUMENT CONTROL NO. 21-0510	REV. A	2/2
----------	---------------------------------	-----------	-----