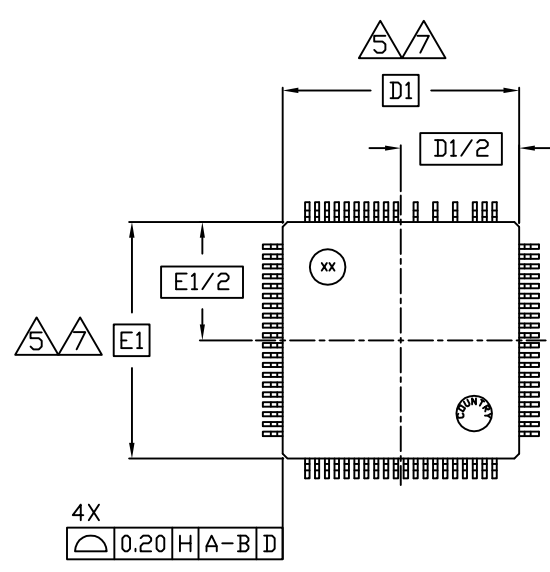
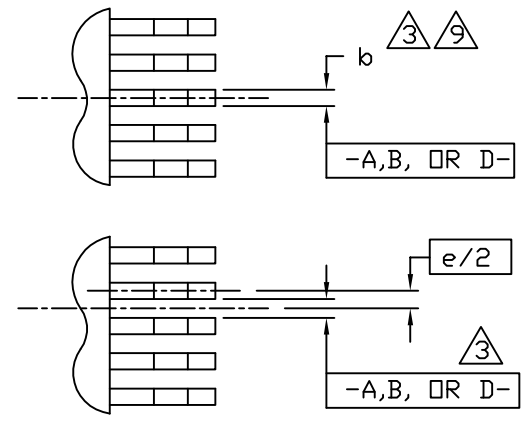


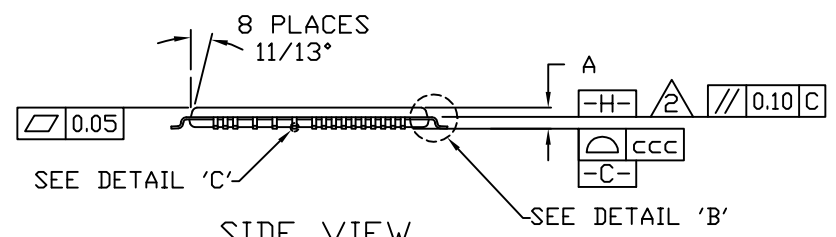
TOP VIEW



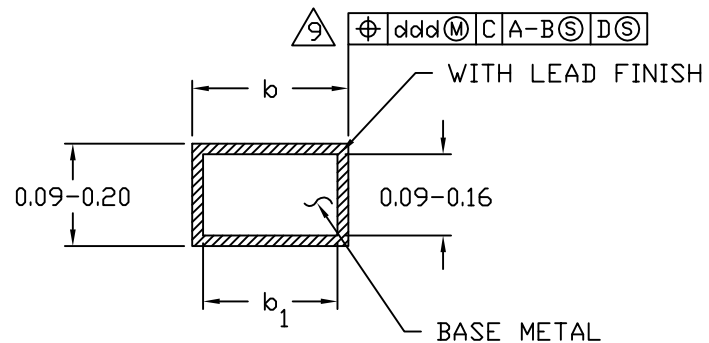
BOTTOM VIEW



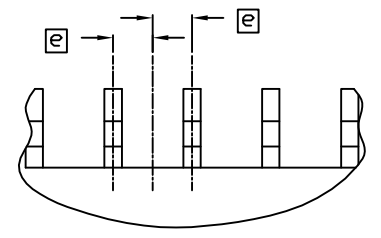
DETAIL 'A'  
EVEN / ODD LEAD SIDES



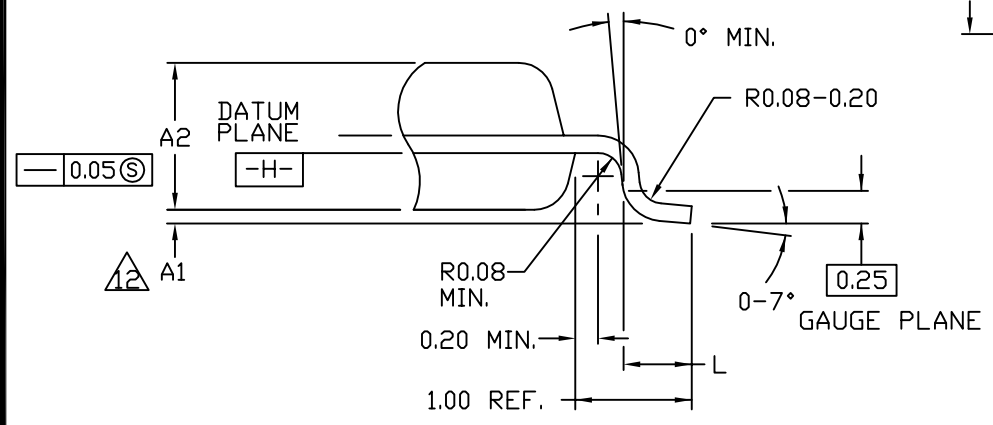
SIDE VIEW



DETAIL 'C'



DEPOPULATED LEADS  
DETAIL 'D'



DETAIL 'B'

-DRAWING NOT TO SCALE-



TITLE:  
PACKAGE OUTLINE, 76L LQFP,  
12x12x1.40mm

APPROVAL	DOCUMENT CONTROL NO. 21-0632	REV. A	1/2
----------	---------------------------------	-----------	-----

NOTES:

1. ALL DIMENSIONING AND TOLERANCES CONFIRM TO ASME Y14.5-1994.
2. DATUM PLANE [H] LOCATED AT MOLD PARTING LINE AND COINCIDENT WITH LEAD, WHERE LEAD EXITS PLASTIC BODY AT BOTTOM OF PARTING LINE.
3. DATUMS [A-B] AND [D] TO BE DETERMINED AT CENTERLINE BETWEEN LEADS WHERE LEADS EXIT PLASTIC BODY AT DATUM PLANE [H]
4. TO BE DETERMINED AT SEATING PLANE [C]
5. DIMENSIONS D1 AND E1 DO NOT INCLUDE MOLD PROTRUSION. ALLOWABLE MOLD PROTRUSION IS 0.254 MM PER SIDE.
6. "N" IS NUMBER OF TERMINALS.
7. THESE DIMENSIONS TO BE DETERMINED AT DATUM PLANE [H].
8. PACKAGE TOP DIMENSIONS ARE SMALLER THAN THE BOTTOM. THE TOP OF THE PACKAGE WILL NOT OVERHANG THE BOTTOM OF THE PACKAGE.
9. DIMENSION b DOES NOT INCLUDE DAMBAR PROTRUSION. ALLOWABLE DAMBAR PROTRUSION SHALL BE 0.08mm TOTAL IN EXCESS OF THE b DIMENSION AT MAXIMUM MATERIAL CONDITION. DAMBAR CAN NOT BE LOCATED ON THE LOWER RADIUS OR THE FOOT.
10. ALL DIMENSIONS ARE IN MILLIMETERS UNLESS OTHERWISE SPECIFIED.
11. THIS OUTLINE CONFORMS TO JEDEC PUBLICATION 95 REGISTRATION MS-026, VARIATION AND ADD.
12. A1 IS DEFINED AS THE DISTANCE FROM THE SEATING PLANE TO THE LOWEST POINT OF THE PACKAGE BODY.
13. MAXIMUM ALLOWABLE DIE THICKNESS TO BE ASSEMBLED IN THIS PACKAGE FAMILY IS 0.38mm.
14. PINS 71, 73, 75, & 77 ARE DEPOPULATED (FROM THE 80 LEADS) TO FORM A TOTAL OF 76 LEADS.
15. MATERIAL MUST COMPLY WITH BANNED AND RESTRICTED SUBSTANCES SPEC# 10-0131
16. ALL DIMENSIONS APPLY TO PbFREE (+) PKG. CODE.
17. PACKAGE CODE: C76L+1

SYMBOL	DIMENSIONS			
	MIN.	NOM.	MAX.	NOTES
A	<del>xxx</del>	<del>xxx</del>	1.60	
A1	0.05	<del>xxx</del>	0.15	12
A2	1.35	1.40	1.45	
D	14.00 BSC.			4
D1	12.00 BSC.			7,8
E	14.00 BSC.			4
E1	12.00 BSC.			7,8
L	0.45	0.60	0.75	
N	76			
e	0.50 BSC.			
b	0.17	0.22	0.27	9
b1	0.17	0.20	0.23	
ccc	<del>xxx</del>	<del>xxx</del>	0.08	
ddd	<del>xxx</del>	<del>xxx</del>	0.08	



TITLE:  
PACKAGE OUTLINE, 76L LQFP,  
12x12x1.40mm

APPROVAL	DOCUMENT CONTROL NO. 21-0632	REV. A	2/2
----------	---------------------------------	-----------	-----

-DRAWING NOT TO SCALE-