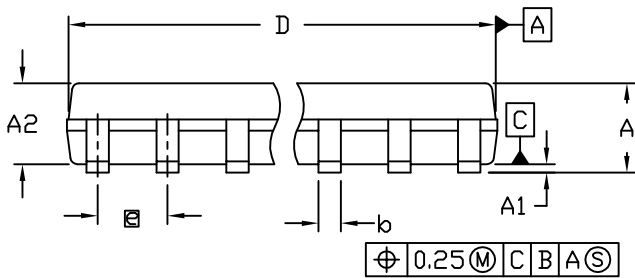


TOP VIEW

END VIEW



SIDE VIEW

SYMBOL	COMMON DIMENSIONS (MM)			COMMON DIMENSIONS (INCHES)		
	MIN.	NOM.	MAX.	MIN.	NOM.	MAX.
A	1.55	1.63	1.73	.061	.064	.068
A1	0.127	0.15	0.25	.004	.006	.0098
A2	1.40	1.47	1.55	.055	.058	.061
b	0.35	0.41	0.49	.0138	.016	.0192
c	0.19	0.20	0.25	.0075	.008	.0098
E	3.81	3.94	3.99	.150	.155	.157
e	1.27 BSC			.050 BSC		
H	5.84	5.99	6.20	.230	.236	.244
h	0.25	0.33	0.41	.010	.013	.016
L	0.41	0.64	0.89	.016	.025	.035
$\alpha$	0°	5°	8°	0°	5°	8°


SYMBOL	VARIATION A					
	MM			INCHES		
	MIN.	NOM.	MAX.	MIN.	NOM.	MAX.
D	4.80	4.93	4.98	.189	.194	.196
N	8			8		
PKG CODE:	S8-17					

SYMBOL	VARIATION B					
	MM			INCHES		
	MIN.	NOM.	MAX.	MIN.	NOM.	MAX.
D	8.58	8.69	8.74	.337	.342	.344
N	14			14		
PKG CODE:	S14-8					

NOTES:

1. ALL DIMENSIONS ARE IN MILLIMETERS UNLESS OTHERWISE SPECIFIED.
2. DIMENSIONING & TOLERANCES PER ANSI.Y14.5M - 1982
3. DIMENSIONS D AND E DO NOT INCLUDE MOLD PROTRUSIONS, BUT DOES INCLUDE MOLD MISMATCH AND ARE MEASURED AT THE MOLD PARTING LINE.
4. MOLD FLASH OR PROTRUSIONS SHALL NOT EXCEED 0.152mm (.006") AT END AND 0.25mm (.010") AT WINDOW.
5. LEADS TO BE COPLANAR WITHIN 0.076mm (.003").
6. MEETS JEDEC MS012
7. MATERIAL MUST BE COMPLIANT WITH MAXIM SPECIFICATION 10-0131 FOR SUBSTANCE CONTENT, MUST BE Eu ROHS COMPLIANT WITHOUT EXEMPTION AND PB-FREE.
8. ALL DIMENSIONS APPLY TO BOTH LEADED (-) AND PbfREE (+) PKG. CODES.

-DRAWING NOT TO SCALE-



maxim  
integrated.

---

TITLE:  
PACKAGE OUTLINE,  
8L, 14L SOIC .150"

APPROVAL	DOCUMENT CONTROL NO. 21-0702	REV. A	1/1
----------	---------------------------------	-----------	-----