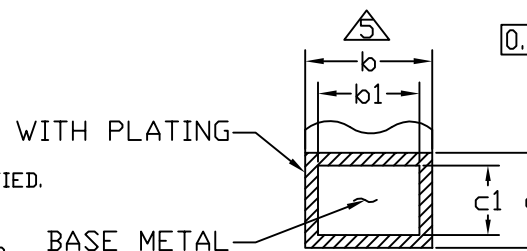
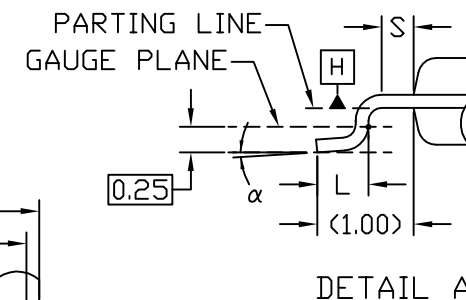
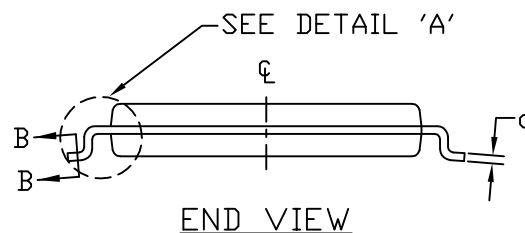
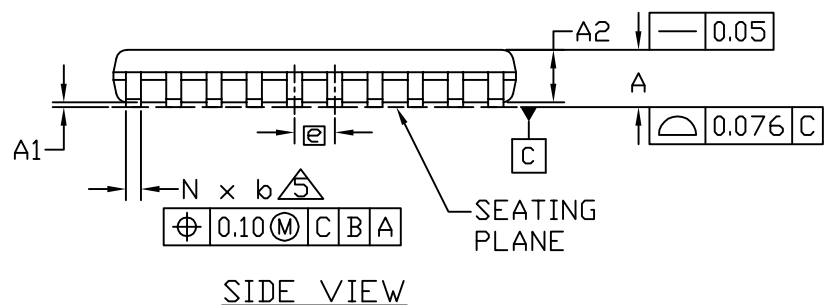


DIMENSIONS			
SYMBOL	MM		
	MIN.	NOM.	MAX.
A	-	-	1.10
A1	0.05	-	0.15
A2	0.85	0.90	0.95
b	0.19	-	0.30
b1	0.19	0.22	0.25
c	0.09	-	0.20
c1	0.09	0.127	0.16
D	6.40	6.50	6.60
E	4.30	4.40	4.50
H	6.40 BSC		
e	0.65 BSC		
L	0.50	0.60	0.70
S	0.20	-	-
α	0°	-	8°
N	20		



NOTES:

- ALL DIMENSIONS ARE IN MILLIMETERS (ANGLES IN DEGREES) UNLESS OTHERWISE SPECIFIED.
- DIMENSIONS D AND E DO NOT INCLUDE FLASH, PROTRUSIONS OR GATE BURRS.
- MOLD FLASH OR PROTRUSIONS NOT TO EXCEED 0.15mm PER SIDE
- DIMENSION 'E' DOES NOT INCLUDE INTERLEAD FLASH OR PROTRUSION SHALL NOT EXCEED 0.25 PER SIDE.
- DIMENSION 'b' DOES NOT INCLUDE DAMBAR PROTRUSION. ALLOWABLE DAMBAR PROTRUSIONS SHALL BE 0.07mm TOTAL IN EXCESS OF THE 'b' DIMENSION AT MAXIMUM MATERIAL CONDITION. DAMBAR CANNOT BE LOCATED ON THE LOWER RADIUS OF THE FOOT. MINIMUM SPACE BETWEEN PROTRUSION AND ADJACENT LEAD SHOULD BE 0.08mm.
- DATUMS A AND B TO BE DETERMINED AT DATUM PLANE B
- CROSS SECTION 'B-B' TO BE DETERMINED AT 0.10 TO 0.25MM FROM THE LEAD TIP.
- MEETS JEDEC OUTLINE MO-153.
- 'N' REFERS TO NUMBER OF LEADS.
- MARKING IS FOR PACKAGE ORIENTATION REFERENCE ONLY.
- MATERIAL MUST BE COMPLIANT WITH MAXIM SPECIFICATION 10-0131 FOR SUBSTANCE CONTENT, MUST BE Eu ROHS COMPLIANT WITHOUT EXEMPTION AND PB-FREE.
- ALL DIMENSIONS APPLY TO BOTH LEADED (-) AND PBFREE (+) PKG. CODES.
- PKG CODE: U20-6

-DRAWING NOT TO SCALE-


**maxim
integrated™**

TITLE:
PACKAGE OUTLINE, 20L TSSOP,
4.40mm BODY

APPROVAL	DOCUMENT CONTROL NO. 21-0705	REV. A	1/1
----------	---------------------------------	-----------	-----