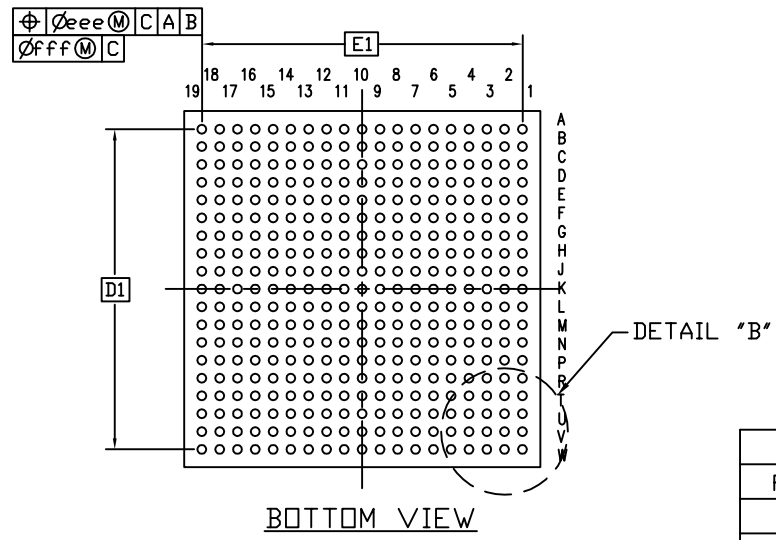
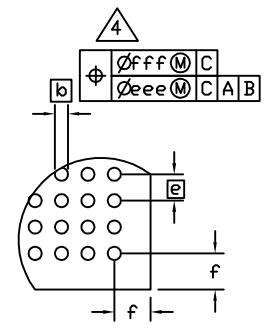


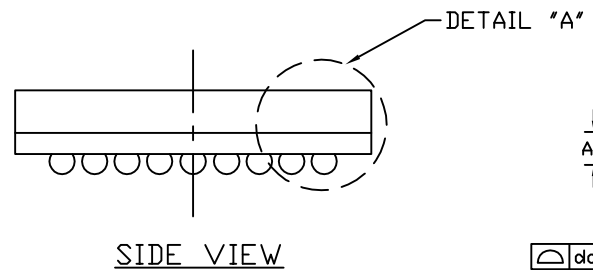
TOP VIEW



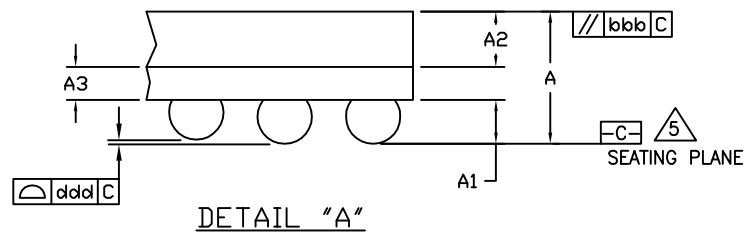
BOTTOM VIEW



DETAIL "B"



SIDE VIEW




DETAIL "A"

| DIMENSIONAL REFERENCES | | | |
|------------------------|-----------|-------|-------|
| REF. | MIN. | NOM. | MAX. |
| A | 1.30 | 1.40 | 1.50 |
| A1 | 0.35 | 0.40 | 0.45 |
| A2 | 0.65 | 0.70 | 0.75 |
| A3 | 0.32 REF | | |
| D | 15.80 | 16.00 | 16.20 |
| D1 | 14.40 BSC | | |
| E | 15.80 | 16.00 | 16.20 |
| E1 | 14.40 BSC | | |
| b | -- | 0.5 | -- |
| e | 0.8 BSC | | |
| f | -- | 0.80 | -- |
| aaa | -- | -- | 0.15 |
| bbb | -- | -- | 0.20 |
| ddd | -- | -- | 0.15 |
| eee | -- | -- | 0.15 |
| fff | -- | -- | 0.08 |
| M | 19 | | |
| N | 361 | | |
| Pkg. Code: X36166MK+1 | | | |

- NOTES:
- ALL DIMENSIONS ARE IN MILLIMETERS.
 - 'e' REPRESENTS THE BASIC SOLDER BALL PITCH.
 - 'M' REPRESENTS THE BASIC SOLDER BALL MATRIX SIZE. 'N' IS THE NUMBER OF ATTACHED SOLDER BALLS.
 - 'b' IS MEASURABLE AT THE MAXIMUM SOLDER BALL DIAMETER PARALLEL TO THE PRIMARY DATUM [C].
 - PRIMARY DATUM [C] AND THE SEATING PLANE ARE DEFINED BY THE SPHERICAL CROWNS OF THE SOLDER BALLS.
 - THE PACKAGE SURFACE SHALL BE MATTE FINISH CHARMILLES 24 TO 27.
 - THE OVERALL PACKAGE THICKNESS "A" ALREADY CONSIDERS COLLAPSED BALLS.
 - REFERENCE JEDEC MO-205.
 - MARKING SHOWN IS FOR PKG. ORIENTATION ONLY.
 - ALL DIMENSIONS APPLY TO BOTH LEADED (-) AND PbFREE (+) PKG. CODES.
 - ALL DIMENSIONS AND TOLERANCES CONFORM TO ANSI Y14.5M-1994.

-DRAWING NOT TO SCALE-


maxim integrated™

TITLE:
 PACKAGE OUTLINE,
 361 BALL CSBGA, 16x16x1.4 mm

| | | | |
|----------|---------------------------------|-----------|-----|
| APPROVAL | DOCUMENT CONTROL NO. 21-0718 | REV. A | 1/1 |
|----------|---------------------------------|-----------|-----|