



MAX17082 Evaluation Kit

General Description

The MAX17082 evaluation kit (EV kit) demonstrates the high-power, dynamically adjustable, multiphase IMVP-6.5 notebook CPU application circuit. This DC-DC converter steps down high-voltage batteries and/or AC adapters, generating a precision, low-voltage CPU core V_{CC} rail. The MAX17082 EV kit meets the Intel mobile IMVP-6.5 CPU's transient voltage specification, power-good signaling, voltage regulator thermal monitoring (VRHOT), and power-good output (PWRGD). The MAX17082 kit consists of the MAX17082 2-phase interleaved Quick-PWM™ step-down controller. The MAX17082 kit includes active voltage positioning with adjustable gain, reducing power dissipation and bulk output capacitance requirements. A slew-rate controller allows controlled transitions between VID codes, controlled soft-start and shutdown, and controlled exit suspend voltage. Precision slew-rate control provides “just-in-time” arrival at the new DAC setting, minimizing surge currents to and from the battery.

Two dedicated system inputs ($\overline{\text{PSI}}$ and DPRSLPVR) dynamically select the operating mode and number of active phases, optimizing the overall efficiency during the CPU's active and sleep states.

The MAX17082 includes latched output undervoltage-fault protection, overvoltage-fault protection, and thermal-overload protection. It also includes a voltage regulator power-good (PWRGD) output, a clock enable (CLKEN) output, a current monitor (IMON) output, and a phase-good (PHASEGD) output.

This fully assembled and tested circuit board provides a digitally adjustable 0 to 1.5000V output voltage (7-bit on-board DAC) from a 7V to 24V battery input range. Each phase delivers up to 19A output current for a total of 38A. The EV kit operates at 300kHz switching frequency (per phase) and has superior line- and load-transient response.

The MAX17082 EV kit can also be used to evaluate the MAX17021, MAX17033, and MAX17034.

Features

- ◆ Dual-Phase, Fast-Response Interleaved, Quick-PWM
- ◆ Intel IMVP-6.5 Code-Set Compliant (Calpella Socket Configuration)
- ◆ Dynamic Phase Selection Optimizes Active/Sleep Efficiency
- ◆ Transient Phase Overlap Reduces Output Capacitance
- ◆ Active Voltage Positioning with Adjustable Gain
- ◆ High Speed, Accuracy, and Efficiency
- ◆ Low-Bulk Output Capacitor Count
- ◆ 7V to 24V Input-Voltage Range
- ◆ 0 to 1.5000V Output-Voltage Range (7-Bit DAC)
- ◆ 38A Load-Current Capability (19A Each Phase)
- ◆ Accurate Current Balance and Current Limit
- ◆ 300kHz Switching Frequency (per Phase)
- ◆ Power-Good (PWRGD) and Phase-Good (PHASEGD) Outputs and Indicators
- ◆ Clock Enable ($\overline{\text{CLKEN}}$) and Thermal Fault (VRHOT) Outputs and Indicators
- ◆ Current Monitor (IMON) Output
- ◆ Output Overvoltage and Undervoltage Fault Protections
- ◆ 40-Pin Thin QFN Package with Exposed Pad
- ◆ Lead-Free and RoHS Compliant
- ◆ Fully Assembled and Tested

Ordering Information

PART	TYPE
MAX17082EVKIT+	EV Kit

+Denotes lead-free and RoHS compliant.

Component List

DESIGNATION	QTY	DESCRIPTION
CLKEN, DPRSLPVR, GND_SENSE, IMON, PGD_IN, PHASEGD, $\overline{\text{PSI}}$, PWRGD, V3P3, VOUT_SENSE, VRHOT, VR_ON	12	Test points

DESIGNATION	QTY	DESCRIPTION
C1-C4	4	10 μ F \pm 20%, 25V X5R ceramic capacitors (1210) TDK C3225X7R1E106M or AVX 12103D106M or Taiyo Yuden TMK325BJ106MM
C5	0	Not installed, ceramic capacitor (D case)

Quick-PWM is a trademark of Maxim Integrated Products, Inc.



Maxim Integrated Products 1

For pricing, delivery, and ordering information, please contact Maxim Direct at 1-888-629-4642, or visit Maxim's website at www.maxim-ic.com.

Evaluates: MAX17021/MAX17033/MAX17034/MAX17082

MAX17082 Evaluation Kit

Component List (continued)

DESIGNATION	QTY	DESCRIPTION
C6, C7, C8	3	330 μ F, 2V, 4.5m Ω low-ESR polymer capacitors (D case) Panasonic EEFSX0D331E4 or NEC TOKIN PSGV0E337M4.5
C9	0	Not installed, ceramic capacitor (0805)
C10, C11	2	1 μ F \pm 10%, 16V X5R ceramic capacitors (0603) TDK C1608X5R1C105K or Taiyo Yuden EMK107BJ683MA or Murata GRM188R61C105K
C12, C21–C27	0	Not installed, ceramic capacitors (0603) C17, C18, C21–C26 are open; C27 is short (PC trace)
C13–C16	4	0.22 μ F \pm 20%, 10V X7R ceramic capacitors (0603) Taiyo Yuden LMK107BJ224MA or TDK C1608X7R1C224M or AVX 06033D224KAT
C17, C8, C19	3	1000pF \pm 10%, 50V X7R ceramic capacitors (0603) TDK C1608X7R1H102K or Murata GRM188R71H102K or equivalent
C20	1	0.1 μ F \pm 10%, 25V X7R ceramic capacitor (0603) TDK C1608X7R1E104K Murata GRM188R71E104K
C28, C29	2	0.068 μ F \pm 10%, 16V X7R ceramic capacitors (0603) TDK C1608X7R1E683K or Taiyo Yuden EMK107BJ683KA or Murata GRM188R71C683K
C30–C39, C60–C67	18	10 μ F \pm 20%, 6.3V X5R ceramic capacitors (0805) TDK C2012X5R0J106M or Taiyo Yuden AMK212BJ106MG or AVX 08056D106MAT
C40–C59	20	22 μ F, 6.3V X5R ceramic capacitors (0805) TDK C2012X5R0J226MT Taiyo Yuden JMK212BJ226MG

DESIGNATION	QTY	DESCRIPTION
D1, D2	2	3A, 30V Schottky diodes Nihon EC31QS03L Central Semi CSMH3-40M
D3–D6	4	LEDs, green clear SMD (0805)
JU1	0	Not installed, 3-pin header
L1, L2	2	0.36 μ H, 20A, 1.2m Ω power inductors Panasonic ETQP4LR36ZFJ
N1, N2	2	n-channel MOSFET (PowerPAK SO8) Fairchild FDS6298 (8 SO) Vishay (Siliconix) SI4386DY
N3–N6	4	n-channel MOSFET (PowerPAK SO8) Fairchild FDS8670 (8 SO) Vishay (Siliconix) SI4336DY
N7	0	Not installed, n-channel MOSFET (D-PAK)
R1, R15, R16	3	10 Ω \pm 5% resistors (0603)
R2	1	59k Ω \pm 1% resistor (0603)
R3	1	12.1k Ω \pm 1% resistor (0603)
R4	1	200k Ω \pm 1% resistor (0603)
R5, R6	2	0 Ω resistors (0603)
R7, R11	2	1.21k Ω \pm 1% resistors (0603)
R8, R12	2	1.50k Ω \pm 1% resistors (0603)
R9, R13	2	20k Ω \pm 1% resistors (0603)
R10, R14	2	10k Ω \pm 1% NTC thermistors, β = 3380 (0603) Murata NCP18XH103F03RB TDK NTCG163JH103F
R17	1	2.74k Ω \pm 1% resistor (0603)
R18, R45	0	Not installed, resistors (0603)
R19	1	51 Ω \pm 5% resistor (0603)
R20	0	Not installed, 1W resistor (2512)
R21–R24, R30	5	1k Ω \pm 5% resistors (0603)
R25	1	13k Ω \pm 1% resistor (0603)
R26	1	100k Ω \pm 5% NTC thermistor, β = 4250 (0603) Murata NCP18WF104J03RB or TDK NTCG163JF104J (0402) or Panasonic ERT-J1VR104J

MAX17082 Evaluation Kit

Component List (continued)

DESIGNATION	QTY	DESCRIPTION
R27, R28, R29, R31, R32, R36–R42	12	100k Ω \pm 5% resistors (0603)
R33	1	6.98k Ω \pm 1% resistor (0603)
R34, R35	0	Not installed, resistors—short (PC trace) (0603)
R43, R44	2	1 Ω \pm 5% resistors (0603)
R46, R47	2	2 Ω \pm 5% resistors (0603)

DESIGNATION	QTY	DESCRIPTION
SW1	1	7-position low-profile DIP switch
SW2	1	5-position low-profile DIP switch
U1	1	Dual-phase, Quick-PWM VID controller (40 TQFN-EP*) Maxim MAX17082GTL+
U2	1	CPU socket rPGA-989
—	1	PCB: MAX17082 EVALUATION KIT+

*EP = Exposed pad.

Component Suppliers

SUPPLIER	PHONE	WEBSITE
AVX Corporation	843-946-0238	www.avxcorp.com
Central Semiconductor Corp.	631-435-1110	www.centralsemi.com
Fairchild Semiconductor	888-522-5372	www.fairchildsemi.com
Murata Electronics North America, Inc.	770-436-1300	www.murata-northamerica.com
NEC TOKIN America, Inc.	408-324-1790	www.nec-tokinamerica.com
Nihon Inter Electronics Corp.	847-843-7500	www.niec.co.jp
Panasonic Corp.	800-344-2112	www.panasonic.com
Taiyo Yuden	800-348-2496	www.t-yuden.com
TDK Corp.	847-803-6100	www.component.tdk.com
Vishay	402-563-6866	www.vishay.com

Note: Indicate that you are using the MAX17082 when contacting these component suppliers.

Quick Start

Recommended Equipment

Before beginning, the following equipment is needed:

- MAX17082 EV kit
- 7V to 24V, >100W power supply, battery, or notebook AC adapter
- DC bias power supply, 5V at 1A
- Two loads capable of sinking 25A each
- Digital multimeter (DMM)
- 100MHz dual-trace oscilloscope

Procedure

The MAX17082 EV kit is fully assembled and tested. Follow the steps below to verify board operation:

- 1) Ensure that the circuit is connected correctly to the supplies and dummy load prior to applying any power.

- 2) Set SW2 (4, 7) and SW2 (5, 6) to the on positions. The DAC code settings (D6–D0) are set by switch SW1. Set SW1 (1, 14), SW1 (3, 12), SW1 (5, 10) and SW1 (7, 8) to the on positions. The output voltage is set for 0.9750V.
- 3) Turn on the battery power before turning on the +5V bias power.
- 4) Observe the 0.9750V output voltage with the DMM and/or oscilloscope. Look at the LX switching nodes and MOSFET gate-drive signals while varying the load current.

Detailed Description of Hardware

This 38A multiphase buck-regulator design is optimized for a 300kHz switching frequency (per phase) and output-voltage settings around 1V. At $V_{OUT} = 1V$ and $V_{IN} = 12V$, the inductor ripple is approximately 45% (LIR = 0.45). The MAX17082 controller interleaves all the active phases, resulting in out-of-phase operation that minimizes the input and output filtering requirements.

MAX17082 Evaluation Kit

The multiphase controller shares the current between two phases that operate 180° out-of-phase, supplying up to 19A per phase.

Setting the Output Voltage

The MAX17082 has an internal digital-to-analog converter (DAC) that programs the output voltage. The output voltage can be digitally set from 0 to 1.5000V (Table 2) from the D0–D6 pins. There are two different ways of setting the output voltage:

- 1) **Drive the external VID0–VID6 inputs (all SW1 positions are off).** The output voltage is set by dri-

ving VID0–VID6 with open-drain drivers (pullup resistors are included on the board) or 3V/5V CMOS output logic levels.

- 2) **Switch SW1.** When SW1 positions are off, the MAX17082's D0–D6 inputs are at logic 1 (connected to VDD). When SW1 positions are on, D0–D6 inputs are at logic 0 (connected to GND). The output voltage can be changed during operation by activating SW1 on and off. As shipped, the EV kit is configured with SW1 positions set for 0.9750V output (Table 2). Refer to the MAX17082 IC data sheet for more information.

Table 1. MAX17082 Operating Mode Truth Table

INPUTS				PHASE OPERATION*	OPERATING MODE
SHDN SW2 (1, 10)	SLOW SW2 (5, 6)	DPRSLPVR SW2 (2, 9)	PSI SW2 (3, 8)		
GND	X	X	X	Disabled	Low-Power Shutdown Mode. DL1 and DL2 are forced low and the controller is disabled. The supply current drops to 1A (max).
Rising	X	X	X	Multiphase Pulse Skipping 1/8 R _{TIME} Slew Rate	Startup/Boot. When SHDN is pulled high, the MAX17082 begins the startup sequence. Once the REF is above 1.84V, the controller enables the PWM controller and ramps the output voltage up to the boot voltage.
High	High	Low	High	Multiphase Forced-PWM Normal R _{TIME} Slew Rate	Full Power. The no-load output voltage is determined by the selected VID DAC code (D0–D6, Table 2).
High	High	Low	Low	1-Phase Forced-PWM Normal R _{TIME}	Intermediate Power. The no-load output voltage is determined by the selected VID DAC code (D0–D6, Table 2). When PSI is pulled low, the MAX17082 immediately disables phase 2. DH2 and DL2 are pulled low.
High	High	High	X	1-Phase Pulse Skipping Normal R _{TIME} Slew Rate	Deeper Sleep Mode. The no-load output voltage is determined by the selected VID DAC code (D0–D6, Table 2). When DPRSLPVR is pulled high, the MAX17082 immediately enters 1-phase pulse-skipping operation allowing automatic PWM/PFM switchover under light loads. The PWRGD and CLKEN upper thresholds are blanked during downward transitions. DH2 and DL2 are pulled low.
High	Low	X	X	1/2 R _{TIME} Slew Rate	When SLOW is pulled low during any normal operating mode, the slew rate is changed to half the normal value set by R _{TIME} .
Falling	X	X	X	Multiphase Forced-PWM 1/8 R _{TIME} Slew Rate	Shutdown. When SHDN is pulled low, the MAX17082 immediately pulls PWRGD and PHASEGD low, CLKEN becomes high impedance, all enabled phases are activated, and the output voltage is ramped down to ground. Once the output reaches 0V, the controller enters the low-power shutdown state.
High	X	X	X	Disabled	Fault Mode. The fault latch has been set by the MAX17082 UVP or thermal-shutdown protection, or by the OVP protection. The controller remains in FAULT mode until V _{CC} power is cycled or SHDN toggled.

*Multiphase operation = All enabled phases active.
X = Don't care.

MAX17082 Evaluation Kit

Table 2. MAX17082 IMVP-6.5 Output-Voltage VID DAC Codes

D6	D5	D4	D3	D2	D1	D0	OUTPUT VOLTAGE (V)	D6	D5	D4	D3	D2	D1	D0	OUTPUT VOLTAGE (V)
0	0	0	0	0	0	0	1.5000	1	0	0	0	0	0	0	0.7000
0	0	0	0	0	0	1	1.4875	1	0	0	0	0	0	1	0.6875
0	0	0	0	0	1	0	1.4750	1	0	0	0	0	1	0	0.6750
0	0	0	0	0	1	1	1.4625	1	0	0	0	0	1	1	0.6625
0	0	0	0	1	0	0	1.4500	1	0	0	0	1	0	0	0.6500
0	0	0	0	1	0	1	1.4375	1	0	0	0	1	0	1	0.6375
0	0	0	0	1	1	0	1.4250	1	0	0	0	1	1	0	0.6250
0	0	0	0	1	1	1	1.4125	1	0	0	0	1	1	1	0.6125
0	0	0	1	0	0	0	1.4000	1	0	0	1	0	0	0	0.6000
0	0	0	1	0	0	1	1.3875	1	0	0	1	0	0	1	0.5875
0	0	0	1	0	1	0	1.3750	1	0	0	1	0	1	0	0.5750
0	0	0	1	0	1	1	1.3625	1	0	0	1	0	1	1	0.5625
0	0	0	1	1	0	0	1.3500	1	0	0	1	1	0	0	0.5500
0	0	0	1	1	0	1	1.3375	1	0	0	1	1	0	1	0.5375
0	0	0	1	1	1	0	1.3250	1	0	0	1	1	1	0	0.5250
0	0	0	1	1	1	1	1.3125	1	0	0	1	1	1	1	0.5125
0	0	1	0	0	0	0	1.3000	1	0	1	0	0	0	0	0.5000
0	0	1	0	0	0	1	1.2875	1	0	1	0	0	0	1	0.4875
0	0	1	0	0	1	0	1.2750	1	0	1	0	0	1	0	0.4750
0	0	1	0	0	1	1	1.2625	1	0	1	0	0	1	1	0.4625
0	0	1	0	1	0	0	1.2500	1	0	1	0	1	0	0	0.4500
0	0	1	0	1	0	1	1.2375	1	0	1	0	1	0	1	0.4375
0	0	1	0	1	1	0	1.2250	1	0	1	0	1	1	0	0.4250
0	0	1	0	1	1	1	1.2125	1	0	1	0	1	1	1	0.4125
0	0	1	1	0	0	0	1.2000	1	0	1	1	0	0	0	0.4000
0	0	1	1	0	0	1	1.1875	1	0	1	1	0	0	1	0.3875
0	0	1	1	0	1	0	1.1750	1	0	1	1	0	1	0	0.3750
0	0	1	1	0	1	1	1.1625	1	0	1	1	0	1	1	0.3625
0	0	1	1	1	0	0	1.1500	1	0	1	1	1	0	0	0.3500
0	0	1	1	1	0	1	1.1375	1	0	1	1	1	0	1	0.3375
0	0	1	1	1	1	0	1.1250	1	0	1	1	1	1	0	0.3250
0	0	1	1	1	1	1	1.1125	1	0	1	1	1	1	1	0.3125
0	1	0	0	0	0	0	1.1000	1	1	0	0	0	0	0	0.3000
0	1	0	0	0	0	1	1.0875	1	1	0	0	0	0	1	0.2875
0	1	0	0	0	1	0	1.0750	1	1	0	0	0	1	0	0.2750
0	1	0	0	0	1	1	1.0625	1	1	0	0	0	1	1	0.2625
0	1	0	0	1	0	0	1.0500	1	1	0	0	1	0	0	0.2500
0	1	0	0	1	0	1	1.0375	1	1	0	0	1	0	1	0.2375
0	1	0	0	1	1	0	1.0250	1	1	0	0	1	1	0	0.2250
0	1	0	0	1	1	1	1.0125	1	1	0	0	1	1	1	0.2125

Evaluates: MAX17021/MAX17033/MAX17034/MAX17082

MAX17082 Evaluation Kit

Table 2. MAX17082 IMVP-6.5 Output-Voltage VID DAC Codes (continued)

D6	D5	D4	D3	D2	D1	D0	OUTPUT VOLTAGE (V)		D6	D5	D4	D3	D2	D1	D0	OUTPUT VOLTAGE (V)
0	1	0	1	0	0	0	1.0000		1	1	0	1	0	0	0	0.2000
0	1	0	1	0	0	1	0.9875		1	1	0	1	0	0	1	0.1875
0	1	0	1	0	1	0	0.9750		1	1	0	1	0	1	0	0.1750
0	1	0	1	0	1	1	0.9625		1	1	0	1	0	1	1	0.1625
0	1	0	1	1	0	0	0.9500		1	1	0	1	1	0	0	0.1500
0	1	0	1	1	0	1	0.9375		1	1	0	1	1	0	1	0.1375
0	1	0	1	1	1	0	0.9250		1	1	0	1	1	1	0	0.1250
0	1	0	1	1	1	1	0.9125		1	1	0	1	1	1	1	0.1125
0	1	1	0	0	0	0	0.9000		1	1	1	0	0	0	0	0.1000
0	1	1	0	0	0	1	0.8875		1	1	1	0	0	0	1	0.0875
0	1	1	0	0	1	0	0.8750		1	1	1	0	0	1	0	0.0750
0	1	1	0	0	1	1	0.8625		1	1	1	0	0	1	1	0.0625
0	1	1	0	1	0	0	0.8500		1	1	1	0	1	0	0	0.0500
0	1	1	0	1	0	1	0.8375		1	1	1	0	1	0	1	0.0375
0	1	1	0	1	1	0	0.8250		1	1	1	0	1	1	0	0.0250
0	1	1	0	1	1	1	0.8125		1	1	1	0	1	1	1	0.0125
0	1	1	1	0	0	0	0.8000		1	1	1	1	0	0	0	0
0	1	1	1	0	0	1	0.7875		1	1	1	1	0	0	1	0
0	1	1	1	0	1	0	0.7750		1	1	1	1	0	1	0	0
0	1	1	1	0	1	1	0.7625		1	1	1	1	0	1	1	0
0	1	1	1	1	0	0	0.7500		1	1	1	1	1	0	0	0
0	1	1	1	1	0	1	0.7375		1	1	1	1	1	0	1	0
0	1	1	1	1	1	0	0.7250		1	1	1	1	1	1	0	0
0	1	1	1	1	1	1	0.7125		1	1	1	1	1	1	1	Off

Reduced Power-Dissipation Voltage Positioning

The MAX17082 includes a transconductance amplifier for adding gain to the voltage-positioning sense path. The amplifier's input is generated by summing the current-sense inputs, which differentially sense the voltage across the inductor's DCR. The transconductance amplifier's output connects to the voltage-positioned feedback input (FBAC), so the resistance between FBAC and V_{OUT} (R17) determines the voltage positioning gain. Resistor R17 (2.74k Ω) provides a -1.9mV/A voltage-positioning slope at the output when all phases are active. Remote output and ground sensing eliminate any additional PCB voltage drops.

Dynamic Output-Voltage Transition Experiment

This MAX17082 EV kit is set to transition the output voltage at 6.25mV/ μ s (SLOW = GND). The speed of the transition is altered by scaling resistors R2 and R3.

During the voltage transition, watch the inductor current by looking at the current-sense inputs with a differential scope probe. Observe the low, well-controlled inductor current that accompanies the voltage transition. Slew-rate control during shutdown and startup results in well-controlled currents in to and out of the battery (input source).

There are two methods to create an output-voltage transition. Select D0–D6 (SW1). Then either manually change the SW1 settings to a new VID code setting (Table 2), or disable all SW1 settings and drive the VID0–VID6 PCB test points externally to the desired code settings.

MAX17082 Evaluation Kit

Evaluates: MAX17021/MAX17033/MAX17034/MAX17082

Load-Transient Experiment

One interesting experiment is to subject the output to large, fast load transients and observe the output with an oscilloscope. Accurate measurement of output ripple and load-transient response invariably requires that ground clip leads be completely avoided and the probe removed to expose the GND shield, so the probe can be directly grounded with as short a wire as possible to the board. Otherwise, EMI and noise pickup corrupt the waveforms.

Most benchtop electronic loads intended for power-supply testing lack the ability to subject the DC-DC converter to ultra-fast load transients. Emulating the supply current (di/dt) at the IMVP-6.5 V_{CORE} pins requires at least 500A/ μ s load transients. An easy method for generating such an abusive load transient is to install a power MOSFET at the N7 location and install resistor R20 between 5m Ω and 10m Ω to monitor the transient current. Then drive its gate (TP1) with a strong pulse generator at a low-duty cycle (<5%) to minimize heat stress in the MOSFET. Vary the high-level output voltage of the pulse generator to vary the load current.

To determine the load current, you might expect to insert a meter in the load path, but this method is prohibited here by the need for low resistance and induc-

tance in the path of the dummy-load MOSFET. To determine how much load current a particular pulse-generator amplitude is causing, observe the current through inductor L1. In the buck topology, the load current is approximately equal to the average value of the inductor current.

Note: CPU socket is based on the CALPELLA platform pin configuration.

Switch SW2 Settings

Shutdown SW2 (1, 10)

When $\overline{\text{SHDN}}$ goes low (SW2 (1, 10) = on), the MAX17082 enters low-power shutdown mode. PWRGD is pulled low immediately and the output voltage ramps down at 1/8 the slew rate set by R2 and R3 (71.1k Ω). When the controller reaches the 0V target, the drivers are disabled (DL1 and DL2 driven high), the reference is turned off, and the IC supply currents drop to 1 μ A (max).

When a fault condition activates the shutdown sequence (output undervoltage lockout or thermal shutdown), the protection circuitry sets the fault latch to prevent the controller from restarting. To clear the fault latch and reactivate the MAX17082, toggle $\overline{\text{SHDN}}$ or cycle V_{DD} power.

Table 3. Shutdown Mode ($\overline{\text{SHDN}}$)

SW2 (1, 10)	$\overline{\text{SHDN}}$ PIN	MAX17082 OUTPUT
Off*	Connected to VDD	Output enabled—V _{OUT} is selected by VID DAC code (D0–D6) settings
On	Connected to GND	Shutdown mode, V _{OUT} = 0V

*Default position.

Table 4. DPRSLPVR, $\overline{\text{PSI}}$

DPRSLPVR SW2 (2, 9)	$\overline{\text{PSI}}$ SW2 (3, 8)	POWER LEVEL	OPERATING MODE
On (VDD)	X	Low current	1-phase pulse-skipping mode
Off (GND)	On (GND)	Intermediate	1-phase forced-PWM mode
Off (GND)*	Off (VDD)*	Full	Normal operation—all phases are active, forced-PWM mode

*Default position.

X = Don't care.

Table 5. $\overline{\text{SLOW}}$

SW2 (5, 6)	$\overline{\text{SLOW}}$ PIN	MAX17082
Off	Connected to VDD	Nominal slew rate is set by R2 and R3
On*	Connected to GND	Slew rate is reduced to half the nominal slew rate

*Default position.

MAX17082 Evaluation Kit

DPRSLPVR SW2 (2, 9), $\overline{\text{PSI}}$ SW2 (3, 8)

DPRSLPVR and $\overline{\text{PSI}}$ together determine the operating mode, as shown in Table 4. The MAX17082 will be forced into full-phase PWM mode during startup, while in boot mode, during the transition from boot mode to VID mode, and during shutdown.

$\overline{\text{SLOW}}$, SW2 (5, 6)

This 1V logic input signal selects between the nominal and “slow” (half of nominal rate) slew rates. When $\overline{\text{SLOW}}$ is forced high, the selected nominal slew rate is set by the TIME resistance. When $\overline{\text{SLOW}}$ is forced low, the slew rate is reduced to half the nominal slew rate.

PGDIN, SW2 (4, 7)

PGDIN indicates the power status of other system rails and is used for power-supply sequencing. After power-up to the boot voltage, the output voltage remains at V_{BOOT} , $\overline{\text{CLKEN}}$ remains high, and PWRGD remains low as long as the PGDIN stays low. When PGDIN is pulled high, the output transitions to selected VID voltage, and $\overline{\text{CLKEN}}$ is pulled low. If the system pulls PGDIN low during normal operation, the MAX17082 immediately drives $\overline{\text{CLKEN}}$ high, pulls PWRGD low, and slews the output to the boot voltage (using 2-phase pulse-skipping mode). The controller remains at the boot voltage until PGDIN goes high again, $\overline{\text{SHDN}}$ is toggled, or the VDD is cycled.

Table 6. PGDIN

SW2 (4, 7)	PGDIN PIN	MAX17082 OUTPUT
Off	Connected to GND	VOUT remains at the boot voltage. $\overline{\text{CLKEN}}$ remains high, and PWRGD remains low.
On*	Connected to VDD	VOUT transitions to selected VID voltage, and $\overline{\text{CLKEN}}$ is pulled low.

*Default position.

MAX17082 Evaluation Kit

Evaluates: MAX17021/MAX17033/MAX17034/MAX17082

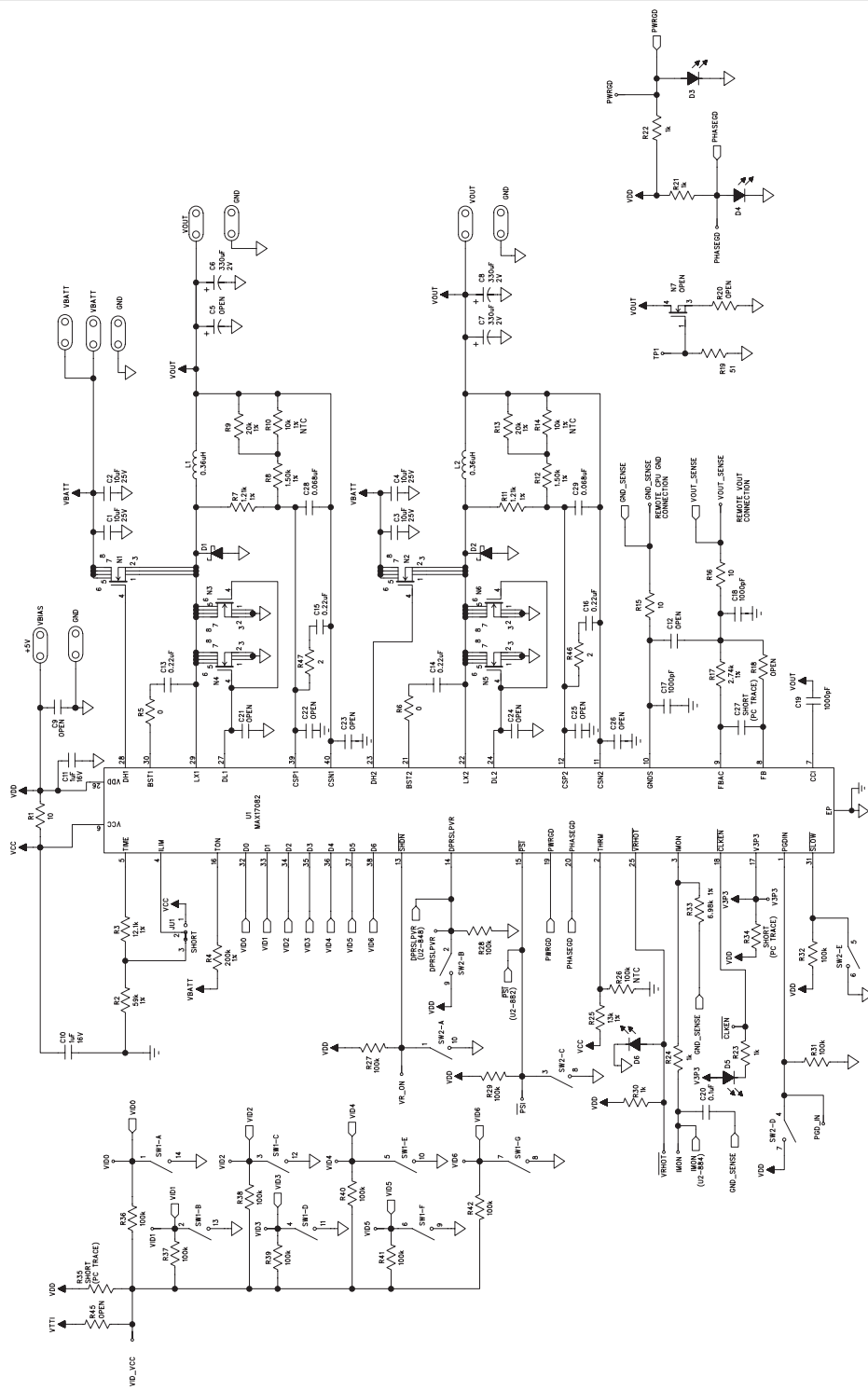


Figure 1a. MAX17082 EV Kit Schematic (Sheet 1 of 2)

MAX17082 Evaluation Kit

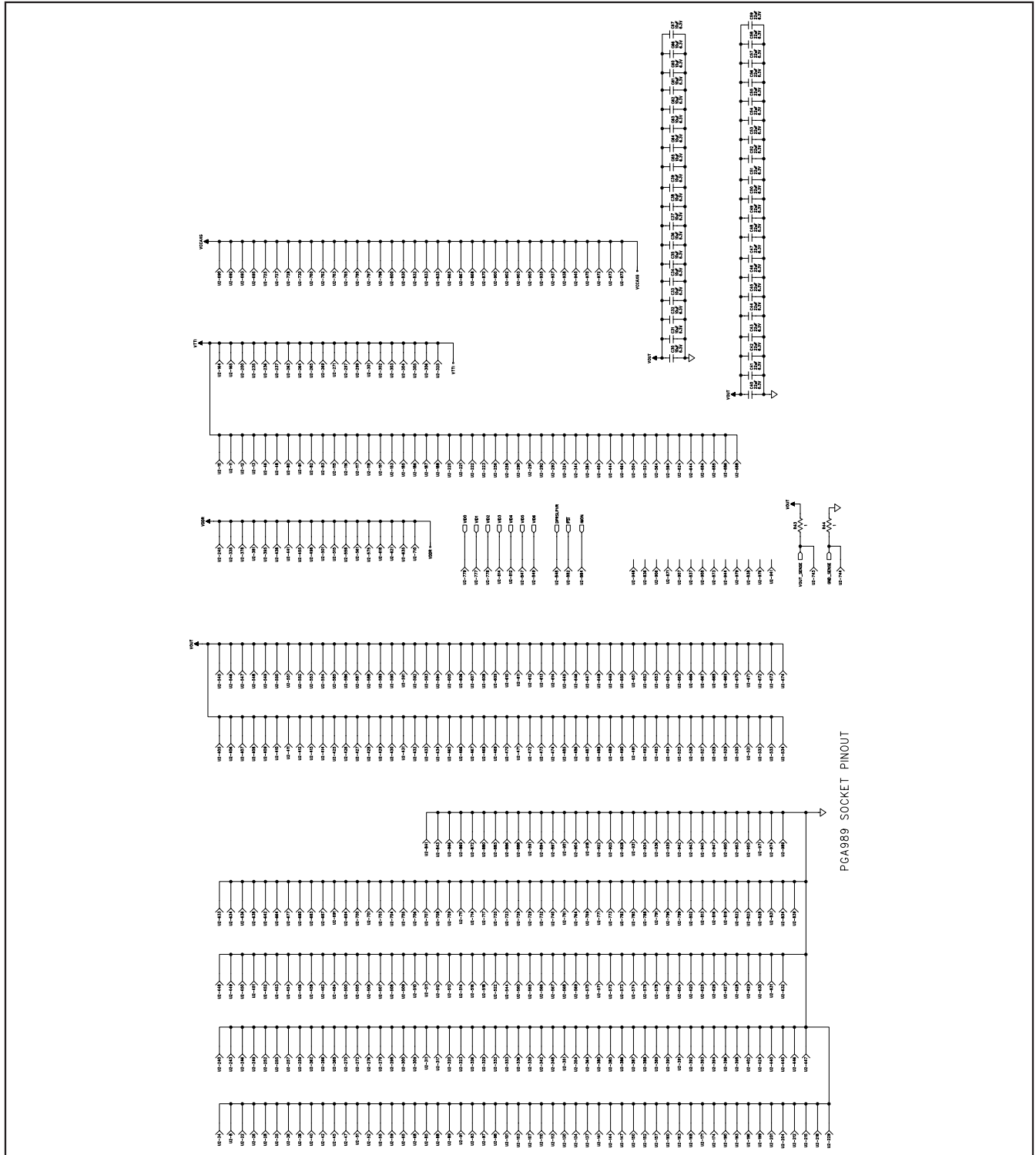


Figure 1b. MAX17082 EV Kit Schematic (Sheet 2 of 2)

MAX17082 Evaluation Kit

Evaluates: MAX17021/MAX17033/MAX17034/MAX17082

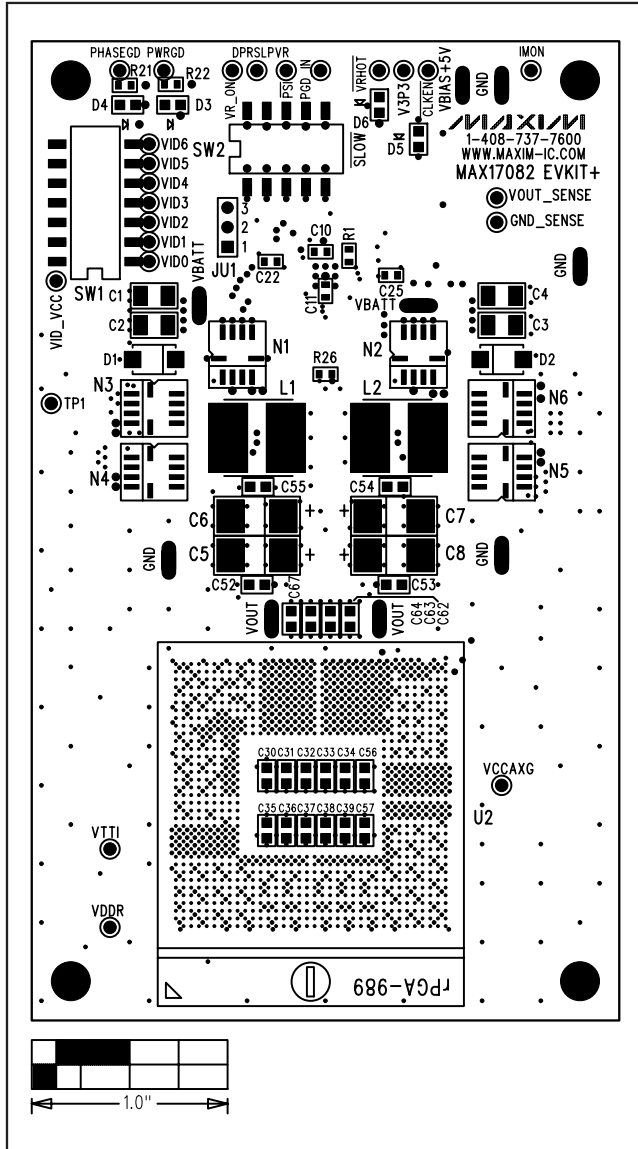


Figure 2. MAX17082 EV Kit Component Placement Guide—Component Side

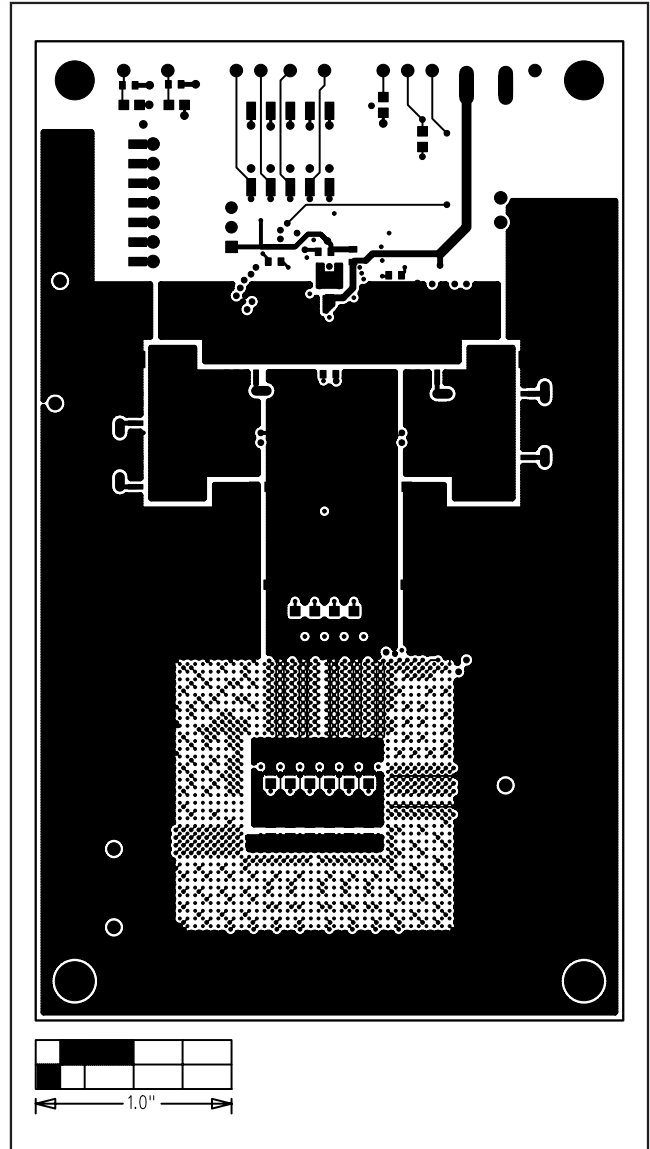


Figure 3. MAX17082 EV Kit PCB Layout—Component Side

MAX17082 Evaluation Kit

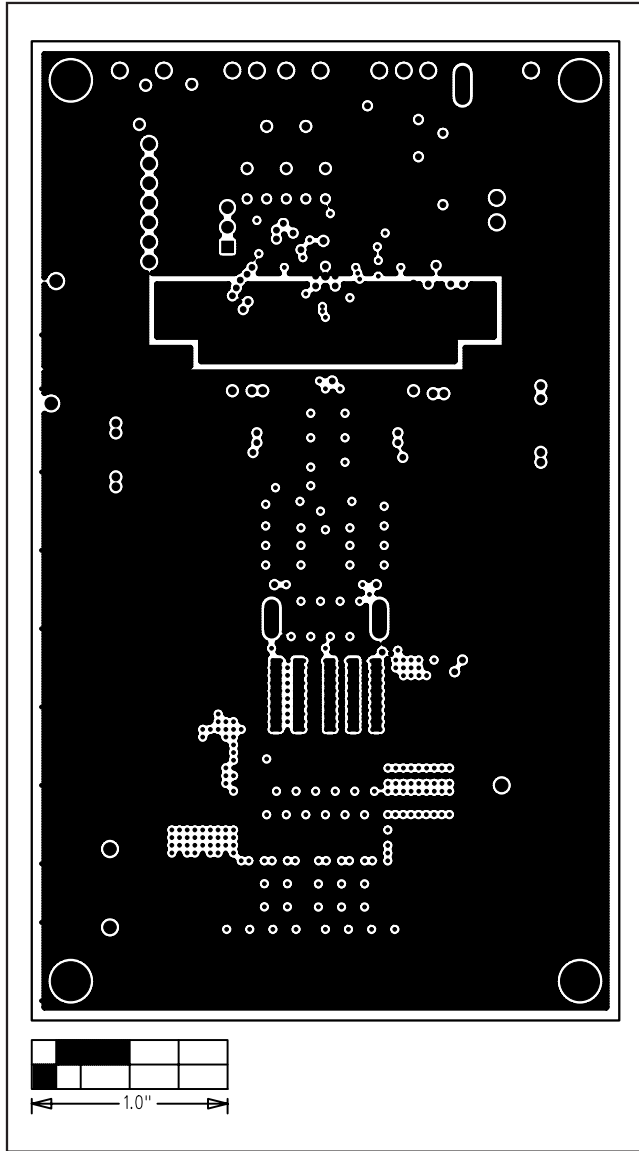


Figure 4. MAX17082 EV Kit PCB Layout—Internal Layer 2 (VBATT/PGND Plane)

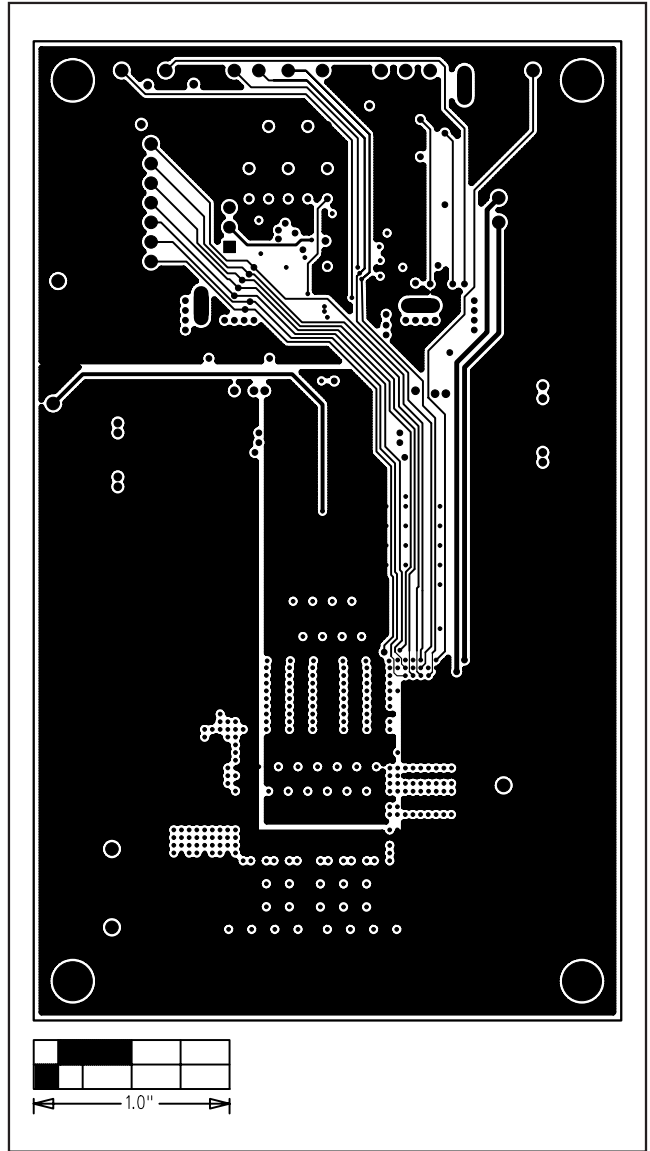


Figure 5. MAX17082 EV Kit PCB Layout—Internal Layer 3 (Signal Layer)

MAX17082 Evaluation Kit

Evaluates: MAX17021/MAX17033/MAX17034/MAX17082

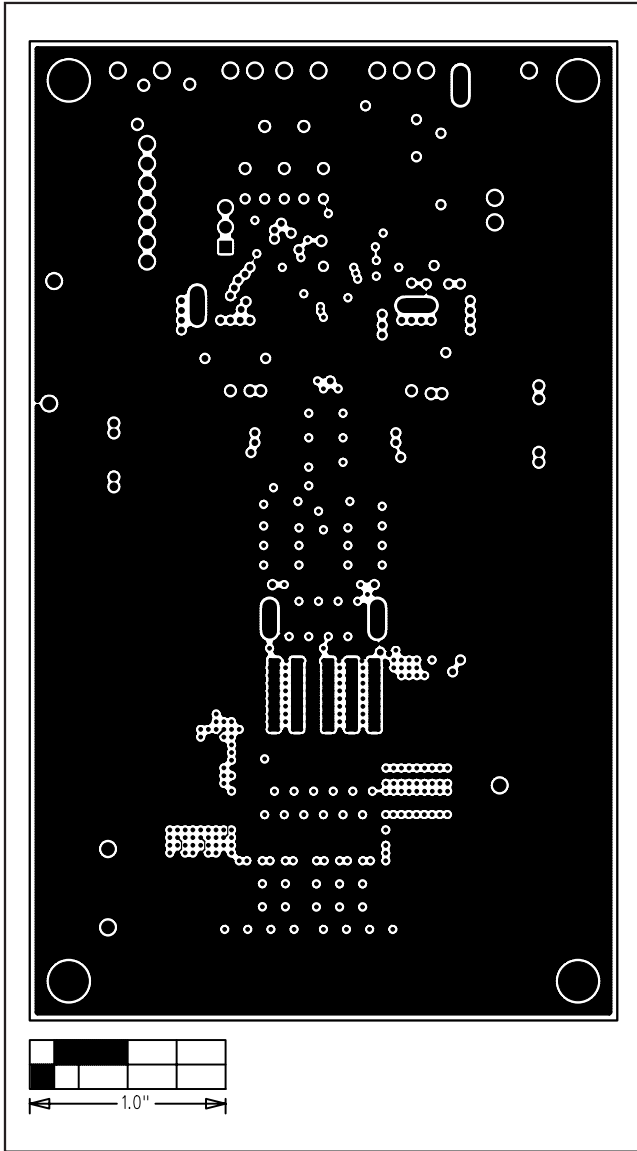


Figure 6. MAX17082 EV Kit PCB Layout—Internal Layer 4 (PGND Layer)

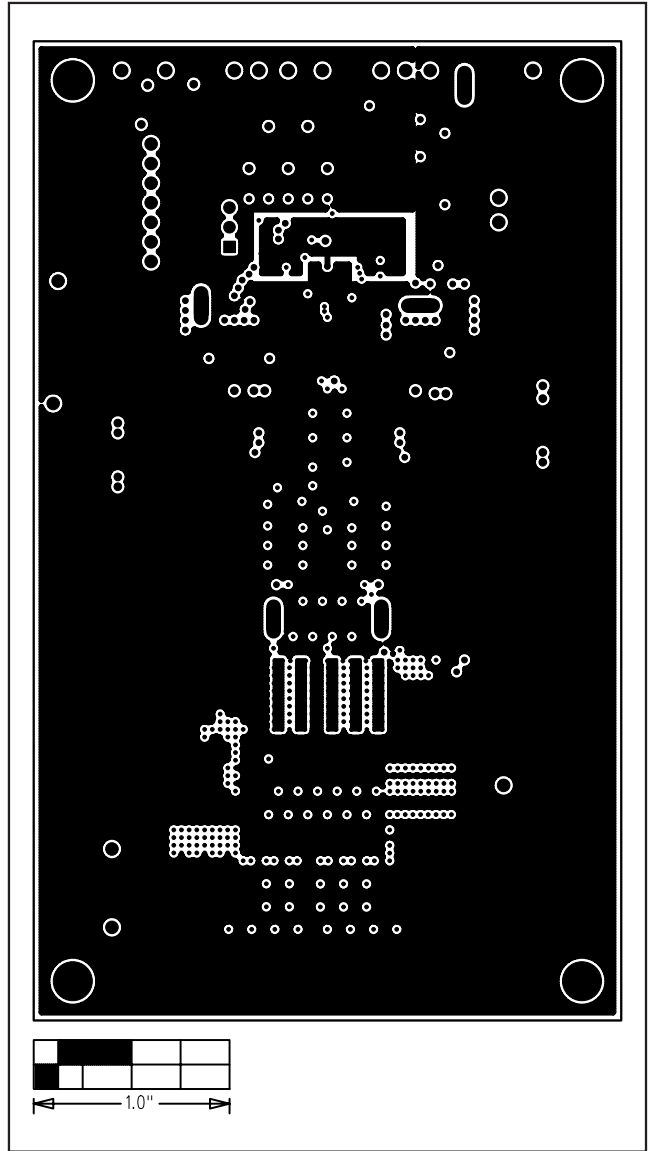


Figure 7. MAX17082 EV Kit PCB Layout—Internal Layer 5 (AGND/PGND Layer)

MAX17082 Evaluation Kit

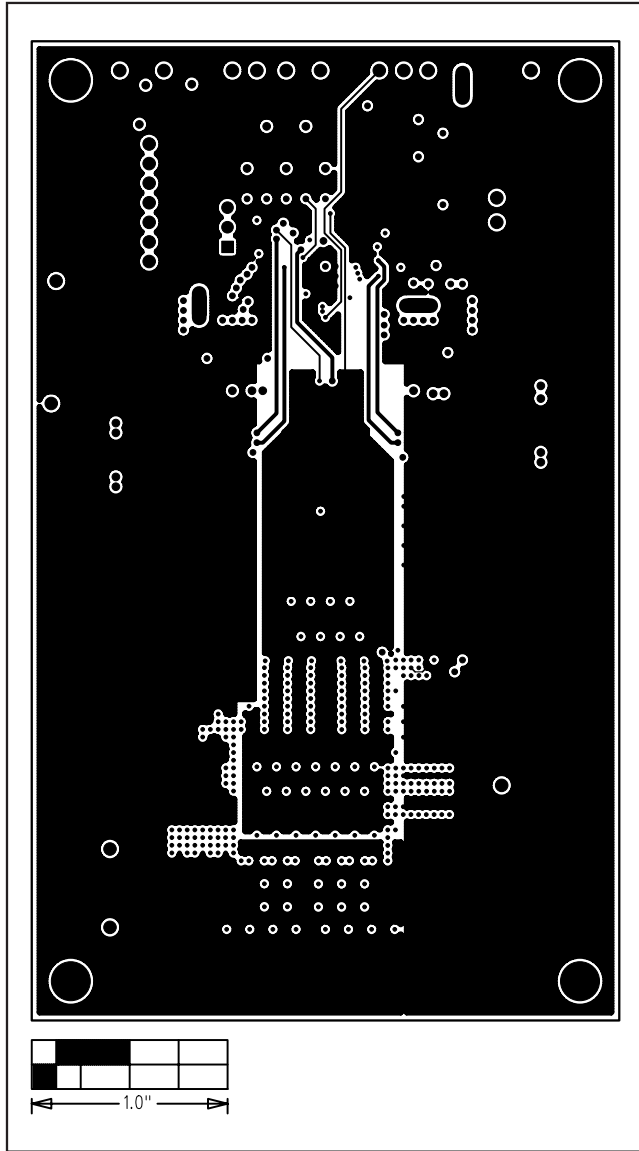


Figure 8. MAX17082 EV Kit PCB Layout —Internal Layer 6 (Signal Layer)

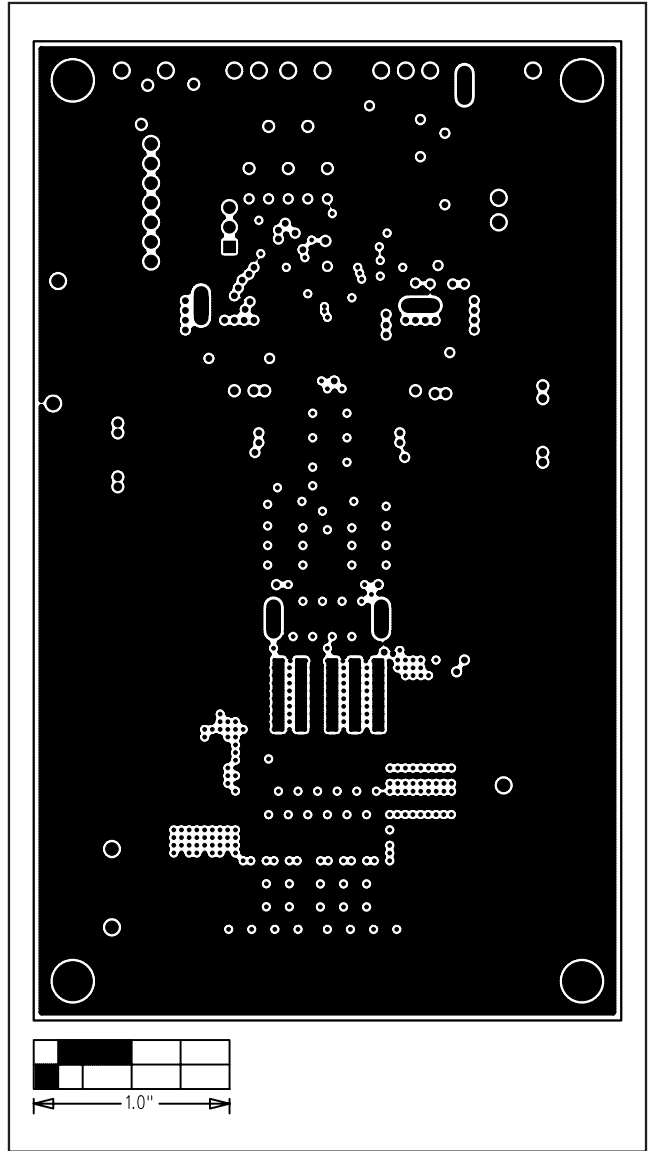


Figure 9. MAX17082 EV Kit PCB Layout —Internal Layer 7 (PGND Layer)

MAX17082 Evaluation Kit

Evaluates: MAX17021/MAX17033/MAX17034/MAX17082

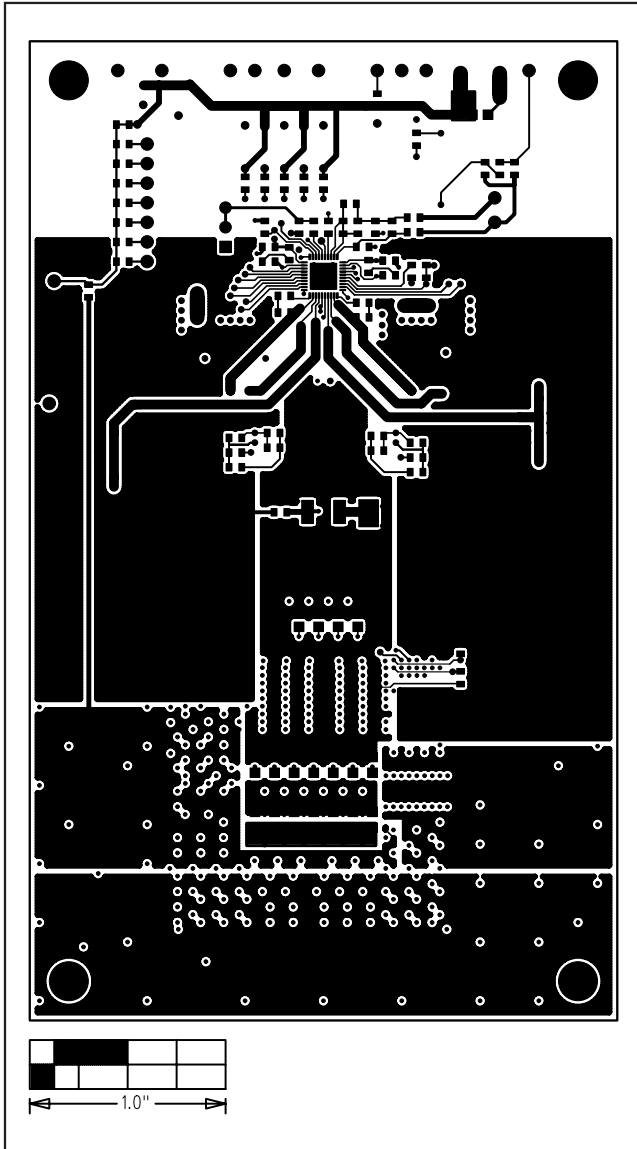


Figure 10. MAX17082 EV Kit PCB Layout—Solder Side

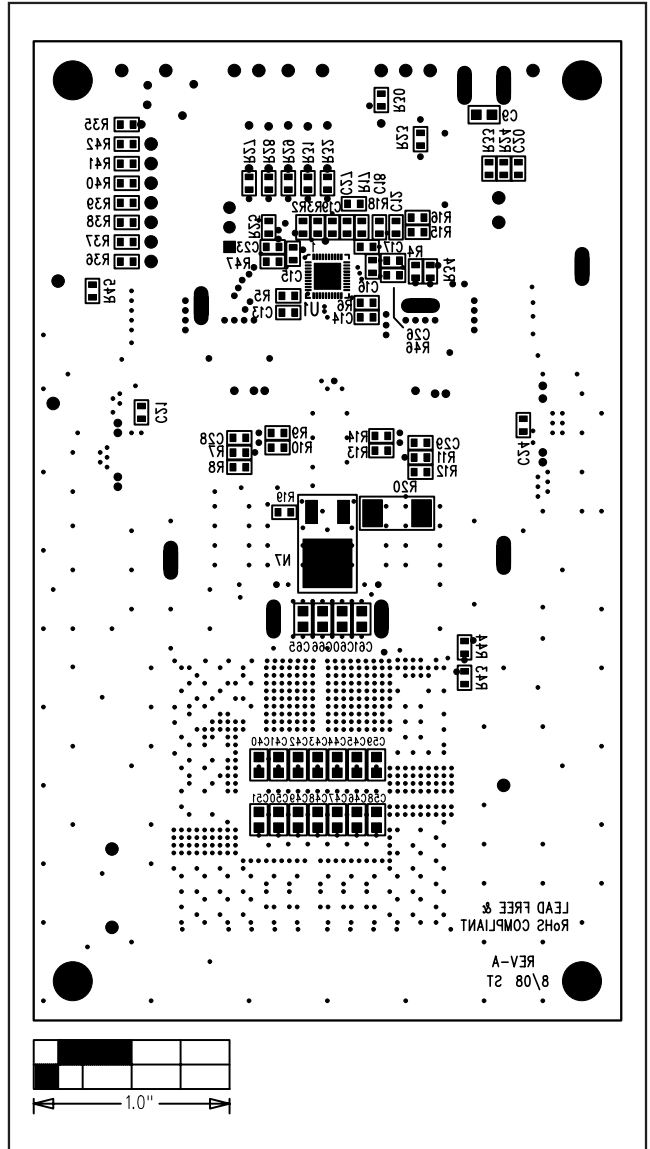


Figure 11. MAX17082 EV Kit Component Placement Guide—Solder Side

MAX17082 Evaluation Kit

Revision History

REVISION NUMBER	REVISION DATE	DESCRIPTION	PAGES CHANGED
0	10/08	Initial release	—
1	4/09	Updated components C12, C17, C18, and R15 to improve load line accuracy	2, 9

Maxim cannot assume responsibility for use of any circuitry other than circuitry entirely embodied in a Maxim product. No circuit patent licenses are implied. Maxim reserves the right to change the circuitry and specifications without notice at any time.

16 **Maxim Integrated Products, 120 San Gabriel Drive, Sunnyvale, CA 94086 408-737-7600**