

General Description

The MAX7034 evaluation kit (EV kit) allows for a detailed evaluation of the MAX7034 superheterodyne receiver. It enables testing of the device's RF performance and requires no additional support circuitry. The RF input uses a 50Ω matching network and an SMA connector for convenient connection to test equipment. The EV kit can also directly interface to the user's embedded design for easy data decoding.

The MAX7034 EV kit comes in two versions: 315MHz and 433.92MHz. The passive components are optimized for these frequencies. These components can easily be changed to work at RF frequencies from 300MHz to 450MHz. In addition, the received data rate can be adjusted from 0 to 66kbps by changing three more components.

For easy implementation into the customer's design, the MAX7034 EV kit also features a proven PC board layout, which can be easily duplicated for quicker time to market. The EV kit Gerber files are available for download at www.maximintegrated.com.

Features

- Proven PC Board Layout
- Proven Components Parts List
- Multiple Test Points Provided On Board
- Available in 315MHz or 433.92MHz Optimized Versions
- Adjustable Frequency Range from 300MHz to 450MHz*
- Fully Assembled and Tested
- Can Operate as a Stand-Alone Receiver with the Addition of an Antenna

*Requires component changes.

Quick Start

The following procedures allow for proper device evaluation.

Required Test Equipment

- Regulated power supply capable of providing +3.3V
- RF signal generator capable of delivering from -120dBm to 0dBm of output power at the operating frequency, with pulse-modulation capabilities (Agilent E4420B or equivalent)
- Optional ammeter for measuring supply current
- Oscilloscope

Connections and Setup

This section provides a step-by-step guide to operating the EV kit and testing the device's functionality. **Do not turn on the DC power or RF signal generator until all connections are made:**

- 1) Connect a DC supply set to +3.3V (through an ammeter if desired) to the VDD and GND terminals on the EV kit. Do not turn on the supply.
- 2) Connect the RF signal generator to the RF_IN SMA. Do not turn on the generator output. Set the generator for an output frequency of 315MHz (or 433.92MHz) at a power level of -100dBm. Set the modulation of the generator to provide a 2kHz pulse-modulated signal.
- 3) Connect the oscilloscope to test point TP3.
- 4) Turn on the DC supply. The supply current should read approximately 5mA.
- 5) Activate the RF generator's output without modulation. The scope should display a DC voltage that varies from approximately 1.2V to 2.0V as the RF generator amplitude is changed from -115dBm to 0dBm. (**Note:** At an amplitude of around -60dBm, this DC voltage drops suddenly to approximately 1.5V and then starts rising again with increasing input amplitude. This is normal; the AGC is turning on the LNA gain-reduction resistor.)
- 6) Set the RF generator to -100dBm. Activate the RF generator's modulation and set the scope's coupling to AC. The scope now displays a lowpass-filtered square wave at TP3 (filtered analog baseband data). Use the RF generator's LF OUTPUT (modulation output) to trigger the oscilloscope.

- 7) Connect the oscilloscope to the DATA_OUT test point.
- 8) Monitor the DATA_OUT terminal and verify the presence of a 2kHz square wave.

Additional Evaluation with Amplitude Modulation

- 1) Set the RF signal generator to amplitude modulation rather than pulse modulation and observe the effect of reducing the RF generator’s amplitude on the DATA_OUT terminal output. The error in this sliced digital signal increases with reduced RF signal level. The sensitivity is typically defined as the input RF power level where the receiver Bit Error Rate (BER) increases beyond a specified threshold. For the MAX7034 the BER threshold is specified at 0.2%.
- 2) With the above settings, a 315MHz-tuned EV kit should display a sensitivity of approximately -114dBm, while a 433.92MHz kit displays a sensitivity of approximately -112dBm. **Note:** The above sensitivity values are given in terms of average.
- 3) Capacitors C5 and C6 are used to set the corner frequency of the 2nd-order lowpass Sallen-Key data filter. The current values were selected for bit rates up to 3kbps. Adjusting these values accommodates higher data rates (refer to the MAX7034 data sheet for more details).

Layout Issues

A properly designed PC board is an essential part of any RF/microwave circuit. On high-frequency inputs and outputs, use controlled-impedance lines and keep them as short as possible to minimize losses and radiation. At high frequencies, trace lengths that are on the order of $\lambda/10$ or longer can act as antennas.

Keeping the traces short also reduces parasitic inductance. Generally, 1in of a PC board trace adds about 20nH of parasitic inductance. The parasitic inductance can have a dramatic effect on the effective inductance. For example, a 0.5in trace connecting a 100nH inductor adds an extra 10nH of inductance or 10%.

To reduce the parasitic inductance, use wider traces and a solid ground or power plane below the signal traces. Also, use low-inductance connections to ground on all GND pins, and place decoupling capacitors close to all VDD connections.

The EV kit PC board can serve as a reference design for laying out a board using the MAX7034. All required components have been enclosed in a 1.25in x 1.25in² area, which can be directly “inserted” into the application circuit.

Detailed Description

Power-Down Control

The MAX7034 can be controlled externally using the $\overline{\text{SHDN}}$ connector. The IC draws approximately 2.5 μA in shutdown mode. Jumper JU1 is used to control this mode. The shunt can be placed between pins 2 and 3 for continuous shut-down, or pins 1 and 2 for continuous operation. Remove JU1 shunt for external control. See [Table 1](#) for the jumper function descriptions.

Table 1. Jumper Function

JUMPER	STATE	FUNCTION
JU1	1-2	Normal operation
	2-3	Power-down mode
	N.C.	External power-down control
JU2	1-2	Crystal divide ratio = 32
	2-3	Crystal divide ratio = 64
JU3	1-2	Mixer output to MIX_OUT
	2-3	External IF input
	N.C.	Normal operation
JU4	1-2	Uses PDOUT for faster receiver startup
	2-3	GND connection for peak detector filter
	N.C.	Normal operation
JU5	1-2	Enable Internal Regulator
	2-3	Disable Internal Regulator
JU6	1-2	IR centered at 433MHz
	2-3	IR centered at 315MHz
	N.C.	IR centered at 375MHz
JU7	1-2	Connect VDD to +3.3V supply
	N.C.	Connect VDD to +5.0V supply
JU8	1-2	Connect Hysteresis Capacitor C22 to GND
	N.C.	Normal operation

Power Supply

The MAX7034 can operate from 3.3V or 5V supplies. For 5V operation, remove JU7 before connecting the supply to VDD. For 3.3V operation, connect JU7.

IF Input/Output

The 10.7MHz IF can be monitored with the help of a spectrum analyzer using the MIX_OUT SMA (not provided). Remove the ceramic filter for such a measurement and include R3 (270 Ω) and C17 (0.01 μF) to match

the 330Ω mixer output with the 50Ω spectrum analyzer. Jumper JU3 needs to connect pins 1 and 2. It is also possible to use the MIX_OUT SMA to inject an external IF as a means of evaluating the baseband data slicing section. Jumper JU3 needs to connect pins 2 and 3.

F_IN External Frequency Input

For applications where the correct frequency crystal is not available, it is possible to directly inject an external frequency through the F_IN SMA (not provided). Connect the SMA to a function generator. The addition of C18 and C19 is necessary (use 0.01μF capacitors).

Regulator Control

Jumper JU5 controls whether the internal regulator is enabled. Connect EN_REG, pin 15 to VDD5 with JU5 to enable the internal regulator. Connect EN_REG to Ground to allow device operation between + 3.0V and + 3.6V.

Crystal Select

Jumper JU2 controls the crystal-divide ratio. Connecting pins 1 and 2 sets the divide ratio to 32, while connecting pins 2 and 3 sets the ratio to 64. This determines the frequency of the crystal to be used.

Image-Rejection Frequency Select

A unique feature of the MAX7034 is its ability to control and thus optimize the image rejection frequency. JU6 allows the selection of three possible frequencies: 315MHz, 375MHz, and 433.92MHz. See [Table 1](#) for settings.

Test Points and I/O Connections

Additional test points and I/O connectors are provided to monitor the various baseband signals and for external connections. See [Table 2](#) and [Table 3](#) for a description.

For additional information and a list of application notes, visit www.maximintegrated.com.

Table 2. Test Points

TP	DESCRIPTION
2	Data slicer negative input
3	Data filter output
4	Peak detector out
5	+3.3V
6	GND
7	Data filter feedback node
8	Data out
9	Power-down select input
10	VDD
11	Regulator control
12	Crystal select

Table 3. I/O Connectors

SIGNAL	DESCRIPTION
RF_IN	RF input
F_IN	External reference frequency input
MIX_OUT	IF input/output
GND	Ground
VDD	Supply input
DATA_OUT	Sliced data output
SHDN	External power-down control
EN_REG	Internal regulator enable/disable

Component Suppliers

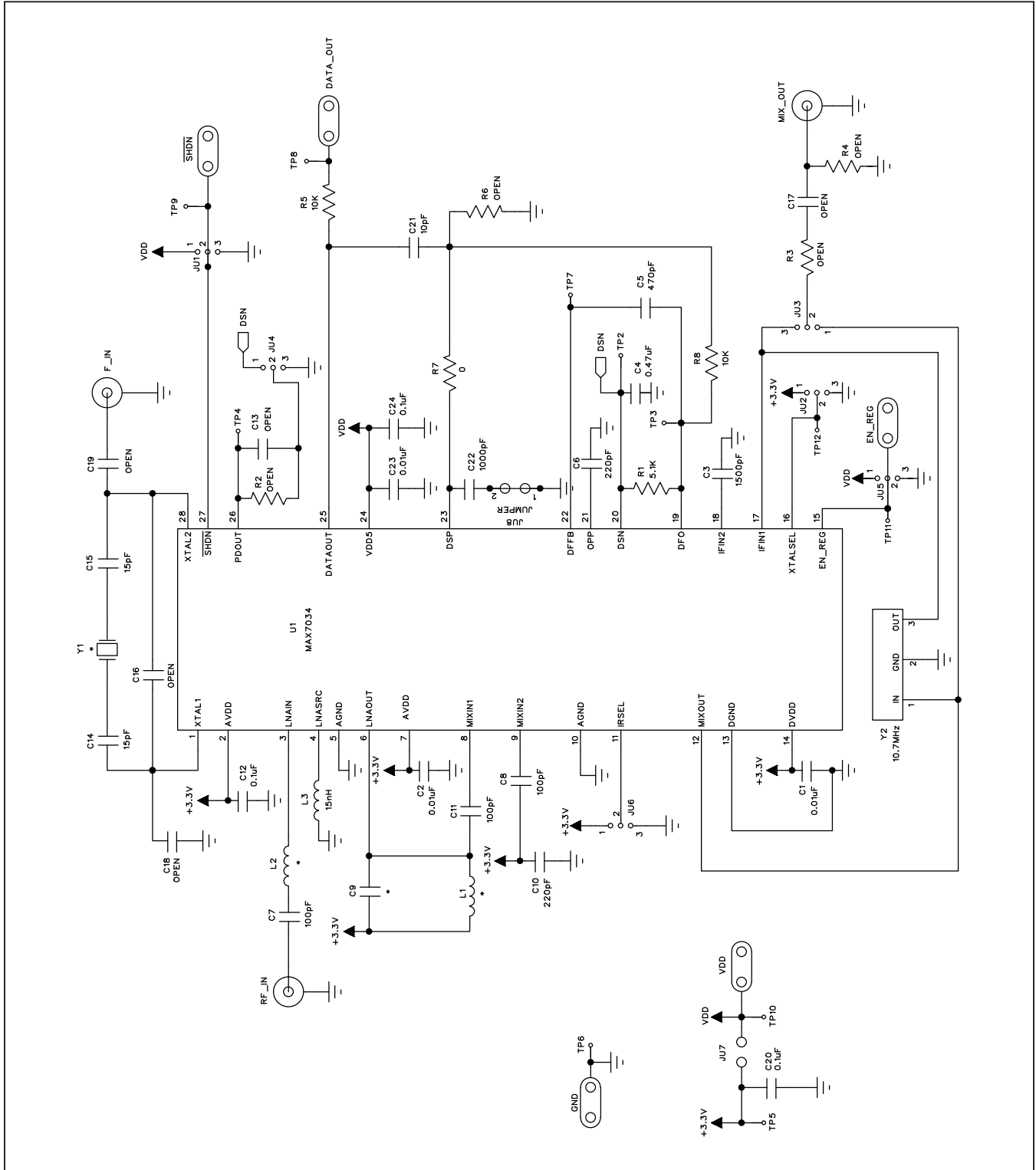
SUPPLIER	Website
Coilcraft	www.coilcraft.com/
Crystek	www.crystek.com
Hong Kong Crystal	www.hongkongcrystal.com/
Murata	www.murata.com

Note: Indicate that you are using the MAX7034 when contacting these component suppliers.

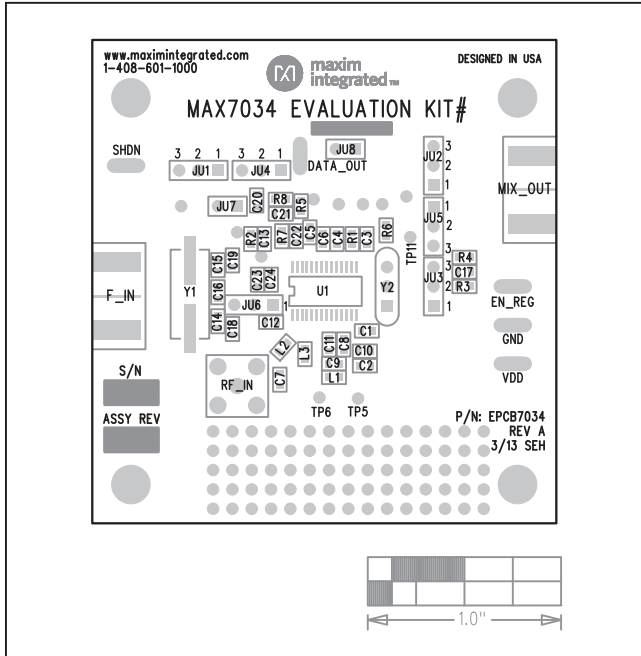
MAX7034 EV Kit Bill of Materials

DESIGNATION	QTY	DESCRIPTION
C1, C2, C23	3	0.01 μ F \pm 10% ceramic capacitors (0603) Murata GRM188R71H103KA01
C3	1	1500pF \pm 10%, 50V X7R ceramic capacitor (0603) Murata GRM188R71H152KA01
C4	1	0.47 μ F 80% to 20% ceramic capacitor (0603) Murata GRM188F51C474ZA01
C5	1	470pF \pm 5% ceramic capacitor (0603) Murata GRM1885C1H471JA01
C6, C10	2	220pF \pm 5% ceramic capacitors (0603) Murata GRM1885C1H221JA01
C7, C8, C11	3	100pF \pm 5% ceramic capacitors (0603) Murata GRM1885C1H101JA01
C9	0	Not Installed
C12, C20, C24	3	0.1 μ F \pm 5% ceramic capacitors (0603) Murata GRM188R71C104KA01
C13, C16, C18, C19	0	Not installed
C14, C15	2	15pF \pm 5%, 50V ceramic capacitors (0603) Murata GRM1885C1H150JZ01
C17	0	Not installed, 0.01 μ F 80% to 20% ceramic capacitor (0603) Murata GRM188R71H103KA01
C21	1	10pF \pm 5%, 50V ceramic capacitor (0603) Murata GRM1885C1H100JZ01
C22	1	1000pF \pm 10%, 50V X7R ceramic capacitor (0603) Murata GRM188R71H102KA01
F_IN	0	Not installed, SMA connector, edge mount Johnson 142-0701-801
JU1, JU2, JU5, JU6	4	3-pin headers Digi-Key S1012-36-ND or equivalent
JU3, JU4	0	Not installed
JU7	1	2-pin header
JU8	1	Shorted
L1 (315MHz)	1	27nH \pm 5% inductor (0603) Coilcraft 0603CS-27NXJB
L1 (433MHz)	1	15nH \pm 5% inductor (0603) Coilcraft 0603CS-15NXJB
L2 (315MHz)	1	120nH \pm 5% inductor (0603) Coilcraft 0603CS-R12XJB
L2 (433MHz)	1	56nH \pm 5% inductor (0603) Coilcraft 0603CS-56NXJB
L3	1	15nH \pm 5% inductor (0603) Murata LQG18HN15NJ00
MIX_OUT	0	Not installed, SMA connector, top mount Digi-Key J500-ND Johnson 142-0701-201
R1	1	5.1k Ω resistor (0603), any
R2, R4, R6	0	Not installed, resistors (0603)
R3	0	Not installed, 270 Ω resistor (0603) any
R5	1	10k Ω resistor (0603), any
R7	1	0 Ω resistor (0603)
R8	1	10k Ω resistor (0603), any
RF_IN	1	SMA connector, top mount Digi-Key J500-ND Johnson 142-0701-201
TP2, TP4–TP12	0	Not installed
VDD, GND, SHDN, AGC_C, DATA_OUT, TP3	6	Test points Mouser 151-203 or equivalent
Y1 (315MHz)	1	4.754687MHz crystal Hong Kong Crystals SSL4754687E03FAFZ8A0 or Crystek 016867
Y1 (433MHz)	1	6.6128MHz crystal Hong Kong Crystals SSL6612813E03FAFZ8A0 or Crystek 016868
Y2	1	10.7MHz ceramic filter Murata SFTLA10M7FA00-B0
U1	1	MAX7034EUI

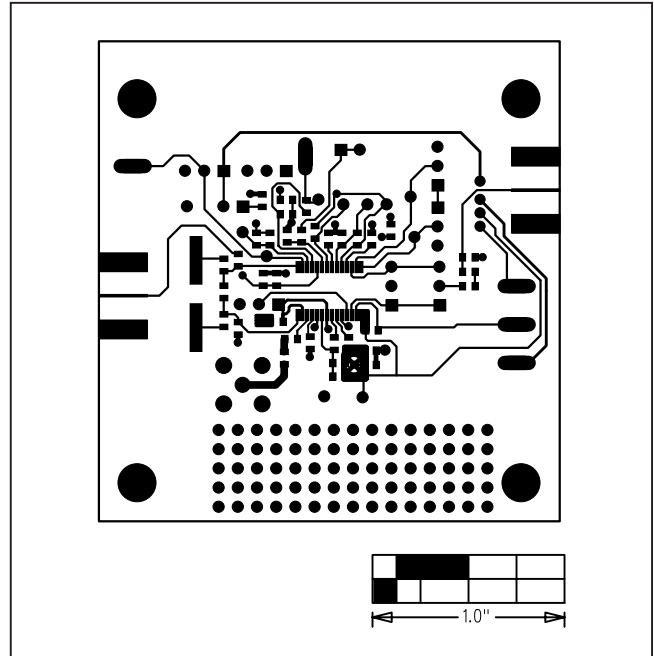
MAX7034 EV Kit Schematic



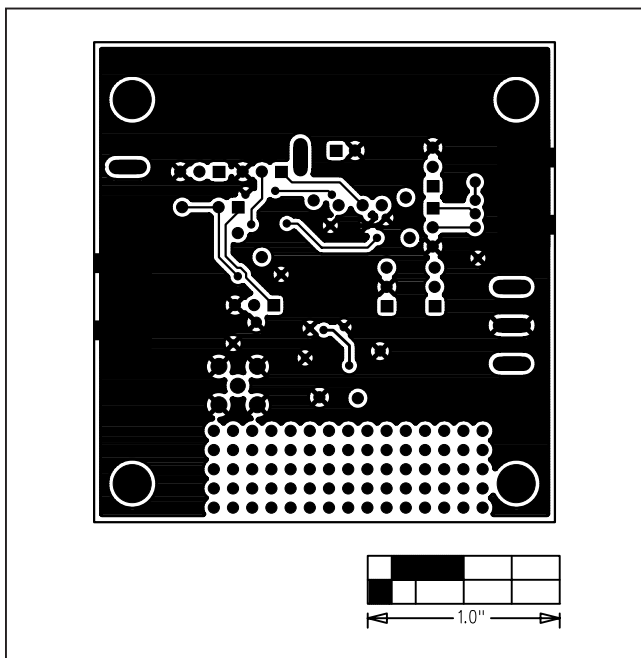
MAX7034 EV Kit PCB Layout Diagrams



MAX7034 EV Kit Component Placement Guide—Component Side



MAX7034 EV Kit PC Board Layout—Component Side



MAX7034 EV Kit PC Board Layout—Solder Side

Ordering Information

PART	TEMP RANGE	IC PACKAGE
MAX7034EVKIT-315#	-40°C to +85°C	28 TSSOP
MAX7034EVKIT-433#	-40°C to +85°C	28 TSSOP

Revision History

REVISION NUMBER	REVISION DATE	DESCRIPTION	PAGES CHANGED
0	4/17	Initial release	—

For pricing, delivery, and ordering information, please contact Maxim Direct at 1-888-629-4642, or visit Maxim Integrated's website at www.maximintegrated.com.

Maxim Integrated cannot assume responsibility for use of any circuitry other than circuitry entirely embodied in a Maxim Integrated product. No circuit patent licenses are implied. Maxim Integrated reserves the right to change the circuitry and specifications without notice at any time.