



SOT1235

LFPAK88; Reel pack, SMD, 13"; Q1/T1 standard product orientation; Orderable part number ending ,118 or Z; Ordering code (12NC) ending 118

Rev. 1 — 28 January 2019

Packing information

1 Packing method

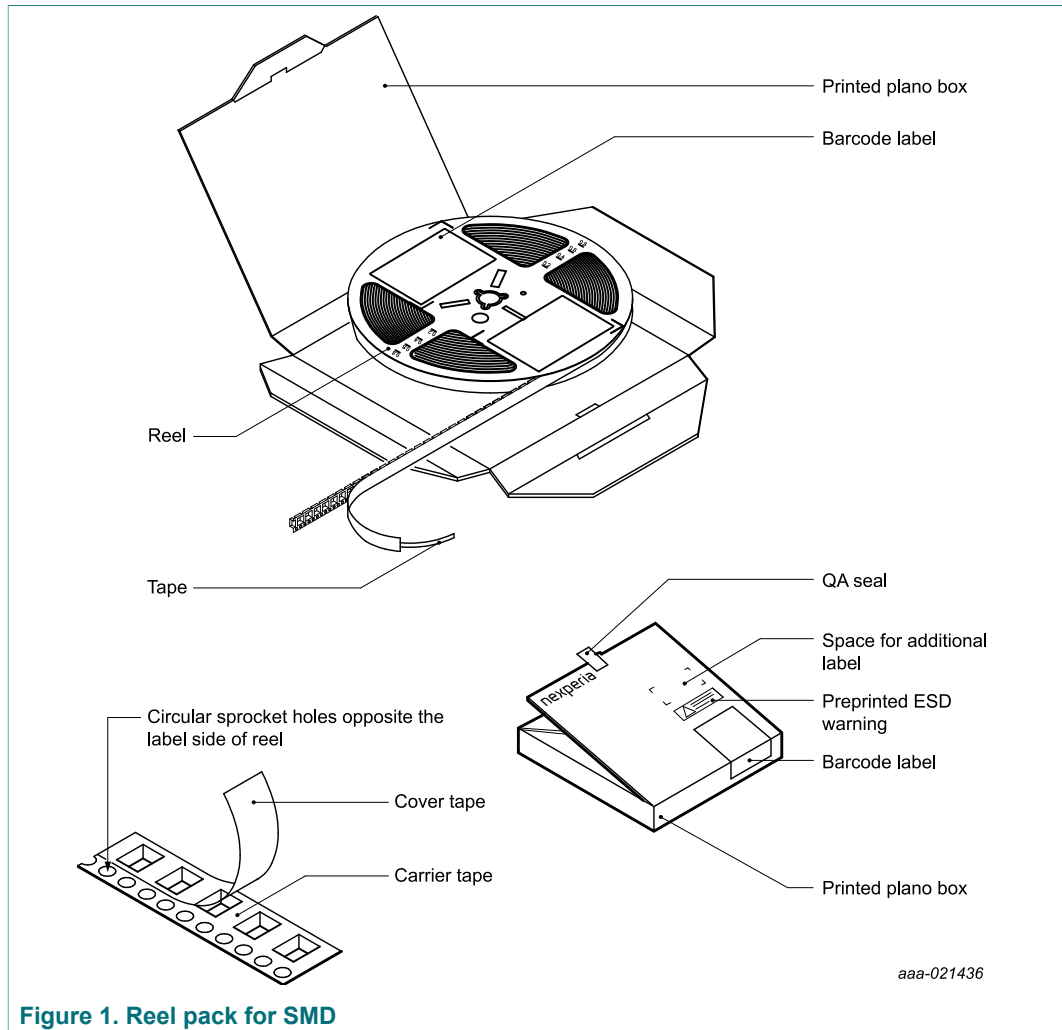


Figure 1. Reel pack for SMD

LFLPAK88; Reel pack, SMD, 13"; Q1/T1 standard product orientation; Orderable part number ending ,118 or Z; Ordering code (12NC) ending 118

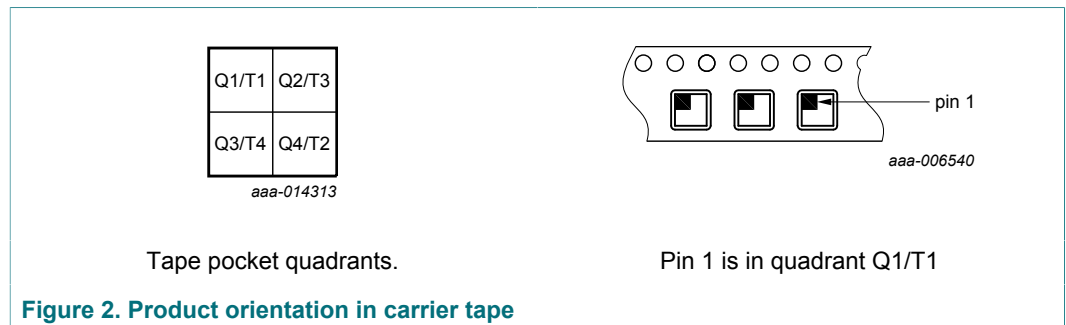
Table 1. Dimensions and quantities

| Reel dimensions d × w (mm) ^[1] | SPQ/PQ (pcs) ^[2] | Reels per box | Outer box dimensions l × w × h (mm) |
|--|-----------------------------|------------------|--|
| 330 × 16 | 2 000 | 1 | 342 × 338 × 31 |

[1] d = reel diameter; w = tape width.

[2] Packing quantity dependent on specific product type. Please contact your local Nexperia representative for ordering.

2 Product orientation



3 Carrier tape dimensions

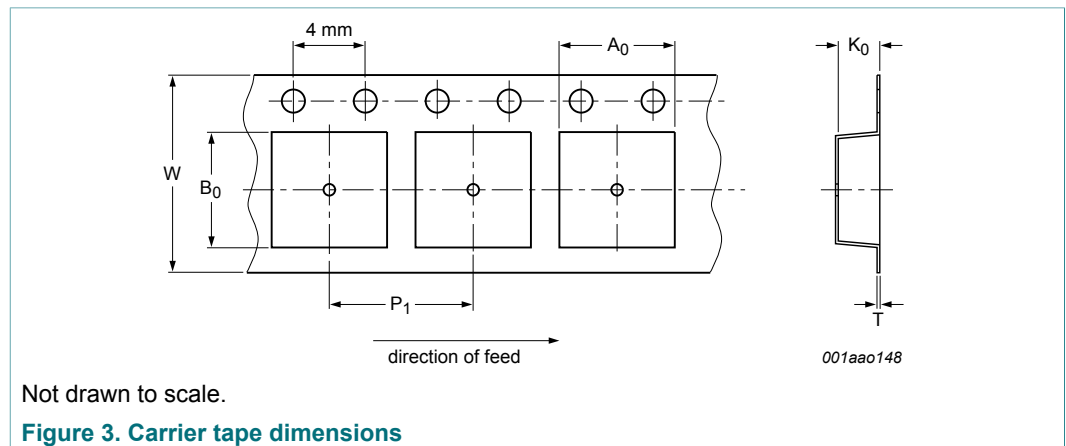


Table 2. Carrier tape dimensions

In accordance with IEC 60286-3.

| A ₀ (mm) | B ₀ (mm) | K ₀ (mm) | T (mm) | P ₁ (mm) | W (mm) |
|---------------------|---------------------|---------------------|-------------|---------------------|--------------------|
| 8.55 ± 0.10 | 8.40 ± 0.10 | 2.00 ± 0.10 | 0.30 ± 0.03 | 12.0 ± 0.1 | 16.0 + 0.3 / - 0.1 |

4 Reel dimensions

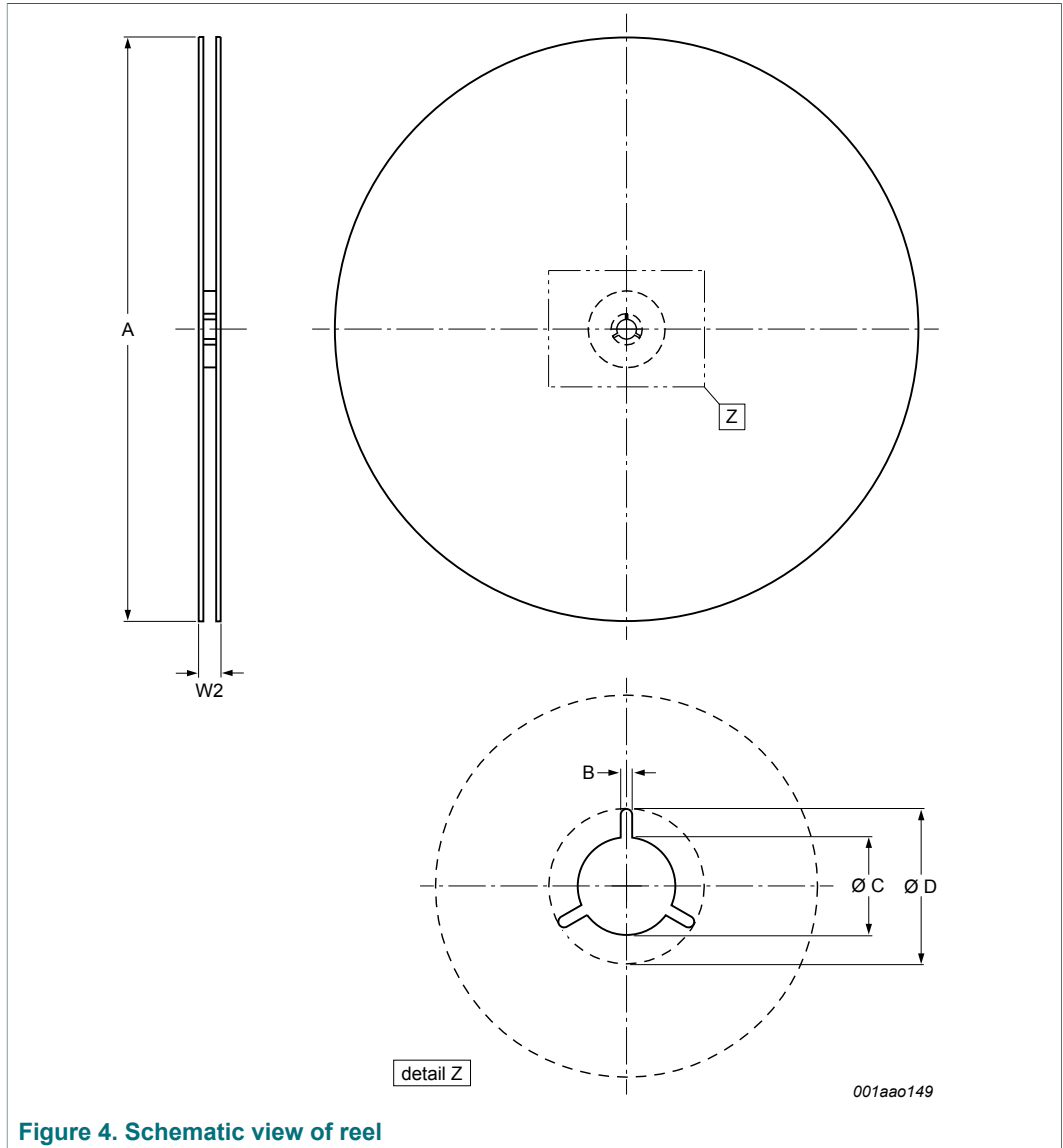


Figure 4. Schematic view of reel

Table 3. Reel dimensions

In accordance with IEC 60286-3.

| A [nom] (mm) | W2 [max] (mm) | B [min] (mm) | C [min] (mm) | D [min] (mm) |
|-----------------|------------------|-----------------|-----------------|-----------------|
| 330 | 22.4 | 1.5 | 12.8 | 20.2 |

LFPAK88; Reel pack, SMD, 13"; Q1/T1 standard product orientation; Orderable part number ending ,118 or Z; Ordering code (12NC) ending 118

5 Barcode label

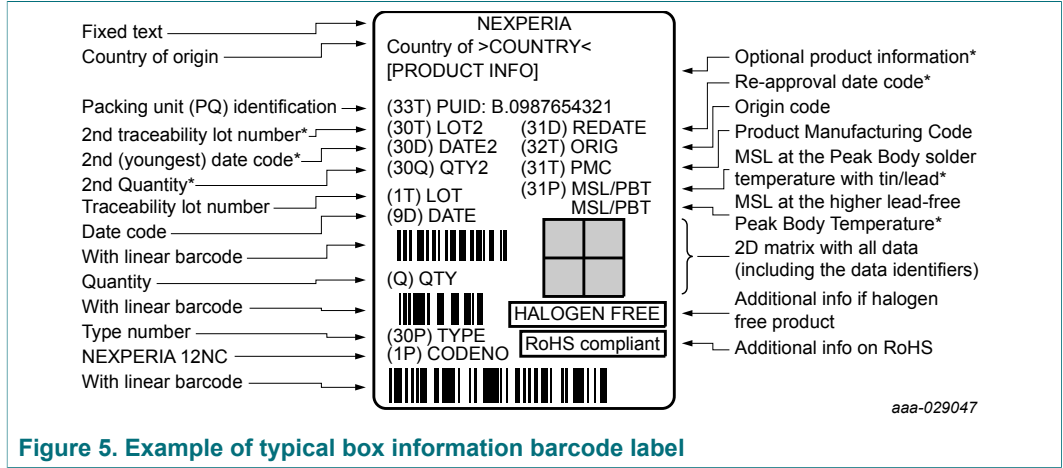


Figure 5. Example of typical box information barcode label

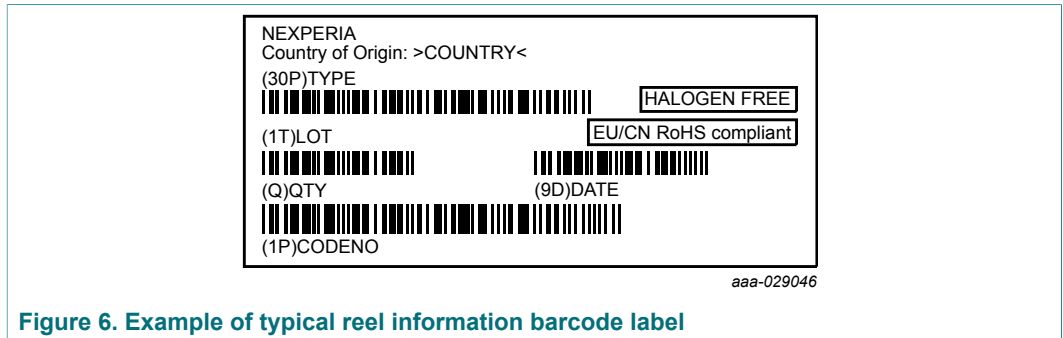


Figure 6. Example of typical reel information barcode label

Table 4. Barcode label dimensions

| Box barcode label l × w (mm) | Reel barcode label l × w (mm) |
|---------------------------------|----------------------------------|
| 100 × 75 | 36 × 75 |

LFPAK88; Reel pack, SMD, 13"; Q1/T1 standard product orientation; Orderable part number ending ,118 or Z; Ordering code (12NC) ending 118

6 Revision history

Table 5. Revision history

| Document ID | Release date | Packing document status | Change notice | Supersedes |
|-----------------|--------------|-------------------------|---------------|------------|
| SOT1235_118 v.1 | 20190128 | Packing information | - | - |

LFP88; Reel pack, SMD, 13"; Q1/T1 standard product orientation; Orderable part number ending ,118 or Z; Ordering code (12NC) ending 118

Contents

| | | |
|---|-------------------------------|---|
| 1 | Packing method | 1 |
| 2 | Product orientation | 2 |
| 3 | Carrier tape dimensions | 2 |
| 4 | Reel dimensions | 3 |
| 5 | Barcode label | 4 |
| 6 | Revision history | 5 |

Please be aware that important notices concerning this document and the product(s) described herein, have been included in section 'Legal information'.

© Nexperia B.V. 2019.

All rights reserved.

For more information, please visit: <http://www.nexperia.com>

For sales office addresses, please send an email to: salesaddresses@nexperia.com

Date of release: 28 January 2019