

Application-Specific Information

PowerPC 604e™ RISC Microprocessor Family: PIDAq-604e and PID9q-604e (Mach5) Part Number Specifications

This document defines a unique part number for a PowerPC 604e microprocessor manufactured by Motorola. It describes changes to recommended operating conditions and revised electrical specifications, as applicable, from those described in the *PowerPC 604e RISC Microprocessor Family: PID9q-Mach5 Hardware Specifications*. Any functional differences (errata) for these parts from the functional description provided in the *PowerPC™ 604 RISC Microprocessor User's Manual* (order # MPC604UM/AD) or its addendum (order # MPC604UMAD/AD) are described in a separate Errata List available from your local Motorola sales office.

Specifications provided in this data sheet supercede those in 4/97 Revision of the *PID9q-Mach5 Hardware Specifications* (order #: MPC604E9QEC/D); specifications not addressed herein are unchanged. This document is frequently updated; refer to the website at <http://www.mot.com/SPS/PowerPC/> for the latest version.

Note that headings and tables in this data sheet are not numbered; however, they are intended to correspond directly to the heading or table affected in the general hardware specifications. Any additional information (including tables) not included in the hardware specifications are noted.

Part numbers addressed in this document and a summary of their differences from the general specification are listed in the following table. For more detailed ordering information see "Ordering Information for the PB-604e Microprocessor" on page 2.

Part Numbers Addressed by this Data Sheet

Motorola Part Number	Operating Conditions			Significant Differences from Hardware Specification
	CPU Frequency	Vdd	T _J (°C)	
XPC604RRX266LD	266 MHz	1.80 to 2.00V	0 to 85	New PVR.; BTAC Disabled
XPC604RRX300LD	300 MHz	1.80 to 2.00V	0 to 85	New PVR ; BTAC Disabled
XPC604RRX333LD	333 MHz	1.80 to 2.00V	0 to 85	New PVR ; BTAC Disabled

Note: The X prefix in a Motorola PowerPC part number designates a "Pilot Production Prototype" as defined by Motorola SOP 3-13. These are from a limited production volume of prototypes manufactured, tested and Q.A. inspected on a qualified technology to simulate normal production. These parts have only preliminary reliability and characterization data. Before pilot production prototypes may be shipped, written authorization from the customer must be on file in the applicable sales office acknowledging the qualification status and the fact that product changes may still occur while shipping pilot production prototypes.

Feature Changes

This section summarizes significant feature changes between the revision of the PID9q-604e addressed by this document and the previously available revision 1.01 (XPC604RRXnnnPB where nnn is the CPU frequency) and revision 1.1 (XPC604RRXnnnPC).

- Errata #7 from these earlier revisions is corrected on revision 1.2.

The following features are significantly different from the feature set described in the *PowerPC 604 RISC Microprocessor User's Manual* (order # MPC604UM/AD) or its addendum (order # MPC604UMAD/AD). While they are unchanged from revisions 1.01 and 1.1, they bear repeating here.

- In-system testability and debugging features through JTAG boundary-scan capability is not guaranteed in these part revisions.

The PowerPC name, the PowerPC logotype, and PowerPC 604e are trademarks of International Business Machines Corporation used by Motorola under license from International Business Machines Corporation.

This document contains information on a new product under development by Motorola. Motorola reserves the right to change or discontinue this product without notice.

© Motorola Inc. 1998. All rights reserved.

- These part revisions will have different processor version register (PVR) contents. This register is a read-only register that identifies the version (model) and revision level of the PowerPC processor. The processor version is 0x000a for revision 1.01 parts and is 0x0009 for revision 1.1 and revision 1.2 parts. The processor version for revision 1.01 is 0x0101 and for revision 1.1 is 0x2110 and for revision 1.2 is 0x2111. This change was made to ensure compatibility with other members of the 604e family of microprocessors.
- The revision 1.1 and revision 1.2 parts have the Branch Target Address Cache (BTAC) disabled.

Ordering Information

The following table provides the ordering information for the unique part numbers described herein.

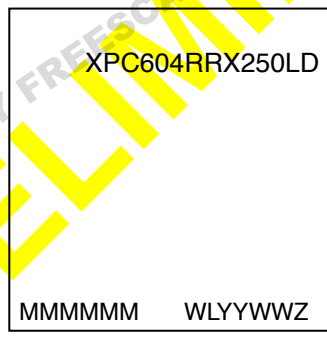
Ordering Information for the PB-604E Microprocessor

Package Type	Device Rev	Process	Mask Code	CPU Frequency (MHz)	Motorola Part Number*
255 CBGA	1.2	HIP4.0	74H76K	250 MHz	XPC604RRX250LD
				300 MHz	XPC604RRX300LD
				333 MHz	XPC604RRX333LD

Note: Per 604E-PE Part Number Specifications

Part Marking

This section provides information on Motorola device marking. Parts are marked as shown below.



BGA

Notes:

- MMMMMM is the 6-digit mask code
- WLYYWWZ is the traceability code

Motorola Part Marking for BGA Devices

Information in this document is provided solely to enable system and software implementers to use PowerPC microprocessors. There are no express or implied copyright licenses granted hereunder to design or fabricate PowerPC integrated circuits or integrated circuits based on the information in this document.

Motorola reserves the right to make changes without further notice to any products herein. Motorola makes no warranty, representation or guarantee regarding the suitability of its products for any particular purpose, nor does Motorola assume any liability arising out of the application or use of any product or circuit, and specifically disclaims any and all liability, including without limitation consequential or incidental damages. "Typical" parameters can and do vary in different applications. All operating parameters, including "Typicals" must be validated for each customer application by customer's technical experts. Motorola does not convey any license under its patent rights nor the rights of others. Motorola products are not designed, intended, or authorized for use as components in systems intended for surgical implant into the body, or other applications intended to support or sustain life, or for any other application in which the failure of the Motorola product could create a situation where personal injury or death may occur. Should Buyer purchase or use Motorola products for any such unintended or unauthorized application, Buyer shall indemnify and hold Motorola and its officers, employees, subsidiaries, affiliates, and distributors harmless against all claims, costs, damages, and expenses, and reasonable attorney fees arising out of, directly or indirectly, any claim of personal injury or death associated with such unintended or unauthorized use, even if such claim alleges that Motorola was negligent regarding the design or manufacture of the part.

Motorola and are registered trademarks of Motorola, Inc. Motorola, Inc. is an Equal Opportunity/Affirmative Action Employer.
IBM is a registered trademark of International Business Machines Corporation.