

# Integrated Miniaturized Antenna for 838~898 MHz ISM Band Wireless RF Applications

**TCA14A** is an advanced, surface-mount(SMT) integrated antenna for use in various wireless products, ideal for high-sensitivity and low profile design.



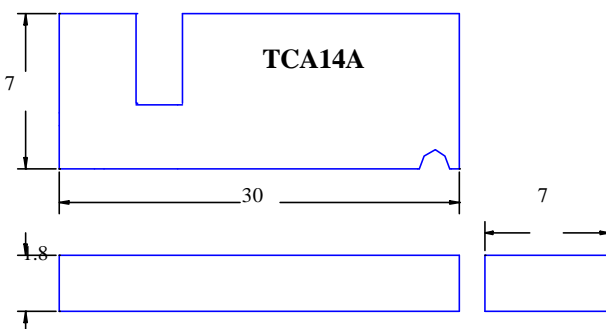
### Features:

- Miniaturized size
- Omni-direction
- Low interference design
- Wide bandwidth
- Light weight
- High gain

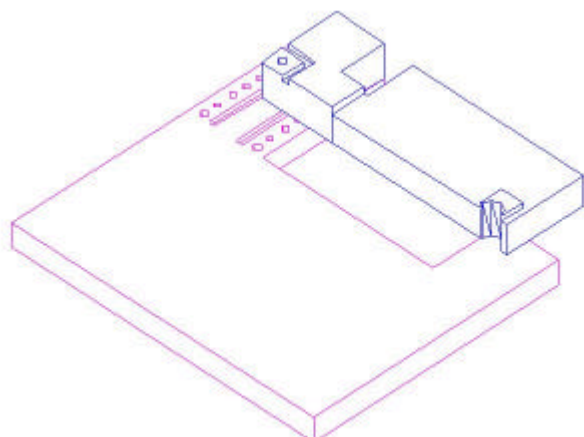
### Specification

- |                    |            |
|--------------------|------------|
| • Part No.         | TCA14A     |
| • Center Frequency | 868MHz     |
| • Band width       | 60MHz      |
| • Typical Gain     | 1.0dBi     |
| • Operating Temp.  | -20°C~70°C |
| • Storage Temp.    | -20°C~90°C |
| • Weight           | 0.8g       |

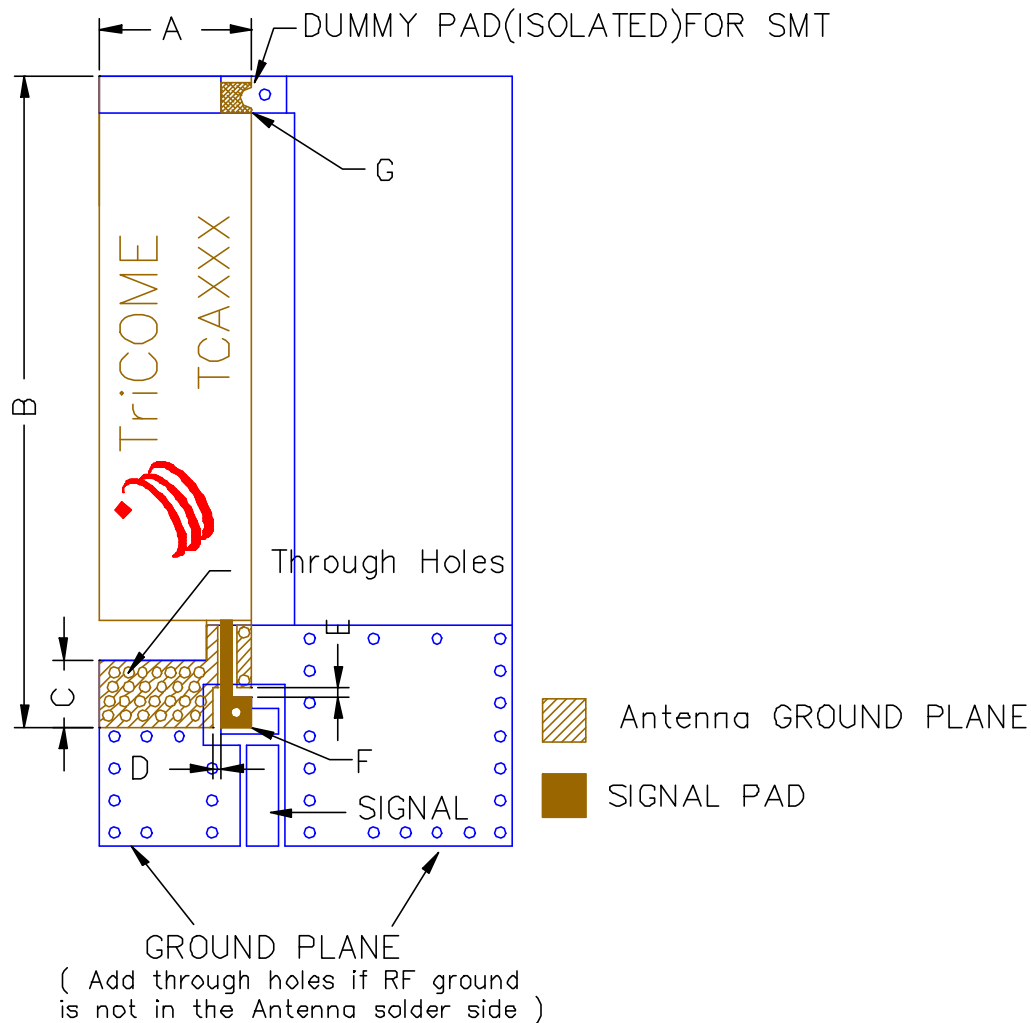
### Outline of TCA14A(unit:mm)



### Typical SMT Installation

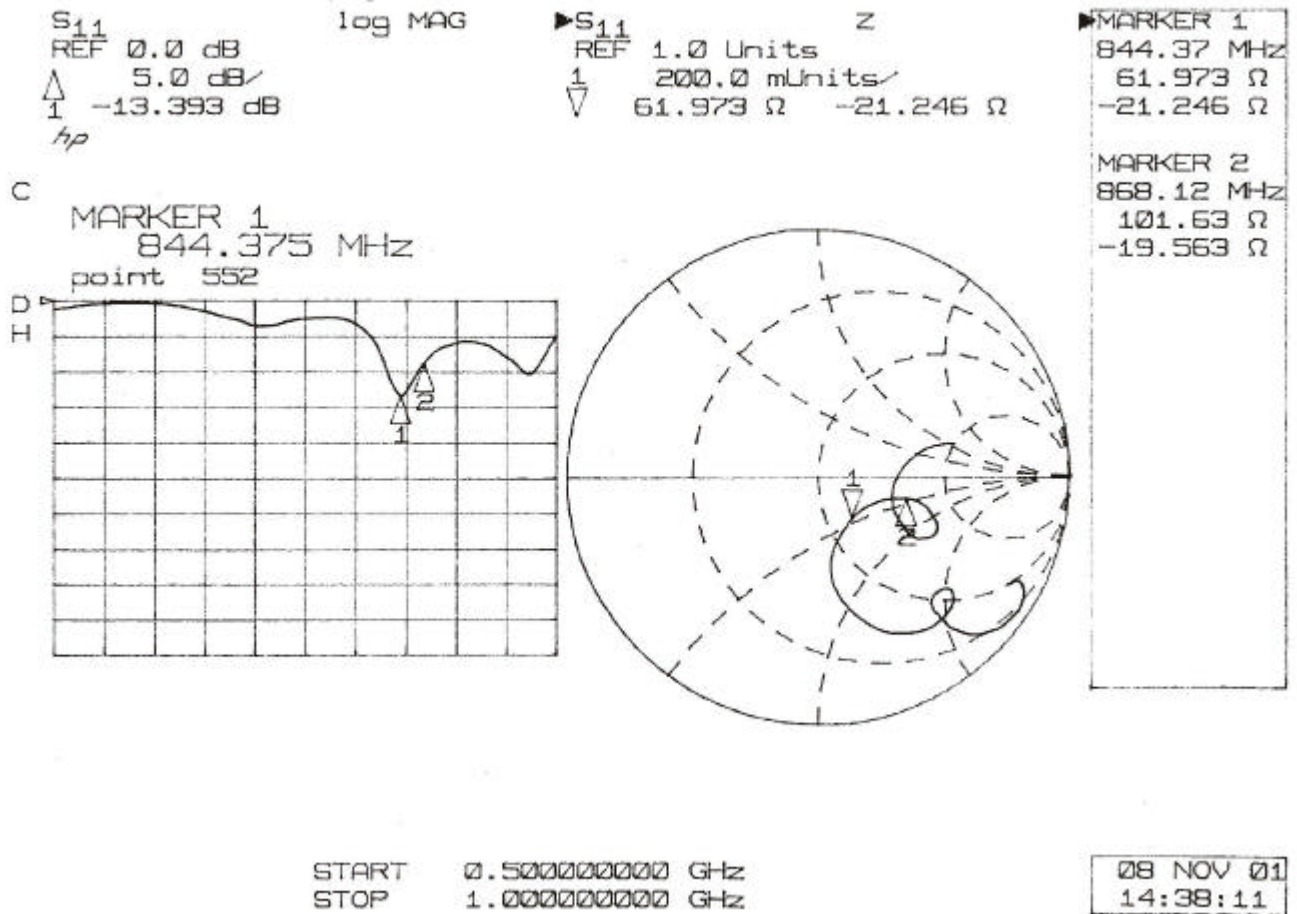


### Lavout Guide (unit:mm)



A	7mm
B	30mm
C	3.1mm
D	0.4mm
E	0.4mm
F	1.4x1.4mm
G	1.4x1.4mm

## Input Characteristics



This specification, prepared by TriCOME, is believed to be accurate and reliable. But TriCOME reserves the right to make any change or improvement without further notice.