

Piezo Haptics With Integrated Waveforms: DRV2605L-Q1 and DRV2700

ABSTRACT

The DRV2700 is a high-voltage piezo driver with an analog input. This device is one of the many haptic feedback drivers that Texas Instruments™ offers. One design challenge many customers face using the DRV2700 is the analog input. Generating an analog input signal can burden the processor and be undesirable. This application note addresses this challenge and provides a solution.

Contents

1	Introduction	2
2	Bandwidth.....	3
3	DRV2605L-Q1 Setup.....	4
4	DRV2700 Setup.....	4
5	Test Results	5

List of Figures

1	Block Diagram.....	2
2	Amp Gain Bandwidth VBST 30 V	3
3	Am Gain Bandwidth VBST 55 V	3
4	Amp Gain Bandwidth VBST 80 V	3
5	Amp Gain Bandwidth VBST 105 V	3
6	Final Test Setup	5
7	6
8	6
9	6
10	6

List of Tables

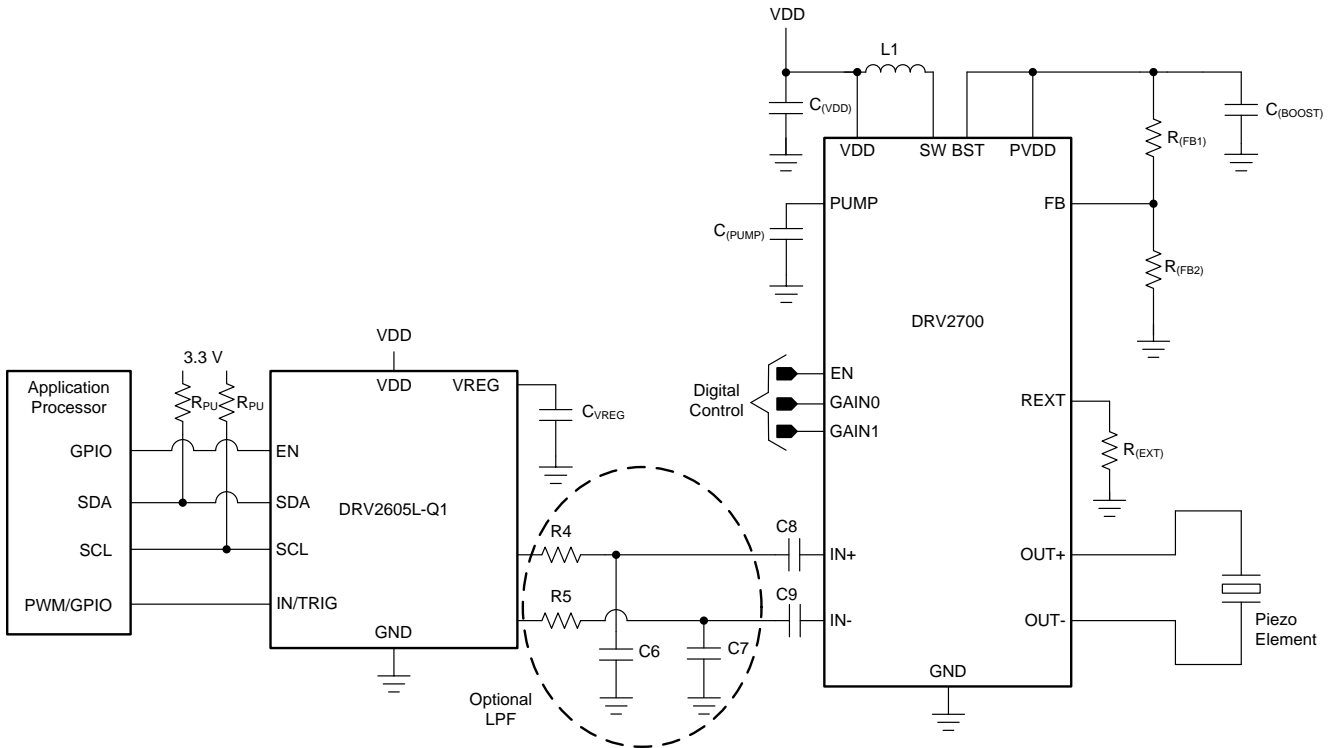
1	DRV2605L-Q1 Settings.....	4
2	Programmable Gains.....	4

Trademarks

Texas Instruments is a trademark of Texas Instruments.
 All other trademarks are the property of their respective owners.

1 Introduction

The DRV2605 family of drivers (including the DRV2605L and DRV2605L-Q1) offer integrated waveforms that ship with the device. These drivers use a Class-D output stage that switches around 20 kHz. With the use of a simple low-pass filter, the DRV2605L-Q1 can be used as an input to the DRV2700. [Figure 1](#) shows the block diagram for this solution.



Copyright © 2017, Texas Instruments Incorporated

Figure 1. Block Diagram

This configuration (see [Figure 1](#)) makes it possible to play waveforms through I²C from the DRV2605L-Q1 to the DRV2700. The DRV2700 amplifies the input signal to the desired voltage to drive the piezo element. This voltage can be 200 V_{pp} differentially or 500 V_p with the use of a flyback. There are a few configuration details that must be considered when using this setup.

2 Bandwidth

The bandwidth for the DRV2700 is a function on the piezo load capacitance. [Figure 2](#), [Figure 3](#), [Figure 4](#), and [Figure 5](#) show the relationship between the DRV2700 output voltage and frequency. For most cases, the frequency will be well below the 20-kHz level. In this case, the low-pass filter between the DRV2605L-Q1 and DRV2700 is optional. For best practice, TI recommends using a simple first order low-pass filter along with DC blocking capacitors (C8 and C9 in [Figure 1](#)).

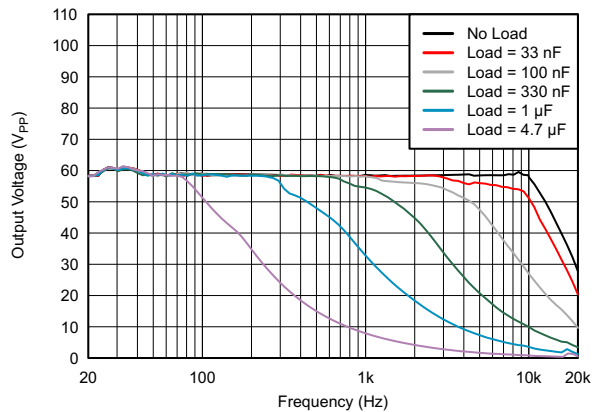


Figure 2. Amp Gain Bandwidth VBST 30 V

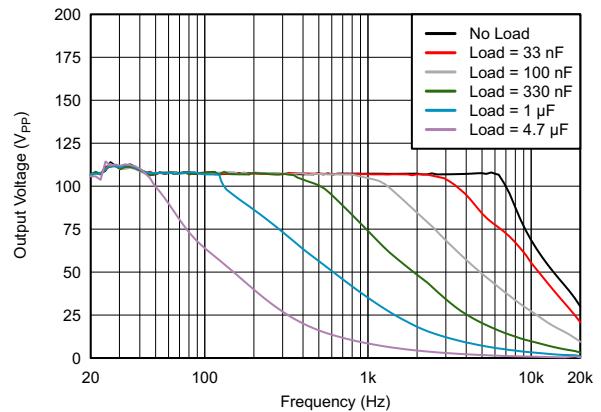


Figure 3. Am Gain Bandwidth VBST 55 V

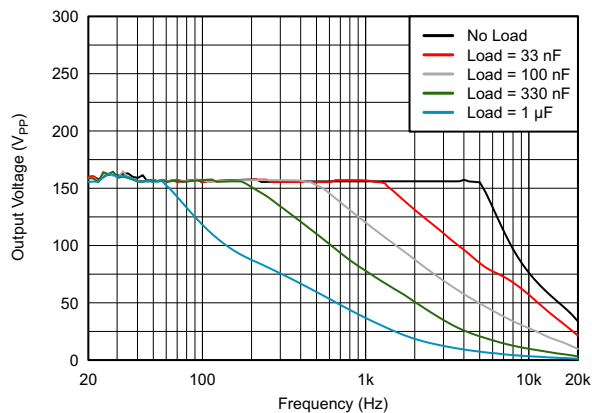


Figure 4. Amp Gain Bandwidth VBST 80 V

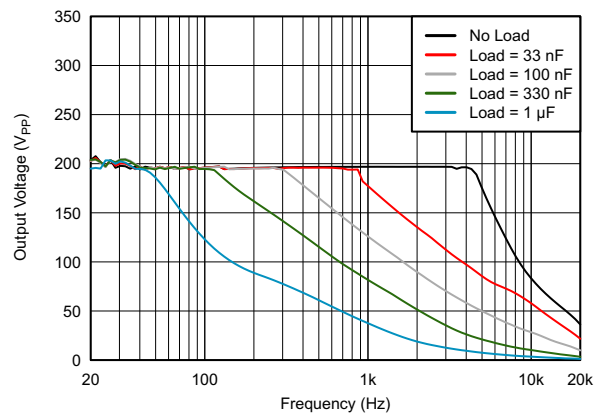


Figure 5. Amp Gain Bandwidth VBST 105 V

3 DRV2605L-Q1 Setup

The DRV2605L-Q1 can be configured in closed or open-loop mode. The closed-loop mode is used to track the BEMF voltage when driving LRAs and ERMs. For this use case, the DRV2605L-Q1 should be configured in open-loop mode by changing the register 0x1D. Next, users should select the appropriate frequency using register 0x20. The output voltage will be based on the OD_Clamp setting (register 0x17). The DRV2700 gain settings are optimized for 1.8- V_p input signal. Therefore, the OD_Clamp should be set near 1.8 V_p . Finally, the waveform must be selected using the waveform sequencer. Refer to [DRV2605L-Q1 Automotive Haptic Driver for LRA and ERM with Effect Library and Smart-Loop Architecture](#) for a list of the available waveforms. To trigger the waveform, there are a wide variety options including: external level trigger, external pulse trigger, and internal trigger mode. External trigger modes uses the TRIG pin, and the internal trigger activates through I²C. [Table 1](#) lists a summary of these settings.

Table 1. DRV2605L-Q1 Settings

DRV2605L-Q1 Setting	Register	Value
Open-loop output voltage	0x1D	0x5C
Open-loop frequency	0x20	240 Hz (0x2A)
OD_Clamp (V_{OUT})	0x17	0x55
Waveform sequencer 1	0x04	User choice

4 DRV2700 Setup

The DRV2700 should be set to the appropriate boost voltage and gain setting based on the piezo being driven. [Table 2](#) lists four gain settings that are tuned to four configurations for the boost voltage. The gain settings are hardware selected through the two gain pins. The boost voltage should be set by configuring the feedback resistors between VBST, FB, and GND.

Table 2. Programmable Gains

GAIN1	GAIN0	Gain (dB)
0	0	28.8
0	1	34.8
1	0	38.4
1	1	40.7

5 Test Results

For the final test results, connect the DRV2605LEVM-CT and the DRV2700EVM as shown in [Figure 6](#). For this test, a few different waveforms from the DRV2605L library were selected. The piezo element being tested is a piezo bender with the following dimensions: 38 mm x 3.8 mm x 3.2 mm. The piezo is attached to a 100-g metal block, and the acceleration is tested using the [DRV-ACC16-EVM](#) (see [DRV-ACC16-EVM Accelerometer User's Guide](#)).

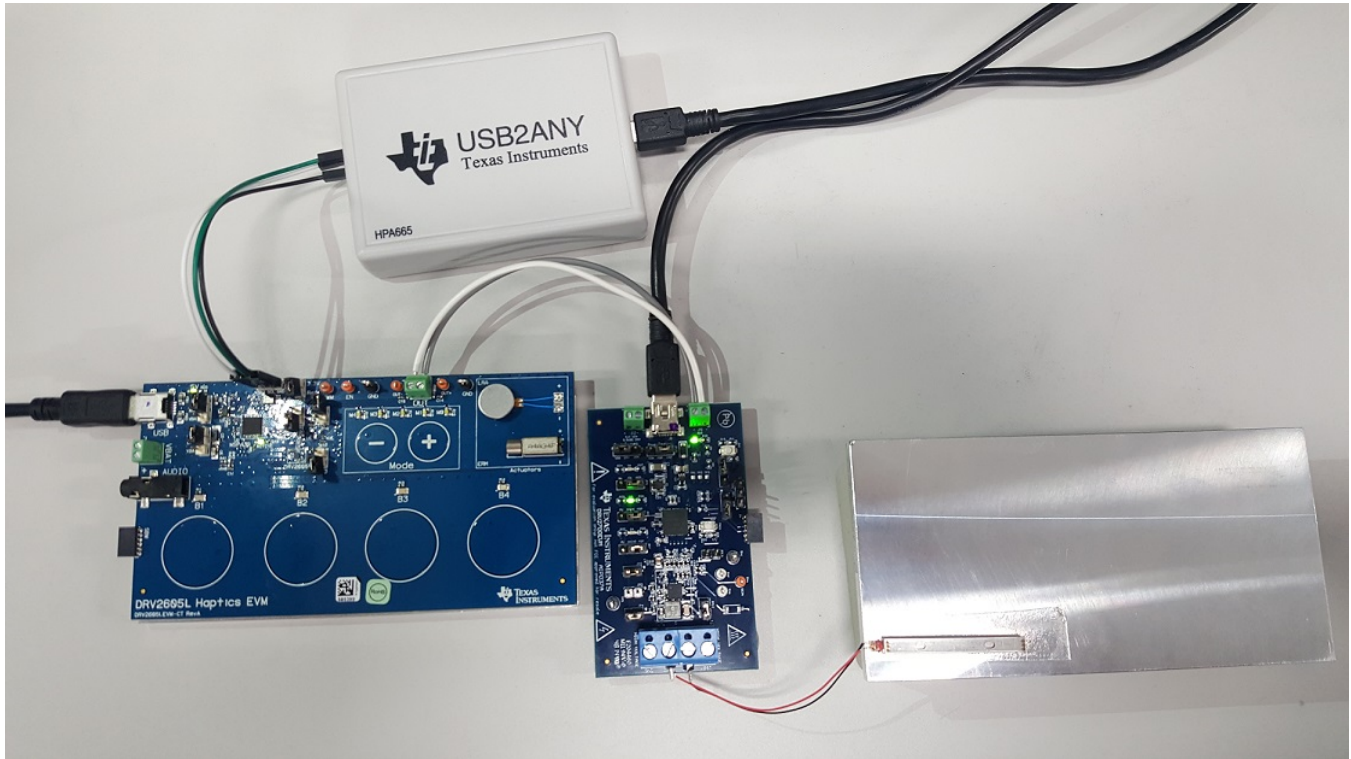


Figure 6. Final Test Setup

To optimize performance, the BRT setting (0x10) must be set to -20 ms (0xFC). This signed register removes braking. The output of the DRV2605LEVM is connected to the input jumper (J5) on the DRV2700EVM. The input goes through a second order low-pass filter and DC blocking capacitors. [Figure 7](#), [Figure 8](#), [Figure 9](#), and [Figure 10](#) show the differential output voltage and piezo acceleration profile of the DRV2700 for four different waveforms in the DRV2605L library (same as the DRV2605L-Q1).

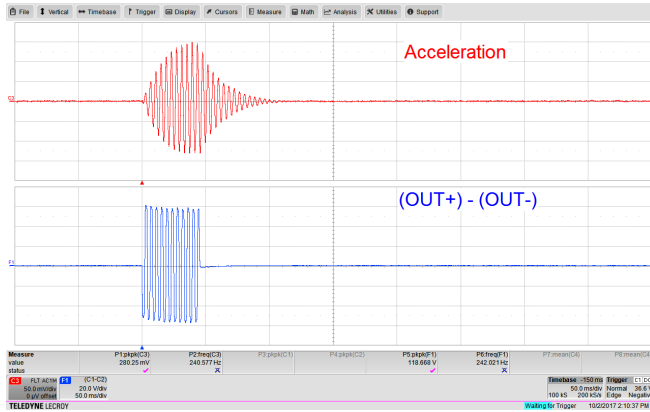


Figure 7.

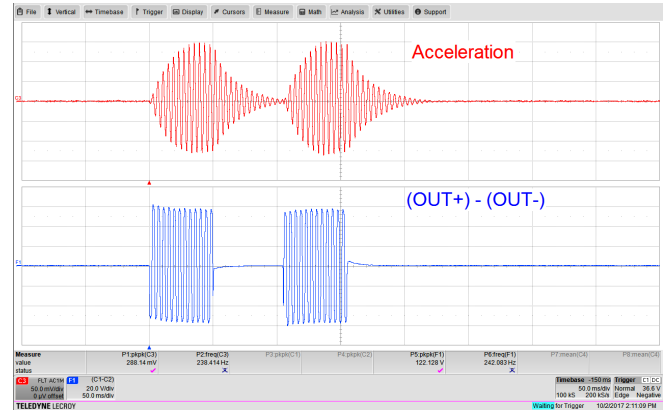


Figure 8.

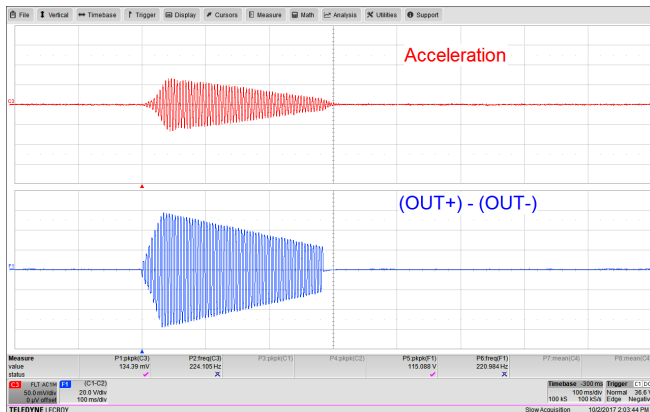


Figure 9.

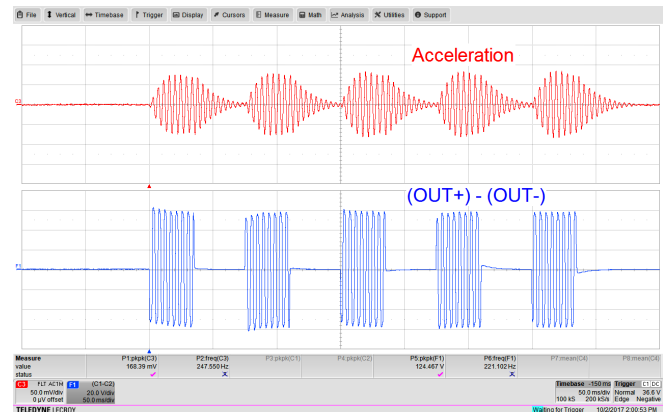


Figure 10.

Revision History

NOTE: Page numbers for previous revisions may differ from page numbers in the current version.

Date	Revision	Description
October 2017	*	Initial release

IMPORTANT NOTICE FOR TI DESIGN INFORMATION AND RESOURCES

Texas Instruments Incorporated ("TI") technical, application or other design advice, services or information, including, but not limited to, reference designs and materials relating to evaluation modules, (collectively, "TI Resources") are intended to assist designers who are developing applications that incorporate TI products; by downloading, accessing or using any particular TI Resource in any way, you (individually or, if you are acting on behalf of a company, your company) agree to use it solely for this purpose and subject to the terms of this Notice.

TI's provision of TI Resources does not expand or otherwise alter TI's applicable published warranties or warranty disclaimers for TI products, and no additional obligations or liabilities arise from TI providing such TI Resources. TI reserves the right to make corrections, enhancements, improvements and other changes to its TI Resources.

You understand and agree that you remain responsible for using your independent analysis, evaluation and judgment in designing your applications and that you have full and exclusive responsibility to assure the safety of your applications and compliance of your applications (and of all TI products used in or for your applications) with all applicable regulations, laws and other applicable requirements. You represent that, with respect to your applications, you have all the necessary expertise to create and implement safeguards that (1) anticipate dangerous consequences of failures, (2) monitor failures and their consequences, and (3) lessen the likelihood of failures that might cause harm and take appropriate actions. You agree that prior to using or distributing any applications that include TI products, you will thoroughly test such applications and the functionality of such TI products as used in such applications. TI has not conducted any testing other than that specifically described in the published documentation for a particular TI Resource.

You are authorized to use, copy and modify any individual TI Resource only in connection with the development of applications that include the TI product(s) identified in such TI Resource. NO OTHER LICENSE, EXPRESS OR IMPLIED, BY ESTOPPEL OR OTHERWISE TO ANY OTHER TI INTELLECTUAL PROPERTY RIGHT, AND NO LICENSE TO ANY TECHNOLOGY OR INTELLECTUAL PROPERTY RIGHT OF TI OR ANY THIRD PARTY IS GRANTED HEREIN, including but not limited to any patent right, copyright, mask work right, or other intellectual property right relating to any combination, machine, or process in which TI products or services are used. Information regarding or referencing third-party products or services does not constitute a license to use such products or services, or a warranty or endorsement thereof. Use of TI Resources may require a license from a third party under the patents or other intellectual property of the third party, or a license from TI under the patents or other intellectual property of TI.

TI RESOURCES ARE PROVIDED "AS IS" AND WITH ALL FAULTS. TI DISCLAIMS ALL OTHER WARRANTIES OR REPRESENTATIONS, EXPRESS OR IMPLIED, REGARDING TI RESOURCES OR USE THEREOF, INCLUDING BUT NOT LIMITED TO ACCURACY OR COMPLETENESS, TITLE, ANY EPIDEMIC FAILURE WARRANTY AND ANY IMPLIED WARRANTIES OF MERCHANTABILITY, FITNESS FOR A PARTICULAR PURPOSE, AND NON-INFRINGEMENT OF ANY THIRD PARTY INTELLECTUAL PROPERTY RIGHTS.

TI SHALL NOT BE LIABLE FOR AND SHALL NOT DEFEND OR INDEMNIFY YOU AGAINST ANY CLAIM, INCLUDING BUT NOT LIMITED TO ANY INFRINGEMENT CLAIM THAT RELATES TO OR IS BASED ON ANY COMBINATION OF PRODUCTS EVEN IF DESCRIBED IN TI RESOURCES OR OTHERWISE. IN NO EVENT SHALL TI BE LIABLE FOR ANY ACTUAL, DIRECT, SPECIAL, COLLATERAL, INDIRECT, PUNITIVE, INCIDENTAL, CONSEQUENTIAL OR EXEMPLARY DAMAGES IN CONNECTION WITH OR ARISING OUT OF TI RESOURCES OR USE THEREOF, AND REGARDLESS OF WHETHER TI HAS BEEN ADVISED OF THE POSSIBILITY OF SUCH DAMAGES.

You agree to fully indemnify TI and its representatives against any damages, costs, losses, and/or liabilities arising out of your non-compliance with the terms and provisions of this Notice.

This Notice applies to TI Resources. Additional terms apply to the use and purchase of certain types of materials, TI products and services. These include; without limitation, TI's standard terms for semiconductor products (<http://www.ti.com/sc/docs/stdterms.htm>), [evaluation modules](#), and [samples](http://www.ti.com/sc/docs/sampterm.htm) (<http://www.ti.com/sc/docs/sampterm.htm>).

Mailing Address: Texas Instruments, Post Office Box 655303, Dallas, Texas 75265
Copyright © 2017, Texas Instruments Incorporated