

**DS3695,DS3695A,DS3695AT,DS3695T,DS96172,
DS96174,DS96F172MQML,DS96F174MQML**

Application Note 847 FAILSAFE Biasing of Differential Buses



Literature Number: SNLA031

FAILSAFE Biasing of Differential Buses

National Semiconductor
Application Note 847
John Goldie
July 1992



OVERVIEW

Multi-Point bus configurations present two potential problems to the system I/O designer that do not commonly occur in Point-to-Point configurations. The two problems that the I/O system designer should take into account are bus contentions and the idle bus state. Bus contention occurs when more than one driver is active at a time during which the state of the bus is undetermined. Contentions may occur either by software or hardware errors. The second problem is an unknown bus state when all drivers are OFF. FAILSAFE biasing solves this problem by biasing the bus to a known state when ALL drivers are in TRI-STATE®(OFF). This application note is devoted to the topic of FAILSAFE biasing of differential buses.

INTRODUCTION

FAILSAFE biasing provides a known state when all drivers are in TRI-STATE (Hi-Z, OFF). This is especially important in bus configurations that employ more than one driver (transceiver), and is commonly known as a Multi-Point application (see Figure 2).

Electrical Characteristics Standard TIA/EIA-485 specifies that a maximum of 32 unit loads can be connected to a bus. A transceiver (driver/receiver pair) normally represents one unit load (see Figure 2). The bus is a half duplex bi-directional bus, (as data can flow in both directions), but only one driver should be active at a time. Termination is required (in most cases), and is only located at the two extreme ends of the bus. Note, that the termination shown on the left of Figure 1 also provides a FAILSAFE bias.

BUS STATES

A FAILSAFE biased bus has only two states, HIGH (driven HIGH and FAILSAFE HIGH) and LOW (neglecting the transition region, and bus contentions). The bus can be driven HIGH or LOW by an active driver, or biased to a known state by external pull up and pull down resistors. These resistors provide the FAILSAFE bias, and the termination configuration is also known as a "power termination". The two bus states are shown in Figure 2.

In some applications these two states are defined as MARK/SPACE, OFF/ON, or 1/0. The definition of the two states is application dependent. When the signal transitions through the threshold region (± 200 mV) the output state of the receiver is undefined. In Figure 2, the line is driven LOW, transitions HIGH, then the driver is disabled. The bus however, remains HIGH due to external FAILSAFE biasing.

Without FAILSAFE biasing, the receiver output would be undetermined when all drivers are OFF. The line would settle to only 1 mV–5 mV of each other ($V_{OA} - V_{OBI}$, due to the internal input impedance network of the receiver), which is within the receiver's threshold limits (≤ 200 mV). If external noise is coupled onto the line, a false transition could occur, causing an error. In an asynchronous application, this false transition could be interpreted as a framing error, false start bit, or cause a false interrupt.

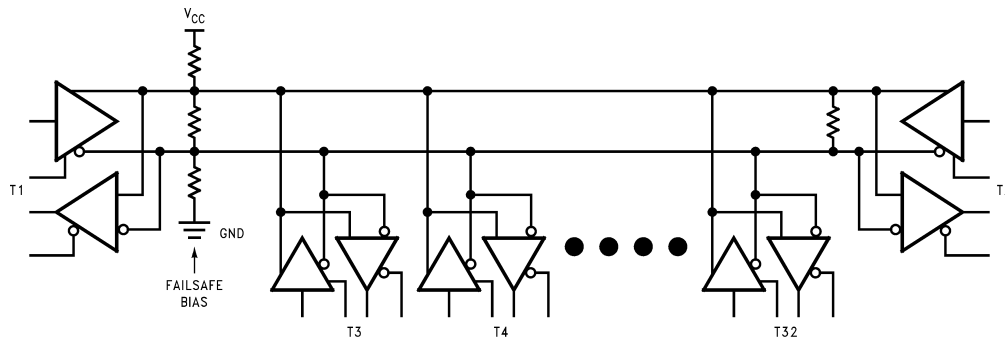
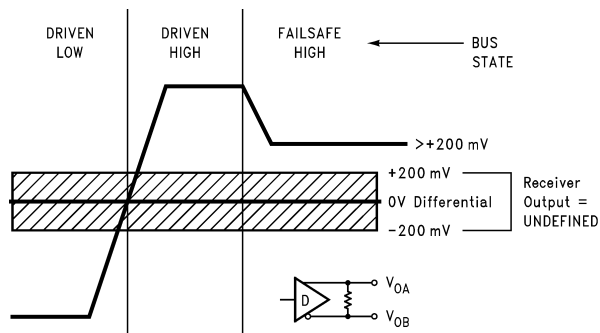


FIGURE 1. Typical Multi-Point Application

AN011497-1

TRI-STATE® is a registered trademark of National Semiconductor Corporation.



AN011497-2

Note: Differential Plot $V_{OA} - V_{OB}$, not with respect to GND.

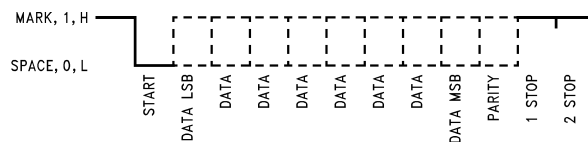
FIGURE 2. Bus States

SERIAL PROTOCOL

A popular format for low speed data transmission is an asynchronous protocol. A typical format is composed of 12 bits. The start bit initiates the timing sequence. This is detected by a transition from HIGH to LOW. Next are eight data bits, followed by an optional parity bit. Lastly, the line is driven HIGH for one or two bits (stop bits), signifying the end of the character. This format is illustrated in Figure 3. If another character is to be sent, the next start bit initiates the whole process all over again. However, if this was the last character, the line should remain HIGH until the next start bit, but the active driver is disabled. This presents a problem in multi-point applications, because between data transmis-

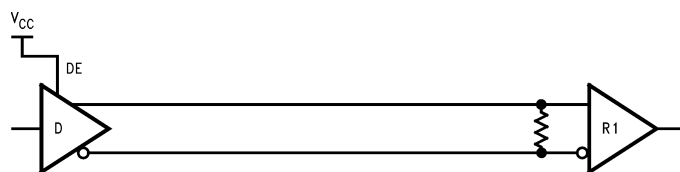
sions all drivers are OFF. With no active drivers, the line is floating, and receiver outputs are undetermined. There are several solutions to this problem. One is through the use of alternate protocols (software), while the other is a hardware fix. The hardware fix uses external resistors to bias the line HIGH, when all drivers are off. The remainder of the application note describes the hardware method and the selection of component values.

In a Point-to-Point application (see Figure 4), the driver is normally always enabled. In this case the bus has only two states, driven HIGH, and driven LOW. FAILSAFE biasing is not needed, unless the driver's enabling pin is also switched.



AN011497-3

FIGURE 3. Asynchronous-UART Timing Format



AN011497-4

FIGURE 4. Typical Point-to-Point Application

CALCULATING RESISTOR VALUES FOR FAILSAFE BIASING

The external resistors are selected such that they provide at least a 200 mV (maximum receiver threshold) bias across the line, and not substantially load down the active driver.

In addition, the following guidelines should be met. The pull up resistor (R_a) and the pull down resistor (R_d) should be of equal value. This provides symmetrical loading for the driver. Termination resistor R_b should be selected such that it matches the characteristic impedance (Z_0) of the twisted pair cable. If the termination resistor matches the line, $R_b = Z_0$, there will be no reflections. At the other end of the cable,

the equivalent resistance of R_c , R_a and R_d should also match the characteristic impedance of the line. In this case R_c is in parallel with R_a plus R_d ($R_c // (R_a + R_d)$). For this equivalent resistance to be matched to the line R_c must be greater than Z_0 . R_c is typically 10Ω – 20Ω greater than Z_0 , but the actual value depends upon the values R_a and R_d . The FAILSAFE bias (V_{fsb}) is the potential dropped across the line. Note that this equation neglects cable resistance (see appendix), and that R_b is in parallel with R_c ($R_{eq} = R_b // R_c$). Therefore, the FAILSAFE bias is simply a voltage divider between R_{eq} , R_a , and R_d . The worst case occurs at $V_{CC} - 5\%$, R_a and $R_d + \%$ tolerance, and R_c and

Rb – % tolerance. Under the worst case conditions the FAILSAFE bias must be greater than 200 mV for the receiver output to be in a guaranteed state.

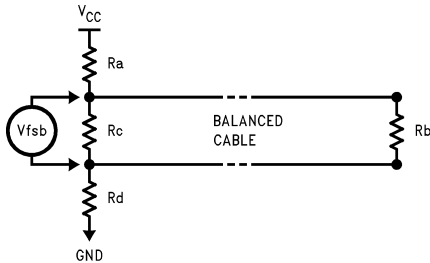


FIGURE 5. External FAILSAFE Bias Resistors

Example calculations for selecting FAILSAFE bias resistors:

Note: For this example assume the cable has a characteristic impedance (Z_0) of 120Ω

Step 1 Assume that Rc and Rb are equal and are selected to match Z_0 .

$$R_c = R_b = Z_0 = 120\Omega$$

Step 2 Calculate the equivalent resistance of Rc//Rb.

$$R_c // R_b = 120\Omega // 120\Omega = 60\Omega$$

Step 3 Calculate the Pull up and Pull down resistor values knowing that the FAILSAFE bias is 200 mV, and $V_{CC} = 5V$.

$$V_{fsb} = V_{CC} (Req / (Ra + Req + Rd))$$

solving for R' (defined as Ra + Rd)

$$R' = ((Req)V_{CC} / V_{fsb}) - Req$$

$$R' = ((60\Omega)5V / 0.2V) - 60\Omega = 1440\Omega$$

Since Ra and Rd are equal, $R_a = R_d = 1440\Omega / 2 = 720\Omega$

Step 4 Recalculate the equivalent resistance of Rc/(Ra + Rd).

$$R_c / (R_a + R_d) = 120\Omega / (720\Omega + 720\Omega) = 110\Omega$$

Since the equivalent resistance is close (within 10%) to the characteristic impedance of the cable (Z_0), no further adjustment of resistor values is required.

However, for the perfectionist, the matched value of Rc can be calculated by setting the following equation to Z_0 and solving for Rc.

$$Z_0 = R_c // (R_a + R_d)$$

$$\therefore R_c = 131\Omega$$

Now the equivalent resistance ($Req = R_c // R_b$) becomes $131\Omega // 120\Omega = 62\Omega$, which is very close to the original 60Ω. Standard value resistors values can be substituted to ease

resistor selection, availability, and cost, before recalculating the FAILSAFE bias potential. Using a 5% tolerance table we find the following standard resistor values:

$$R_a = 750\Omega, R_b = 120\Omega, R_c = 130\Omega, R_d = 750\Omega$$

In order to verify that the selected values meet the criteria the following calculations should be completed:

$$1. R_c / (R_a + R_d) = Z_0$$

$$130\Omega / (750\Omega + 750\Omega) = 120\Omega$$

$$2. Req = R_b // R_c$$

$$120\Omega // 130\Omega = 62\Omega$$

$$3. V_{fsb} = V_{CC} (Req / (Ra + Req + Rd))$$

$$5V(62\Omega / (750\Omega + 62\Omega + 750\Omega)) = 200\text{ mV}$$

Based on the example shown above, and a twisted pair cable with characteristic impedance of 120Ω, it has been determined that a 750Ω pull up and pull down resistor will provide a FAILSAFE bias of 200 mV. This value could be decreased slightly to provide a greater bias (>200 mV), and to meet the worst case power supply and resistor tolerance conditions. However, the value of Ra and Rd should not be reduced too low in order to minimize loading seen by the driver. This example illustrated that the largest values used for the pull up (Ra) and pull down (Rd) resistors should be 750Ω. The pull resistors should not be decreased substantially. Because when the driver is active (ON), it is required to develop a minimum of 1.5V across the cable termination. Using low impedance pull resistors further loads down the driver, making the 1.5V differential voltage even more difficult to meet.

Figure 6 illustrates the fully loaded (32 unit loads) TIA/EIA-485 bus with an external FAILSAFE bias network. Note that the FAILSAFE bias (Power Termination) is only located at one end of the bus. The other end employs a single resistor termination. The power termination is commonly located on the Master node of a Master/Slave bus configuration. This assures that the power to the pull up resistor is always on.

Before looking at the driver's load, the receiver's input impedance needs to be modeled to understand its effect upon the driver. The TIA/EIA-485 standard specifies a high receiver input impedance and an Input Voltage vs Input Current curve. An input impedance of 12 kΩ or greater is typically required to meet the V_{IN}/I_{IN} curve. A common mistake is to model the receiver's input impedance as a differential resistance, which is seen between the input pins. The input resistance is correctly modeled as a series resistor to a voltage reference node (AC ground point). The TIA/EIA-485 standard also allows for 32 unit loads to be connected in parallel. Therefore, the driver could see 32 12 kΩ resistors in parallel on each line. This is equivalent to a 375Ω resistor to an internal voltage reference point.

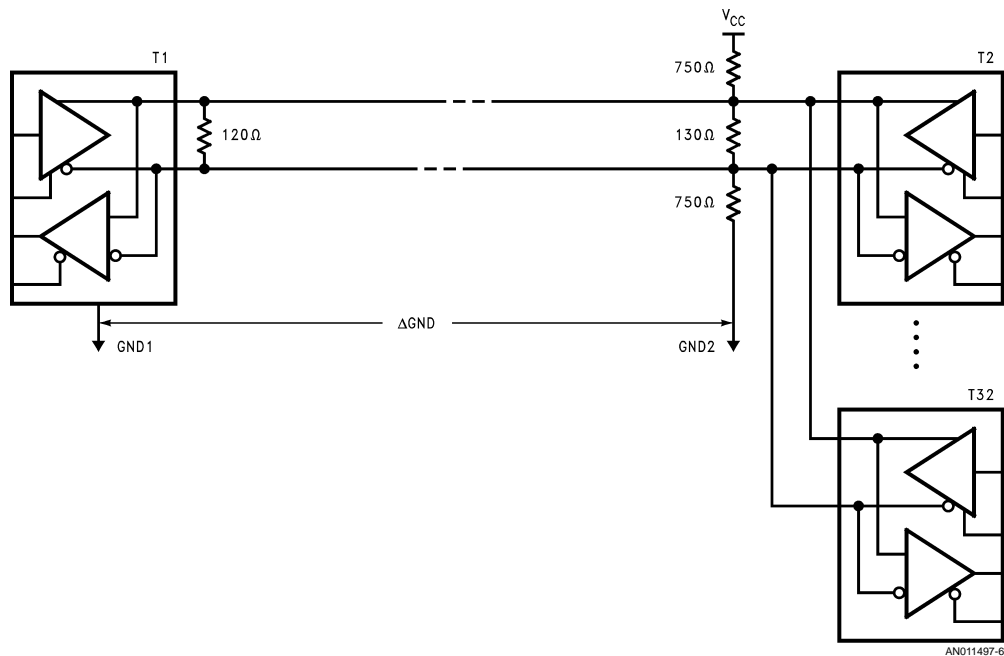


FIGURE 6. Fully Loaded TIA/EIA-485 Bus

The test circuit shown in *Figure 7* models the fully loaded TIA/EIA-485 bus. The 375Ω resistors that model the 32 parallel receiver input impedances, have been changed to 330Ω for two reasons. First, an active driver would also see 31 Tri-stated driver leakage currents (I_{OZ}), which is equivalent to 31 times 100 μA or 3.1 mA. This is equivalent to roughly 3 more unit loads. Therefore, 12 kΩ divided by 35(32 + 3) equals 342Ω. This value is further reduced to 330Ω to select standard value resistors. The dashed box represents 32 receiver loads and 31 passive driver leakage loads. The V_{CM}

power supply models the maximum ground shifting specified (allowed) by TIA/EIA-485 ($\pm 7V$). The differential voltage (VOD), measured across the 62Ω load (120Ω//130Ω), is required to be greater than 1.5V in magnitude by TIA/EIA-485. Test data taken on three popular National TIA/EIA-485 drivers are shown in Table I. With the common mode voltage varied from -7V to +7V, all of the devices meet the 1.5V minimum differential voltage (VOD column).

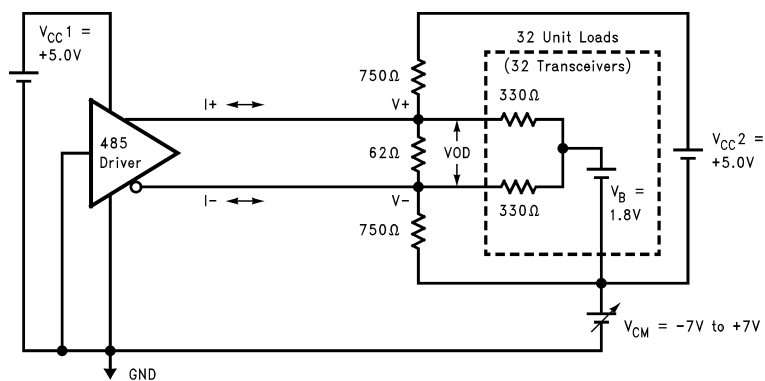


FIGURE 7. Full Load Equivalent Test Circuit

TABLE 1. Test Data for TIA/EIA-485 Drivers

Device	V _{CM} (V)	I ₋ (mA)	I ₊ (mA)	V ₋ (V)	V ₊ (V)	VOD (V)
DS3695	0	-41.7	+38.4	3.39	1.44	1.95
	-7	-56.1	+23.5	3.18	1.24	1.94
	+7	-13.4	+69.1	3.78	1.77	2.01
DS96172/4	0	-43.4	+42.4	3.25	1.14	2.11
	-7	-59.6	+28.0	3.08	0.94	2.14
	+7	-12.0	+70.4	3.47	1.46	2.01
DS96F172/4	0	-49.5	+45.3	3.67	1.33	2.34
	-7	-63.5	+30.6	3.47	1.14	2.33
	+7	-19.2	+74.2	4.00	1.71	2.29

Note 1: Current into device pin is defined as positive, current out of device pin is defined as negative, VOD ≥ 1.5V (TIA/EIA-485).

OPEN INPUT FAILSAFE FEATURE

All of National's TIA/EIA-485 receivers support the *OPEN INPUT FAILSAFE* feature. This feature provides a known state (HIGH) on the receiver output for the following cases, which are illustrated in *Figure 8*. The OPEN INPUT FAILSAFE feature is integrated into the input stage of the device. Normally high value (typically 120 kΩ) bias resistors pull the plus input high, and the minus input low. The value is large enough to properly bias the receiver when the inputs are open (non-terminated).

VALID OPEN INPUT CASES:

- A. **Unterminated Cables**—With restrictions on data rate, stub length, and cable length, it is possible to construct an interface without termination resistors. Normally the cable length is very short with respect to the driver's rise time and the reflections that occur die out long before the next transition. For the idle line, the impedance seen across the receiver input pins is very large (open) and thus the receiver output will be a HIGH state.
- B. **Unconnected Nodes**—In a Multi-Point configuration, up to 32 nodes can be connected to the twisted pair. Termination should only be located at the two extreme ends of the cable. Therefore, if a middle node is disconnected from the cable, the OPEN INPUT FAILSAFE feature will put the receiver output into a stable HIGH state.
- C. **Unused Channels**—If a high integration receiver IC (multi-channel) is being used, and all channels are not re-

quired, the unused channel(s) inputs can be left as no-connects. The OPEN INPUT FAILSAFE feature will force the unused channel into a stable HIGH state. This prevents the unused channel picking up external noise and oscillating, thereby increasing the power supply current (I_{CC}).

In all three cases, the impedance seen across the receiver input pins is very large or open, (∞) in contrast to a low impedance termination resistor of 150Ω or less. For these cases the receiver output will be HIGH. If the termination resistors were connected across the receiver input pins, then the receiver output is undetermined, unless the bus employs FAILSAFE biasing resistors.

SUMMARY

External FAILSAFE bias resistors can be used to solve the idle line state problem that commonly occurs in Multi-Point applications using asynchronous protocols. This is a well accepted hardware approach to solving the idle line state problem. In fact many complete INTERFACE standards have accepted this method. Examples include the Differential SCSI-1 and 2 (Small Computer System Interface) specifications, as well as the IPI (Intelligent Peripheral Interface) standard. This application note provides guidance to selecting proper resistor values that will provide an adequate FAILSAFE bias (V_{fsb}) while minimizing the loading effect on the driver.

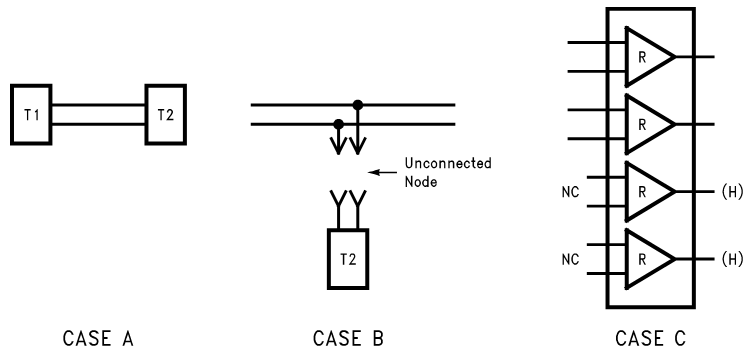


FIGURE 8. Applications of OPEN INPUT FAILSAFE Feature

APPENDIX

A more elaborate calculation that takes into account the DC resistance of the twisted pair cable is provided in this appendix. (See Figure 9). For this example assume the following:

- Ra = Pull Up Resistor
- Rb = Slave End Cable Termination Resistor
- Rc = Master End Cable Termination Resistor
- Rd = Pull Down Resistor
- Re = Cable DC Resistance
- Rf = Cable DC Resistance
- Rdcr = Re + Rf
- Vfsbm = FAILSAFE Bias Potential @ Master end of cable
- Vfsbs = FAILSAFE Bias Potential @ Slave end of cable

and

- 1. Ra = Rd for symmetrical loading
- 1. REQ = Rc/(Ra + Rd)
- REQ = (Rc(Ra + Rd))/(Ra + Rc + Rd).

- Note 2:** Assume V_{CC} = 5V ± 5%.
- Note 3:** Resistor Tolerance = ±2%.
- Note 4:** Worst Case occurs at V_{CC} - 5%, Ra and Rd + 2%, Rb and Rc - 2%.

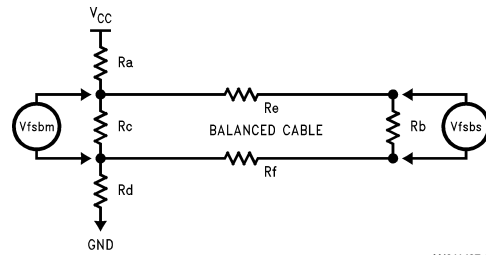


FIGURE 9. A-1. Cable Model

AN011497-9

Equations:

FAILSAFE Bias at the Master end of the cable is:

$$V_{fsbm} = \frac{R_c // (R_b + R_{dcr})}{R_a + R_d + (R_c // (R_b + R_{dcr}))} V_{CC}$$

$$V_{fsbm} = \frac{R_c(R_b + R_{dcr})}{(R_a + R_d)(R_c + R_b + R_{dcr}) + R_c(R_b + R_{dcr})} V_{CC}$$

The FAILSAFE Bias at the Slave end is simply a voltage divider between the cable DC resistance and the Slave end termination resistor.

$$V_{fsbs} = \frac{R_b}{R_b + R_{dcr}} V_{fsbm}$$

REFERENCES

1. EIA Standard EIA RS-485, Standard for Electrical Characteristics of Generators and Receivers, for use in a Balanced Digital Multipoint Systems, EIA, Washington, D.C., 1983.
2. EIA Standard EIA RS-422-A, Electrical Characteristics of Balanced Voltage Digital Interface Circuits, EIA, Washington, D.C., 1978.
3. FAILSAFE Lab Notes, Gary Murdock, National Semiconductor, 1987.

LIFE SUPPORT POLICY

NATIONAL'S PRODUCTS ARE NOT AUTHORIZED FOR USE AS CRITICAL COMPONENTS IN LIFE SUPPORT DEVICES OR SYSTEMS WITHOUT THE EXPRESS WRITTEN APPROVAL OF THE PRESIDENT OF NATIONAL SEMICONDUCTOR CORPORATION. As used herein:

1. Life support devices or systems are devices or systems which, (a) are intended for surgical implant into the body, or (b) support or sustain life, and whose failure to perform when properly used in accordance with instructions for use provided in the labeling, can be reasonably expected to result in a significant injury to the user.
2. A critical component in any component of a life support device or system whose failure to perform can be reasonably expected to cause the failure of the life support device or system, or to affect its safety or effectiveness.



National Semiconductor Corporation
Americas
Tel: 1-800-272-9959
Fax: 1-800-737-7018
Email: support@nsc.com

National Semiconductor Europe
Fax: +49 (0) 1 80-530 85 86
Email: europe.support@nsc.com
Deutsch Tel: +49 (0) 1 80-530 85 85
English Tel: +49 (0) 1 80-532 78 32
Français Tel: +49 (0) 1 80-532 93 58
Italiano Tel: +49 (0) 1 80-534 16 80

National Semiconductor Asia Pacific Customer Response Group
Tel: 65-2544466
Fax: 65-2504466
Email: sea.support@nsc.com

National Semiconductor Japan Ltd.
Tel: 81-3-5620-6175
Fax: 81-3-5620-6179

www.national.com

IMPORTANT NOTICE

Texas Instruments Incorporated and its subsidiaries (TI) reserve the right to make corrections, modifications, enhancements, improvements, and other changes to its products and services at any time and to discontinue any product or service without notice. Customers should obtain the latest relevant information before placing orders and should verify that such information is current and complete. All products are sold subject to TI's terms and conditions of sale supplied at the time of order acknowledgment.

TI warrants performance of its hardware products to the specifications applicable at the time of sale in accordance with TI's standard warranty. Testing and other quality control techniques are used to the extent TI deems necessary to support this warranty. Except where mandated by government requirements, testing of all parameters of each product is not necessarily performed.

TI assumes no liability for applications assistance or customer product design. Customers are responsible for their products and applications using TI components. To minimize the risks associated with customer products and applications, customers should provide adequate design and operating safeguards.

TI does not warrant or represent that any license, either express or implied, is granted under any TI patent right, copyright, mask work right, or other TI intellectual property right relating to any combination, machine, or process in which TI products or services are used. Information published by TI regarding third-party products or services does not constitute a license from TI to use such products or services or a warranty or endorsement thereof. Use of such information may require a license from a third party under the patents or other intellectual property of the third party, or a license from TI under the patents or other intellectual property of TI.

Reproduction of TI information in TI data books or data sheets is permissible only if reproduction is without alteration and is accompanied by all associated warranties, conditions, limitations, and notices. Reproduction of this information with alteration is an unfair and deceptive business practice. TI is not responsible or liable for such altered documentation. Information of third parties may be subject to additional restrictions.

Resale of TI products or services with statements different from or beyond the parameters stated by TI for that product or service voids all express and any implied warranties for the associated TI product or service and is an unfair and deceptive business practice. TI is not responsible or liable for any such statements.

TI products are not authorized for use in safety-critical applications (such as life support) where a failure of the TI product would reasonably be expected to cause severe personal injury or death, unless officers of the parties have executed an agreement specifically governing such use. Buyers represent that they have all necessary expertise in the safety and regulatory ramifications of their applications, and acknowledge and agree that they are solely responsible for all legal, regulatory and safety-related requirements concerning their products and any use of TI products in such safety-critical applications, notwithstanding any applications-related information or support that may be provided by TI. Further, Buyers must fully indemnify TI and its representatives against any damages arising out of the use of TI products in such safety-critical applications.

TI products are neither designed nor intended for use in military/aerospace applications or environments unless the TI products are specifically designated by TI as military-grade or "enhanced plastic." Only products designated by TI as military-grade meet military specifications. Buyers acknowledge and agree that any such use of TI products which TI has not designated as military-grade is solely at the Buyer's risk, and that they are solely responsible for compliance with all legal and regulatory requirements in connection with such use.

TI products are neither designed nor intended for use in automotive applications or environments unless the specific TI products are designated by TI as compliant with ISO/TS 16949 requirements. Buyers acknowledge and agree that, if they use any non-designated products in automotive applications, TI will not be responsible for any failure to meet such requirements.

Following are URLs where you can obtain information on other Texas Instruments products and application solutions:

Products

Audio	www.ti.com/audio
Amplifiers	amplifier.ti.com
Data Converters	dataconverter.ti.com
DLP® Products	www.dlp.com
DSP	dsp.ti.com
Clocks and Timers	www.ti.com/clocks
Interface	interface.ti.com
Logic	logic.ti.com
Power Mgmt	power.ti.com
Microcontrollers	microcontroller.ti.com
RFID	www.ti-rfid.com
OMAP Mobile Processors	www.ti.com/omap
Wireless Connectivity	www.ti.com/wirelessconnectivity

Applications

Communications and Telecom	www.ti.com/communications
Computers and Peripherals	www.ti.com/computers
Consumer Electronics	www.ti.com/consumer-apps
Energy and Lighting	www.ti.com/energy
Industrial	www.ti.com/industrial
Medical	www.ti.com/medical
Security	www.ti.com/security
Space, Avionics and Defense	www.ti.com/space-avionics-defense
Transportation and Automotive	www.ti.com/automotive
Video and Imaging	www.ti.com/video

TI E2E Community Home Page

e2e.ti.com

Mailing Address: Texas Instruments, Post Office Box 655303, Dallas, Texas 75265
Copyright © 2011, Texas Instruments Incorporated