

# Programming the HDC20X0 Devices

## ABSTRACT

The purpose of this document is to familiarize the user with the HDC20X0 devices by providing programming configuration examples, and pseudo code. The HDC devices are integrated humidity and temperature sensors that provide excellent measurement accuracy (RH accuracy typ. 2% RH, Temperature accuracy typ. 0.2°C) with very low power consumption. The device measures humidity through a capacitive polymer dielectric. This sensing element is placed on the bottom of the HDC2010, and the top of the HDC2080 device. The HDC2010 features a WLCSP (Wafer Level Chip Scale Package), while the HDC2080 features a WSON package. The humidity and temperature sensors are factory calibrated with calibration data stored in its internal non-volatile memory.

## Contents

1	Device Functional Modes .....	2
2	Single Acquisition .....	2
3	Continuous Acquisition .....	4
4	Interrupt Pin Functionality.....	5
5	Understanding The Output Data .....	6
6	Conclusion .....	7
7	Appendix A .....	8

## List of Figures

1	Single Acquisition Configuration .....	3
2	Continuous Acquisition Mode: TIMER BASED .....	4
3	Continuous Acquisition Mode: INTERRUPT BASED .....	5

## List of Tables

1	Output Registers .....	8
2	Address 0x00 Temperature LSB Register.....	8
3	Address 0x00 Temperature LSB Field Descriptions .....	8
4	Address 0x01 Temperature MSB Register .....	8
5	Address 0x01 Temperature MSB Field Descriptions .....	8
6	Address 0x02 Humidity LSB Register.....	8
7	Address 0x02 Humidity LSB Field Descriptions .....	8
8	Address 0x03 Humidity MSB Register .....	9
9	Address 0x03 Temperature MSB Field Descriptions .....	9
10	Configuration Registers .....	9
11	Address 0x0E Reset and DRDY/INT Configuration Register .....	9
12	Address 0x0E Reset and DRDY/INT Configuration Field Descriptions .....	9
13	Address 0x0F Measurement Configuration Register .....	10
14	Address 0x0F Measurement Configuration Field Descriptions.....	10

## Trademarks

All trademarks are the property of their respective owners.

## 1 Device Functional Modes

The HDC20X0 has two modes of operation: sleep and measurement mode. After power up, the HDC20X0 enters sleep mode. In this mode, the HDC20X0 waits for I2C instruction to set programmable conversion times, trigger a measurement/conversion, or read/write valid data. When a measurement is triggered, the HDC20X0 wakes from sleep mode to enter measurement mode. In measurement mode, the HDC20X0 converts temperature or humidity values from integrated sensors through an internal ADC and stores the information in their respective data registers [0x00 - 0x03]. The DRDY/INT pin can be monitored to verify if data is ready after measurement conversion. The DRDY/INT pin polarity and interrupt mode is set according to the configuration of the Interrupt Enable and DRDY/INT Configuration registers. After completing the conversion, the HDC20X0 returns to sleep mode.

Two different types of ADC conversions (measurement modes) are available in the HDC devices: Trigger on Demand and Auto Mode.

In Trigger on Demand mode an I2C command triggers the measurement conversion. After the measurement is converted, the device remains in sleep mode until a new trigger is written.

Auto Mode is a continuous operation, adjusting the RESET and DRDY/INT Configuration Register enables the user to select from 7 different conversion frequencies (from 5Hz to 1/120Hz). In auto mode, the HDC20X0 wakes from sleep to measurement mode based on the selected sample rate.

## 2 Single Acquisition

### 2.1 Startup Sequence

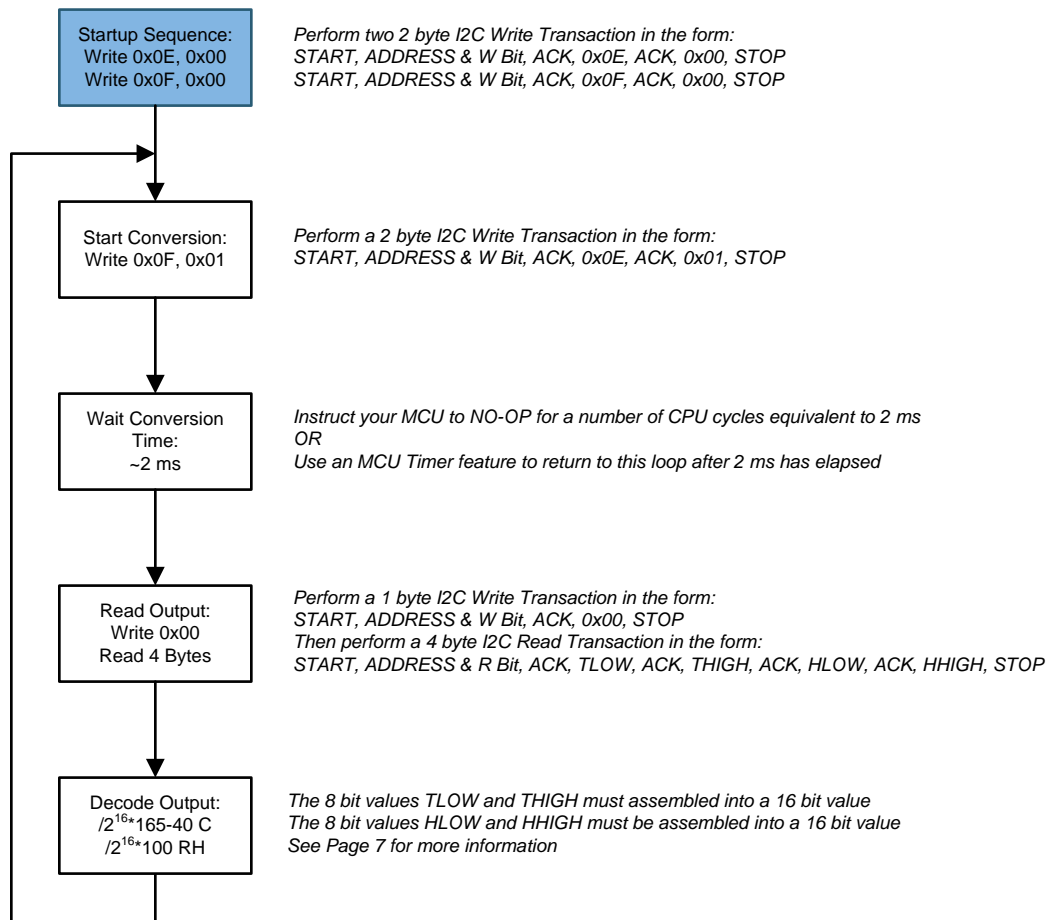
After power up, the HDC20X0 is in sleep mode waiting for I2C input commands. To configure the device to collect both the humidity and temperature data in single acquisition mode, select TRIGGER ON DEMAND in CONFIG register (0x0E), select the desired Temperature and Humidity resolutions and the Temperature + Humidity measurement configuration in MEASUR\_CONFIG register (0x0F).

### 2.2 Reading Procedure

To initiate a single measurement, the bit MEAS\_TRIG is set to '1' in the MEASUR\_CONFIG register. The device will exit from sleep mode and perform a single measurement. After the conversion, the device will update the respective measurement register and will return to sleep mode. The register can be accessed through a pointer mechanism. When reading from the HDC20X0, the current pointer location is used to determine which register to read -- the pointer location points to the last written register address. To change the address for a read operation, a new value must be written to the pointer. This transaction is accomplished by issuing the slave address byte with the R/W bit set to '0', followed by the pointer byte.

The pointer auto increments, therefore it is possible to read all 4 bytes of information related to Temperature and humidity in a single transaction, this is shown in [Figure 1](#):

### 2.3 Example Flowchart For A Single Acquisition Configuration



**Figure 1. Single Acquisition Configuration**

### 3 Continuous Acquisition

#### 3.1 Startup Sequence

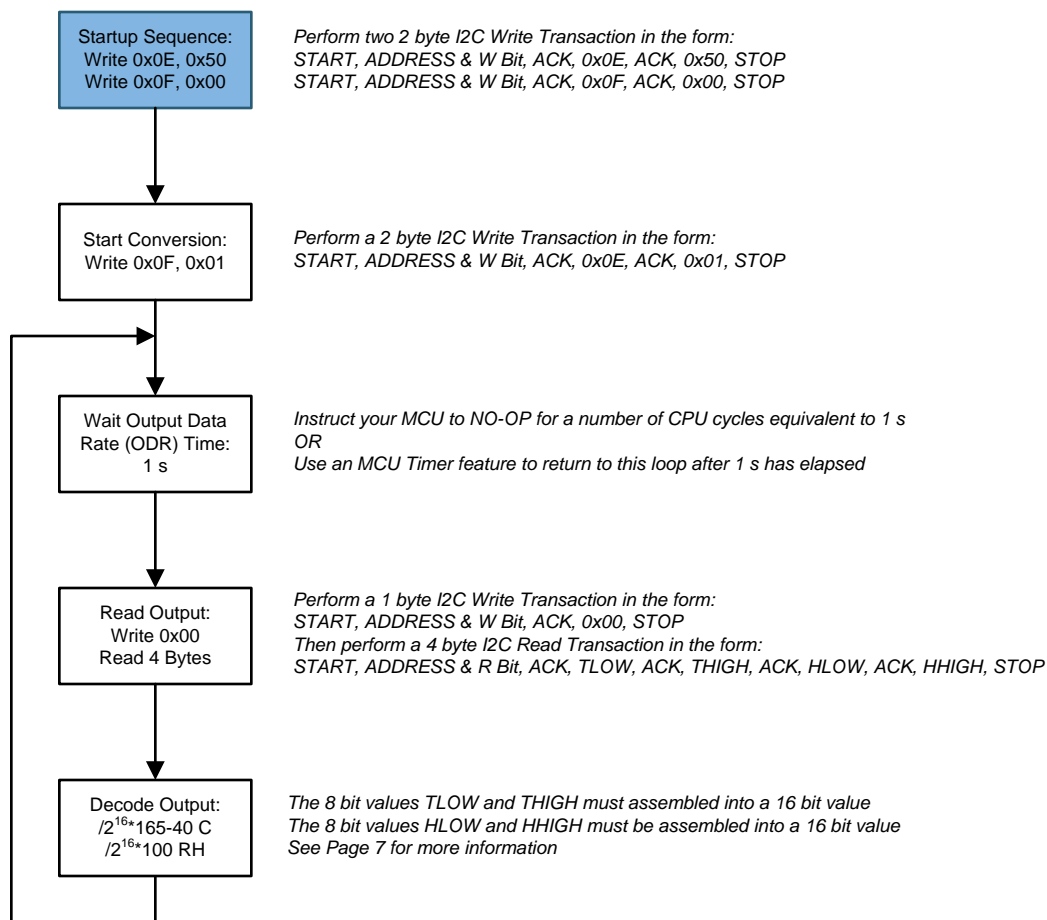
After power up, the HDC20X0 is in sleep mode waiting for I2C input commands. To configure the device to collect both the humidity and temperature data in continuous mode, select the desired Auto Measurement Mode (AMM) in CONFIG register (0x0E), and select the Temperature and Humidity resolutions and the Temperature + Humidity measurement configuration in MEASUR\_CONFIG register (0x0F).

#### 3.2 Reading Procedure

To trigger the start of the measurements, the bit MEAS\_TRIG is set to '1' in MEASUR\_CONFIG register (0x0F). The device will exit from sleep mode and will start to periodically convert the measurements based on the selected sample rate in the CONFIG register (0x0E). After each conversion, the device will update the measurement related registers and re-enter sleep mode. The register can be accessed through a pointer mechanism. When reading from the HDC20X0, the current pointer location is used to determine which register to read -- the pointer location points to the last written register address. To change the address for a read operation, a new value must be written to the pointer. This transaction is accomplished by issuing the slave address byte with the R/W bit set to '0', followed by the pointer byte.

The pointer auto increments, therefore it is possible to read all 4 bytes of information related to Temperature and humidity in a single transaction, this is shown in [Figure 2](#) and [Figure 3](#):

#### 3.3 Example Flowchart For Continuous Acquisition Mode: TIMER BASED



**Figure 2. Continuous Acquisition Mode: TIMER BASED**

### 3.4 Example Flowchart For Continuous Acquisition Mode: INTERRUPT BASED

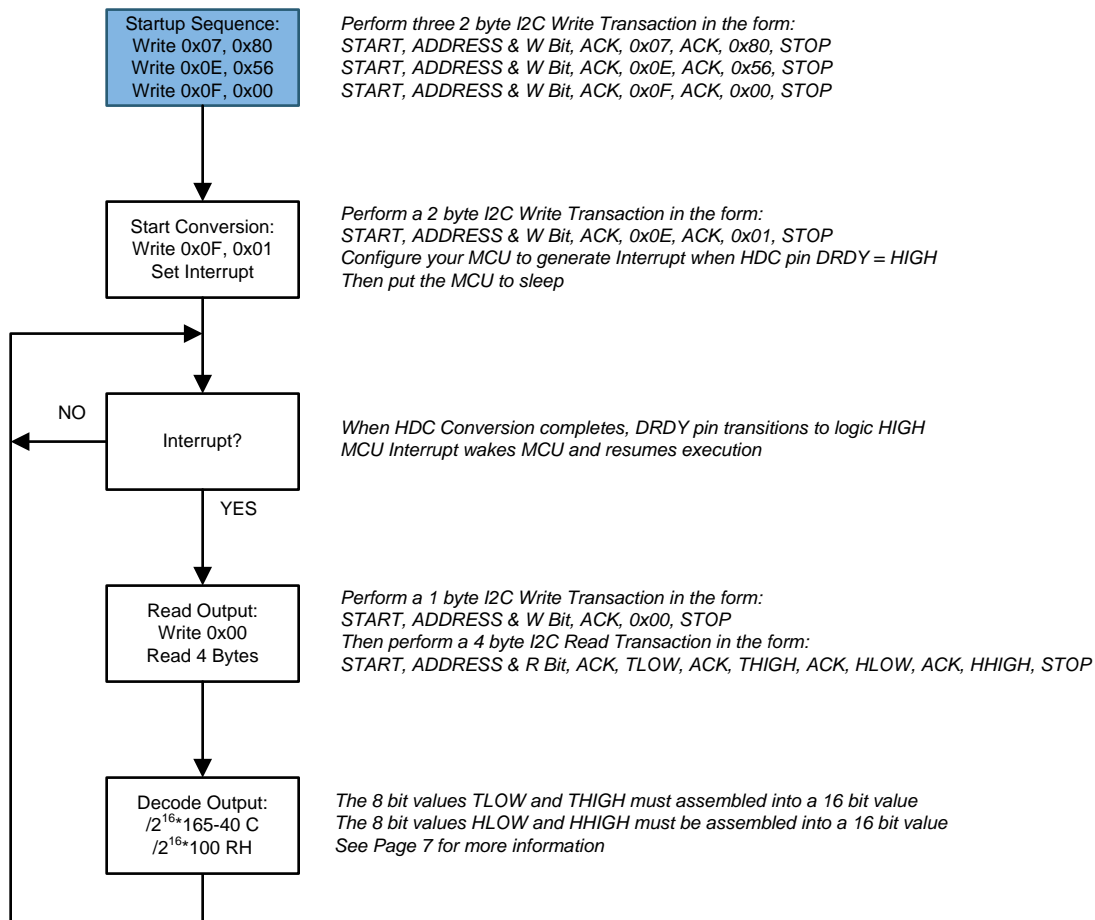


Figure 3. Continuous Acquisition Mode: INTERRUPT BASED

## 4 Interrupt Pin Functionality

Interrupt pin functionality is shared between Data Ready and Event Interrupt functionality. Enabling the interrupt pin for Data Ready (DRDY) can help reduce the power consumption of the system as the MCU/CPU will enter sleep when the HDC device is making temperature and humidity measurements, and awaken the MCU/CPU for communication through its DRDY interrupt pin. To verify that data is ready after manual conversion, the DRDY/INT pin should be monitored. If monitoring this pin is not possible, it is recommended that the user program the device for auto mode and program the sampling rate of the device to perform periodic automatic conversions.

Additionally, the DRDY/INT pin can be set for interrupt capability based on input alarm thresholds for either temperature or humidity measurements.

## 5 Understanding The Output Data

The measured temperature and humidity data are sent to the output register: TEMP\_LOW, TEMP\_HIGH, RH\_LOW and RH\_HIGH. Temperature data are represented as 16-bit numbers, so the complete values are given by the concatenation of the low and high register:

$$\text{TEMPERATURE}_{\text{LSB}} = \text{TEMP\_HIGH} \ll 8 + \text{TEMP\_LOW};$$

$$\text{HUMIDITY}_{\text{LSB}} = \text{RH\_HIGH} \ll 8 + \text{RH\_LOW};$$

### Convert the output value

$$\text{TEMPERATURE}(\text{°C}) = \left( \frac{\text{TEMPERATURE}_{\text{LSB}}}{2^{16}} \right) \times 165 - 40$$

$$\text{HUMIDITY}(\% \text{RH}) = \left( \frac{\text{HUMIDITY}_{\text{LSB}}}{2^{16}} \right) \times 100$$

### Temperature Calculation Example:

1. Output registers:

$$\text{TEMP\_LOW} = 0x5E;$$

$$\text{TEMP\_HIGH} = 0x64;$$

Temperature value in hex:

$$\text{TEMPERATURE}_{\text{LSB}} = 0x645E$$

Temperature value in decimal:

$$\text{TEMPERATURE}_{\text{LSB}} = 25694$$

Temperature value in degree C:

$$\text{TEMPERATURE}(\text{°C}) = \left( \frac{25694}{2^{16}} \right) \times 165 - 40 = 24.67\text{°C}$$

2. Output registers:

$$\text{TEMP\_LOW} = 0x3B;$$

$$\text{TEMP\_HIGH} = 0x29;$$

Temperature value in hex:

$$\text{TEMPERATURE}_{\text{LSB}} = 0x293B$$

Temperature value in decimal:

$$\text{TEMPERATURE}_{\text{LSB}} = 10555$$

Temperature value in degree C:

$$\text{TEMPERATURE}(\text{°C}) = \left( \frac{10555}{2^{16}} \right) \times 165 - 40 = 13.43\text{°C}$$

### Humidity Calculation Example:

Output registers:

$$\text{RH\_LOW} = 0xDC;$$

$$\text{RH\_HIGH} = 0x42;$$

Temperature value in hex:

$$\text{HUMIDITY}_{\text{LSB}} = 0x42DC$$

Temperature value in decimal:

$$\text{HUMIDITY}_{\text{LSB}} = 17116$$

Temperature value in degree C:

$$\text{HUMIDITY}(\% \text{RH}) = \left( \frac{17116}{2^{16}} \right) \times 100 = 26.11\% \text{RH}$$

## **6 Conclusion**

In this application note, configuration examples and pseudo code were presented to familiarize the user with the different configuration options of the HDC20X0 family of devices.

The following different acquisition modes and Interrupt capability have been discussed:

1. Trigger on Demand to generate a single acquisition.
2. Auto mode to perform continuous acquisitions
3. INTERRUPT based functionality for DRDY/INT pin

Mathematical conversion of digital code to respective temperature and humidity readings have also been included for reference.

## 7 Appendix A

**Table 1. Output Registers**

Register Name	Address	Bit7	Bit6	Bit5	Bit4	Bit3	Bit2	Bit1	Bit0
TEMP_LO W	0x00	TEMP7	TEMP6	TEMP5	TEMP4	TEMP3	TEMP2	Reserved	Reserved
TEMP_HI H	0x01	TEMP15	TEMP14	TEMP13	TEMP12	TEMP11	TEMP10	TEMP9	TEMP8
RH_LOW	0x02	RH7	RH6	RH5	RH4	RH3	RH2	Reserved	Reserved
RH_HIGH	0x03	RH15	RH14	RH13	RH12	RH11	RH10	RH9	RH8

### 7.1 Address 0x00 Temperature LSB

**Table 2. Address 0x00 Temperature LSB Register**

7	6	5	4	3	2	1	0
TEMP[7:0]							

**Table 3. Address 0x00 Temperature LSB Field Descriptions**

BIT	FIELD	TYPE	RESET	DESCRIPTION
[7:0]	TEMPERATURE [7:0]	R	00000000	Temperature LSB

### 7.2 Address 0x01 Temperature MSB

**Table 4. Address 0x01 Temperature MSB Register**

7	6	5	4	3	2	1	0
TEMP[15:8]							

**Table 5. Address 0x01 Temperature MSB Field Descriptions**

BIT	FIELD	TYPE	RESET	DESCRIPTION
[15:8]	TEMPERATURE [15:8]	R	00000000	Temperature MSB

The temperature register is a 16-bit result register in binary format (the 2 LSBs D1 and D0 are reserved bits, and must be set to '0' in formula). The result of the acquisition is always a 14 bit value, while the resolution is related to one selected in Measurement Configuration register. The temperature can be calculated from the output data with:

$$\text{TEMPERATURE} (^{\circ}\text{C}) = \left( \frac{\text{TEMPERATURE}[15:0]}{2^{16}} \right) \times 165 - 40 \quad (1)$$

### 7.3 Address 0x02 Humidity LSB

**Table 6. Address 0x02 Humidity LSB Register**

7	6	5	4	3	2	1	0
HUMIDITY[7:0]							

**Table 7. Address 0x02 Humidity LSB Field Descriptions**

BIT	FIELD	TYPE	RESET	DESCRIPTION
[7:0]	HUMIDITY [7:0]	R	00000000	Humidity LSB



## 7.4 Address 0x03 Humidity MSB

**Table 8. Address 0x03 Humidity MSB Register**

7	6	5	4	3	2	1	0
HUMIDITY[15:8]							

**Table 9. Address 0x03 Temperature MSB Field Descriptions**

BIT	FIELD	TYPE	RESET	DESCRIPTION
[15:8]	HUMIDITY[15:8]	R	00000000	Humidity MSB

The humidity register is a 16-bit result register in binary format (the 2 LSBs D1 and D0 are reserved bits, and must be set to '0' in formula). The result of the acquisition is always a 14 bit value, while the resolution is related to one selected in Measurement Configuration register. The humidity can be calculated from the output data with:

$$\text{HUMIDITY}(\%RH) = \left( \frac{\text{HUMIDITY}[15:0]}{2^{16}} \right) \times 100 \quad (2)$$

## 7.5 Configuration Registers

**Table 10. Configuration Registers**

Register Name	Address	Bit7	Bit6	Bit5	Bit4	Bit3	Bit2	Bit1	Bit0
CONFIG	0x0E	SOFT_RE S	AMM2	AMM1	AMM0	HEAT_EN	DRDY/INT _EN	INT_POL	INT_MODE
MEASUR CONFIG	0x0F	TRES1	TRES0	HRES1	HRES1	RES	MEAS_CO NFIG1	MEAS_CO NFIG0	MEAS_TRI G

## 7.6 Address 0x0E Reset and DRDY/INT Configuration Register

**Table 11. Address 0x0E Reset and DRDY/INT Configuration Register**

7	6	5	4	3	2	1	0
SOFT_RES	AMM[2]	AMM[1]	AMM[0]	HEAT_EN	DRDY/INT_EN	INT_POL	INT_MODE

**Table 12. Address 0x0E Reset and DRDY/INT Configuration Field Descriptions**

BIT	FIELD	TYPE	RESET	DESCRIPTION
7	SOFT_RES	R/W	0	0 = Normal Operation mode, this bit is self-clearing 1 = Soft Reset EEPROM value reload and registers reset
[6:4]	AMM[2:0]	R/W	000	Auto Measurement Mode (AMM) 000 = AMM disabled. Trigger on demand. 001 = 1/120Hz (1 samples every 2 minutes) 010 = 1/60Hz (1 samples every minute) 011 = 0.1Hz (1 samples every 10 seconds) 100 = 0.2 Hz (1 samples every 5 second) 101 = 1Hz (1 samples every second) 110 = 2Hz (2 samples every second) 111 = 5Hz (5 samples every second)
3	HEAT_EN	R/W	0	0 = Heater off 1 = Heater on
2	DRDY/INT_EN	R/W	0	DRDY/INT_EN pin configuration 0 = High Z 1 = Enable

**Table 12. Address 0x0E Reset and DRDY/INT Configuration Field Descriptions (continued)**

BIT	FIELD	TYPE	RESET	DESCRIPTION
1	INT_POL	R/W	0	Interrupt polarity 0 = Active Low 1 = Active High
0	INT_MODE		0	Interrupt mode 0 = Level sensitive 1 = Comparator mode

## 7.7 Address 0x0F Measurement Configuration

**Table 13. Address 0x0F Measurement Configuration Register**

7	6	5	4	3	2	1	0
TRES[1]	TRES[0]	HRES[1]	HRES[0]	RES	MEAS_CONF[1 ]	MEAS_CONF[0 ]	MEAS_TRIG

**Table 14. Address 0x0F Measurement Configuration Field Descriptions**

BIT	FIELD	TYPE	RESET	DESCRIPTION
7:6	TRES[1:0]	R/W	00	Temperature resolution 00: 14 bit 01: 11 bit 10: 8 bit 11: NA
5:4	HRES[1:0]	R/W	00	Humidity resolution 00: 14 bit 01: 11 bit 10: 8 bit 11: NA
3	RES	R/W	0	Reserved
2:1	MEAS_CONF[1:0]	R/W	00	Measurement configuration 00: Humidity + Temperature 01: Temperature only 10: Humidity Only 11: NA
0	MEAS_TRIG	R/W	0	Measurement trigger 0: no action 1: Start measurement Self-cleaning bit when measurement completed

## IMPORTANT NOTICE FOR TI DESIGN INFORMATION AND RESOURCES

Texas Instruments Incorporated ("TI") technical, application or other design advice, services or information, including, but not limited to, reference designs and materials relating to evaluation modules, (collectively, "TI Resources") are intended to assist designers who are developing applications that incorporate TI products; by downloading, accessing or using any particular TI Resource in any way, you (individually or, if you are acting on behalf of a company, your company) agree to use it solely for this purpose and subject to the terms of this Notice.

TI's provision of TI Resources does not expand or otherwise alter TI's applicable published warranties or warranty disclaimers for TI products, and no additional obligations or liabilities arise from TI providing such TI Resources. TI reserves the right to make corrections, enhancements, improvements and other changes to its TI Resources.

You understand and agree that you remain responsible for using your independent analysis, evaluation and judgment in designing your applications and that you have full and exclusive responsibility to assure the safety of your applications and compliance of your applications (and of all TI products used in or for your applications) with all applicable regulations, laws and other applicable requirements. You represent that, with respect to your applications, you have all the necessary expertise to create and implement safeguards that (1) anticipate dangerous consequences of failures, (2) monitor failures and their consequences, and (3) lessen the likelihood of failures that might cause harm and take appropriate actions. You agree that prior to using or distributing any applications that include TI products, you will thoroughly test such applications and the functionality of such TI products as used in such applications. TI has not conducted any testing other than that specifically described in the published documentation for a particular TI Resource.

You are authorized to use, copy and modify any individual TI Resource only in connection with the development of applications that include the TI product(s) identified in such TI Resource. NO OTHER LICENSE, EXPRESS OR IMPLIED, BY ESTOPPEL OR OTHERWISE TO ANY OTHER TI INTELLECTUAL PROPERTY RIGHT, AND NO LICENSE TO ANY TECHNOLOGY OR INTELLECTUAL PROPERTY RIGHT OF TI OR ANY THIRD PARTY IS GRANTED HEREIN, including but not limited to any patent right, copyright, mask work right, or other intellectual property right relating to any combination, machine, or process in which TI products or services are used. Information regarding or referencing third-party products or services does not constitute a license to use such products or services, or a warranty or endorsement thereof. Use of TI Resources may require a license from a third party under the patents or other intellectual property of the third party, or a license from TI under the patents or other intellectual property of TI.

TI RESOURCES ARE PROVIDED "AS IS" AND WITH ALL FAULTS. TI DISCLAIMS ALL OTHER WARRANTIES OR REPRESENTATIONS, EXPRESS OR IMPLIED, REGARDING TI RESOURCES OR USE THEREOF, INCLUDING BUT NOT LIMITED TO ACCURACY OR COMPLETENESS, TITLE, ANY EPIDEMIC FAILURE WARRANTY AND ANY IMPLIED WARRANTIES OF MERCHANTABILITY, FITNESS FOR A PARTICULAR PURPOSE, AND NON-INFRINGEMENT OF ANY THIRD PARTY INTELLECTUAL PROPERTY RIGHTS.

TI SHALL NOT BE LIABLE FOR AND SHALL NOT DEFEND OR INDEMNIFY YOU AGAINST ANY CLAIM, INCLUDING BUT NOT LIMITED TO ANY INFRINGEMENT CLAIM THAT RELATES TO OR IS BASED ON ANY COMBINATION OF PRODUCTS EVEN IF DESCRIBED IN TI RESOURCES OR OTHERWISE. IN NO EVENT SHALL TI BE LIABLE FOR ANY ACTUAL, DIRECT, SPECIAL, COLLATERAL, INDIRECT, PUNITIVE, INCIDENTAL, CONSEQUENTIAL OR EXEMPLARY DAMAGES IN CONNECTION WITH OR ARISING OUT OF TI RESOURCES OR USE THEREOF, AND REGARDLESS OF WHETHER TI HAS BEEN ADVISED OF THE POSSIBILITY OF SUCH DAMAGES.

You agree to fully indemnify TI and its representatives against any damages, costs, losses, and/or liabilities arising out of your non-compliance with the terms and provisions of this Notice.

This Notice applies to TI Resources. Additional terms apply to the use and purchase of certain types of materials, TI products and services. These include; without limitation, TI's standard terms for semiconductor products (<http://www.ti.com/sc/docs/stdterms.htm>), [evaluation modules](#), and [samples](http://www.ti.com/sc/docs/sampterm.htm) (<http://www.ti.com/sc/docs/sampterm.htm>).

Mailing Address: Texas Instruments, Post Office Box 655303, Dallas, Texas 75265  
Copyright © 2018, Texas Instruments Incorporated