

# Current Mode Control in Switching Power Supplies



Most switching power supplies are designed with closed-loop feedback circuitry to provide stable power under various transient and load conditions. The feedback methodology options fall into two general categories, voltage mode control (VMC) and current mode control (CMC). Both methodologies have their strengths and weakness that determine the appropriate selection for the end-equipment application.

## Control Methodologies

Voltage mode control utilizes a scaled value of the output voltage as the feedback signal. This methodology provides simple, straight-forward feedback architecture for the control path. However, this method has several disadvantages that should be noted. The most significant disadvantage is output voltage regulation requires sensing a change in output voltage and propagation through the entire feedback signal and filter before the output is appropriately compensated. This can generate a unacceptably slow response for systems that desire high levels of regulation. The feedback compensation of the supply requires a higher level of analysis to address the two poles introduced by the output low-pass filter. Additionally, the feedback component values must be adjusted since different input voltages affect the overall loop gain.

Current mode control addresses the above short-falls of voltage mode control by using the inductor current waveform for control. This signal is included with the output voltage feedback loop as a second, fast response control loop. The additional feedback loop does potentially increase the circuit/feedback complexity, so the advantages need to be evaluated as part of the design requirements.

By using the inductor current as part of the feedback control:

1. The added current feedback loop responds faster compared with only using the output voltage for feedback control. Additionally, with the inductor current information, the circuit can be designed to provide pulse by pulse current limiting allowing rapid detection and control for current limiting needs.

2. The power supply looks like a voltage controlled current source. This permits a modular supply design to allow load sharing between multiple supplies in a parallel configuration.
3. The effects of the inductor in the control loop can be minimized since the current feedback loop effectively reduces the compensation to a single pole requirement.

While current mode control addresses some of the drawbacks of VMC, it introduces challenges that can effect the circuit performance. The addition of the current feedback loop increases the complexity of the control/feedback circuit and circuit analysis. Stability across the entire range of duty cycles and sensitivity to noise signals are other items that need to be considered in the selection of current mode control. CMC can further be broken down into several different types of control schemes: peak, valley, emulated, hysteretic, and average CMC. The below text discusses the two most common methodologies used in circuit design — peak and average current mode control.

## Peak Current Mode Control

Peak current mode control (PCMC) utilizes the current waveform directly as the ramp waveform into the PWM-generation comparator instead of an externally generated sawtooth- or triangle-signal like VMC. The up-slope portion of the inductor current or high-side transistor current waveform is used to provide a fast response control loop in addition to the existing voltage control loop. As shown in Figure 1, the current signal is compared with the output of the voltage error amplifier to generate the PWM control signal for the power supply.

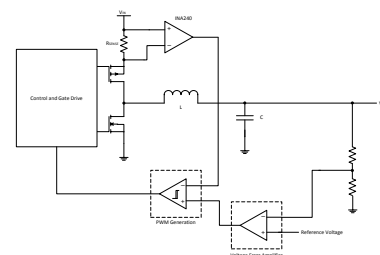
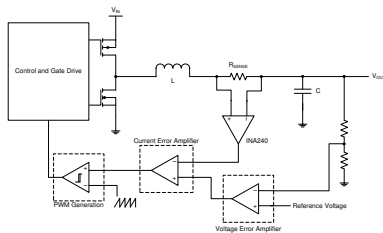


Figure 1. Block Diagram of PCMC circuit

Switching power supplies provide high levels of efficiency between the input and output power rails. To maintain the high efficiency of the converter, ideally the sense resistor used to measure the inductor current is as small as possible to reduce power loss due to the measurement. This small-valued resistor results in a small amplitude feedback signal. Since the inductor current waveform is used directly as the comparator input signal, PCMC is known to be susceptible to noise and voltage transients. Using a current sense amplifier like the [INA240](#) with high common-mode rejection ratio (CMRR) provides suppression of transients associated with pulse-width modulation (PWM) signals and systems. The gain flexibility of the [INA240](#) allows the inductor current waveform be amplified to provide a larger signal for comparison without the need for additional gain or sacrificing performance. Additionally, the low offset and gain errors provide a reduction in design variations and changes across temperature. To utilize PCMC, the inductor current necessitates a high common-mode voltage measurement. The [INA240](#) common-mode range allows for a wide range in supply input and output voltages.

It should be noted that PCMC most often adds slope compensation to address stability issues with duty cycles greater than 50%. The slope compensation is added to the inductor current before being used as the comparator input signal.



**Figure 2. Block Diagram of ACMC circuit**

### Average Current Mode Control

Average current mode control (ACMC) utilizes the inductor current waveform and an additional gain and integration stage before the signal is compared to a externally provided ramp waveform (similar to VMC). This allows improved immunity to noise and removes the need for slope compensation. [Figure 2](#) shows a block diagram of ACMC operation for a buck converter.

The noise sensitivity of PCMC methodology is improved using ACMC to acceptable performance levels with the [INA240](#) high CMRR helping to provide additional transient reduction. The [INA240](#) high common-mode range is required to make the inductor current measurement and allows usage of the current amplifier in a wide-range of output voltages. The

[INA240](#) high accuracy and low drift specifications provide consistent measurement across temperature and different assemblies.

The [INA240](#) provides performance and features for measurement accuracy which is needed to maintain good control signal integrity. The [INA240](#) features a 25 $\mu$ V maximum input offset voltage and a 0.20% maximum gain error specification at room temperature. Temperature stability is important to maintain system performance and the [INA240](#) provides input offset voltage drift of 250nV/ $^{\circ}$ C with a 2.5ppm/ $^{\circ}$ C amplifier gain drift. The [INA240](#) features enhanced PWM rejection to improve performance with large common-mode transients and a wide common-mode input range for maximum design variance for supply output voltages.

### Alternative Device Recommendations

Based on system requirements, alternative devices are available that can provide the needed performance and functionality. The [LMP8601](#) family provides lower performance levels than the [INA240](#) for in-line sensing applications. The [INA282](#) allows current measurement for high common-mode voltages, making it ideal for high voltage DC application that do not have PWM signals. The [INA290](#) is a high-voltage current sense amplifier with high bandwidth packaged in a small SC-70 package.

**Table 1. Alternative Device Recommendations**

Device	Optimized Parameters	Performance Trade-Off
<a href="#">INA253</a>	Integrated Low inductive precision shunt: 2m $\Omega$ , 0.1%, Enhanced PWM rejection	+/-15A maximum continuous current at $T_A = 85^{\circ}$ C
<a href="#">INA282</a>	Low power, High Gain Options, High Supply Voltage	No Enhanced PWM Rejection, Higher drift specifications
<a href="#">INA290</a>	Wide Common-Mode Input Range, High bandwidth, Small SC-70 package	No Enhanced PWM Rejection, Unidirectional, Common-mode range does not include ground

### Related Documentation

1. [Precision Brightness and Color Mixing in LED Lighting Using Discrete Current Sense Amplifiers](#)
2. [Current Sensing in an H-Bridge](#)
3. [Switching Power Supply Current Measurements](#)

## IMPORTANT NOTICE AND DISCLAIMER

TI PROVIDES TECHNICAL AND RELIABILITY DATA (INCLUDING DATA SHEETS), DESIGN RESOURCES (INCLUDING REFERENCE DESIGNS), APPLICATION OR OTHER DESIGN ADVICE, WEB TOOLS, SAFETY INFORMATION, AND OTHER RESOURCES "AS IS" AND WITH ALL FAULTS, AND DISCLAIMS ALL WARRANTIES, EXPRESS AND IMPLIED, INCLUDING WITHOUT LIMITATION ANY IMPLIED WARRANTIES OF MERCHANTABILITY, FITNESS FOR A PARTICULAR PURPOSE OR NON-INFRINGEMENT OF THIRD PARTY INTELLECTUAL PROPERTY RIGHTS.

These resources are intended for skilled developers designing with TI products. You are solely responsible for (1) selecting the appropriate TI products for your application, (2) designing, validating and testing your application, and (3) ensuring your application meets applicable standards, and any other safety, security, regulatory or other requirements.

These resources are subject to change without notice. TI grants you permission to use these resources only for development of an application that uses the TI products described in the resource. Other reproduction and display of these resources is prohibited. No license is granted to any other TI intellectual property right or to any third party intellectual property right. TI disclaims responsibility for, and you will fully indemnify TI and its representatives against, any claims, damages, costs, losses, and liabilities arising out of your use of these resources.

TI's products are provided subject to [TI's Terms of Sale](#) or other applicable terms available either on [ti.com](http://ti.com) or provided in conjunction with such TI products. TI's provision of these resources does not expand or otherwise alter TI's applicable warranties or warranty disclaimers for TI products.

TI objects to and rejects any additional or different terms you may have proposed.

Mailing Address: Texas Instruments, Post Office Box 655303, Dallas, Texas 75265  
Copyright © 2022, Texas Instruments Incorporated