

ISO72x Digital Isolator Magnetic-Field Immunity

Kevin Gingerich

High-Performance Linear/Interface Products

ABSTRACT

The purpose of this analysis is to estimate the immunity of the ISO72x family of digital isolators to magnetic fields.

Contents

1	Introduction	1
2	Differential Noise Budget	2
3	emf Calculation.....	3
4	Magnetic Field Sensitivity.....	4
5	Conclusions.....	5
6	References	5

List of Figures

1	ISO721 Inter-Die Bonds	2
2	Equivalent Barrier Differential Circuit Schematic	2
3	Magnetic Flux Density vs Frequency Magnetic Field Immunities and Test Thresholds.....	5

List of Tables

1	Solutions to Equations	4
---	------------------------------	---

Trademarks

All trademarks are the property of their respective owners.

1 Introduction

The expected application environment of a digital isolator includes close proximity to large motors and other magnetic-field-generating equipment. Data errors due to exposure to such fields are a concern. This is especially so because TI is applying a novel capacitive-coupled isolation barrier.

The ISO72x isolators transfer the data signals differentially across the isolation barrier through two capacitors formed with a metal top plate and conductive silicon bottom plate on each side of a SiO₂ dielectric. The drive circuits reside on one substrate and the capacitors and receiving circuits reside on another substrate. [Figure 1](#) shows the bond wires between the two substrates that complete the circuit. The electromotive force (emf) from time-varying magnetic fields in these differential circuits is the subject of this analysis. A noise budget is developed and Faraday’s Law applied to estimate the magnetic flux density necessary to exceed the budget. Pulse magnetic field test results per CEI IEC 61000-4-9 offer empirical validation of the analysis.

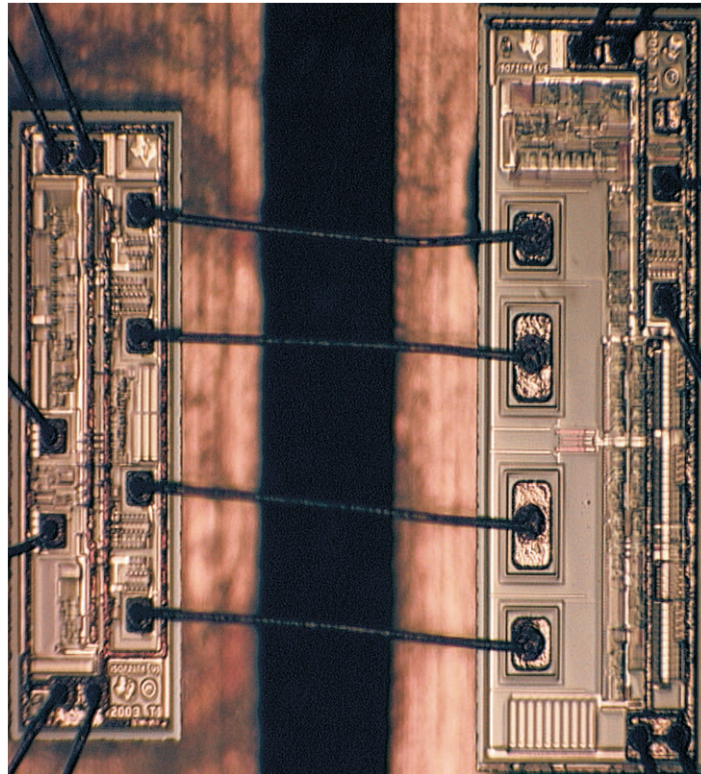


Figure 1. ISO721 Inter-Die Bonds

2 Differential Noise Budget

Figure 2 shows a basic model of the circuit path across the isolation barrier of the ISO72x. V_i is the output of a CMOS totem-pole driver operating from V_{CC1} and v_n represents differential noise. The isolation capacitors differentiate v_i and v_n such that only time-varying and amplitude information is presented to the receiver inputs. The receiver, operating from V_{CC2} , amplifies the differential signal for level comparison, latching, validation, and presentation to the output.

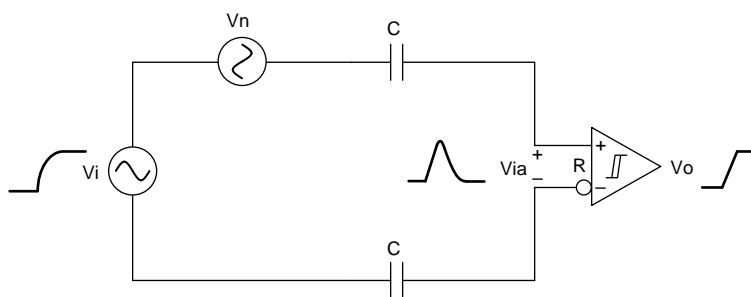


Figure 2. Equivalent Barrier Differential Circuit Schematic

In the absence of differential noise and during the steady state, there is no differential voltage across the inputs of the receiver, and the output is the last state latched. When the differential voltage v_{ia} exceeds the receiver positive-going or negative-going threshold voltage for a sufficient period, a state change occurs at the output of the receiving circuitry. Preferably, the state change is from v_i and not v_n . To prevent state changes from noise, the input voltage from v_n must remain below the positive-going threshold and above the negative-going threshold of the receiver during the steady state.

The lowest positive-going differential input voltage threshold of the ISO72x receiver is 10 mV, and the highest negative-going threshold is –10 mV. These thresholds apply over its recommended operating conditions and sinusoidal frequencies up to approximately 30 MHz. Above this frequency, the gain of the receiver decreases requiring more input voltage to cross the threshold and raising the input threshold magnitude. Therefore, it can be postulated that no steady-state errors occur if the magnitude of v_{ia} due to v_n is less than 10 mV for noise frequencies up to 30 MHz. Circuit simulation predicts a 100-MHz minimum noise threshold magnitude of 16.7 mV.

The input and output voltage of the circuit in the frequency domain is related by the system function $H(\omega)$ such that

$$V_{ia}(\omega) = V_n(\omega)H(\omega),$$

where

$$H(\omega) = \frac{j\omega}{j\omega + \frac{2}{RC}}$$

The requirement is that the magnitude of v_{ia} be less than the minimum receiver threshold which is identified as $V_{IT}(\omega)$ and $|v_{ia}(\omega)| < |V_{IT}(\omega)|$. Making the substitutions and rearranging gives:

$$|V_n(\omega)H(\omega)| < |V_{IT}(\omega)| \tag{2}$$

and

$$|V_n(\omega)| < \frac{|V_{IT}(\omega)| \sqrt{\omega^2 + \frac{4}{(RC)^2}}}{\omega} \tag{3}$$

The value of RC is approximately 43.8 ps, giving sufficient information to calculate differential noise margins.

Two primary sources of differential noise in the circuit are emf and common-mode-to-differential voltage conversion. Conservatively, one-half of the differential noise margin is allocated to each source giving the equation for the emf noise margin as shown in [Equation 4](#).

$$|V_n(\omega)| < \frac{|V_{IT}(\omega)| \sqrt{\omega^2 + \frac{4}{(RC)^2}}}{2\omega} \tag{4}$$

3 emf Calculation

An electromotive force is merely a voltage that arises from conductors moving in a magnetic field or from changing magnetic fields. Faraday's Law for electromagnetic induction in a nonmoving circuit states that the emf induced is proportional to the time rate of change of the magnetic flux linked with the circuit. For stationary circuits, this law may be stated as shown in [Equation 5](#).

$$\text{emf} = \oint \vec{E} \cdot d\vec{l} = - \frac{d}{dt} \int_{\text{surface}} \vec{B} \cdot d\vec{s} = - \int \frac{\partial \vec{B}}{\partial t} \cdot d\vec{s}$$

where

- E is the electric field intensity along a path length dl.
- B is the magnetic flux density normal to the surface ds. (5)

Assume a B field of $B_0 \sin \omega_0 t$ normal to and uniform over the surface. Taking the time partial derivative gives:

$$\text{emf} = - B_0 \omega_0 \cos \omega_0 t \int_{\text{surface}} d\vec{s} \tag{6}$$

Of course, the surface integral of ds is simply the area enclosed by the loop, S, giving:

$$\text{emf}(t) = - B_0 \omega_0 S \cos \omega_0 t \tag{7}$$

Each channel of the ISO72x has high-speed and low-speed isolated signals. The high-speed signal transfers input state changes whereas the low-speed signal transfers low-frequency, internally generated signals used to keep the input and output in the same state. (The loop nearest to the top of the page in [Figure 1](#) is the high-speed circuit.) The two circuits are electrically the same but slightly differ in physical layout.

The differential circuit areas for integration are approximately rectangular, and the centers of the bond pads used to connect the inter-die wires define the corners. The nominal length of the inter-die bond wires is 954E-06 m. The distance between differential bond pads are the same on both die and 360E-06 m for the high-speed circuit and 990E-06 m for the low-speed circuit. This gives areas of 343E-09 m² for the high-speed differential loop and 944E-09 m² for the low-speed circuit. Because the largest area gives the greatest emf, the low-speed loop area is used.

Substituting this gives $emf(t) = -B_0\omega_0 944 \times 10^{-9} \cos \omega_0 t$ and, because the concern is only with magnitudes, emf becomes:

$$emf = B_0\omega_0 944 \times 10^{-9} \text{ V.} \tag{8}$$

4 Magnetic Field Sensitivity

Now, the maximum magnetic flux density can be calculated by bounding the magnitude of the emf with the emf noise margin or Equation 9

$$B_0\omega_0 944 \times 10^{-9} < \frac{|V_{IT}(\omega)|}{2\omega} \sqrt{\omega^2 + \frac{4}{(RC)^2}} \tag{9}$$

Solving the inequality for B₀ at ω₀ gives:

$$B_0 < \frac{|V_{IT}(\omega_0)| \sqrt{\omega_0^2 + \frac{4}{(RC)^2}}}{2 \times 944 \times 10^{-9} \omega_0^2} \text{ Wb / m}^2 \tag{10}$$

Table 1 solves Equation 4, Equation 8, and Equation 10 at different noise frequencies (ω = 2πf).

Table 1. Solutions to Equations

f	V _{IT}	emf	B ₀
0.001 MHz	10 mV	72,700 V	12.3E+6 Wb/m ²
0.01	10	7,270	122.6E+3
0.1	10	727	1.2E+3
1	10	72.7	12.3E+0
10	10	7.27	122.6E-3
30	10	2.4	13.6E-3
100	16.7	1.2	2.0E-3

For perspective, the magnetic flux density produced by a current element $I \, 0 \, dl$ may be interpreted as shown in Equation 11.

$$\mathbf{B} = \oint \frac{\mu_0 dl}{4\pi r^2} = \frac{\mu_0 I}{4\pi r^2}$$

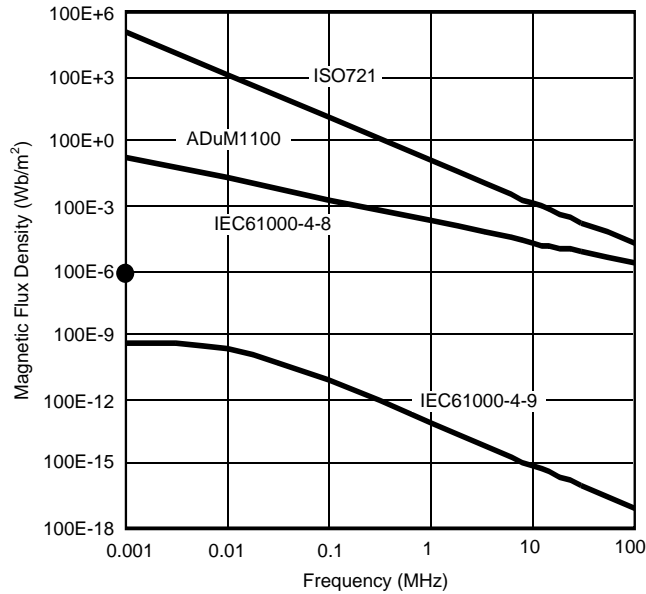
where

- $4\pi r^2$ is the surface area of a sphere of radius r positioned at each point along the conductor of length l. (11)

If a 0.1-m differential current element is assumed as the source and $\mu = \mu_0$ and $r = 0.1$ m, the current would need to be in excess of ten million amperes to produce a magnetic flux density of 12.3 Wb/m² and exceed the 1-MHz limit.

The unshielded ISO721 has successfully passed the Class-5 magnetic field immunity requirements of IEC 61000-4-8 power-frequency fields up to 100 A/m (125.6 × 10⁻⁶ Wb/m²) and IEC 61000-4-9 pulsed fields to 1000 A/m (1.256 × 10⁻³ Wb/m²). The standard defines Class 5 as applying to severe industrial environments characterized by conductors, bus bars, medium-voltage lines, or high-voltage lines carrying tens of kA; ground conductors of the lightning protection system or high structures (like the line towers) carrying the whole lightning current. Switchyard areas of heavy industrial plants and power stations may be representative of this environment.

Figure 3 graphically compares the calculated magnetic field immunity thresholds of the ISO721 and Analog Device’s ADuM1100⁽¹⁾ along with the Class-5 (highest) test levels of IEC 61000-4-8 and IEC 61000-4-9⁽²⁾.



- (1) Data was taken from Figure 8 of revision E of the ADuM1100 data sheet and converted to comparable units.
- (2) Assumes the permeability of free space and approximates the IEC 61000-4-9 pulse shape as $304 / [(j\omega + 78.7 \times 10^3) (j\omega + 10^5)]$.

**Figure 3. Magnetic Flux Density vs Frequency
Magnetic Field Immunities and Test Thresholds**

5 Conclusions

Magnetic coupling in the differential circuit of the low-speed signal of the ISO72x exceeding the noise budget requires a magnetic flux density greater than 12.3 Wb/m² (123 kGauss) at 1 MHz. This would be the field generated by over ten million amperes in a 0.1-m conductor 0.1 m away from the device. It is unlikely that this will occur in nature or any manufactured equipment. If it did, it is more likely that surrounding circuitry would fail before the barrier circuit of the ISO72x.

We currently recommend the [ISO7710](#) from our newest [ISO77xx](#) family of digital isolators with improved isolation ratings.

6 References

- Fink, Donald G., *Electronic Engineers' Handbook*, McGraw-Hill, 1975
- Hayt, William H., Jr., *Engineering Electromagnetics*, McGraw-Hill, 1974
- McGillem, Clare D. and Cooper, George R., *Continuous and Discrete Signal and System Analysis*, Holt, Rinehart and Winston, Inc., 1974
- *Electromagnetic Interference Test Report for the ISO721 HIGH-SPEED DIGITAL ISOLATOR*, Southwest Research Institute, Document no. EMCR 05/019 rev. 00, August 2005

Revision History

NOTE: Page numbers for previous revisions may differ from page numbers in the current version.

Changes from A Revision (February 2006) to B Revision	Page
• Added the reference to the ISO7710 device in the <i>Conclusions</i>	5

IMPORTANT NOTICE FOR TI DESIGN INFORMATION AND RESOURCES

Texas Instruments Incorporated ("TI") technical, application or other design advice, services or information, including, but not limited to, reference designs and materials relating to evaluation modules, (collectively, "TI Resources") are intended to assist designers who are developing applications that incorporate TI products; by downloading, accessing or using any particular TI Resource in any way, you (individually or, if you are acting on behalf of a company, your company) agree to use it solely for this purpose and subject to the terms of this Notice.

TI's provision of TI Resources does not expand or otherwise alter TI's applicable published warranties or warranty disclaimers for TI products, and no additional obligations or liabilities arise from TI providing such TI Resources. TI reserves the right to make corrections, enhancements, improvements and other changes to its TI Resources.

You understand and agree that you remain responsible for using your independent analysis, evaluation and judgment in designing your applications and that you have full and exclusive responsibility to assure the safety of your applications and compliance of your applications (and of all TI products used in or for your applications) with all applicable regulations, laws and other applicable requirements. You represent that, with respect to your applications, you have all the necessary expertise to create and implement safeguards that (1) anticipate dangerous consequences of failures, (2) monitor failures and their consequences, and (3) lessen the likelihood of failures that might cause harm and take appropriate actions. You agree that prior to using or distributing any applications that include TI products, you will thoroughly test such applications and the functionality of such TI products as used in such applications. TI has not conducted any testing other than that specifically described in the published documentation for a particular TI Resource.

You are authorized to use, copy and modify any individual TI Resource only in connection with the development of applications that include the TI product(s) identified in such TI Resource. NO OTHER LICENSE, EXPRESS OR IMPLIED, BY ESTOPPEL OR OTHERWISE TO ANY OTHER TI INTELLECTUAL PROPERTY RIGHT, AND NO LICENSE TO ANY TECHNOLOGY OR INTELLECTUAL PROPERTY RIGHT OF TI OR ANY THIRD PARTY IS GRANTED HEREIN, including but not limited to any patent right, copyright, mask work right, or other intellectual property right relating to any combination, machine, or process in which TI products or services are used. Information regarding or referencing third-party products or services does not constitute a license to use such products or services, or a warranty or endorsement thereof. Use of TI Resources may require a license from a third party under the patents or other intellectual property of the third party, or a license from TI under the patents or other intellectual property of TI.

TI RESOURCES ARE PROVIDED "AS IS" AND WITH ALL FAULTS. TI DISCLAIMS ALL OTHER WARRANTIES OR REPRESENTATIONS, EXPRESS OR IMPLIED, REGARDING TI RESOURCES OR USE THEREOF, INCLUDING BUT NOT LIMITED TO ACCURACY OR COMPLETENESS, TITLE, ANY EPIDEMIC FAILURE WARRANTY AND ANY IMPLIED WARRANTIES OF MERCHANTABILITY, FITNESS FOR A PARTICULAR PURPOSE, AND NON-INFRINGEMENT OF ANY THIRD PARTY INTELLECTUAL PROPERTY RIGHTS.

TI SHALL NOT BE LIABLE FOR AND SHALL NOT DEFEND OR INDEMNIFY YOU AGAINST ANY CLAIM, INCLUDING BUT NOT LIMITED TO ANY INFRINGEMENT CLAIM THAT RELATES TO OR IS BASED ON ANY COMBINATION OF PRODUCTS EVEN IF DESCRIBED IN TI RESOURCES OR OTHERWISE. IN NO EVENT SHALL TI BE LIABLE FOR ANY ACTUAL, DIRECT, SPECIAL, COLLATERAL, INDIRECT, PUNITIVE, INCIDENTAL, CONSEQUENTIAL OR EXEMPLARY DAMAGES IN CONNECTION WITH OR ARISING OUT OF TI RESOURCES OR USE THEREOF, AND REGARDLESS OF WHETHER TI HAS BEEN ADVISED OF THE POSSIBILITY OF SUCH DAMAGES.

You agree to fully indemnify TI and its representatives against any damages, costs, losses, and/or liabilities arising out of your non-compliance with the terms and provisions of this Notice.

This Notice applies to TI Resources. Additional terms apply to the use and purchase of certain types of materials, TI products and services. These include; without limitation, TI's standard terms for semiconductor products (<http://www.ti.com/sc/docs/stdterms.htm>), [evaluation modules](#), and [samples](http://www.ti.com/sc/docs/sampterm.htm) (<http://www.ti.com/sc/docs/sampterm.htm>).

Mailing Address: Texas Instruments, Post Office Box 655303, Dallas, Texas 75265
Copyright © 2018, Texas Instruments Incorporated