

AN-1752 5A LM20k Reference Designs

ABSTRACT

This application note discusses the design options using the high performance 5A synchronous buck converters LM20125 and LM20145.

Contents

| | | |
|-----|--|---|
| 1 | Introduction | 2 |
| 2 | Solution Optimized for Size and Efficiency | 2 |
| 2.1 | Inductor Selection | 2 |
| 2.2 | Output Capacitor Selection | 2 |
| 2.3 | Compensation Selection | 3 |
| 3 | Solution Optimized for Transient Response | 5 |
| 3.1 | Inductor Selection | 5 |
| 3.2 | Output Capacitor Selection | 5 |
| 3.3 | Compensation Selection | 5 |

List of Figures

| | | |
|---|--|---|
| 1 | 3.3V Output Solution Optimized for Size and Efficiency | 3 |
| 2 | Efficiency vs I_{OUT} | 4 |
| 3 | Output Voltage Ripple | 4 |
| 4 | Transient Response | 4 |
| 5 | 1.2V Output Solution Optimized for Load Transients | 5 |
| 6 | Efficiency vs I_{OUT} | 6 |
| 7 | Output Voltage Ripple | 6 |
| 8 | Transient Response | 7 |

List of Tables

| | | |
|---|---|---|
| 1 | High Efficiency Bill of Materials ($V_{IN} = 5V$, $V_{OUT} = 3.3V$, $I_{OUT(MAX)} = 5A$) | 3 |
| 2 | Transient Response Bill of Materials ($V_{IN} = 5V$, $V_{OUT} = 1.2V$, $I_{OUT(MAX)} = 5A$, $f_{SW} = 750\text{ kHz}$) | 5 |

1 Introduction

The LM20125 and LM20145 are a full-featured family of high performance 5A synchronous buck converters. These devices are tailored to operate over an input voltage range of 2.95V to 5.5V and each can be optimized to meet many different performance requirements. The LM20125 operates at a fixed frequency and only requires 11 components to generate a solution. The LM20145 is similar to the LM20125 except the frequency of the device can be varied from 250 kHz to 750 kHz with an external resistor. This gives the power supply designer the flexibility to trade-off inductor size, efficiency, as well as AC performance.

The reference designs discussed will show how the 5A devices can be optimized for size, efficiency and transient response. The trade-offs made for each design will be discussed as well as possible tweaks to interchange the various 5A devices. Test results for including efficiency, output voltage ripple, and transient response will be shown for each design

2 Solution Optimized for Size and Efficiency

To minimize the switching losses and reduce the solution size the LM20125 device was selected. This device operates at a fixed frequency of 500kHz keeping the switching losses down; while also allowing use of a relatively small inductor. Therefore, this solution can offer both small size, as well as, high efficiency.

2.1 Inductor Selection

As per the datasheet recommendations, the inductor value should initially be chosen to give a peak-to-peak ripple current equal to roughly 30% of the maximum output current. The peak-to-peak inductor ripple current can be calculated by the equation:

$$\Delta I_{P-P} = \frac{(V_{IN} - V_{OUT}) \times D}{L \times f_{SW}} \quad (1)$$

Rearranging the above equation and solving for the inductance reveals that for this application ($V_{IN} = 5V$, $V_{OUT} = 3.3V$, $f_{SW} = 500$ kHz, and $I_{OUT} = 5A$) the nominal inductance value is roughly 1.5 μH . Once an inductance value is calculated, an actual inductor needs to be selected based on a trade-off between physical size, efficiency, and current carrying capability. Since the purpose of this design is to maximize the efficiency and keep the solution size small the inductor values smaller than 1.5 μH can be examined, provided the output current plus one-half the peak to peak ripple current does not exceed the device current limit. Examining several inductor vendors a TDK SPM6530T-1R5M100 inductor was selected. This 1.5 μH inductor results in a peak-to-peak ripple current of 1.5A when doing a 5V to 3.3V conversion. For the LM20125 demo board, a TDK SPM6530T-1R5M100 inductor offers a good balance between efficiency (9.7 m Ω DCR), size, and saturation current rating (10A I_{SAT} rating).

2.2 Output Capacitor Selection

The value of the output capacitor in a buck regulator influences the voltage ripple that will be present on the output voltage, as well as the large signal output voltage response to a load transient. Given the peak-to-peak inductor current ripple (which can be calculated using equation 1) the output voltage ripple can be approximated by the equation:

$$\Delta V_{OUT} = \Delta I_{P-P} \times \left[R_{ESR} + \frac{1}{8 \times f_{SW} \times C_{OUT}} \right] \quad (2)$$

The variable R_{ESR} above refers to the ESR of the output capacitor. As can be seen in the above equation, the ripple voltage on the output can be divided into two parts, one of which is attributed to the AC ripple current flowing through the ESR of the output capacitor and another due to the AC ripple current actually charging and discharging the output capacitor. The output capacitor also has an effect on the amount of droop that is seen on the output voltage in response to a load transient event.

For this design a TDK 100 μF ceramic capacitor is selected for the output capacitor to provide good transient and DC performance in a relatively small package. From the technical specifications of this capacitor, the ESR at the 500 kHz switching frequency is roughly 2 m Ω , and the effective in-circuit capacitance is approximately 45 μF (reduced from 100 μF due to the 3.3V DC bias). With these values, the peak-to-peak voltage ripple on the output when operating from a 5V input can be calculated to be 8 mV.

2.3 Compensation Selection

The compensation network was selected using the excel design tool (available online) to give a crossover frequency of 59 kHz. For this target crossover frequency, operating conditions, and filter components the excel design tool suggested a value of C_{C1} of 1.2 nF and a value of R_{C1} of 19.6 k Ω .

The final schematic for a 5V to 3.3V conversion is shown in [Figure 1](#).

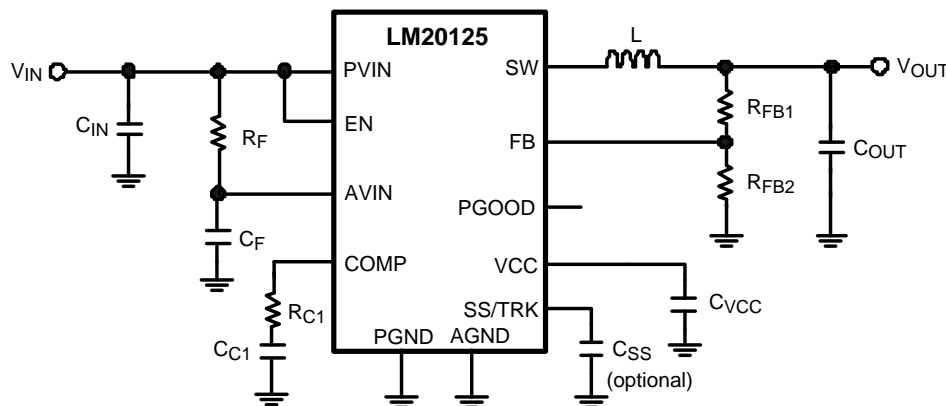


Figure 1. 3.3V Output Solution Optimized for Size and Efficiency

Table 1. High Efficiency Bill of Materials ($V_{IN} = 5\text{V}$, $V_{OUT} = 3.3\text{V}$, $I_{OUT(MAX)} = 5\text{A}$)

| Designator | Description | Part Number | Manufacturer | Qty |
|------------|-------------------------------------|-------------------|-------------------|-----|
| U1 | Synchronous Buck Regulator | LM20125 | Texas Instruments | 1 |
| C_{IN} | 47 μF , 1206, X5R, 6.3V | C3216JB0J476M | TDK | 1 |
| C_{OUT} | 100 μF , 1206, X5R, 6.3V | C3225X5R0J107M | TDK | 1 |
| L | 1.5 μH , 9.7m Ω | SPM6530T-1R5M100 | TDK | 1 |
| R_F | 1 Ω , 0402 | CRCW04021R0J-e3 | Vishay-Dale | 1 |
| C_F | 1 μF , 0402, X7R, 10V | GRM155R61A105KE15 | Murata | 1 |
| C_{VCC} | 1 μF , 0402, X7R, 10V | GRM155R61A105KE15 | Murata | 1 |
| R_{C1} | 19.6k Ω , 0402 | CRCW06031962F | Vishay-Dale | 1 |
| C_{C1} | 1.2nF, 0402, X7R, 25V | VJ0603Y122KXA | Vishay-Vitramon | 1 |
| C_{SS} | 33nF, 0402, X7R, 25V | VJ0402G333KXJA | Vishay-Vitramon | 1 |
| R_{FB1} | 30.9k Ω , 0402 | CRCW04023092F-e3 | Vishay-Dale | 1 |
| R_{FB2} | 10k Ω , 0402 | CRCW04021002F-e3 | Vishay-Dale | 1 |

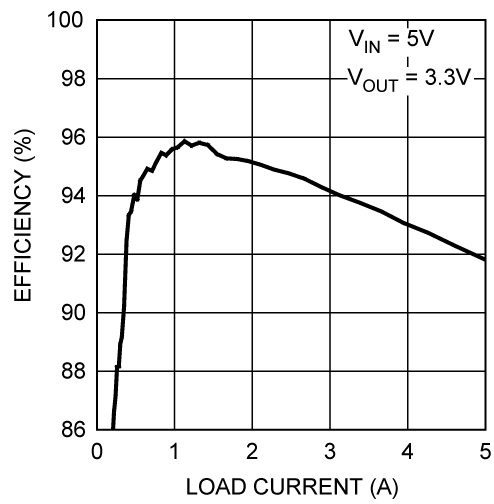


Figure 2. Efficiency vs I_{OUT}

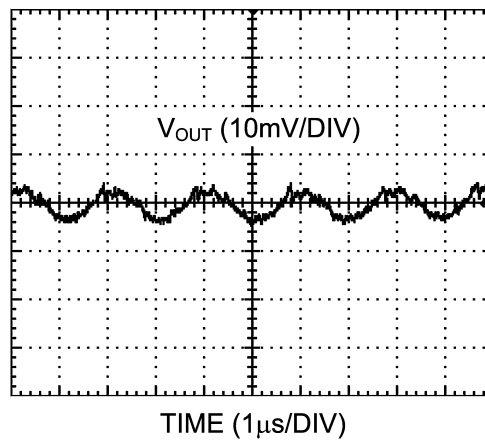


Figure 3. Output Voltage Ripple

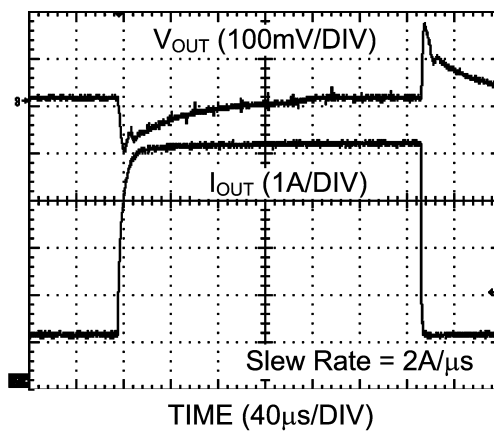


Figure 4. Transient Response

3 Solution Optimized for Transient Response

To optimize the transient response the switching frequency should be as high as possible. A high switching frequency allows the crossover frequency to be maximized and the inductor size to be minimized. A small inductor also permits the inductor current to quickly ramp during a load step change.

3.1 Inductor Selection

The inductor should be sized for approximately 30% ripple current. For $V_{IN} = 5V$, $V_{OUT} = 1.2V$, $f_{SW} = 750$ kHz, and $I_{OUT} = 5A$, the ideal inductance value can be calculated from equation 1 to be of $0.81 \mu H$. Once an inductance value is calculated, an actual inductor needs to be selected based on a trade-off between physical size, efficiency, and current carrying capability. Since the purpose of this design is to select the smallest value inductor, values smaller than $0.81 \mu H$ can be examined as long as the output current plus one-half the peak to peak ripple current does not exceed the device current limit. Examining several inductor vendors a TDK SPM6530T-1R0M120 inductor was selected. This $1 \mu H$ inductor results in a peak-to-peak ripple current of $1.22 A$ when the converter is operating from $5V$ and $3.3V$. For this design, the TDK SPM6530T-1R0M120 inductor offers a good balance between efficiency ($7.1 m\Omega$ DCR), size, and saturation current rating ($12A I_{SAT}$ rating).

3.2 Output Capacitor Selection

A Sanyo $680 \mu F$ POSCAP capacitor with $18 m\Omega$ of series resistance (ESR) is selected for the output capacitor to provide good transient and DC performance in a relatively small package. To further reduce the output voltage ripple, a $47 \mu F$ ceramic capacitor is placed in parallel with the Sanyo POSCAP.

3.3 Compensation Selection

The compensation network was selected using the excel design tool (available online) to give a crossover frequency of 91 kHz. For this target crossover frequency, operating conditions, and filter components a value for C_{C1} of 0.68 nF and a value for R_{C1} of 82.5 k Ω were selected. Since the output capacitor value and ESR are large, an additional capacitor C_{C2} is recommended. For this design C_{C2} is 27 pF.

The final schematic for a $5V$ to $1.2V$ or $3.3V$ to $1.2V$ conversion is shown in [Figure 1](#).

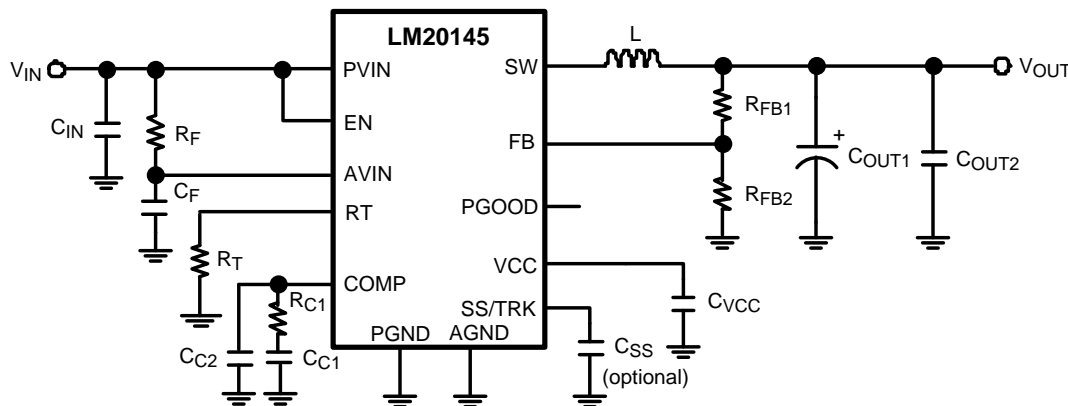


Figure 5. 1.2V Output Solution Optimized for Load Transients

Table 2. Transient Response Bill of Materials ($V_{IN} = 5V$, $V_{OUT} = 1.2V$, $I_{OUT(MAX)} = 5A$, $f_{SW} = 750$ kHz)

| Designator | Description | Part Number | Manufacturer | Qty |
|------------|--------------------------------|------------------|-------------------|-----|
| U1 | Synchronous Buck Regulator | LM20145 | Texas Instruments | 1 |
| C_{IN} | $47\mu F$, 1206, X5R, 6.3V | C3216JB0J476M | TDK | 1 |
| C_{OUT1} | $680\mu F$, D4D, POSCAP, 6.3V | 6TPE680MIL | Sanyo | 1 |
| C_{OUT2} | $47\mu F$, 1206, X5R, 6.3V | C3216JB0J476M | TDK | 1 |
| L | $1.0\mu H$, $7.1m\Omega$ | SPM6530T-1R0M120 | TDK | 1 |
| R_F | 1Ω , 0603 | CRCW06031R0J-e3 | Vishay-Dale | 1 |

Table 2. Transient Response Bill of Materials ($V_{IN} = 5V$, $V_{OUT} = 1.2V$, $I_{OUT(MAX)} = 5A$, $f_{SW} = 750$ kHz) (continued)

| Designator | Description | Part Number | Manufacturer | Qty |
|------------|---------------------------|-------------------|-----------------|-----|
| C_F | 1 μ F, 0603, X7R, 10V | GRM188R71A105KA01 | Murata | 1 |
| C_{VCC} | 1 μ F, 0603, X7R, 10V | GRM188R71A105KA01 | Murata | 1 |
| R_{C1} | 82.5k Ω ,0603 | CRCW06038252F-e3 | Vishay-Dale | 1 |
| C_{C1} | 0.68nF,0603,X7R,25V | VJ0603Y681KXXA | Vishay-Vitramon | 1 |
| C_{C2} | 27pF, 0603,50V,COG | GRM18885C1H2701 | Murata | 1 |
| C_{SS} | 33nF,0603,X7R,25V | VJ0603Y333KXXA | Vishay-Vitramon | 1 |
| R_{FB1} | 4.99k Ω ,0603 | CRCW06034992F-e3 | Vishay-Dale | 1 |
| R_{FB2} | 10k Ω , 0603 | CRCW06031002F-e3 | Vishay-Dale | 1 |
| R_T | 48.7k Ω , 0603 | CRCW06034872F-e3 | Vishay-Dale | 1 |

The calculated component PCB area for this design is 134 mm². The efficiency vs. I_{OUT} , output voltage ripple, and transient response are shown below for this solution.

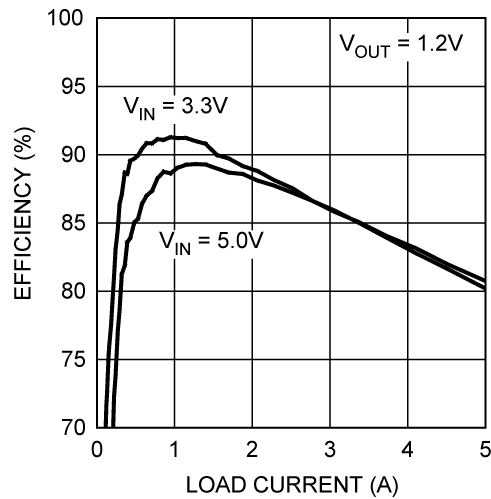


Figure 6. Efficiency vs I_{OUT}

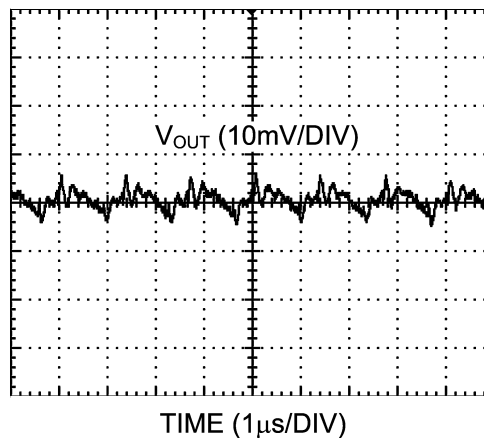


Figure 7. Output Voltage Ripple

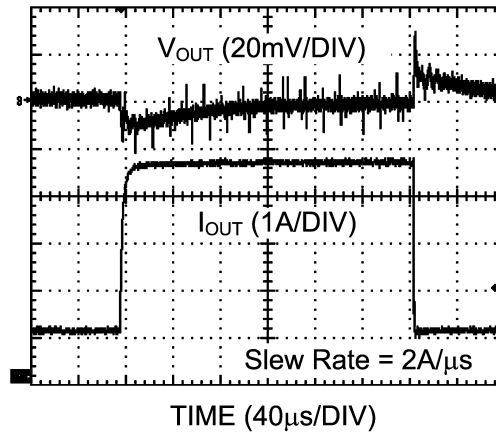


Figure 8. Transient Response

IMPORTANT NOTICE

Texas Instruments Incorporated and its subsidiaries (TI) reserve the right to make corrections, enhancements, improvements and other changes to its semiconductor products and services per JESD46, latest issue, and to discontinue any product or service per JESD48, latest issue. Buyers should obtain the latest relevant information before placing orders and should verify that such information is current and complete. All semiconductor products (also referred to herein as "components") are sold subject to TI's terms and conditions of sale supplied at the time of order acknowledgment.

TI warrants performance of its components to the specifications applicable at the time of sale, in accordance with the warranty in TI's terms and conditions of sale of semiconductor products. Testing and other quality control techniques are used to the extent TI deems necessary to support this warranty. Except where mandated by applicable law, testing of all parameters of each component is not necessarily performed.

TI assumes no liability for applications assistance or the design of Buyers' products. Buyers are responsible for their products and applications using TI components. To minimize the risks associated with Buyers' products and applications, Buyers should provide adequate design and operating safeguards.

TI does not warrant or represent that any license, either express or implied, is granted under any patent right, copyright, mask work right, or other intellectual property right relating to any combination, machine, or process in which TI components or services are used. Information published by TI regarding third-party products or services does not constitute a license to use such products or services or a warranty or endorsement thereof. Use of such information may require a license from a third party under the patents or other intellectual property of the third party, or a license from TI under the patents or other intellectual property of TI.

Reproduction of significant portions of TI information in TI data books or data sheets is permissible only if reproduction is without alteration and is accompanied by all associated warranties, conditions, limitations, and notices. TI is not responsible or liable for such altered documentation. Information of third parties may be subject to additional restrictions.

Resale of TI components or services with statements different from or beyond the parameters stated by TI for that component or service voids all express and any implied warranties for the associated TI component or service and is an unfair and deceptive business practice. TI is not responsible or liable for any such statements.

Buyer acknowledges and agrees that it is solely responsible for compliance with all legal, regulatory and safety-related requirements concerning its products, and any use of TI components in its applications, notwithstanding any applications-related information or support that may be provided by TI. Buyer represents and agrees that it has all the necessary expertise to create and implement safeguards which anticipate dangerous consequences of failures, monitor failures and their consequences, lessen the likelihood of failures that might cause harm and take appropriate remedial actions. Buyer will fully indemnify TI and its representatives against any damages arising out of the use of any TI components in safety-critical applications.

In some cases, TI components may be promoted specifically to facilitate safety-related applications. With such components, TI's goal is to help enable customers to design and create their own end-product solutions that meet applicable functional safety standards and requirements. Nonetheless, such components are subject to these terms.

No TI components are authorized for use in FDA Class III (or similar life-critical medical equipment) unless authorized officers of the parties have executed a special agreement specifically governing such use.

Only those TI components which TI has specifically designated as military grade or "enhanced plastic" are designed and intended for use in military/aerospace applications or environments. Buyer acknowledges and agrees that any military or aerospace use of TI components which have **not** been so designated is solely at the Buyer's risk, and that Buyer is solely responsible for compliance with all legal and regulatory requirements in connection with such use.

TI has specifically designated certain components as meeting ISO/TS16949 requirements, mainly for automotive use. In any case of use of non-designated products, TI will not be responsible for any failure to meet ISO/TS16949.

Products

| | |
|------------------------------|--|
| Audio | www.ti.com/audio |
| Amplifiers | amplifier.ti.com |
| Data Converters | dataconverter.ti.com |
| DLP® Products | www.dlp.com |
| DSP | dsp.ti.com |
| Clocks and Timers | www.ti.com/clocks |
| Interface | interface.ti.com |
| Logic | logic.ti.com |
| Power Mgmt | power.ti.com |
| Microcontrollers | microcontroller.ti.com |
| RFID | www.ti-rfid.com |
| OMAP Applications Processors | www.ti.com/omap |
| Wireless Connectivity | www.ti.com/wirelessconnectivity |

Applications

| | |
|-------------------------------|--|
| Automotive and Transportation | www.ti.com/automotive |
| Communications and Telecom | www.ti.com/communications |
| Computers and Peripherals | www.ti.com/computers |
| Consumer Electronics | www.ti.com/consumer-apps |
| Energy and Lighting | www.ti.com/energy |
| Industrial | www.ti.com/industrial |
| Medical | www.ti.com/medical |
| Security | www.ti.com/security |
| Space, Avionics and Defense | www.ti.com/space-avionics-defense |
| Video and Imaging | www.ti.com/video |

TI E2E Community

e2e.ti.com