

# ***AN-1777 Designing Energy-Efficient Handheld Illumination Solutions***

---

## **ABSTRACT**

Portable battery sources are constantly challenged by the handheld applications' increasing functionality and power demands. By better understanding the applications' energy consumption, designers can produce energy-efficient solutions that will conserve battery life and provide a better end-user experience.

---

## **Contents**

1	Conserving Energy in Portable Displays .....	2
2	Peripheral Lighting .....	3
3	Enabling New Display Technologies .....	5

## **List of Figures**

1	32 Exponential Brightness Levels .....	2
2	LM2756 Typical Application Circuit .....	3
3	LM2755 Typical Application Circuit .....	4
4	LM2755 LED Timing Control .....	4
5	LM4510 Typical Application Circuit .....	5

## 1 Conserving Energy in Portable Displays

Display backlighting presents a significant energy challenge as handheld displays increase in size, resolution, and brightness. A typical small display module can require between three to ten LEDs for proper illumination.

To address the backlit display's energy consumption, one power-efficient method to drive LEDs is the switched capacitor. This technique connects the input voltage to a multiple-gain switched capacitor that produces a regulated output. The output voltage equals the gain multiplied by the input voltage during open loop operation. Closed loop operation enables a fixed output that should be slightly higher than the LED forward voltage and any voltage drop. The difference between output voltage and forward voltage is the headroom that needs to be monitored to ensure current flow. The switched capacitor remains in the most efficient gain over the widest input voltage consuming the least amount of energy through gain transitions that maintain regulation based on LED forward voltage and load requirements. Dual gain boost modes (1x and 3/2x for the LM2755 and LM2756; 2x and 3/2x for the LM2757) allow for the highest possible efficiency over a wide input voltage range resulting in longer battery life.

Consumer trends continue to dictate smaller portable devices, making PCB area much more valuable. The switched capacitor topology offers an added benefit as an inductor-less solution that saves on solution size and bill of materials. The LM2755, LM2756, and LM2757 are examples of switched capacitor boost technology that drive up to 10 LEDs (each driving up to 30 mA of diode current). This smaller solution provides the ability to place the driver in a local area, versus a central area, which reduces EMI.

Programmability of white LEDs is important to control display illumination. For example, when an end-user is having a conversation on a mobile phone, they are no longer interacting with the display, and the display has the option to dim. Both the LM2755 and LM2756 include an I<sup>2</sup>C-compatible interface that controls the display illumination based on handset operation.

Figure 1 shows the 32 exponential dimming step settings with an 800:1 dimming ratio which enables true perceived linear brightness level control and a dimming profile that leads to a smooth on/off display transition. The human eye is a logarithmic detector as it responds to light in terms of equal ratios rather than equal increments. What is recognized to be the linear augmentation of brightness is in reality exponential. By allowing the backlight to be dimmed or turned off, the designer gains flexibility and the ability to save battery life.

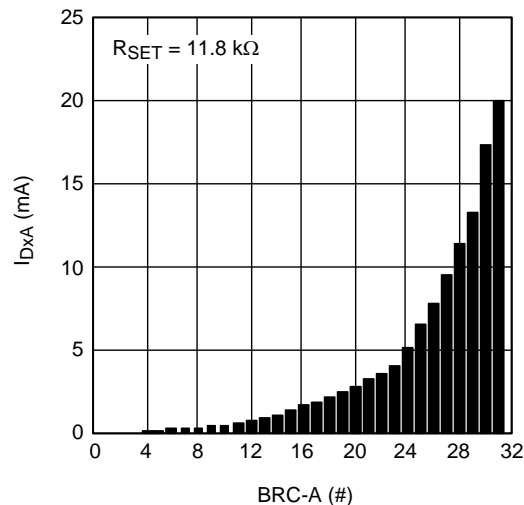


Figure 1. 32 Exponential Brightness Levels

Figure 2 is a typical application circuit of the LM2756. The LM2756 drives 8 LEDs separated in three independently controlled groups for multiple display purposes. The following equation configures the LED current levels:

$$I_{DxA/B/C (A)} = 189 \times (V_{ISET} / R_{SET})$$

With a properly selected resistor ( $R_{SET}$ ) placed between  $I_{SET}$  and GND, the desired level of current can be passed through the LEDs connected to  $DxA$  and  $DxB$ , where  $x$  is a number referring to the particular LED current sink and A, B, and C refers to the particular group of LEDs.

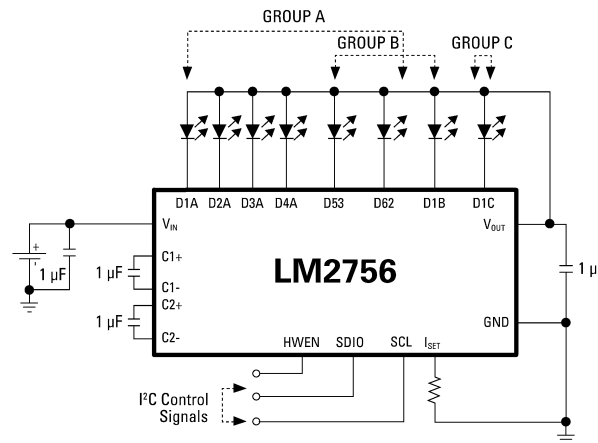


Figure 2. LM2756 Typical Application Circuit

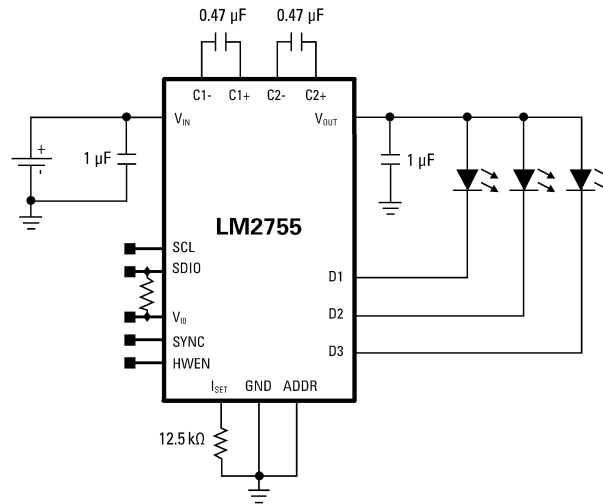
Once the current level is set, analog current scaling internally dims the LEDs using the I<sup>2</sup>C-compatible interface. The 32 exponential analog brightness levels shown in Figure 1 can be configured for the LEDs in Group A, while LEDs in Group B and Group C can handle 8 linear analog brightness levels.

With the ability to separately control several groups of LEDs, a single LED driver can control a main display, a secondary sub display or keypad LEDs, and an indicator LED. The LM2756 integrates these features by incorporating eight current sinks and dividing them into three groups. Four current sinks are comprised in Group A, while Group B and Group C have one current sink each. By manipulating a register, two extra sinks (D53 and D62) are available for either Group A or Group B. This allows 4, 5, or 6 LEDs to be used for the main display, leaving extra LEDs for additional lighting features.

## 2 Peripheral Lighting

Personal mobile devices have greater illumination needs than just the main display. Supplemental LEDs are required for further lighting functions consuming more battery energy. Keypad lighting is an important characteristic of handheld applications that does not require as much LED current matching as current-sourced, boost solution to illuminate keypad LEDs with up to 90% efficiency. Indicator LEDs alert end-users of low battery, battery charging activity, and incoming messages. These LEDs can also be used in fun-lighting applications. With three independent RGB LED outputs, the LM2755 permits programmable blinking patterns, via I<sup>2</sup>C-compatible interface, for each output enabling multiple zone lighting.

For indicator and cosmetic lighting purposes, LEDs usually require a generated pattern. The LM2755, shown in Figure 3, allows the designer to program a trapezoidal dimming waveform to independently control each output. The following equations calculate the durations of the delay, rise, fall, high, and low times shown on the waveform in Figure 4.


**Figure 3. LM2755 Typical Application Circuit**

$T_{STEP} = 50\mu s \times 2^{(N+1)}$  if using the internal clock

or  $T_{STEP} = (1/f_{PWM}) \times 2^{(N+1)}$  if using the external clock  
on the SYNC pin

$t_{rise/fall\ Total} = T_{STEP} \times (n_{high} - n_{low}) \times n_{Trise/fall}$ ,

where  $0 \leq n_{Trise/fall} \leq 255$

$t_{rise\ or\ fall\ Total} = 50\mu s \times (n_{high} - n_{low})$ ,

where  $n_{Trise/fall} = 0$

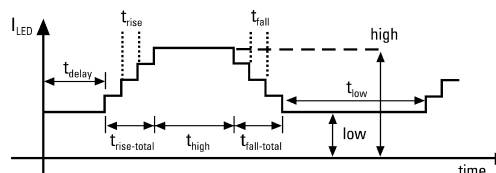
$t_{high\ or\ low} = T_{STEP} \times (n_{high/low} + 1)$ ,

where  $0 \leq n_{Thigh/low} \leq 255$

$t_{delay} = T_{STEP} \times n_{delay}$ ,

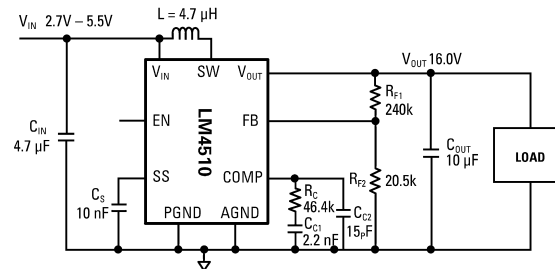
where  $0 \leq n_{delay} \leq 255$

The variables  $n_{Trise}$ ,  $n_{Tfall}$ ,  $n_{Thigh}$ , and  $n_{Tlow}$  are numbers between 0 and 255 while  $n_{high}$  and  $n_{low}$  are selected numbers between 0 and 31 that become the brightness level boundaries when the dimming waveform enable bits are set to '1'. N is a number from 0 to 7 that is stored in the Time Step register. The PWM modulating signal period,  $f_{PWM}$ , is set to a default value of 50  $\mu s$ . If using an external clock, this signal period becomes:  $f_{PWM} = f_{SYNC}/32$ . The custom waveforms only need to be programmed once for each output. After the values have been set, the I<sup>2</sup>C-compatible interface toggles start and stop times for the lighting pattern. Timing control features, like the one found in the LM2755, are an ideal tool for any peripheral lighting needs.


**Figure 4. LM2755 LED Timing Control**

### 3 Enabling New Display Technologies

Efficient power conversion for white LEDs provides diminishing returns. Designing towards organic LED (OLED) displays can solve a designer's energy problems. Normal LCD displays rely on white LED backlighting, while OLED displays rely on each pixel to directly produce light, making colors more vibrant. OLED displays conserve more energy by illuminating the display without a backlight. To do this, every pixel is turned on and off as needed by circuitry controlling each column of pixels. A pixel can contain one diode for monochromatic displays, or three diodes (red, green, and blue) for full-color displays. Unlike LCD display modules, the diodes are embedded within the OLED display module. In the case of Passive Matrix OLED (PMOLED) displays, the power supply is used to pre-charge an entire row of pixels, usually with voltages beyond the normal 5V. The amount of voltage applied depends on the number of pixels in each row or the size of the OLED display panel.



**Figure 5. LM4510 Typical Application Circuit**

Figure 5 shows the LM4510 OLED driver which offers currents between 80 mA and 280 mA, and voltages between 5V and 18V from a Li-Ion battery input. This switching regulator provides a small energy efficient solution by maximizing power efficiency up to 85% and eliminating an external Schottky diode. Smart solutions like the LM4510 pave the way for next generation technologies in portable media devices.

Consumers continue to demand greater media-centric functionality from their portable handheld devices, including high-quality video, audio and other media-rich features, without sacrificing size or battery life. To meet this challenge, designers must develop innovative solutions that conserve energy and deliver the cutting-edge performance and design consumers have grown to expect from their portable handheld devices.

## IMPORTANT NOTICE

Texas Instruments Incorporated and its subsidiaries (TI) reserve the right to make corrections, enhancements, improvements and other changes to its semiconductor products and services per JESD46, latest issue, and to discontinue any product or service per JESD48, latest issue. Buyers should obtain the latest relevant information before placing orders and should verify that such information is current and complete. All semiconductor products (also referred to herein as "components") are sold subject to TI's terms and conditions of sale supplied at the time of order acknowledgment.

TI warrants performance of its components to the specifications applicable at the time of sale, in accordance with the warranty in TI's terms and conditions of sale of semiconductor products. Testing and other quality control techniques are used to the extent TI deems necessary to support this warranty. Except where mandated by applicable law, testing of all parameters of each component is not necessarily performed.

TI assumes no liability for applications assistance or the design of Buyers' products. Buyers are responsible for their products and applications using TI components. To minimize the risks associated with Buyers' products and applications, Buyers should provide adequate design and operating safeguards.

TI does not warrant or represent that any license, either express or implied, is granted under any patent right, copyright, mask work right, or other intellectual property right relating to any combination, machine, or process in which TI components or services are used. Information published by TI regarding third-party products or services does not constitute a license to use such products or services or a warranty or endorsement thereof. Use of such information may require a license from a third party under the patents or other intellectual property of the third party, or a license from TI under the patents or other intellectual property of TI.

Reproduction of significant portions of TI information in TI data books or data sheets is permissible only if reproduction is without alteration and is accompanied by all associated warranties, conditions, limitations, and notices. TI is not responsible or liable for such altered documentation. Information of third parties may be subject to additional restrictions.

Resale of TI components or services with statements different from or beyond the parameters stated by TI for that component or service voids all express and any implied warranties for the associated TI component or service and is an unfair and deceptive business practice. TI is not responsible or liable for any such statements.

Buyer acknowledges and agrees that it is solely responsible for compliance with all legal, regulatory and safety-related requirements concerning its products, and any use of TI components in its applications, notwithstanding any applications-related information or support that may be provided by TI. Buyer represents and agrees that it has all the necessary expertise to create and implement safeguards which anticipate dangerous consequences of failures, monitor failures and their consequences, lessen the likelihood of failures that might cause harm and take appropriate remedial actions. Buyer will fully indemnify TI and its representatives against any damages arising out of the use of any TI components in safety-critical applications.

In some cases, TI components may be promoted specifically to facilitate safety-related applications. With such components, TI's goal is to help enable customers to design and create their own end-product solutions that meet applicable functional safety standards and requirements. Nonetheless, such components are subject to these terms.

No TI components are authorized for use in FDA Class III (or similar life-critical medical equipment) unless authorized officers of the parties have executed a special agreement specifically governing such use.

Only those TI components which TI has specifically designated as military grade or "enhanced plastic" are designed and intended for use in military/aerospace applications or environments. Buyer acknowledges and agrees that any military or aerospace use of TI components which have **not** been so designated is solely at the Buyer's risk, and that Buyer is solely responsible for compliance with all legal and regulatory requirements in connection with such use.

TI has specifically designated certain components as meeting ISO/TS16949 requirements, mainly for automotive use. In any case of use of non-designated products, TI will not be responsible for any failure to meet ISO/TS16949.

### Products

Audio	<a href="http://www.ti.com/audio">www.ti.com/audio</a>
Amplifiers	<a href="http://amplifier.ti.com">amplifier.ti.com</a>
Data Converters	<a href="http://dataconverter.ti.com">dataconverter.ti.com</a>
DLP® Products	<a href="http://www.dlp.com">www.dlp.com</a>
DSP	<a href="http://dsp.ti.com">dsp.ti.com</a>
Clocks and Timers	<a href="http://www.ti.com/clocks">www.ti.com/clocks</a>
Interface	<a href="http://interface.ti.com">interface.ti.com</a>
Logic	<a href="http://logic.ti.com">logic.ti.com</a>
Power Mgmt	<a href="http://power.ti.com">power.ti.com</a>
Microcontrollers	<a href="http://microcontroller.ti.com">microcontroller.ti.com</a>
RFID	<a href="http://www.ti-rfid.com">www.ti-rfid.com</a>
OMAP Applications Processors	<a href="http://www.ti.com/omap">www.ti.com/omap</a>
Wireless Connectivity	<a href="http://www.ti.com/wirelessconnectivity">www.ti.com/wirelessconnectivity</a>

### Applications

Automotive and Transportation	<a href="http://www.ti.com/automotive">www.ti.com/automotive</a>
Communications and Telecom	<a href="http://www.ti.com/communications">www.ti.com/communications</a>
Computers and Peripherals	<a href="http://www.ti.com/computers">www.ti.com/computers</a>
Consumer Electronics	<a href="http://www.ti.com/consumer-apps">www.ti.com/consumer-apps</a>
Energy and Lighting	<a href="http://www.ti.com/energy">www.ti.com/energy</a>
Industrial	<a href="http://www.ti.com/industrial">www.ti.com/industrial</a>
Medical	<a href="http://www.ti.com/medical">www.ti.com/medical</a>
Security	<a href="http://www.ti.com/security">www.ti.com/security</a>
Space, Avionics and Defense	<a href="http://www.ti.com/space-avionics-defense">www.ti.com/space-avionics-defense</a>
Video and Imaging	<a href="http://www.ti.com/video">www.ti.com/video</a>

### TI E2E Community

[e2e.ti.com](http://e2e.ti.com)