

# **AN-74 LM139/LM239/LM339 A Quad of Independently Functioning Comparators**

---

## **ABSTRACT**

This application note discusses the features, design, and uses of the LM139/LM239/LM339 family of devices.

## **Contents**

1	Introduction .....	3
2	Circuit Description .....	3
3	Comparator Circuits .....	5
4	Comparators with Hysteresis .....	6
5	Limit Comparator with Lamp Driver .....	11
6	Zero Crossing Detector .....	11
7	Comparing the Magnitude of Voltages of Opposite Polarity .....	12
8	Magnetic Transducer Amplifier .....	13
9	Oscillators Using the LM139 .....	13
10	Pulse Generator with Variable Duty Cycle .....	14
11	Crystal Controlled Oscillator .....	16
12	MOS Clock Driver .....	16
13	Wide Range VCO .....	16
14	Digital and Switching Circuits .....	19
15	AND/NAND Gates .....	19
16	OR/NOR Gates .....	20
17	Output Strobing .....	21
18	One Shot Multivibrators .....	21
19	Bistable Multivibrator .....	22
20	Time Delay Generator .....	24
21	Low Frequency Operational Amplifiers .....	25
22	Dual Supply Operation .....	27
23	Miscellaneous Applications .....	29
24	Remote Temperature Sensor/Alarm .....	29
25	Four Independently Variable, Temperature Compensated, Reference Supplies .....	30
26	Digital Tape Reader .....	33
27	Pulse Width Modulator .....	33
28	Positive and Negative Peak Detectors .....	35
29	Conclusion .....	35

## **List of Figures**

1	Basic LM139 Input Stage .....	3
2	Basic LM139 Comparator .....	4
3	Complete LM139 Comparator Circuit .....	4
4	Current Source Biasing Circuit .....	5
5	Basic Comparator Circuit .....	5
6	Comparator with Positive Feedback to Improve Switching Time .....	6

All trademarks are the property of their respective owners.

7	Inverting Comparator with Hysteresis .....	8
8	Non-Inverting Comparator with Hysteresis .....	9
9	Limit Comparator with Lamp Driver .....	11
10	Zero Crossing Detector .....	12
11	Comparing the Magnitude of Voltages of Opposite Polarity .....	12
12	Magnetic Transducer Amplifier .....	13
13	Square Wave Generator.....	14
14	Pulse Generator with Variable Duty Cycle .....	15
15	Crystal Controlled Oscillator .....	16
16	MOS Clock Driver .....	17
17	Voltage Controlled Oscillator.....	18
18	Three Input AND Gate .....	19
19	AND Gate with Large Fan-In.....	20
20	Three Input OR Gate.....	20
21	Output Strobing Using a Discrete Transistor .....	21
22	Output Strobing with TTL Gate .....	21
23	One Shot Multivibrator .....	22
24	Multivibrator with Input Lock-Out .....	23
25	Bistable Multivibrator .....	23
26	Typical Output Saturation Characteristics .....	24
27	Time Delay Generator .....	25
28	Non-Inverting Amplifier .....	26
29	Large Signal Frequency Response .....	26
30	Improved Operational Amplifier.....	27
31	Input Offset Null Adjustment .....	27
32	Zero Crossing Detector Using Dual Supplies.....	28
33	Squarewave Generator Using Dual Supplies.....	28
34	Non-Inverting Amplifier Using Dual Supplies .....	29
35	Temperature Alarm.....	30
36	Four Variable Reference Supplies .....	31
37	Zero T.C. Zener.....	32
38	Magnetic Tape Reader with TTL Output .....	33
39	Paper Tape Reader With TTL Output .....	33
40	Pulse Width Modulator.....	34
41	Simplified Circuit For Calculating Trip Points of .....	34
42	Positive Peak Detector.....	35
43	Negative Peak Detector .....	35

## 1 Introduction

The LM139/LM239/LM339 family of devices is a monolithic quad of independently functioning comparators designed to meet the needs for a medium speed, TTL compatible comparator for industrial applications. Since no antisaturation clamps are used on the output such as a Baker clamp or other active circuitry, the output leakage current in the OFF state is typically 0.5 nA. This makes the device ideal for system applications where it is desired to switch a node to ground while leaving it totally unaffected in the OFF state.

Other features include single supply, low voltage operation with an input common mode range from ground up to approximately one volt below  $V_{CC}$ . The output is an uncommitted collector so it may be used with a pull-up resistor and a separate output supply to give switching levels from any voltage up to 36V down to a  $V_{CE\ SAT}$  above ground (approx. 100 mV), sinking currents up to 15 mA. In addition it may be used as a single pole switch to ground, leaving the switched node unaffected while in the OFF state. Power dissipation with all four comparators in the OFF state is typically 4 mW from a single 5V supply (1 mW/comparator).

## 2 Circuit Description

Figure 1 shows the basic input stage of one of the four comparators of the LM139. Transistors  $Q_1$  through  $Q_4$  make up a PNP Darlington differential input stage with  $Q_5$  and  $Q_6$  serving to give single-ended output from differential input with no loss in gain. Any differential input at  $Q_1$  and  $Q_4$  will be amplified causing  $Q_6$  to switch OFF or ON depending on input signal polarity. It can easily be seen that operation with an input common mode voltage of ground is possible. With both inputs at ground potential, the emitters of  $Q_1$  and  $Q_4$  will be at one  $V_{BE}$  above ground and the emitters of  $Q_2$  and  $Q_3$  at  $2 V_{BE}$ . For switching action the base of  $Q_5$  and  $Q_6$  need only go to one  $V_{BE}$  above ground and since  $Q_2$  and  $Q_3$  can operate with zero volts collector to base, enough voltage is present at a zero volt common mode input to insure comparator action. The bases should not be taken more than several hundred millivolts below ground; however, to prevent forward biasing a substrate diode which would stop all comparator action and possibly damage the device, if very large input currents were provided.

Figure 2 shows the comparator with the output stage added. Additional voltage gain is taken through  $Q_7$  and  $Q_8$  with the collector of  $Q_8$  left open to offer a wide variety of possible applications. The addition of a large pull-up resistor from the collector of  $Q_8$  to either  $+V_{CC}$  or any other supply up to 36V both increases the LM139 gain and makes possible output switching levels to match practically any application. Several outputs may be tied together to provide an ORing function or the pull-up resistor may be omitted entirely with the comparator then serving as a SPST switch to ground.

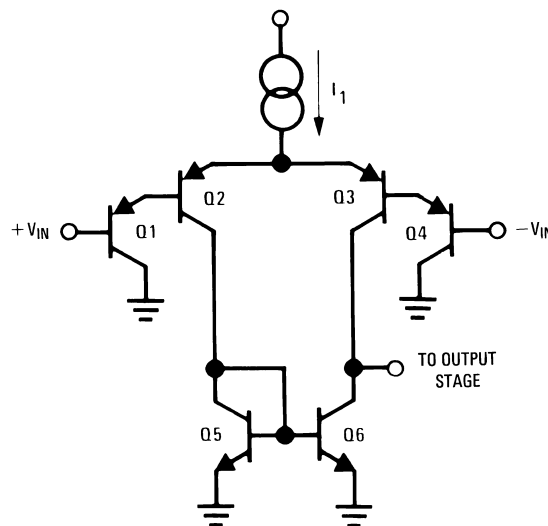
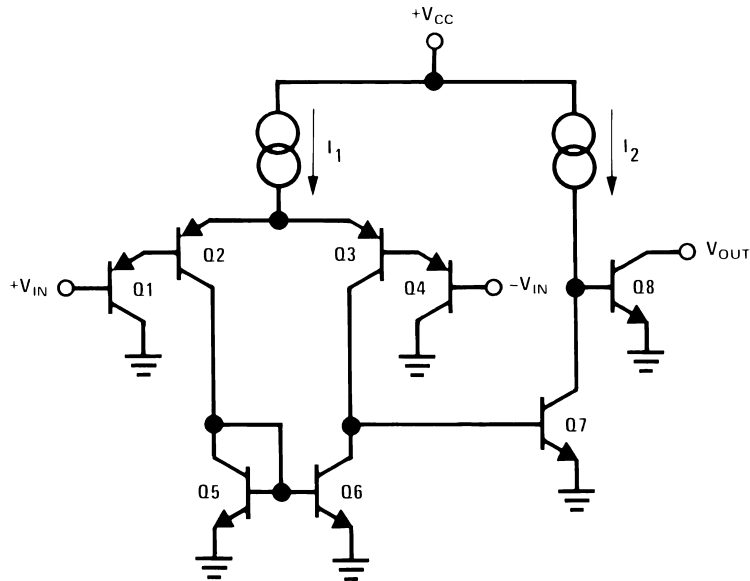
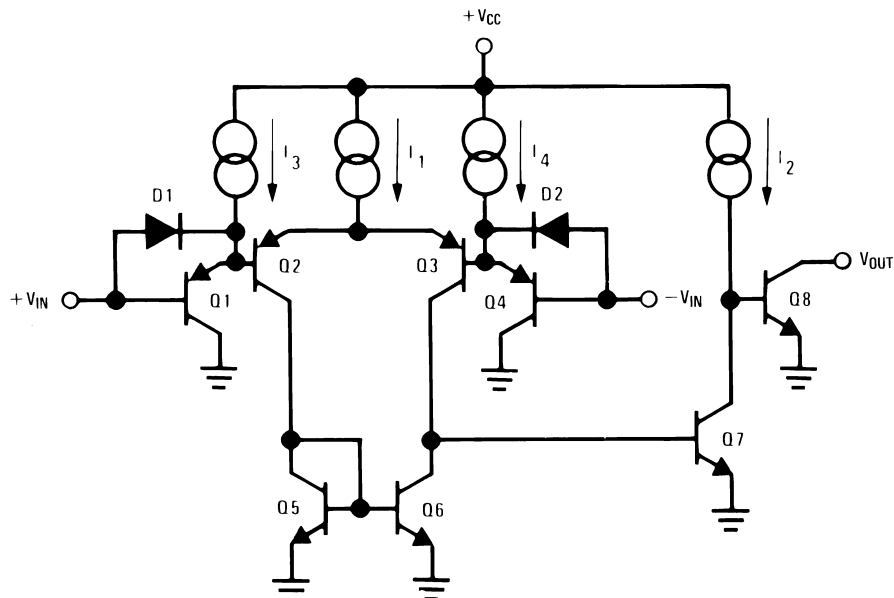


Figure 1. Basic LM139 Input Stage


**Figure 2. Basic LM139 Comparator**

Output transistor  $Q_8$  will sink up to 15 mA before the output ON voltage rises above several hundred millivolts. The output current sink capability may be boosted by the addition of a discrete transistor at the output.

The complete circuit for one comparator of the LM139 is shown in [Figure 3](#). Current sources  $I_3$  and  $I_4$  are added to help charge any parasitic capacitance at the emitters of  $Q_1$  and  $Q_4$  to improve the slew rate of the input stage. Diodes  $D_1$  and  $D_2$  are added to speed up the voltage swing at the emitters of  $Q_1$  and  $Q_2$  for large input voltage swings.


**Figure 3. Complete LM139 Comparator Circuit**

Biasing for current sources  $I_1$  through  $I_4$  is shown in [Figure 4](#). When power is first applied to the circuit, current flows through the JFET  $Q_{13}$  to bias up diode  $D_5$ . This biases transistor  $Q_{12}$  which turns ON transistors  $Q_9$  and  $Q_{10}$  by allowing a path to ground for their base and collector currents.

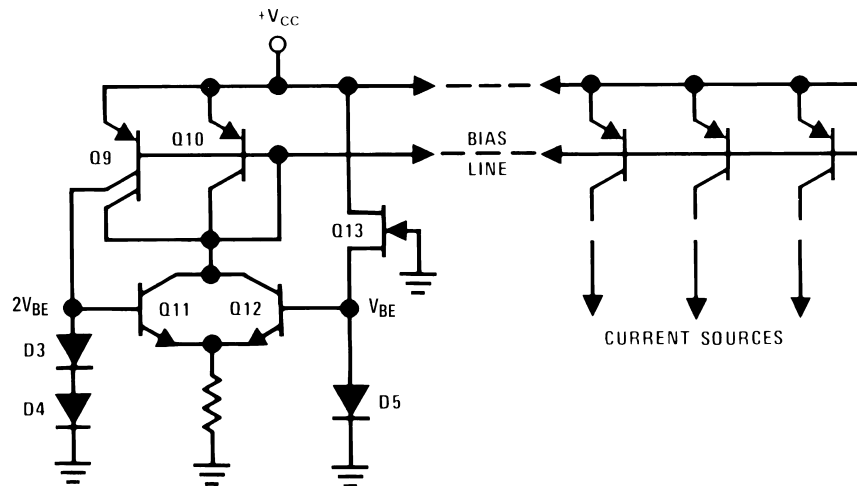


Figure 4. Current Source Biasing Circuit

Current from the left hand collector of  $Q_9$  flows through diodes  $D_3$  and  $D_4$  bringing up the base of  $Q_{11}$  to  $2V_{BE}$  above ground and the emitters of  $Q_{11}$  and  $Q_{12}$  to one  $V_{BE}$ .  $Q_{12}$  will then turn OFF because its base emitter voltage goes to zero. This is the desired action because  $Q_9$  and  $Q_{10}$  are biased ON through  $Q_{11}$ ,  $D_3$  and  $D_4$  so  $Q_{12}$  is no longer needed. The “bias line” is now sitting at a  $V_{BE}$  below  $+V_{CC}$  which is the voltage needed to bias the remaining current sources in the LM139 which will have a constant bias regardless of  $+V_{CC}$  fluctuations. The upper input common mode voltage is  $V_{CC}$  minus the saturation voltage of the current sources (approximately 100 mV) minus the  $2V_{BE}$  of the input devices  $Q_1$  and  $Q_2$  (or  $Q_3$  and  $Q_4$ ).

### 3 Comparator Circuits

Figure 5 shows a basic comparator circuit for converting low level analog signals to a high level digital output. The output pull-up resistor should be chosen high enough so as to avoid excessive power dissipation yet low enough to supply enough drive to switch whatever load circuitry is used on the comparator output. Resistors  $R_1$  and  $R_2$  are used to set the input threshold trip voltage ( $V_{REF}$ ) at any value desired within the input common mode range of the comparator.

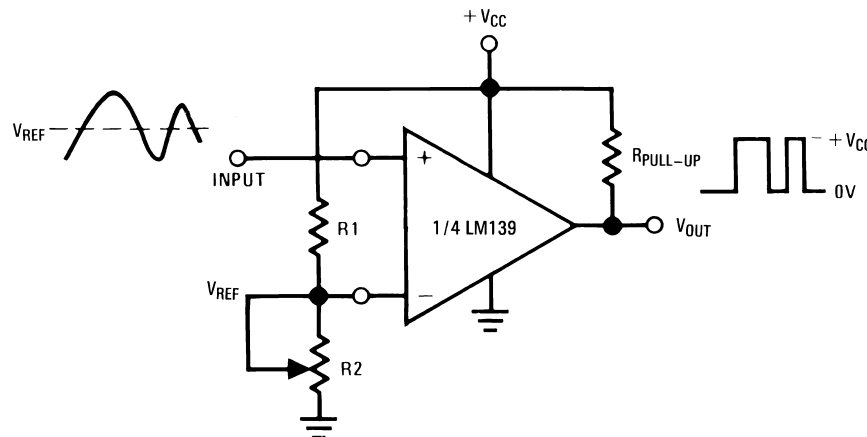


Figure 5. Basic Comparator Circuit

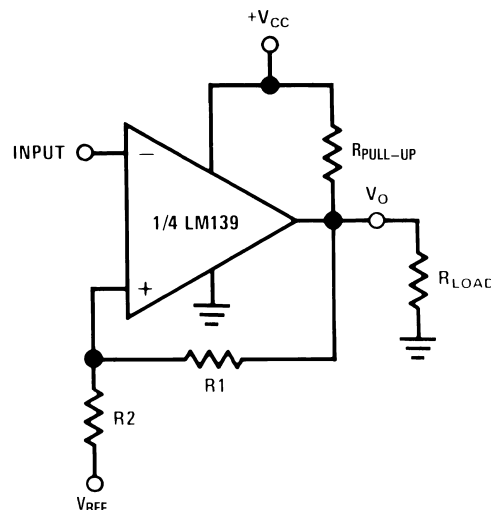
## 4 Comparators with Hysteresis

The circuit shown in Figure 5 suffers from one basic drawback in that if the input signal is a slowly varying low level signal, the comparator may be forced to stay within its linear region between the output high and low states for an undesirable length of time. If this happens, it runs the risk of oscillating since it is basically an uncompensated, high gain op amp. To prevent this, a small amount of positive feedback or hysteresis is added around the comparator. Figure 6 shows a comparator with a small amount of positive feedback. In order to insure proper comparator action, the components should be chosen as follows:

$$R_{\text{PULL-UP}} < R_{\text{LOAD}} \text{ and} \quad (1)$$

$$R_1 > R_{\text{PULL-UP}} \quad (2)$$

This will insure that the comparator will always switch fully up to  $+V_{\text{CC}}$  and not be pulled down by the load or feedback. The amount of feedback is chosen arbitrarily to insure proper switching with the particular type of input signal used. If the output swing is 5V, for example, and it is desired to feedback 1% or 50 mV, then  $R_1 \approx 100 R_2$ . To describe circuit operation, assume that the inverting input goes above the reference input ( $V_{\text{IN}} > V_{\text{REF}}$ ). This will drive the output,  $V_{\text{O}}$ , towards ground which in turn pulls  $V_{\text{REF}}$  down through  $R_1$ . Since  $V_{\text{REF}}$  is actually the noninverting input to the comparator, it too will drive the output towards ground insuring the fastest possible switching time regardless of how slow the input moves. If the input then travels down to  $V_{\text{REF}}$ , the same procedure will occur only in the opposite direction insuring that the output will be driven hard towards  $+V_{\text{CC}}$ .



**Figure 6. Comparator with Positive Feedback to Improve Switching Time**

Putting hysteresis in the feedback loop of the comparator has far more use, however, than simply as an oscillation suppressor. It can be made to function as a Schmitt trigger with presettable trigger points. A typical circuit is shown in Figure 7. Again, the hysteresis is achieved by shifting the reference voltage at the positive input when the output voltage  $V_{\text{O}}$  changes state. This network requires only three resistors and is referenced to the positive supply  $+V_{\text{CC}}$  of the comparator. This can be modeled as a resistive divider,  $R_1$  and  $R_2$ , between  $+V_{\text{CC}}$  and ground with the third resistor,  $R_3$ , alternately connected to  $+V_{\text{CC}}$  or ground, paralleling either  $R_1$  or  $R_2$ . To analyze this circuit, assume that the input voltage,  $V_{\text{IN}}$ , at the inverting input is less than  $V_{\text{A}}$ . With  $V_{\text{IN}} \leq V_{\text{A}}$  the output will be high ( $V_{\text{O}} = +V_{\text{CC}}$ ). The upper input trip voltage,  $V_{\text{A1}}$ , is defined by:

$$V_{\text{A1}} = \frac{+V_{\text{CC}} R_2}{(R_1 \parallel R_3) + R_2} \quad (3)$$

or

$$V_{\text{A1}} = \frac{+V_{\text{CC}} R_2 (R_1 + R_3)}{R_1 R_2 + R_1 R_3 + R_2 R_3} \quad (4)$$

When the input voltage  $V_{\text{IN}}$ , rises above the reference voltage ( $V_{\text{IN}} > V_{\text{A1}}$ ), voltage,  $V_{\text{O}}$ , will go low ( $V_{\text{O}} = \text{GND}$ ). The lower input trip voltage,  $V_{\text{A2}}$ , is now defined by:

$$V_{A2} = \frac{+V_{CC} R_2 \parallel R_3}{R_1 + R_2 \parallel R_3} \quad (5)$$

or

$$V_{A2} = \frac{+V_{CC} R_2 R_3}{R_1 R_2 + R_1 R_3 + R_2 R_3} \quad (6)$$

When the input voltage,  $V_{IN1}$ , decreases to  $V_{A2}$  or lower, the output will again switch high. The total hysteresis,  $\Delta V_A$ , provided by this network is defined by:

$$\Delta V_A = V_{A1} - V_{A2} \quad (7)$$

or, subtracting equation 2 from equation 1

$$\Delta V_A \Delta \frac{+V_{CC} R_1 R_2}{R_1 R_2 + R_1 R_3 + R_2 R_3} \quad (8)$$

To insure that  $V_O$  will swing between  $+V_{CC}$  and ground, choose:

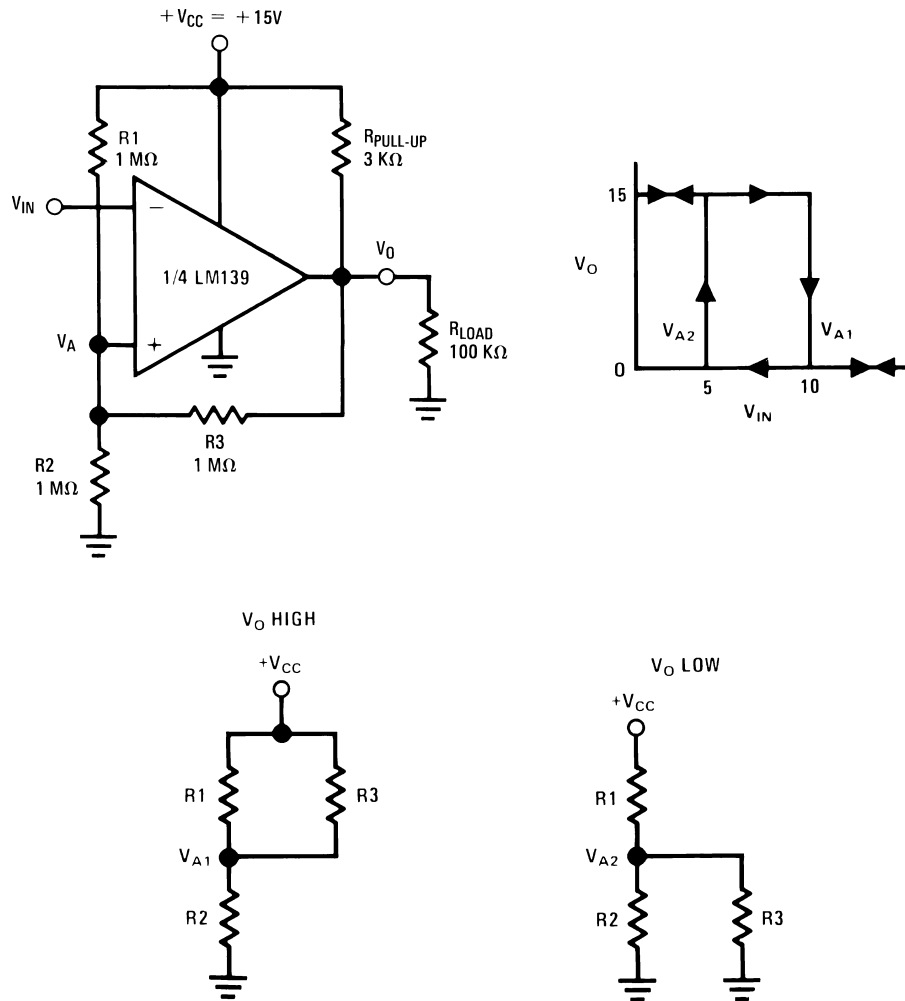
$$R_{PULL-UP} < R_{LOAD} \quad \text{and} \quad (9)$$

$$R_3 > R_{PULL-UP} \quad (10)$$

Heavier loading on  $R_{PULL-UP}$  (i.e. smaller values of  $R_3$  or  $R_{LOAD}$ ) simply reduces the value of the maximum output voltage thereby reducing the amount of hysteresis by lowering the value of  $V_{A1}$ . For simplicity, we have assumed in the above equations that  $V_O$  high switches all the way up to  $+V_{CC}$ .

To find the resistor values needed for a given set of trip points, we first divide equation (3) by equation (2). This gives us the ratio:

$$\frac{\Delta V_A}{V_{A2}} = \frac{1 + \frac{R_1}{R_3} + \frac{R_1}{R_2}}{1 + \frac{R_3}{R_2} + \frac{R_3}{R_1}} \quad (11)$$


**Figure 7. Inverting Comparator with Hysteresis**

If we let  $R_1 = n R_3$ , Equation 11 becomes:

$$\frac{\Delta V_A}{V_{A2}} = n \quad (12)$$

We can then obtain an expression for  $R_2$  from equation (1) which gives

$$R_2 = \frac{R_1 \parallel R_3}{\frac{+V_{CC}}{V_{A1}} - 1} \quad (13)$$

The following design example is offered:

Given:  $V^+ = +15V$

$$R_{LOAD} = 100 \text{ k}\Omega \quad (14)$$

$$V_{A1} = +10V \quad (15)$$

$$V_{A2} = +5V \quad (16)$$

To find:  $R_1, R_2, R_3, R_{PULL-UP}$

Solution:

From equation (4)  $R_{PULL-UP} < R_{LOAD}$

$$R_{PULL-UP} < 100 \text{ k}\Omega \quad (17)$$

so let  $R_{PULL-UP} = 3 \text{ k}\Omega$



From equation (5)  $R_3 > R_{LOAD}$

$$R_3 > 100 \text{ k}\Omega \quad (18)$$

so let  $R_3 = 1 \text{ M}\Omega$

$$\text{From equation (7) } n = \frac{\Delta V_A}{V_{A2}} = \frac{10 - 5}{5} = 1 \quad (19)$$

and since  $R_1 = n R_3$

this gives  $R_1 = 1 R_3 = 1 \text{ M}\Omega$

$$\text{From equation (8) } R_2 = \frac{500 \text{ k}\Omega}{\frac{15}{10} - 1} = 1 \text{ M}\Omega \quad (20)$$

These are the values shown in Figure 7.

The circuit shown in Figure 8 is a non-inverting comparator with hysteresis which is obtained with only two resistors,  $R_1$  and  $R_2$ . In contrast to the first method, however, this circuit requires a separate reference voltage at the negative input. The trip voltage,  $V_A$ , at the positive input is shifted about  $V_{REF}$  as  $V_O$  changes between  $+V_{CC}$  and ground.

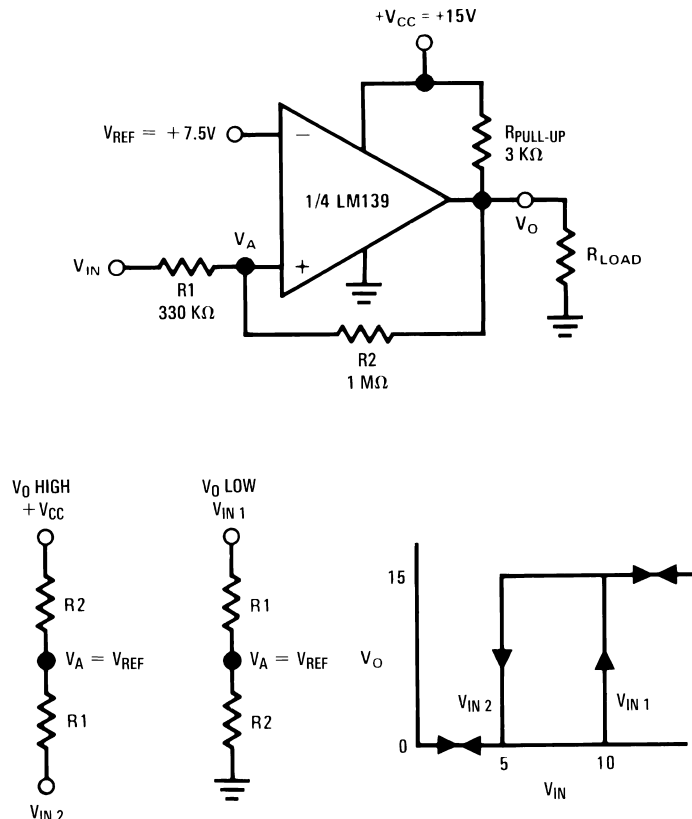


Figure 8. Non-Inverting Comparator with Hysteresis

Again for analysis, assume that the input voltage,  $V_{IN}$ , is low so that the output,  $V_O$ , is also low ( $V_O = \text{GND}$ ). For the output to switch,  $V_{IN}$  must rise up to  $V_{IN 1}$  where  $V_{IN 1}$  is given by:

$$V_{IN 1} = \frac{V_{REF} (R_1 + R_2)}{R_2} \quad (21)$$

As soon as  $V_O$  switches to  $+V_{CC}$ ,  $V_A$  will step to a value greater than  $V_{REF}$  which is given by:

$$V_A = V_{IN} + \frac{(V_{CC} - V_{IN 1}) R_1}{R_1 + R_2} \quad (22)$$

To make the comparator switch back to its low state ( $V_O = \text{GND}$ )  $V_{IN}$  must go below  $V_{REF}$  before  $V_A$  will again equal  $V_{REF}$ . This lower trip point is now given by:

$$V_{IN2} = \frac{V_{REF}(R_1 + R_2) - V_{CC}R_1}{R_2} \quad (23)$$

The hysteresis for this circuit,  $\Delta V_{IN}$ , is the difference between  $V_{IN1}$  and  $V_{IN2}$  and is given by:

$$\begin{aligned} \Delta V_{IN} &= V_{IN1} - V_{IN2} = \\ &= \frac{V_{REF}(R_1 + R_2)}{R_2} - \frac{V_{REF}(R_1 + R_2) - V_{CC}R_1}{R_2} \end{aligned} \quad (24)$$

or

$$\Delta V_{IN} = \frac{V_{CC}R_1}{R_2} \quad (25)$$

As a design example consider the following:

$$\text{Given: } R_{LOAD} = 100 \text{ k}\Omega \quad (26)$$

$$V_{IN1} = 10\text{V} \quad (27)$$

$$V_{IN2} = 5\text{V} \quad (28)$$

$$+V_{CC} = 15\text{V} \quad (29)$$

$$\text{To find: } V_{REF}, R_1, R_2 \text{ and } R_3 \quad (30)$$

Solution:

Again choose  $R_{PULL-UP} < R_{LOAD}$  to minimize loading, so let

$$R_{PULL-UP} = 3 \text{ k}\Omega \quad (31)$$

From equation (12)

$$\begin{aligned} \frac{R_1}{R_2} &= \frac{\Delta V_{IN}}{V_{CC}} \\ \frac{R_1}{R_2} &= \frac{10 - 5}{15} = \frac{1}{3} \\ R_1 &= \frac{R_2}{3} \end{aligned} \quad (32)$$

From equation (9)

$$\begin{aligned} V_{REF} &= \frac{10}{1 + \frac{R_1}{R_2}} \\ V_{REF} &= \frac{V_{IN}}{1 + \frac{1}{3}} = 7.5\text{V} \end{aligned} \quad (33)$$

To minimize output loading choose

$$R_2 > R_{PULL-UP}$$

or  $R_2 > 3 \text{ k}\Omega$

so let  $R_2 = 1 \text{ M}\Omega$

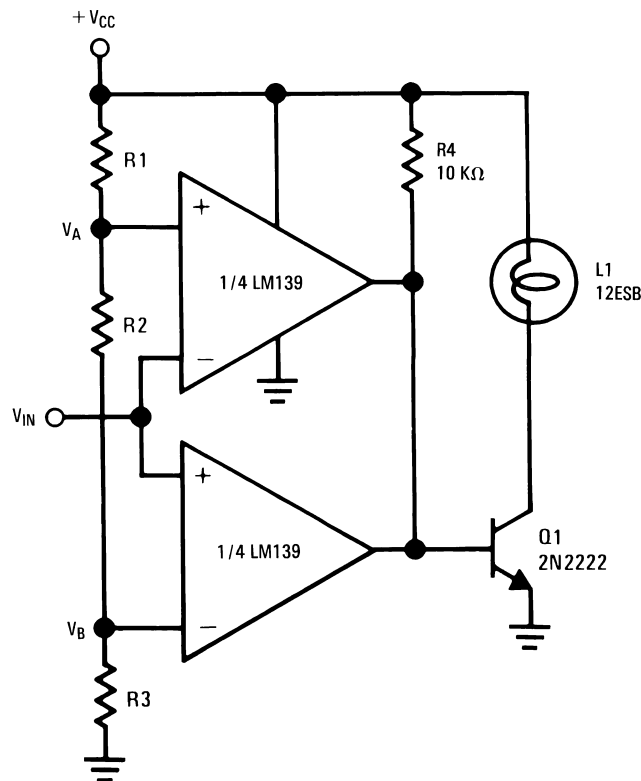
The value of  $R_1$  is now obtained from equation (12)

$$\begin{aligned} R_1 &= \frac{R_2}{3} \\ R_1 &= \frac{1 \text{ M}\Omega}{3} \approx 330 \text{ k}\Omega \end{aligned} \quad (34)$$

These are the values shown in [Figure 8](#).

## 5 Limit Comparator with Lamp Driver

The limit comparator shown in Figure 9 provides a range of input voltages between which the output devices of both LM139 comparators will be OFF.

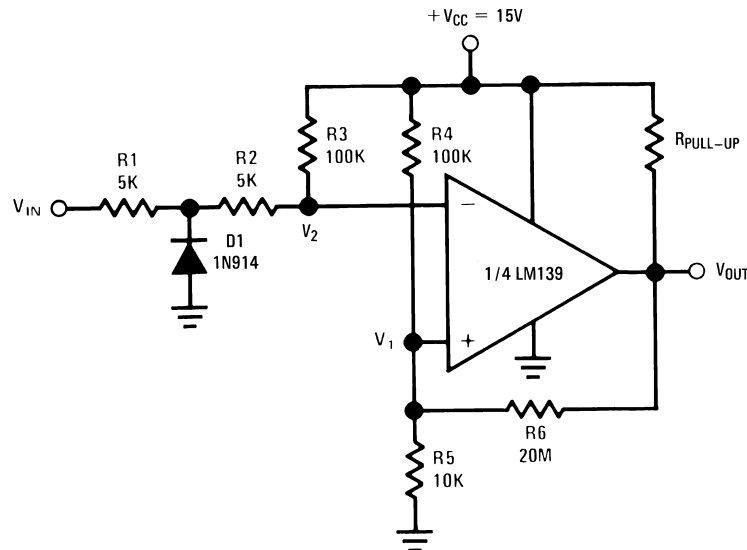


**Figure 9. Limit Comparator with Lamp Driver**

This will allow base current for Q<sub>1</sub> to flow through pull-up resistor R<sub>4</sub>, turning ON Q<sub>1</sub> which lights the lamp. If the input voltage, V<sub>IN</sub>, changes to a value greater than V<sub>A</sub> or less than V<sub>B</sub>, one of the comparators will switch ON, shorting the base of Q<sub>1</sub> to ground, causing the lamp to go OFF. If a PNP transistor is substituted for Q<sub>1</sub> (with emitter tied to +V<sub>CC</sub>) the lamp will light when the input is above V<sub>A</sub> or below V<sub>B</sub>. V<sub>A</sub> and V<sub>B</sub> are arbitrarily set by varying resistors R<sub>1</sub>, R<sub>2</sub> and R<sub>3</sub>.

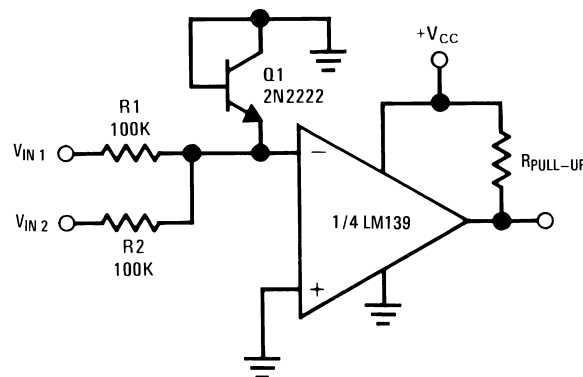
## 6 Zero Crossing Detector

The LM139 can be used to symmetrically square up a sine wave centered around zero volts by incorporating a small amount of positive feedback to improve switching times and centering the input threshold at ground (see Figure 10). Voltage divider R<sub>4</sub> and R<sub>5</sub> establishes a reference voltage, V<sub>1</sub>, at the positive input. By making the series resistance, R<sub>1</sub> plus R<sub>2</sub> equal to R<sub>5</sub>, the switching condition, V<sub>1</sub> = V<sub>2</sub>, will be satisfied when V<sub>IN</sub> = 0. The positive feedback resistor, R<sub>6</sub>, is made very large with respect to R<sub>5</sub> (R<sub>6</sub> = 2000 R<sub>5</sub>). The resultant hysteresis established by this network is very small ( $\Delta V_1 < 10$  mV) but it is sufficient to insure rapid output voltage transitions. Diode D<sub>1</sub> is used to insure that the inverting input terminal of the comparator never goes below approximately -100 mV. As the input terminal goes negative, D<sub>1</sub> will forward bias, clamping the node between R<sub>1</sub> and R<sub>2</sub> to approximately -700 mV. This sets up a voltage divider with R<sub>2</sub> and R<sub>3</sub> preventing V<sub>2</sub> from going below ground. The maximum negative input overdrive is limited by the current handling ability of D<sub>1</sub>.


**Figure 10. Zero Crossing Detector**

## 7 Comparing the Magnitude of Voltages of Opposite Polarity

The comparator circuit shown in [Figure 11](#) compares the magnitude of two voltages,  $V_{IN1}$  and  $V_{IN2}$  which have opposite polarities. The resultant input voltage at the minus input terminal to the comparator,  $V_A$ , is a function of the voltage divider from  $V_{IN1}$  and  $V_{IN2}$  and the values of  $R_1$  and  $R_2$ . Diode connected transistor  $Q_1$  provides protection for the minus input terminal by clamping it at several hundred millivolts below ground. A 2N2222 was chosen over a 1N914 diode because of its lower diode voltage. If desired, a small amount of hysteresis may be added using the techniques described previously. Correct magnitude comparison can be seen as follows: Let  $V_{IN1}$  be the input for the positive polarity input voltage and  $V_{IN2}$  the input for the negative polarity. If the magnitude of  $V_{IN1}$  is greater than that of  $V_{IN2}$  the output will go low ( $V_{OUT} = GND$ ). If the magnitude of  $V_{IN1}$  is less than that of  $V_{IN2}$ , however, the output will go high ( $V_{OUT} = V_{CC}$ ).


**Figure 11. Comparing the Magnitude of Voltages of Opposite Polarity**

## 8 Magnetic Transducer Amplifier

A circuit that will detect the zero crossings in the output of a magnetic transducer is shown in Figure 12. Resistor divider,  $R_1$  and  $R_2$ , biases the positive input at  $+V_{CC}/2$ , which is well within the common mode operating range. The minus input is biased through the magnetic transducer. This allows large signal swings to be handled without exceeding the input voltage limits. A symmetrical square wave output is insured through the positive feedback resistor  $R_3$ . Resistors  $R_1$  and  $R_2$  can be used to set the DC bias voltage at the positive input at any desired voltage within the input common mode voltage range of the comparator.

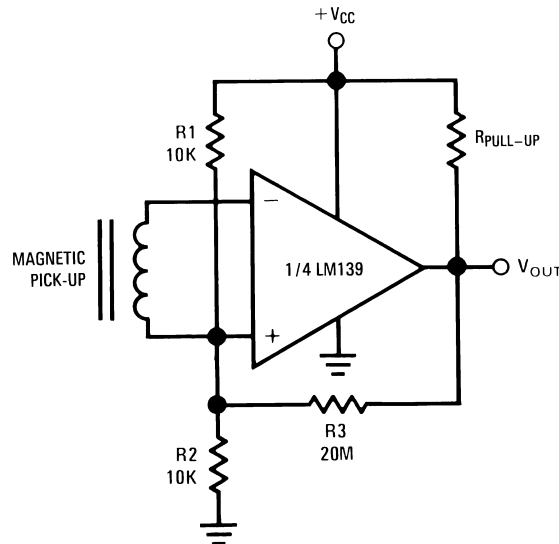


Figure 12. Magnetic Transducer Amplifier

## 9 Oscillators Using the LM139

The LM139 lends itself well to oscillator applications for frequencies below several megacycles. Figure 13 shows a symmetrical square wave generator using a minimum of components. The output frequency is set by the RC time constant of  $R_4$  and  $C_1$  and the total hysteresis of the loop is set by  $R_1$ ,  $R_2$  and  $R_3$ . The maximum frequency is limited only by the large signal propagation delay of the comparator in addition to any capacitive loading at the output which would degrade the output slew rate.

To analyze this circuit assume that the output is initially high. For this to be true, the voltage at the negative input must be less than the voltage at the positive input. Therefore, capacitor  $C_1$  is discharged. The voltage at the positive input,  $V_{A1}$ , will then be given by:

$$V_{A1} = \frac{+V_{CC} R_2}{R_2 + (R_1 \parallel R_3)} \quad (35)$$

where if  $R_1 = R_2 = R_3$

then

$$V_{A1} = \frac{2 V_{CC}}{3} \quad (36)$$

Capacitor  $C_1$  will charge up through  $R_4$  so that when it has charged up to a value equal to  $V_{A1}$ , the comparator output will switch. With the output  $V_O = \text{GND}$ , the value of  $V_A$  is reduced by the hysteresis network to a value given by:

$$V_{A2} = \frac{+V_{CC}}{3} \quad (37)$$

using the same resistor values as before. Capacitor  $C_1$  must now discharge through  $R_4$  towards ground. The output will return to its high state ( $V_O = +V_{CC}$ ) when the voltage across the capacitor has discharged to a value equal to  $V_{A2}$ . For the circuit shown, the period for one cycle of oscillation will be twice the time it takes for a single RC circuit to charge up to one half of its final value. The period can be calculated from:

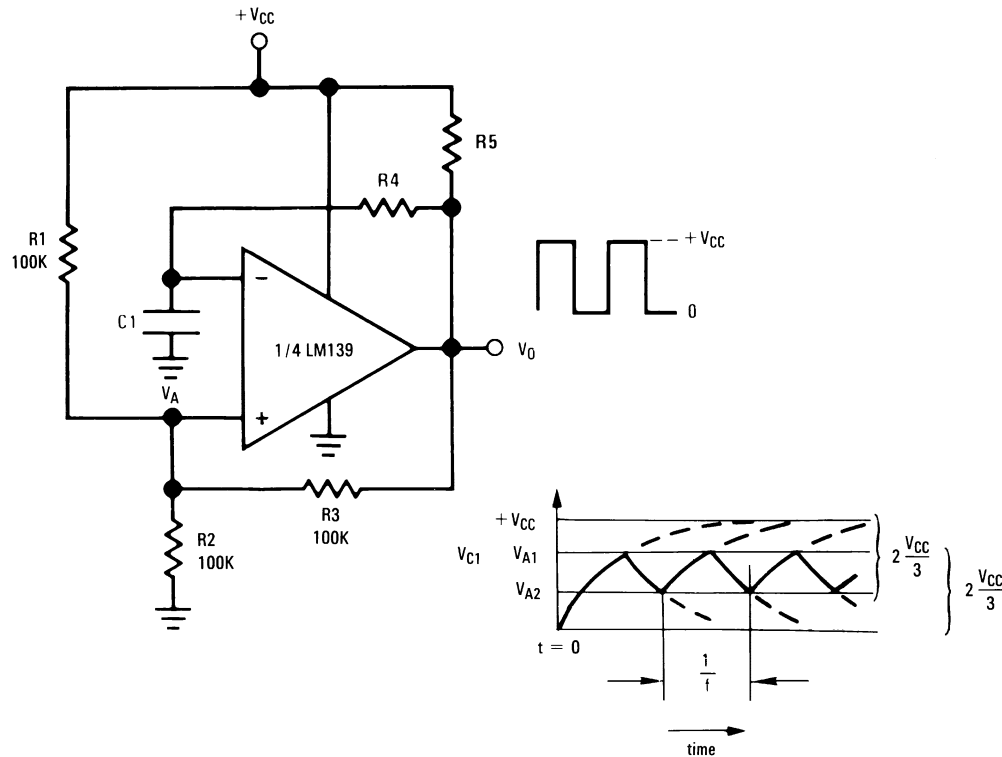
$$V_1 = V_{MAX} e^{-t_1/RC} \quad (38)$$

where

$$V_{MAX} = \frac{2 V_{CC}}{3} \quad (39)$$

and

$$V_1 = \frac{V_{MAX}}{2} = \frac{V_{CC}}{3} \quad (40)$$



**Figure 13. Square Wave Generator**

One period will be given by:

$$\frac{1}{\text{freq.}} = 2t_1 \quad (41)$$

or calculating the exponential gives

$$\frac{1}{\text{freq.}} = 2(0.694) R_4 C_1 \quad (42)$$

Resistors  $R_3$  and  $R_4$  must be at least 10 times larger than  $R_5$  to insure that  $V_O$  will go all the way up to  $+V_{CC}$  in the high state. The frequency stability of this circuit should strictly be a function of the external components.

## 10 Pulse Generator with Variable Duty Cycle

The basic square wave generator of [Figure 13](#) can be modified to obtain an adjustable duty cycle pulse generator, as shown in [Figure 14](#), by providing a separate charge and discharge path for capacitor  $C_1$ . One path, through  $R_4$  and  $D_1$  will charge the capacitor and set the pulse width ( $t_1$ ). The other path,  $R_5$  and  $D_2$ , will discharge the capacitor and set the time between pulses ( $t_2$ ). By varying resistor  $R_5$ , the time between pulses of the generator can be changed without changing the pulse width. Similarly, by varying  $R_4$ , the pulse width will be altered without affecting the time between pulses. Both controls will change the frequency of the generator, however. With the values given in [Figure 14](#), the pulse width and time between pulses can be found from:

$$V_1 = V_{MAX} (1 - e^{-t_1/R_4 C_1}) \text{ risetime} \quad (43)$$

$$V_1 = V_{MAX} e^{-t_2/R_5 C_1} \text{ falltime} \quad (44)$$

where

$$V_{MAX} = \frac{2 V_{CC}}{3} \quad (45)$$

and

$$V_1 = \frac{V_{MAX}}{2} = \frac{V_{CC}}{3} \quad (46)$$

which gives

$$\frac{1}{2} = e^{-t_1/R_4 C_1} \quad (47)$$

$t_2$  is then given by:

$$\frac{1}{2} = e^{-t_2/R_5 C_1} \quad (48)$$

These terms will have a slight error due to the fact that  $V_{MAX}$  is not exactly equal to  $\frac{2}{3} V_{CC}$  but is actually reduced by the diode drop to:

$$V_{MAX} = \frac{2}{3} (V_{CC} - V_{BE}) \quad (49)$$

therefore

$$\frac{1}{2(1 - V_{BE})} = e^{-t_1/R_4 C_1} \quad (50)$$

and

$$\frac{1}{2(1 - V_{BE})} = e^{-t_2/R_5 C_1} \quad (51)$$

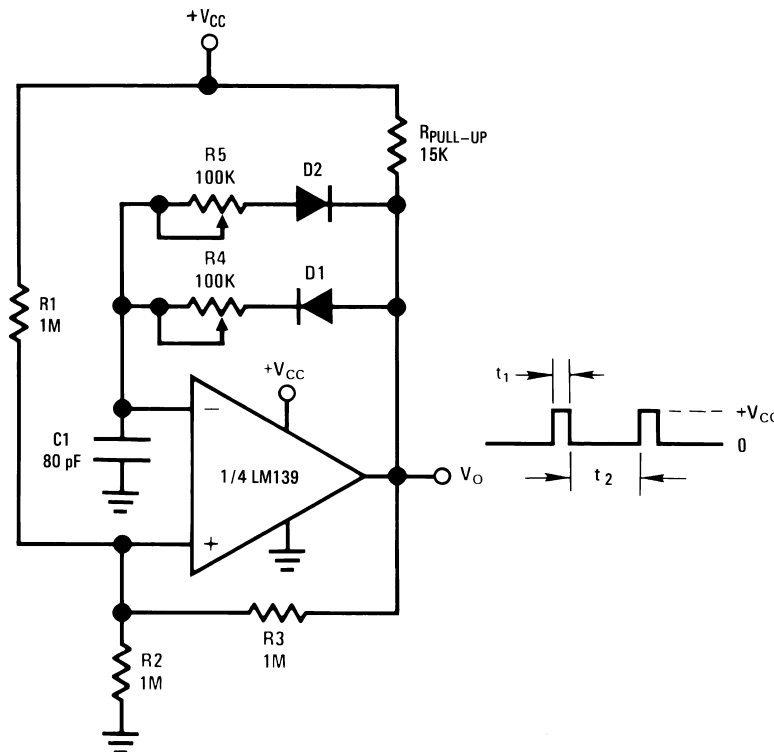


Figure 14. Pulse Generator with Variable Duty Cycle

## 11 Crystal Controlled Oscillator

A simple yet very stable oscillator can be obtained by using a quartz crystal resonator as the feedback element. Figure 15 gives a typical circuit diagram of this. This value of  $R_1$  and  $R_2$  are equal so that the comparator will switch symmetrically about  $+V_{CC}/2$ . The RC time constant of  $R_3$  and  $C_1$  is set to be several times greater than the period of the oscillating frequency, insuring a 50% duty cycle by maintaining a DC voltage at the inverting input equal to the absolute average of the output waveform.

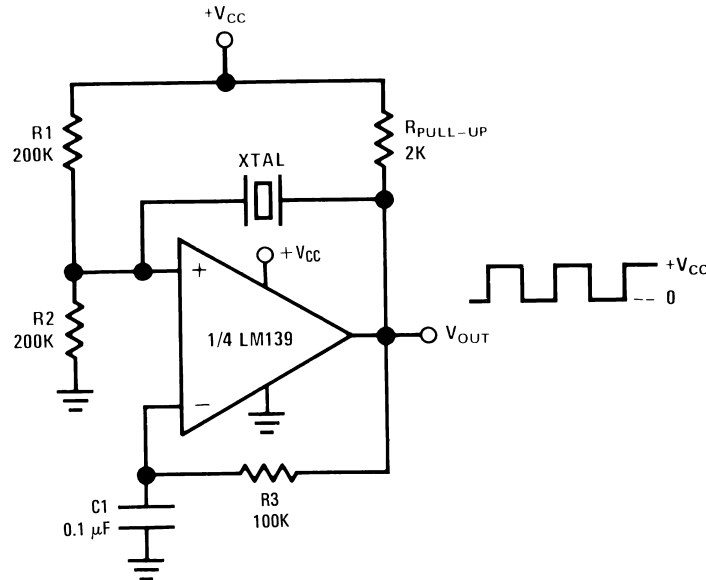


Figure 15. Crystal Controlled Oscillator

When specifying the crystal, be sure to order series resonant along with the desired temperature coefficient and load capacitance to be used.

## 12 MOS Clock Driver

The LM139 can be used to provide the oscillator and clock delay timing for a two phase MOS clock driver (see Figure 16). The oscillator is a standard comparator square wave generator similar to the one shown in Figure 13. Two other comparators of the LM139 are used to establish the desired phasing between the two outputs to the clock driver. A more detailed explanation of the delay circuit is given in the section under "Digital and Switching Circuits."

## 13 Wide Range VCO

A simple yet very stable voltage controlled oscillator using a minimum of external components can be realized using three comparators of the LM139. The schematic is shown in Figure 17a. Comparator 1 is used closed loop as an integrator (for further discussion of closed loop operation see section on Operational Amplifiers) with comparator 2 used as a triangle to square wave converter and comparator 3 as the switch driving the integrator. To analyze the circuit, assume that comparator 2 is its high state ( $V_{SQ} = +V_{CC}$ ) which drives comparator 3 to its high state also. The output device of comparator 3 will be OFF which prevents any current from flowing through  $R_2$  to ground. With a control voltage,  $V_C$ , at the input to comparator 1, a current  $I_1$  will flow through  $R_1$  and begin discharging capacitor  $C_1$ , at a linear rate. This discharge current is given by:

$$I_1 = \frac{V_C}{2R_1} \quad (52)$$

and the discharge time is given by:

$$I_1 = C_1 \frac{\Delta V}{\Delta t} \quad (53)$$



$\Delta V$  will be the maximum peak change in the voltage across capacitor  $C_1$  which will be set by the switch points of comparator 2. These trip points can be changed by simply altering the ratio of  $R_F$  to  $R_S$ , thereby increasing or decreasing the amount of hysteresis around comparator 2. With  $R_F = 100 \text{ k}\Omega$  and  $R_S = 5 \text{ k}\Omega$ , the amount of hysteresis is approximately  $\pm 5\%$  which will give switch points of  $+V_{CC}/2 \pm 750 \text{ mV}$  from a 30V supply. (See "Comparators with Hysteresis").

As capacitor  $C_1$  discharges, the output voltage of comparator 1 will decrease until it reaches the lower trip point of comparator 2, which will then force the output of comparator 2 to go to its low state ( $V_{SQ} = \text{GND}$ ).

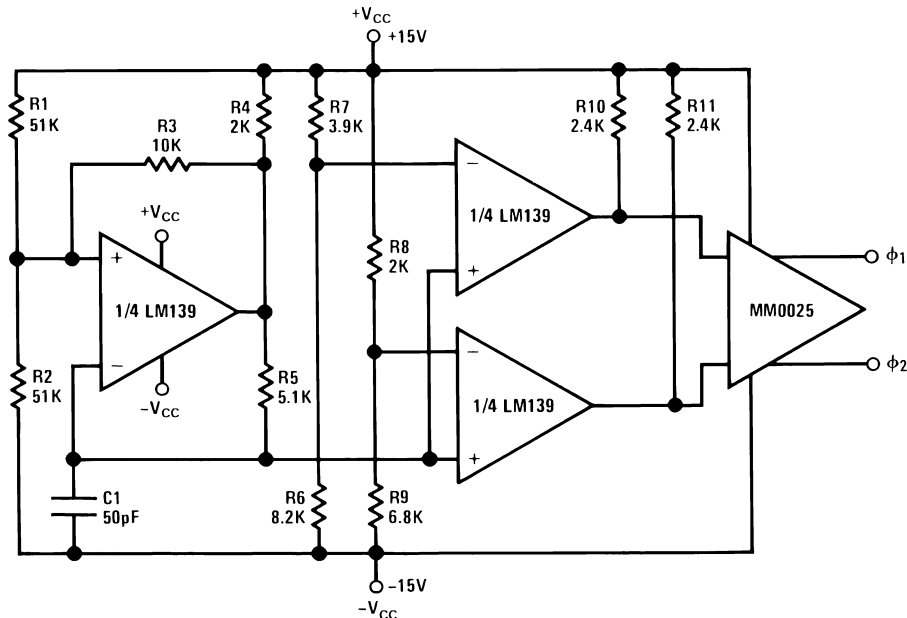
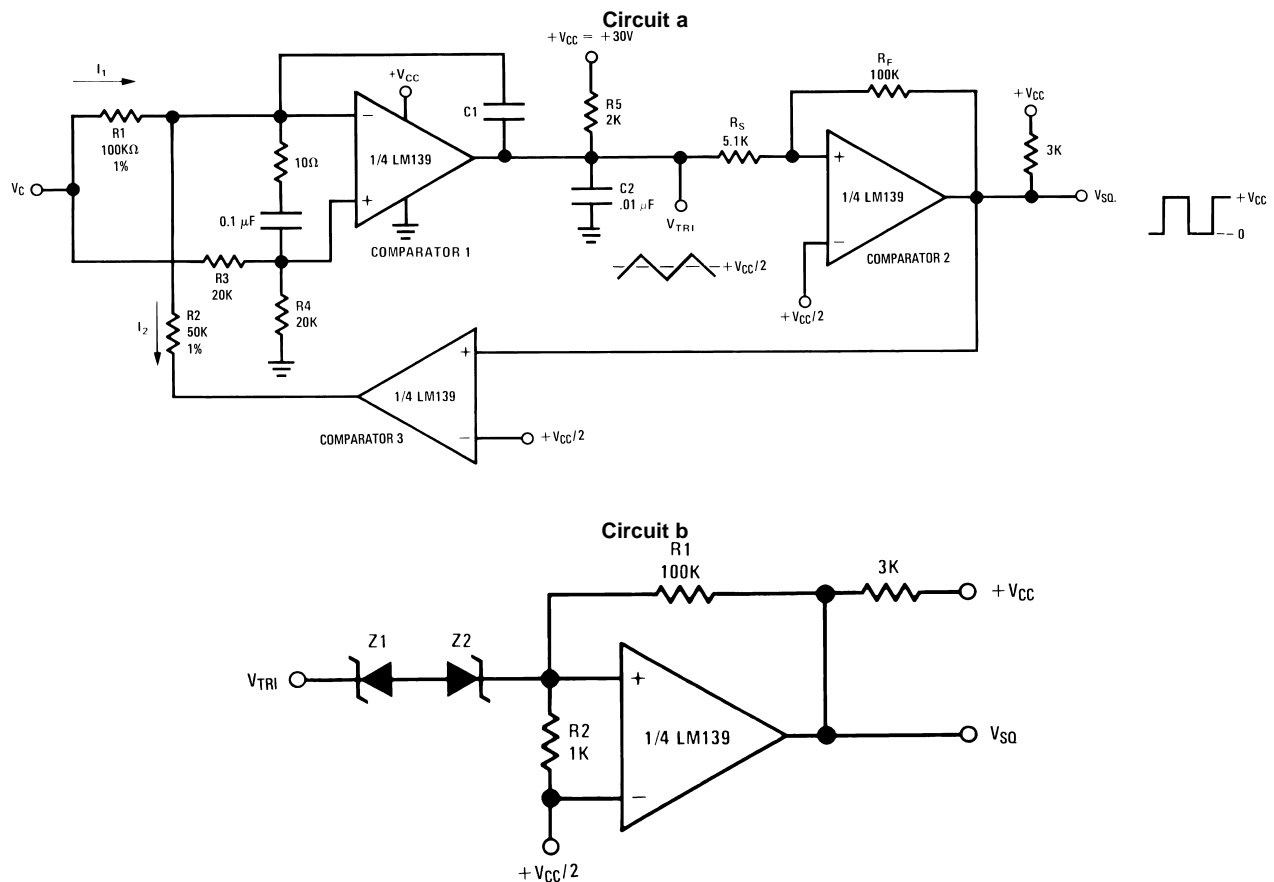


Figure 16. MOS Clock Driver


**Figure 17. Voltage Controlled Oscillator**

This in turn causes comparator 3 to go to its low state where its output device will be in saturation. A current  $I_2$  can now flow through resistor  $R_2$  to ground. If the value of  $R_2$  is chosen as  $R_1/2$  a current equal to the capacitor discharge current can be made to flow out of  $C_1$ , charging it at the same rate as it was discharged. By making  $R_2 = R_1/2$ , current  $I_2$  will equal twice  $I_1$ . This is the control circuitry which guarantees a constant 50% duty cycle oscillation independent of frequency or temperature. As capacitor  $C_1$  charges, the output of comparator 1 will ramp up until it trips comparator 2 to its high state ( $V_{SQ} = +V_{CC}$ ) and the cycle will repeat.

The circuit shown in [Figure 17a](#) uses a +30V supply and gives a triangle wave of 1.5V peak-to-peak. With a timing capacitor,  $C_1$  equal to 500 pF, a frequency range from approximately 115 kHz down to approximately 670 Hz was obtained with a control voltage ranging from 50V down to 250 mV. By reducing the hysteresis around comparator 2 down to  $\pm 150$  mV ( $R_f = 100$  k $\Omega$ ,  $R_s = 1$  k $\Omega$ ) and reducing the compensating capacitor  $C_2$  down to .001  $\mu$ F, frequencies up to 1 MHz may be obtained. For lower frequencies ( $f_o \leq 1$  Hz) the timing capacitor,  $C_1$ , should be increased up to approximately 1  $\mu$ F to insure that the charging currents,  $I_1$  and  $I_2$ , are much larger than the input bias currents of comparator 1.

[Figure 17b](#) shows another interesting approach to provide the hysteresis for comparator 2. Two identical Zener diodes,  $Z_1$  and  $Z_2$ , are used to set the trip points of comparator 2. When the triangle wave is less than the value required to zener one of the diodes, the resistive network,  $R_1$  and  $R_2$ , provides enough feedback to keep the comparator in its proper state, (the input would otherwise be floating). The advantage of this circuit is that the trip points of comparator 2 will be completely independent of supply voltage fluctuations. The disadvantage is that Zeners with less than one volt breakdown voltage are not obtainable. This limits the maximum upper frequency obtainable because of the larger amplitude of the triangle wave. If a regulated supply is available, [Figure 17a](#) is preferable simply because of less parts count and lower cost.

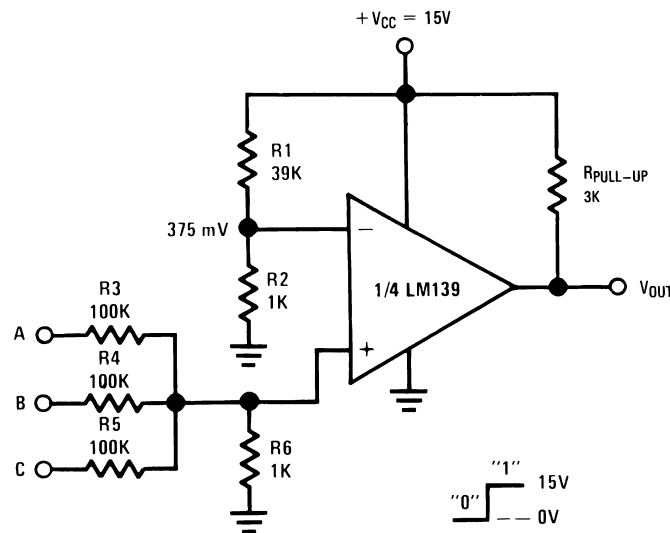
Both circuits provide good control over at least two decades in frequency with a temperature coefficient largely dependent on the TC of the external timing resistors and capacitors. Remember that good circuit layout is essential along with the 0.01  $\mu\text{F}$  compensation capacitor at the output of comparator 1 and the series 10 $\Omega$  resistor and 0.1  $\mu\text{F}$  capacitor between its inputs, for proper operation. Comparator 1 is a high gain amplifier used closed loop as an integrator so long leads and loose layout should be avoided.

## 14 Digital and Switching Circuits

The LM139 lends itself well to low speed (<1 MHz) high level logic circuits. They have the advantage of operating with high signal levels, giving high noise immunity, which is highly desirable for industrial applications. The output signal level can be selected by setting the  $V_{CC}$  to which the pull-up resistor is connected to any desired level.

## 15 AND/NAND Gates

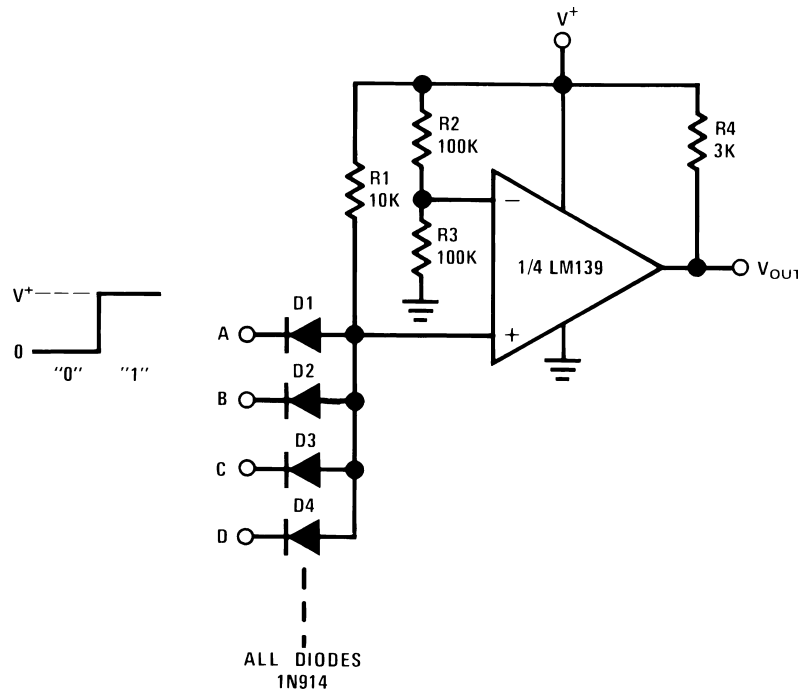
A three input AND gate is shown in Figure 18. Operation of this gate is as follows: resistor divider  $R_1$  and  $R_2$  establishes a reference voltage at the inverting input to the comparator. The non-inverting input is the sum of the voltages at the inputs divided by the voltage dividers comprised of  $R_3$ ,  $R_4$ ,  $R_5$  and  $R_6$ . The output will go high only when all three inputs are high, causing the voltage at the non-inverting input to go above that at inverting input. The circuit values shown work for a "0" equal to ground and a "1" equal +15V. The resistor values can be altered if different logic levels are desired. If more inputs are required, diodes are recommended to improve the voltage margin when all but one of the inputs are the "1" state. This circuit with increased fan-in is shown in Figure 19.



$$V_{OUT} = A \cdot B \cdot C$$

Figure 18. Three Input AND Gate

To convert these AND gates to NAND gates simply interchange the inverting and non-inverting inputs to the comparator. Hysteresis can be added to speed up output transitions if low speed input signals are used.

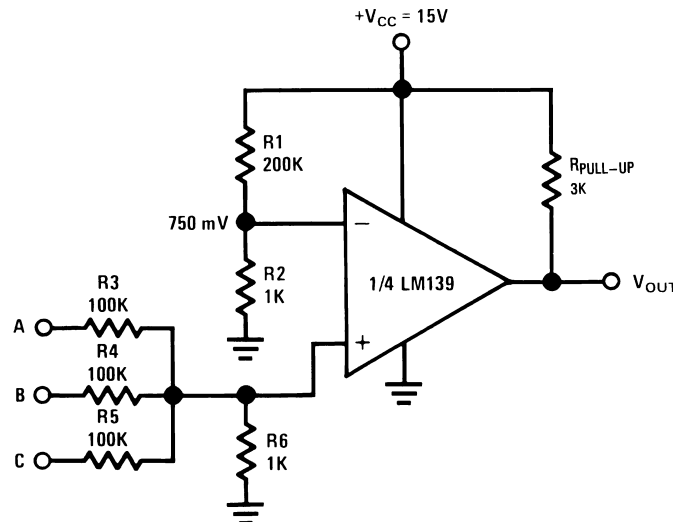


$$V_{OUT} = A \cdot B \cdot C \cdot D$$

Figure 19. AND Gate with Large Fan-In

## 16 OR/NOR Gates

The three input OR gate (positive logic) shown in Figure 20 is achieved from the basic AND gate simply by increasing  $R_1$  thereby reducing the reference voltage. A logic "1" at any of the inputs will produce a logic "1" at the output. Again a NOR gate may be implemented by simply reversing the comparator inputs. Resistor  $R_6$  may be added for the OR or NOR function at the expense of noise immunity if so desired.



$$V_{OUT} = A + B + C$$

Figure 20. Three Input OR Gate

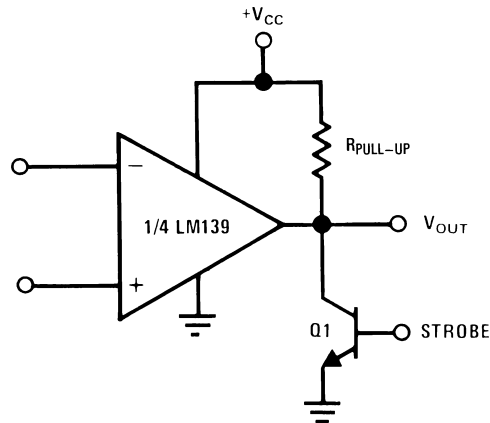


Figure 21. Output Strobing Using a Discrete Transistor

## 17 Output Strobing

The output of the LM139 may be disabled by adding a clamp transistor as shown in Figure 21. A strobe control voltage at the base of  $Q_1$  will clamp the comparator output to ground, making it immune to any input changes.

If the LM139 is being used in a digital system the output may be strobed using any other type of gate having an uncommitted collector output (such as TI's DM5401/DM7401). In addition another comparator of the LM139 could also be used for output strobing, replacing  $Q_1$  in Figure 21, if desired. (See Figure 22.)

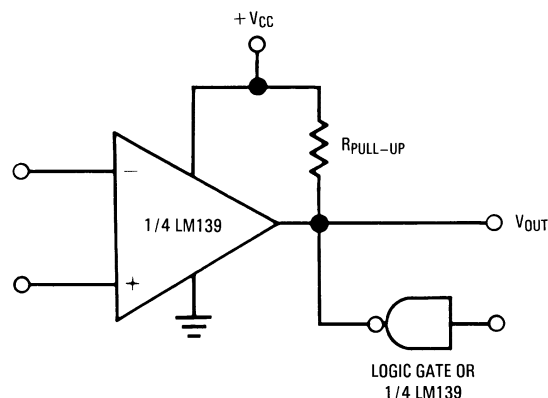
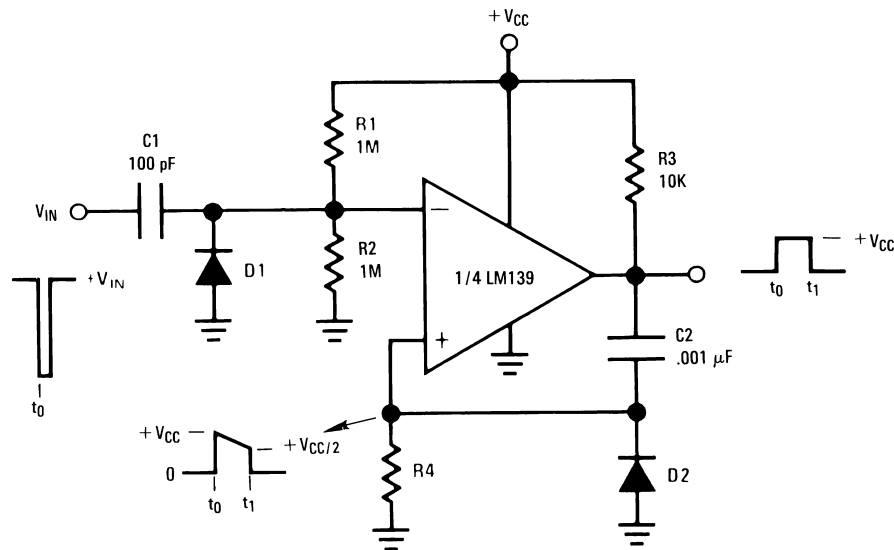


Figure 22. Output Strobing with TTL Gate

## 18 One Shot Multivibrators

A simple one shot multivibrator can be realized using one comparator of the LM139 as shown in Figure 23. The output pulse width is set by the values of  $C_2$  and  $R_4$  (with  $R_4 > 10 R_3$  to avoid loading the output). The magnitude of the input trigger pulse required is determined by the resistive divider  $R_1$  and  $R_2$ . Temperature stability can be achieved by balancing the temperature coefficients of  $R_4$  and  $C_2$  or by using components with very low TC. In addition, the TC of resistors  $R_1$  and  $R_2$  should be matched so as to maintain a fixed reference voltage of  $+V_{CC}/2$ . Diode  $D_2$  provides a rapid discharge path for capacitor  $C_2$  to reset the one shot at the end of its pulse. It also prevents the non-inverting input from being driven below ground. The output pulse width is relatively independent of the magnitude of the supply voltage and will change less than 2% for a five volt change in  $+V_{CC}$ .


**Figure 23. One Shot Multivibrator**

The one shot multivibrator shown in [Figure 24](#) has several characteristics which make it superior to that shown in [Figure 23](#). First, the pulse width is independent of the magnitude of the power supply voltage because the charging voltage and the intercept voltage are a fixed percentage of  $+V_{CC}$ . In addition this one-shot is capable of 99% duty cycle and exhibits input trigger lock-out to insure that the circuit will not re-trigger before the output pulse has been completed. The trigger level is the voltage required at the input to raise the voltage at point A higher than the voltage at point B, and is set by the resistive divider  $R_1$  and  $R_{10}$  and the network  $R_1$ ,  $R_2$  and  $R_3$ . When the multivibrator has been triggered, the output of comparator 2 is high causing the reference voltage at the non-inverting input of comparator 1 to go to  $+V_{CC}$ . This prevents any additional input pulses from disturbing the circuit until the output pulse has been completed.

The value of the timing capacitor,  $C_1$ , must be kept small enough to allow comparator 1 to completely discharge  $C_1$  before the feedback signal from comparator 2 (through  $R_{10}$ ) switches comparator 1 OFF and allows  $C_1$  to start an exponential charge. Proper circuit action depends on rapidly discharging  $C_1$  to a value set by  $R_6$  and  $R_9$  at which time comparator 2 latches comparator 1 OFF. Prior to the establishment of this OFF state,  $C_1$  will have been completely discharged by comparator 1 in the ON state. The time delay, which sets the output pulse width, results from  $C_1$  recharging to the reference voltage set by  $R_6$  and  $R_9$ . When the voltage across  $C_1$  charges beyond this reference, the output pulse returns to ground and the input is again reset to accept a trigger.

## 19 Bistable Multivibrator

[Figure 25](#) is the circuit of one comparator of the LM139 used as a bistable multivibrator. A reference voltage is provided at the inverting input by a voltage divider comprised of  $R_2$  and  $R_3$ . A pulse applied to the SET terminal will switch the output high. Resistor divider network  $R_1$ ,  $R_4$ , and  $R_5$  now clamps the non-inverting input to a voltage greater than the reference voltage. A pulse now applied to the RESET Input will pull the output low. If both Q and  $\bar{Q}$  outputs are needed, another comparator can be added as shown dashed in [Figure 25](#).

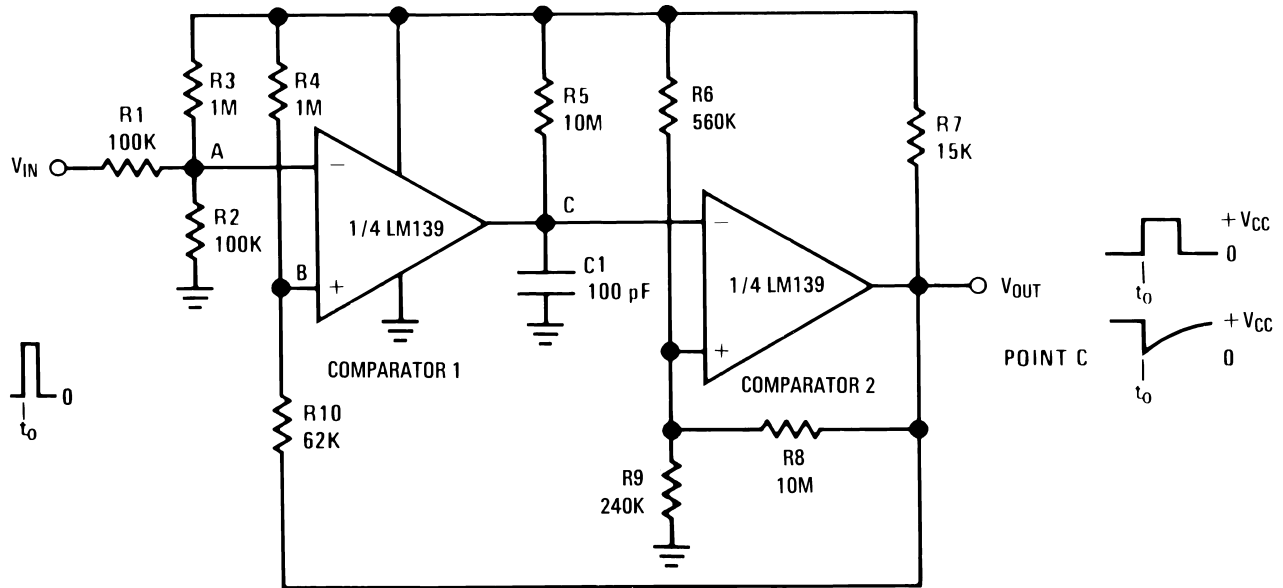


Figure 24. Multivibrator with Input Lock-Out

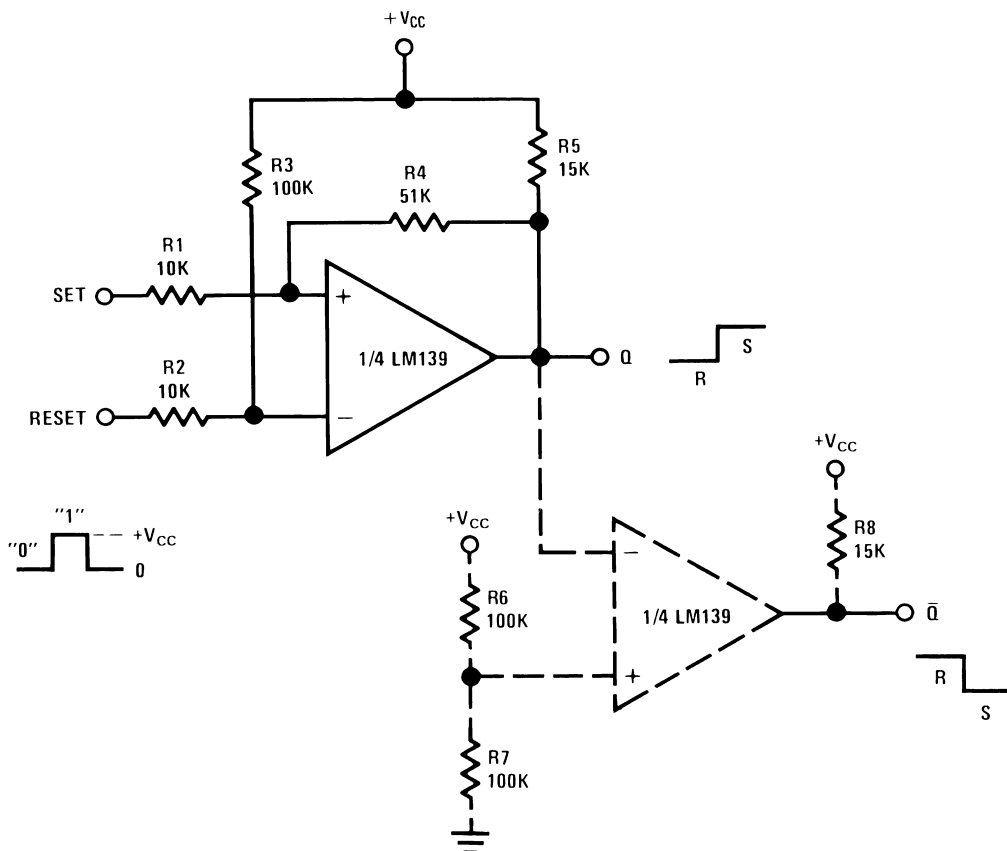


Figure 25. Bistable Multivibrator

Figure 26 shows the output saturation voltage of the LM139 comparator versus the amount of current being passed to ground. The end point of 1 mV at zero current along with an  $R_{SAT}$  of  $60\Omega$  shows why the LM139 so easily adapts itself to oscillator and digital switching circuits by allowing the DC output voltage to go practically to ground while in the ON state.

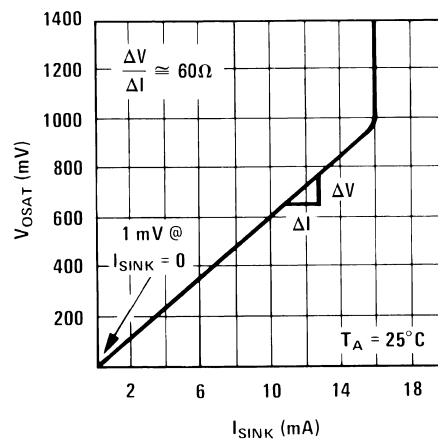


Figure 26. Typical Output Saturation Characteristics

## 20 Time Delay Generator

The final circuit to be presented “Digital and Switching Circuits” is a time delay generator (or sequence generator) as shown in Figure 27.

This timer will provide output signals at prescribed time intervals from a time reference  $t_0$  and will automatically reset when the input signal returns to ground. For circuit evaluation, first consider the quiescent state ( $V_{IN} = 0$ ) where the output of comparator 4 is ON which keeps the voltage across  $C_1$  at zero volts. This keeps the outputs of comparators 1, 2 and 3 in their ON state ( $V_{OUT} = GND$ ). When an input signal is applied, comparator 4 turns OFF allowing  $C_1$  to charge at an exponential rate through  $R_1$ . As this voltage rises past the present trip points  $V_A$ ,  $V_B$ , and  $V_C$  of comparators 1, 2 and 3 respectively, the output voltage of each of these comparators will switch to the high state ( $V_{OUT} = +V_{CC}$ ). A small amount of hysteresis has been provided to insure fast switching for the case where the  $R_C$  time constant has been chosen large to give long delay times. It is not necessary that all comparator outputs be low in the quiescent state. Several or all may be reversed as desired simply by reversing the inverting and non-inverting input connections. Hysteresis again is optional.



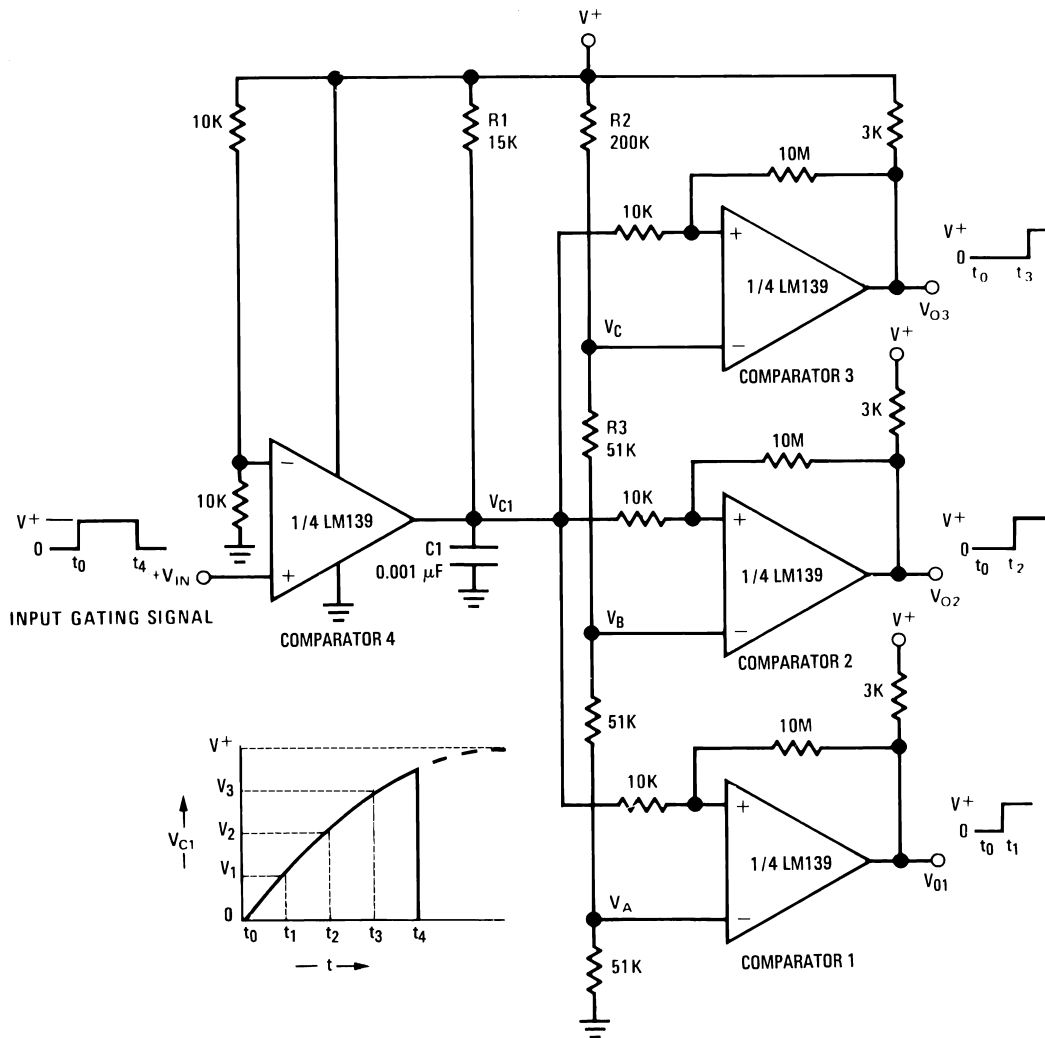
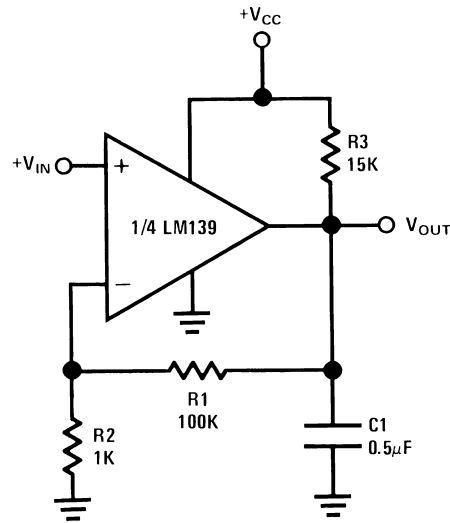


Figure 27. Time Delay Generator

## 21 Low Frequency Operational Amplifiers

The LM139 comparator can be used as an operational amplifier in DC and very low frequency AC applications ( $\leq 100$  Hz). An interesting combination is to use one of the comparators as an op amp to provide a DC reference voltage for the other three comparators in the same package.

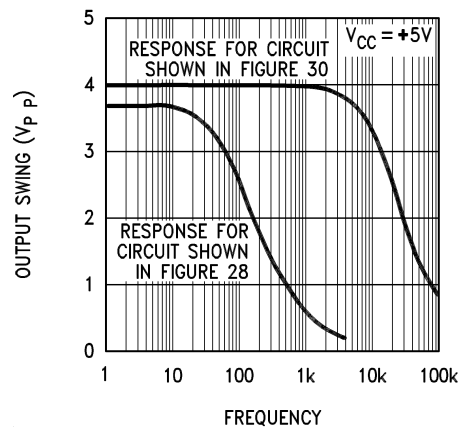
Another useful application of an LM139 has the interesting feature that the input common mode voltage range includes ground even though the amplifier is biased from a single supply and ground. These op amps are also low power drain devices and will not drive large load currents unless current is boosted with an external NPN transistor. The largest application limitation comes from a relatively slow slew rate which restricts the power bandwidth and the output voltage response time.



$$A_v = 1 + \frac{R_1}{R_2} = 101$$

**Figure 28. Non-Inverting Amplifier**

The LM139, like other comparators, is not internally frequency compensated and does not have internal provisions for compensation by external components. Therefore, compensation must be applied at either the inputs or output of the device. Figure 28 shows an output compensation scheme which utilizes the output collector pull-up resistor working with a single compensation capacitor to form a dominant pole. The feedback network,  $R_1$  and  $R_2$  sets the closed loop gain at  $1 + R_1/R_2$  or 101 (40 dB). Figure 29 shows the output swing limitations versus frequency. The output current capability of this amplifier is limited by the relatively large pull-up resistor (15 k $\Omega$ ) so the output is shown boosted with an external NPN transistor in Figure 30. The frequency response is greatly extended by the use of the new compensation scheme also shown in Figure 30. The DC level shift due to the  $V_{BE}$  of  $Q_1$  allows the output voltage to swing from ground to approximately one volt less than  $+V_{CC}$ . A voltage offset adjustment can be added as shown in Figure 31.


**Figure 29. Large Signal Frequency Response**

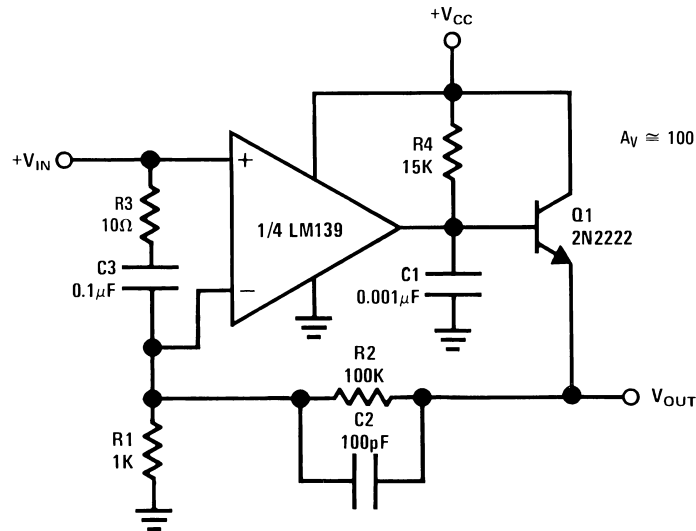
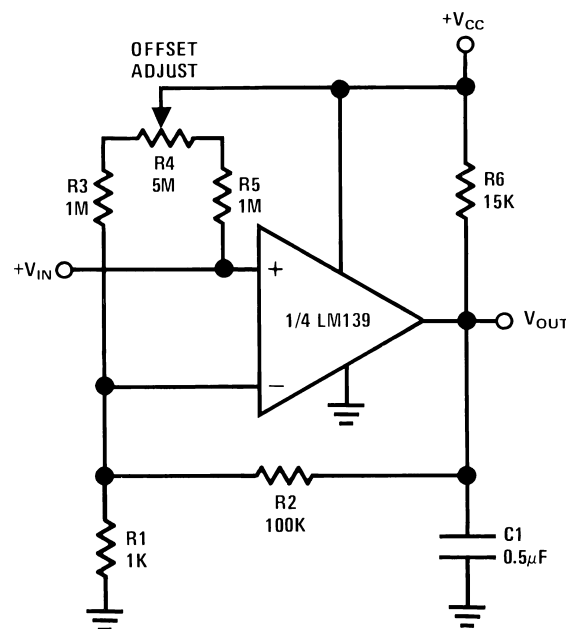


Figure 30. Improved Operational Amplifier



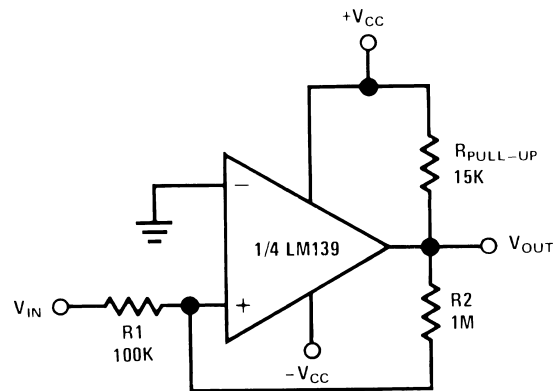
$A_v \approx 100$

Figure 31. Input Offset Null Adjustment

## 22 Dual Supply Operation

The applications presented here have been shown biased typically between  $+V_{CC}$  and ground for simplicity. The LM139, however, works equally well from dual (plus and minus) supplies commonly used with most industry standard op amps and comparators, with some applications actually requiring fewer parts than the single supply equivalent.

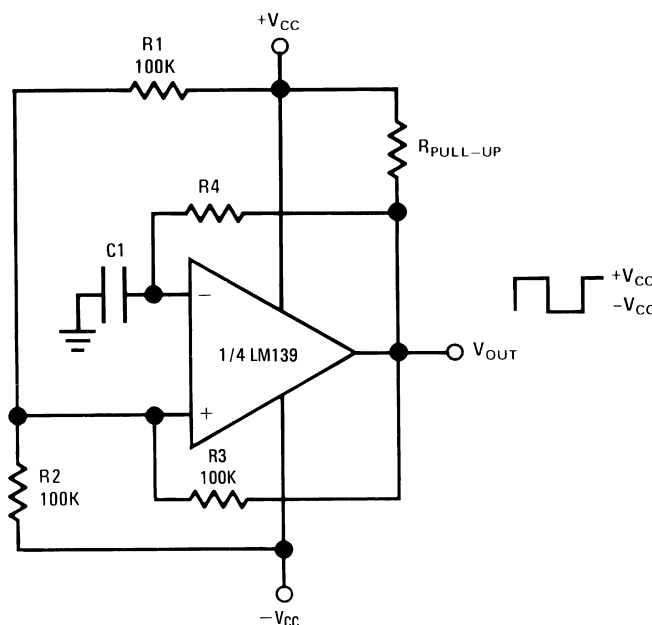
The zero crossing detector shown in [Figure 10](#) can be implemented with fewer parts as shown in [Figure 32](#). Hysteresis has been added to insure fast transitions if used with slowly moving input signals. It may be omitted if not needed, bringing the total parts count down to one pull-up resistor.



**Figure 32. Zero Crossing Detector Using Dual Supplies**

The MOS clock driver shown in [Figure 16](#) uses dual supplies to properly drive the MM0025 clock driver.

The square wave generator shown in [Figure 13](#) can be used with dual supplies giving an output that swings symmetrically above and below ground (see [Figure 33](#)). Operation is identical to the single supply oscillator with only change being in the lower trip point.



**Figure 33. Squarewave Generator Using Dual Supplies**

[Figure 34](#) shows an LM139 connected as an op amp using dual supplies. Biasing is actually simpler if full output swing at low gain settings is required by biasing the inverting input from ground rather than from a resistive divider to some voltage between  $+V_{CC}$  and ground.

All the applications shown will work equally well biased with dual supplies. If the total voltage across the device is increased from that shown, the output pull-up resistor should be increased to prevent the output transistor from being pulled out of saturation by drawing excessive current, thereby preventing the output low state from going all the way to  $-V_{CC}$ .

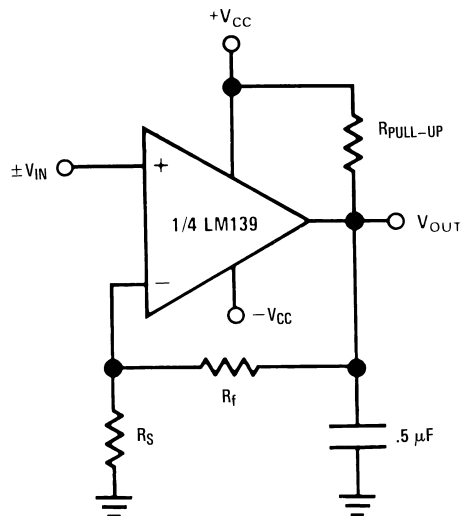


Figure 34. Non-Inverting Amplifier Using Dual Supplies

## 23 Miscellaneous Applications

The following is a collection of various applications intended primarily to further show the wide versatility that the LM139 quad comparator has to offer. No new modes of operation are presented here so all of the previous formulas and circuit descriptions will hold true. It is hoped that all of the circuits presented in this application note will suggest to the user a few of the many areas in which the LM139 can be utilized.

## 24 Remote Temperature Sensor/Alarm

The circuit shown in [Figure 35](#) shows a temperature over-range limit sensor. The 2N930 is a TI process 07 silicon NPN transistor connected to produce a voltage reference equal to a multiple of its base emitter voltage along with temperature coefficient equal to a multiple of 2.2 mV/°C.

That multiple is determined by the ratio of  $R_1$  to  $R_2$ . The theory of operation is as follows: with transistor  $Q_1$  biased up, its base to emitter voltage will appear across resistor  $R_1$ . Assuming a reasonably high beta ( $\beta \geq 100$ ) the base current can be neglected so that the current that flows through resistor  $R_1$  must also be flowing through  $R_2$ . The voltage drop across resistor  $R_2$  will be given by:

$$I_{R1} = I_{R2} \quad (54)$$

and

$$V_{R1} = V_{be} = I_{R1} R_1 \quad (55)$$

so

$$V_{R2} = I_{R2} R_2 = I_{R1} R_2 = V_{be} \frac{R_2}{R_1} \quad (56)$$

As stated previously this base-emitter voltage is strongly temperature dependent, minus 2.2 mV/°C for a silicon transistor. This temperature coefficient is also multiplied by the resistor ratio  $R_1/R_2$ .

This provides a highly linear, variable temperature coefficient reference which is ideal for use as a temperature sensor over a temperature range of approximately -65°C to +150°C. When this temperature sensor is connected as shown in [Figure 35](#) it can be used to indicate an alarm condition of either too high or too low a temperature excursion. Resistors  $R_3$  and  $R_4$  set the trip point reference voltage,  $V_B$ , with switching occurring when  $V_A = V_B$ . Resistor  $R_5$  is used to bias up  $Q_1$  at some low value of current simply to keep quiescent power dissipation to a minimum. An  $I_Q$  near 10  $\mu$ A is acceptable.

Using one LM139, four separate sense points are available. The outputs of the four comparators can be used to indicate four separate alarm conditions or the outputs can be OR'ed together to indicate an alarm condition at any one of the sensors. For the circuit shown the output will go HIGH when the temperature of the sensor goes above the preset level. This could easily be inverted by simply reversing the input leads. For operation over a narrow temperature range, the resistor ratio  $R_2/R_1$  should be large to make the alarm more sensitive to temperature variations. To vary the trip points a potentiometer can be substituted for  $R_3$  and  $R_4$ . By the addition of a single feedback resistor to the non-inverting input to provide a slight amount of hysteresis, the sensor could function as a thermostat. For driving loads greater than 15 mA, an output current booster transistor could be used.

## 25 Four Independently Variable, Temperature Compensated, Reference Supplies

The circuit shown in [Figure 36](#) provides four independently variable voltages that could be used for low current supplies for powering additional equipment or for generating the reference voltages needed in some of the previous comparator applications. If the proper Zener diode is chosen, these four voltages will have a near zero temperature coefficient. For industry standard Zeners, this will be somewhere between 5.0 and 5.4V at a Zener current of approximately 10 mA. An alternative solution is offered to reduce this 50 mW quiescent power drain. Experimental data has shown that any of National's process 21 transistors which have been selected for low reverse beta ( $\beta_R < .25$ ) can be used quite satisfactorily as a zero T.C. Zener. When connected as shown in [Figure 37](#), the T.C. of the base-emitter Zener voltage is exactly cancelled by the T.C. of the forward biased base-collector junction if biased at 1.5 mA. The diode can be properly biased from any supply by adjusting  $R_S$  to set  $I_q$  equal to 1.5 mA. The outputs of any of the reference supplies can be current boosted by using the circuit shown in [Figure 30](#).

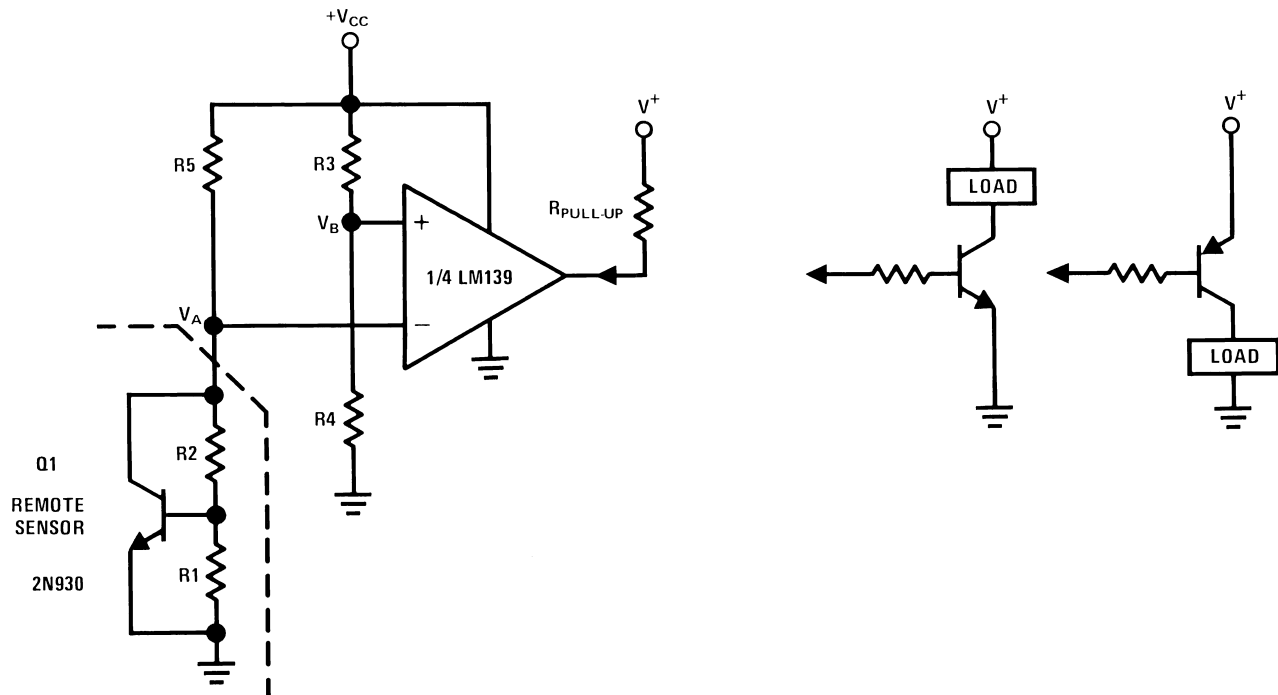


Figure 35. Temperature Alarm

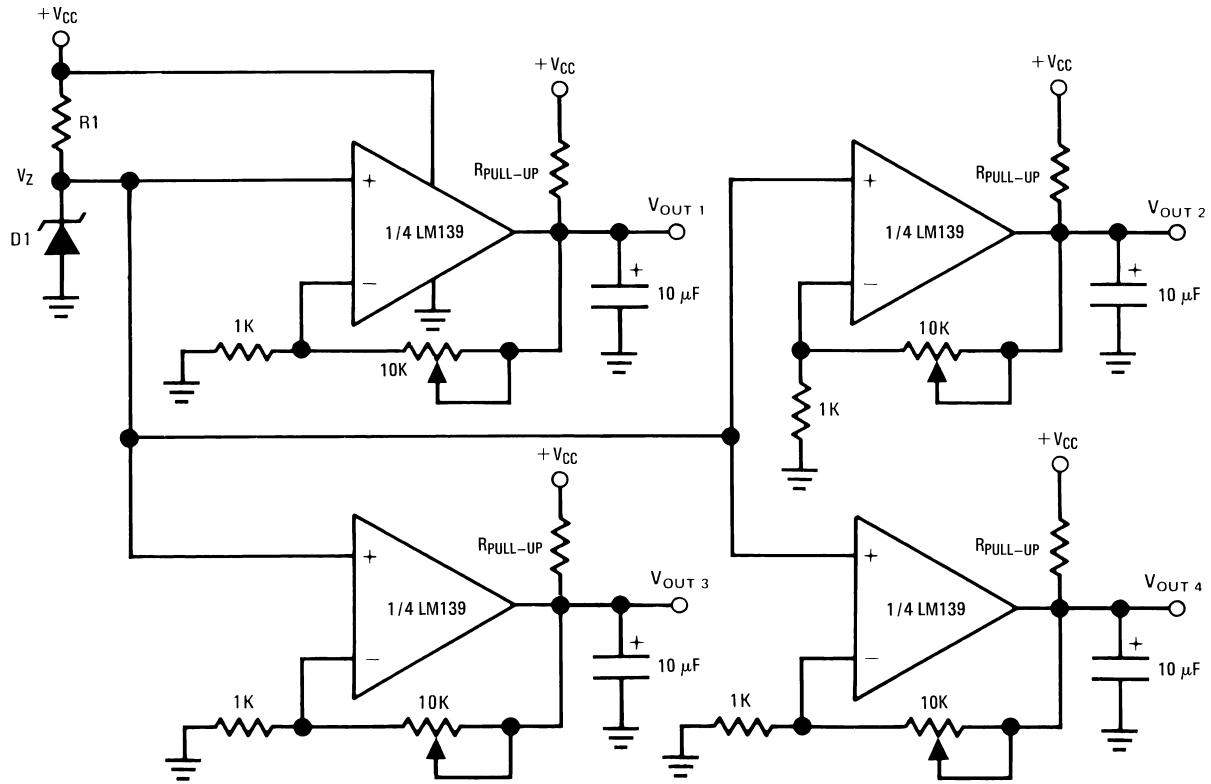
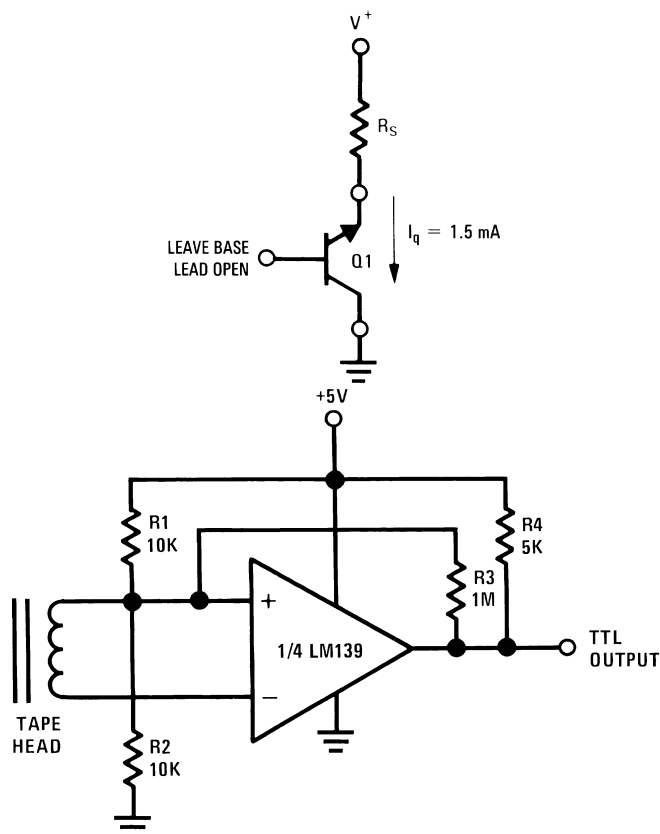


Figure 36. Four Variable Reference Supplies



Q1 = National Process 21 Selected for Low Reverse  $\beta$

**Figure 37. Zero T.C. Zener**



## 26 Digital Tape Reader

Two circuits are presented here—a tape reader for both magnetic tape and punched paper tape. The circuit shown in Figure 38, the magnetic tape reader, is the same as Figure 12 with a few resistor values changed. With a 5V supply, to make the output TTL compatible, and a 1 MΩ feedback resistor, ±5 mV of hysteresis is provided to insure fast switching and higher noise immunity. Using one LM139, four tape channels can be read simultaneously.

Figure 38. Magnetic Tape Reader with TTL Output

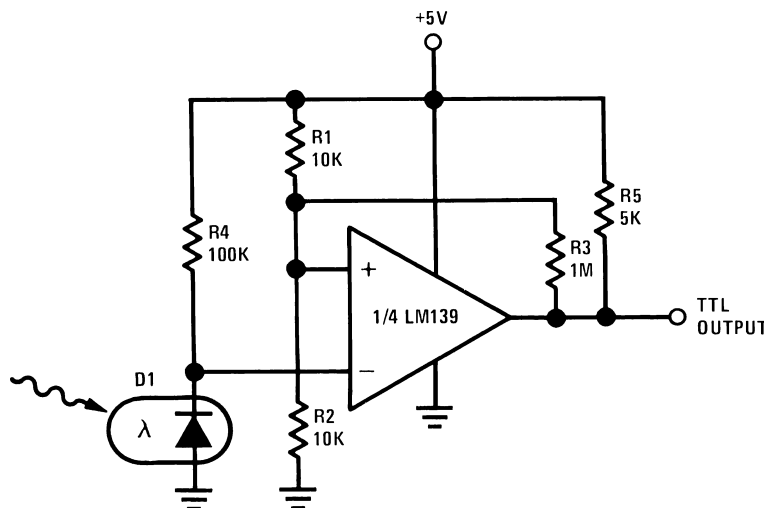


Figure 39. Paper Tape Reader With TTL Output

The paper tape reader shown in Figure 39 is essentially the same circuit as Figure 38 with the only change being in the type of transducer used. A photodiode is now used to sense the presence or absence of light passing through holes in the tape. Again a 1 MΩ feedback resistor gives ±5 mV of hysteresis to insure rapid switching and noise immunity.

## 27 Pulse Width Modulator

Figure 40 shows the circuit for a simple pulse width modulator circuit. It is essentially the same as that shown in Figure 13 with the addition of an input control voltage. With the input control voltage equal to  $+V_{CC}/2$ , operation is basically the same as that described previously. If the input control voltage is moved above or below  $+V_{CC}/2$ , however, the duty cycle of the output square wave will be altered. This is because the addition of the control voltage at the input has now altered the trip points. These trip points can be found if the circuit is simplified as in Figure 41. Equations 13 through 20 are still applicable if the effect of  $R_C$  is added, with equations 17 through 20 being altered for condition where  $V_C \neq +V_{CC}/2$ .

Pulse width sensitivity to input voltage variations will be increased by reducing the value of  $R_C$  from 10 kΩ and alternately, sensitivity will be reduced by increasing the value of  $R_C$ . The values of  $R_1$  and  $C_1$  can be varied to produce any desired center frequency from less than one hertz to the maximum frequency of the LM139 which will be limited by  $+V_{CC}$  and the output slew rate.

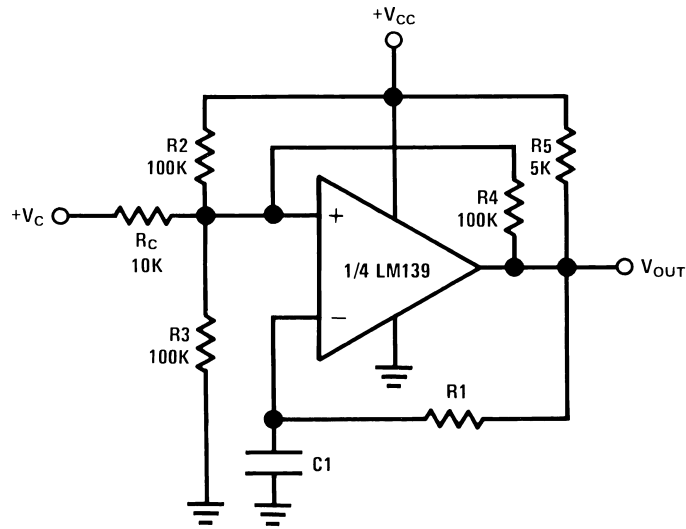
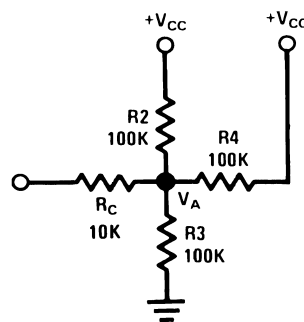
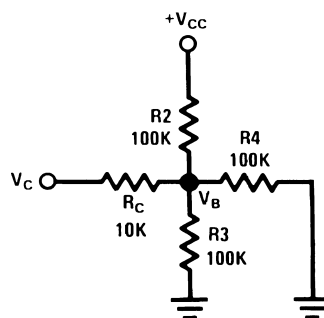


Figure 40. Pulse Width Modulator



$V_A$  = UPPER TRIP POINT



$V_B$  = LOWER TRIP POINT

Figure 41. Simplified Circuit For Calculating Trip Points of Figure 40

## 28 Positive and Negative Peak Detectors

Figure 42 Figure 43 show the schematics for simple positive or negative peak detectors. Basically the LM139 is operated closed loop as a unity gain follower with a large holding capacitor from the output to ground. For the positive peak detector a low impedance current source is needed so an additional transistor is added to the output. When the output of the comparator goes high, current is passed through  $Q_1$  to charge up  $C_1$ . The only discharge path will be the  $1\text{ M}\Omega$  resistor shunting  $C_1$  and any load that is connected to  $V_{OUT}$ . The decay time can be altered simply by changing the  $1\text{ M}\Omega$  resistor higher or lower as desired. The output should be used through a high impedance follower to avoid loading the output of the peak detector.

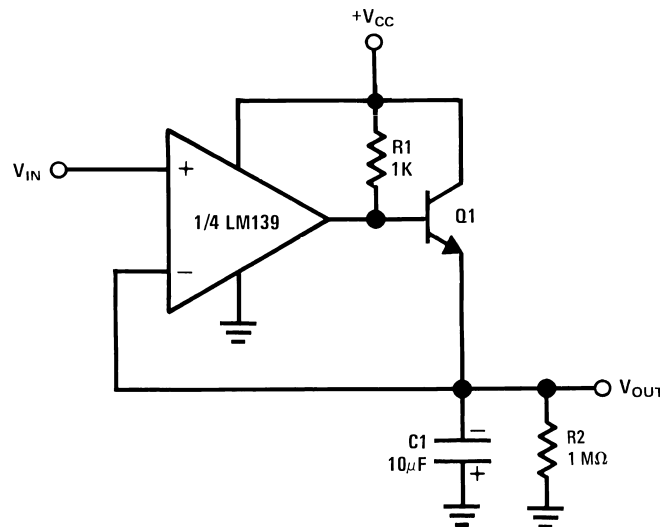


Figure 42. Positive Peak Detector

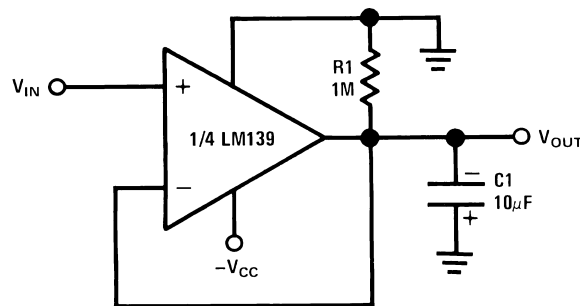


Figure 43. Negative Peak Detector

For the negative peak detector, a low impedance current sink is required and the output transistor of the LM139 works quite well for this. Again the only discharge path will be the  $1\text{ M}\Omega$  resistor and any load impedance used. Decay time is changed by varying the  $1\text{ M}\Omega$  resistor.

## 29 Conclusion

The LM139 is an extremely versatile comparator package offering reasonably high speed while operating at power levels in the low mW region. By offering four independent comparators in one package, many logic and other functions can now be performed at substantial savings in circuit complexity, parts count, overall physical dimensions, and power consumption.

For limited temperature range application, the LM239 or LM339 may be used in place of the LM139. It is hoped that this application note will provide the user with a guide for using the LM139 and also offer some new application ideas.

## IMPORTANT NOTICE

Texas Instruments Incorporated and its subsidiaries (TI) reserve the right to make corrections, enhancements, improvements and other changes to its semiconductor products and services per JESD46, latest issue, and to discontinue any product or service per JESD48, latest issue. Buyers should obtain the latest relevant information before placing orders and should verify that such information is current and complete. All semiconductor products (also referred to herein as "components") are sold subject to TI's terms and conditions of sale supplied at the time of order acknowledgment.

TI warrants performance of its components to the specifications applicable at the time of sale, in accordance with the warranty in TI's terms and conditions of sale of semiconductor products. Testing and other quality control techniques are used to the extent TI deems necessary to support this warranty. Except where mandated by applicable law, testing of all parameters of each component is not necessarily performed.

TI assumes no liability for applications assistance or the design of Buyers' products. Buyers are responsible for their products and applications using TI components. To minimize the risks associated with Buyers' products and applications, Buyers should provide adequate design and operating safeguards.

TI does not warrant or represent that any license, either express or implied, is granted under any patent right, copyright, mask work right, or other intellectual property right relating to any combination, machine, or process in which TI components or services are used. Information published by TI regarding third-party products or services does not constitute a license to use such products or services or a warranty or endorsement thereof. Use of such information may require a license from a third party under the patents or other intellectual property of the third party, or a license from TI under the patents or other intellectual property of TI.

Reproduction of significant portions of TI information in TI data books or data sheets is permissible only if reproduction is without alteration and is accompanied by all associated warranties, conditions, limitations, and notices. TI is not responsible or liable for such altered documentation. Information of third parties may be subject to additional restrictions.

Resale of TI components or services with statements different from or beyond the parameters stated by TI for that component or service voids all express and any implied warranties for the associated TI component or service and is an unfair and deceptive business practice. TI is not responsible or liable for any such statements.

Buyer acknowledges and agrees that it is solely responsible for compliance with all legal, regulatory and safety-related requirements concerning its products, and any use of TI components in its applications, notwithstanding any applications-related information or support that may be provided by TI. Buyer represents and agrees that it has all the necessary expertise to create and implement safeguards which anticipate dangerous consequences of failures, monitor failures and their consequences, lessen the likelihood of failures that might cause harm and take appropriate remedial actions. Buyer will fully indemnify TI and its representatives against any damages arising out of the use of any TI components in safety-critical applications.

In some cases, TI components may be promoted specifically to facilitate safety-related applications. With such components, TI's goal is to help enable customers to design and create their own end-product solutions that meet applicable functional safety standards and requirements. Nonetheless, such components are subject to these terms.

No TI components are authorized for use in FDA Class III (or similar life-critical medical equipment) unless authorized officers of the parties have executed a special agreement specifically governing such use.

Only those TI components which TI has specifically designated as military grade or "enhanced plastic" are designed and intended for use in military/aerospace applications or environments. Buyer acknowledges and agrees that any military or aerospace use of TI components which have **not** been so designated is solely at the Buyer's risk, and that Buyer is solely responsible for compliance with all legal and regulatory requirements in connection with such use.

TI has specifically designated certain components as meeting ISO/TS16949 requirements, mainly for automotive use. In any case of use of non-designated products, TI will not be responsible for any failure to meet ISO/TS16949.

### Products

Audio	<a href="http://www.ti.com/audio">www.ti.com/audio</a>
Amplifiers	<a href="http://amplifier.ti.com">amplifier.ti.com</a>
Data Converters	<a href="http://dataconverter.ti.com">dataconverter.ti.com</a>
DLP® Products	<a href="http://www.dlp.com">www.dlp.com</a>
DSP	<a href="http://dsp.ti.com">dsp.ti.com</a>
Clocks and Timers	<a href="http://www.ti.com/clocks">www.ti.com/clocks</a>
Interface	<a href="http://interface.ti.com">interface.ti.com</a>
Logic	<a href="http://logic.ti.com">logic.ti.com</a>
Power Mgmt	<a href="http://power.ti.com">power.ti.com</a>
Microcontrollers	<a href="http://microcontroller.ti.com">microcontroller.ti.com</a>
RFID	<a href="http://www.ti-rfid.com">www.ti-rfid.com</a>
OMAP Applications Processors	<a href="http://www.ti.com/omap">www.ti.com/omap</a>
Wireless Connectivity	<a href="http://www.ti.com/wirelessconnectivity">www.ti.com/wirelessconnectivity</a>

### Applications

Automotive and Transportation	<a href="http://www.ti.com/automotive">www.ti.com/automotive</a>
Communications and Telecom	<a href="http://www.ti.com/communications">www.ti.com/communications</a>
Computers and Peripherals	<a href="http://www.ti.com/computers">www.ti.com/computers</a>
Consumer Electronics	<a href="http://www.ti.com/consumer-apps">www.ti.com/consumer-apps</a>
Energy and Lighting	<a href="http://www.ti.com/energy">www.ti.com/energy</a>
Industrial	<a href="http://www.ti.com/industrial">www.ti.com/industrial</a>
Medical	<a href="http://www.ti.com/medical">www.ti.com/medical</a>
Security	<a href="http://www.ti.com/security">www.ti.com/security</a>
Space, Avionics and Defense	<a href="http://www.ti.com/space-avionics-defense">www.ti.com/space-avionics-defense</a>
Video and Imaging	<a href="http://www.ti.com/video">www.ti.com/video</a>

### TI E2E Community

[e2e.ti.com](http://e2e.ti.com)