

AN-87 Comparing the High Speed Comparators

ABSTRACT

This application report compares the Texas Instruments high speed comparators to similar devices from other manufacturers.

Contents

1	Introduction	2
2	Speed	3
3	Input Parameters	3
4	Other Performance Areas	4
5	Applications	7

List of Figures

1	Delay vs Overdrive.....	3
2	Delay vs Temperature	3
3	Offset Temperature Coefficient	4
4	LM161 Common Mode Range	4
5	LM161 Schematic Diagram	5
6	LM160 Schematic Diagram	6
7	Peak Detector	7
8	High Speed 3-bit A to D Converter	8
9	Direct Interfacing to ECL	9
10	Level Detector with Hysteresis	9

List of Tables

1	LM360/ μ A760C Comparison ($0^{\circ}\text{C} \leq T_A \leq +70^{\circ}\text{C}$, $V^+ = +5.0\text{V}$, $V^- = -5.0\text{V}$).....	2
2	LM261/NE529 Comparison ($0^{\circ}\text{C} \leq T_A \leq +70^{\circ}\text{C}$, $V^+ = +10\text{V}$, $V^- = -10\text{V}$, $V_{CC} = +5.0\text{V}$)	2

1 Introduction

Several integrated circuit voltage comparators exist which were designed with high speed and complementary TTL outputs as the main objectives. The more common applications for these devices are high speed analog to digital (A to D) converters, tape and disk-file read channels, fast zero-crossing detectors, and high speed differential line receivers.

The product philosophy at Texas Instruments was to create pin-for-pin replacement circuits that could be considered as second-sources to the other comparators, while simultaneously containing the improvements necessary to make a more optimum device for the intended usage. Optimized parameters include speed, input accuracy and impedance, supply voltage range, fanout, and reliability. The LM160/LM260/LM360 are replacement devices for the μ A760, while the LM161/LM261/LM361 replace the SE/NE529. [Table 1](#) and [Table 2](#) compare the critical parameters of the Texas Instruments commercial range devices to their respective counterparts.

Table 1. LM360/ μ A760C Comparison ($0^{\circ}\text{C} \leq T_A \leq +70^{\circ}\text{C}$, $V^+ = +5.0\text{V}$, $V^- = -5.0\text{V}$)

Parameter	LM360	μ A760C	Units
Input Offset Voltage	5.0	6.0	mV max
Input Offset Current	3.0	7.5	μ A max
Input Bias Current	20	60	μ A max
Input Capacitance	4.0	8.0	pF typ
Input Impedance	17	5.0	k Ω typ @ 1 MHz 25 $^{\circ}$ C
Differential Voltage Range	± 5.0	± 5.0	V typ
Common Mode Voltage Range	± 4.0	± 4.0	V typ
Gain	3.0	3.0	V/mV typ 25 $^{\circ}$
Fanout	4.0	2.0	74 Series TTL Loads
Propagation Delays:			
(1) 30 mVp-p 10 MHz Sinewave in	25	30	ns max 25 $^{\circ}$
(2) 2.0 Vp-p 10 MHz Sinewave in	20	25	ns max 25 $^{\circ}$
(3) 100 mV Step + 5.0 mV Overdrive	14	22	ns typ 25 $^{\circ}$

Table 2. LM261/NE529 Comparison ($0^{\circ}\text{C} \leq T_A \leq +70^{\circ}\text{C}$, $V^+ = +10\text{V}$, $V^- = -10\text{V}$, $V_{CC} = +5.0\text{V}$)

Parameter	LM261	NE529	Units
Input Offset Voltage	3.0	10	mV max
Input Offset Current	3.0	15	μ A max
Input Bias Current	20	50	μ A max
Input Impedance	17	5.0	k Ω typ @ 1 MHz 25 $^{\circ}$ C
Differential Voltage Range	± 5.0	± 5.0	V typ
Common Mode Voltage Range	± 6.0	± 6.0	V typ
Gain	3.0	4.0	V/mV typ 25 $^{\circ}$
Fanout	4.0	6.0	74 Series TTL Loads
Propagation Delay - 50 mV Overdrive	20	22	ns max 25 $^{\circ}$

2 Speed

Throughout the universe the subject of speed must be approached with caution; the same holds true here. Speed (propagation delay time) is a function of the measurement technique. The earlier “standard” of using a 100 mV input step with 5.0 mV overdrive has given way to seemingly endless variations. To be meaningful, speed comparisons must be made with identical conditions. It is for this reason that the speed conditions specified for the Texas Instruments parts are the same as those of the parts replaced.

Probably the most impressive speed characteristic of the six Texas Instruments parts is the fact that propagation delay is essentially independent of input overdrive (Figure 1); a highly desirable characteristic in A to D applications. Their delay typically varies only 3 ns for overdrive variations of 5.0 mV to 500 mV, whereas the other parts have a corresponding delay variation of two to one. As can be seen in Table 1 and Table 2, the Texas Instruments parts have an improved maximum delay specification. Further, the 20 ns maximum delay is meaningful since it is specified with a representative load: a 2.0 k Ω resistor to +5.0V and 15 pF total load capacitance. Figure 2 shows typical delay variation with temperature.

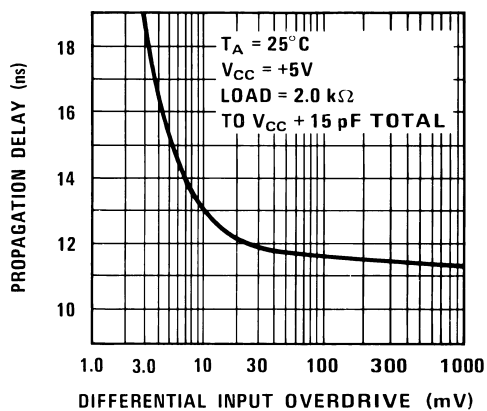


Figure 1. Delay vs Overdrive

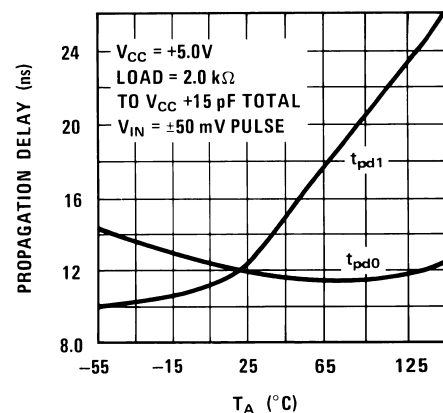


Figure 2. Delay vs Temperature

3 Input Parameters

The A to D, level detector, and line receiver applications of these devices require good input accuracy and impedance. In all these cases the differential input voltage is relatively large, resulting in a complete switch of input bias current as the input signal traverses the reference voltage level. This effect can give rise to reduced gain and threshold inaccuracy, dependent on input source impedances and comparator input bias currents. Table 1 and Table 2 show that the Texas Instruments parts have a substantially lower maximum bias current to ease this problem. This was done without resorting to Darlington input stages whose price is higher offset voltages and longer delay times. The lower bias currents also raise input resistance in the threshold region. Lower input capacitance and higher input resistance result in higher input impedance at high frequencies.

Even with low source impedances, input accuracy is still dependent on offset voltage. Since none of the devices under discussion has internal offset null capability, ultimate accuracy was improved by designing and specifying lower maximum offset voltage. Refer to Figure 3 for typical offset voltage drift with temperature.

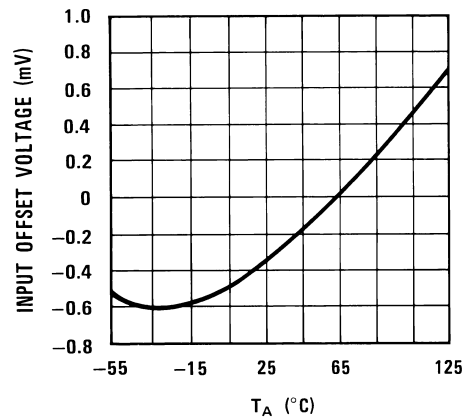


Figure 3. Offset Temperature Coefficient

4 Other Performance Areas

In the case of the LM160/LM260/LM360, fanout was doubled over the previous device. For the LM161/LM261/LM361, operating supply voltage range was extended to $\pm 15\text{V}$ op amp supplies which are often readily available where such a comparator is used. Figure 4 reveals the common mode range of the latter device.

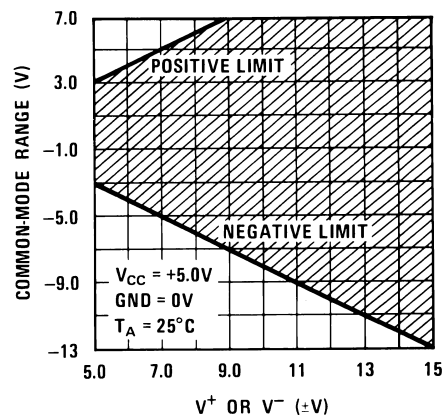


Figure 4. LM161 Common Mode Range

The performance improvements previously mentioned were a result of circuit design (Figure 5 and Figure 6) and device processing. Schottky clamping, which can give rise to reliability problems, was not used. Gold doping, which results in processing dependent speeds and low transistor beta, was not used. Instead a non-gold-doped process with high breakdown voltage, high beta, and high f_T ($\approx 1.5\text{ GHz}$) was selected which produced remarkably consistent performance independent of normal process variation. The higher breakdown voltage allows the LM161/LM261/LM361 to operate on $\pm 15\text{V}$ supplies and results in lower transistor capacitance; higher beta provides lower input bias currents; and higher f_T helps reduce propagation time.

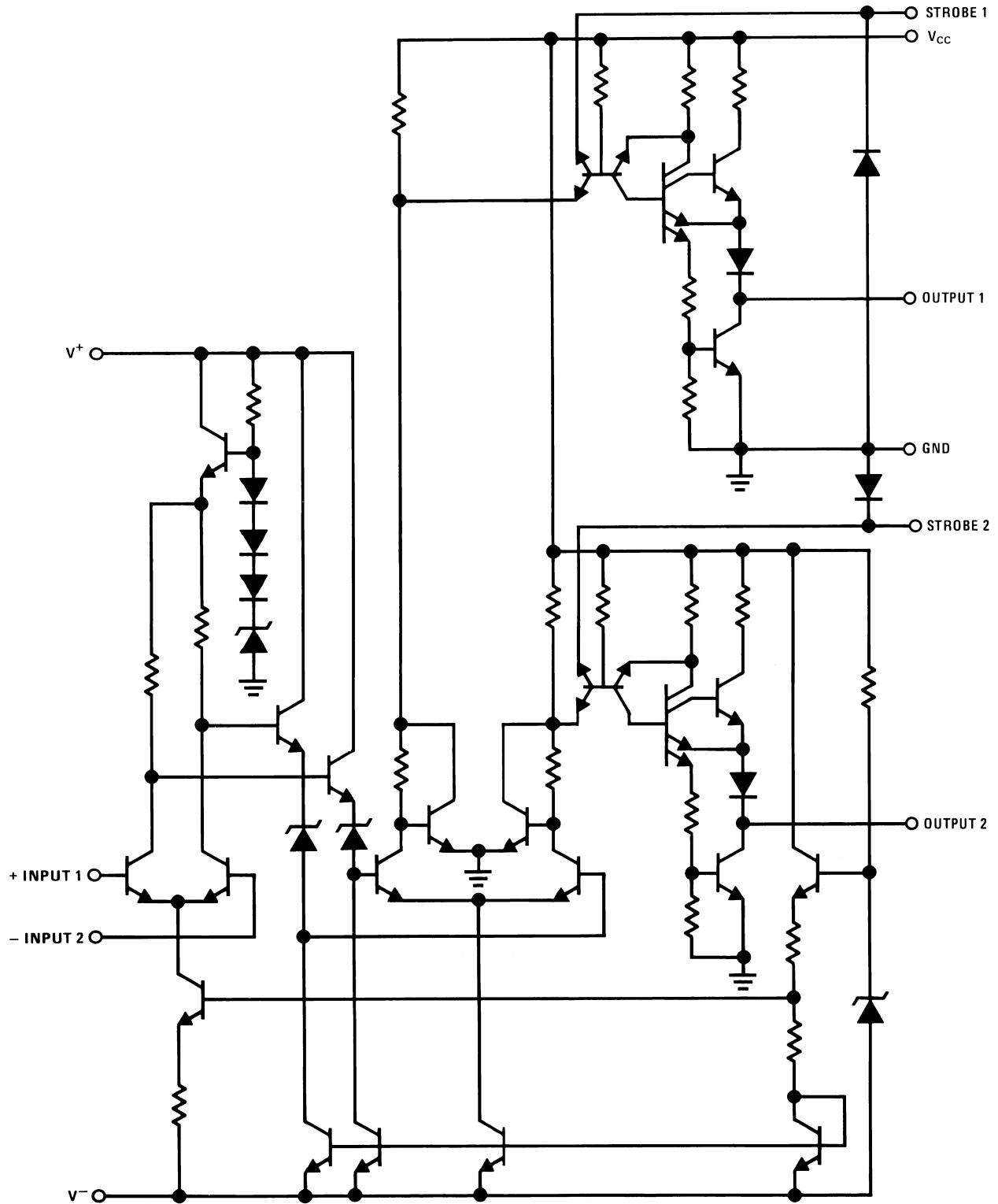


Figure 5. LM161 Schematic Diagram

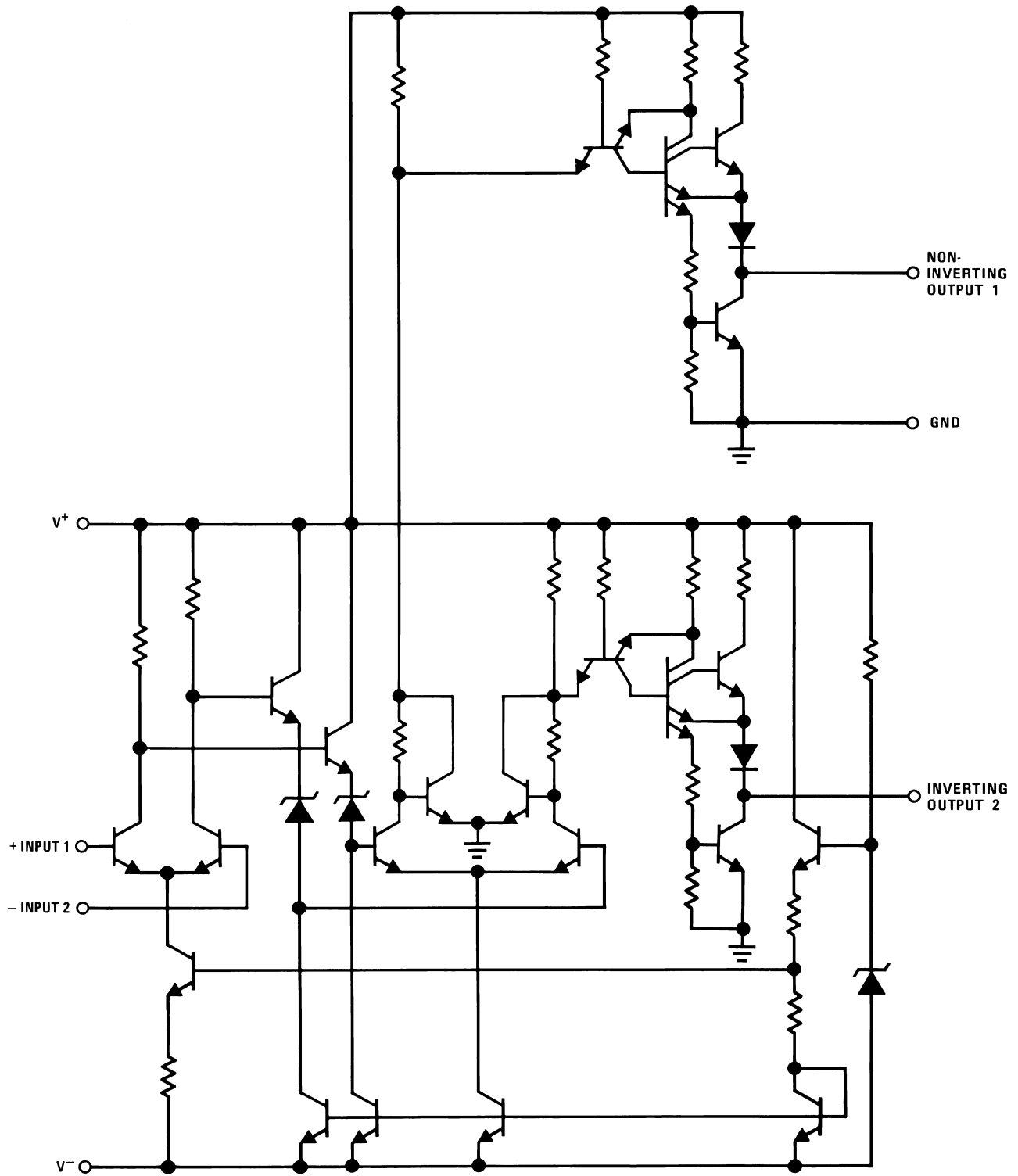


Figure 6. LM160 Schematic Diagram

5 Applications

Typical applications have been mentioned previously. The LM160 and LM161 may be combined as in [Figure 7](#) to create a fast, accurate peak detector for use in tape and disk-file read channels. A 3-bit A to D converter with 21 ns typical conversion time is shown in [Figure 8](#). Although primarily intended for interfacing to TTL logic, direct connection may be made to ECL logic from the LM161 by the technique shown in [Figure 9](#). When used this way the common mode range is shifted from that of the TTL configuration. Finally level detectors or line receivers may be implemented with hysteresis in the transfer characteristic as seen in [Figure 10](#).

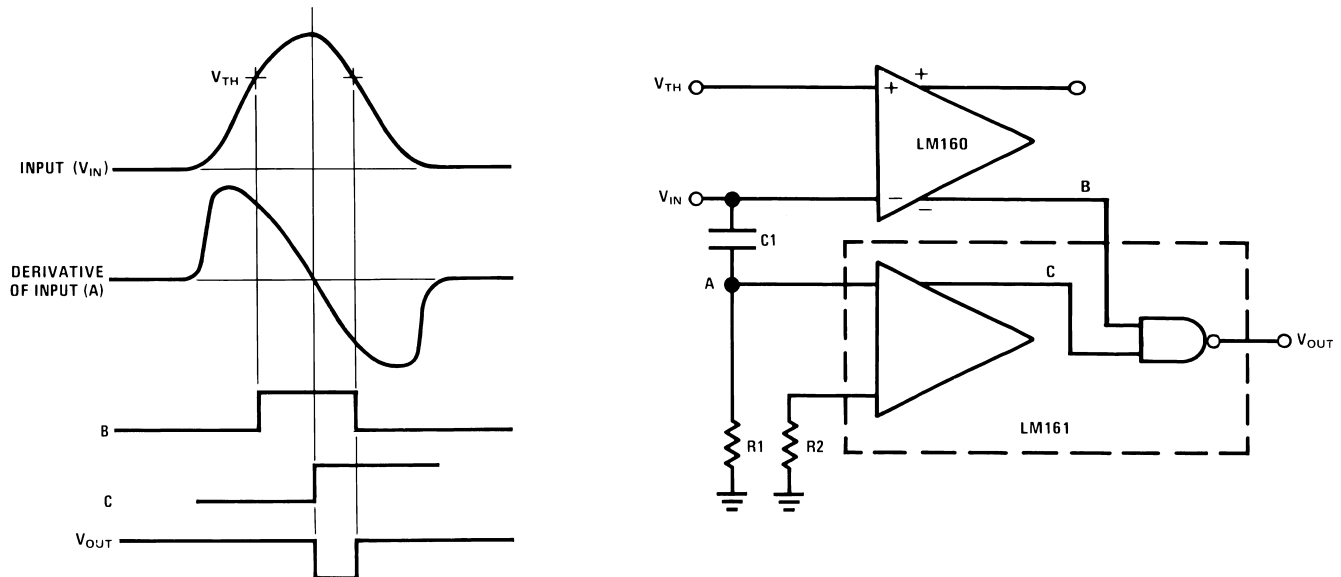


Figure 7. Peak Detector

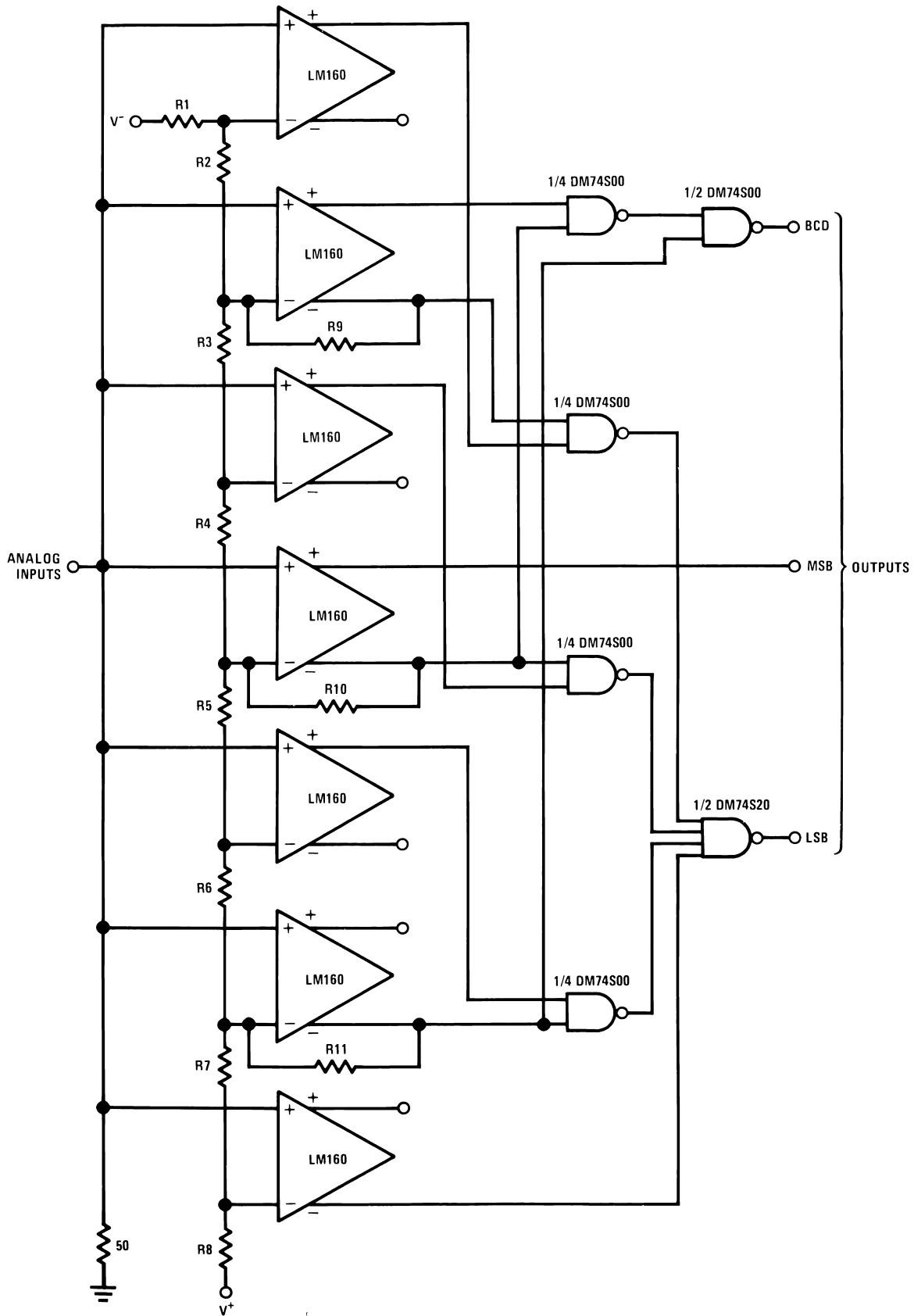


Figure 8. High Speed 3-bit A to D Converter

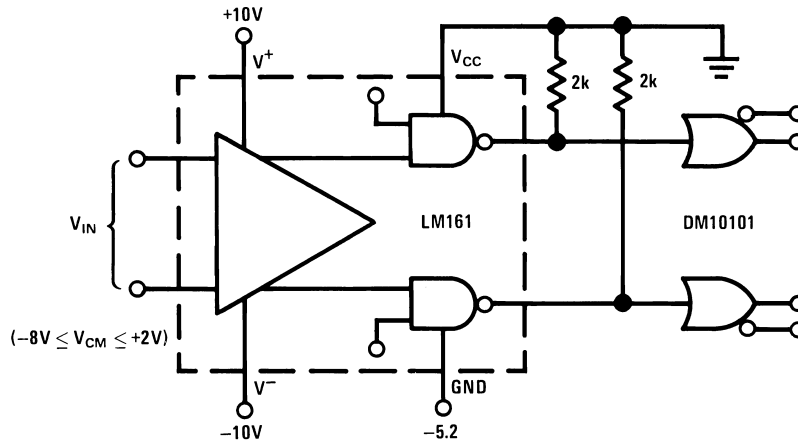
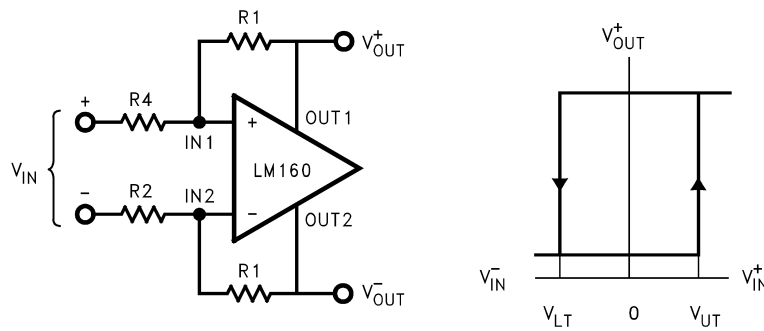


Figure 9. Direct Interfacing to ECL



$$V_{UT} = V_{OH} \left(\frac{R_2}{R_1} \right) - V_{OL} \left(\frac{R_4}{R_3} \right)$$

$$V_{LT} = V_{OL} \left(\frac{R_2}{R_1} \right) - V_{OH} \left(\frac{R_4}{R_3} \right)$$

(1)

Figure 10. Level Detector with Hysteresis

IMPORTANT NOTICE

Texas Instruments Incorporated and its subsidiaries (TI) reserve the right to make corrections, enhancements, improvements and other changes to its semiconductor products and services per JESD46, latest issue, and to discontinue any product or service per JESD48, latest issue. Buyers should obtain the latest relevant information before placing orders and should verify that such information is current and complete. All semiconductor products (also referred to herein as "components") are sold subject to TI's terms and conditions of sale supplied at the time of order acknowledgment.

TI warrants performance of its components to the specifications applicable at the time of sale, in accordance with the warranty in TI's terms and conditions of sale of semiconductor products. Testing and other quality control techniques are used to the extent TI deems necessary to support this warranty. Except where mandated by applicable law, testing of all parameters of each component is not necessarily performed.

TI assumes no liability for applications assistance or the design of Buyers' products. Buyers are responsible for their products and applications using TI components. To minimize the risks associated with Buyers' products and applications, Buyers should provide adequate design and operating safeguards.

TI does not warrant or represent that any license, either express or implied, is granted under any patent right, copyright, mask work right, or other intellectual property right relating to any combination, machine, or process in which TI components or services are used. Information published by TI regarding third-party products or services does not constitute a license to use such products or services or a warranty or endorsement thereof. Use of such information may require a license from a third party under the patents or other intellectual property of the third party, or a license from TI under the patents or other intellectual property of TI.

Reproduction of significant portions of TI information in TI data books or data sheets is permissible only if reproduction is without alteration and is accompanied by all associated warranties, conditions, limitations, and notices. TI is not responsible or liable for such altered documentation. Information of third parties may be subject to additional restrictions.

Resale of TI components or services with statements different from or beyond the parameters stated by TI for that component or service voids all express and any implied warranties for the associated TI component or service and is an unfair and deceptive business practice. TI is not responsible or liable for any such statements.

Buyer acknowledges and agrees that it is solely responsible for compliance with all legal, regulatory and safety-related requirements concerning its products, and any use of TI components in its applications, notwithstanding any applications-related information or support that may be provided by TI. Buyer represents and agrees that it has all the necessary expertise to create and implement safeguards which anticipate dangerous consequences of failures, monitor failures and their consequences, lessen the likelihood of failures that might cause harm and take appropriate remedial actions. Buyer will fully indemnify TI and its representatives against any damages arising out of the use of any TI components in safety-critical applications.

In some cases, TI components may be promoted specifically to facilitate safety-related applications. With such components, TI's goal is to help enable customers to design and create their own end-product solutions that meet applicable functional safety standards and requirements. Nonetheless, such components are subject to these terms.

No TI components are authorized for use in FDA Class III (or similar life-critical medical equipment) unless authorized officers of the parties have executed a special agreement specifically governing such use.

Only those TI components which TI has specifically designated as military grade or "enhanced plastic" are designed and intended for use in military/aerospace applications or environments. Buyer acknowledges and agrees that any military or aerospace use of TI components which have **not** been so designated is solely at the Buyer's risk, and that Buyer is solely responsible for compliance with all legal and regulatory requirements in connection with such use.

TI has specifically designated certain components as meeting ISO/TS16949 requirements, mainly for automotive use. In any case of use of non-designated products, TI will not be responsible for any failure to meet ISO/TS16949.

Products

Audio	www.ti.com/audio
Amplifiers	amplifier.ti.com
Data Converters	dataconverter.ti.com
DLP® Products	www.dlp.com
DSP	dsp.ti.com
Clocks and Timers	www.ti.com/clocks
Interface	interface.ti.com
Logic	logic.ti.com
Power Mgmt	power.ti.com
Microcontrollers	microcontroller.ti.com
RFID	www.ti-rfid.com
OMAP Applications Processors	www.ti.com/omap
Wireless Connectivity	www.ti.com/wirelessconnectivity

Applications

Automotive and Transportation	www.ti.com/automotive
Communications and Telecom	www.ti.com/communications
Computers and Peripherals	www.ti.com/computers
Consumer Electronics	www.ti.com/consumer-apps
Energy and Lighting	www.ti.com/energy
Industrial	www.ti.com/industrial
Medical	www.ti.com/medical
Security	www.ti.com/security
Space, Avionics and Defense	www.ti.com/space-avionics-defense
Video and Imaging	www.ti.com/video

TI E2E Community

e2e.ti.com