

Design a Flyback Solution With Optocoupler to Improve Regulation Performance

Johnny Guo, Daniel Li

ABSTRACT

This paper presents an isolated flyback design with synchronous buck regulator LM5160 using optocoupler for better regulation performance. Compared with typical isolated flyback solution, flyback topology has outstanding features like higher frequency, smaller solution size, and better efficiency. Higher performance and reliability requires better input and load regulation. For typical flyback design, the isolated output voltage is only controlled by primary output voltage and transformer. Therefore the input and load regulation cannot be ensured. Aiming at this, an optocoupler is added into the design as compensation to improve regulation performance. This paper includes application design and test results.

Contents

1	Introduction	2
2	Design Flyback With LM5160	2
2.1	Selection of Primary Voltage and Turns Ratio	3
2.2	Feedback Resistor	3
2.3	Secondary Rectifier Diode	3
2.4	Transformer Calculation	4
2.5	Input and Output Capacitor	4
2.6	Ripple Injection Circuit	5
2.7	LM5160 Flyback Schematic	6
3	Design Flyback With Optocoupler	6
3.1	Quiescent Operation Point	7
3.2	Loop Compensation Design	7
3.3	LM5160 Flyback With Optocoupler Schematic	8
4	Test Result and Regulation Improvement	9
4.1	Regulation Performance Improvement	9
4.2	Efficiency	12
4.3	Ripple	12
4.4	Transient Performance	13
5	Conclusion	13
	Reference	13

Figures

Figure 1.	LM5160 Flyback Solution	3
Figure 2.	LM5160 Flyback Schematic	6
Figure 3.	Optocoupler for Secondary Output Signal Transmission	6
Figure 4.	Loop Test Result With Type I Compensation Network	8

Figure 5.	LM5160 Flyback With Optocoupler Schematic.....	9
Figure 6.	Load Regulation: LM5160 Flyback Without Optocoupler	9
Figure 7.	Load Regulation: LM5160 Flyback With Optocoupler.....	10
Figure 8.	Input Regulation: LM5160 Flyback Without Optocoupler	11
Figure 9.	Input Regulation: LM5160 Flyback With Optocoupler	11
Figure 10.	Efficiency	12
Figure 11.	Output Voltage Ripple ($V_{IN} = 48\text{ V}$, $V_{OUT2} = 12\text{ V}$, $I_{OUT2} = 1\text{ A}$).....	12
Figure 12.	Transient Test ($V_{IN} = 48\text{ V}$, $V_{OUT2} = 12\text{ V}$, $I_{OUT2} = 0.5\text{ A to }1\text{ A}$, $0.1\text{ A}/\mu\text{s}$ Slew Rate)	13

Tables

Table 1.	Design Specification	2
----------	----------------------------	---

1 Introduction

The LM5160 device is a 65-V, 1.5-A synchronous, COT control mode, step-down converter with integrated high- and low-side MOSFETs. The LM5160 can be applied in numerous end equipment systems requiring efficient step-down regulation. Flyback solution is also a typical application for this device.

Compared with traditional isolated flyback solution, flyback topology has outstanding features like higher frequency, smaller solution size, and better efficiency. In this kind of primary-side control, the secondary regulation is affected by the leakage inductance, diode drop, DCR, and so forth. Thus the flyback solution results in poor regulation, especially in wide V_{IN} , high I_{OUT} application. Higher performance and reliability requires better input and load regulation. To improve regulation performance, an optocoupler is added into the design as compensation to increase regulation performance. This paper provides the application design and test result using the LM5160 with optocoupler.

2 Design Flyback With LM5160

We start the design with a typical flyback circuit using synchronous buck regulator LM5160, and calculate the component values. Table 1 is the design specification for the example. Figure 1 shows the LM5160 flyback solution.

Table 1. Design Specification

Design Specifications	
Input voltage range (V_{IN})	33 V to 57 V
Isolated output voltage (V_{OUT2})	12 V
Primary load current (I_{OUT1})	0 A
Isolated load current (I_{OUT2})	1 A
Switching frequency (f)	340 kHz

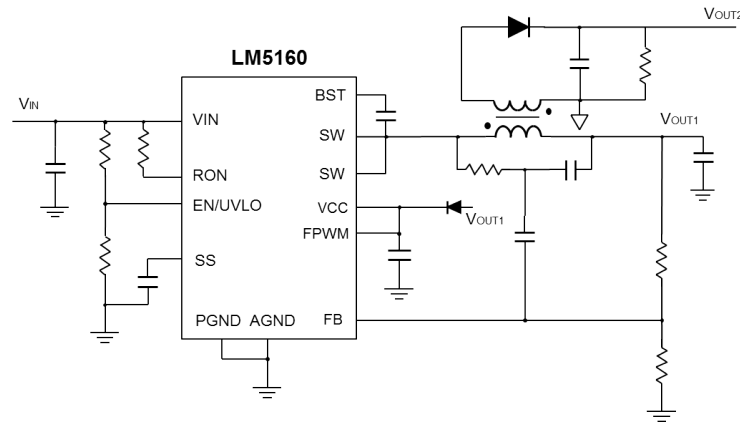


Figure 1. LM5160 Flyback Solution

2.1 Selection of Primary Voltage and Turns Ratio

The primary output voltage in a flyback converter should be no more than half of the minimum input voltage. For a minimum V_{IN} of 33 V, the primary output voltage (V_{OUT1}) should be less than 16 V. In this design, a transformer turns ratio ($N_1:N_2$) of 1:1 is selected. Using this turns ratio, the primary output voltage V_{OUT1} is calculated to be:

$$V_{OUT1} = \frac{V_{OUT2} + 0.7 \text{ V}}{1} = 12.7 \text{ V} \quad (1)$$

The 0.7 V subtracted from represents the forward voltage drop of the secondary rectifier diode.

2.2 Feedback Resistor

With the required primary output voltage set point at 12.7 V and $V_{FB} = 2 \text{ V}$ (typical), this parameter is selected by the user. V_{OUT1} is calculated as follows:

$$V_{OUT1} = V_{FB} \times \left(1 + \frac{R_{FB2}}{R_{FB1}} \right) \quad (2)$$

Choose $R_{FB1} = 1.91 \text{ k}\Omega$.

$$R_{FB2} = R_{FB1} \times \left(\frac{V_{OUT1}}{V_{FB}} - 1 \right) = 10.2 \text{ k}\Omega \quad (3)$$

Choose $R_{FB2} = 10 \text{ k}\Omega$.

2.3 Secondary Rectifier Diode

The secondary rectifier diode must block the maximum input voltage multiplied by the transformer turns ratio. Equation 4 gives the minimum diode reverse voltage rating.

$$V_{R(\text{diode})} = V_{IN(\text{MAX})} \times \frac{N_2}{N_1} + V_{OUT2} = 69 \text{ V} \quad (4)$$

Considering the margin and the voltage spike when high-side MOSFET turns on, a diode of 80 V or higher reverse voltage rating should be selected. If the input voltage has transients above the normal operating maximum input voltage of 57 V, then the worst-case transient input voltage should be used in the diode voltage calculation. A 100-V/3-A diode is selected in this design.

2.4 Transformer Calculation

A coupled inductor or a flyback-type transformer is required for flyback topology. Energy is transferred from primary to secondary when the synchronous switch of the buck converter is on.

Peak current in high-side FET and primary winding,

$$I_{SW(PEAK)} = I_{L(PEAK)} = \frac{N_2}{N_1} I_{OUT2} + \frac{\Delta I_L}{2} \quad (5)$$

The maximum inductor current ripple that can be tolerated is given by,

$$\Delta I_L = \left(I_{SW(PEAK)} - \frac{N_2}{N_1} I_{OUT2} \right) \times 2 = (1.8 \text{ A} - 1 \times 1.0 \text{ A}) \times 2 = 1.6 \text{ A} \quad (6)$$

Primary winding peak-to-peak current ripple,

$$\Delta I_L = \frac{V_{IN(MAX)} - V_{OUT1}}{L \times f} \times \frac{V_{OUT1}}{V_{IN(MAX)}} \quad (7)$$

The minimum inductor value is given by,

$$L = \frac{V_{IN(MAX)} - V_{OUT1}}{\Delta I_L \times f} \times \frac{V_{OUT1}}{V_{IN(MAX)}} = \frac{57 \text{ V} - 12.7 \text{ V}}{1.6 \text{ A} \times 340 \text{ kHz}} \times \frac{12.7 \text{ V}}{57 \text{ V}} = 18 \mu\text{H} \quad (8)$$

We chose 33 μH for primary inductor, thus $\Delta I_L = 0.87 \text{ A}$.

2.5 Input and Output Capacitor

An input capacitor should be large enough to limit the input voltage ripple.

$$C_{IN} \geq \frac{\Delta I_L}{8 \times f \times \Delta V_{IN}} = \frac{0.87 \text{ A}}{8 \times 340 \text{ kHz} \times 0.5 \text{ V}} = 0.64 \mu\text{F} \quad (9)$$

For better input ripple performance, an input capacitor with a standard value of 2.2 μF is selected.

The secondary output current is sourced by C_{OUT2} during on time. Ignoring the current transitions time in the secondary winding, the secondary output capacitor ripple voltage can be calculated as shown in Equation 10.

$$C_{OUT2} = \frac{I_{OUT2} \times D_{MAX}}{\Delta V_{OUT2} \times f} = \frac{1.0 \text{ A} \times 12.7 \text{ V}/33 \text{ V}}{0.12 \text{ V} \times 340 \text{ kHz}} = 9.4 \text{ } \mu\text{F} \quad (10)$$

Two 10- μF capacitors are selected for secondary output.

For primary-side output current, in this design, $I_{OUT1} = 0 \text{ A}$,

$$\Delta V_{OUT1} = \frac{I_{OUT2} \times \frac{N_2}{N_1} \times T_{ON(MAX)}}{C_{OUT1}} \quad (11)$$

Set $\Delta V_{OUT1} = 100 \text{ mV}$,

$$C_{OUT1} = \frac{I_{OUT2} \times \frac{N_2}{N_1} \times T_{ON(MAX)}}{\Delta V_{OUT1}} = \frac{1 \text{ A} \times 1 \times \frac{12.7 \text{ V}}{33 \text{ V}}/340 \text{ kHz}}{100 \text{ mV}} = 11.3 \text{ } \mu\text{F} \quad (12)$$

Also two 10- μF capacitors are selected for primary side output to maintain a small ripple.

2.6 Ripple Injection Circuit

As introduced in LM5160 data sheet, Type I and Type II ripple circuits suffer from larger jitter as the reflected load current affects the feedback ripple. For a constant on-time converter to be stable, the injected phase matched ripple should be larger than the capacitive ripple on primary output capacitor. Type III ripple injection circuit is used in this design. New loop stability criteria for COT mode with ripple injection approach as follows:

$$\frac{L \times C_{OUT1}}{R_r \times C_r} > \frac{T_{ON}}{2} \quad (13)$$

$$R_r \times C_r < \frac{(V_{IN(MIN)} - V_{OUT1}) \times T_{ON}}{V_{inj_RIPPLE}} \quad (14)$$

$$C_r > C_{ac} > \frac{1}{2\pi \times f \times \left(\frac{R_{FB1} R_{FB2}}{R_{FB1} + R_{FB2}} \right)} \quad (15)$$

Calculation result follows:

$$R_r \times C_r < \frac{2 \times L \times C_{OUT1}}{T_{ON}} = \frac{2 \times 33 \text{ } \mu\text{H} \times 20 \text{ } \mu\text{F} \times 340 \text{ kHz}}{12.7 \text{ V} / 33 \text{ V}} = 1.17 \times 10^{-2} \quad (16)$$

$$R_r \times C_r < \frac{(V_{IN(MIN)} - V_{OUT1}) \times T_{ON}}{V_{RIPPLE}} = \frac{(33 \text{ V} - 12.7 \text{ V}) \times 12.7 \text{ V} / 33 \text{ V}}{25 \text{ mV} \times 340 \text{ kHz}} = 9.19 \times 10^{-4} \quad (17)$$

$$C_r > C_{ac} > \frac{1}{2\pi \times f \times \left(\frac{R_{FB1} R_{FB2}}{R_{FB1} + R_{FB2}} \right)} = \frac{1}{2\pi \times 340 \text{ kHz} \times \left(\frac{1.91 \text{ k}\Omega \times 10 \text{ k}\Omega}{1.91 \text{ k}\Omega + 10 \text{ k}\Omega} \right)} = 292 \text{ pF} \quad (18)$$

For this design, select $R_r = 51.1 \text{ k}\Omega$, $C_r = 1000 \text{ pF}$, $C_{ac} = 63 \text{ nF}$.

2.7 LM5160 Flyback Schematic

Figure 2 shows the final schematic for isolated flyback power supply. The regulator power loss can be reduced by supplying the VCC voltage externally from primary output. A preload of 1.63 kΩ is needed to prevent secondary output voltage from going too high at light load.

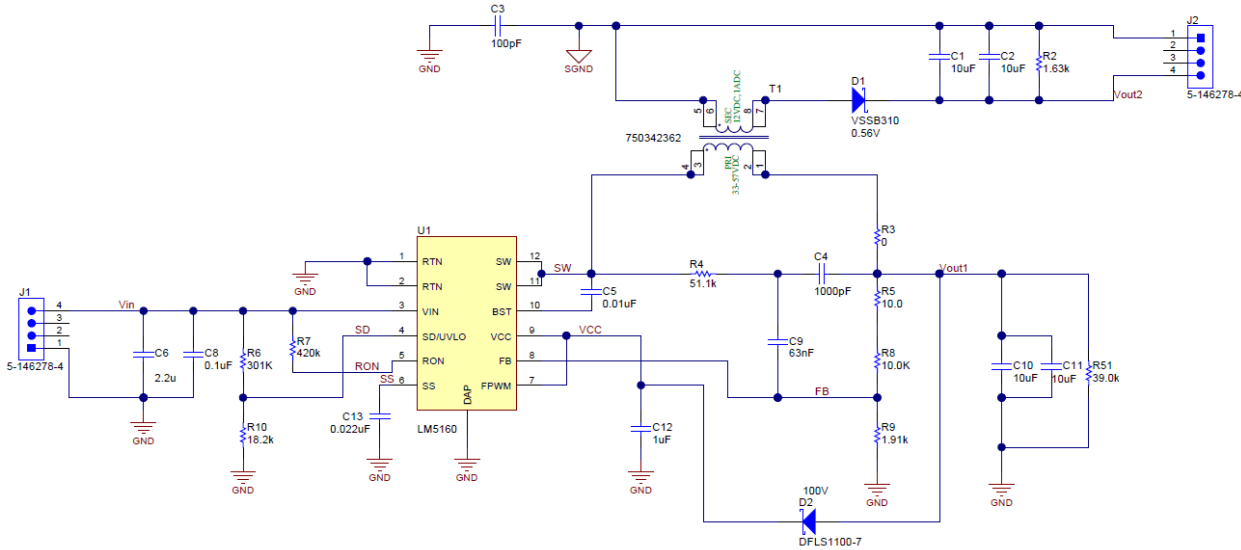


Figure 2. LM5160 Flyback Schematic

3 Design Flyback With Optocoupler

Normally for isolated flyback, secondary output performance is controlled only by the primary output voltage and transformer, and it can achieve a 6% to 8% regulation performance. But for some applications, higher regulation is required, especially when output current is higher. An optocoupler can be used as a secondary-to-primary compensation to feedback voltage. Figure 3 shows the application circuit.

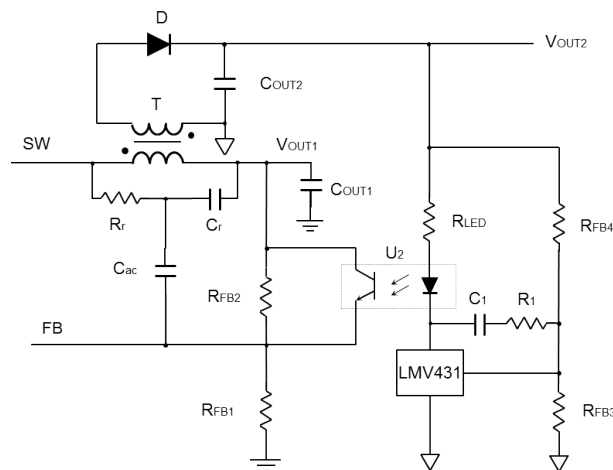


Figure 3. Optocoupler for Secondary Output Signal Transmission

LMV431 is regarded as a transconductance amplifier. Optocoupler is designed for signal transmission between two electrically separated circuits while maintaining a high degree of electrical isolation. Current transmission rate (CTR) is related to IF and temperature. Generally, typical CTR value is adopted in analysis.

In this application, optocoupler delivers the secondary side output voltage information to primary feedback. When V_{OUT2} rises, current flowing through primary forward LED increases, and then the output collector current also increases and raises the FB voltage; this extends OFF time and drives primary output voltage down, thus V_{OUT2} is pulled down.

3.1 Quiescent Operation Point

An LMV431 optocoupler is used to improve regulation performance, and quiescent operation point should be set first. Secondary side feedback resistors are calculated as in Equation 19.

$$V_{REF} = V_{OUT2} \times \frac{R_{FB3}}{R_{FB3} + R_{FB4}} \quad (19)$$

Choose $R_{FB3} = 1.24 \text{ k}\Omega$, then $R_{FB4} = 10.8 \text{ k}\Omega$.

R_{LED} can be calculated as in Equation 20.

$$I_{LED} = \frac{V_{OUT2} - V_{LMV431} - V_{LED}}{R_{LED}} \quad (20)$$

For primary side, FB voltage is determined by feedback resistors and optocoupler collector current.

$$V_{FB} = V_{OUT1} \times \frac{R_{FB1}}{R_{FB1} + R_{FB2}} + I_{LED} \times CTR \times \frac{R_{FB1}R_{FB2}}{R_{FB1} + R_{FB2}} \quad (21)$$

Choose $R_{LED} = 7.5 \text{ k}\Omega$, then $R_{FB1} = 1.5 \text{ k}\Omega$.

3.2 Loop Compensation Design

For this flyback solution, the optocoupler secondary-side transistor current is compensation for LM5160 feedback signal. Type I compensation is chosen here for normal design.

Select $R1 = 0$, $C1 = 6.8 \text{ }\mu\text{F}$, Figure 4 is loop test result. Cross-frequency is 4.83 kHz, phase margin is 52°. The cross-frequency is limited by ripple injection parameter, transformer and optocoupler response speed. Normally the performance can meet the requirements of most applications.

For design that requires higher cross-frequency, the basic method is to test loop with type I compensation as basic reference. The required gain can be read from loop test result. Then calculate the compensation demand according to design target as follows:

Phase compensation @required cross-frequency = current phase margin – phase @current cross-frequency – phase created by type I compensation

After confirming the gain and phase requirement of compensation, choose compensation network type and calculate required parameter to fit design target.

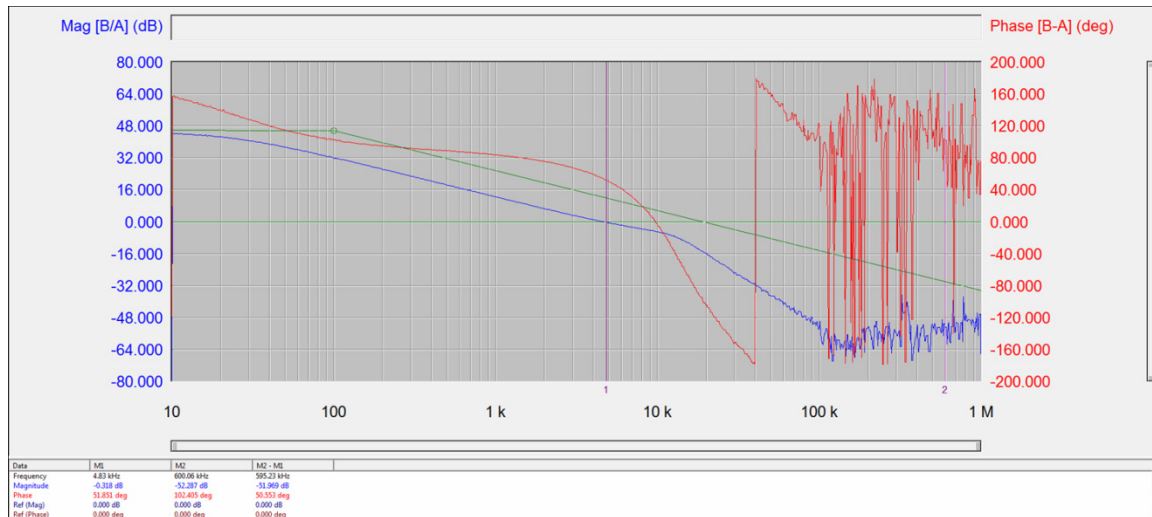


Figure 4. Loop Test Result With Type I Compensation Network

3.3 LM5160 Flyback With Optocoupler Schematic

Figure 5 shows flyback with optocoupler schematic. FODM121A optocoupler and LMV431A are used in this design. A 0.1- μ F capacitor is added across LMV431A Ref and cathode pin to ensure normal work. No preload is needed here because of secondary output closed-loop control.

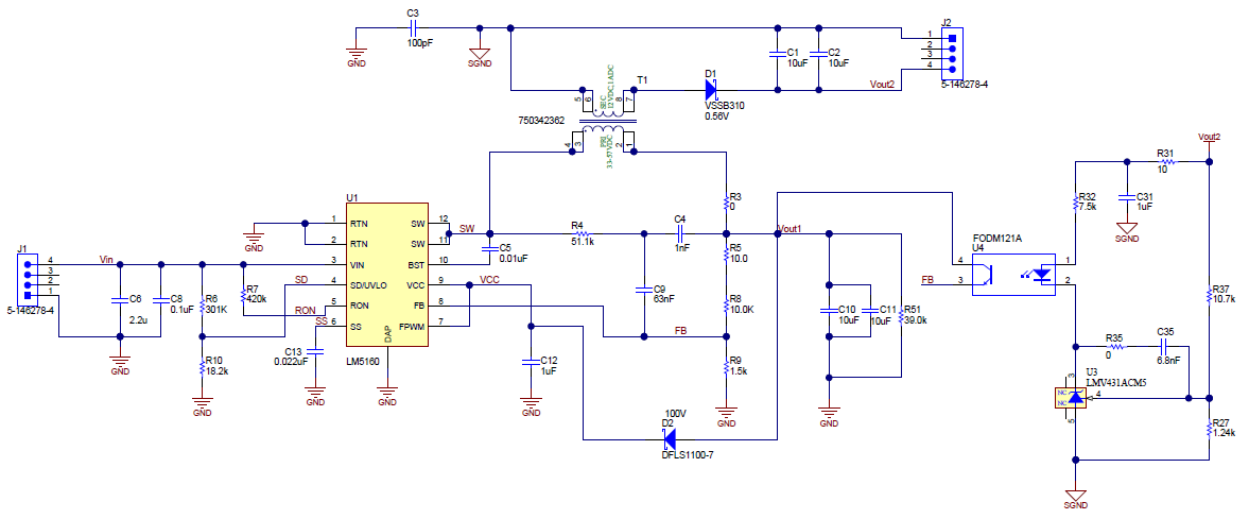


Figure 5. LM5160 Flyback With Optocoupler Schematic

4 Test Result and Regulation Improvement

For better comparison of regulation performance, two boards are under evaluation, one without optocoupler and the other with optocoupler.

4.1 Regulation Performance Improvement

Figure 6 and Figure 7 show load regulation performance of non-optocoupler and optocoupler solution, respectively. Load regulation performance is improved significantly.

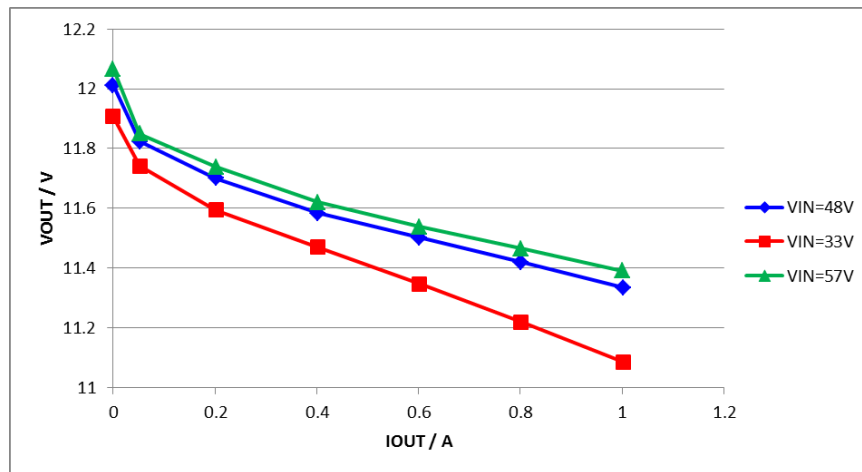


Figure 6. Load Regulation: LM5160 Flyback Without Optocoupler

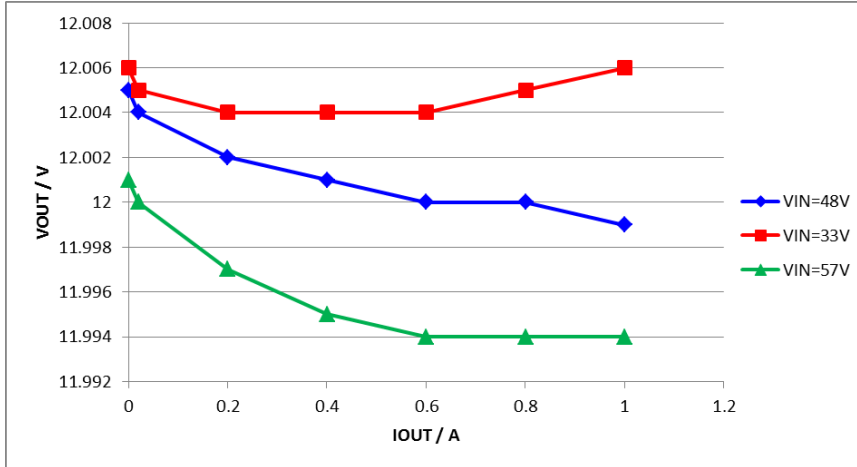


Figure 7. Load Regulation: LM5160 Flyback With Optocoupler

Figure 8 and Figure 9 show input regulation performance of non-optocoupler and optocoupler solution, respectively. With optocoupler feedback, input regulation performance improves.

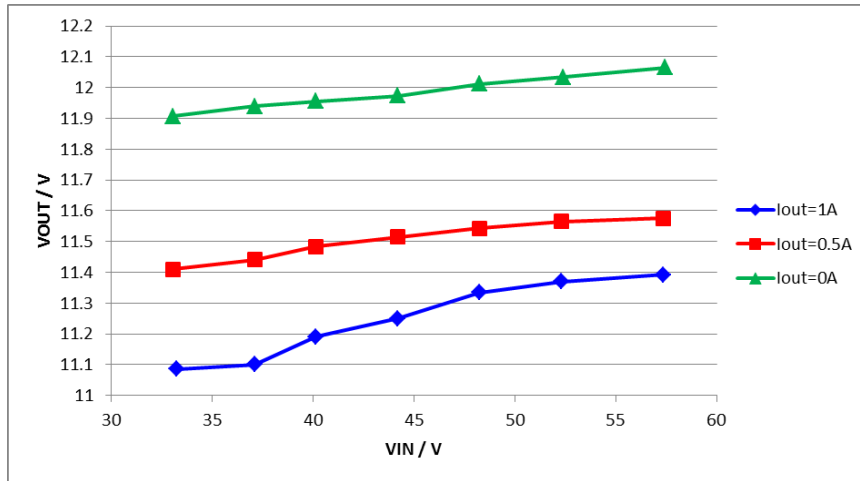


Figure 8. Input Regulation: LM5160 Flyback Without Optocoupler

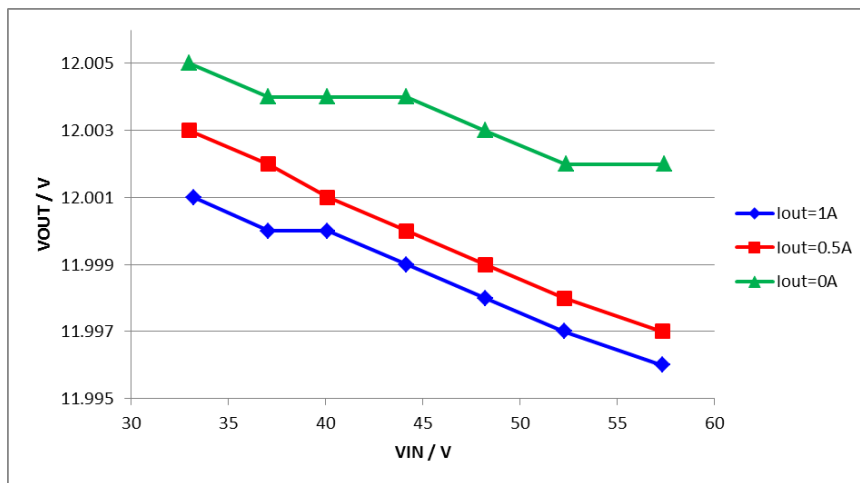


Figure 9. Input Regulation: LM5160 Flyback With Optocoupler

4.2 Efficiency

For optocoupler solution, efficiency is shown in Figure 10. Up to 89.7% efficiency is achieved with flyback solution and higher than typical flyback solution.

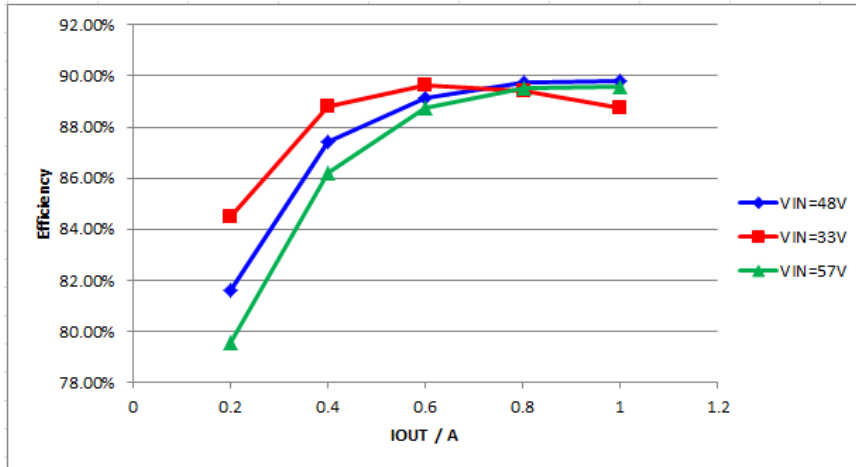


Figure 10. Efficiency

4.3 Ripple

Figure 11 shows the output ripple, approximately 140 mV when $V_{IN} = 48\text{ V}$, $V_{OUT2} = 12\text{ V}$, $I_{OUT2} = 1\text{ A}$. In this design, secondary output capacitor value is $20\text{ }\mu\text{F}$, and ripple performance can be improved by increasing output capacitors to achieve higher requirement.

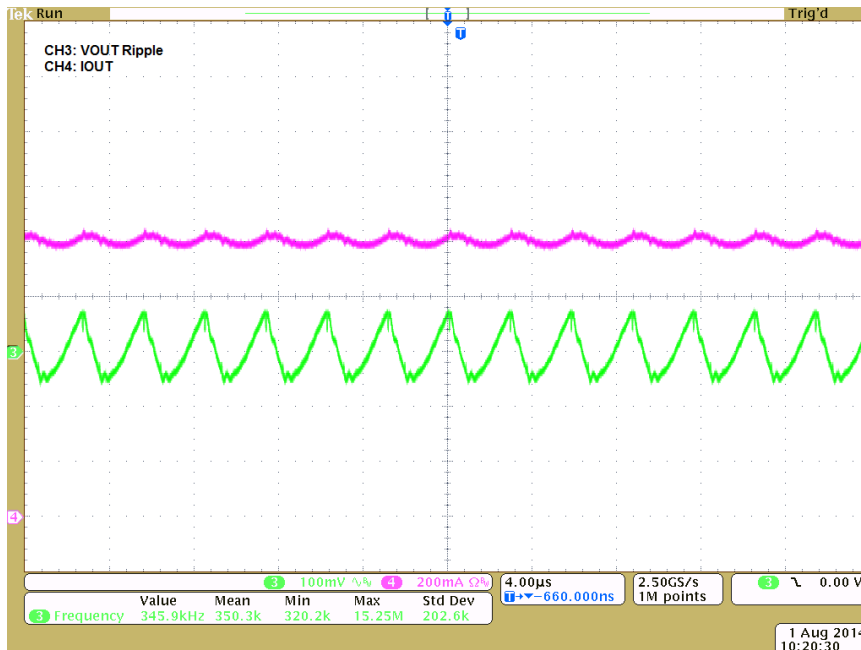


Figure 11. Output Voltage Ripple ($V_{IN} = 48\text{ V}$, $V_{OUT2} = 12\text{ V}$, $I_{OUT2} = 1\text{ A}$)

4.4 Transient Performance

Figure 12 shows the transient test result. Test condition is $V_{IN} = 48\text{ V}$, $V_{OUT2} = 12\text{ V}$, $I_{OUT2} = 0.5\text{-A}$ to 1-A step with $0.1\text{-A}/\mu\text{s}$ slew rate. In this design, loop analysis is not defined. Transient performance can also be optimized to achieve higher requirement.

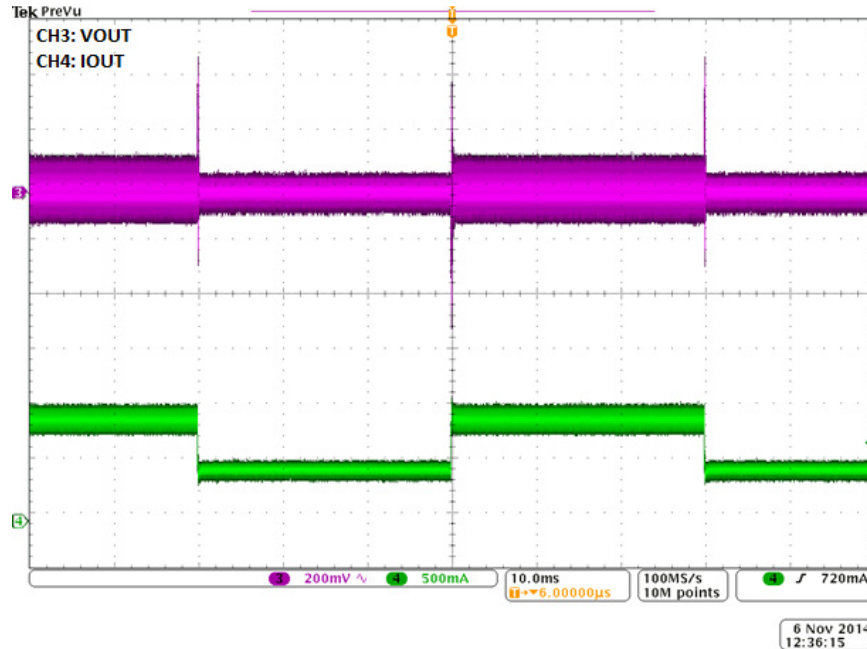


Figure 12. Transient Test ($V_{IN} = 48\text{ V}$, $V_{OUT2} = 12\text{ V}$, $I_{OUT2} = 0.5\text{ A}$ to 1 A , $0.1\text{ A}/\mu\text{s}$ Slew Rate)

5 Conclusion

An isolated flyback design with LM5160 using optocoupler can achieve better regulation performance. With optocoupler and compared with traditional isolated flyback solution, flyback topology has features like good regulation, higher frequency, smaller solution size, and better efficiency. Experiment results verify that good regulation performance can be achieved by using optocoupler in flyback topology.

Reference

- [1] LM5160 data sheet, [SNVSA03](#), Texas Instruments data sheet
- [2] LM5017: *100-V, 600-mA Constant On-Time Synchronous Buck*, Texas Instruments data sheet, [SNVS783G](#), January 2012, revised December 2013
- [3] *Designing an Isolated Buck (Flyback) Converter*, Texas Instruments Application Report, [SNVA674B](#), August 2012, revised May 2013
- [4] *D-CAP™ Mode With All-Ceramic Output Capacitor Application*, Texas Instruments Application Report, [SLVA453](#), February 2011
- [5] *Creating a Split-Rail Power Supply With a Wide Input Voltage Buck Regulator*, Texas Instruments Application Report, [SLVA369](#), October 2009

IMPORTANT NOTICE

Texas Instruments Incorporated and its subsidiaries (TI) reserve the right to make corrections, enhancements, improvements and other changes to its semiconductor products and services per JESD46, latest issue, and to discontinue any product or service per JESD48, latest issue. Buyers should obtain the latest relevant information before placing orders and should verify that such information is current and complete. All semiconductor products (also referred to herein as "components") are sold subject to TI's terms and conditions of sale supplied at the time of order acknowledgment.

TI warrants performance of its components to the specifications applicable at the time of sale, in accordance with the warranty in TI's terms and conditions of sale of semiconductor products. Testing and other quality control techniques are used to the extent TI deems necessary to support this warranty. Except where mandated by applicable law, testing of all parameters of each component is not necessarily performed.

TI assumes no liability for applications assistance or the design of Buyers' products. Buyers are responsible for their products and applications using TI components. To minimize the risks associated with Buyers' products and applications, Buyers should provide adequate design and operating safeguards.

TI does not warrant or represent that any license, either express or implied, is granted under any patent right, copyright, mask work right, or other intellectual property right relating to any combination, machine, or process in which TI components or services are used. Information published by TI regarding third-party products or services does not constitute a license to use such products or services or a warranty or endorsement thereof. Use of such information may require a license from a third party under the patents or other intellectual property of the third party, or a license from TI under the patents or other intellectual property of TI.

Reproduction of significant portions of TI information in TI data books or data sheets is permissible only if reproduction is without alteration and is accompanied by all associated warranties, conditions, limitations, and notices. TI is not responsible or liable for such altered documentation. Information of third parties may be subject to additional restrictions.

Resale of TI components or services with statements different from or beyond the parameters stated by TI for that component or service voids all express and any implied warranties for the associated TI component or service and is an unfair and deceptive business practice. TI is not responsible or liable for any such statements.

Buyer acknowledges and agrees that it is solely responsible for compliance with all legal, regulatory and safety-related requirements concerning its products, and any use of TI components in its applications, notwithstanding any applications-related information or support that may be provided by TI. Buyer represents and agrees that it has all the necessary expertise to create and implement safeguards which anticipate dangerous consequences of failures, monitor failures and their consequences, lessen the likelihood of failures that might cause harm and take appropriate remedial actions. Buyer will fully indemnify TI and its representatives against any damages arising out of the use of any TI components in safety-critical applications.

In some cases, TI components may be promoted specifically to facilitate safety-related applications. With such components, TI's goal is to help enable customers to design and create their own end-product solutions that meet applicable functional safety standards and requirements. Nonetheless, such components are subject to these terms.

No TI components are authorized for use in FDA Class III (or similar life-critical medical equipment) unless authorized officers of the parties have executed a special agreement specifically governing such use.

Only those TI components which TI has specifically designated as military grade or "enhanced plastic" are designed and intended for use in military/aerospace applications or environments. Buyer acknowledges and agrees that any military or aerospace use of TI components which have **not** been so designated is solely at the Buyer's risk, and that Buyer is solely responsible for compliance with all legal and regulatory requirements in connection with such use.

TI has specifically designated certain components as meeting ISO/TS16949 requirements, mainly for automotive use. In any case of use of non-designated products, TI will not be responsible for any failure to meet ISO/TS16949.

Products

Audio	www.ti.com/audio
Amplifiers	amplifier.ti.com
Data Converters	dataconverter.ti.com
DLP® Products	www.dlp.com
DSP	dsp.ti.com
Clocks and Timers	www.ti.com/clocks
Interface	interface.ti.com
Logic	logic.ti.com
Power Mgmt	power.ti.com
Microcontrollers	microcontroller.ti.com
RFID	www.ti-rfid.com
OMAP Applications Processors	www.ti.com/omap
Wireless Connectivity	www.ti.com/wirelessconnectivity

Applications

Automotive and Transportation	www.ti.com/automotive
Communications and Telecom	www.ti.com/communications
Computers and Peripherals	www.ti.com/computers
Consumer Electronics	www.ti.com/consumer-apps
Energy and Lighting	www.ti.com/energy
Industrial	www.ti.com/industrial
Medical	www.ti.com/medical
Security	www.ti.com/security
Space, Avionics and Defense	www.ti.com/space-avionics-defense
Video and Imaging	www.ti.com/video

TI E2E Community

e2e.ti.com