

# ***AN-2004 Replacing the CLC016 Reclocker with the LMH0026***

---

## **ABSTRACT**

This application report discusses the process of replacing the CLC016 reclocker with the LMH0026 reclocker.

---

### **Contents**

1	Introduction .....	2
2	How To Replace the CLC016 with the LMH0026 .....	2
	2.1 Input Interface .....	3
	2.2 Output Interface .....	4
	2.3 Loop Filter .....	4
	2.4 Rate Selection .....	4
	2.5 Other Features .....	4
3	LMH0026 Enhancements over the CLC016 .....	4

### **List of Figures**

1	CLC016 Typical Application .....	3
2	LMH0026 Typical Application .....	3

### **List of Tables**

1	CLC016 and LMH0026 Key Differences .....	2
---	--	---

## 1 Introduction

The LMH0026 SD-SDI reclocker can replace the CLC016 reclocker in many applications. The LMH0026 and CLC016 are both reclockers designed to recover and re-time data, primarily for the SMPTE 259M interface. Both reclockers are rated for industrial temperature range operation (-40°C to +85°C).

The LMH0026, the newer generation SDI reclocker, has advanced features and is pin compatible with the LMH0046 HD-SDI reclocker and the LMH0346 3G-SDI reclocker. This allows a forward migration path from SD to HD to 3G. The LMH0026 offers improved performance and extremely low output jitter (half the output jitter of the CLC016 at 270 Mbps). The LMH0026 also offers a lower supply voltage (3.3V), enabling system designers to migrate to lower-power designs. The LMH0026 provides a 37% power savings over the CLC016, with typical power of 330 mW in comparison with 525 mW for the CLC016.

Table 1 shows the key differences between the CLC016 and LMH0026.

**Table 1. CLC016 and LMH0026 Key Differences**

	CLC016	LMH0026
<b>Power Supply (V<sub>cc</sub>)</b>	5.0V	3.3V
<b>Package</b>	28-pin PLCC or TSSOP	20-pin e-TSSOP
<b>Data Rates</b>	40 to 400 Mbps	270 Mbps
<b>Output Jitter</b>	150 ps <sub>p-p</sub>	74 ps <sub>p-p</sub>
<b>ESD Rating</b>	≥±2 kV HBM	≥±7 kV HBM
<b>Input Interface</b>	2.5V to 5.0V common mode	1.2V to 3.3V common mode
<b>Output Structure</b>	Open collector, requires external 75Ω pullups to 5V	CML with internal 50Ω pullups (to 3.3V)
<b>Loop Filter</b>	Three Components: 0.1 μF capacitor, 82 pF capacitor, 500Ω resistor	Single 56 nF capacitor
<b>Rate Selection</b>	Four selectable rates, auto or manual rate select	Single 270 Mbps rate operation, automatically bypasses other rates
<b>Other Features</b>	Carrier detect	Bypass/Auto Bypass, choice of 2nd reclocked data output or clock

## 2 How To Replace the CLC016 with the LMH0026

Replacing the CLC016 with the LMH0026 requires a few simple steps. The device packages and pinouts are quite different so this change requires a new PCB layout. To replace the CLC016 with the LMH0026, follow these steps:

1. Change the power supply from 5V to 3.3V.
2. Replace the input termination with a single 100Ω differential termination, located close to the LMH0026 input pins. Check the output common mode voltage of the driving device to determine if it is compatible with the LMH0026 input common mode range—if not, add AC coupling capacitors in series with the input, prior to the 100Ω termination.
3. Removed the 75Ω pullups on the output and replace with a 100Ω differential termination located at the input of the next stage. The outputs may also be AC coupled, but no pullups are required.
4. Change the loop filter circuit to a single 56 nF capacitor between LF1 and LF2.
5. Add a 27 MHz crystal or suitable external clock reference. Connect the crystal between the XTAL IN/EXT CLK and XTAL OUT pins along with the 39 pF capacitors as shown in the typical application in the datasheet, or simply connect the 27 MHz external clock to the XTAL IN/EXT CLK pin.

Figure 1 shows the typical application for the CLC016, and Figure 2 shows the typical application for the LMH0026.

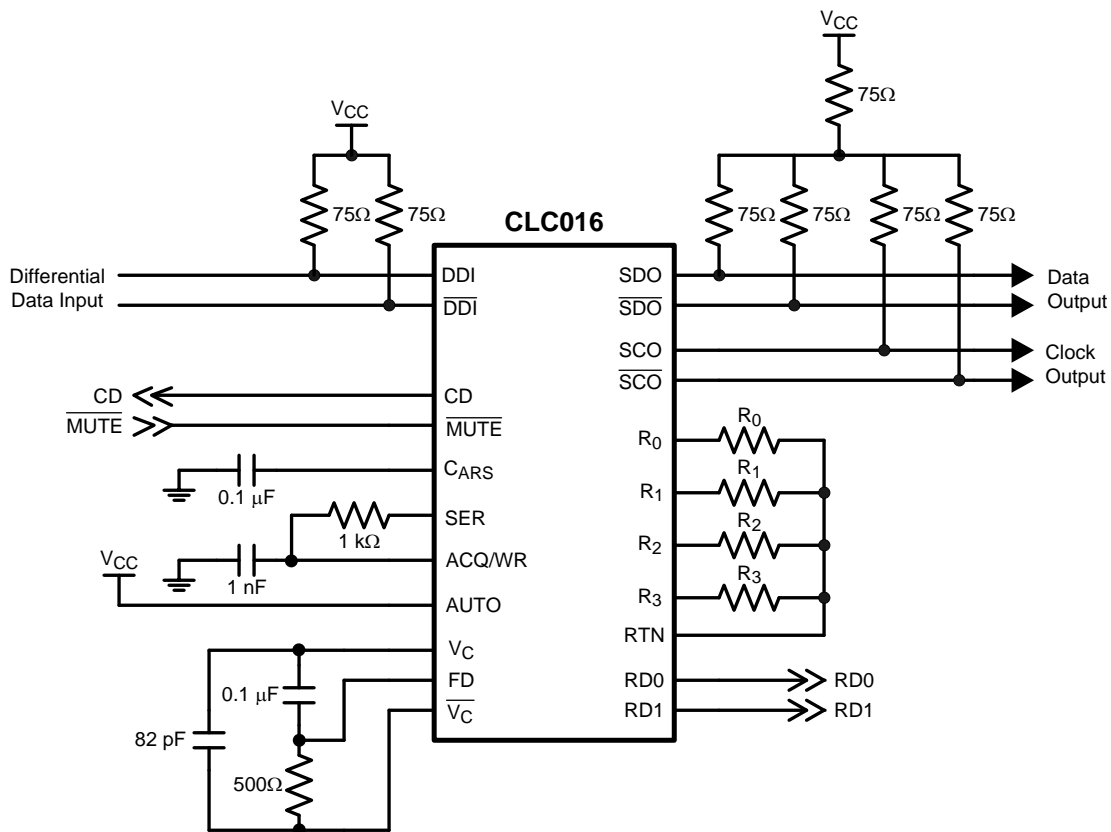


Figure 1. CLC016 Typical Application

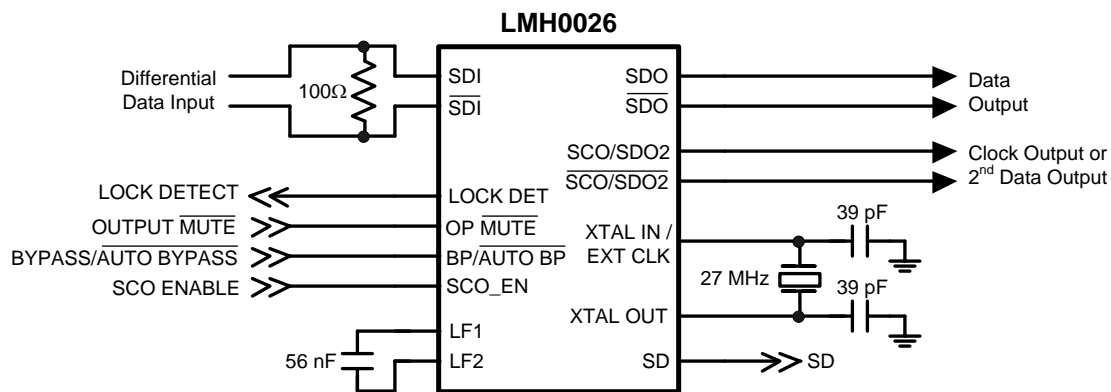


Figure 2. LMH0026 Typical Application

## 2.1 Input Interface

The input common mode voltage range of the CLC016 is between 2.5V and  $V_{CC}$  (5V), and the minimum differential input amplitude is 200 mV. When the CLC016 input is driven by an equalizer such as the CLC014 (with its open collector output), the CLC016 input interface will typically consist of 75Ω pullups to  $V_{CC}$ , as shown in Figure 1.

The LMH0026 input interface is similar to that of the CLC016, but better suited for interfacing to the 3.3V and lower supply voltages of current generation devices. The input common mode voltage range of the LMH0026 is from 1.2V to  $V_{CC}$  (3.3V), with the same minimum differential input amplitude as the CLC016. This input common mode voltage range allows DC coupling to many 3.3V and 2.5V devices.

## 2.2 Output Interface

The CLC016 outputs are open collector and require 75Ω pullups to 5V to generate an output voltage. This structure has some limitations when interfacing to non-5V systems. The CLC016 outputs are essentially cut off if the SDO output voltage drops below  $V_{CC}-1.6V$  (typically 3.4V), so this prevents DC-coupling to other 3.3V devices.

The LMH0026 provides much more flexibility. The LMH0026 outputs are CML with internal 50Ω pullups to 3.3V. They may be DC coupled to many more types of inputs, including the LMH0001 cable driver. Typically only a far-end differential termination (a simple resistor) is required. If the LMH0026 output common mode voltage is not compatible with the input common mode voltage of the receiving device, the outputs may be AC coupled. The outputs do not require pullups to  $V_{CC}$ .

## 2.3 Loop Filter

The CLC016 external loop filter circuit typically consists of a 1.0 μF capacitor, an 82 pF capacitor, and a 500Ω resistor. These components define the overall jitter transfer function and control the acquisition performance of the PLL, and may be changed to affect these parameters. For the LMH0026, the external loop filter should consist of a single 56 nF capacitor only. The LMH0026 loop filter was designed and optimized for a 56 nF capacitor and it should not be changed.

## 2.4 Rate Selection

The CLC016 can be configured to recognize up to four different data rates (between 40 Mbps and 400 Mbps) using external resistors, and can further be set to automatically detect between these four rates or manually configured for the desired rate. The LMH0026 supports a single 270 Mbps data rate, and bypasses other data rates up to 1.5 Gbps. The LMH0026 also requires an external 27 MHz reference clock (crystal or suitable external reference) which is not necessary for the CLC016, but this allows for its superior performance: the LMH0026 has typical output jitter of 0.02 UI at 270 Mbps (with 0.2 UI input jitter) vs. typical output jitter of 0.04 UI at 270 Mbps for the CLC016.

## 2.5 Other Features

The CLC016 includes an input Carrier Detect (CD) signal to indicate the presence of transitions at the input. In typical CLC016 applications, CD is tied to MUTE to latch the output when no input signal is present. The LMH0026 does not provide an input carrier detector, but it does provide a robust LOCK DETECT signal to indicate that data is being received and the PLL is locked. LOCK DETECT may be connected to OUTPUT MUTE to mute the data and clock outputs when no valid data is being received.

The LMH0026 includes advanced features not present in the CLC016. The LMH0026 includes a BYPASS/AUTO BYPASS function which can be used to either force the reclocker to output all data without reclocking it, or automatically bypass only unsupported data rates while reclocking 270 Mbps data. The LMH0026 also provides the option of either a second reclocked data output or the serial data rate clock (the CLC016 only provides the clock and has no option for a second data output).

## 3 LMH0026 Enhancements over the CLC016

The LMH0026 is a solid upgrade and good replacement for the CLC016. It is designed in a newer, more advanced process. The LMH0026 offers lower power, lower jitter, better ESD protection, a more flexible output interface, and new features such as a reclocker bypass and a second reclocked data output. The LMH0026's smaller, space-saving package allows for more compact designs. The PCB layout is simpler as the LMH0026 requires less PCB components overall than the CLC016. In addition, the LMH0026's pin compatibility with HD-SDI and 3G-SDI equalizers offers an easy upgrade path and allows future-proof designs.

## IMPORTANT NOTICE

Texas Instruments Incorporated and its subsidiaries (TI) reserve the right to make corrections, enhancements, improvements and other changes to its semiconductor products and services per JESD46, latest issue, and to discontinue any product or service per JESD48, latest issue. Buyers should obtain the latest relevant information before placing orders and should verify that such information is current and complete. All semiconductor products (also referred to herein as "components") are sold subject to TI's terms and conditions of sale supplied at the time of order acknowledgment.

TI warrants performance of its components to the specifications applicable at the time of sale, in accordance with the warranty in TI's terms and conditions of sale of semiconductor products. Testing and other quality control techniques are used to the extent TI deems necessary to support this warranty. Except where mandated by applicable law, testing of all parameters of each component is not necessarily performed.

TI assumes no liability for applications assistance or the design of Buyers' products. Buyers are responsible for their products and applications using TI components. To minimize the risks associated with Buyers' products and applications, Buyers should provide adequate design and operating safeguards.

TI does not warrant or represent that any license, either express or implied, is granted under any patent right, copyright, mask work right, or other intellectual property right relating to any combination, machine, or process in which TI components or services are used. Information published by TI regarding third-party products or services does not constitute a license to use such products or services or a warranty or endorsement thereof. Use of such information may require a license from a third party under the patents or other intellectual property of the third party, or a license from TI under the patents or other intellectual property of TI.

Reproduction of significant portions of TI information in TI data books or data sheets is permissible only if reproduction is without alteration and is accompanied by all associated warranties, conditions, limitations, and notices. TI is not responsible or liable for such altered documentation. Information of third parties may be subject to additional restrictions.

Resale of TI components or services with statements different from or beyond the parameters stated by TI for that component or service voids all express and any implied warranties for the associated TI component or service and is an unfair and deceptive business practice. TI is not responsible or liable for any such statements.

Buyer acknowledges and agrees that it is solely responsible for compliance with all legal, regulatory and safety-related requirements concerning its products, and any use of TI components in its applications, notwithstanding any applications-related information or support that may be provided by TI. Buyer represents and agrees that it has all the necessary expertise to create and implement safeguards which anticipate dangerous consequences of failures, monitor failures and their consequences, lessen the likelihood of failures that might cause harm and take appropriate remedial actions. Buyer will fully indemnify TI and its representatives against any damages arising out of the use of any TI components in safety-critical applications.

In some cases, TI components may be promoted specifically to facilitate safety-related applications. With such components, TI's goal is to help enable customers to design and create their own end-product solutions that meet applicable functional safety standards and requirements. Nonetheless, such components are subject to these terms.

No TI components are authorized for use in FDA Class III (or similar life-critical medical equipment) unless authorized officers of the parties have executed a special agreement specifically governing such use.

Only those TI components which TI has specifically designated as military grade or "enhanced plastic" are designed and intended for use in military/aerospace applications or environments. Buyer acknowledges and agrees that any military or aerospace use of TI components which have **not** been so designated is solely at the Buyer's risk, and that Buyer is solely responsible for compliance with all legal and regulatory requirements in connection with such use.

TI has specifically designated certain components as meeting ISO/TS16949 requirements, mainly for automotive use. In any case of use of non-designated products, TI will not be responsible for any failure to meet ISO/TS16949.

### Products

Audio	<a href="http://www.ti.com/audio">www.ti.com/audio</a>
Amplifiers	<a href="http://amplifier.ti.com">amplifier.ti.com</a>
Data Converters	<a href="http://dataconverter.ti.com">dataconverter.ti.com</a>
DLP® Products	<a href="http://www.dlp.com">www.dlp.com</a>
DSP	<a href="http://dsp.ti.com">dsp.ti.com</a>
Clocks and Timers	<a href="http://www.ti.com/clocks">www.ti.com/clocks</a>
Interface	<a href="http://interface.ti.com">interface.ti.com</a>
Logic	<a href="http://logic.ti.com">logic.ti.com</a>
Power Mgmt	<a href="http://power.ti.com">power.ti.com</a>
Microcontrollers	<a href="http://microcontroller.ti.com">microcontroller.ti.com</a>
RFID	<a href="http://www.ti-rfid.com">www.ti-rfid.com</a>
OMAP Applications Processors	<a href="http://www.ti.com/omap">www.ti.com/omap</a>
Wireless Connectivity	<a href="http://www.ti.com/wirelessconnectivity">www.ti.com/wirelessconnectivity</a>

### Applications

Automotive and Transportation	<a href="http://www.ti.com/automotive">www.ti.com/automotive</a>
Communications and Telecom	<a href="http://www.ti.com/communications">www.ti.com/communications</a>
Computers and Peripherals	<a href="http://www.ti.com/computers">www.ti.com/computers</a>
Consumer Electronics	<a href="http://www.ti.com/consumer-apps">www.ti.com/consumer-apps</a>
Energy and Lighting	<a href="http://www.ti.com/energy">www.ti.com/energy</a>
Industrial	<a href="http://www.ti.com/industrial">www.ti.com/industrial</a>
Medical	<a href="http://www.ti.com/medical">www.ti.com/medical</a>
Security	<a href="http://www.ti.com/security">www.ti.com/security</a>
Space, Avionics and Defense	<a href="http://www.ti.com/space-avionics-defense">www.ti.com/space-avionics-defense</a>
Video and Imaging	<a href="http://www.ti.com/video">www.ti.com/video</a>

### TI E2E Community

[e2e.ti.com](http://e2e.ti.com)