

AN-1822 LMH6733 High Definition Video Transmission Over CAT5

ABSTRACT

Sending component 1080i high definition (HD) video over CAT5 twisted-pair is achievable with a low-cost solution using Texas Instruments current feedback (CFB) LMH6733 operational amplifier. The LMH6733 is a triple operational amplifier with disable that has a slew rate of 1900 V/ μ s and a 2 V_{PP} output signal bandwidth of 480 MHz, making it ideal for this application. Component video signals are made up of luma (Y) signal that contains the brightness and synchronizing information, and the two color-difference signals Pr and Pb.

Contents

| | | |
|-----|--|---|
| 1 | Introduction | 2 |
| 2 | Video Transmitter | 2 |
| 3 | Video Receiver and Equalization | 3 |
| 4 | Power Supply and Signal Coupling | 8 |
| 4.1 | Transmit Board Modifications for AC-Coupling | 8 |
| 4.2 | Receive and Equalization Board Modifications for AC-Coupling | 8 |

List of Figures

| | | |
|---|--|---|
| 1 | CAT5 Cable Attenuation | 2 |
| 2 | Twisted Pair Video Driver | 2 |
| 3 | Video Transmission Block Diagram | 3 |
| 4 | CAT5 Transmit Board | 3 |
| 5 | CAT5 Video Receiver and Equalization Circuit | 4 |
| 6 | Equalization Circuitry for Various CAT5 Cable Lengths | 5 |
| 7 | Entire Equalization Circuitry Block Diagram | 6 |
| 8 | Receiver and Equalization Reference Board | 7 |
| 9 | LMH2734 Circuit and Equations for -5 V Supply Generation | 8 |

List of Tables

| | | |
|---|-------------------------------------|---|
| 1 | RC Network Equalization Table | 5 |
| 2 | Equalization Switch Table | 7 |

1 Introduction

Standard CAT5 cable consists of 4 twisted-pairs of AWG-24 cables with characteristic impedance of 100 Ω . The DC resistance is 10 Ω /100m and capacitance of 4.5 nF/100m. Attenuation within CAT5 cable increases exponentially with respect to cable length and is a concern that will be addressed with equalization. [Figure 1](#) illustrates this loss at various cable lengths.

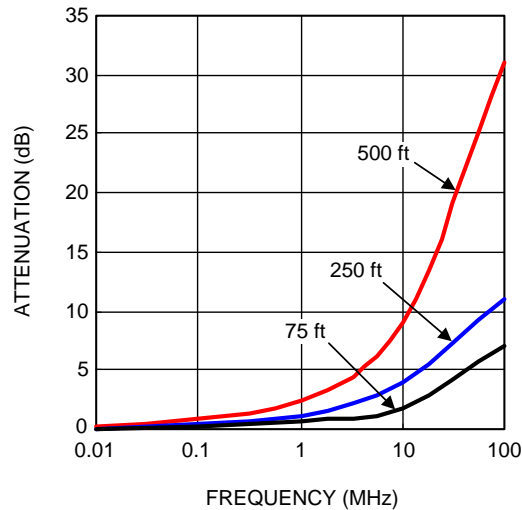


Figure 1. CAT5 Cable Attenuation

By utilizing 3 of the 4 twisted-pairs, the entire signal path can be designed using the LMH6733 amplifier for the driver, receiver, and equalizer circuits to drive 75 ft, 250 ft, and 500 ft of CAT5 cable. [Figure 3](#) shows the block diagram consisting of all three circuit sections. Each circuit section will be explained in further detail in this application report

2 Video Transmitter

The video transmit board has one LMH6733 device configured to drive component video input from an HD video source onto selectable CAT5 cable lengths of 75 ft, 250 ft, and 500 ft. The cable length select switch is located on the video receive board. [Figure 2](#) shows one channel of the LMH6733 configured for a gain of 2 V/V to drive one CAT5 twisted-pair. The 50 Ω output series resistor isolates the device from the long CAT5 transmission twisted-pair with one of the wires connected to ground through a 50 Ω resistor to balance the load.

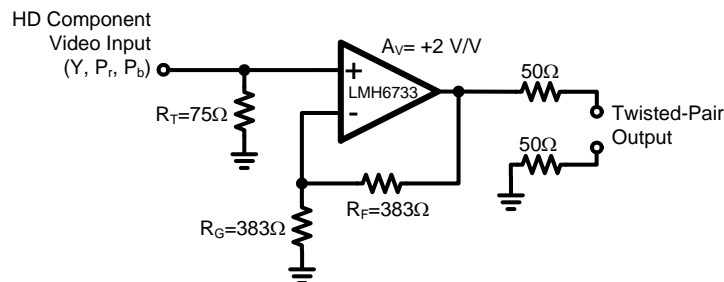


Figure 2. Twisted Pair Video Driver

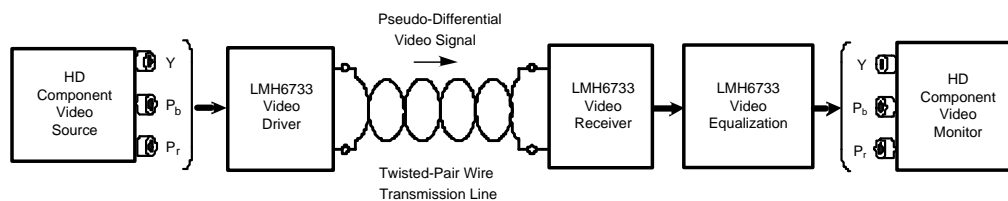


Figure 3. Video Transmission Block Diagram

Figure 4 shows the video transmit reference design board with a RCA connector for connecting the 1080i video source and a RJ45 connector to connect the CAT5 cable. The board has several options to apply power. For more details, see Section 4.

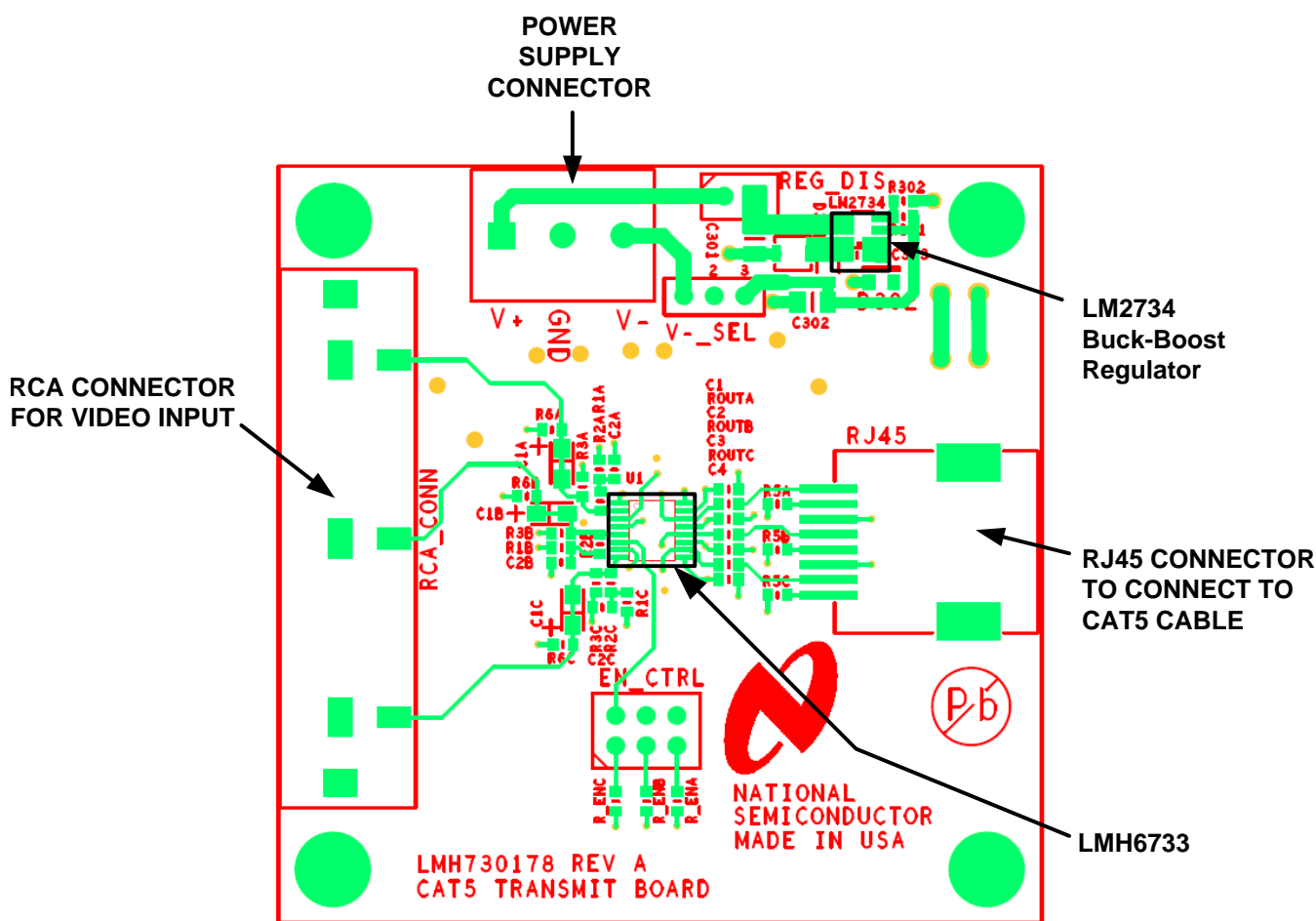


Figure 4. CAT5 Transmit Board

3 Video Receiver and Equalization

The video receiver board has one LMH6733 device to function as a differential input signal receiver and three additional LMH6733 devices to perform signal equalization for cable lengths of 75 ft, 250 ft, and 500 ft. Each channel of the LMH6733 receiver device is configured for a gain of $-2 V/V$ to handle a differential input signal from the three twisted-pairs for the Y, Pr, and Pb video signals. A first order RC, low-pass filter with a -3 dB roll-off of 200 MHz is placed between the receiver output and equalizer input to filter out high frequency noise components.

Due to the non-inverting input capacitance of 1 pF, an inverting gain topology is recommended for the equalization circuit to minimize gain peaking and potential oscillation due to excessive parasitic capacitance and inductance associated with device package and board routing. The equalization circuit is implemented with an additional LMH6733 channel along with a network of RC branches in parallel with the gain resistor, R_G , to provide a zero-pole compensation for attenuation of higher frequency signals in the CAT5 twisted-pair wires. Each branch compensates for the set frequency of attenuation depending on the cable length, such that the video signal maintains a flat frequency response to accommodate the 31 MHz of large signal bandwidth required for 1080i HD signal. For example, to transmit HD video signal up to 500 ft of CAT5 cable the three set frequencies are approximately 2.5 MHz, 9 MHz, and 31 MHz, respectively. Because of its high slew rate value, the advantage of using CFB amplifiers as the equalizer is its ability to boost equalization gain at high frequencies. The output of the equalizer drives a $R_O = 75 \Omega$ load to match the input impedance of the video display. Figure 5 shows the circuit implementation of one receive channel driving one equalization channel.

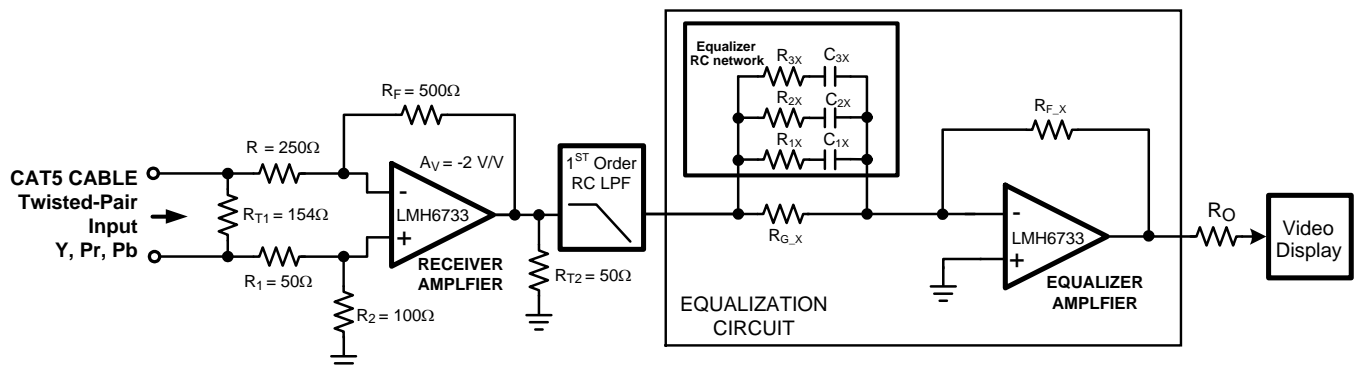


Figure 5. CAT5 Video Receiver and Equalization Circuit

Figure 6 shows the details of the equalization circuit configured to equalize one of the component video signals Y, Pr, or Pb. However, the entire equalization circuitry is made up of three LMH6733 devices for Y, Pr, and Pb signals and is shown in Figure 7. Each channel of the LMH6733 is optimized through the RC network to drive CAT5 cable lengths of 75 ft, 250 ft, and 500 ft.

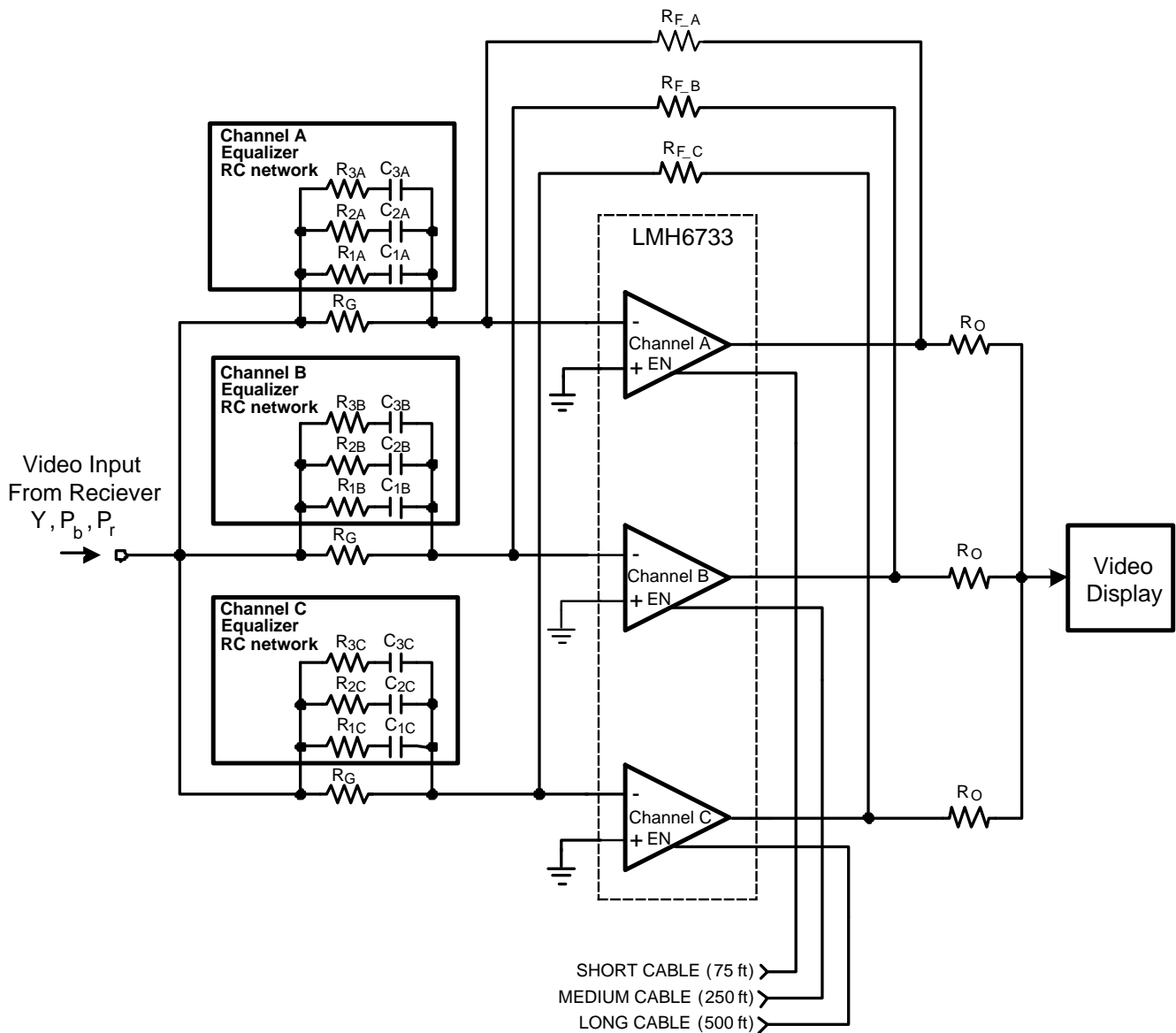


Figure 6. Equalization Circuitry for Various CAT5 Cable Lengths

Table 1. RC Network Equalization Table

| RF | RG | Channel A: 75 ft CAT5 | | Channel B: 250 ft CAT5 | | Channel C: 500 ft CAT5 | |
|-------|-------|------------------------|------------------------|---------------------------|--------------------------|-------------------------|--------------------------|
| 550 Ω | 383 Ω | R _{1A} = OPEN | C _{1A} = OPEN | R _{1B} = 200 Ω | C _{1B} = 68 pF | R _{1C} = 25 Ω | C _{1C} = 120 pF |
| | | R _{2A} = OPEN | C _{2A} = OPEN | R _{2B} = 1.35 kΩ | C _{2B} = 1.5 pF | R _{2C} = 700 Ω | C _{2C} = 1.8 pF |
| | | R _{3A} = OPEN | C _{3A} = OPEN | R _{3B} = 8.4 kΩ | C _{3B} = 18 pF | R _{3C} = 909 Ω | C _{3C} = 47 pF |

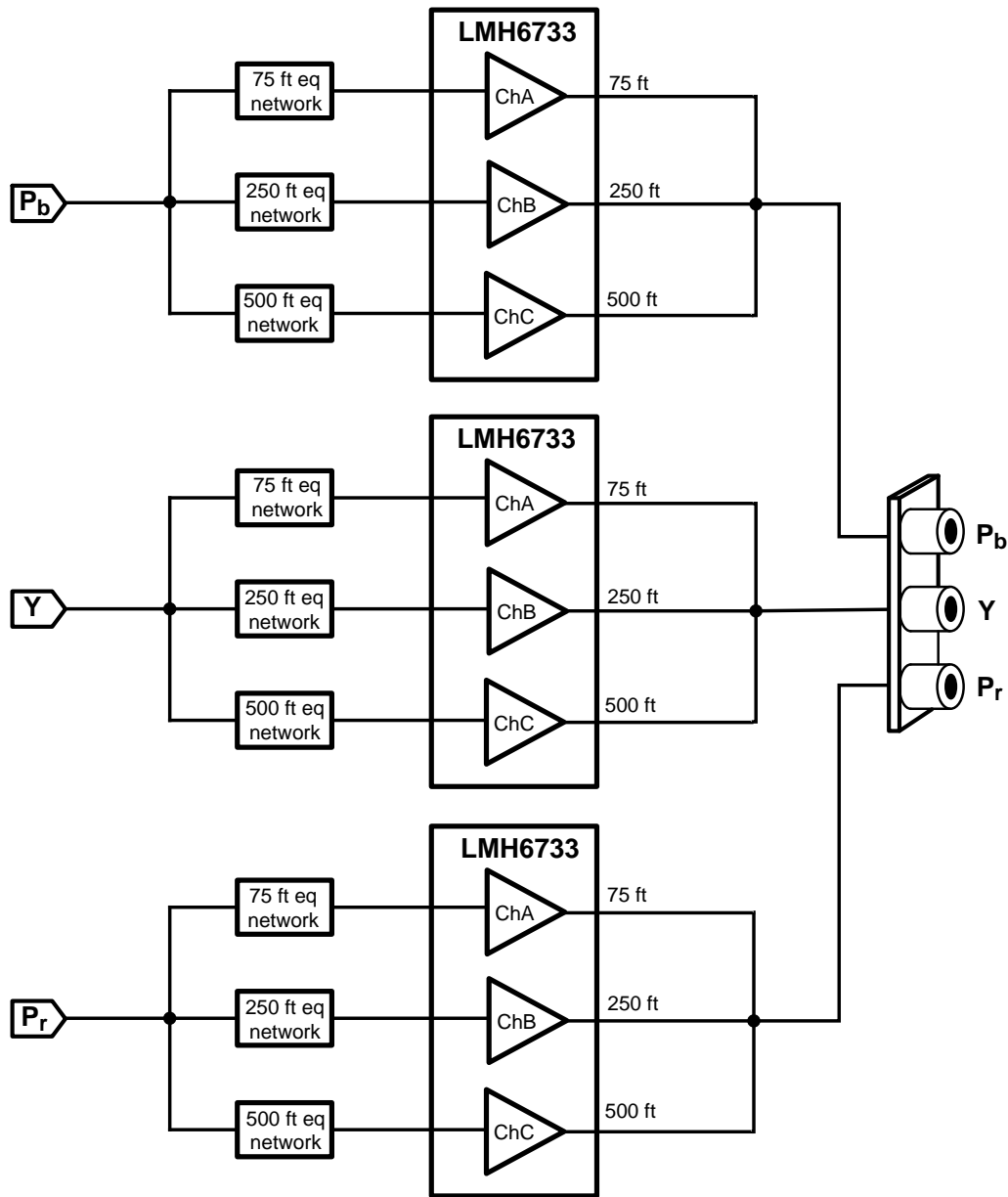


Figure 7. Entire Equalization Circuitry Block Diagram

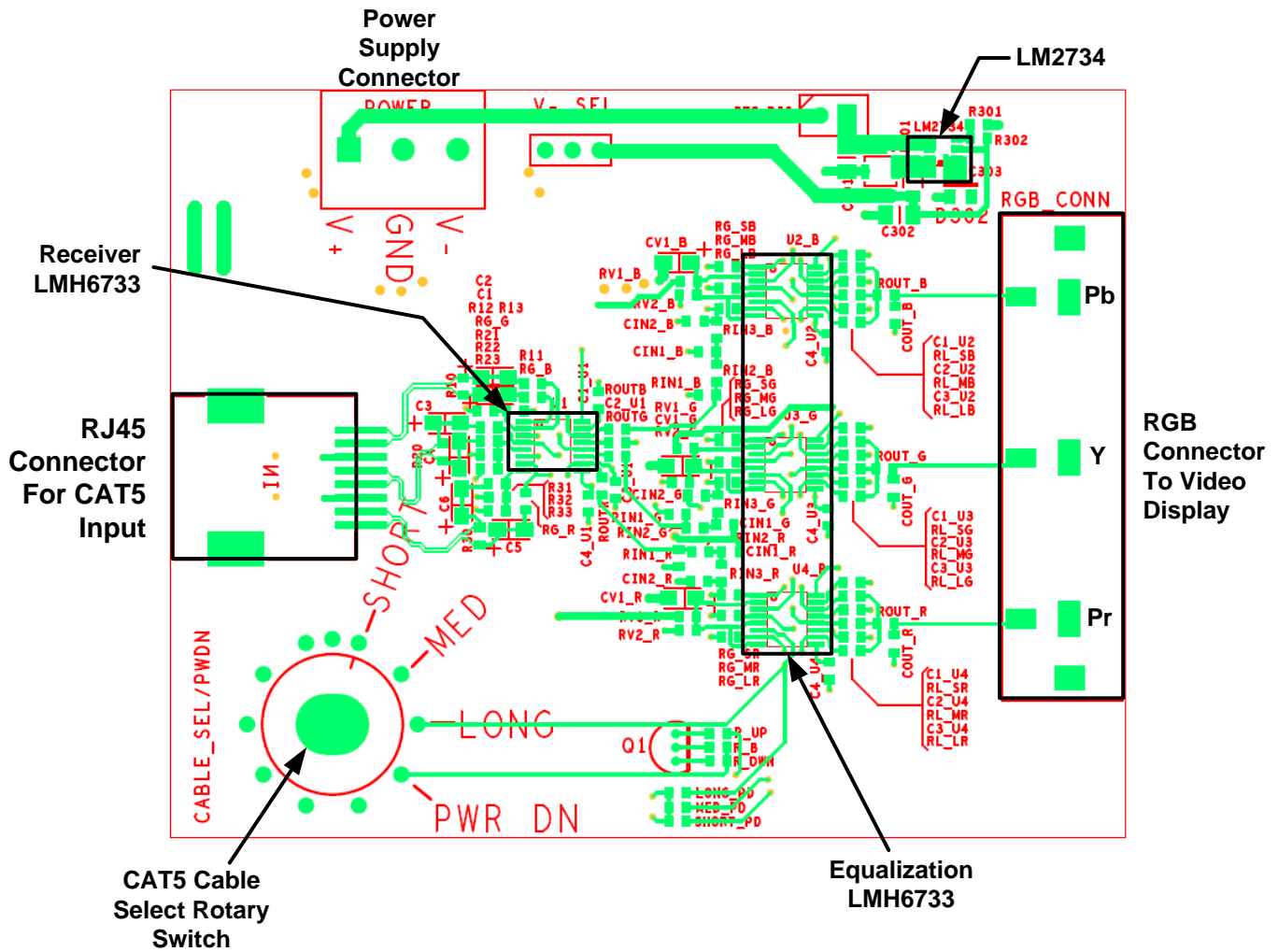


Figure 8. Receiver and Equalization Reference Board

Only one channel of equalization can be enabled by positioning the rotary switch to SHORT, MEDIUM, or LONG to select the desired length of CAT5 to equalize. Enabling of the channels is achieved by connection DISA, DISB, or DISC to +5 V. The other two channels are disabled by a 1 kΩ pull down resistor. For example, when SHORT is selected for a maximum cable length of 75 ft, channel A of all three LMH6733 equalization devices are enabled while channels B and C of all three devices are disabled. The output can be sent to a video monitoring device through the RCA connector with indicators green-Y, red-Pr, and blue-Pb. Table 2 shows the switch positions, CAT5 cable lengths, and associated amplifier channels.

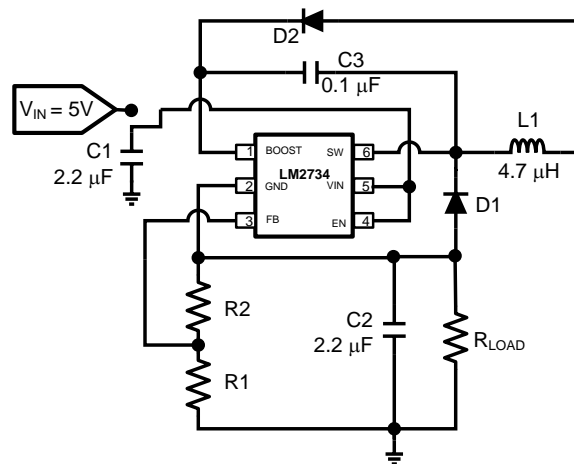
Table 2. Equalization Switch Table

| Rotary Switch Position | Maximum CAT5 Cable Length | LMH6733 Channel Enabled |
|------------------------|---------------------------|-------------------------|
| SHORT | 75 ft | A |
| MEDIUM | 250 ft | B |
| LONG | 500 ft | C |

Output resistors, R_O , are positioned to isolate the enabled channel from parasitic capacitance of the disabled channels. Each disabled channel may add up to 2 pF of capacitance to the enabled channel and may cause the circuit to oscillate. To achieve an overall cascaded gain of +2 V/V for the receiver and equalization amplifiers, the equalizer amplifier should have a gain of -1 V/V. However, due to the signal attenuation by the low-pass filters, R_O , and R_L the gain is increased slightly to -1.4 V/V, thus, making $R_G = 383 \Omega$ and $R_F = 550 \Omega$

4 Power Supply and Signal Coupling

Both reference boards have the capability to be configured for either DC or AC coupled applications. If the desired signal path is to be DC-coupled, there are two power supply options. Option one is to connect a single +5 V power supply and have the LM2734 buck-boost regulator generate the -5 V supply voltage to power the LMH6733 amplifier(s) with jumpers on REG_DIS and V^- _SEL set for regulator output REG_OUT. Figure 9 shows the LM2734 circuit and equations. From the equations, if $R_2 = 750 \Omega$ and $|V_O| = 5 \text{ V}$, then $R_1 = 4 \text{ k}\Omega$ by calculation. The second option is to bypass the LM2734 regulator and directly power the board with +5 V and -5 V supplies using the three terminal power supply connector with a jumper on V^- _SEL set for external negative supply EXT V^- . The third option is to bypass both the LM2734 regulator and use a single +5 V power supply. For this option, modifications to the board have to be made to AC couple and appropriately bias the inputs of the LMH6733 device.



$$(1) V_C = V_{\text{BOOST}} = (V_O + V_{D1}) - V_O$$

$$(2) i_{fd} = \frac{0.8}{R_2}$$

$$(3) V_O = i_{fb} \times (R_2 + R_1)$$

Figure 9. LMH2734 Circuit and Equations for -5 V Supply Generation

4.1 Transmit Board Modifications for AC-Coupling

1. Cut traces on C1A, C1B, and C1C. Replace with 47 μF tantalum capacitors.
2. Add 1 $\text{k}\Omega$ resistors for R1A, R1B, R1C, R2A, R2B, and R2C.
3. Add 1.5 μF tantalum capacitors for C2A, C2B, and C2C.
4. Add 2 $\text{k}\Omega$ resistors for R3A, R3B, and R3C.
5. Add 766 Ω resistors for R4A, R4B, and R4C. Replace RGA, RGB, and RGC resistor value of 383 Ω with 766 Ω .

4.2 Receive and Equalization Board Modifications for AC-Coupling

1. Cut traces on C1-C6. Replace with 4.7 μF tantalum capacitors.
2. Add 200 Ω resistor for R13, R23, and R33. Replace 100 Ω resistors R12, R22, and R32 with 200 Ω .
3. Replace R, R, and R with 470 μF tantalum capacitors.

IMPORTANT NOTICE

Texas Instruments Incorporated and its subsidiaries (TI) reserve the right to make corrections, enhancements, improvements and other changes to its semiconductor products and services per JESD46, latest issue, and to discontinue any product or service per JESD48, latest issue. Buyers should obtain the latest relevant information before placing orders and should verify that such information is current and complete. All semiconductor products (also referred to herein as "components") are sold subject to TI's terms and conditions of sale supplied at the time of order acknowledgment.

TI warrants performance of its components to the specifications applicable at the time of sale, in accordance with the warranty in TI's terms and conditions of sale of semiconductor products. Testing and other quality control techniques are used to the extent TI deems necessary to support this warranty. Except where mandated by applicable law, testing of all parameters of each component is not necessarily performed.

TI assumes no liability for applications assistance or the design of Buyers' products. Buyers are responsible for their products and applications using TI components. To minimize the risks associated with Buyers' products and applications, Buyers should provide adequate design and operating safeguards.

TI does not warrant or represent that any license, either express or implied, is granted under any patent right, copyright, mask work right, or other intellectual property right relating to any combination, machine, or process in which TI components or services are used. Information published by TI regarding third-party products or services does not constitute a license to use such products or services or a warranty or endorsement thereof. Use of such information may require a license from a third party under the patents or other intellectual property of the third party, or a license from TI under the patents or other intellectual property of TI.

Reproduction of significant portions of TI information in TI data books or data sheets is permissible only if reproduction is without alteration and is accompanied by all associated warranties, conditions, limitations, and notices. TI is not responsible or liable for such altered documentation. Information of third parties may be subject to additional restrictions.

Resale of TI components or services with statements different from or beyond the parameters stated by TI for that component or service voids all express and any implied warranties for the associated TI component or service and is an unfair and deceptive business practice. TI is not responsible or liable for any such statements.

Buyer acknowledges and agrees that it is solely responsible for compliance with all legal, regulatory and safety-related requirements concerning its products, and any use of TI components in its applications, notwithstanding any applications-related information or support that may be provided by TI. Buyer represents and agrees that it has all the necessary expertise to create and implement safeguards which anticipate dangerous consequences of failures, monitor failures and their consequences, lessen the likelihood of failures that might cause harm and take appropriate remedial actions. Buyer will fully indemnify TI and its representatives against any damages arising out of the use of any TI components in safety-critical applications.

In some cases, TI components may be promoted specifically to facilitate safety-related applications. With such components, TI's goal is to help enable customers to design and create their own end-product solutions that meet applicable functional safety standards and requirements. Nonetheless, such components are subject to these terms.

No TI components are authorized for use in FDA Class III (or similar life-critical medical equipment) unless authorized officers of the parties have executed a special agreement specifically governing such use.

Only those TI components which TI has specifically designated as military grade or "enhanced plastic" are designed and intended for use in military/aerospace applications or environments. Buyer acknowledges and agrees that any military or aerospace use of TI components which have **not** been so designated is solely at the Buyer's risk, and that Buyer is solely responsible for compliance with all legal and regulatory requirements in connection with such use.

TI has specifically designated certain components as meeting ISO/TS16949 requirements, mainly for automotive use. In any case of use of non-designated products, TI will not be responsible for any failure to meet ISO/TS16949.

Products

| | |
|------------------------------|--|
| Audio | www.ti.com/audio |
| Amplifiers | amplifier.ti.com |
| Data Converters | dataconverter.ti.com |
| DLP® Products | www.dlp.com |
| DSP | dsp.ti.com |
| Clocks and Timers | www.ti.com/clocks |
| Interface | interface.ti.com |
| Logic | logic.ti.com |
| Power Mgmt | power.ti.com |
| Microcontrollers | microcontroller.ti.com |
| RFID | www.ti-rfid.com |
| OMAP Applications Processors | www.ti.com/omap |
| Wireless Connectivity | www.ti.com/wirelessconnectivity |

Applications

| | |
|-------------------------------|--|
| Automotive and Transportation | www.ti.com/automotive |
| Communications and Telecom | www.ti.com/communications |
| Computers and Peripherals | www.ti.com/computers |
| Consumer Electronics | www.ti.com/consumer-apps |
| Energy and Lighting | www.ti.com/energy |
| Industrial | www.ti.com/industrial |
| Medical | www.ti.com/medical |
| Security | www.ti.com/security |
| Space, Avionics and Defense | www.ti.com/space-avionics-defense |
| Video and Imaging | www.ti.com/video |

TI E2E Community

e2e.ti.com