

# How to Extend Buck Regulator to Positive Buck-boost Configuration

Gavin Wang, Daniel Li

## ABSTRACT

The Texas Instruments LMR140X0 series of buck regulators are monolithic integrated circuits with an internal MOSFET switch. The LMR140X0 device is widely used in automotive and industrial applications. But in some applications, a positive buck-boost function is needed. This application report introduces how to extend buck regulator to positive buck-boost configuration.

First, this report describes the working principle of this positive buck-boost converter. Second, methods are presented for protecting the gate in high-input voltage condition and for calculating the output current in full load. Finally, bench test is provided to verify the theories.

## Contents

1	Introduction of LMR140X0 Series .....	2
2	Working Principle of Positive Buck-boost Converter .....	2
3	How to Protect the Gate in High-Input Voltage Condition .....	3
4	Bench Verification .....	4
5	Conclusion .....	7
6	References .....	7

## List of Figures

1	Positive Buck-boost Converter .....	2
2	The Equivalent Circuit [t0-t1] .....	2
3	The Equivalent Circuit [t1-t2] .....	3
4	The Related Waveforms .....	3
5	The Protection Circuit .....	4
6	LMR14050 Buck-boost Schematic .....	4
7	Waveforms for $V_{in} = 9\text{ V}$ , $V_{out} = 12\text{ V} / 2\text{ A}$ .....	5
8	Waveforms for $V_{in} = 36\text{ V}$ , $V_{out} = 12\text{ V} / 2.5\text{ A}$ .....	5
9	Waveforms for $V_{in} = 9\text{ V}$ , $V_{out} = 12\text{ V} / 0.2\text{ A}$ .....	5
10	Waveforms for $V_{in} = 36\text{ V}$ , $V_{out} = 12\text{ V} / 0.2\text{ A}$ .....	6
11	The Output Current in Full Load .....	6
12	Loop Measurement Result .....	6
13	Load Transient Response .....	7

## List of Tables

1	Specifications.....	4
---	---------------------	---

## 1 Introduction of LMR140X0 Series

The LMR140X0 is a 40-V step-down regulator with an integrated high-side MOSFET. With a wide input range, it is suitable for various applications from industrial to automotive. The quiescent current of the regulator is 40  $\mu\text{A}$  in sleep mode, and ultra-low 1  $\mu\text{A}$  current in shutdown mode can further prolong battery life.

The device has built-in protection features such as cycle-by-cycle current limit, thermal sensing and shutdown, and output overvoltage protection. Internal loop compensation means that the user is free from the tedious task of loop compensation design. A precision enable input allows simplification of regulator control and system power sequencing.

## 2 Working Principle of Positive Buck-boost Converter

Figure 1 shows the topology of buck-boost. This configuration contains two MOSFETs and two diodes connected with one inductor. This buck-boost topology maintains output voltage regulation when the input voltage is either less than or greater than the output voltage, making it especially suitable for some typical applications.

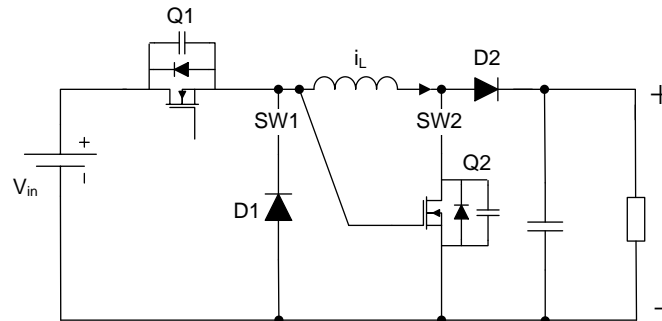


Figure 1. Positive Buck-boost Converter

During  $[t_0-t_1]$ , Q1 and Q2 turn on. Figure 2 shows the equivalent circuit.

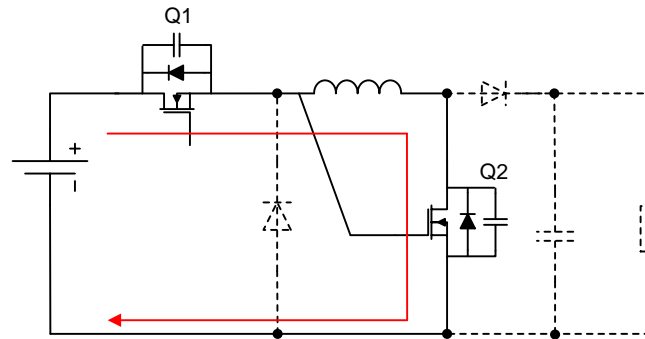


Figure 2. The Equivalent Circuit  $[t_0-t_1]$

During  $[t_1-t_2]$ , Q1 and Q2 turn off. Figure 3 shows the equivalent circuit.

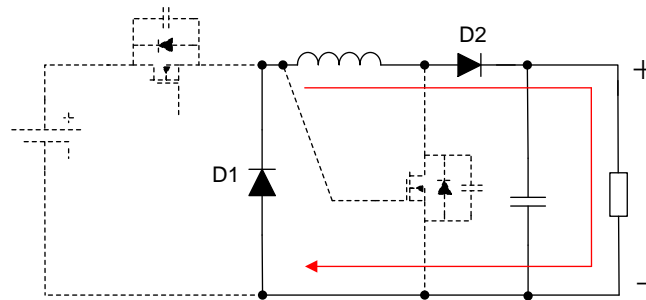


Figure 3. The Equivalent Circuit [t1-t2]

Figure 4 shows the waveforms for SW1, SW2, and inductor current  $i_L$ .

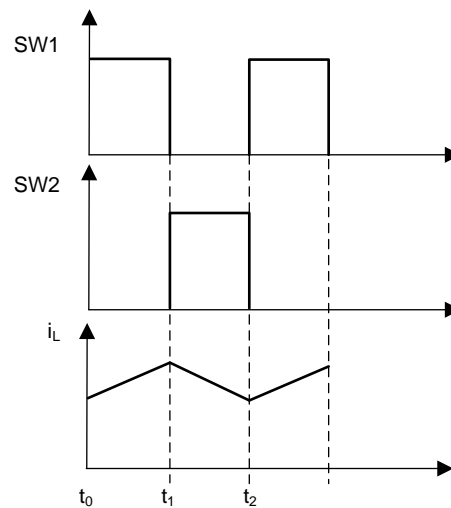


Figure 4. The Related Waveforms

From the equivalent circuit, the output voltage can be derived in Equation 1.

$$V_o = V_{in} \frac{D}{1-D} \tag{1}$$

Where D is the duty cycle.

If  $D > 0.5$ , the output voltage can be regulated when the input voltage is less than the output voltage.

If  $D < 0.5$ , the output voltage can be regulated when the input voltage is greater than the output voltage.

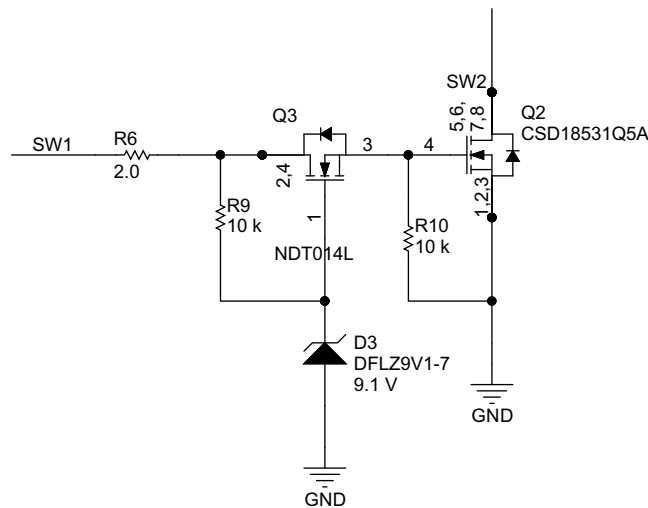
So when the duty cycle changes, this configuration can realize positive buck-boost function. Every buck regulator has output current limit. But the output current in full load for this positive buck-boost configuration is different. Assuming the buck regulator has maximum output limit  $I_{buck}$ , Equation 2 shows the output current in full load.

$$I_o = I_{buck} (1-D) = I_{buck} \left(1 - \frac{V_{out}}{V_{in} + V_{out}}\right) \tag{2}$$

### 3 How to Protect the Gate in High-Input Voltage Condition

In Figure 1, the maximum gate to source voltage for  $Q_2$  is about 20 V. So this circuit can only support the limited input voltage. When the input voltage becomes higher, the gate driving voltage of  $Q_2$  becomes higher, which can damage the switch.

Figure 5 shows an efficient circuit which can protect the gate in high-input voltage condition. Zener diode D3 can limit the gate driving voltage of  $Q_2$ .



Copyright © 2017, Texas Instruments Incorporated

Figure 5. The Protection Circuit

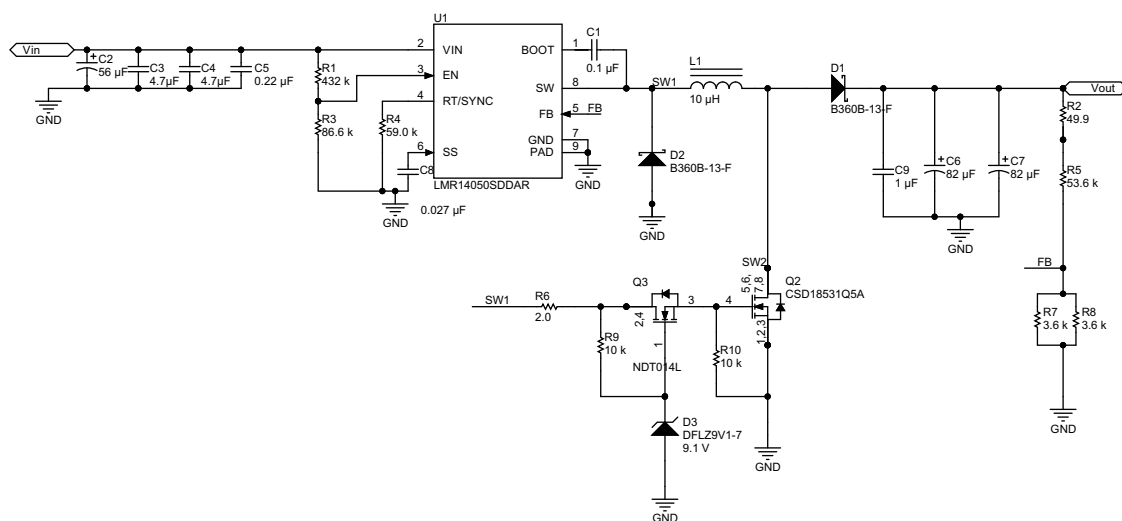
#### 4 Bench Verification

This section introduces a real case about how to realize a positive buck-boost converter using a regulator. LMR14050 is used as an example. Table 1 lists the input and output parameters.

Table 1. Specifications

$V_{in\_Min}$	9 V DC
$V_{in\_Max}$	36 V DC
$V_{out}$	12 V DC
$P_{out}$	30 W Max
Target switching frequency	400 kHz

Figure 6 shows the overall schematic of using LMR14050 to configure the positive buck-boost solution.



Copyright © 2017, Texas Instruments Incorporated

Figure 6. LMR14050 Buck-boost Schematic

Figure 7, Figure 8, Figure 9, and Figure 10 are waveforms that show the two switching node waveforms in different input voltage and in different load condition. It is shown that this configuration can work formally and realize buck-boost in CCM and DCM mode.

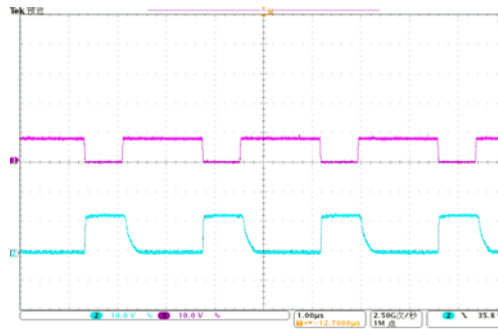


Figure 7. Waveforms for  $V_{in} = 9\text{ V}$ ,  $V_{out} = 12\text{ V} / 2\text{ A}$

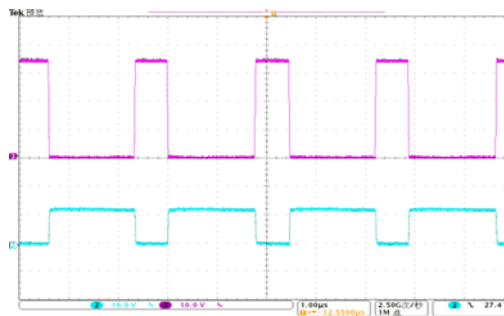


Figure 8. Waveforms for  $V_{in} = 36\text{ V}$ ,  $V_{out} = 12\text{ V} / 2.5\text{ A}$

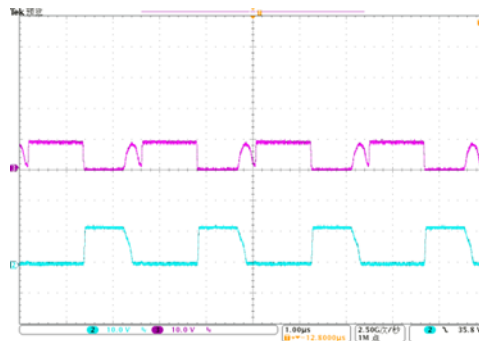


Figure 9. Waveforms for  $V_{in} = 9\text{ V}$ ,  $V_{out} = 12\text{ V} / 0.2\text{ A}$

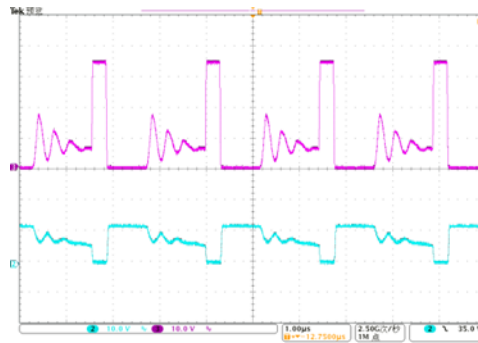


Figure 10. Waveforms for  $V_{in} = 36\text{ V}$ ,  $V_{out} = 12\text{ V} / 0.2\text{ A}$

Figure 11 shows the output current in full load for LMR14050-buck-boost, which is verified with the previous theory analysis.

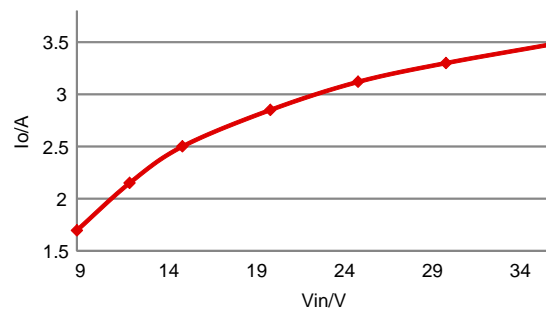


Figure 11. The Output Current in Full Load

Figure 12 shows the loop-response characteristics. Gain and phase plots are shown for  $V_{in}$  voltage of 12 V with load current of 2.5 A. Figure 13 shows the load transients performance. The current step is from 0 to 2.5 A at  $V_{in} = 12\text{ V}$  with 100 mA/ $\mu\text{s}$  slew rate.

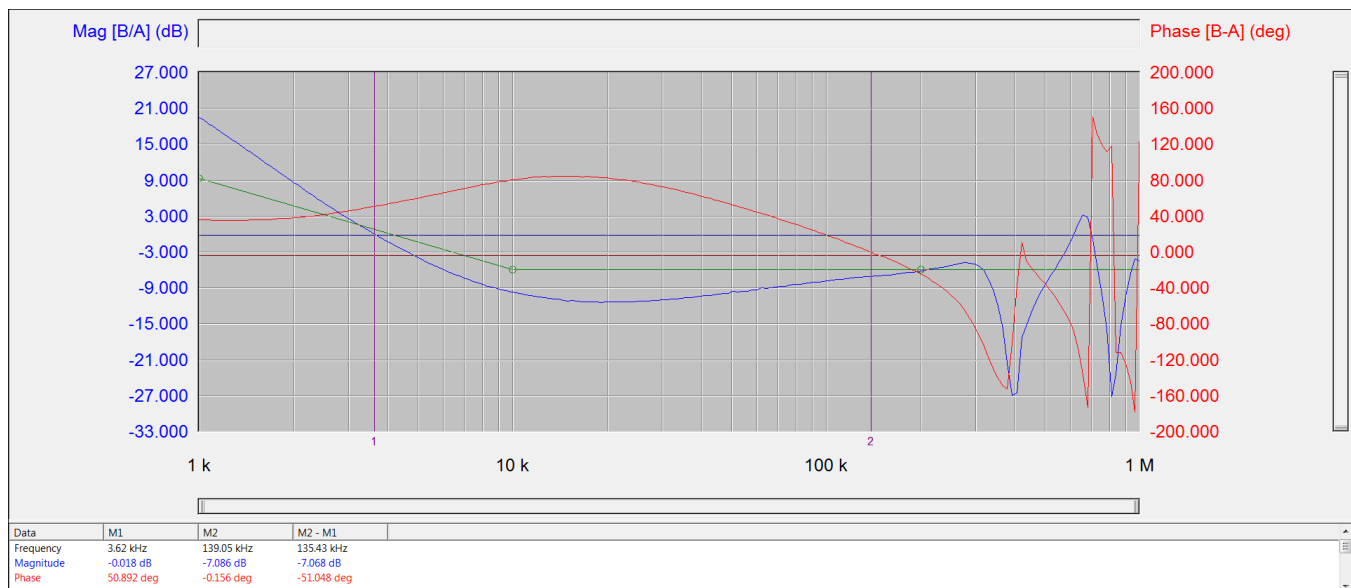


Figure 12. Loop Measurement Result

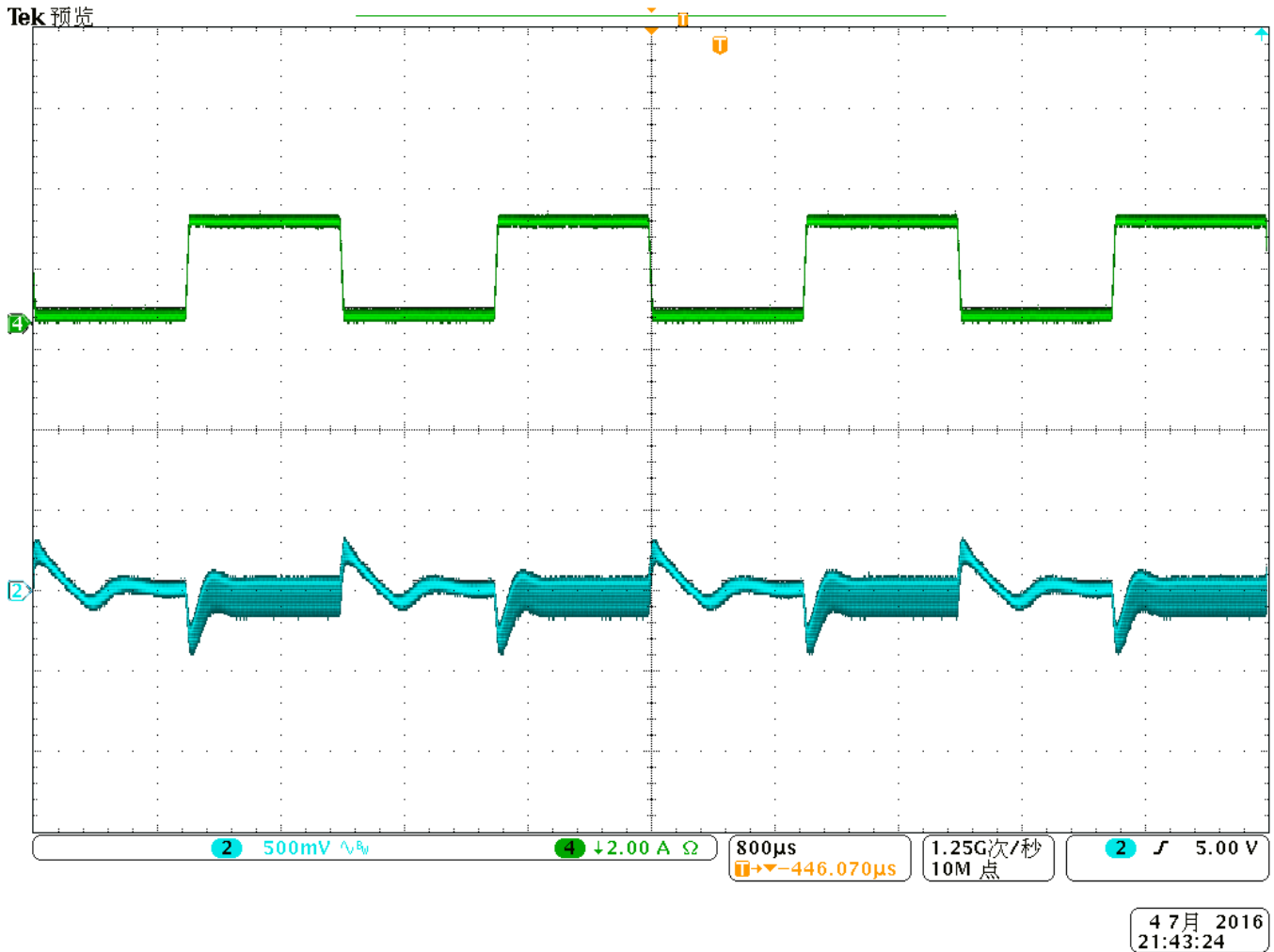


Figure 13. Load Transient Response

## 5 Conclusion

This application note introduces how positive buck-boost function can be realized by using a buck regulator to meet the customer application demands. Also, the problem of the gate protection can be solved, and the output current in full load of this configuration should be recalculated. Finally, using LMR14050 as an example, test results are used to demonstrate this solution.

## 6 References

- Texas Instruments, [LMR14050 data sheet](#)
- Texas Instruments, [LMR14050SEVM User's Guide](#)

## IMPORTANT NOTICE FOR TI DESIGN INFORMATION AND RESOURCES

Texas Instruments Incorporated ("TI") technical, application or other design advice, services or information, including, but not limited to, reference designs and materials relating to evaluation modules, (collectively, "TI Resources") are intended to assist designers who are developing applications that incorporate TI products; by downloading, accessing or using any particular TI Resource in any way, you (individually or, if you are acting on behalf of a company, your company) agree to use it solely for this purpose and subject to the terms of this Notice.

TI's provision of TI Resources does not expand or otherwise alter TI's applicable published warranties or warranty disclaimers for TI products, and no additional obligations or liabilities arise from TI providing such TI Resources. TI reserves the right to make corrections, enhancements, improvements and other changes to its TI Resources.

You understand and agree that you remain responsible for using your independent analysis, evaluation and judgment in designing your applications and that you have full and exclusive responsibility to assure the safety of your applications and compliance of your applications (and of all TI products used in or for your applications) with all applicable regulations, laws and other applicable requirements. You represent that, with respect to your applications, you have all the necessary expertise to create and implement safeguards that (1) anticipate dangerous consequences of failures, (2) monitor failures and their consequences, and (3) lessen the likelihood of failures that might cause harm and take appropriate actions. You agree that prior to using or distributing any applications that include TI products, you will thoroughly test such applications and the functionality of such TI products as used in such applications. TI has not conducted any testing other than that specifically described in the published documentation for a particular TI Resource.

You are authorized to use, copy and modify any individual TI Resource only in connection with the development of applications that include the TI product(s) identified in such TI Resource. NO OTHER LICENSE, EXPRESS OR IMPLIED, BY ESTOPPEL OR OTHERWISE TO ANY OTHER TI INTELLECTUAL PROPERTY RIGHT, AND NO LICENSE TO ANY TECHNOLOGY OR INTELLECTUAL PROPERTY RIGHT OF TI OR ANY THIRD PARTY IS GRANTED HEREIN, including but not limited to any patent right, copyright, mask work right, or other intellectual property right relating to any combination, machine, or process in which TI products or services are used. Information regarding or referencing third-party products or services does not constitute a license to use such products or services, or a warranty or endorsement thereof. Use of TI Resources may require a license from a third party under the patents or other intellectual property of the third party, or a license from TI under the patents or other intellectual property of TI.

TI RESOURCES ARE PROVIDED "AS IS" AND WITH ALL FAULTS. TI DISCLAIMS ALL OTHER WARRANTIES OR REPRESENTATIONS, EXPRESS OR IMPLIED, REGARDING TI RESOURCES OR USE THEREOF, INCLUDING BUT NOT LIMITED TO ACCURACY OR COMPLETENESS, TITLE, ANY EPIDEMIC FAILURE WARRANTY AND ANY IMPLIED WARRANTIES OF MERCHANTABILITY, FITNESS FOR A PARTICULAR PURPOSE, AND NON-INFRINGEMENT OF ANY THIRD PARTY INTELLECTUAL PROPERTY RIGHTS.

TI SHALL NOT BE LIABLE FOR AND SHALL NOT DEFEND OR INDEMNIFY YOU AGAINST ANY CLAIM, INCLUDING BUT NOT LIMITED TO ANY INFRINGEMENT CLAIM THAT RELATES TO OR IS BASED ON ANY COMBINATION OF PRODUCTS EVEN IF DESCRIBED IN TI RESOURCES OR OTHERWISE. IN NO EVENT SHALL TI BE LIABLE FOR ANY ACTUAL, DIRECT, SPECIAL, COLLATERAL, INDIRECT, PUNITIVE, INCIDENTAL, CONSEQUENTIAL OR EXEMPLARY DAMAGES IN CONNECTION WITH OR ARISING OUT OF TI RESOURCES OR USE THEREOF, AND REGARDLESS OF WHETHER TI HAS BEEN ADVISED OF THE POSSIBILITY OF SUCH DAMAGES.

You agree to fully indemnify TI and its representatives against any damages, costs, losses, and/or liabilities arising out of your non-compliance with the terms and provisions of this Notice.

This Notice applies to TI Resources. Additional terms apply to the use and purchase of certain types of materials, TI products and services. These include; without limitation, TI's standard terms for semiconductor products (<http://www.ti.com/sc/docs/stdterms.htm>), [evaluation modules](#), and [samples](http://www.ti.com/sc/docs/sampterm.htm) (<http://www.ti.com/sc/docs/sampterm.htm>).

Mailing Address: Texas Instruments, Post Office Box 655303, Dallas, Texas 75265  
Copyright © 2017, Texas Instruments Incorporated