

# Comparing the merits of integrated power modules versus discrete regulators



**Rich Rosen**  
*Field Applications Engineer*  
*Texas Instruments*

# Modern integration technologies have brought about improvements to the modular “DC/DC power module” voltage regulator.

Time to market, cost, size constraints, reliability, and design capabilities are among the motivating factors in choosing modular power versus a traditional controller plus external components design. Each approach has its advantages and disadvantages. And often times, it is not possible to predict which choice will better satisfy the list of design criteria until the design process has been completed for each approach.

## What is a modular voltage regulator?

The basic building blocks of a simple, non-isolated DC-DC switching voltage regulator can be seen in the schematics shown in **Figure 1**. PWM control, current switching, inductance, and capacitance for storing energy are all required. The power module integrates the current switches and inductor while these are separate entities in a discrete design. Since the values of the energy-storing capacitors tend to be well over 1  $\mu\text{f}$ , they are integrated less often into a monolithic package.

## How to choose between discrete and modular power

Typically, the tradeoff is between cost of ownership, design effort, and performance.

The cost of ownership is the bill of materials (BOM) cost in addition to power designer labor fees plus test, potential redesign labor fees, and finally

manufacturing/assembly costs. Other potential costs can include those associated with quality issues with an improperly designed supply.

Clearly, the design effort behind using a fully integrated power module is less than that of a discrete supply. But within the discrete regulator designs available, there exists a range of integration. For example, some regulators have built-in FET switches that remove the task of choosing the FETs and gate drive considerations. Controller ICs are the most flexible of choices but require a more expert level of design capability. Should one decide to tackle a non-modular approach, they should further investigate how “discretely” they wish to dive into the design. Fortunately, there are excellent tools available such as TI’s WEBENCH® online design tool, that allow novice power supply designers to easily assemble discrete supply designs.

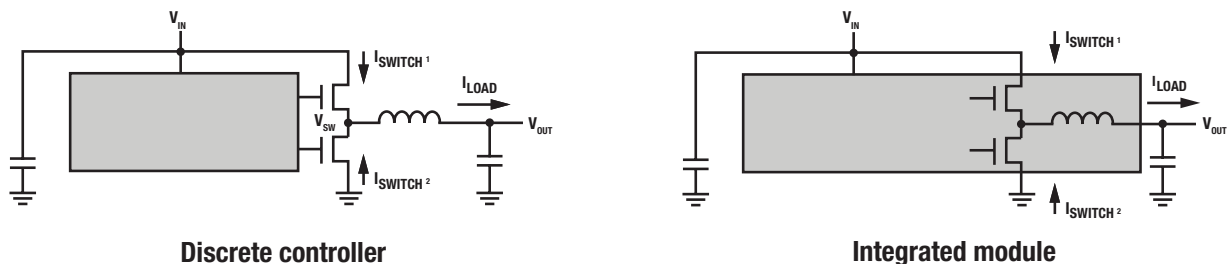


Figure 1. DC-DC buck regulator integration levels.

Integrated modules streamline design and layout challenges but do not completely eliminate the process. At a minimum, the designer must evaluate the power specification of the design; this includes assessing requirements of input and output voltage, current, allowed temperature rise, noise issues, safety and emissions, and possibly other considerations. Even the simplest modular solution is not exempt from careful planning.

Circuit performance is multifaceted and application dependent. Where output noise might be most critical in an RF circuit supply, temperature rise and size of the circuit can be the driving specifications in a hearing aid.

### Design example

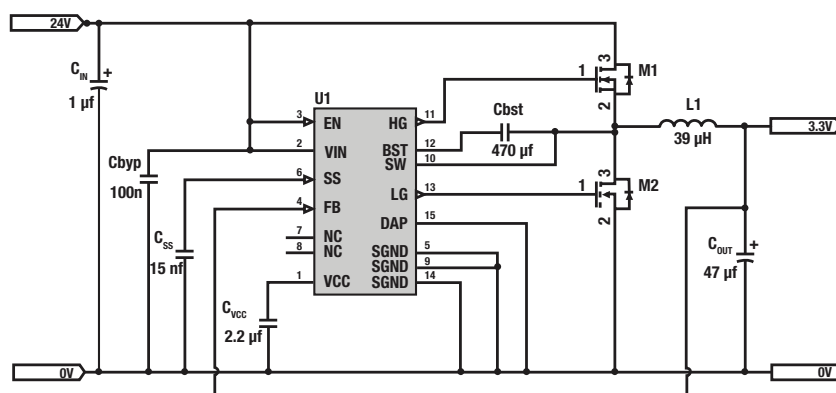
It would be impossible to examine the pros and cons of each approach with all possible values of voltage and current, but the following design analysis will expose the benefits and drawbacks of a modular design versus a design with a discrete controller IC for a common set of parameters. The design specifications will be the same between the two approaches:

- $V_{IN} = 24\text{ V}$
- $V_{OUT} = 3.3\text{ V}$
- Output current = 3.0 A maximum
- Ambient temperature = 55°C

To demonstrate the relative ease of design between the two approaches, TI's WEBENCH design tool will be used to design circuits around the LM3152 3.3V SIMPLE SWITCHER® controller and LMZ14203 SIMPLE SWITCHER power module. The easy-to-use WEBENCH tool offers too large a complement of design tools to highlight at this time, but it can be thoroughly examined online at [Ti.com/webench](http://Ti.com/webench). The desired output will focus on the schematic, BOM costs, component land area of the PCB, output noise analysis, efficiencies, and thermal simulation.

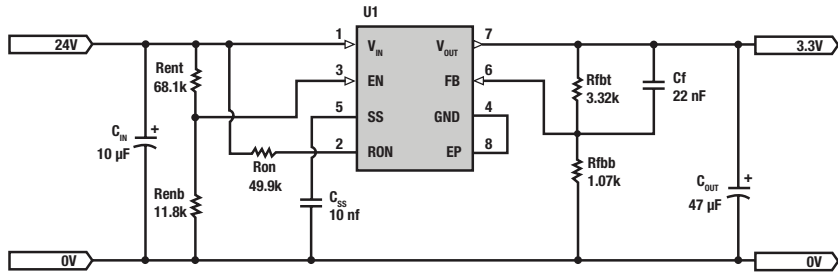
### Schematics and bill of materials

Figure 2 shows the discrete design using the LM3152 3.3 V controller. This design was accomplished using the WEBENCH tool and took about 30 minutes, including a few part changes to optimize for cost savings and some design simulation to verify proper operation. Design without the aid of a CAD program might take anywhere from a couple of hours to an entire day for circuit calculations and component searches.



Part	Attribute	Price
<b>Cbst</b>	470 nF/16 V	\$ 0.02
<b>Cbyp</b>	100 nF/50 V	\$ 0.01
<b>C<sub>IN</sub></b>	1 µF/50 V	\$ 0.05
<b>C<sub>OUT</sub></b>	47 µF/16 V	\$ 0.41
<b>C<sub>SS</sub></b>	15 nF/50 V	\$ 0.01
<b>C<sub>VCC</sub></b>	2.2 µF/10 V	\$ 0.02
<b>L1</b>	10 µH/4 A	\$ 0.54
<b>M1</b>	80 V/30 mΩ	\$ 0.39
<b>M2</b>	80 V/30 mΩ	\$ 0.39
<b>U1</b>	LM3152MH-3.3	\$ 2.30
<b>Total BOM</b>		<b>\$ 4.14</b>

Figure 2. Discrete design—LM3152 3.3V controller and bill of materials.



Part	Attribute	Price
Cf	22 nF/50 V	\$ 0.01
C <sub>IN</sub>	10 µF/50 V	\$ 0.43
C <sub>OUT</sub>	47 µF/6.3 V	\$ 0.18
C <sub>SS</sub>	10 nF/50 V	\$ 0.02
Renb	11.8 KΩ	\$ 0.01
Rent	68.1 KΩ	\$ 0.01
Rfbb	1.07 KΩ	\$ 0.01
Rfbb	3.32 KΩ	\$ 0.01
Ron	49.9 KΩ	\$ 0.01
U1	LMZ14203	\$ 9.50
Total BOM		\$ 10.19

Figure 3. Modular design—LMZ14203 integrated power module and bill of materials.

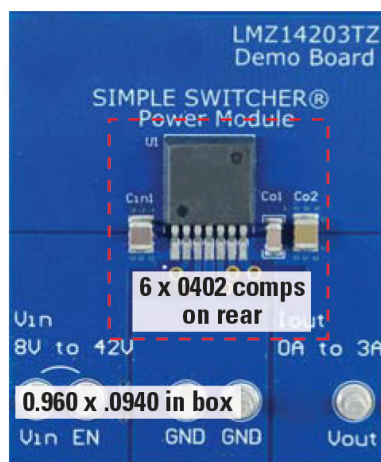
Figure 3 shows the schematic of the modular design using the LMZ14203 integrated power module. With fewer design choices to make, and limited opportunities for error, the design process is almost instantaneous with the WEBENCH design tool. The data sheet provides instruction on choosing the capacitors and resistors. The task of searching through catalogs for the FETs and the inductor is eliminated.

Comparing the BOM cost between the two designs, there is clearly a cost benefit to the discrete design. Note that the power module price is based on a 500-piece list price, whereas the controller price is based on a 1000-quantity list price. All costs shown are generated by the WEBENCH tool and are

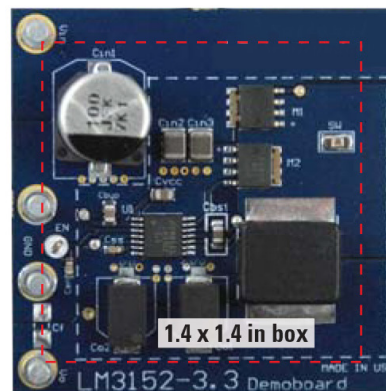
published catalog prices, typically at 1000-unit or cut-tape quantities.

### Simplicity of PCB layout

Figure 4 shows evaluation boards that represent the current design examples. The “art” of laying out a switching regulator lies in reducing the length and size of the high-current, high-frequency nodes, as well as properly managing the paths of the return currents. Any PCB CAD operator can put together a “working” supply. Ensuring the supply is robust and operating with minimal noise emissions requires careful planning and knowledge of the circuit operation. It should be intuitively obvious that the modular design is far less prone to layout mistakes.



Integrated power module



Discrete controller

Figure 4. Evaluation boards for modular and discrete solutions.

Design type	WEBENCH® footprint (single-side layout)	50% packing factor	Eval board comparison (single-side layout)
Discrete	526 mm <sup>2</sup> / 0.815 in <sup>2</sup>	1.22 in <sup>2</sup>	1.4 in <sup>2</sup>
Modular	374 mm <sup>2</sup> / 0.58 in <sup>2</sup>	0.87 in <sup>2</sup>	0.902 in <sup>2</sup>

Figure 5. Component land area comparison table.

Another advantage of the PCB layout for some modular designs is the ability to route an unbroken top copper plane underneath the die. Maximum heat conduction between the die and the top copper plane is always an important goal to keep the junction temperatures as cool as possible. In the case of TI's LMZ family of power modules, a large-geometry exposed pad of ground potential is spatially separated from the other signal pins. The LMZ14203 evaluation board in Figure 4 illustrates the ease of providing unbroken top copper to the exposed pad underneath the module.

## Component land area

Component PCB “footprint” is given in units of mm<sup>2</sup> by the WEBENCH tool. It includes a 1 mm per-side margin to allow for clearance. The table in Figure 5 summarizes the total component footprint and adds an additional 50% packing factor to include traces and open spaces. All dimensions are for single-side layout.

## Efficiency and thermal simulation

The WEBENCH thermal simulator outputs represent operating conditions of 24 V<sub>IN</sub>, 3.3 V<sub>OUT</sub>, 3 A output current, 55°C ambient temperature, no fan, and 1.5 oz copper on both sides. Thermal graphs show a generic layout and do not represent the maximum packing density possible.

It is clear from the efficiency plots and the thermal images in Figures 6 and 7 that the discrete design is more efficient and will operate with less heat dissipation compared to the modular design. Of course, this is just one operating point.

An advantage of the discrete design is the ability to optimize the FET selection for the specified operating voltage and output current. Also, it is important to remember that these temperatures are at 55°C raised ambient. With a maximum T<sub>J</sub> of 125°C, there remains an additional 38°C of safety buffer for the modular design.

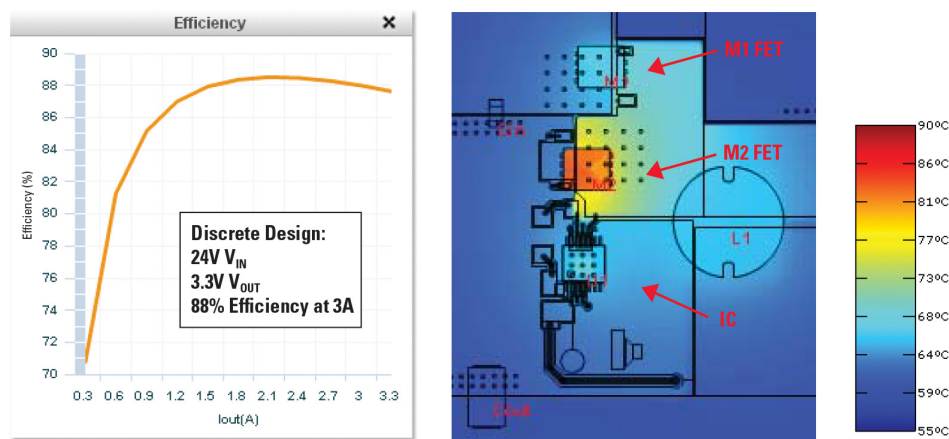


Figure 6. WEBENCH simulation output for a discrete design.

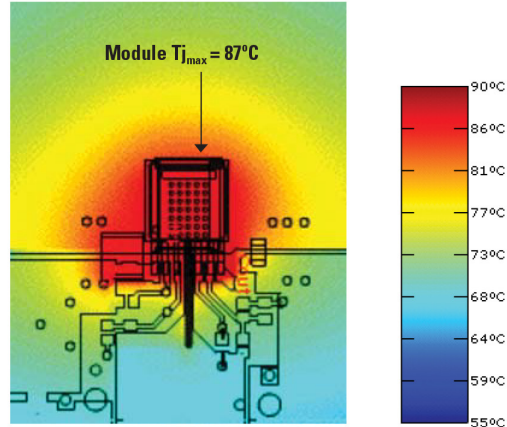
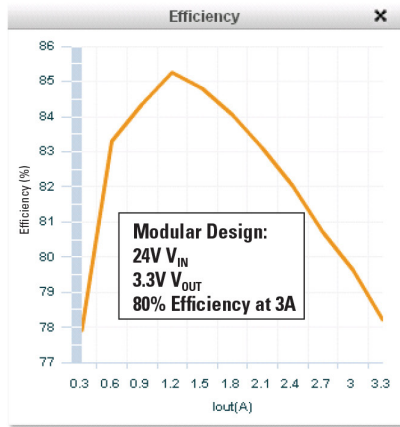


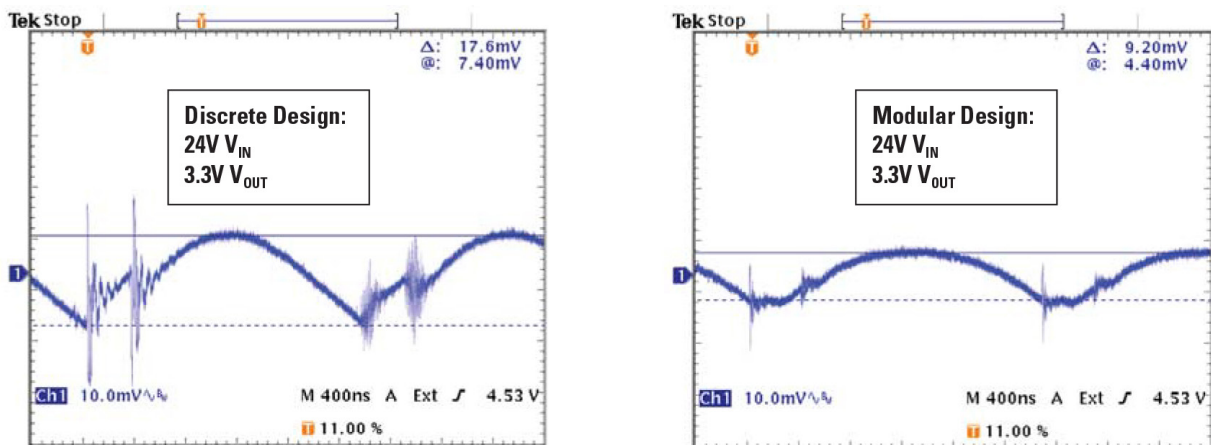
Figure 7. WEBENCH simulation output for a modular design.

### Output noise and emissions

Since there are many ways to quantify noise generated from switching supplies, this discussion will be limited to comparing the output voltage noise between the two designs. In addition, it would be an erroneous assumption to say that one approach is always noisier than the other. Factors such as inductor size, input voltage, switching frequency, and capacitor Equivalent Series Resistance (ESR) play dominant roles in the resultant output voltage ripple.

There is, however, a distinct advantage in modular designs since the circuit traces connecting the regulator components are minimized far more than is possible in a discrete design.

The LMZ family of integrated modules utilizes a threedimensional stack of silicon and shielded inductor to minimize trace length and inductance. Scope plots of the output voltages are shown in Figure 8.



Note: AC-coupled output noise. BW = 150 MHz. Very low inductance probe across output capacitors.

Figure 8. Output ripple noise measurement taken from evaluation boards.

For both of these outputs, it is possible to realize even lower voltage ripple by lowering the total capacitor ESR. This can be achieved by obtaining a more expensive capacitor or adding more capacitance in parallel. The difference to notice is the amount of very-high-frequency noise “spikes” that appear in the discrete design. All of the additional parasitic inductance and capacitance of the trace elements create high-frequency spikes that occur in the output and also as conducted and radiated noise that can fail noise emissions tests.

### **Reliability considerations**

Circuit failures of a working power supply design can be grouped into three categories—initial assembly errors, lack of protection against misuse (overloaded outputs, excessive input voltages, etc.), and shortened lifetime component failures. Both discrete and modular designs are subject to all three categories, but it is often the case where the modular design incorporates a more extensively thought-out set of protection mechanisms since the entire circuit is “planned” by a designer and the module manufacturer will subject the circuit to a much more rigorous set of testing than the typical end user will expose to their supply.

Modular designs have a significant advantage when it comes to comparing the likelihood of assembly errors such as incorrect components, unstuffed components, and bad solder joints. The modules are always tested before they are sold for assembly into a printed circuit board.

### **Summary**

The pros and cons of discrete versus modular voltage regulator design for the previous design example are summarized in the following table. This “scorecard” will generally hold true for many DC-DC regulator applications. Exceptions to this example will occur often, especially since design specifications often deviate from common voltage and current ranges.

	Consideration	Modular approach	Discrete approach	Comments
Costs	Cost of design		x	Initial cost much less for discrete design Time to market might offset differences significantly
	Reliability of design	x		Assembly errors greatly reduced in modular design Modular design subject to higher levels of testing
	Cost of ownership	Depends upon factors such as quantities, quality of assembly line, and purchasing consistency		
Ease of design	Design simplicity	x		Always easier, especially if CAD tool unavailable
	Simplicity of PCB layout	x		Always easier, difficult to make mistakes
	Design effort	Schematic, parts sourcing, and PCB layout are all easier		
Performance	Design size	x		Usually smaller with modular design
	Thermal advantages		x	Ability to optimize components allows flexibility in design
	Output noise, ripple	x	x	For this design, modular was quieter, but there is control over ripple noise with choice of component value
	Output voltage, RF	x		Modular designs are inherently quieter due to small node length/size
	RF emissions / compliance	x		As above, TI's SIMPLE SWITCHER power modules are pre-designed to pass EN55022 and equivalent compliance testing
	Circuit performance	More performance metrics available, but not listed above; extremely application dependent		

**Important Notice:** The products and services of Texas Instruments Incorporated and its subsidiaries described herein are sold subject to TI's standard terms and conditions of sale. Customers are advised to obtain the most current and complete information about TI products and services before placing orders. TI assumes no liability for applications assistance, customer's applications or product designs, software performance, or infringement of patents. The publication of information regarding any other company's products or services does not constitute TI's approval, warranty or endorsement thereof.

The platform bar is a trademark of Texas Instruments. All other trademarks are the property of their respective owners.



## IMPORTANT NOTICE

Texas Instruments Incorporated and its subsidiaries (TI) reserve the right to make corrections, enhancements, improvements and other changes to its semiconductor products and services per JESD46, latest issue, and to discontinue any product or service per JESD48, latest issue. Buyers should obtain the latest relevant information before placing orders and should verify that such information is current and complete. All semiconductor products (also referred to herein as "components") are sold subject to TI's terms and conditions of sale supplied at the time of order acknowledgment.

TI warrants performance of its components to the specifications applicable at the time of sale, in accordance with the warranty in TI's terms and conditions of sale of semiconductor products. Testing and other quality control techniques are used to the extent TI deems necessary to support this warranty. Except where mandated by applicable law, testing of all parameters of each component is not necessarily performed.

TI assumes no liability for applications assistance or the design of Buyers' products. Buyers are responsible for their products and applications using TI components. To minimize the risks associated with Buyers' products and applications, Buyers should provide adequate design and operating safeguards.

TI does not warrant or represent that any license, either express or implied, is granted under any patent right, copyright, mask work right, or other intellectual property right relating to any combination, machine, or process in which TI components or services are used. Information published by TI regarding third-party products or services does not constitute a license to use such products or services or a warranty or endorsement thereof. Use of such information may require a license from a third party under the patents or other intellectual property of the third party, or a license from TI under the patents or other intellectual property of TI.

Reproduction of significant portions of TI information in TI data books or data sheets is permissible only if reproduction is without alteration and is accompanied by all associated warranties, conditions, limitations, and notices. TI is not responsible or liable for such altered documentation. Information of third parties may be subject to additional restrictions.

Resale of TI components or services with statements different from or beyond the parameters stated by TI for that component or service voids all express and any implied warranties for the associated TI component or service and is an unfair and deceptive business practice. TI is not responsible or liable for any such statements.

Buyer acknowledges and agrees that it is solely responsible for compliance with all legal, regulatory and safety-related requirements concerning its products, and any use of TI components in its applications, notwithstanding any applications-related information or support that may be provided by TI. Buyer represents and agrees that it has all the necessary expertise to create and implement safeguards which anticipate dangerous consequences of failures, monitor failures and their consequences, lessen the likelihood of failures that might cause harm and take appropriate remedial actions. Buyer will fully indemnify TI and its representatives against any damages arising out of the use of any TI components in safety-critical applications.

In some cases, TI components may be promoted specifically to facilitate safety-related applications. With such components, TI's goal is to help enable customers to design and create their own end-product solutions that meet applicable functional safety standards and requirements. Nonetheless, such components are subject to these terms.

No TI components are authorized for use in FDA Class III (or similar life-critical medical equipment) unless authorized officers of the parties have executed a special agreement specifically governing such use.

Only those TI components which TI has specifically designated as military grade or "enhanced plastic" are designed and intended for use in military/aerospace applications or environments. Buyer acknowledges and agrees that any military or aerospace use of TI components which have **not** been so designated is solely at the Buyer's risk, and that Buyer is solely responsible for compliance with all legal and regulatory requirements in connection with such use.

TI has specifically designated certain components as meeting ISO/TS16949 requirements, mainly for automotive use. In any case of use of non-designated products, TI will not be responsible for any failure to meet ISO/TS16949.

### Products

Audio	<a href="http://www.ti.com/audio">www.ti.com/audio</a>
Amplifiers	<a href="http://amplifier.ti.com">amplifier.ti.com</a>
Data Converters	<a href="http://dataconverter.ti.com">dataconverter.ti.com</a>
DLP® Products	<a href="http://www.dlp.com">www.dlp.com</a>
DSP	<a href="http://dsp.ti.com">dsp.ti.com</a>
Clocks and Timers	<a href="http://www.ti.com/clocks">www.ti.com/clocks</a>
Interface	<a href="http://interface.ti.com">interface.ti.com</a>
Logic	<a href="http://logic.ti.com">logic.ti.com</a>
Power Mgmt	<a href="http://power.ti.com">power.ti.com</a>
Microcontrollers	<a href="http://microcontroller.ti.com">microcontroller.ti.com</a>
RFID	<a href="http://www.ti-rfid.com">www.ti-rfid.com</a>
OMAP Applications Processors	<a href="http://www.ti.com/omap">www.ti.com/omap</a>
Wireless Connectivity	<a href="http://www.ti.com/wirelessconnectivity">www.ti.com/wirelessconnectivity</a>

### Applications

Automotive and Transportation	<a href="http://www.ti.com/automotive">www.ti.com/automotive</a>
Communications and Telecom	<a href="http://www.ti.com/communications">www.ti.com/communications</a>
Computers and Peripherals	<a href="http://www.ti.com/computers">www.ti.com/computers</a>
Consumer Electronics	<a href="http://www.ti.com/consumer-apps">www.ti.com/consumer-apps</a>
Energy and Lighting	<a href="http://www.ti.com/energy">www.ti.com/energy</a>
Industrial	<a href="http://www.ti.com/industrial">www.ti.com/industrial</a>
Medical	<a href="http://www.ti.com/medical">www.ti.com/medical</a>
Security	<a href="http://www.ti.com/security">www.ti.com/security</a>
Space, Avionics and Defense	<a href="http://www.ti.com/space-avionics-defense">www.ti.com/space-avionics-defense</a>
Video and Imaging	<a href="http://www.ti.com/video">www.ti.com/video</a>

### TI E2E Community

[e2e.ti.com](http://e2e.ti.com)