

**ABSTRACT**

The LP87745-Q1 device is designed to meet the power management requirements of the AWR and IWR MMICs in various automotive and industrial radar applications. The device has three step-down DC/DC converters, a 5 V boost converter and a 1.8 V/3.3 V LDO. The LDO is powered from the boost and intended for xWR and peripheral devices IO supply. The device is controlled by an SPI serial interface and by enable signal. The step-down DC/DC converters support programmable switching frequency of 17.6 MHz, 8.8 MHz or 4.4 MHz and have low noise across wide frequency range which enables LDO-free power solution with minimal or no additional passive filtering. LP87745-Q1 device offers flexible external component selection to optimize the solution in terms of performance or cost. The features of the device target safety-relevant applications with system-safety requirements up to ASIL-C level.

This user's guide provides instructions to power up and evaluate LP87745-Q1 device using the LP877451Q1EVM evaluation module (EVM) and software user interface (LP87745-Q1 GUI). By default LP877451Q1EVM has LP877451A1RXVRQ1 device OTP version (17.6 MHz, Low noise use case BOM), but this EVM can also be used to evaluate another OTP device from LP8774x-Q1 product family.

**CAUTION**

Hot surface.
Contact may cause burns.
Do not touch!

Table of Contents

1 Top View with Basic External Connections	2
2 Input, Output Voltages, and Load Current Requirements	3
3 Jumpers and connectors	4
3.1 Test Points.....	6
4 Getting Started	7
4.1 GUI.....	7
4.2 GUI Installation and working with GUI.....	7
5 Watchdog	10
6 Schematics, Layout and BOM	11
6.1 Schematic Diagram.....	11
6.2 PCB Layer Diagram.....	14
6.3 Part List.....	15

List of Figures

Figure 1-1. EVM Top-View Diagram With Basic Connections and Default Jumpers.....	2
Figure 4-1. GUI Front Page.....	8
Figure 4-2. GUI Configuration Page.....	8
Figure 4-3. GUI Register Map Page.....	9
Figure 5-1. Watchdog Sequence in Q&A Mode.....	10
Figure 6-1. PMIC Schematic.....	11
Figure 6-2. Preregulator Schematic.....	12
Figure 6-3. MCU Schematic.....	13
Figure 6-4. Layout of Top Layer, Layer 1.....	14
Figure 6-5. Layout of Ground layer 1, Layer 2.....	14
Figure 6-6. Layout of Signal Layer 1, Layer 3.....	14

Figure 6-7. Layout of Signal Layer 2, Layer 4..... 14
 Figure 6-8. Layout of Ground Layer 2, Layer 5..... 14
 Figure 6-9. Layout of Bottom Layer, Layer 6..... 14

List of Tables

Table 2-1. Input and Output Voltages, and Load Current Requirements..... 3
 Table 3-1. Terminal Blocks..... 4
 Table 3-2. Configuration Jumpers..... 4
 Table 3-3. Test Points on the EVM..... 6
 Table 4-1. Jumper Connections for Powering the EVM..... 7
 Table 6-1. Parts List..... 15

Trademarks

All trademarks are the property of their respective owners.

1 Top View with Basic External Connections

Figure 1-1 shows the top-view diagram of the EVM along with basic connections. By default, EVM is configured to power up through VBAT supply through onboard 12 V VIN to 3.3 V VOUT pre-regulator. EVM can also be powered through external 3.3 V supply or through USB port. Please refer to Table 3-2 for the right jumper configuration for each power-supply input.

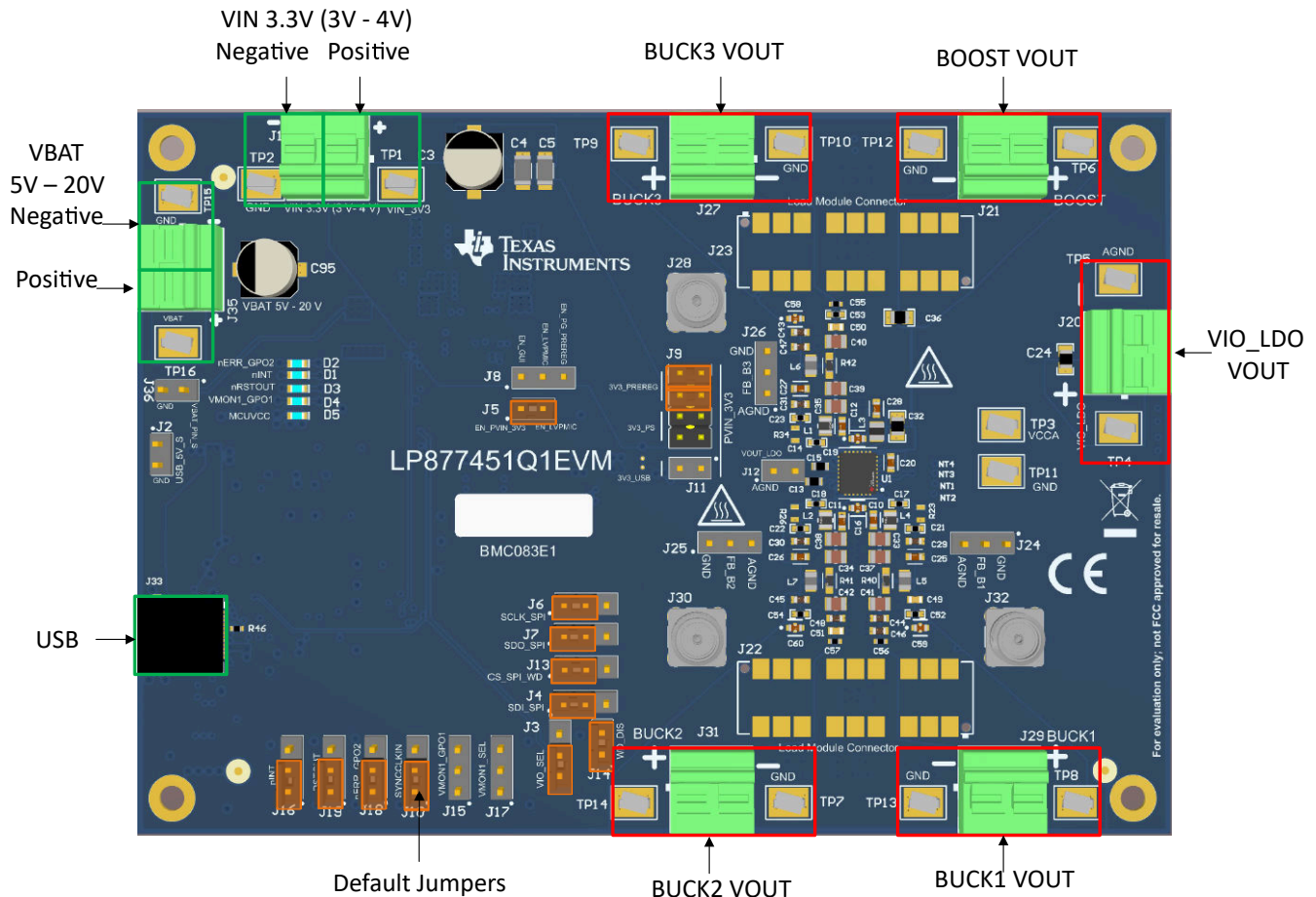


Figure 1-1. EVM Top-View Diagram With Basic Connections and Default Jumpers

2 Input, Output Voltages, and Load Current Requirements

LP87745-Q1 device works with 3.3 V input supply and supply is internally monitored for undervoltage (UV) and overvoltage (OV) conditions and hence keep the input supply voltage within 3.3 V +/- 6 % to avoid input supply UV/OV detection.

- If the VBAT/pre-regulator path is used (default configuration), input supply to the device is already regulated to 3.3 V.
- If external 3.3 V supply is used, ensure that input supply voltage is always within the recommended voltage range and drop across supply path must be considered.
- If EVM is configured to work with USB supply, regulators should not be loaded.

[Table 2-1](#) lists the input and output voltage for each regulator and their maximum load-current requirements. Refer LP87745-Q1 device data sheet for more information about device electrical characteristics and its features.

Table 2-1. Input and Output Voltages, and Load Current Requirements

Regulator Name	Input Supply Voltage at PMIC Supply Pin	Output Voltage	Maximum Load Current
BUCK1	3.1 V - 3.5 V	1.8 V	3 A
BUCK2	3.1 V - 3.5 V	1.0 V	3 A
BUCK3	3.1 V - 3.5 V	1.2 V	3 A
BOOST	3.1 V - 3.5 V	5 V	0.3 A
VIO_LDO	5 V (Generated from BOOST)	3.3 V	0.150 A

If all the regulators are loaded with maximum load current simultaneously, PMIC and PCB can become hot. Make sure that PMIC junction temperature does not exceed 150 °C.

3 Jumpers and connectors

The LP877451Q1EVM has many terminal blocks, jumpers and test points to offer certain flexibility to help users to verify the EVM according to their application conditions. However, EVM is pre-configured with default jumper settings and users can power up the regulators without the need of jumper modifications. Setting these jumpers correctly for the correct function of the EVM is important. [Table 3-1](#) lists all the terminal blocks on the EVM and [Table 3-2](#) lists the jumpers and their functionality. All the terminal blocks are marked with polarity and Pin 1 of test points / jumpers are marked with white dot for identification purpose. To understand more about the jumper functionality, see the schematic diagrams in [Section 6.1](#).

Table 3-1. Terminal Blocks

Terminal Block Number	Terminal Block Name	Description
J1	VIN 3.3V	3.3 V External Input Voltage
J20	VIO_LDO	Terminal block for VIO_LDO Output
J21	BOOST	Terminal block for BOOST Output
J27	BUCK3	Terminal block for BUCK3 Output
J29	BUCK1	Terminal block for BUCK1 Output
J31	BUCK2	Terminal block for BUCK2 Output
J33	J33	USB Connector
J35	VBAT	5 V - 20 V Input

Table 3-2. Configuration Jumpers

Jumper/Connector Number	Jumper/Connector Name	Configuration	Description
J3	VIO_SEL	Pins 1 and 2	3.3 V supply generated from USB supply
		Pins 2 and 3 (Default)	3.3 V VIO supply generated from PMIC VIO_LDO
J4	SDI_SPI	Pins 1 and 2 (Default)	Connects PMIC SDI_SPI signal to MCU SDO_SPI port directly
		Pins 2 and 3	Connects PMIC SDI_SPI signal to MCU SDO_SPI port through a level shifter (series resistors need to be mounted if this option is used)
J5	EN_PVIN_3V3	Closed (Default)	Connects PMIC ENABLE pin to PVIN_Bx pins (PVIN_3V3) through a pull up resistor and device gets enabled as soon as 3.3 V is generated/applied
		Open	If PMIC needs to be enabled through USB/GUI or through pre-regulator PGOOD signal, then this jumper must be kept open
J6	SCLK_SPI	Pins 1 and 2 (Default)	Connects PMIC SCLK_SPI signal to MCU SCLK_SPI port directly
		Pins 2 and 3	Connects PMIC SCLK_SPI signal to MCU SCLK_SPI port through a level shifter (series resistors need to be mounted if this option is used)
J7	SDO_SPI	Pins 1 and 2 (Default)	Connects PMIC SDO_SPI signal to MCU SDI_SPI port directly
		Pins 2 and 3	Connects PMIC SDO_SPI signal to MCU SDI_SPI port through a level shifter (series resistors need to be mounted if this option is used)

Table 3-2. Configuration Jumpers (continued)

Jumper/Connector Number	Jumper/Connector Name	Configuration	Description
J8	EN_LVPMIC	Option 1: Open (Default)	PMIC Enable signal from 3.3 V Input. J5 must be closed
		Option 2: Pins 1 and 2	PMIC Enable signal path from GUI interface. J5 must be open if this Option is used
		Option 3: Pins 2 and 3	PMIC Enable signal path from pre-regulator PGOOD signal. J5 must be open if this Option is used
J9	PVIN_3V3	Option 1: Pins 1/3 and 2/4 3V3_PREREG (Default)	PVIN_3V3 connected to pre-regulator output. J9-Option-2 must be open and J11 must be open
		Option 2: Pins 5/7 and 6/8 3V3_PS	PVIN_3V3 connected to external 3.3V supply (J1). J9-Option-1 must be open and J11 must be open
J10	SYNCCLKIN	Pins 1 and 2 (Default)	SYNCCLKIN pin connected to MCU clock port (used for testing external clock input signal)
J11	3V3_USB	Open (Default)	
		Closed	PMIC input supply (PVIN_3V3) is generated from USB supply. J9 jumpers must be open if this jumper is closed
J13	CS_SPI_WD	Pins 1 and 2 (Default)	Connects PMIC CS_SPI signal to MCU CS_SPI port directly
		Pins 2 and 3	Connects PMIC CS_SPI signal to MCU CS_SPI port through a level shifter (series resistors must be mounted if this option is used)
J14	WD_DIS	Closed (Default)	Pull down resistor in CS_SPI pin enabled which will disable Q&A watchdog during the PMIC power up. For this to be effective, USB cable should not be connected to the EVM when the PMIC is powered up. If USB cable is connected before PMIC is powered up, USB MCU will drive this pin high (through J13) during the startup
		Open	Q&A watchdog disable function not active during the PMIC power up
J15	VMON1_GPO1	Pins 1 and 2 (Default: open)	Connects PMIC VMON1 signal to MCU port directly
		Pins 2 and 3 (Default: open)	Connects PMIC VMON1 signal to MCU port through level shifter (series resistors must be mounted if this option is used)
J16	nINT	Pins 1 and 2 (Default)	Connects PMIC nINT signal to MCU port directly
		Pins 2 and 3	Connects PMIC nINT signal to MCU port through level shifter (series resistors must be mounted if this option is used)

Table 3-2. Configuration Jumpers (continued)

Jumper/Connector Number	Jumper/Connector Name	Configuration	Description
J17	VMON1_SEL	Pins 1 and 2 (Default: open)	VMON1 reference voltage generated from voltage divider on VIO supply
		Pins 2 and 3 (Default: open)	VMON1 voltage taken from BUCK1 (1.0 V) output
J18	nERR_GPO2	Pins 1 and 2 (Default)	Connects PMIC nERR_GPO signal to MCU port directly
		Pins 2 and 3	Connects PMIC nERR_GPO2 signal to MCU port through level shifter (series resistors must be mounted if this option is used)
J19	nRSTOUT	Pins 1 and 2 (Default)	Connects PMIC nRSTOUT signal to MCU port directly
		Pins 2 and 3	Connects PMIC nRSTOUT signal to MCU port through level shifter (series resistors must be mounted if this option is used)

3.1 Test Points

Table 3-3 lists all the available connectors on the EVM.

Table 3-3. Test Points on the EVM

Connector Number	Connector Name	Description
J2	USB_5V_S	Test point to measure 5 V supply from USB cable
J12	VOUT_VLDO	Test point to measure VOUT_VLDO output
J22	Load Module Connector	Connector placeholder for PMICLOADBOARD EVM for doing load transient testing
J23	Load Module Connector	Connector placeholder for PMICLOADBOARD EVM for doing load transient testing
J24	FB_B1	Test point to measure the BUCK1 feedback signal
J25	FB_B2	Test point to measure the BUCK2 feedback signal
J26	FB_B3	Test point to measure the BUCK3 feedback signal
J28	J28	SMA connector for BUCK3 noise measurement
J30	J30	SMA connector for BUCK2 noise measurement
J32	J32	SMA connector for BUCK1 noise measurement
J36	VBAT_PIN_S	Test point to measure the VBAT input supply

4 Getting Started

In its default configuration, connecting +12 V and GND to the VBAT terminal block (J35) will power up the EVM. While loading the regulators, ensure that input power supply has sufficient current source capabilities to avoid supply voltage collapse due to current limiting.

EVM can also be powered through external 3.3 V input supply or through USB power by modifying jumper settings on the EVM. [Table 4-1](#) describes the jumper settings for different supply options.

Table 4-1. Jumper Connections for Powering the EVM

Power Source	Input Voltage Range	Jumpers
VBAT	5 V - 20 V	Both 3V3_PREREG jumpers in J9 (Default option)
Vin 3.3V	3.1 V - 3.5 V	Remove 3V3_PREREG jumpers on J9 and place them on 3V3_PS position on J9. With this configuration, do not apply power to VBAT terminal
USB	5 V USB cable	J11, 3V3_USB. With this option, jumpers on J9 must be removed.

The LP877451Q1EVM does not require any specific power-down sequence. The EVM can be powered down by turning off the power supply or by toggling the EN Pin off in the GUI, if the GUI control signal is used to enable/disable the device. Refer to [Table 3-2](#) and [GUI section](#) for more information about configuring jumpers and using GUI.

4.1 GUI

Texas Instruments provides a simple to use LP87745-Q1 GUI tool to enable, configure, and evaluate the various features of the LP87745-Q1 device on the EVM. Please refer to the GUI *README.md* file in the GUI tool's *Help->View README.md* tab for a more detailed description of this tool.

The GUI will run on most PC platforms and requires a USB port for connecting the EVM to the host computer. The EVM USB connector is type-C and a type-A to type-C cable is provided along with the EVM to connect to the host computer. EVM will get automatically connected to the GUI after the USB cable is connected and manual assignment of COM port is not necessary. If *Hardware not Connected* displays on the bottom left of the GUI, clicking *Click to connect to hardware* icon next to it will re-establish the connection. The GUI uses the ACctrl COM port which can be found from the device manager of the operating system.

4.2 GUI Installation and working with GUI

The GUI can be found [here](#) and it can be run in browser or it can be installed to the computer. Please refer to the *README.md* file in the GUI tool for a complete guide on how to use the tool.

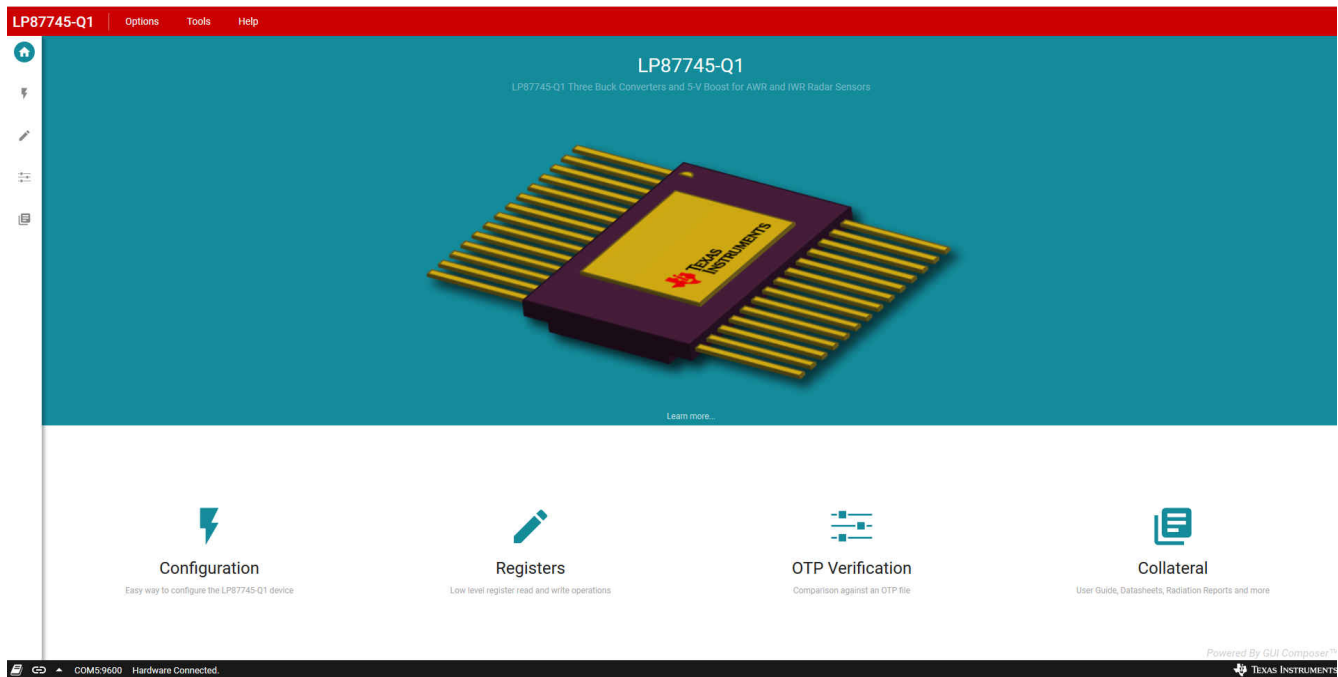


Figure 4-1. GUI Front Page

The EVM can be configured in the configuration page shown in Figure 4-2. By default, all the configuration registers are locked and CRC protected. Clicking the *Unlock registers* check box on the Configuration Page will automatically write REGISTER_LOCK_STATUS = 0x9B to unlock the configuration registers for write operation. CRC can be disabled by writing CONFIG_CRC_EN = 0h through Console window (Options → Show Console) or GUI Register Map Page. For example, output voltages, startup and shutdown delays and peak current limits can be changed for each buck converter.

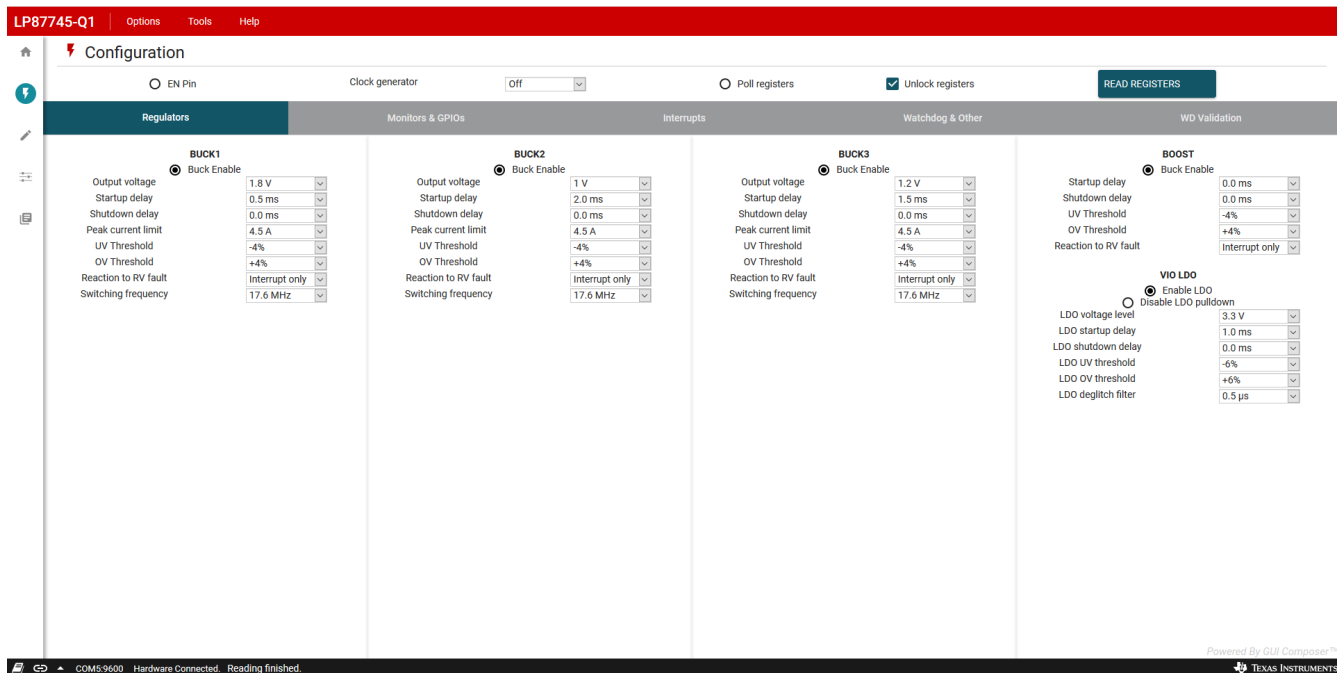


Figure 4-2. GUI Configuration Page

In the register map page shown in Figure 4-3, registers can be read or written to.

LP87745-Q1 Options Tools Help

Register Map Auto Read Off READ REGISTER READ ALL REGISTERS WRITE REGISTER WRITE ALL REGISTERS Deferred Write Immediate Write Deferred Write

Search Registers by name or address (0x...) Search Bitfields Show Bits

Register Name	Address	Value	7	6	5	4	3	2	1	0
DEV_REV	0x01	0x96	1	0	0	1	0	1	1	0
NVM_CODE_1	0x02	0xA1	1	0	1	0	0	0	0	1
NVM_CODE_2	0x03	0x03	0	0	0	0	0	0	1	1
FSM_COMMAND_REG	0x05	0x00	0	0	0	0	0	0	0	0
BLOCK_EN_CTRL	0x06	0xDF	1	1	0	1	1	1	1	1
GPO_CTRL	0x07	0x00								
RECOV_CNTL_CONTROL	0x08	0x00							0	0
ESM_START_REG	0x09	0x00								0
REGISTER_LOCK	0x0A	0x01								1
WD_ANSWER_REG	0x0F	0x00	0	0	0	0	0	0	0	0
WD_ENABLE_REG	0x10	0x03							1	1
WD_MODE_REG	0x11	0x00						0	0	0
BUCK1_VOUT	0x12	0x2D			1	0	1	1	0	1
BUCK2_VOUT	0x13	0x05			0	0	0	1	0	1
BUCK3_VOUT	0x14	0x0F			0	0	1	1	1	1
VMON1_PG_LEVEL	0x15	0x2D			1	0	1	1	0	1
BUCK1_MON_CONF	0x16	0x56	0	1	0	1	0	1	1	0
BUCK2_MON_CONF	0x17	0x56	0	1	0	1	0	1	1	0
BUCK3_MON_CONF	0x18	0x56	0	1	0	1	0	1	1	0
BOOST_MON_CONF	0x19	0x50	0	1	0	1	0	0	0	0
CLK_CONF	0x1A	0x01	0	0	0	0	0	0	0	1
INTERFACE_CONF	0x1B	0x2D	0	0	1	0	1	1	0	1
GPO_CONF	0x1C	0x30	0	0	1	1	0	0	0	0
VCCA_MON_CONF	0x1D	0xF0	1	1	1	1	0	0	0	0
VMON1_MON_CONF	0x1E	0x54	0	1	0	1	0	1	0	0
BUCK_BOOST_DEGLT	0x1F	0x44	0	1	0	0	0	1	0	0

FIELD VIEW

BLOCK_EN_CTRL

DEVICE / BLOCK_EN_CTRL / BUCK1_EN[0] BUCK1_EN Enabled

DEVICE / BLOCK_EN_CTRL / BUCK2_EN[1] BUCK2_EN Enabled

DEVICE / BLOCK_EN_CTRL / BUCK3_EN[2] BUCK3_EN Enabled

DEVICE / BLOCK_EN_CTRL / BOOST_EN[3] BOOST_EN Enabled

DEVICE / BLOCK_EN_CTRL / VIO_LDO_EN[4] VIO_LDO_EN Enabled

DEVICE / BLOCK_EN_CTRL / VMON1_GPO1_EN[5] VMON1_GPO1_EN Disabled

DEVICE / BLOCK_EN_CTRL / GPO2_EN[6]

Hardware Connected

Figure 4-3. GUI Register Map Page

5 Watchdog

This section provides the basic overview of the SPI based Q&A watchdog algorithm implemented on the EVM. Please refer LP87745-Q1 device data sheet for more detailed information about device watchdog functionality. This watchdog requires specific SPI messages from the host MCU in specific time intervals to detect correct operation of the MCU. On the EVM, MSP432 MCU is used as a host MCU.

During operation, the device provides a 4-bit question for the MCU and the MCU calculates the required 32-bit answer. This answer is split into four answer bytes: Answer-3, Answer-2, Answer-1 and Answer-0. The MCU writes these answer bytes one byte at a time into WD_ANSWER[7:0] from the SPI interface.

A good event occurs when the MCU sends the correct answer-bytes calculated for the current question in the correct watchdog window and in the correct sequence. This sequence is visualized in [Figure 5-1](#)

A bad event occurs when one of the events that follows occur:

- The MCU sends the correct answer-bytes, but not in the correct watchdog window.
- The MCU sends incorrect answer-bytes.
- The MCU returns correct answer-bytes, but in the incorrect sequence.

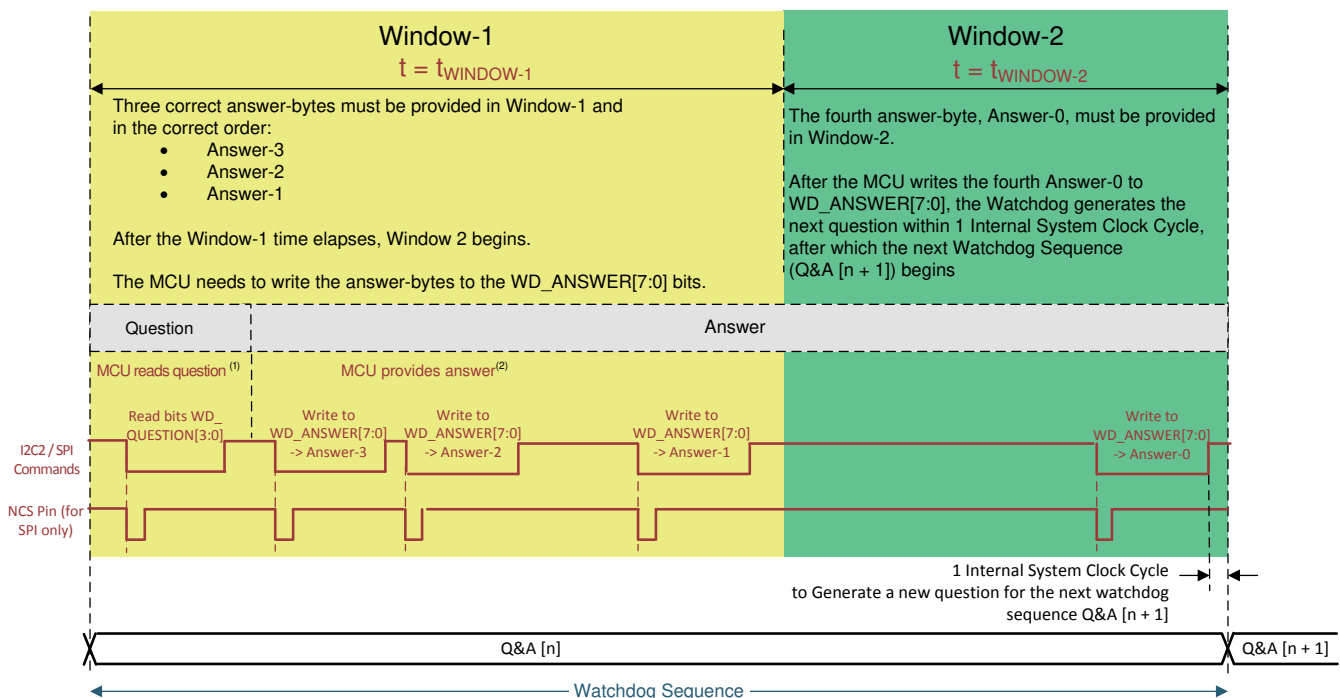


Figure 5-1. Watchdog Sequence in Q&A Mode

6 Schematics, Layout and BOM

This section contains the schematics, layout and the bill of materials for the LP87745Q1EVM.

6.1 Schematic Diagram

This section includes images of the EVM schematics and different layers of the layout.

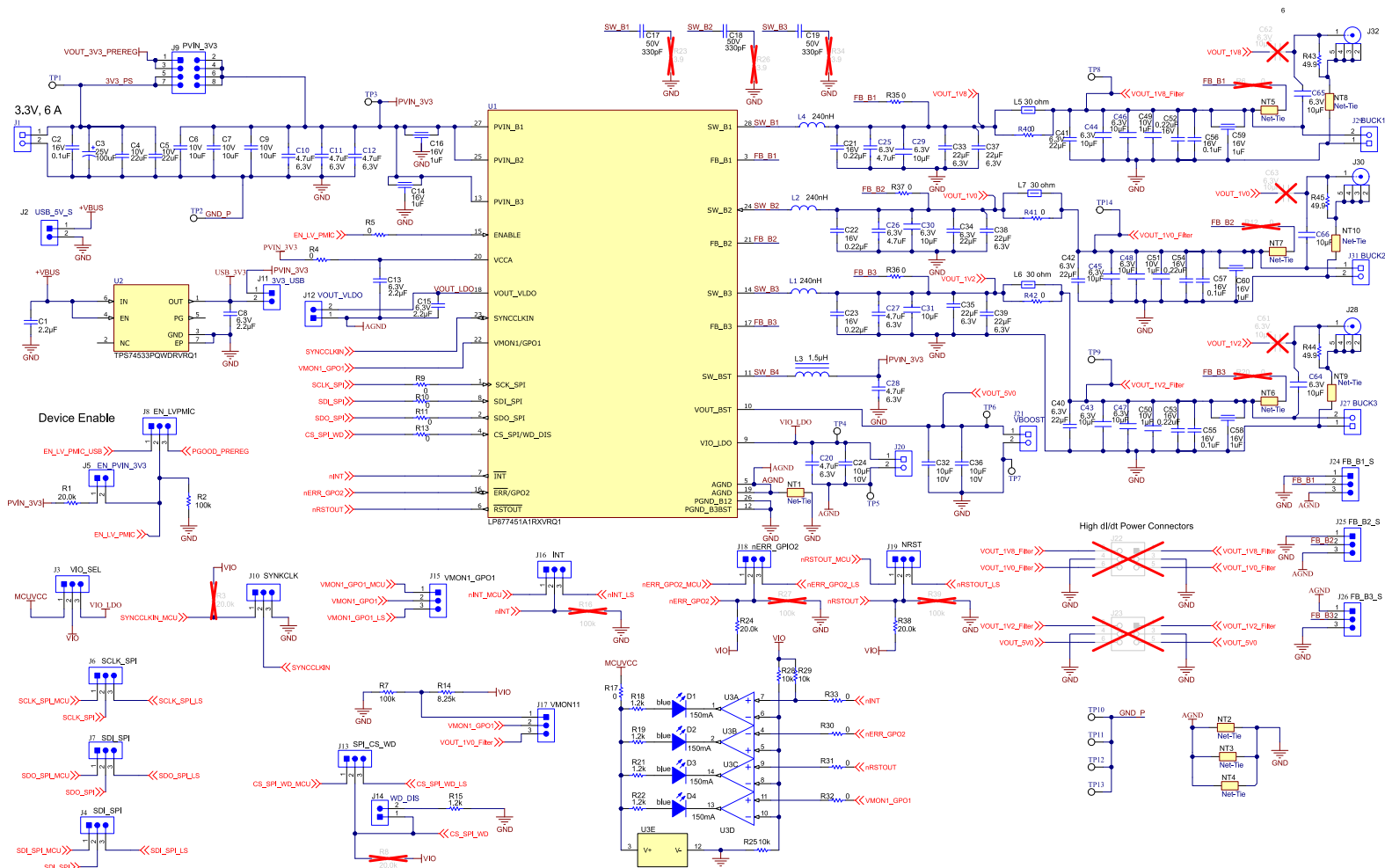


Figure 6-1. PMIC Schematic

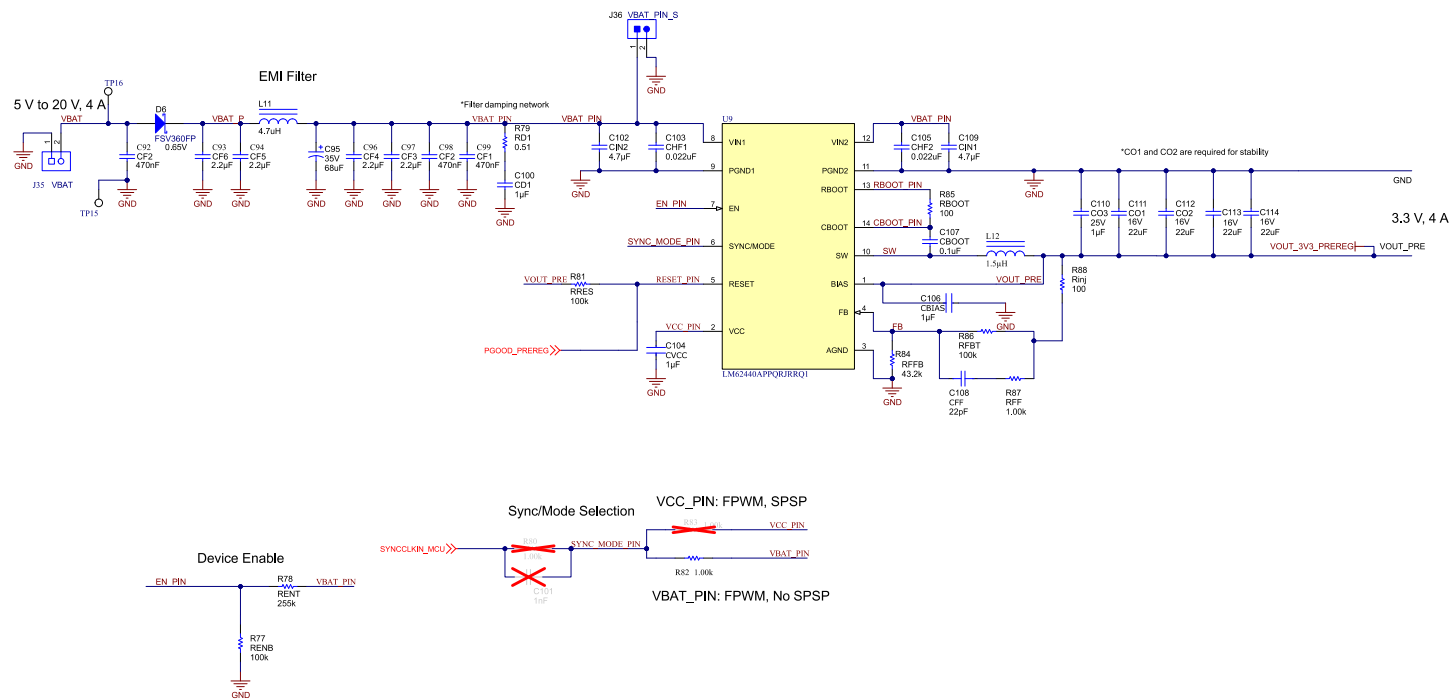


Figure 6-2. Preregulator Schematic

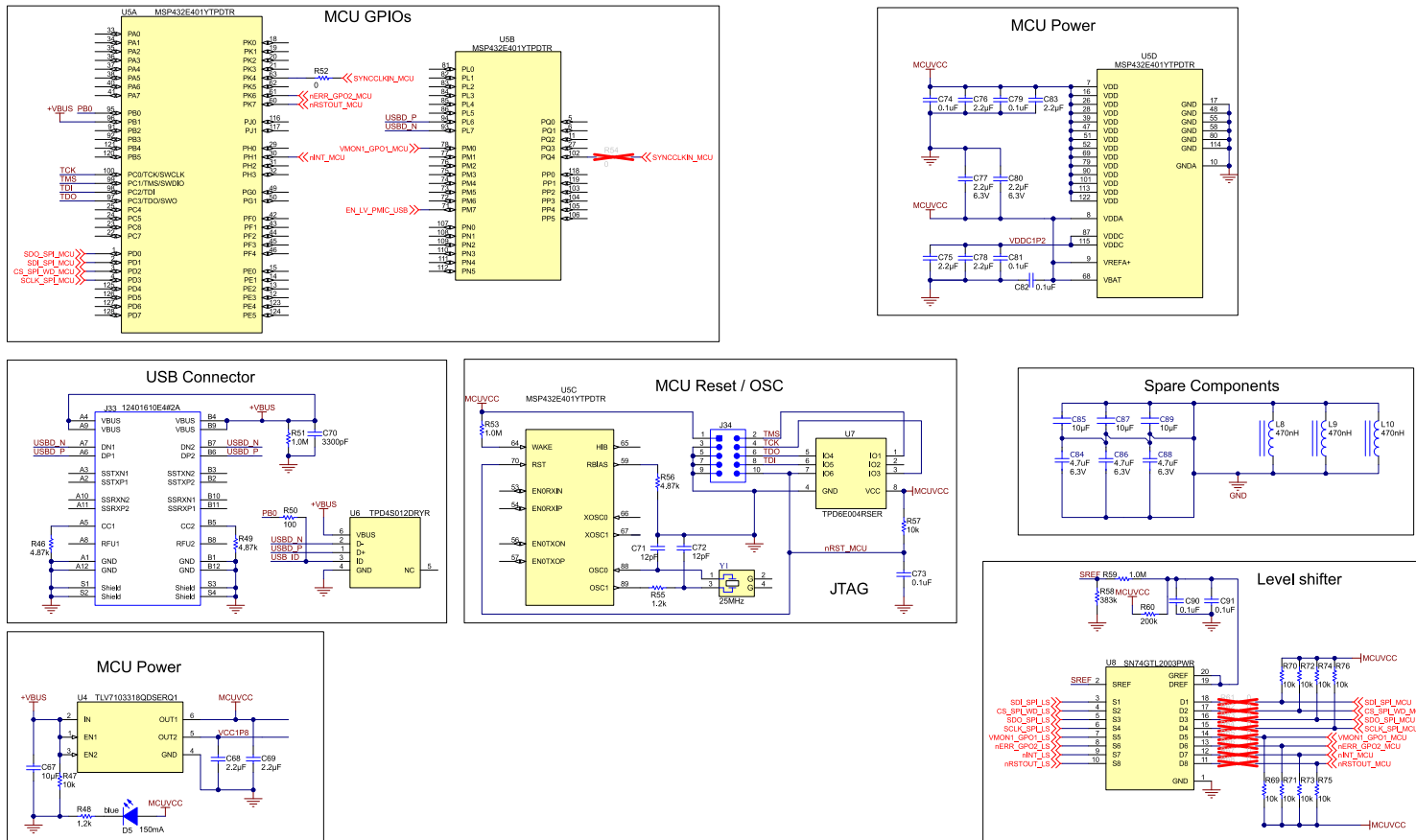


Figure 6-3. MCU Schematic

6.2 PCB Layer Diagram

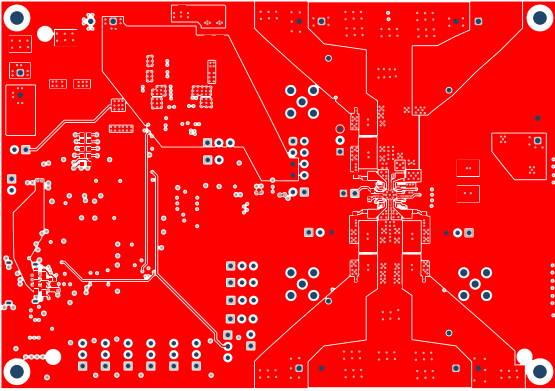


Figure 6-4. Layout of Top Layer, Layer 1

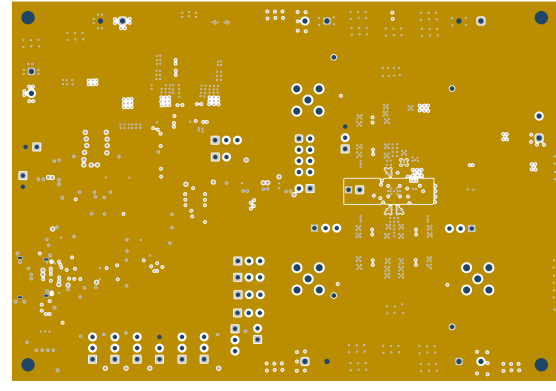


Figure 6-5. Layout of Ground layer 1, Layer 2

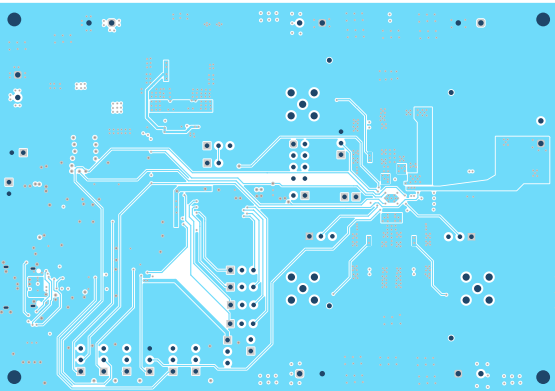


Figure 6-6. Layout of Signal Layer 1, Layer 3

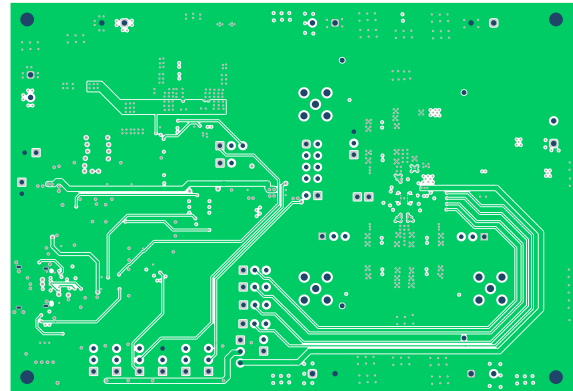


Figure 6-7. Layout of Signal Layer 2, Layer 4

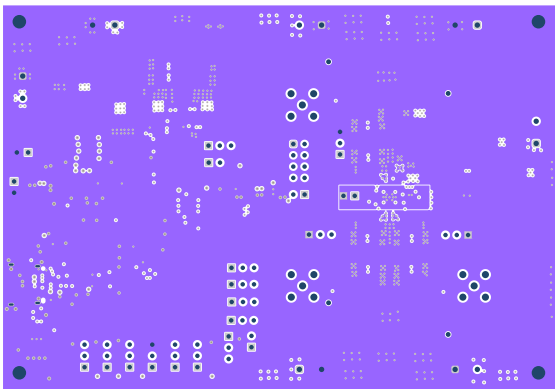


Figure 6-8. Layout of Ground Layer 2, Layer 5

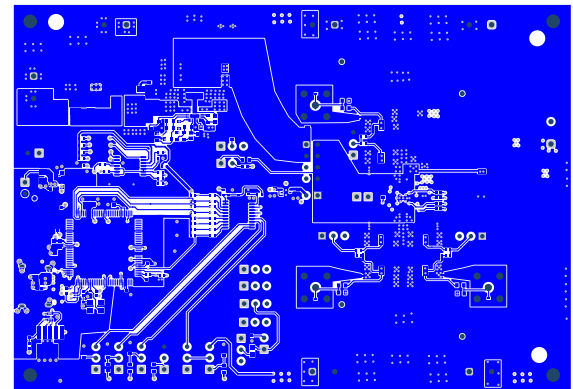


Figure 6-9. Layout of Bottom Layer, Layer 6

6.3 Part List

Table 6-1 lists all the components on the EVM.

Table 6-1. Parts List

Designator	Quantity	Description	Part Number	Manufacturer
!PCB1	1	Printed Circuit Board	BMC083	Any
C1, C8, C68, C69, C75, C76, C77, C78, C80, C83	10	CAP, CERM, 2.2 uF, 6.3 V, +/- 10%, X7R, AEC-Q200 Grade 1, 0603	GCM188R70J225KE22D	MuRata
C2, C55, C56, C57, C73, C74, C79, C81, C82, C90, C91	11	CAP, CERM, 0.1 uF, 16 V, +/- 10%, X7R, 0402	GCM155R71C104KA55D	MuRata
C3	1	CAP, Polymer Hybrid, 100 uF, 25 V, +/- 20%, 30 ohm, 6.3x7.7 SMD	EEHZC1E101XP	Panasonic
C4, C5	2	CAP, CERM, 22 uF, 10 V, +/- 10%, X7R, AEC-Q200 Grade 1, 1206	GCM31CR71A226KE02L	MuRata
C6, C7, C9, C24, C32, C36, C67	7	CAP, CERM, 10 uF, 10 V, +/- 10%, X7R, 0805	GCM21BR71A106KE22L	MuRata
C10, C11, C12, C20, C25, C26, C27, C28, C84, C86, C88	11	Cap Ceramic Multilayer 4.7uF 6.3V DC 10% SMD Paper T/R	GCJ188C70J475KE02J	Murata
C13, C15	2	CAP, CERM, 2.2 uF, 6.3 V, +/- 10%, X7R, 0603	GCM188R70J225KE22J	MuRata
C14, C16, C58, C59, C60	5	3 Terminals Low ESL Chip Multilayer Ceramic Capacitors for Automotive	NFM18HC105C1C3D	Murata
C17, C18, C19	3	CAP, CERM, 330 pF, 50 V, +/- 10%, X7R, 0402	GRM155R71H331KA01D	MuRata
C21, C22, C23	3	CAP, CERM, 0.22 uF, 16 V, +/- 10%, X7R, AEC-Q200 Grade 1, 0402	GCM155R71C224KE02D	MuRata
C29, C30, C31, C43, C44, C45, C46, C47, C48, C64, C65, C66, C85, C87, C89	15	Chip Multilayer Ceramic Capacitors for Automotive	GCM188D70J106ME36D	Murata
C33, C34, C35, C37, C38, C39, C40, C41, C42	9	CAP, CERM, 22 uF, 6.3 V, +/- 20%, X7T, AEC-Q200 Grade 1, 0805	CGA4J1X7T0J226M	TDK
C49, C50, C51, C104, C106	5	CAP CER 0603 1UF 10V X7R 10%	C0603C105K8RACAUTO	KEMET
C52, C53, C54	3	CAP, CERM, 0.22 uF, 16 V, +/- 10%, X7R, 0402	GRM155R71C224KA12D	MuRata
C70	1	CAP, CERM, 3300 pF, 50 V, +/- 10%, X7R, 0603	C0603C332K5RACTU	Kemet
C71, C72	2	CAP, CERM, 12 pF, 50 V, +/- 5%, COG/NP0, AEC-Q200 Grade 1, 0402	CGA2B2C0G1H120J050BA	TDK
C92, C98, C99	3	CAP, CERM, 0.47 uF, 50 V, +/- 10%, X7R, AEC-Q200 Grade 1, 0603	CGA3E3X7R1H474K080AE	TDK
C93, C94, C96, C97	4	CAP, CERM, 2.2 uF, 50 V, +/- 10%, X7R, AEC-Q200 Grade 1, 0805	CGA4J3X7R1H225K125AB	TDK
C95	1	CAP, Polymer Hybrid, 68 uF, 35 V, +/- 20%, 35 ohm, 6.3x7.7 SMD	EEHZC1V680XP	Panasonic
C100	1	CAP, CERM, 1 uF, 50 V, +/- 10%, X7R, 0603	UMK107AB7105KA-T	Taiyo Yuden

Table 6-1. Parts List (continued)

Designator	Quantity	Description	Part Number	Manufacturer
C102, C109	2	CAP, CERM, 4.7 μ F, 50 V, +/- 20%, X7R, AEC-Q200 Grade 1, 1210	UMK325B7475MMHT	Taiyo Yuden
C103, C105	2	CAP, CERM, 0.022 μ F, 50 V, +/- 10%, X7R, 0402	GRM155R71H223KA12D	MuRata
C107	1	CAP, CERM, 0.1 μ F, 10 V, +/- 10%, X7R, 0603	C0603X104K8RACTU	Kemet
C108	1	C0603 22 pF X7R 30ppm/ $^{\circ}$ C 10.00% 50 V	C0603C220K5RACAUTO	KEMET
C110	1	CAP, CERM, 1 μ F, 25 V, +/- 10%, X7R, 0805	C0805C105K3RACTU	Kemet
C111, C112, C113, C114	4	CAP, CERM, 22 μ F, 16 V, +/- 20%, X7R, AEC-Q200 Grade 1, 1210	CGA6P1X7R1C226M250AC	TDK
D1, D2, D3, D4, D5	5	LED, Blue, SMD	LB Q39G-L2N2-35-1	OSRAM
D6	1	Diode, Schottky, 60 V, 3 A, AEC-Q101, SOD-123HE	FSV360FP	Fairchild Semiconductor
H1, H4, H5, H7	4		FC2058-440-A	Fascomp
H2, H3, H6, H8	4	MACHINE SCREW PAN PHILLIPS 4-40	9900	Keystone
J1, J20, J21, J27, J29, J31, J35	7	Terminal Block, 5mm, 2x1, R/A, TH	1792863	Phoenix Contact
J2, J5, J11, J12, J14, J36	6	Header, 100mil, 2x1, Gold, TH	HTSW-102-07-G-S	Samtec
J3, J4, J6, J7, J8, J10, J13, J15, J16, J17, J18, J19, J24, J25, J26	15	Header, 100mil, 3x1, Gold, TH	HTSW-103-07-G-S	Samtec
J9	1	Header, 2.54mm, 4x2, Gold, TH	TSW-104-08-L-D	Samtec
J28, J30, J32	3	SMA Jack, Straight, 50 Ohm, Gold, TH	SMA-J-P-H-ST-TH1	Samtec
J33	1	Receptacle, 0.5mm, USB TYPE C, R/A, SMT	12401610E4#2A	Amphenol Canada
J34	1	Header (Shrouded), 1.27mm, 5x2, Gold, SMT	FTSH-105-01-F-DV-K	Samtec
L1, L2, L4	3	240nH Shielded Thin Film Inductor 5A 23mOhm Max 0806 (2016 Metric)	TFM201610ALMAR24MTAA	TDK
L3	1	Inductor, Shielded, Metal Composite, 1.5 μ H, 2.3 A, 0.11 ohm, AEC-Q200 Grade 0, SMD	TFM201610ALMA1R5MTAA	TDK
L5, L6, L7	3	Ferrite Bead, 30 ohm @ 100 MHz, 6 A, 0805	MPZ2012S300AT000	TDK
L8, L9, L10	3	Inductor, Shielded, Metal Composite, 470 nH, 3.9 A, 0.039 ohm, AEC-Q200 Grade 0, SMD	TFM201610ALMAR47MTAA	TDK
L11	1	Inductor, Shielded, Composite, 4.7 uH, 4.5 A, 0.0401 ohm, SMD	XAL4030-472MEB	Coilcraft
L12	1	Inductor, Shielded, Metal Composite, 1.5 μ H, 5.8 A, 0.019 ohm, SMD	74438356015	Würth Elektronik
LBL1	1		THT-14-423-10	Brady
R1, R24, R38	3	RES, 20.0 k, 1%, 0.1 W, AEC-Q200 Grade 0, 0603	CRCW060320K0FKEA	Vishay-Dale
R2, R7, R77, R81, R86	5	RES, 100 k, 1%, 0.1 W, 0603	RC0603FR-07100KL	Yageo
R4	1	RES, 0, 0%, 0.2 W, AEC-Q200 Grade 0, 0402	CRCW04020000Z0EDHP	Vishay-Dale

Table 6-1. Parts List (continued)

Designator	Quantity	Description	Part Number	Manufacturer
R5, R9, R10, R11, R13, R17, R30, R31, R32, R33	10	RES, 0, 5%, 0.063 W, AEC-Q200 Grade 0, 0402	CRCW04020000Z0ED	Vishay-Dale
R14	1	RES, 8.25 k, 1%, 0.1 W, AEC-Q200 Grade 0, 0603	CRCW06038K25FKEA	Vishay-Dale
R15, R18, R19, R21, R22, R48, R55	7	RES, 1.2 k, 5%, 0.063 W, AEC-Q200 Grade 0, 0402	CRCW04021K20JNED	Vishay-Dale
R25, R28, R29, R47, R57, R69, R70, R71, R72, R73, R74, R75, R76	13	RES, 10 k, 5%, 0.063 W, AEC-Q200 Grade 0, 0402	CRCW040210K0JNED	Vishay-Dale
R35, R36, R37, R52	4	RES, 0, 5%, 0.1 W, AEC-Q200 Grade 0, 0402	ERJ-2GE0R00X	Panasonic
R40, R41, R42	3	RES 0 OHM JUMPER 1/4W 0603	HCJ0603ZT0R00	Stackpole Electronics
R43, R44, R45	3	RES, 49.9, 1%, 0.063 W, AEC-Q200 Grade 0, 0402	RMCF0402FT49R9	Stackpole Electronics Inc
R46, R49, R56	3	RES, 4.87 k, 1%, 0.063 W, AEC-Q200 Grade 0, 0402	CRCW04024K87FKED	Vishay-Dale
R50	1	RES, 100, 5%, 0.063 W, AEC-Q200 Grade 0, 0402	CRCW0402100RJNED	Vishay-Dale
R51, R53, R59	3	RES, 1.0 M, 5%, 0.063 W, AEC-Q200 Grade 0, 0402	CRCW04021M00JNED	Vishay-Dale
R58	1	RES, 383 k, 1%, 0.063 W, AEC-Q200 Grade 0, 0402	CRCW0402383KFKED	Vishay-Dale
R60	1	RES, 200 k, 5%, 0.063 W, AEC-Q200 Grade 0, 0402	CRCW0402200KJNED	Vishay-Dale
R78	1	RES, 255 k, 1%, 0.1 W, 0603	RC0603FR-07255KL	Yageo
R79	1	RES, 0.51, 1%, 0.25 W, 0805	CRM0805-FX-R510ELF	Bourns
R82	1	RES, 1.00 k, 1%, 0.1 W, 0603	RC0603FR-071KL	Yageo
R84	1	RES, 43.2 k, 1%, 0.1 W, AEC-Q200 Grade 0, 0603	CRCW060343K2FKEA	Vishay-Dale
R85	1	RES, 100, 5%, 0.1 W, AEC-Q200 Grade 0, 0603	CRCW0603100RJNEA	Vishay-Dale
R87	1	RES, 1.00 k, 1%, 0.1 W, 0603	ERJ-3EKF1001V	Panasonic
R88	1	RES, 100, 1%, 0.1 W, 0603	RC0603FR-07100RL	Yageo
SH-J1, SH-J2, SH-J3, SH-J4, SH-J5, SH-J6, SH-J7, SH-J8, SH-J9, SH-J10, SH-J11, SH-J12, SH-J13, SH-J14, SH-J15	15	Shunt, 100mil, Gold plated, Black	881545-2	TE Connectivity
TP1, TP2, TP3, TP4, TP5, TP6, TP7, TP8, TP9, TP10, TP11, TP12, TP13, TP14, TP15, TP16	16	Test Point, Compact, SMT	5016	Keystone
U1	1	Three Buck Converters and 5-V Boost for AWR and IWR Radar Sensors	LP877451A1RXVRQ1	Texas Instruments
U2	1	Linear Voltage Regulator IC 1 Output 500mA 6-WSON (2x2)	TPS74533PQWDRVRQ1	Texas Instruments
U3	1	AEC-Q100 Quad Comparator, PW0014A (TSSOP-14)	LM2901AVQPWRQ1	Texas Instruments

Table 6-1. Parts List (continued)

Designator	Quantity	Description	Part Number	Manufacturer
U4	1	Automotive Catalog, Dual, 200mA, Low-IQ Low-Dropout Regulator for Portable Devices, DSE0006A (WSON-6)	TLV7103318QDSERQ1	Texas Instruments
U5	1	MSP432E401YTPDT, PDT0128A (TQFP-128)	MSP432E401YTPDTR	Texas Instruments
U6	1	4-Channel USB ESD Solution with Power Clamp, DRY0006A (USON-6)	TPD4S012DRYR	Texas Instruments
U7	1	Low-Capacitance 6-Channel +/-15 kV ESD Protection Array for High-Speed Data Interfaces, RSE0008A (UQFN-8)	TPD6E004RSER	Texas Instruments
U8	1	8-BIT BIDIRECTIONAL LOW-VOLTAGE TRANSLATOR, PW0020A (TSSOP-20)	SN74GTL2003PWR	Texas Instruments
U9	1	Automotive 4 A Low Noise Synchronous Buck Regulators, RJR0014A (VQFN-HR-14)	LM62440APPQRJRRQ1	Texas Instruments
Y1	1	Crystal, 25 MHz, 8pF, SMD	CX3225CA25000D0HSSCC	Kyocera
C61, C62, C63	0	Chip Multilayer Ceramic Capacitors for Automotive	GCM188D70J106ME36D	Murata
C101	0	CAP, CERM, 1000 pF, 50 V, +/- 10%, X7R, 0603	C0603C102K5RACTU	Kemet
J22, J23	0	Receptacle, 2.5mm, 3x2, Gold, SMT	6651712-1	TE Connectivity
R3, R8	0	RES, 20.0 k, 1%, 0.1 W, AEC-Q200 Grade 0, 0603	CRCW060320K0FKEA	Vishay-Dale
R6, R12, R20, R61, R62, R63, R64, R65, R66, R67, R68	0	RES, 0, 5%, 0.063 W, AEC-Q200 Grade 0, 0402	CRCW04020000Z0ED	Vishay-Dale
R16, R27, R39	0	RES, 100 k, 1%, 0.1 W, 0603	RC0603FR-07100KL	Yageo
R23, R26, R34	0	RES, 3.9, 5%, 0.1 W, AEC-Q200 Grade 0, 0603	CRCW06033R90JNEA	Vishay-Dale
R54	0	RES, 0, 5%, 0.1 W, AEC-Q200 Grade 0, 0402	ERJ-2GE0R00X	Panasonic
R80, R83	0	RES, 1.00 k, 1%, 0.1 W, 0603	RC0603FR-071KL	Yageo

IMPORTANT NOTICE AND DISCLAIMER

TI PROVIDES TECHNICAL AND RELIABILITY DATA (INCLUDING DATA SHEETS), DESIGN RESOURCES (INCLUDING REFERENCE DESIGNS), APPLICATION OR OTHER DESIGN ADVICE, WEB TOOLS, SAFETY INFORMATION, AND OTHER RESOURCES "AS IS" AND WITH ALL FAULTS, AND DISCLAIMS ALL WARRANTIES, EXPRESS AND IMPLIED, INCLUDING WITHOUT LIMITATION ANY IMPLIED WARRANTIES OF MERCHANTABILITY, FITNESS FOR A PARTICULAR PURPOSE OR NON-INFRINGEMENT OF THIRD PARTY INTELLECTUAL PROPERTY RIGHTS.

These resources are intended for skilled developers designing with TI products. You are solely responsible for (1) selecting the appropriate TI products for your application, (2) designing, validating and testing your application, and (3) ensuring your application meets applicable standards, and any other safety, security, regulatory or other requirements.

These resources are subject to change without notice. TI grants you permission to use these resources only for development of an application that uses the TI products described in the resource. Other reproduction and display of these resources is prohibited. No license is granted to any other TI intellectual property right or to any third party intellectual property right. TI disclaims responsibility for, and you will fully indemnify TI and its representatives against, any claims, damages, costs, losses, and liabilities arising out of your use of these resources.

TI's products are provided subject to [TI's Terms of Sale](#) or other applicable terms available either on ti.com or provided in conjunction with such TI products. TI's provision of these resources does not expand or otherwise alter TI's applicable warranties or warranty disclaimers for TI products.

TI objects to and rejects any additional or different terms you may have proposed.

Mailing Address: Texas Instruments, Post Office Box 655303, Dallas, Texas 75265
Copyright © 2022, Texas Instruments Incorporated