

Using the TPS3619 With MSP430™ Microcontrollers Can Reduce System Power Consumption With Charge Pumps

Dennis Hudgins

Power Management Products

ABSTRACT

The MSP430™ microcontrollers (MCUs) are ideal in applications in which battery life is critical. These microcontrollers require only 0.1 μA of current in low-power RAM retention mode. In this mode, the MCU must have power to retain volatile memory. In some systems with charge pumps, the TPS3619 can be used to shut down the charge pump to save system power consumption.

Trademarks

MSP430 is a trademark of Texas Instruments.
 All other trademarks are the property of their respective owners.

1 Using the TPS3619 With MSP430 Microcontrollers

For many portable-power applications, the power consumed during shutdown mode is more critical than power consumed while active. This is particularly true for portable monitoring equipment such as digital thermometers, blood glucose meters, or battery-powered blood pressure monitors. In these applications, measurements are made, calculations are performed, and the result is displayed on a liquid crystal display (LCD) or stored in memory for future retrieval. To conserve battery life, the circuit usually enters a low-power sleep or standby mode between measurements. Because such a device may be active only a small percentage of the total time, the current drain on the battery during sleep mode significantly affects battery life.

Due to the volatile nature of the internal RAM of the microcontroller, a voltage source must be applied to retain data stored in RAM. In some systems that use charge pumps, a battery backup supervisor such as the TPS3619 lets the power supply to be disabled. The TPS3619 lets the battery directly supply power to the MSP430 MCU when the power supply is disabled, which saves system power consumption when the MSP430 MCU is in a low-power mode. [Figure 1](#) shows a typical application that uses the TPS3619 and a charge pump with an MSP430 MCU.

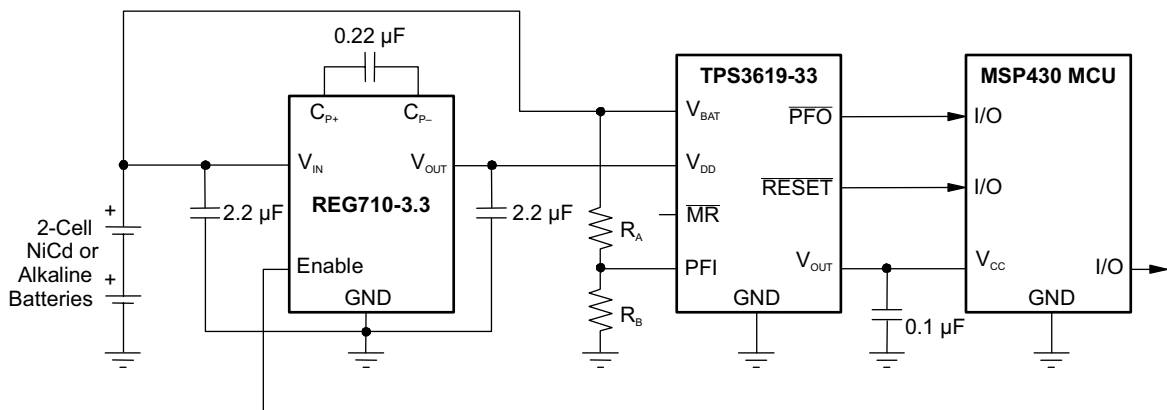


Figure 1. 2-Cell Battery to 3.3-V Power Solution for MSP430 MCU With SVS for RAM Retention

The circuit in [Figure 1](#) uses the REG710 charge pump to perform the 3.3-V power conversion from 2-cell alkaline or NiCad batteries. If desired, any other 2-cell boost converter with an enable feature can be used.

When the MSP430 MCU has processed and stored the data, the device can disable the REG710. When the REG710 is disabled, the output voltage decreases until the voltage falls below the internal trip voltage, V_{IT} . The backup supervisor now switches V_{OUT} from output of the REG710 to the V_{BAT} input. At the same time, the \overline{RESET} pin goes low. This pin can be used to monitor when the SVS enters battery-backup mode. Using the reset signal from the TPS3619 to reset the MCU is not necessary, because the MSP430 MCU is powered directly from the battery. Doing so can make microcontroller latch in the reset state. If the reset function is required, the TPS3606 can be used in place of the TPS3619.

In addition to providing a battery-backup function, the TPS3619 can provide a low-battery detection function through the PFI pin. The PFI input of the TPS3619 connects to an internal comparator that has a 1.15-V threshold. When the voltage on the PFI pin falls below 1.15 V, the voltage at \overline{PFO} goes low. Resistors R_A and R_B can be used to set a user-defined low-battery threshold and must be used for the MSP430 MCU, because the minimum operating voltage for the MSP430 is 1.8 V. This can be used to send a low-battery indicator to the user or to trigger the microcontroller to enter a low-power mode of operation. Because the input current of the PFI pin can cause an error in the sensed voltage, the parallel combination of R_A and R_B should be below 1 M Ω .

The low-battery detection feature is optional, and the designer should consider the amount of constant-current draw required by resistors R_A and R_B . Resistors R_A and R_B require approximately 2 μ A (2 V/1 M Ω) of constant current. In many cases, the MSP430 MCU provides a low-battery detection feature on-chip that does not require constant current and provides a lower system-current option.

By using the TPS3619, the amount of current saved in low-power mode is approximately 65 μ A. When the TPS3619 is in battery-backup mode, the current drawn from the battery is decreased to a maximum of only 0.5 μ A. While active, the supply current required by the TPS3619-33 is typically only 17 μ A.

Revision History

NOTE: Page numbers for previous revisions may differ from page numbers in the current version.

Changes from May 19, 2003 to August 6, 2018

Page

-
- Editorial and formatting changes throughout document..... 1
-

IMPORTANT NOTICE FOR TI DESIGN INFORMATION AND RESOURCES

Texas Instruments Incorporated ("TI") technical, application or other design advice, services or information, including, but not limited to, reference designs and materials relating to evaluation modules, (collectively, "TI Resources") are intended to assist designers who are developing applications that incorporate TI products; by downloading, accessing or using any particular TI Resource in any way, you (individually or, if you are acting on behalf of a company, your company) agree to use it solely for this purpose and subject to the terms of this Notice.

TI's provision of TI Resources does not expand or otherwise alter TI's applicable published warranties or warranty disclaimers for TI products, and no additional obligations or liabilities arise from TI providing such TI Resources. TI reserves the right to make corrections, enhancements, improvements and other changes to its TI Resources.

You understand and agree that you remain responsible for using your independent analysis, evaluation and judgment in designing your applications and that you have full and exclusive responsibility to assure the safety of your applications and compliance of your applications (and of all TI products used in or for your applications) with all applicable regulations, laws and other applicable requirements. You represent that, with respect to your applications, you have all the necessary expertise to create and implement safeguards that (1) anticipate dangerous consequences of failures, (2) monitor failures and their consequences, and (3) lessen the likelihood of failures that might cause harm and take appropriate actions. You agree that prior to using or distributing any applications that include TI products, you will thoroughly test such applications and the functionality of such TI products as used in such applications. TI has not conducted any testing other than that specifically described in the published documentation for a particular TI Resource.

You are authorized to use, copy and modify any individual TI Resource only in connection with the development of applications that include the TI product(s) identified in such TI Resource. NO OTHER LICENSE, EXPRESS OR IMPLIED, BY ESTOPPEL OR OTHERWISE TO ANY OTHER TI INTELLECTUAL PROPERTY RIGHT, AND NO LICENSE TO ANY TECHNOLOGY OR INTELLECTUAL PROPERTY RIGHT OF TI OR ANY THIRD PARTY IS GRANTED HEREIN, including but not limited to any patent right, copyright, mask work right, or other intellectual property right relating to any combination, machine, or process in which TI products or services are used. Information regarding or referencing third-party products or services does not constitute a license to use such products or services, or a warranty or endorsement thereof. Use of TI Resources may require a license from a third party under the patents or other intellectual property of the third party, or a license from TI under the patents or other intellectual property of TI.

TI RESOURCES ARE PROVIDED "AS IS" AND WITH ALL FAULTS. TI DISCLAIMS ALL OTHER WARRANTIES OR REPRESENTATIONS, EXPRESS OR IMPLIED, REGARDING TI RESOURCES OR USE THEREOF, INCLUDING BUT NOT LIMITED TO ACCURACY OR COMPLETENESS, TITLE, ANY EPIDEMIC FAILURE WARRANTY AND ANY IMPLIED WARRANTIES OF MERCHANTABILITY, FITNESS FOR A PARTICULAR PURPOSE, AND NON-INFRINGEMENT OF ANY THIRD PARTY INTELLECTUAL PROPERTY RIGHTS.

TI SHALL NOT BE LIABLE FOR AND SHALL NOT DEFEND OR INDEMNIFY YOU AGAINST ANY CLAIM, INCLUDING BUT NOT LIMITED TO ANY INFRINGEMENT CLAIM THAT RELATES TO OR IS BASED ON ANY COMBINATION OF PRODUCTS EVEN IF DESCRIBED IN TI RESOURCES OR OTHERWISE. IN NO EVENT SHALL TI BE LIABLE FOR ANY ACTUAL, DIRECT, SPECIAL, COLLATERAL, INDIRECT, PUNITIVE, INCIDENTAL, CONSEQUENTIAL OR EXEMPLARY DAMAGES IN CONNECTION WITH OR ARISING OUT OF TI RESOURCES OR USE THEREOF, AND REGARDLESS OF WHETHER TI HAS BEEN ADVISED OF THE POSSIBILITY OF SUCH DAMAGES.

You agree to fully indemnify TI and its representatives against any damages, costs, losses, and/or liabilities arising out of your non-compliance with the terms and provisions of this Notice.

This Notice applies to TI Resources. Additional terms apply to the use and purchase of certain types of materials, TI products and services. These include; without limitation, TI's standard terms for semiconductor products (<http://www.ti.com/sc/docs/stdterms.htm>), [evaluation modules](#), and [samples](http://www.ti.com/sc/docs/sampterm.htm) (<http://www.ti.com/sc/docs/sampterm.htm>).

Mailing Address: Texas Instruments, Post Office Box 655303, Dallas, Texas 75265
Copyright © 2018, Texas Instruments Incorporated