

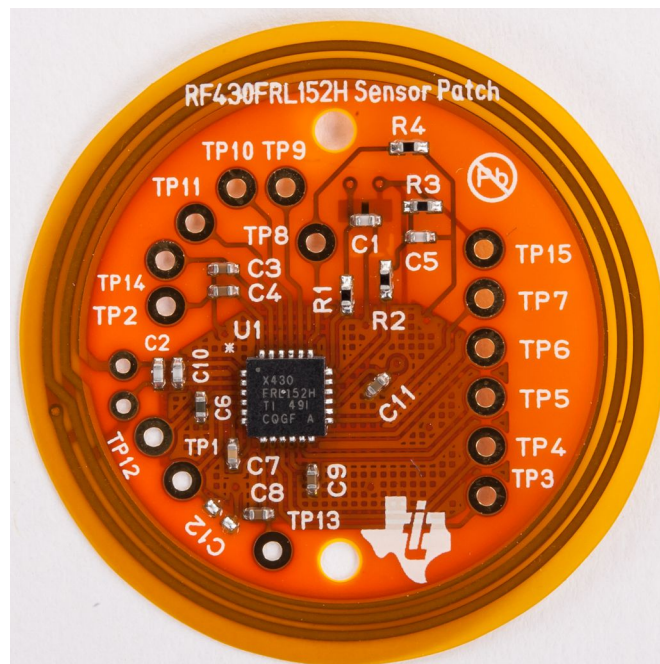
Battery-Less NFC/RFID Temperature Sensing Patch

Eddie LaCost

ABSTRACT

NFC/RFID enables communication with transponders. The transponders include memory that can store various information including URLs, Bluetooth® connection handover, contact information, diagnostics, and now sensor measurement data. Battery-less sensor measurements that utilize energy harvesting from the RF field can be implemented in applications ranging from medical, health and fitness, and industrial where instantaneous measurements are required and a battery is not feasible or desired. This application report discusses the implementation of a single chip NFC/RFID field powered temperature sensor system with the RF430FRL152H.

Project collateral discussed in this application report can be downloaded from www.ti.com/lit/zip/sloc322.



Contents

1	Reference Design Hardware	2
2	Firmware Implementation	4
3	Demonstration With TRF7970AEVM	5
4	Antenna Design	9
5	References	10

List of Figures

1	RF430FRL152H NFC Temperature Sensor Schematic	3
2	RF430FRL152H NFC Temperature Sensor Board Layout	4
3	Connect to TRF7970AEVM	5
4	Select RF430FRL152H Patch.....	6
5	Start Demo	7
6	Temperature Measurements	8
7	Coil Inductance.....	9
8	Resonant Frequency.....	10

Trademarks

Bluetooth is a registered trademark of Bluetooth SIG, Inc.
All other trademarks are the property of their respective owners.

1 Reference Design Hardware

The schematic and layout are shown in [Figure 1](#) and [Figure 2](#). The design keeps a low component count by using integrated features of the RF430FRL152H such as the internal A/D converter and ROM functions for acquiring sensor measurements from a thermistor (RT1). This design also offers the flexibility to include a 1.5 V battery at TP1/TP2 if data logging is required and the RF field will not always be available to provide power. The hatched ground pour is used for improved RF performance.

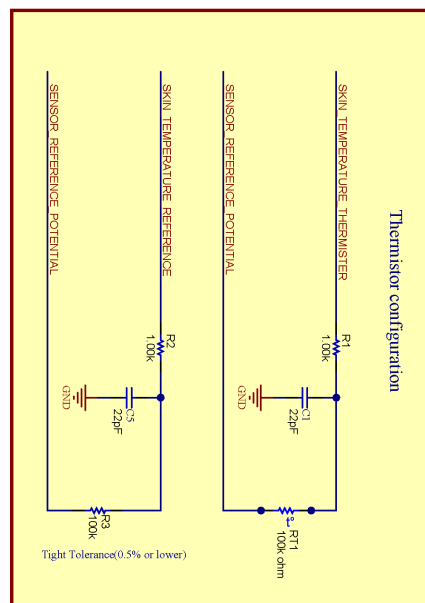
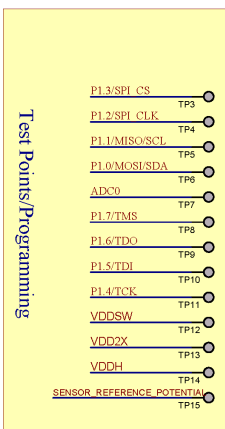
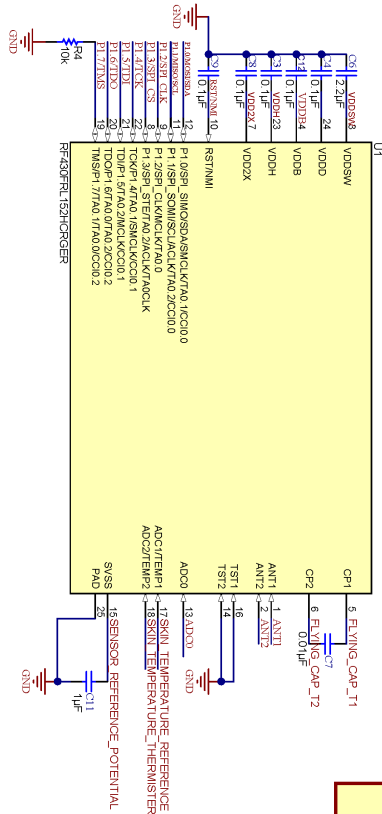
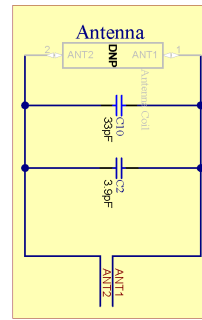
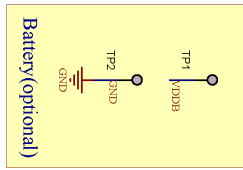


Figure 1. RF430FRL152H NFC Temperature Sensor Schematic

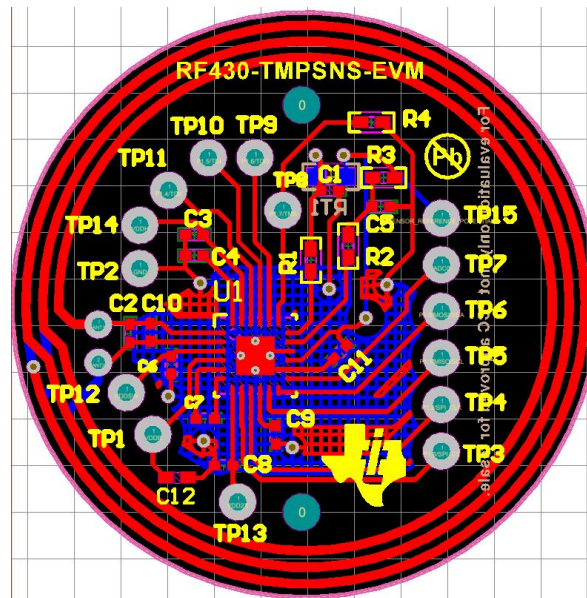


Figure 2. RF430FRL152H NFC Temperature Sensor Board Layout

2 Firmware Implementation

One benefit of this design is that firmware does not need to be programmed into the device. This design utilizes the ROM functions inside of the RF430FRL152H. The device is initialized “over the air” by a NFC/RFID Reader/Writer device that writes the configuration registers. Subsequently, the thermistor measurements are read out by this same Reader/Writer device. When utilizing the graphical user interface (GUI) software as discussed in [Section 3](#), the RF430FRL152H will be configured as shown below. It is important to note that with this specific configuration, each sample requires 128 ms for acquisition. The reference resistor and thermistor must be sampled for each measurement, which brings the total conversion time to 256 ms. This is just one implementation of the ADC configuration register that can be modified to meet the needs of a given application.

- **Sensor Control Register**
The Sensor Control Register is used to select the thermistor to be sampled. The reference resistor (R3) is also sampled and used for Calibration.
 - Reference/ADC1 Sensor enabled
 - Thermistor/ADC2 Sensor enabled
 - Thermistor enabled, number of passes = 1
- **Reference/ADC1 Sensor Configuration Register**
This register is used to configure the ADC1 for the reference resistor. The configuration below sets the ADC for 10-bit resolution and requires 128 ms for each sample. In this application example, 10-bit resolution was used for this for faster conversions.
 - Gain = 2
 - Filter Type = CIC Filter
 - Oversampling = 128
- **Thermistor/ADC2 Sensor Configuration Register**
This register is used to configure the ADC1 for the Thermistor. The configuration below sets the ADC for 10-bit accuracy and requires 128 ms for each sample. In this application example, 10-bit resolution was used for this for faster conversions.
 - Gain = 2
 - Filter Type = CIC Filter
 - Oversampling = 128

NOTE: The configuration of the device can also be read out using the RF430FRL152H GUI “Read All Tabs” button and viewing the tabs that contain the affected registers.

3 Demonstration With TRF7970AEVM

The demonstration board can be exercised with the use of the TRF7970AEVM and the RF430FRL152H GUI. The software and complete details are available in the *RF430FRL152HEVM User's Guide* (SLAU607).

Step-by-step instructions for use with this specific reference design are listed below:

1. Install the RF430FRL152H GUI and drivers as shown in the *Installation of the Software and Drivers* section of the *RF430FRL152HEVM User's Guide* (SLAU607).
2. Plug in the TRF7970AEVM, open the RF430FRL152H GUI, and click “Connect to TRF7970AEVM” (as shown in Figure 3).

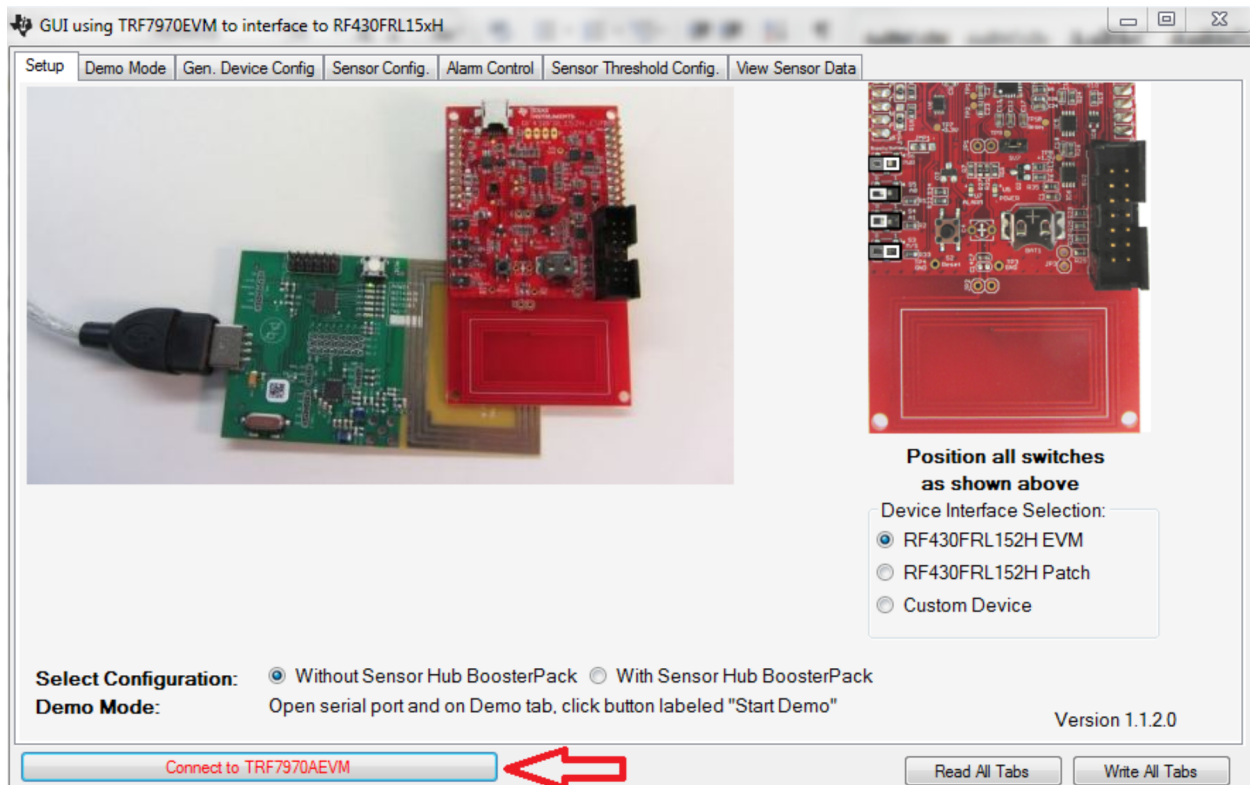


Figure 3. Connect to TRF7970AEVM

3. Select the "RF430FRL152H Patch" and then click the "Demo Mode" tab (as shown in Figure 4).

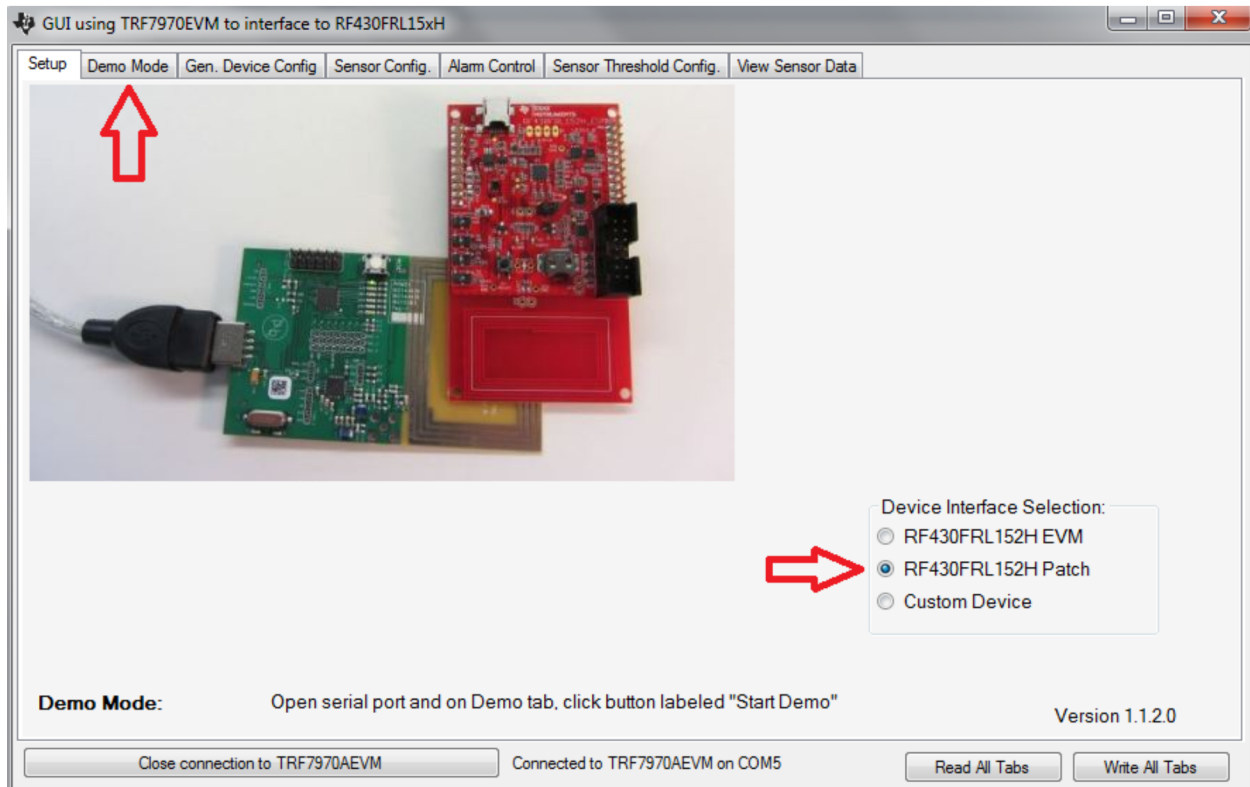


Figure 4. Select RF430FRL152H Patch

- Align the Patch Board in parallel with the TRF7970AEVM antenna and then click “Start Demo” (as shown in [Figure 5](#)). First, this writes the configuration for the ADC and frequency of measurements to the RF430FRL152H. Then, it begins reading the subsequent sensor measurements as they are updated.

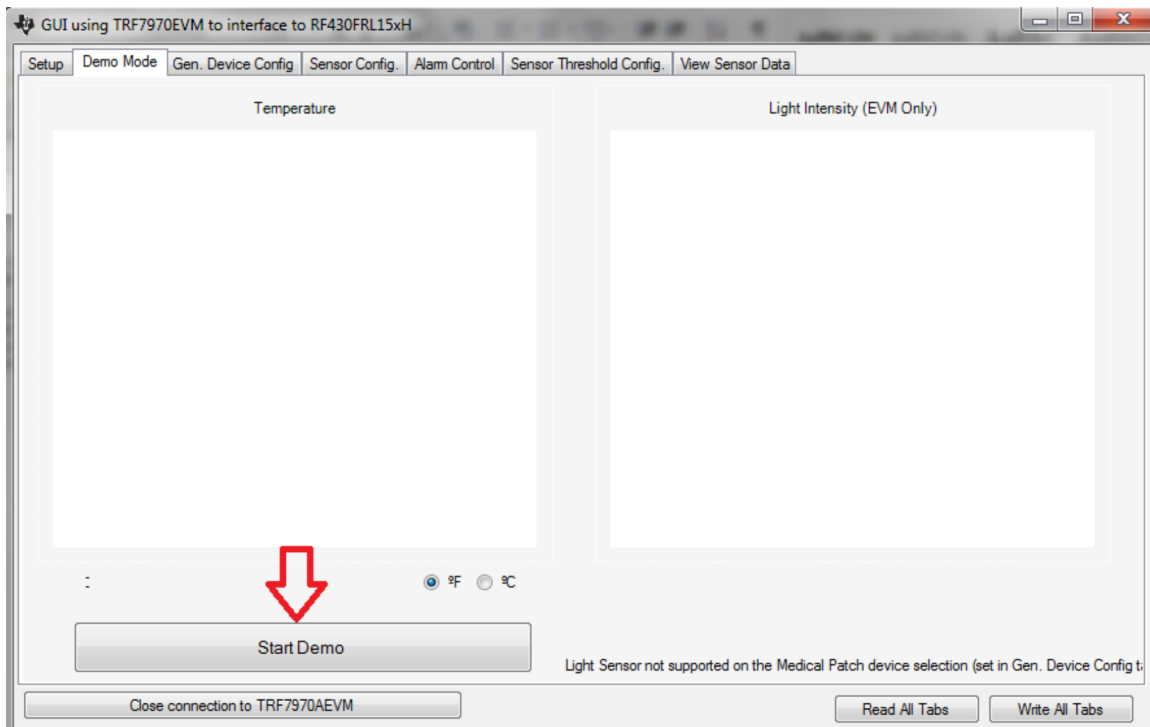


Figure 5. Start Demo

- As long as the patch board stays within range of the TRF7970AEVM antenna, the measurements will continue to be taken and plotted on the graph (as shown in Figure 6). The latest measurement is shown as a numeric value, 78.8°F, in Figure 6. The GUI also provides the option to display in Fahrenheit or Celsius.

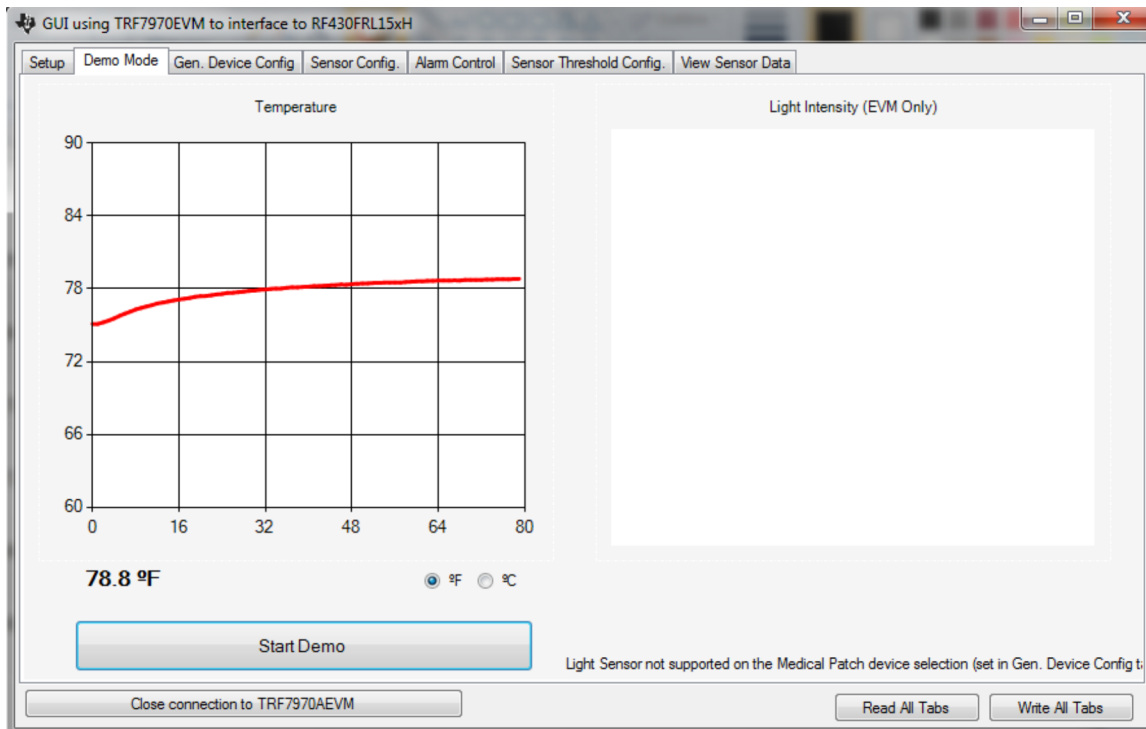


Figure 6. Temperature Measurements

4 Antenna Design

The antenna coil inductance is measured at 1.84 μH as shown in Figure 7. To calculate the parallel tuning capacitors required, the resonant frequency formula in Equation 1 should be used. For further details on antenna tuning, see the *RF430CL330H Practical Antenna Design Guide (SLOA197)*.

$$f_{res} = \frac{1}{2\pi * \sqrt{L * C}} \tag{1}$$

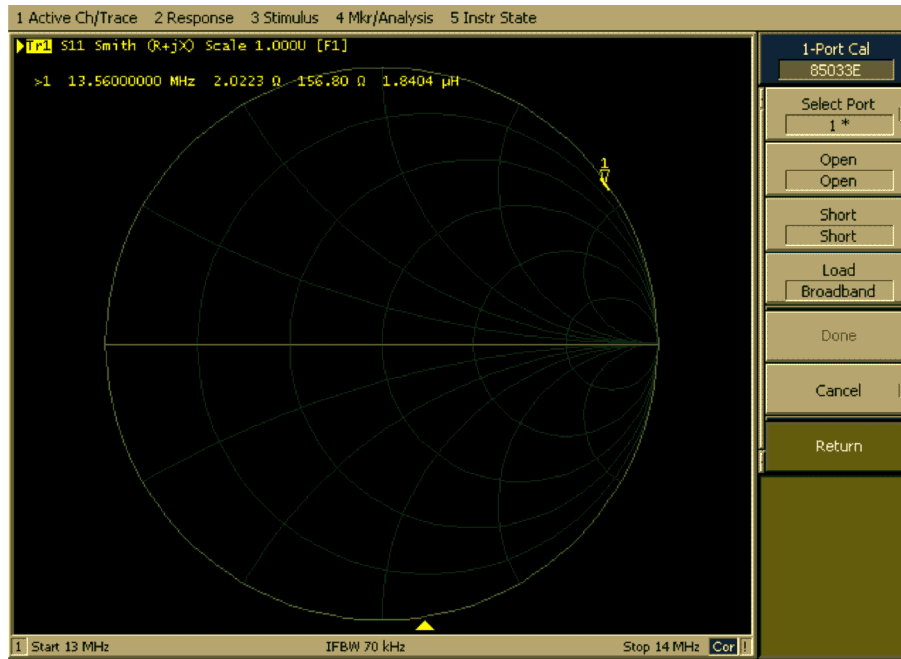


Figure 7. Coil Inductance

Figure 8 shows the measured resonant frequency at 13.66 MHz with 274.3 kHz. This results in a Q factor of less than 50 using the calculation shown in Equation 2. The read range of this reference board is 8cm using the TRF7970AEVM reader.

$$Q = \frac{f_{res}}{BW} \tag{2}$$

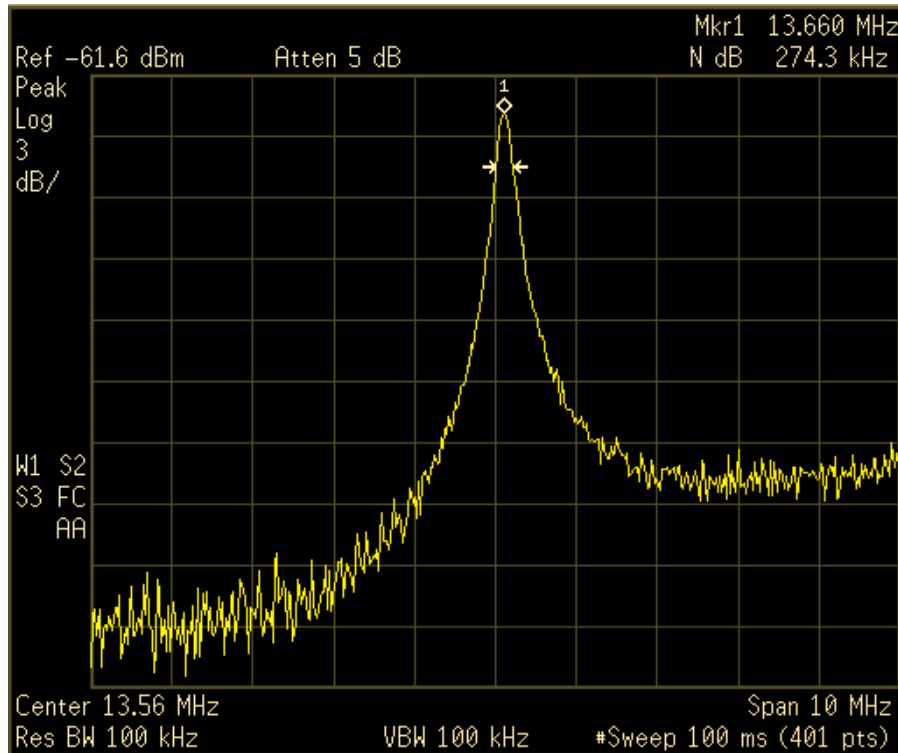


Figure 8. Resonant Frequency

5 References

- *RF430FRL152HEVM User's Guide* ([SLAU607](#))
- *RF430CL330H Practical Antenna Design Guide* ([SLOA197](#))
- *RF430FRL15xH NFC ISO 15693 Sensor Transponder Data Sheet* ([SLAS834](#))
- *RF430FRL15xH Family Technical Reference Manual* ([SLAU506](#))
- RF430FRL152HEVM product folder (www.ti.com/tool/rf430frl152hevm)

Revision History

NOTE: Page numbers for previous revisions may differ from page numbers in the current version.

Changes from December 17, 2014 to February 19, 2016	Page
• Changed figure in abstract	1
• Changed Figure 1 , <i>RF430FRL152H NFC Temperature Sensor Schematic</i>	3
• Changed Figure 2 , <i>RF430FRL152H NFC Temperature Sensor Board Layout</i>	4

IMPORTANT NOTICE FOR TI DESIGN INFORMATION AND RESOURCES

Texas Instruments Incorporated ("TI") technical, application or other design advice, services or information, including, but not limited to, reference designs and materials relating to evaluation modules, (collectively, "TI Resources") are intended to assist designers who are developing applications that incorporate TI products; by downloading, accessing or using any particular TI Resource in any way, you (individually or, if you are acting on behalf of a company, your company) agree to use it solely for this purpose and subject to the terms of this Notice.

TI's provision of TI Resources does not expand or otherwise alter TI's applicable published warranties or warranty disclaimers for TI products, and no additional obligations or liabilities arise from TI providing such TI Resources. TI reserves the right to make corrections, enhancements, improvements and other changes to its TI Resources.

You understand and agree that you remain responsible for using your independent analysis, evaluation and judgment in designing your applications and that you have full and exclusive responsibility to assure the safety of your applications and compliance of your applications (and of all TI products used in or for your applications) with all applicable regulations, laws and other applicable requirements. You represent that, with respect to your applications, you have all the necessary expertise to create and implement safeguards that (1) anticipate dangerous consequences of failures, (2) monitor failures and their consequences, and (3) lessen the likelihood of failures that might cause harm and take appropriate actions. You agree that prior to using or distributing any applications that include TI products, you will thoroughly test such applications and the functionality of such TI products as used in such applications. TI has not conducted any testing other than that specifically described in the published documentation for a particular TI Resource.

You are authorized to use, copy and modify any individual TI Resource only in connection with the development of applications that include the TI product(s) identified in such TI Resource. NO OTHER LICENSE, EXPRESS OR IMPLIED, BY ESTOPPEL OR OTHERWISE TO ANY OTHER TI INTELLECTUAL PROPERTY RIGHT, AND NO LICENSE TO ANY TECHNOLOGY OR INTELLECTUAL PROPERTY RIGHT OF TI OR ANY THIRD PARTY IS GRANTED HEREIN, including but not limited to any patent right, copyright, mask work right, or other intellectual property right relating to any combination, machine, or process in which TI products or services are used. Information regarding or referencing third-party products or services does not constitute a license to use such products or services, or a warranty or endorsement thereof. Use of TI Resources may require a license from a third party under the patents or other intellectual property of the third party, or a license from TI under the patents or other intellectual property of TI.

TI RESOURCES ARE PROVIDED "AS IS" AND WITH ALL FAULTS. TI DISCLAIMS ALL OTHER WARRANTIES OR REPRESENTATIONS, EXPRESS OR IMPLIED, REGARDING TI RESOURCES OR USE THEREOF, INCLUDING BUT NOT LIMITED TO ACCURACY OR COMPLETENESS, TITLE, ANY EPIDEMIC FAILURE WARRANTY AND ANY IMPLIED WARRANTIES OF MERCHANTABILITY, FITNESS FOR A PARTICULAR PURPOSE, AND NON-INFRINGEMENT OF ANY THIRD PARTY INTELLECTUAL PROPERTY RIGHTS.

TI SHALL NOT BE LIABLE FOR AND SHALL NOT DEFEND OR INDEMNIFY YOU AGAINST ANY CLAIM, INCLUDING BUT NOT LIMITED TO ANY INFRINGEMENT CLAIM THAT RELATES TO OR IS BASED ON ANY COMBINATION OF PRODUCTS EVEN IF DESCRIBED IN TI RESOURCES OR OTHERWISE. IN NO EVENT SHALL TI BE LIABLE FOR ANY ACTUAL, DIRECT, SPECIAL, COLLATERAL, INDIRECT, PUNITIVE, INCIDENTAL, CONSEQUENTIAL OR EXEMPLARY DAMAGES IN CONNECTION WITH OR ARISING OUT OF TI RESOURCES OR USE THEREOF, AND REGARDLESS OF WHETHER TI HAS BEEN ADVISED OF THE POSSIBILITY OF SUCH DAMAGES.

You agree to fully indemnify TI and its representatives against any damages, costs, losses, and/or liabilities arising out of your non-compliance with the terms and provisions of this Notice.

This Notice applies to TI Resources. Additional terms apply to the use and purchase of certain types of materials, TI products and services. These include; without limitation, TI's standard terms for semiconductor products (<http://www.ti.com/sc/docs/stdterms.htm>), [evaluation modules](#), and [samples](http://www.ti.com/sc/docs/sampterm.htm) (<http://www.ti.com/sc/docs/sampterm.htm>).

Mailing Address: Texas Instruments, Post Office Box 655303, Dallas, Texas 75265
Copyright © 2018, Texas Instruments Incorporated