

How to Terminate LVDS Connections

Yaser Ibrahim, High-Speed Data and Clocks Group



This document discusses termination and biasing schemes for LVDS drivers and receivers with DC and AC coupling configurations. It also shows termination schemes for multidrop and multipoint (M-LVDS) connections.

DC Coupling Configuration

Connecting an LVDS driver, such as DS90LV011A, DS90LV027A, or DS90LV047A, to an LVDS receiver, such as DS90LV012A, DS90LV028A, or DS90LV048A, is fairly simple and only requires a 100- Ω differential termination resistor across the input terminal pair of the receiver as shown in Figure 1. This termination resistor, which should be placed as close to the receiver as possible, is needed to generate the differential voltage across the receiver inputs, and to match the transmission line impedance to reduce reflections. Some LVDS receivers have integrated 100- Ω termination resistors, such as DS90LT012A, SN65LVDT34, or SN65LVDT32B. An external termination should not be used when using such a receiver.

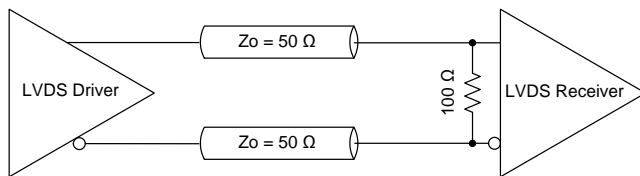


Figure 1. LVDS Connection with DC Coupling

An alternative termination scheme is shown in Figure 2, which has a split termination and a capacitor from the center tap to ground. The capacitor filters common-mode noise and helps with transmission line skew (which could be due to differential lines mismatch or driver output skew). The value of the capacitors depends on the operating frequency, as it needs to look like a short circuit for the AC component of the signal. A capacitor value of 0.1 μF should be adequate for most high data rates (1 Mbps and above).

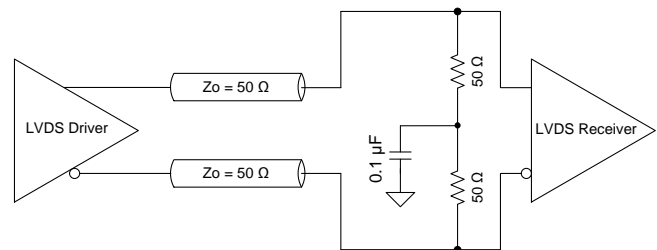


Figure 2. Alternative LVDS Connection with DC Coupling

AC Coupling Configuration

Figure 3 shows the termination in the case of AC-coupled configuration. Note that for AC coupling the data transmitted needs to be DC-balanced (for example, using 8b/10b encoding). In Figure 3, the resistor network at the input of the receiver restores the DC common mode to 1.2 V (assuming $V_{CC} = 3.3$ V) which is in the middle of the input common mode range for a standard LVDS receiver. Additionally, the resistor network provides the 100- Ω termination at the input of the receiver. If a termination resistor is integrated into the LVDS receiver, then larger resistor values should be selected in order not to alter the effective termination resistance at the input of the receiver. Suggested values are 10 k Ω for the pull up and 5.7 k Ω for the pull down. The value of AC coupling capacitors depends on the operating frequency, as it needs to block the DC component, but look like a short circuit for the AC component. A capacitor value of 0.1 μF should be adequate for high data rates (1 Mbps and above).

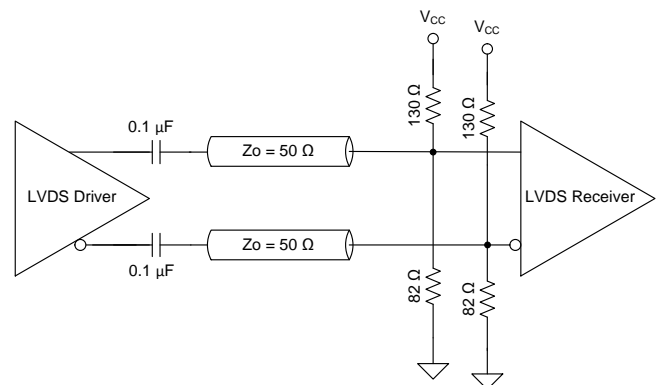


Figure 3. LVDS Connection with AC Coupling

An alternative circuit is shown in Figure 4 which uses a split termination and a capacitor, in addition to a biasing resistor network. The capacitor filters common-mode noise and helps with transmission line skew. Another advantage of this circuit is lower power consumption when compared to the circuit in Figure 3.

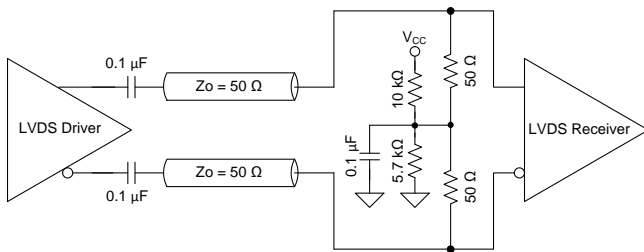


Figure 4. Alternative LVDS Connection with AC Coupling

Another variation on the circuit in Figure 3 is shown in Figure 5. It uses only one pair of resistors to provide the biasing on the negative input terminal. The positive input terminal will also get the common mode voltage through the 100-Ω termination. The advantage of this method is reduced component count. The disadvantage is that there is some differential skew between the positive and negative input terminals.

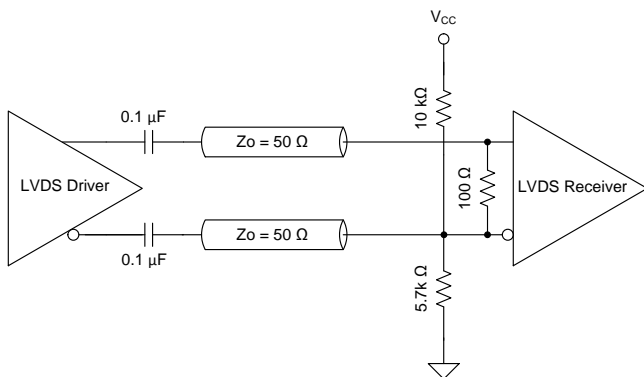


Figure 5. AC-Coupled LVDS Connection with Reduced Component Count

When using an LVDS receiver with a wide common mode range, such as SN65LVDS33, SN65LVDS34, SN65LVDS348, and SN65LVDS352, which have an input common mode range from -4V to 5V, a common mode biasing resistor network is not needed. Only the 100-Ω termination is needed, as shown in Figure 6.

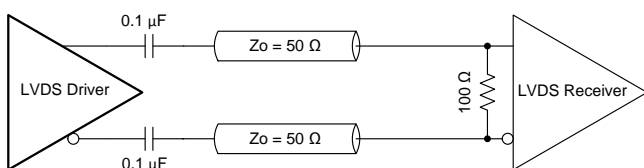


Figure 6. AC-Coupled LVDS Connection When Using Wide Common Mode LVDS Receiver

Multidrop LVDS Termination

When using LVDS transceivers in a multidrop configuration, only one termination is needed which is placed at the input terminals of the farthest receiver as shown in Figure 7.

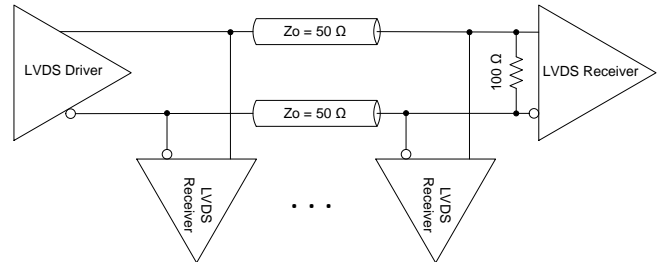


Figure 7. Multidrop LVDS Termination

M-LVDS Termination

When using M-LVDS transceivers, such as SN65MLVD206B, SN65MLVD204B, or SN65MLVD040, in a half duplex multipoint configuration, termination is needed on both ends of the bus as shown in Figure 8. It is not necessary to place the termination close the receivers, rather at the farthest points of both ends of the bus.

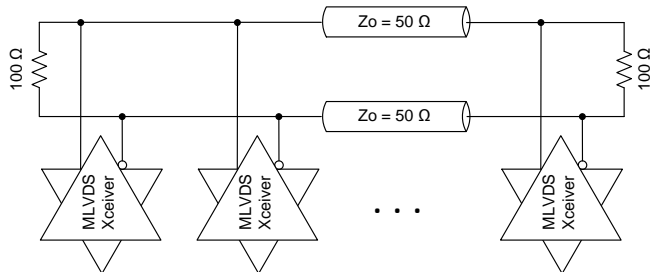


Figure 8. Half Duplex M-LVDS Termination

If using full duplex M-LVDS transceivers, such as SN65MLVD205A or SN65MLVD207, then two differential pairs are utilized, and each of them needs two terminations on both ends of the connection as shown in Figure 9.

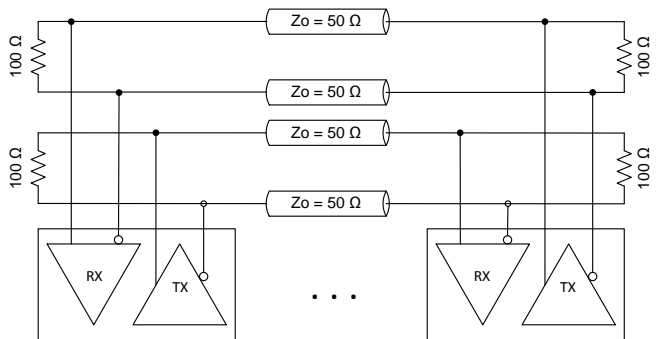


Figure 9. Full Duplex M-LVDS Termination

IMPORTANT NOTICE FOR TI DESIGN INFORMATION AND RESOURCES

Texas Instruments Incorporated ("TI") technical, application or other design advice, services or information, including, but not limited to, reference designs and materials relating to evaluation modules, (collectively, "TI Resources") are intended to assist designers who are developing applications that incorporate TI products; by downloading, accessing or using any particular TI Resource in any way, you (individually or, if you are acting on behalf of a company, your company) agree to use it solely for this purpose and subject to the terms of this Notice.

TI's provision of TI Resources does not expand or otherwise alter TI's applicable published warranties or warranty disclaimers for TI products, and no additional obligations or liabilities arise from TI providing such TI Resources. TI reserves the right to make corrections, enhancements, improvements and other changes to its TI Resources.

You understand and agree that you remain responsible for using your independent analysis, evaluation and judgment in designing your applications and that you have full and exclusive responsibility to assure the safety of your applications and compliance of your applications (and of all TI products used in or for your applications) with all applicable regulations, laws and other applicable requirements. You represent that, with respect to your applications, you have all the necessary expertise to create and implement safeguards that (1) anticipate dangerous consequences of failures, (2) monitor failures and their consequences, and (3) lessen the likelihood of failures that might cause harm and take appropriate actions. You agree that prior to using or distributing any applications that include TI products, you will thoroughly test such applications and the functionality of such TI products as used in such applications. TI has not conducted any testing other than that specifically described in the published documentation for a particular TI Resource.

You are authorized to use, copy and modify any individual TI Resource only in connection with the development of applications that include the TI product(s) identified in such TI Resource. NO OTHER LICENSE, EXPRESS OR IMPLIED, BY ESTOPPEL OR OTHERWISE TO ANY OTHER TI INTELLECTUAL PROPERTY RIGHT, AND NO LICENSE TO ANY TECHNOLOGY OR INTELLECTUAL PROPERTY RIGHT OF TI OR ANY THIRD PARTY IS GRANTED HEREIN, including but not limited to any patent right, copyright, mask work right, or other intellectual property right relating to any combination, machine, or process in which TI products or services are used. Information regarding or referencing third-party products or services does not constitute a license to use such products or services, or a warranty or endorsement thereof. Use of TI Resources may require a license from a third party under the patents or other intellectual property of the third party, or a license from TI under the patents or other intellectual property of TI.

TI RESOURCES ARE PROVIDED "AS IS" AND WITH ALL FAULTS. TI DISCLAIMS ALL OTHER WARRANTIES OR REPRESENTATIONS, EXPRESS OR IMPLIED, REGARDING TI RESOURCES OR USE THEREOF, INCLUDING BUT NOT LIMITED TO ACCURACY OR COMPLETENESS, TITLE, ANY EPIDEMIC FAILURE WARRANTY AND ANY IMPLIED WARRANTIES OF MERCHANTABILITY, FITNESS FOR A PARTICULAR PURPOSE, AND NON-INFRINGEMENT OF ANY THIRD PARTY INTELLECTUAL PROPERTY RIGHTS.

TI SHALL NOT BE LIABLE FOR AND SHALL NOT DEFEND OR INDEMNIFY YOU AGAINST ANY CLAIM, INCLUDING BUT NOT LIMITED TO ANY INFRINGEMENT CLAIM THAT RELATES TO OR IS BASED ON ANY COMBINATION OF PRODUCTS EVEN IF DESCRIBED IN TI RESOURCES OR OTHERWISE. IN NO EVENT SHALL TI BE LIABLE FOR ANY ACTUAL, DIRECT, SPECIAL, COLLATERAL, INDIRECT, PUNITIVE, INCIDENTAL, CONSEQUENTIAL OR EXEMPLARY DAMAGES IN CONNECTION WITH OR ARISING OUT OF TI RESOURCES OR USE THEREOF, AND REGARDLESS OF WHETHER TI HAS BEEN ADVISED OF THE POSSIBILITY OF SUCH DAMAGES.

You agree to fully indemnify TI and its representatives against any damages, costs, losses, and/or liabilities arising out of your non-compliance with the terms and provisions of this Notice.

This Notice applies to TI Resources. Additional terms apply to the use and purchase of certain types of materials, TI products and services. These include; without limitation, TI's standard terms for semiconductor products (<http://www.ti.com/sc/docs/stdterms.htm>), [evaluation modules](#), and [samples](http://www.ti.com/sc/docs/sampterm.htm) (<http://www.ti.com/sc/docs/sampterm.htm>).

Mailing Address: Texas Instruments, Post Office Box 655303, Dallas, Texas 75265
Copyright © 2018, Texas Instruments Incorporated