

Understanding Schmitt Triggers

Chris Cockrill

Most CMOS, BiCMOS and TTL devices require fairly fast edges on the high and low transitions on their inputs. If the edges are too slow they can cause excessive current, oscillation and even damage the device. Slow edges are sometimes hard to avoid at power up or when using push button or manual type switches with the large capacitors needed for filtering. Heavily loaded outputs can also cause input rise and fall time to be out of spec for the next part down the line.

On a normal (non-Schmitt trigger) input the part will switch at the same point on the rising edge and falling edge. With a slow rising edge the part will switch at the threshold. When the switch occurs it will require current from V_{CC} . When current is forced from V_{CC} , the V_{CC} level can drop causing the threshold to shift. When the threshold shifts it will cross the input again causing the part to switch again. This can go on and on causing oscillation which can cause excessive current. The same thing can happen if there is noise on the input. The noise can cross the threshold multiple times and cause oscillation or multiple clocking.

The solution to these problems is to use a Schmitt trigger type device to translate the slow or noisy edges into something faster that will meet the input rise and fall specs of the following device. A true Schmitt trigger input will not have rise and fall time limitations.

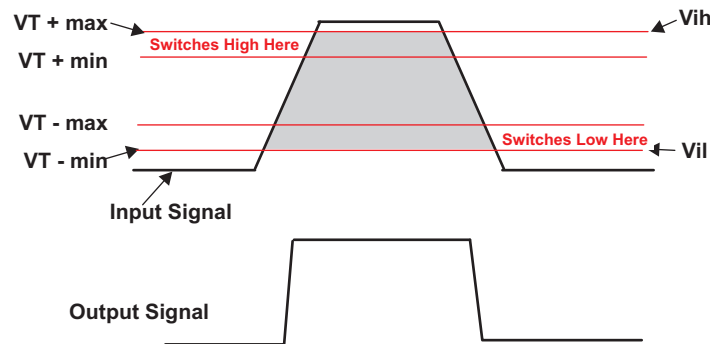
There are parts that have Schmitt trigger action. This means that they will have a small amount of hysteresis that will help with noise rejection but will still have an input rise and fall time limit. These will usually not have any V_T specs in the datasheet and will have rise and fall time limitations specified for the inputs in the recommended operating conditions.

The true Schmitt trigger input has the switching threshold adjusted where the part will switch at a higher point (V_{T+}) on the rising edge and at a lower point (V_{T-}) on the falling edge. The difference in these switching points is called Hysteresis (ΔV_T). Here is an example of Schmitt trigger specs.

PARAMETER	V_{CC}	MIN	MAX	UNIT
V_{T+} (Positive-going input threshold voltage)	1.65 V	0.76	1.13	V
	2.3 V	1.08	1.56	
	3 V	1.48	1.92	
	4.5 V	2.19	2.74	
	5.5 V	2.65	3.33	
V_{T-} (Negative-going input threshold voltage)	1.65 V	0.35	0.59	V
	2.3 V	0.56	0.88	
	3 V	0.89	1.2	
	4.5 V	1.51	1.97	
	5.5 V	1.88	2.4	
ΔV_T Hysteresis ($V_{T+} - V_{T-}$)	1.65 V	0.36	0.64	V
	2.3 V	0.45	0.78	
	3 V	0.51	0.83	
	4.5 V	0.58	0.93	
	5.5 V	0.69	1.04	

The important thing to remember here is that $(V_{t+ \max}) = V_{ih}$ and $(V_{t- \min}) = V_{il}$.

In the specs you will see multiple limits related to the Schmitt trigger inputs. All of the limits are important for different reasons. On the input rising edge the part will be guaranteed to switch between $(V_{t+ \min})$ and $(V_{t+ \max})$. On the falling edge the part will be guaranteed to switch between $(V_{t- \max})$ and $(V_{t- \min})$. The part is guaranteed not to switch between $(V_{t- \max})$ and $(V_{t+ \min})$. This is important for noise rejection. The hysteresis is the delta between where the part switches on the rising edge and where it switches on the falling edge. We specify this hysteresis will be at least the min and no more than the max (ΔV_t) spec.



In the figure above, the input levels V_{ih} and V_{il} must be greater than $(V_{t+ \max})$ and less than $(V_{t- \min})$ to insure the part will switch. The switching points on the plot above are separated to give a clearer visual picture. In reality the $(V_{t+ \min})$ and $(V_{t- \max})$ may overlap.

One common misconception is that the current consumption will be less when switching a slow signal into a Schmitt trigger. This is partly true because the Schmitt trigger prevents oscillation which can draw a lot of current; however you will still see higher I_{CC} current due to the amount of time the input is not at the rail. This is ΔI_{CC} . ΔI_{CC} is where the inputs are not at the rails and upper or lower drive transistors are partially on. The plot below shows I_{CC} across the input voltage sweep.

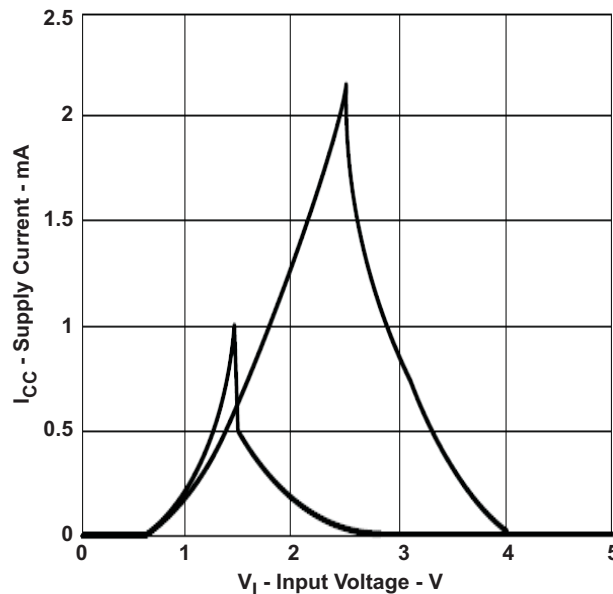


Figure 1. Supply Current as a Function of Input Voltage

Schmitt triggers should be used anytime you need to translate a sine wave into a square wave as shown in this oscillator application. Or they should be used where a slow or noisy input needs to be sped up or cleaned up as in the switch de-bouncer circuit.

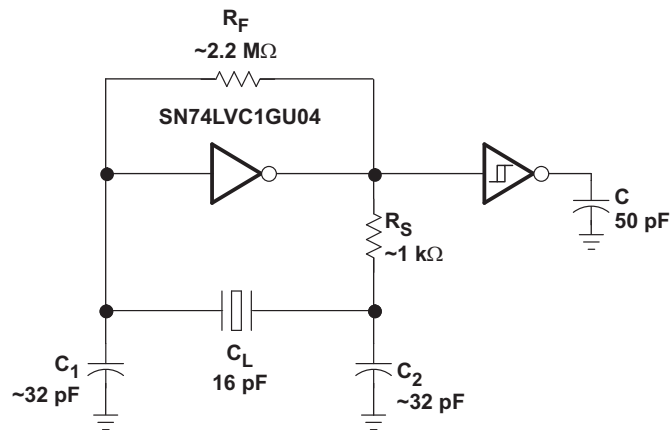


Figure 2. Oscillator Application Using Schmitt Trigger Inverter

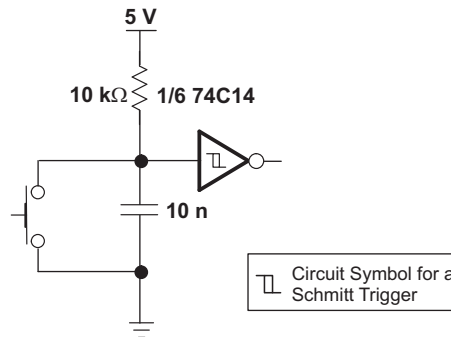
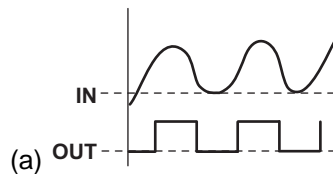


Figure 3. Switch De-bouncer Using Schmitt Trigger Inverter

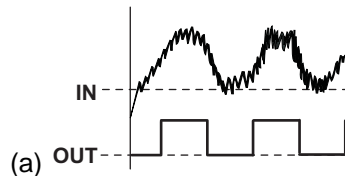
Conclusion

Schmitt triggers should be used any time you need to

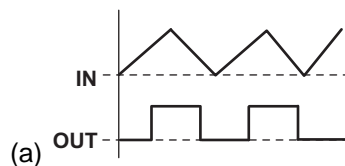
1. Change a sine wave into a square wave.



2. Have noisy signals that need to be cleaned up



3. Have slow edges that need to be converted to fast edges.



We specify the part will switch on the rising edge between ($V_{T+ \text{ min}}$) and ($V_{T+ \text{ max}}$).

We specify the part will switch on the falling edge between ($V_{T- \text{ max}}$) and ($V_{T- \text{ min}}$).

Between ($V_{T+ \text{ min}}$) and ($V_{T- \text{ max}}$) we assure the part will not switch. This can be used for noise rejection. These 2 limits can overlap.

We assure there will be a minimum amount of hysteresis. This is specified as $\Delta V_T \text{ min}$.

$$V_{ih} = (V_{T+ \text{ max}})$$

$$V_{il} = (V_{T- \text{ min}})$$

Texas Instrument Schmitt trigger functions are available in most all technology families from the 30 year old 74XX family to the latest AUP1T family. These two Schmitt Trigger functions are available in most all families.

14 for inverting Schmitt trigger

17 for non-inverting Schmitt trigger

Texas Instrument also has a complete line of little logic products with Schmitt trigger inputs.

Configurations

SN74LVC1G57, SN74LVC1G58, SN74LVC1G97, SN74LVC1G98, SN74LVC1G99 SN74AUP1G57, SN74AUP1G58, SN74AUP1G97, SN74AUP1G98, SN74AUP1G99

Low to High Translators

SN74AUP1T02, SN74AUP1T04, SN74AUP1T08, SN74AUP1T14, SN74AUP1T157, SN74AUP1T158, SN74AUP1T17, SN74AUP1T32, SN74AUP1T86

IMPORTANT NOTICE

Texas Instruments Incorporated and its subsidiaries (TI) reserve the right to make corrections, enhancements, improvements and other changes to its semiconductor products and services per JESD46, latest issue, and to discontinue any product or service per JESD48, latest issue. Buyers should obtain the latest relevant information before placing orders and should verify that such information is current and complete. All semiconductor products (also referred to herein as "components") are sold subject to TI's terms and conditions of sale supplied at the time of order acknowledgment.

TI warrants performance of its components to the specifications applicable at the time of sale, in accordance with the warranty in TI's terms and conditions of sale of semiconductor products. Testing and other quality control techniques are used to the extent TI deems necessary to support this warranty. Except where mandated by applicable law, testing of all parameters of each component is not necessarily performed.

TI assumes no liability for applications assistance or the design of Buyers' products. Buyers are responsible for their products and applications using TI components. To minimize the risks associated with Buyers' products and applications, Buyers should provide adequate design and operating safeguards.

TI does not warrant or represent that any license, either express or implied, is granted under any patent right, copyright, mask work right, or other intellectual property right relating to any combination, machine, or process in which TI components or services are used. Information published by TI regarding third-party products or services does not constitute a license to use such products or services or a warranty or endorsement thereof. Use of such information may require a license from a third party under the patents or other intellectual property of the third party, or a license from TI under the patents or other intellectual property of TI.

Reproduction of significant portions of TI information in TI data books or data sheets is permissible only if reproduction is without alteration and is accompanied by all associated warranties, conditions, limitations, and notices. TI is not responsible or liable for such altered documentation. Information of third parties may be subject to additional restrictions.

Resale of TI components or services with statements different from or beyond the parameters stated by TI for that component or service voids all express and any implied warranties for the associated TI component or service and is an unfair and deceptive business practice. TI is not responsible or liable for any such statements.

Buyer acknowledges and agrees that it is solely responsible for compliance with all legal, regulatory and safety-related requirements concerning its products, and any use of TI components in its applications, notwithstanding any applications-related information or support that may be provided by TI. Buyer represents and agrees that it has all the necessary expertise to create and implement safeguards which anticipate dangerous consequences of failures, monitor failures and their consequences, lessen the likelihood of failures that might cause harm and take appropriate remedial actions. Buyer will fully indemnify TI and its representatives against any damages arising out of the use of any TI components in safety-critical applications.

In some cases, TI components may be promoted specifically to facilitate safety-related applications. With such components, TI's goal is to help enable customers to design and create their own end-product solutions that meet applicable functional safety standards and requirements. Nonetheless, such components are subject to these terms.

No TI components are authorized for use in FDA Class III (or similar life-critical medical equipment) unless authorized officers of the parties have executed a special agreement specifically governing such use.

Only those TI components which TI has specifically designated as military grade or "enhanced plastic" are designed and intended for use in military/aerospace applications or environments. Buyer acknowledges and agrees that any military or aerospace use of TI components which have **not** been so designated is solely at the Buyer's risk, and that Buyer is solely responsible for compliance with all legal and regulatory requirements in connection with such use.

TI has specifically designated certain components as meeting ISO/TS16949 requirements, mainly for automotive use. In any case of use of non-designated products, TI will not be responsible for any failure to meet ISO/TS16949.

Products

Audio	www.ti.com/audio
Amplifiers	amplifier.ti.com
Data Converters	dataconverter.ti.com
DLP® Products	www.dlp.com
DSP	dsp.ti.com
Clocks and Timers	www.ti.com/clocks
Interface	interface.ti.com
Logic	logic.ti.com
Power Mgmt	power.ti.com
Microcontrollers	microcontroller.ti.com
RFID	www.ti-rfid.com
OMAP Applications Processors	www.ti.com/omap
Wireless Connectivity	www.ti.com/wirelessconnectivity

Applications

Automotive and Transportation	www.ti.com/automotive
Communications and Telecom	www.ti.com/communications
Computers and Peripherals	www.ti.com/computers
Consumer Electronics	www.ti.com/consumer-apps
Energy and Lighting	www.ti.com/energy
Industrial	www.ti.com/industrial
Medical	www.ti.com/medical
Security	www.ti.com/security
Space, Avionics and Defense	www.ti.com/space-avionics-defense
Video and Imaging	www.ti.com/video

TI E2E Community

e2e.ti.com