

Communicating With the RFID Base Station

Stefan Recknagel

ABSTRACT

This document describes the USB RFID base station that is delivered with the [eZ430-TMS37157](#) demo tool. It does not describe the GUI that is delivered with the tool [for a description of the GUI and other information about the tool, see the *eZ430-TMS37157 Development Tool User's Guide* ([SLAU281](#))]. This application report helps the reader design a custom Windows GUI to control the RFID base station. The RFID base station is capable of communicating with all Digital Signature Transponder (DST) compliant Texas Instruments transponders.

Contents

1	Introduction	2
2	Communication Protocol Between Host PC and Base Station	3
3	Summary	5
4	References	5

List of Figures

1	Com Port Settings for the USB Base Station	2
2	Downlink Protocol Structure	3
3	Command Byte 1	3
4	Command Byte 2	4
5	Uplink Protocol Structure.....	4

List of Tables

1	PWM Timings for Downlink Protocol	2
2	PPM Timings for Downlink Protocol	2
3	Downlink Protocol Bytes	3
4	Command Byte 1 Description	3
5	Command Byte 2 Description	4
6	Uplink Protocol Bytes.....	5

1 Introduction

The base station implements a USB to serial converter that emulates a COM port in Windows. [Figure 1](#) shows the COM port settings that are necessary for communication with the base station.

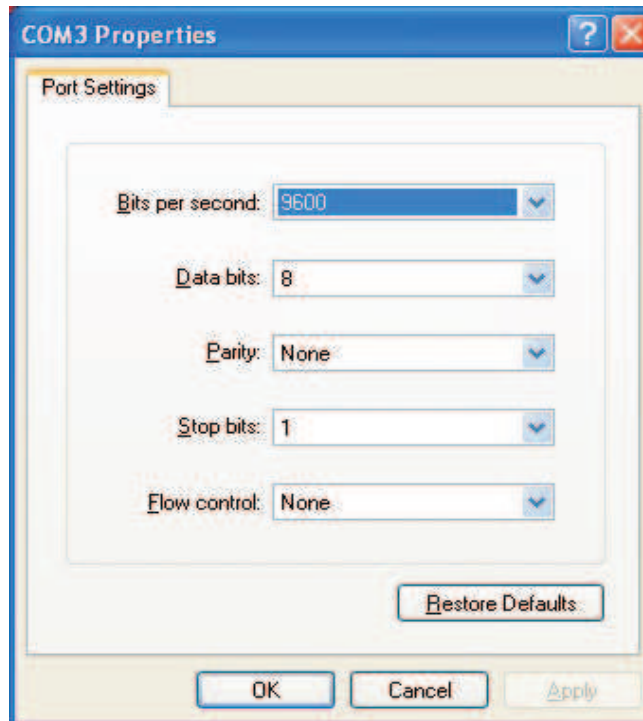


Figure 1. Com Port Settings for the USB Base Station

Upon receipt of a transponder command, the base station sends the command to an RFID transponder and also receives the answer if a transponder is in range. The downlink modulation [Pulse Width Modulation (PWM) or Pulse Position Modulation (PPM)] and the decoding of the transponder response [frequency shift keying (FSK) modulated] are handled in the base station.

The base station is capable of using PWM or PPM for the downlink protocol; the timings are predefined in the base station and cannot be changed (see [Table 1](#) and [Table 2](#)). The user does not need to know these timings for communication with the base station; these are provided for information only.

Table 1. PWM Timings for Downlink Protocol

SYMBOL	TIME	NODE
Toff low bit	170 μ s	Transmitter off time for a low bit
Ton low bit	330 μ s	Transmitter on time for a low bit
Toff high bit	480 μ s	Transmitter off time for a high bit
Ton high	520 μ s	Transmitter on time for a high bit

Table 2. PPM Timings for Downlink Protocol

SYMBOL	TIME	NODE
Toff low bit	170 μ s	Transmitter off time for a low bit
Ton low bit	230 μ s	Transmitter on time for a low bit
Toff high bit	170 μ s	Transmitter off time for a high bit
Ton high	350 μ s	Transmitter on time for a high bit

2 Communication Protocol Between Host PC and Base Station

2.1 Downlink Protocol from Host PC to Base station

The downlink protocol to initiate a transponder command is shown in [Figure 2](#). The base station immediately sends the corresponding command to the RFID transponder and sends a response back to the host PC, regardless of whether or not a transponder was in range.

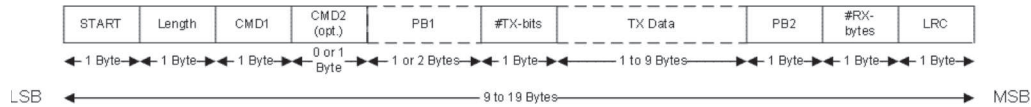


Figure 2. Downlink Protocol Structure

Table 3. Downlink Protocol Bytes

BYTE	NODE
Start	Start byte indicating a new command = 0x01
Length	Length of the whole command (bytes) excluding start byte, length and LRC
CMD1	Command byte 1
CMD2	Command byte 2 (optional)
PB1	Length of power burst 1 in ms – charge time to charge the VCL capacitor, can be extended to 2 bytes
#TX-bits	Number of bits transmitted to the transponder
TX Data	Data transmitted to the transponder
PB2	Length of power burst 2 in ms, needed for a programming or MSP access command
#RX-bytes	Number of bytes which the transponder will send back, usually 0x0A – 10 bytes (TMS37157)
LRC	Redundancy check over the data sent to the base station, excluding start byte

The structure of command byte 1 is shown in [Figure 3](#), and its bits are explained in [Table 4](#).

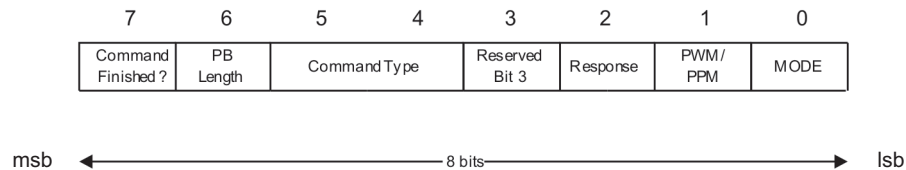


Figure 3. Command Byte 1

Table 4. Command Byte 1 Description

COMMAND FINISHED?	Bit 7	Indicates if one additional command byte is following 0 No command byte is following 1 Command byte is following
PB LENGTH	Bit 6	Length of PB1 is one or two bytes 0 PB1 is one byte 1 PB1 is two bytes
COMMAND TYPE	Bits 5 - 4	Low-frequency command type 00 Standard transponder commands (default) 01 Reserved 10 Reserved 11 Reserved
RESERVED	Bit 3	Reserved 0 Default

Table 4. Command Byte 1 Description (continued)

RESPONSE	Bit 2	Determines which response can be expected 0 Reserved 1 LF response (default)
PWM/PPM	Bit 1	Chooses which modulation is used for LF downlink protocol 0 PWM modulation is used 1 PPM modulation is used
MODE	Bit 0	Chooses between transponder mode or setup mode 0 Transponder mode (default) 1 Reserved

If bit 7 of command byte 1 is set, command byte 2 must follow. The majority of bits in command byte 2 are reserved. Command byte 2 is needed only for a battery charge command, if the magnetic field must stay on after power burst 2 and no response is expected. The structure of command byte 2 is shown in Figure 4 and its bits are explained in Table 5.

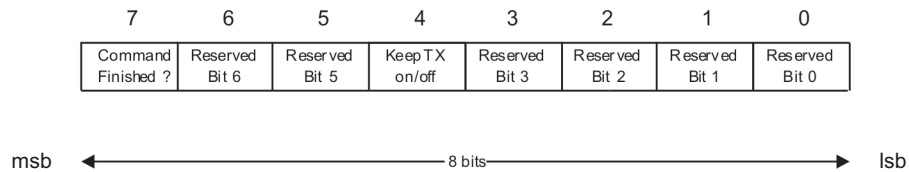


Figure 4. Command Byte 2

Table 5. Command Byte 2 Description

COMMAND FINISHED?	Bit 7	Indicates if one additional command byte follows 0 No command byte follows (default) 1 Command byte follows
RESERVED	Bit 6 - 5	Reserved 00 Default
KEEP TX ON/OFF	Bit 4	Chooses if the magnetic field (TX) should stay on after PB2 (for battery charge) 0 Turn TX off after PB2 1 Keep TX on after PB2 (no response)
RESERVED	Bits 3 - 0	Reserved 0000 Default

2.2 Uplink Protocol from Base Station to Host PC

The uplink protocol for the communication from the base station to the host PC is similar to the downlink protocol. The transponder answer is usually 12 bytes (TMS37157), the base station automatically deletes the 2-byte pre-bit phase; the first transponder data is then the start byte (0x7E for the TMS37157). This results in a length of 10 bytes for transponder data. The length of the uplink protocol is always 14 bytes for standard transponder commands. Figure 5 shows the structure of the uplink protocol, and its bytes are described in Table 6.

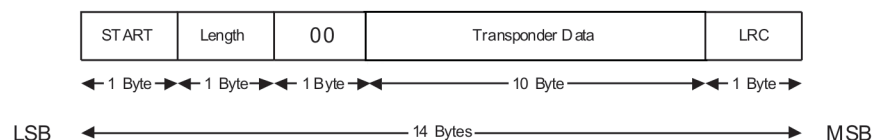


Figure 5. Uplink Protocol Structure

Table 6. Uplink Protocol Bytes

BYTE	NODE
Start	Start byte indicating an new command 0x01 (by default)
Length	Length of the whole command (bytes) excluding start byte, length and LRC, usually 0x0B – 11 bytes (TMS37157)
00	Reserved. 0x00 (default).
Transponder data	Response of the transponder begins usually with 0x7E (TMS37157)
LRC	Redundancy check over the data sent to the base station, excluding Start byte

If no transponder is in range or a battery charge command was performed, the base station responds by setting the whole transponder data (10 bytes) to 0x0.

2.3 How to Calculate the Longitudinal Redundancy Check (LRC)

The base station calculates the LRC over all bytes of the incoming and outgoing data excluding the start byte. The LRC byte is calculated by performing a XOR over the bytes. The user has to calculate the LRC over the data he sends to the base station and add it to the send string. The LRC is always the last byte of the outgoing or incoming data. The user can calculate the LRC over the received data and compare it with the received LRC for error detection.

The source code below shows a calculation routine for the LRC. It returns the LRC as a byte value.

```

public byte LRC_calc(byte[] bytes, int length)
{
    int lrc;

    lrc = bytes[0];

    for (int i = 1; i < length; i++)
    {
        lrc = lrc ^ bytes[i];
    }

    return (byte) (lrc);
}

```

3 Summary

This application report provides the user of the RFID base station the possibility of writing a custom GUI for communicating with the RFID base station. In conjunction with the TMS37157 PaLFI data sheet, the user can create custom transponder commands that extend the capabilities of the RFID demo software delivered with the eZ430-TMS37157 demo tool.

4 References

1. *TMS37157 Passive Low-Frequency Interface (PaLFI) Device With EEPROM and 134.2-kHz Transponder data sheet* ([SWRS083](#))
2. *eZ430-TMS37157 Development Tool User's Guide* ([SLAU281](#))
3. *Low-Frequency RFID in a Nutshell* ([SWRA284](#))

IMPORTANT NOTICE

Texas Instruments Incorporated and its subsidiaries (TI) reserve the right to make corrections, modifications, enhancements, improvements, and other changes to its products and services at any time and to discontinue any product or service without notice. Customers should obtain the latest relevant information before placing orders and should verify that such information is current and complete. All products are sold subject to TI's terms and conditions of sale supplied at the time of order acknowledgment.

TI warrants performance of its hardware products to the specifications applicable at the time of sale in accordance with TI's standard warranty. Testing and other quality control techniques are used to the extent TI deems necessary to support this warranty. Except where mandated by government requirements, testing of all parameters of each product is not necessarily performed.

TI assumes no liability for applications assistance or customer product design. Customers are responsible for their products and applications using TI components. To minimize the risks associated with customer products and applications, customers should provide adequate design and operating safeguards.

TI does not warrant or represent that any license, either express or implied, is granted under any TI patent right, copyright, mask work right, or other TI intellectual property right relating to any combination, machine, or process in which TI products or services are used. Information published by TI regarding third-party products or services does not constitute a license from TI to use such products or services or a warranty or endorsement thereof. Use of such information may require a license from a third party under the patents or other intellectual property of the third party, or a license from TI under the patents or other intellectual property of TI.

Reproduction of TI information in TI data books or data sheets is permissible only if reproduction is without alteration and is accompanied by all associated warranties, conditions, limitations, and notices. Reproduction of this information with alteration is an unfair and deceptive business practice. TI is not responsible or liable for such altered documentation. Information of third parties may be subject to additional restrictions.

Resale of TI products or services with statements different from or beyond the parameters stated by TI for that product or service voids all express and any implied warranties for the associated TI product or service and is an unfair and deceptive business practice. TI is not responsible or liable for any such statements.

TI products are not authorized for use in safety-critical applications (such as life support) where a failure of the TI product would reasonably be expected to cause severe personal injury or death, unless officers of the parties have executed an agreement specifically governing such use. Buyers represent that they have all necessary expertise in the safety and regulatory ramifications of their applications, and acknowledge and agree that they are solely responsible for all legal, regulatory and safety-related requirements concerning their products and any use of TI products in such safety-critical applications, notwithstanding any applications-related information or support that may be provided by TI. Further, Buyers must fully indemnify TI and its representatives against any damages arising out of the use of TI products in such safety-critical applications.

TI products are neither designed nor intended for use in military/aerospace applications or environments unless the TI products are specifically designated by TI as military-grade or "enhanced plastic." Only products designated by TI as military-grade meet military specifications. Buyers acknowledge and agree that any such use of TI products which TI has not designated as military-grade is solely at the Buyer's risk, and that they are solely responsible for compliance with all legal and regulatory requirements in connection with such use.

TI products are neither designed nor intended for use in automotive applications or environments unless the specific TI products are designated by TI as compliant with ISO/TS 16949 requirements. Buyers acknowledge and agree that, if they use any non-designated products in automotive applications, TI will not be responsible for any failure to meet such requirements.

Following are URLs where you can obtain information on other Texas Instruments products and application solutions:

Products

Audio	www.ti.com/audio
Amplifiers	amplifier.ti.com
Data Converters	dataconverter.ti.com
DLP® Products	www.dlp.com
DSP	dsp.ti.com
Clocks and Timers	www.ti.com/clocks
Interface	interface.ti.com
Logic	logic.ti.com
Power Mgmt	power.ti.com
Microcontrollers	microcontroller.ti.com
RFID	www.ti-rfid.com
OMAP Mobile Processors	www.ti.com/omap
Wireless Connectivity	www.ti.com/wirelessconnectivity

Applications

Communications and Telecom	www.ti.com/communications
Computers and Peripherals	www.ti.com/computers
Consumer Electronics	www.ti.com/consumer-apps
Energy and Lighting	www.ti.com/energy
Industrial	www.ti.com/industrial
Medical	www.ti.com/medical
Security	www.ti.com/security
Space, Avionics and Defense	www.ti.com/space-avionics-defense
Transportation and Automotive	www.ti.com/automotive
Video and Imaging	www.ti.com/video

TI E2E Community Home Page

e2e.ti.com

Mailing Address: Texas Instruments, Post Office Box 655303, Dallas, Texas 75265
Copyright © 2011, Texas Instruments Incorporated