

# HALCoGen-CSP Without LDRA

This document serves as the installation guide for the HALCoGen-CSP, which contains the following items:

- HALCoGen CSP Documents and Reports
- HALCoGen Test Automation Unit (HALCoGen TAU)

The latest HALCoGen-CSP version can be downloaded from the following URL:  
<http://www.ti.com/tool/safeti-halco-gen-csp>.

## Contents

1	Software Prerequisite .....	1
2	Steps to Install HALCoGen-CSP .....	2
3	Setting up LDRA Unit .....	3

## List of Figures

1	Choose Install Component .....	2
2	Compiler Selection .....	3
3	Coverage Selection.....	3
4	Source Code Browser Selection.....	4
5	Choose TI CCS Install Path .....	4
6	Project Configuration .....	5
7	Run License Configuration Manager as Admin.....	5
8	LDRA License Configuration .....	6
9	Start or Restart FlexLM Server Status .....	6

## Trademarks

Code Composer Studio is a trademark of Texas Instruments.

Microsoft Office is a trademark of Microsoft Corporation in the United States and/or other countries, or both.

Windows is a registered trademark of Microsoft Corporation in the United States and/or other countries, or both.

All other trademarks are the property of their respective owners.

## 1 Software Prerequisite

- Windows® Windows version 7 or higher
- Code Composer Studio™ 5.4 (or higher)
- Microsoft Office™ 2007 (or higher)
- Perl 5.x. Download Link → <http://www.perl.org/get.html#win32>
- LDRAunit-TI-Qual 9.4.3 (or higher)

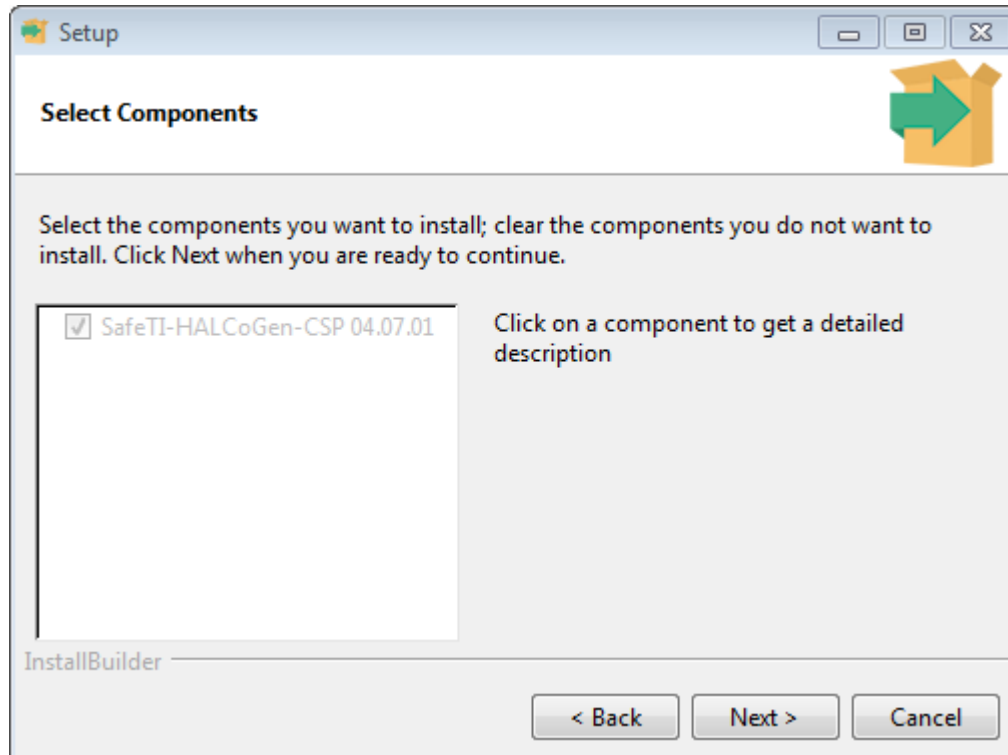
---

**NOTE:** LDRA Unit is not provided as a part of the CSP download. To re-run the unit tests using the included Test automation unit software, customers are required to purchase and install LDRA Unit software from LDRA. This guide explains LDRA Unit installation settings required for the Test automation unit. For LDRA procurement info, see the *HALCoGen-CSP Without LDRA User's Guide* (SPNU633).

---

## 2 Steps to Install HALCoGen-CSP

1. Select the installer.  
Run the *SafeTI-HALCoGen-CSP\_xx.yy.zz-installer.exe*.
2. Choose the Install components.  
Choose the HALCoGen-CSP (see [Figure 1](#)).

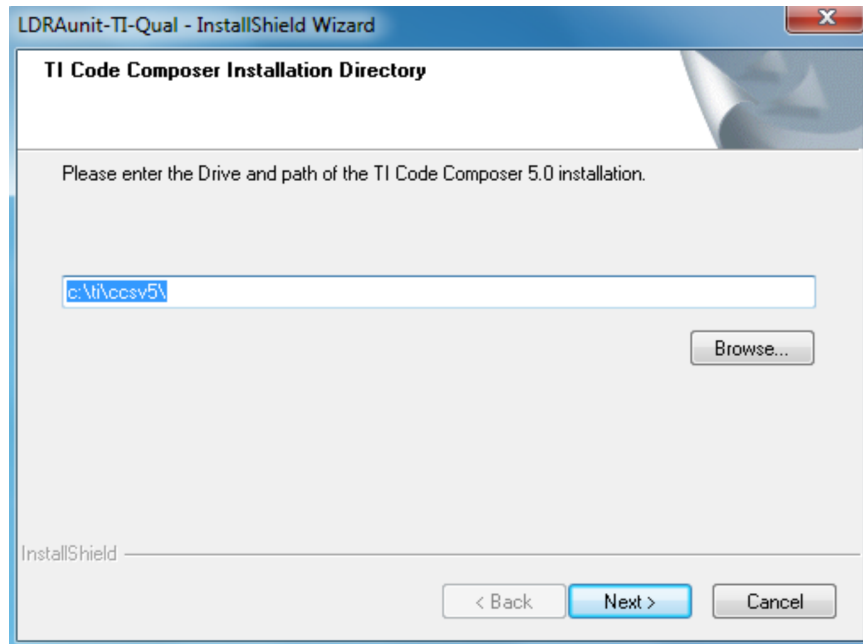


**Figure 1. Choose Install Component**

### 3 Setting up LDRA Unit

1. LDRA UNIT – compiler selection.

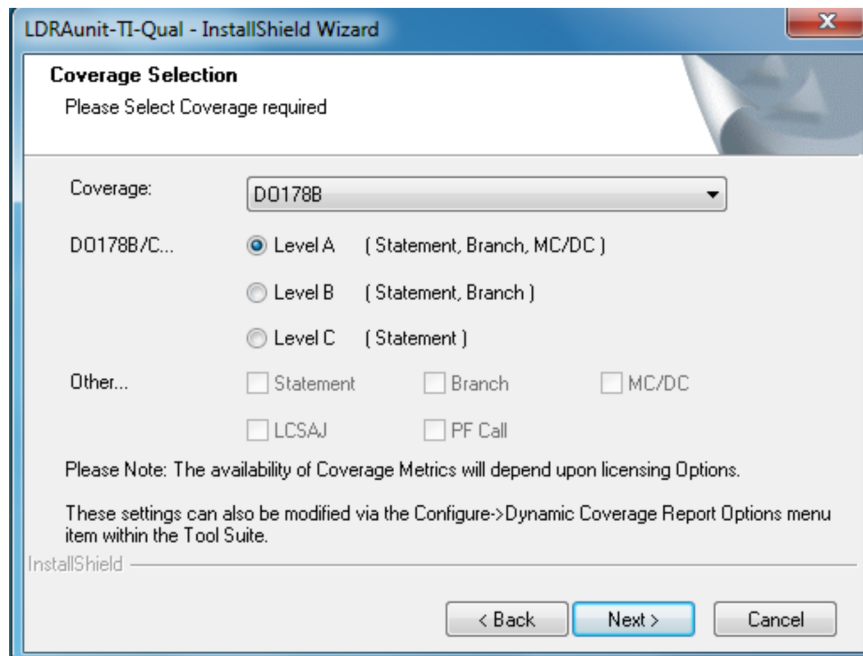
Choose Texas Instruments Code Composer v5.0 (Default) (see [Figure 2](#)).



**Figure 2. Compiler Selection**

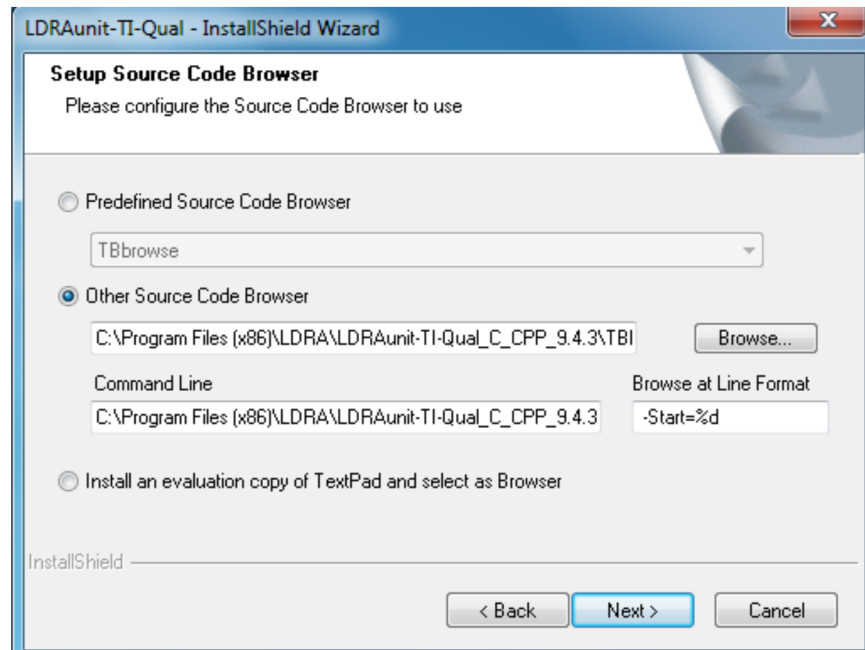
2. LDRA unit – coverage selection.

Leave it as default (see [Figure 3](#)).



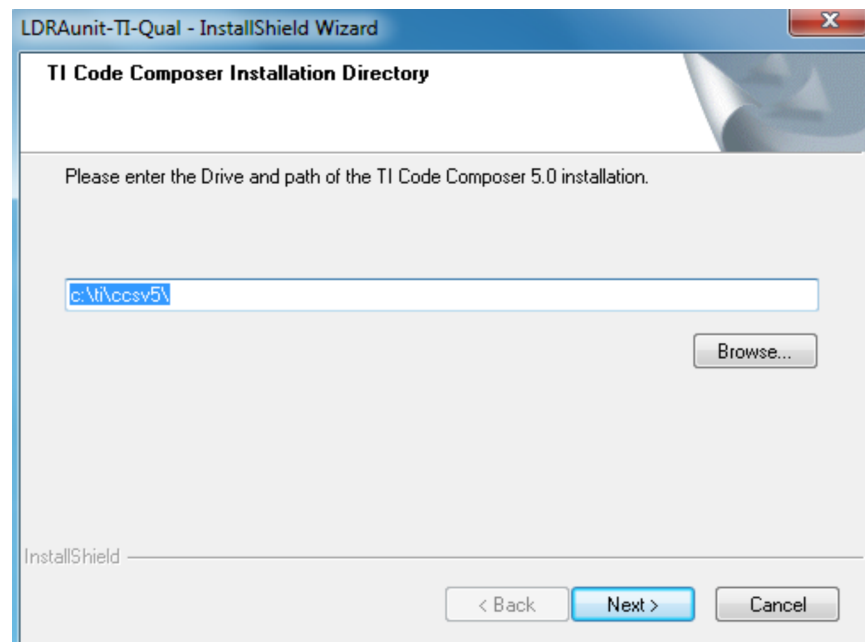
**Figure 3. Coverage Selection**

3. LDRA unit – source code browser selection.  
Leave it as default or browse to the desired editor.



**Figure 4. Source Code Browser Selection**

4. LDRA unit – choose TI CCS install path.  
Default: c:\ti\ccs5\ (see [Figure 5](#)).  
Browse to the latest TI CCS installation folder CCS5 or CCS6.



**Figure 5. Choose TI CCS Install Path**

- LDRA unit – project configuration (see Figure 6).  
Leave it as default to LDRA.

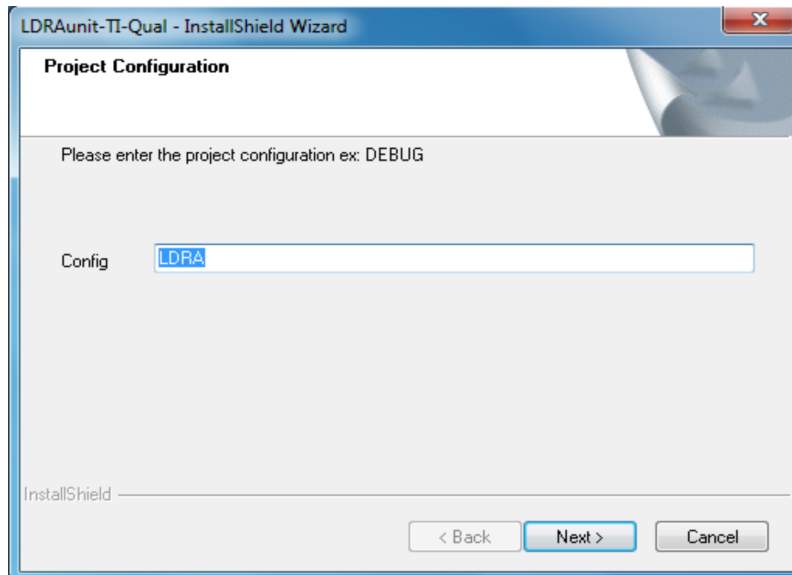


Figure 6. Project Configuration

- After installation of the LDRA unit and before using HALCoGen TAU, check whethLDRA unit – check LDRA FlexLM server status.  
er or not the LDRA FlexLM license server is up and running by doing the following steps.

**NOTE:** The License Configuration Manager must be run as Admin.

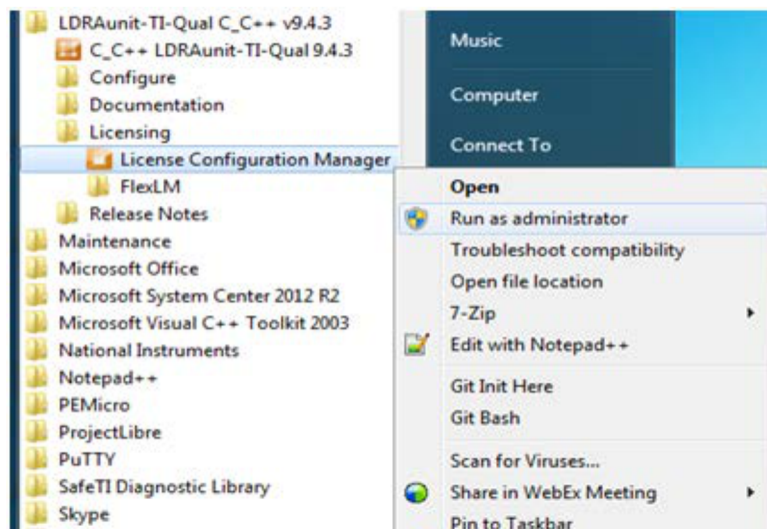


Figure 7. Run License Configuration Manager as Admin

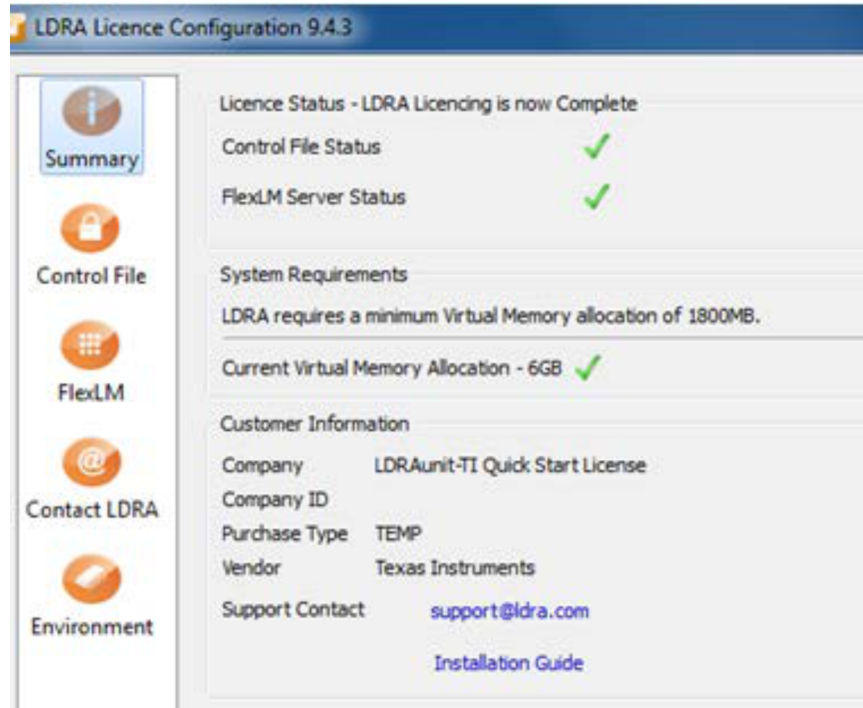


Figure 8. LDRA License Configuration

**NOTE:** IF you see the FlexLM Server Status as ✗, either the License is expired or the FlexLM service is not started. Restart or start the FlexLM License Service in the Windows as shown in Figure 9.

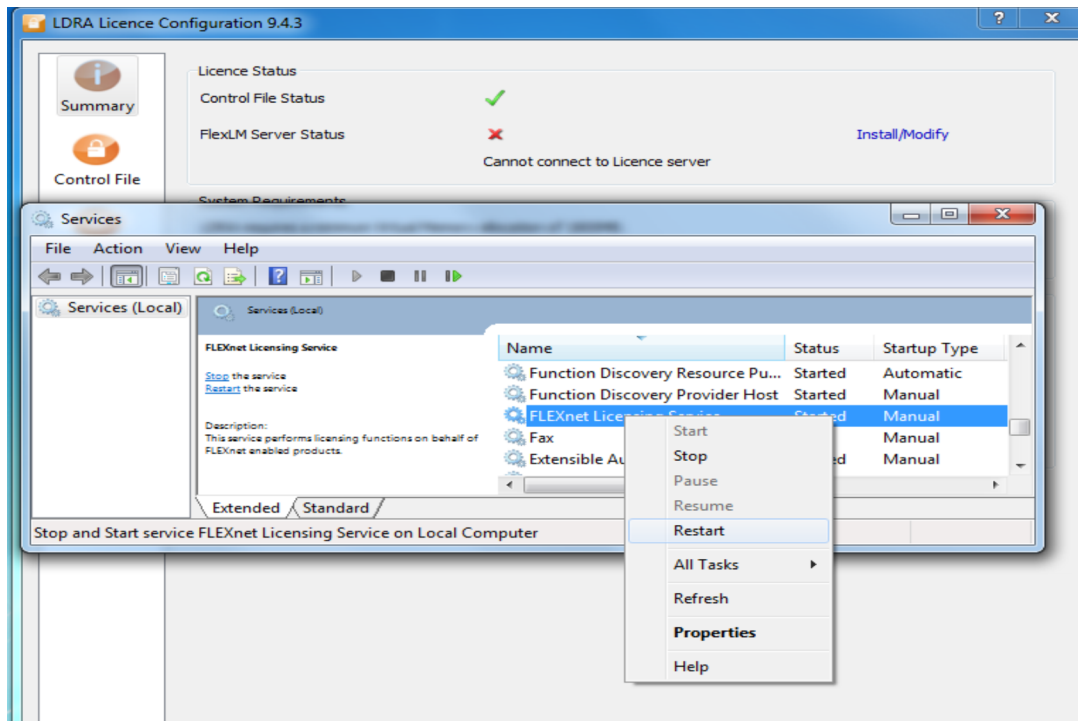


Figure 9. Start or Restart FlexLM Server Status

## IMPORTANT NOTICE AND DISCLAIMER

TI PROVIDES TECHNICAL AND RELIABILITY DATA (INCLUDING DATA SHEETS), DESIGN RESOURCES (INCLUDING REFERENCE DESIGNS), APPLICATION OR OTHER DESIGN ADVICE, WEB TOOLS, SAFETY INFORMATION, AND OTHER RESOURCES "AS IS" AND WITH ALL FAULTS, AND DISCLAIMS ALL WARRANTIES, EXPRESS AND IMPLIED, INCLUDING WITHOUT LIMITATION ANY IMPLIED WARRANTIES OF MERCHANTABILITY, FITNESS FOR A PARTICULAR PURPOSE OR NON-INFRINGEMENT OF THIRD PARTY INTELLECTUAL PROPERTY RIGHTS.

These resources are intended for skilled developers designing with TI products. You are solely responsible for (1) selecting the appropriate TI products for your application, (2) designing, validating and testing your application, and (3) ensuring your application meets applicable standards, and any other safety, security, regulatory or other requirements.

These resources are subject to change without notice. TI grants you permission to use these resources only for development of an application that uses the TI products described in the resource. Other reproduction and display of these resources is prohibited. No license is granted to any other TI intellectual property right or to any third party intellectual property right. TI disclaims responsibility for, and you will fully indemnify TI and its representatives against, any claims, damages, costs, losses, and liabilities arising out of your use of these resources.

TI's products are provided subject to [TI's Terms of Sale](#) or other applicable terms available either on [ti.com](http://ti.com) or provided in conjunction with such TI products. TI's provision of these resources does not expand or otherwise alter TI's applicable warranties or warranty disclaimers for TI products.

TI objects to and rejects any additional or different terms you may have proposed.

Mailing Address: Texas Instruments, Post Office Box 655303, Dallas, Texas 75265  
Copyright © 2022, Texas Instruments Incorporated