

TPS6598x OCP Mechanism and Programming Guide

Jimmy Hua

ABSTRACT

This document describes the functionality of the overcurrent protection (OCP) mechanism of the TPS6598x device, and how to program it using the *Application Customization Tool*. This guide defines THE peak current and provides steps on how to set the threshold of OCP on the TPS6598x device.

NOTE: This tool replaces the TPS6598x Application-Customization Tool; therefore, TI recommends using this tool to receive the latest firmware and features.

Contents

1	Introduction	2
2	Using the TPS6598x Application Configuration Tool Startup	3
3	Setting OCP Threshold on the TPS6598x.....	3
4	Results and Analysis	7

List of Figures

1	Main Window of TPS6598x Application Configuration Tool.....	3
2	Transmit Source Capabilities Window	4
3	Peak Current Configuration Drop-down	4
4	Global System Configuration Window	5
5	Load Application Firmware Window.....	6
6	Successful Flash Update	6
7	Default OCP Event Waveform	7
8	Default OCP Event Waveform (Scope).....	8

List of Tables

Trademarks

LaunchPad is a trademark of Texas Instruments.
Windows is a registered trademark of Microsoft Corporation.
All other trademarks are the property of their respective owners.

1 Introduction

The TPS6598x family of devices can be configured to set the OCP threshold of the device. Upon an OCP trip, the device sends out a command to discharge the voltage on VBUS.

1.1 Related Documents

- [TPS65988 Dual Port USB Type-C & USB PD Controller](#), data sheet
- [TPS65981, TPS65982, and TPS65986 Host Interface Technical Reference Manual](#)

1.2 Hardware

The required hardware follows:

- Windows®-based PC with at least one USB 2.0 (or later) port
- TPS6598x-EVM
- Barrel jack, laptop charger, power-supply AC adapter (20 V)
- USB Micro-B to USB Standard-A cable (for the USB2.0 low-speed endpoint [USB EP] option)
- TotalPhase Aardvark USB-to-SPI/I2C Host adapter + USB standard-B to -A cable + jumper wires or LaunchPad™ EVM to Aardvark adapter (for the Aardvark option)

NOTE: Only one of the two adapter options is required: TotalPhase Aardvark or USB Micro-B to USB Standard-A cable. The hardware and setup are different depending on the adapter selected.

1.3 OCP Mechanism

The OCP mechanism is primarily set by application firmware. The ILIMPPHV register is configured so that currents which exceed the ILIMPPHV set point over an extended time result in an OCP fault in the system.

NOTE: The TPS6598X Application Customization Tool GUI sets the OCP limit as a hard-set value and does not follow the USB PD peak current specifications for variable overload capabilities in the [USB PD](#) document, Section 6.4.1.2.3.6. This means that the maximum current and peak current percentage together create the overall OCP threshold.

1.4 Recommended Default Settings

When using the TPS65988EVM, the base firmware in the Application Customization Tool automatically sets Peak Current to 100% and the Overcurrent Timeout to 1.28 ms.

2 Using the TPS6598x Application Configuration Tool Startup

See the [Application Customization Tool User's Guide](#) for the basics on start-up using the Application Configuration Tool.

3 Setting OCP Threshold on the TPS6598x

3.1 Setting OCP Peak Current Threshold

After the desired firmware is selected, use the following instructions to set the desired OCP threshold.

1. Click on the desired port to be programmed (Device 1, port X), as shown in [Figure 1](#).

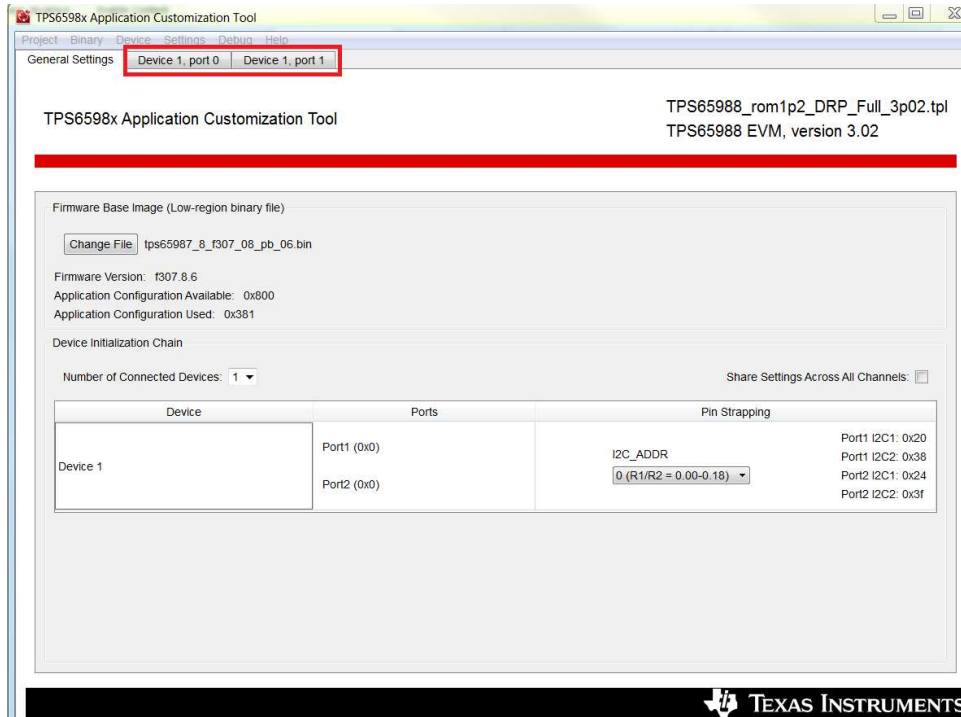


Figure 1. Main Window of TPS6598x Application Configuration Tool

- Navigate to either Transmit Source Capabilities or Transmit Sink Capabilities, depending on the intended use case (see [Figure 2](#)).

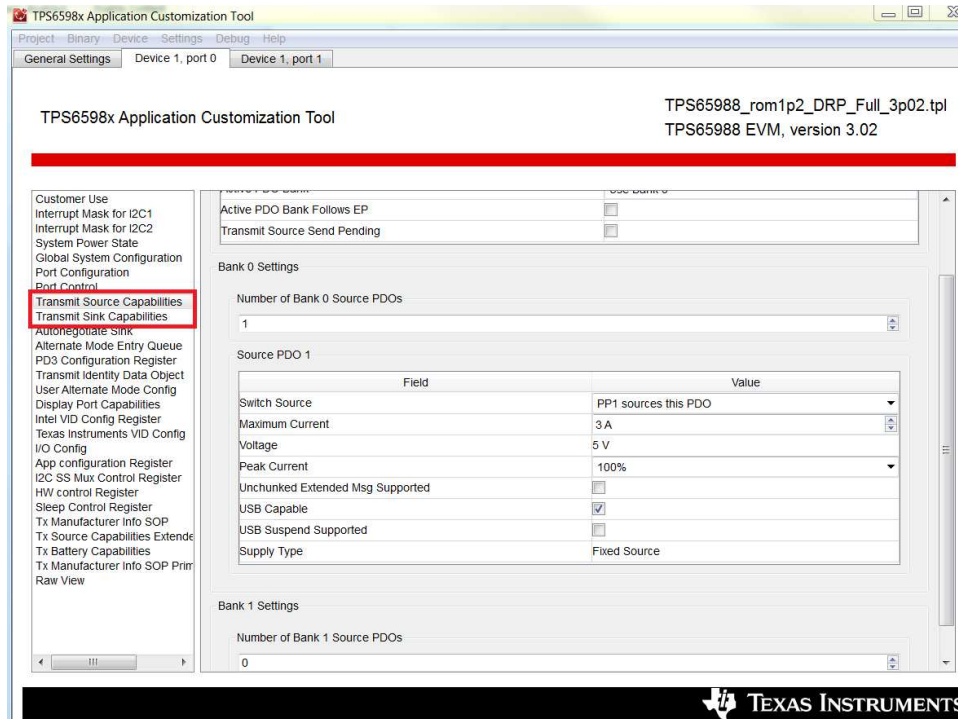


Figure 2. Transmit Source Capabilities Window

- Click on the Peak Current drop-down box to configure the settings for the desired application (see [Figure 3](#)).

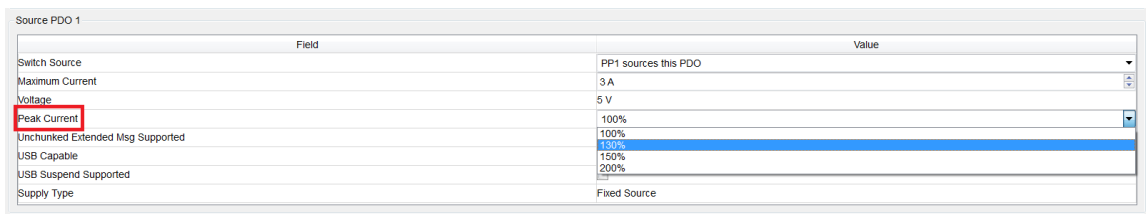


Figure 3. Peak Current Configuration Drop-down

3.2 Setting OCP Timeout Limit

The following instructions provide details on setting the desired OCP Timeout limit:

1. Navigate to Global System Configuration to configure the intended Overcurrent Timeout value. The drop-down box allows for multiple time-out configuration settings (see [Figure 4](#)).

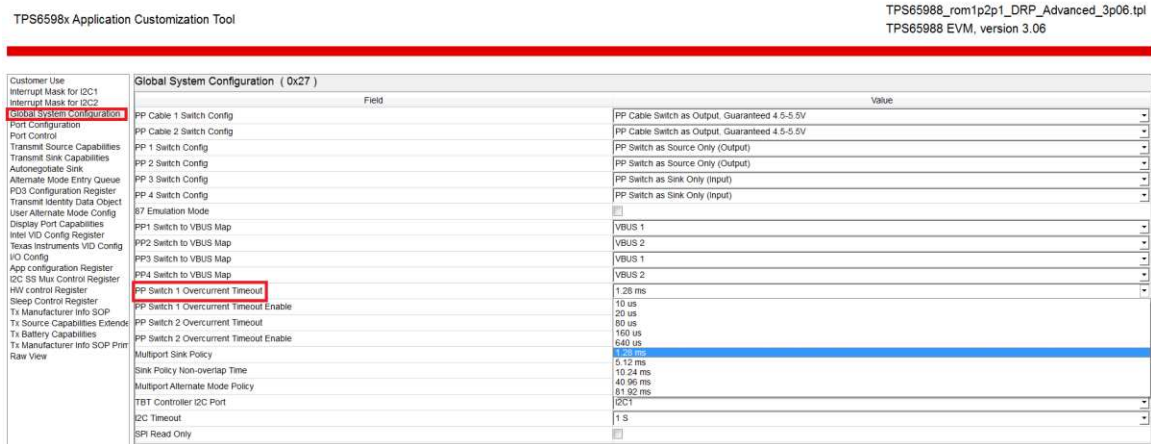


Figure 4. Global System Configuration Window

2. After setting the desired Overcurrent Timeout, click the Device menu and then select *Flash App Firmware to Device*.
3. Specify the appropriate adapter.

- Click the Read Current Region Offsets button to automatically obtain correct offsets (optional), as shown in [Figure 5](#).

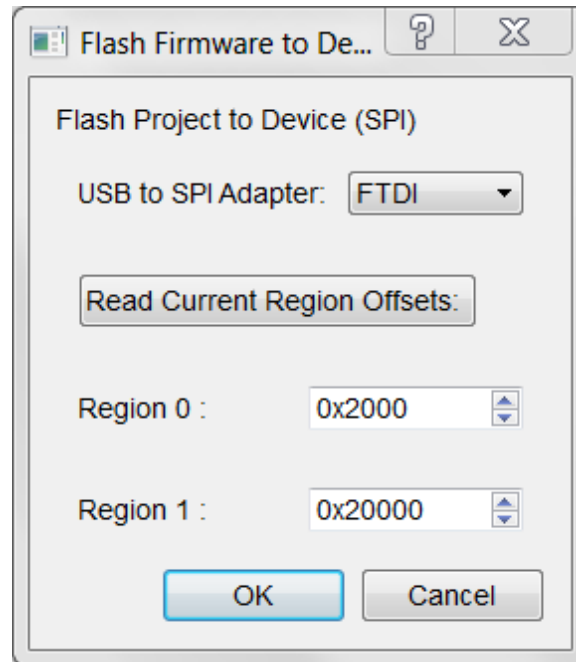


Figure 5. Load Application Firmware Window

- Click OK. If successful, a window displays indicating a successful SPI Flash (see [Figure 6](#)).



Figure 6. Successful Flash Update

- Reset the TPS6598x device to load the new firmware.

4 Results and Analysis

4.1 Test Procedure

To perform the OCP test, do the following:

1. Power the TPS65988EVM through the barrel jack or an external power supply.
2. Connect a UFP board to the TPS65988EVM through the USB Type-C cable. In the following test case, source PDO of TPS65988EVM was set to 5 V at 3 A.
3. Connect an oscilloscope probe onto the VBUS test point of the port that has a UFP board attached.
4. Set up an electronic load (e-load) between VBUS and GND on the UFP board.
5. Configure the oscilloscope to trigger off the negative edge of the VBUS probe line. This lets the user know when an OCP event has occurred.
6. When the test setup has been configured properly, press TRANS to set the current transition. This step controls the current level at which the e-load transitions. If the slew rate is too slow, go to SLEW and set an appropriate level to decrease the time each transition requires to reach the set high current.
7. Turn on the INPUT button to start using the e-load and loading the UFP board. At this point, an OCP event should be captured on the oscilloscope.

4.2 Test Results

Figure 7 shows the default OCP event waveform.



Figure 7. Default OCP Event Waveform

The waveform in Figure 7 has the following configuration flashed onto the TPS65988EVM:

- Voltage: 5 V
- Maximum current: 3 A
- Peak current: 100%
- PP switch Overcurrent Timeout: 1.28 ms

NOTE: The measurement cursors were set based on when the e-load went above the peak current programmed, to when the VBUS line responded by pulling the voltage to ground. In this example, the Overcurrent Timeout was measured to be 1.56 ms, which implies that some extra delay (approximately 300 μ s) caused the time-out to be longer than expected. This falls within the expected time-out value, because the time it takes VBUS to pull low after an OCP event always includes some propagation and a synchronizer timing delay.

Figure 8 shows the default OCP event waveform scope.

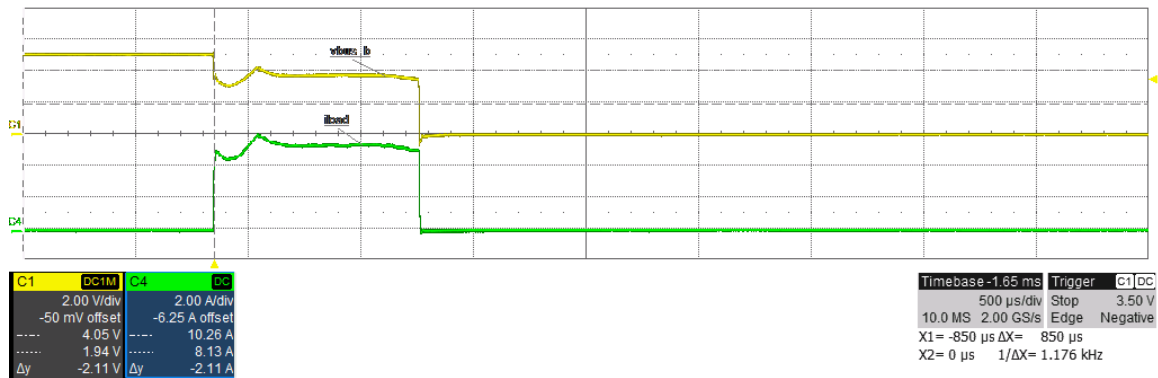


Figure 8. Default OCP Event Waveform (Scope)

The waveform in Figure 8 has the following configuration flashed onto the TPS65988EVM:

- Voltage: 5 V
- Maximum current: 3 A
- Peak current: 130%
- PP switch Overcurrent Timeout: 640 μ s

NOTE: In this example, the Overcurrent Timeout was measured to be 850 μ s, corresponding to the same delay issue of approximately 300 μ s seen in the previous waveform (see Figure 7).

As previously shown, the OCP mechanism can be configured by accessing the Global System Register (0x27). The peak current and time delay can be adjusted to suit the application of the user.

IMPORTANT NOTICE FOR TI DESIGN INFORMATION AND RESOURCES

Texas Instruments Incorporated ("TI") technical, application or other design advice, services or information, including, but not limited to, reference designs and materials relating to evaluation modules, (collectively, "TI Resources") are intended to assist designers who are developing applications that incorporate TI products; by downloading, accessing or using any particular TI Resource in any way, you (individually or, if you are acting on behalf of a company, your company) agree to use it solely for this purpose and subject to the terms of this Notice.

TI's provision of TI Resources does not expand or otherwise alter TI's applicable published warranties or warranty disclaimers for TI products, and no additional obligations or liabilities arise from TI providing such TI Resources. TI reserves the right to make corrections, enhancements, improvements and other changes to its TI Resources.

You understand and agree that you remain responsible for using your independent analysis, evaluation and judgment in designing your applications and that you have full and exclusive responsibility to assure the safety of your applications and compliance of your applications (and of all TI products used in or for your applications) with all applicable regulations, laws and other applicable requirements. You represent that, with respect to your applications, you have all the necessary expertise to create and implement safeguards that (1) anticipate dangerous consequences of failures, (2) monitor failures and their consequences, and (3) lessen the likelihood of failures that might cause harm and take appropriate actions. You agree that prior to using or distributing any applications that include TI products, you will thoroughly test such applications and the functionality of such TI products as used in such applications. TI has not conducted any testing other than that specifically described in the published documentation for a particular TI Resource.

You are authorized to use, copy and modify any individual TI Resource only in connection with the development of applications that include the TI product(s) identified in such TI Resource. NO OTHER LICENSE, EXPRESS OR IMPLIED, BY ESTOPPEL OR OTHERWISE TO ANY OTHER TI INTELLECTUAL PROPERTY RIGHT, AND NO LICENSE TO ANY TECHNOLOGY OR INTELLECTUAL PROPERTY RIGHT OF TI OR ANY THIRD PARTY IS GRANTED HEREIN, including but not limited to any patent right, copyright, mask work right, or other intellectual property right relating to any combination, machine, or process in which TI products or services are used. Information regarding or referencing third-party products or services does not constitute a license to use such products or services, or a warranty or endorsement thereof. Use of TI Resources may require a license from a third party under the patents or other intellectual property of the third party, or a license from TI under the patents or other intellectual property of TI.

TI RESOURCES ARE PROVIDED "AS IS" AND WITH ALL FAULTS. TI DISCLAIMS ALL OTHER WARRANTIES OR REPRESENTATIONS, EXPRESS OR IMPLIED, REGARDING TI RESOURCES OR USE THEREOF, INCLUDING BUT NOT LIMITED TO ACCURACY OR COMPLETENESS, TITLE, ANY EPIDEMIC FAILURE WARRANTY AND ANY IMPLIED WARRANTIES OF MERCHANTABILITY, FITNESS FOR A PARTICULAR PURPOSE, AND NON-INFRINGEMENT OF ANY THIRD PARTY INTELLECTUAL PROPERTY RIGHTS.

TI SHALL NOT BE LIABLE FOR AND SHALL NOT DEFEND OR INDEMNIFY YOU AGAINST ANY CLAIM, INCLUDING BUT NOT LIMITED TO ANY INFRINGEMENT CLAIM THAT RELATES TO OR IS BASED ON ANY COMBINATION OF PRODUCTS EVEN IF DESCRIBED IN TI RESOURCES OR OTHERWISE. IN NO EVENT SHALL TI BE LIABLE FOR ANY ACTUAL, DIRECT, SPECIAL, COLLATERAL, INDIRECT, PUNITIVE, INCIDENTAL, CONSEQUENTIAL OR EXEMPLARY DAMAGES IN CONNECTION WITH OR ARISING OUT OF TI RESOURCES OR USE THEREOF, AND REGARDLESS OF WHETHER TI HAS BEEN ADVISED OF THE POSSIBILITY OF SUCH DAMAGES.

You agree to fully indemnify TI and its representatives against any damages, costs, losses, and/or liabilities arising out of your non-compliance with the terms and provisions of this Notice.

This Notice applies to TI Resources. Additional terms apply to the use and purchase of certain types of materials, TI products and services. These include; without limitation, TI's standard terms for semiconductor products (<http://www.ti.com/sc/docs/stdterms.htm>), [evaluation modules](#), and [samples](http://www.ti.com/sc/docs/sampterm.htm) (<http://www.ti.com/sc/docs/sampterm.htm>).

Mailing Address: Texas Instruments, Post Office Box 655303, Dallas, Texas 75265
Copyright © 2017, Texas Instruments Incorporated