

TI USB Hubs: Adjusting USB_R1

Malik Barton

ABSTRACT

TUSB8020B, TUSB8041, TUSB8042, TUSB8043 and TUSB8044 are all USB-IF compliant USB 3.x hubs. They provide simultaneous SuperSpeed and High-speed connections on the upstream port and provide SuperSpeed, High-speed, Full-speed or Low-speed connections on the downstream ports. TUSB4041I and TUSB4020BI are a USB-IF compliant USB 2.0 hubs. They provide High-speed connection on the upstream port and provide High-speed, Full-speed or Low-speed connections on the downstream ports. This document describes and demonstrates the effects of adjusting the pull down resistor on USB_R1 ranging from a max of 10.85- k Ω \pm 1% to 8.25-k Ω \pm 1%, with a recommended value of 9.53-k Ω \pm 1%.

Contents

1	Introduction	2
2	Adjusting the USB_R1 Resistor.....	2
3	Test Setup	2
4	Results	4
5	References	7

List of Figures

1	TUSB8041 Demo Board Rev D Test Setup.....	3
2	EHSETT Tool Window Example Setup	3
3	USB_R1 = 10.95-k Ω (+15%)	4
4	USB_R1 = 10.45-k Ω (+10%)	5
5	USB_R1 = 10-k Ω (+5%)	5
6	USB_R1 = 9.53-k Ω	6
7	USB_R1 = 9.05-k Ω (-5%).....	6
8	USB_R1 = 8.55-k Ω (-10%)	7

List of Tables

Trademarks

All trademarks are the property of their respective owners.

1 Introduction

The TI USB Hubs provide an external pin named USB_R1 to adjust the USB 2.0 High-speed drive strength of the driver. To configure USB_R1 pin correctly, connect a pull down resistor to GND. The value of this resistor directly affects the USB 2.0 eye height that can be measured on the downstream ports of the USB Hub. Adjusting this value may help to improve the USB 2.0 eye height when necessary. Adjusting this value only affects the downstream port USB 2.0 High-speed transmitters and not the USB 3.x SuperSpeed transmitters.

2 Adjusting the USB_R1 Resistor

TI recommends a 9.53-k Ω \pm 1% precision resistor to be connected between to the external pin named USB_R1 and GND. Changing the value of this resistor adjusts the output driver strength for USB 2.0 High-speed transmitters. Increasing the value of this resistor decreases the output driver strength for USB 2.0 High-speed transmitters, decreasing eye height. Decreasing the value of this resistor increases the output driver strength for USB 2.0 High-speed transmitters, increasing eye height.

- USB_R1 Range:
- MAX: 10.85- k Ω \pm 1%
- TYP (Recommended): 9.53-k Ω \pm 1%
- MIN: 8.25-k Ω \pm 1%

NOTE: The value of the USB_R1 resistor will set the same output driver strength for USB 2.0 High-speed transmitters on all the downstream ports and the upstream ports.

The following sections show the test setup and results of using different resistor values for USB_R1 and its effect on the USB 2.0 High-speed eye diagram of the TI USB Hub downstream ports.

3 Test Setup

In order to test the USB 2.0 High-speed eye diagram of TI USB Hub downstream ports the following set-up was used:

1. LeCroy digital scope, model SDA813Zi
2. [TUSB8041 Demo Board Rev D](#)
3. [USB.org Host Test Fixture](#)
4. [USB.org EHSETT Tool](#)
5. PC Dell XPS 8700

NOTE: [TUSB8044RGCEVM](#) can also be used for this test.

3.1 Test Procedure

1. Connect a +5V external power supply to the EVM.
2. Connect the EVM's upstream port to one of the any USB 3.0 ports (available in the Dell XPS PC).
3. Connect the USB.org Host Test Fixture to one of the EVM downstream port.
4. Connect the Scope to the Host Test Fixture USB2.0 lines using SMA matched cables.

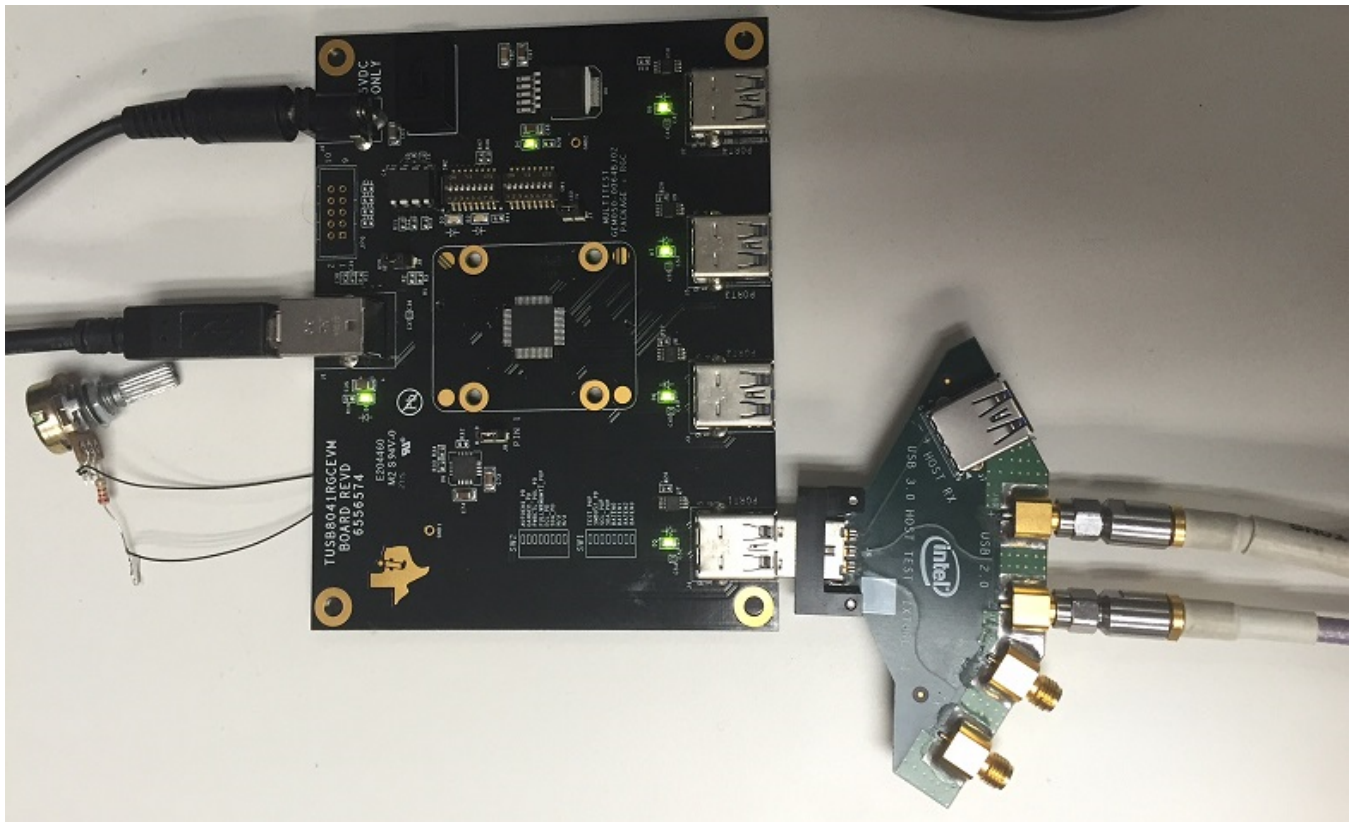


Figure 1. TUSB8041 Demo Board Rev D Test Setup

- Run the EHSETT tool and select “test Hub”, verify that the TUSB8041 is shown in the windows, then select Downstream TEST_PACKET for the downstream port to be tested.

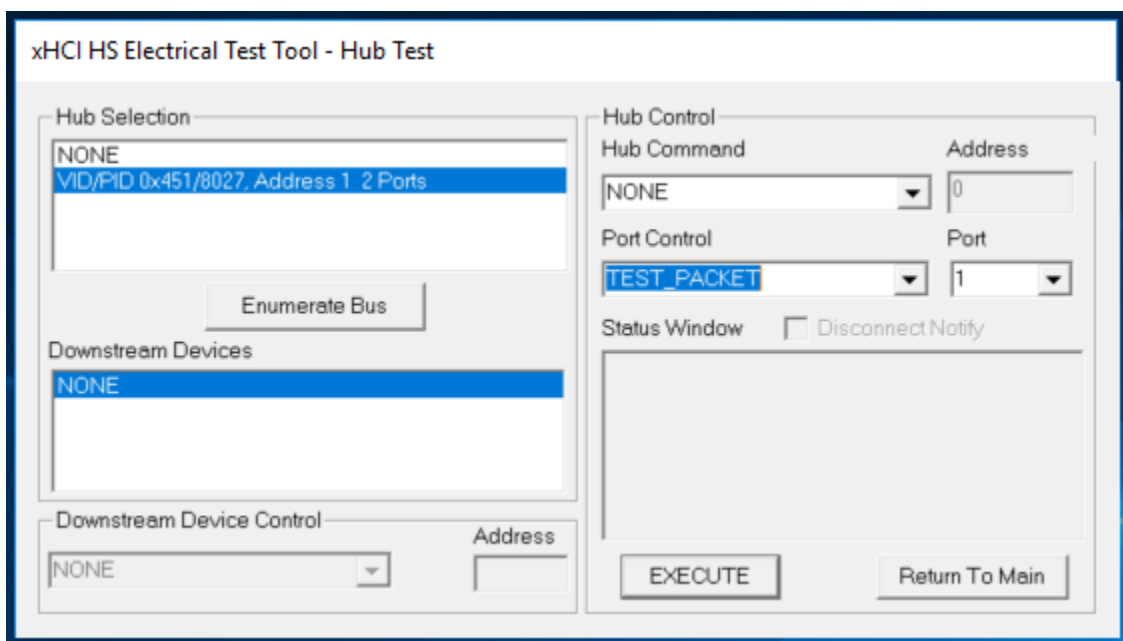


Figure 2. EHSETT Tool Window Example Setup

4 Results

Following figures show the High-Speed eye-diagram of the Hub downstream ports using different values of USB_R1. Values used are centered around TI recommend resistor value of 9.53-k Ω \pm 1%.

NOTE: Increasing or decreasing the value of the USB_R1 resistor by large margins may cause violations for the USB 2.0 High-speed Eye Mask during testing.

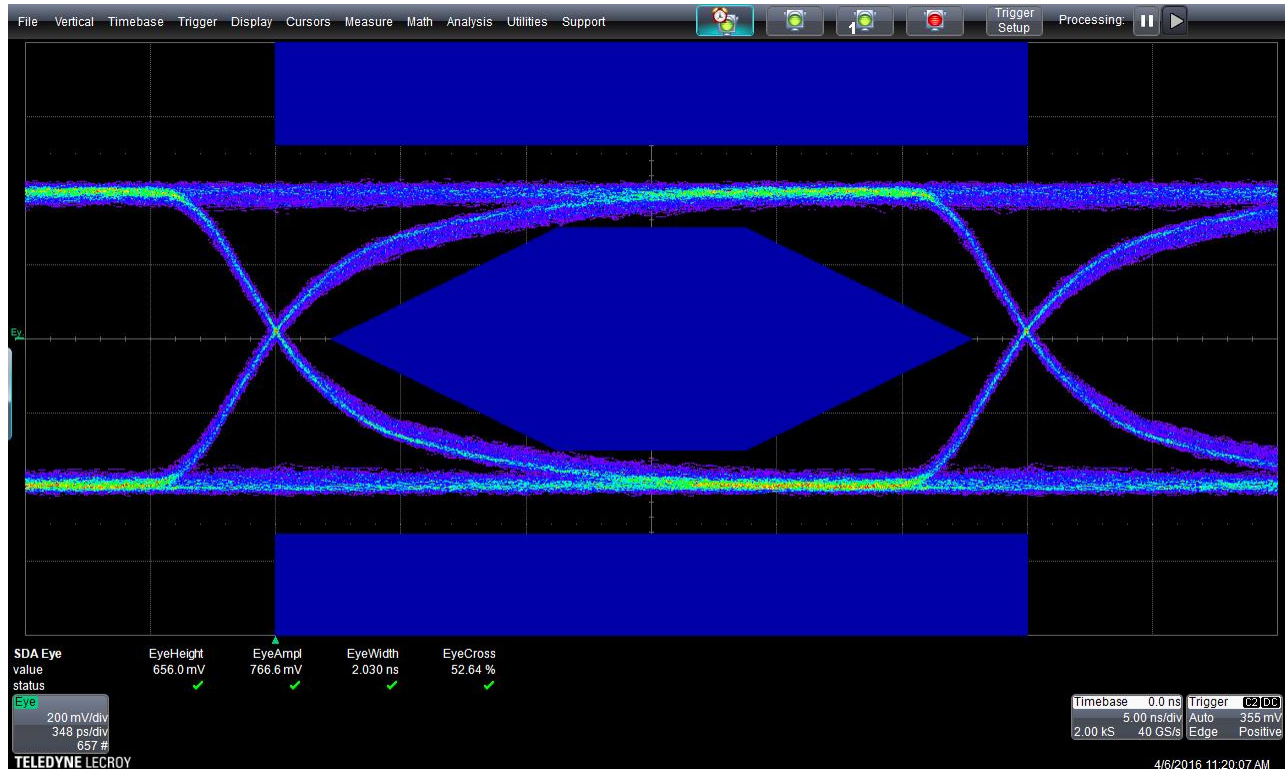


Figure 3. USB_R1 = 10.95-k Ω (+15%)

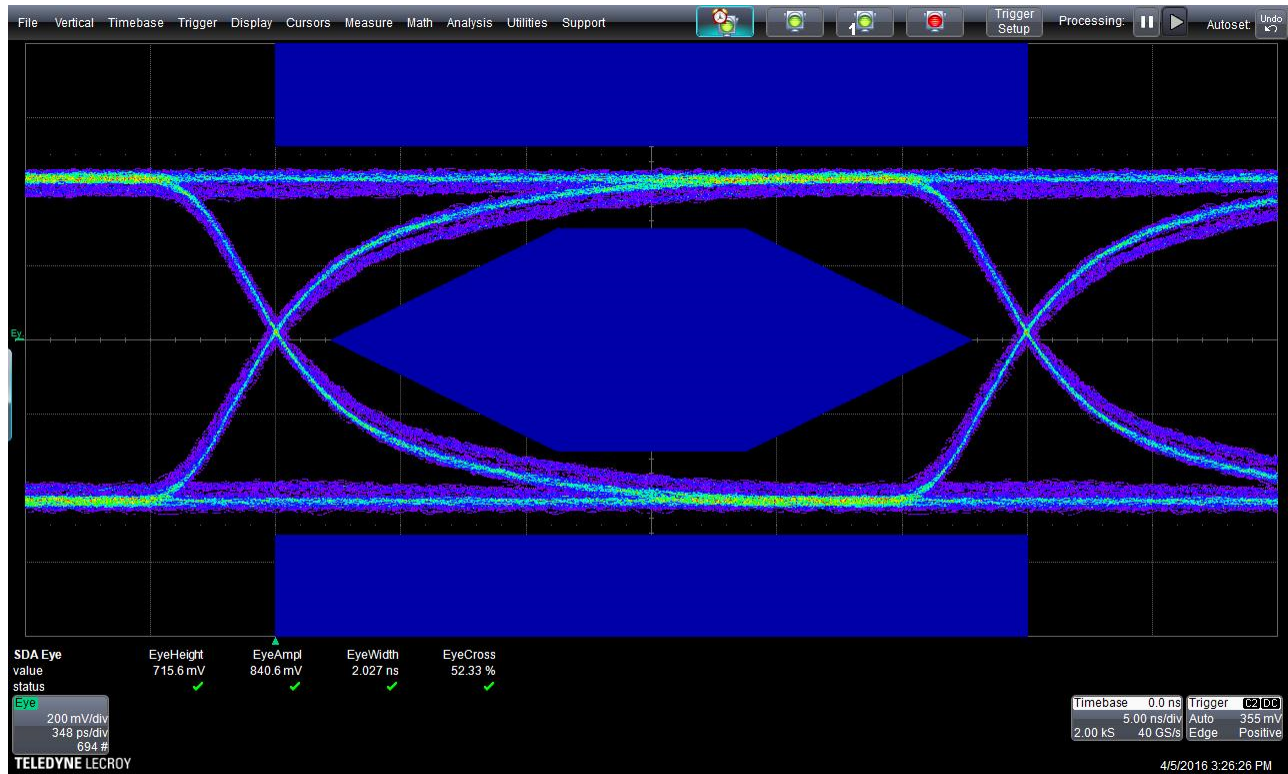


Figure 4. USB_R1 = 10.45-kΩ (+10%)

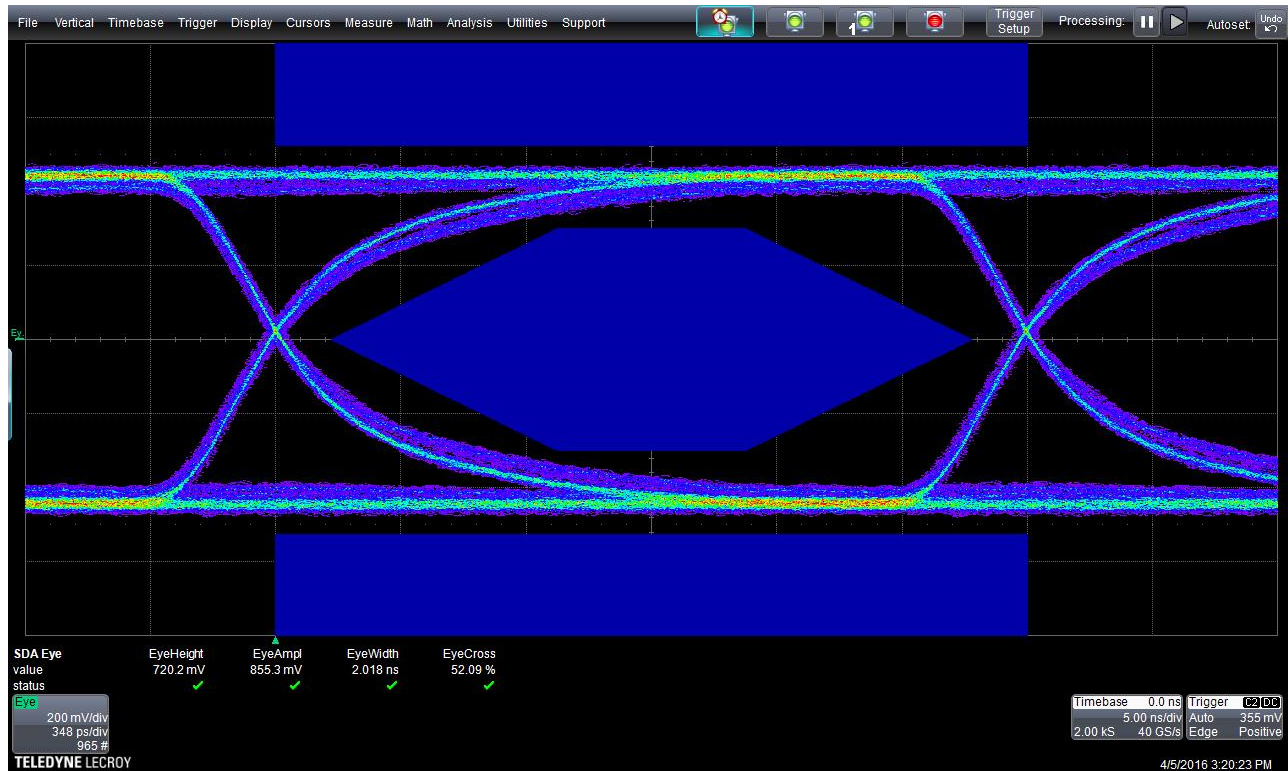


Figure 5. USB_R1 = 10-kΩ (+5%)

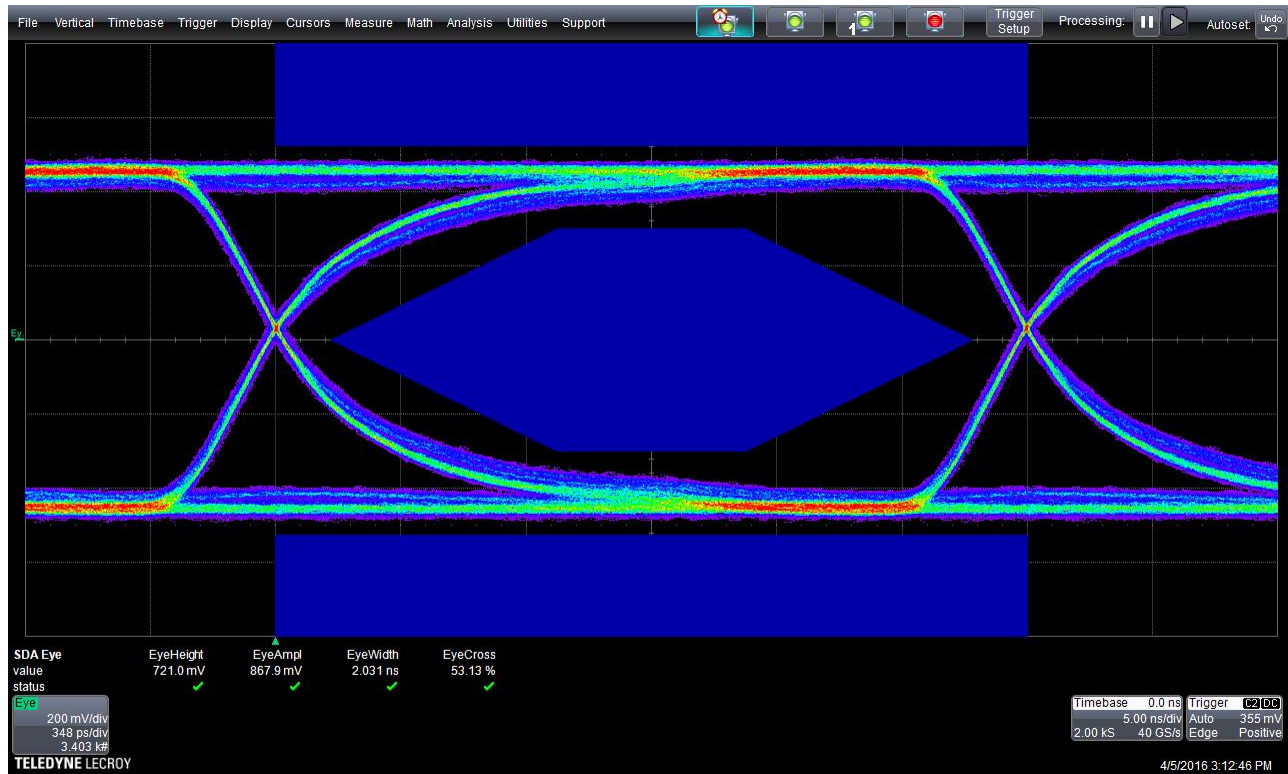


Figure 6. USB_R1 = 9.53-kΩ

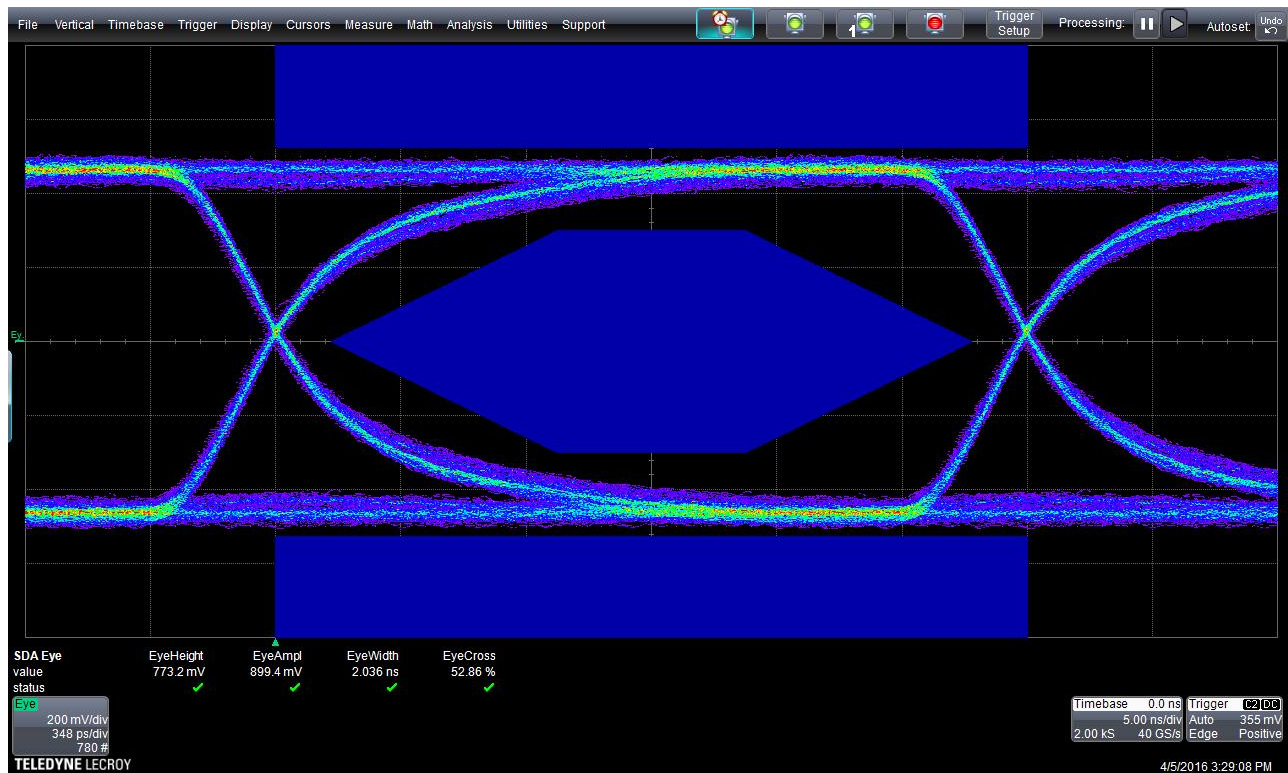


Figure 7. USB_R1 = 9.05-kΩ (-5%)

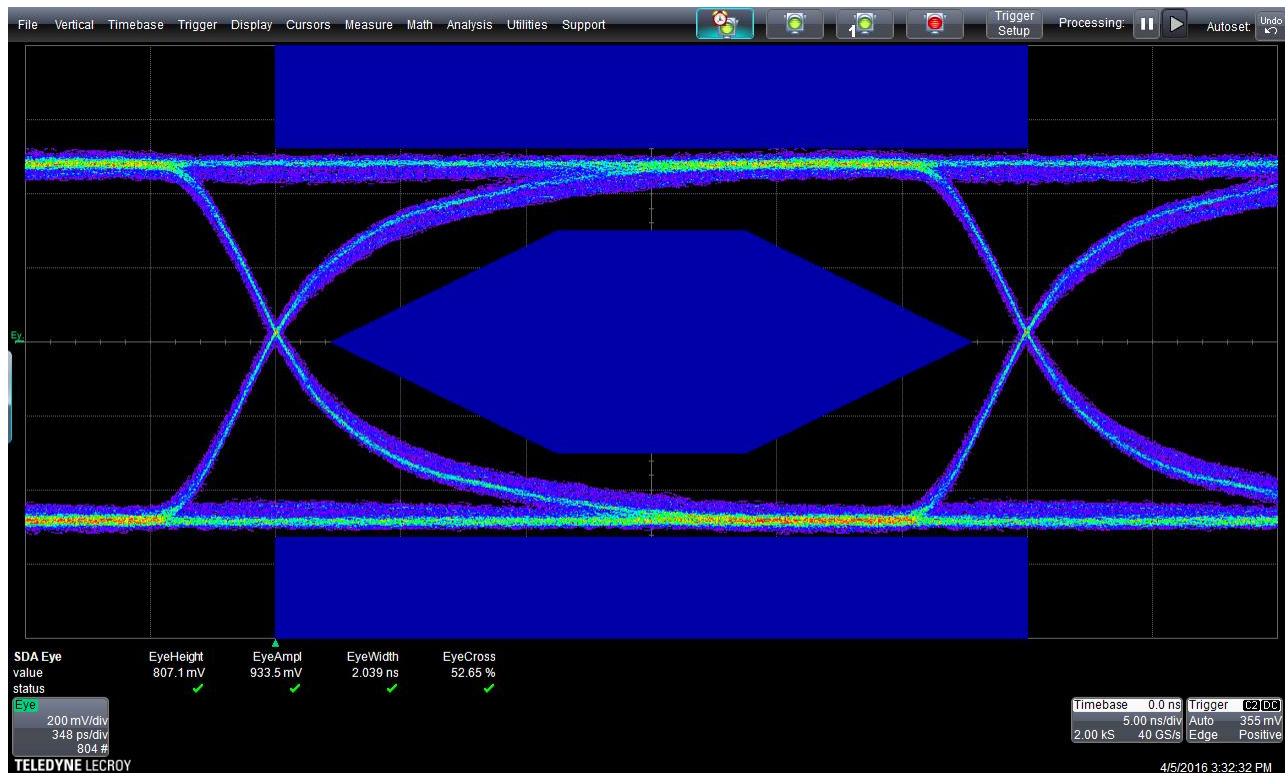


Figure 8. USB_R1 = 8.55-k Ω (-10%)

5 References

- [TUSB8020B](#)
- [TUSB8041](#)
- [TUSB8042](#)
- [TUSB8043](#)
- [TUSB8044](#)
- [TUSB8041EVM: Four-Port USB 3.0 SuperSpeed Hub Evaluation Module](#)
- [TUSB8044 Four-Port USB3.1 Gen1 Hub with USB Billboard Evaluation Module](#)
- [TUSB4020BI](#)
- [TUSB4041I](#)
- [TUSB4041PAPEVM Evaluation Module](#)

IMPORTANT NOTICE FOR TI DESIGN INFORMATION AND RESOURCES

Texas Instruments Incorporated ("TI") technical, application or other design advice, services or information, including, but not limited to, reference designs and materials relating to evaluation modules, (collectively, "TI Resources") are intended to assist designers who are developing applications that incorporate TI products; by downloading, accessing or using any particular TI Resource in any way, you (individually or, if you are acting on behalf of a company, your company) agree to use it solely for this purpose and subject to the terms of this Notice.

TI's provision of TI Resources does not expand or otherwise alter TI's applicable published warranties or warranty disclaimers for TI products, and no additional obligations or liabilities arise from TI providing such TI Resources. TI reserves the right to make corrections, enhancements, improvements and other changes to its TI Resources.

You understand and agree that you remain responsible for using your independent analysis, evaluation and judgment in designing your applications and that you have full and exclusive responsibility to assure the safety of your applications and compliance of your applications (and of all TI products used in or for your applications) with all applicable regulations, laws and other applicable requirements. You represent that, with respect to your applications, you have all the necessary expertise to create and implement safeguards that (1) anticipate dangerous consequences of failures, (2) monitor failures and their consequences, and (3) lessen the likelihood of failures that might cause harm and take appropriate actions. You agree that prior to using or distributing any applications that include TI products, you will thoroughly test such applications and the functionality of such TI products as used in such applications. TI has not conducted any testing other than that specifically described in the published documentation for a particular TI Resource.

You are authorized to use, copy and modify any individual TI Resource only in connection with the development of applications that include the TI product(s) identified in such TI Resource. NO OTHER LICENSE, EXPRESS OR IMPLIED, BY ESTOPPEL OR OTHERWISE TO ANY OTHER TI INTELLECTUAL PROPERTY RIGHT, AND NO LICENSE TO ANY TECHNOLOGY OR INTELLECTUAL PROPERTY RIGHT OF TI OR ANY THIRD PARTY IS GRANTED HEREIN, including but not limited to any patent right, copyright, mask work right, or other intellectual property right relating to any combination, machine, or process in which TI products or services are used. Information regarding or referencing third-party products or services does not constitute a license to use such products or services, or a warranty or endorsement thereof. Use of TI Resources may require a license from a third party under the patents or other intellectual property of the third party, or a license from TI under the patents or other intellectual property of TI.

TI RESOURCES ARE PROVIDED "AS IS" AND WITH ALL FAULTS. TI DISCLAIMS ALL OTHER WARRANTIES OR REPRESENTATIONS, EXPRESS OR IMPLIED, REGARDING TI RESOURCES OR USE THEREOF, INCLUDING BUT NOT LIMITED TO ACCURACY OR COMPLETENESS, TITLE, ANY EPIDEMIC FAILURE WARRANTY AND ANY IMPLIED WARRANTIES OF MERCHANTABILITY, FITNESS FOR A PARTICULAR PURPOSE, AND NON-INFRINGEMENT OF ANY THIRD PARTY INTELLECTUAL PROPERTY RIGHTS.

TI SHALL NOT BE LIABLE FOR AND SHALL NOT DEFEND OR INDEMNIFY YOU AGAINST ANY CLAIM, INCLUDING BUT NOT LIMITED TO ANY INFRINGEMENT CLAIM THAT RELATES TO OR IS BASED ON ANY COMBINATION OF PRODUCTS EVEN IF DESCRIBED IN TI RESOURCES OR OTHERWISE. IN NO EVENT SHALL TI BE LIABLE FOR ANY ACTUAL, DIRECT, SPECIAL, COLLATERAL, INDIRECT, PUNITIVE, INCIDENTAL, CONSEQUENTIAL OR EXEMPLARY DAMAGES IN CONNECTION WITH OR ARISING OUT OF TI RESOURCES OR USE THEREOF, AND REGARDLESS OF WHETHER TI HAS BEEN ADVISED OF THE POSSIBILITY OF SUCH DAMAGES.

You agree to fully indemnify TI and its representatives against any damages, costs, losses, and/or liabilities arising out of your non-compliance with the terms and provisions of this Notice.

This Notice applies to TI Resources. Additional terms apply to the use and purchase of certain types of materials, TI products and services. These include; without limitation, TI's standard terms for semiconductor products (<http://www.ti.com/sc/docs/stdterms.htm>), [evaluation modules](#), and [samples](http://www.ti.com/sc/docs/sampterm.htm) (<http://www.ti.com/sc/docs/sampterm.htm>).

Mailing Address: Texas Instruments, Post Office Box 655303, Dallas, Texas 75265
Copyright © 2018, Texas Instruments Incorporated