

AC-DC Non-Isolated SMPS for Single Phase Smart Meters Based on UCC28722

Harmeet Singh, Salil Chellappan, Sanjay Dixit

Power Stage

ABSTRACT

Single phase prepaid/smart meters need very low cost, low wattage ($< 2.5\text{ W}$) non-isolated power supply. The meters should be capable of working with an input voltage range of 100 VAC on the lower side, given poor utility conditions in some regions, to 415 VAC on the higher side so as to sustain phase-phase voltage as well. The real voltage levels can touch 500 VAC (415 VAC +20%).

The application report describes an innovative application of the UCC28722 flyback controller used in a buck configuration tailored for a smart energy metering application. This serves as superior alternative to existing power supplies with integrated MOSFET technology. The following list shows the benefits:

- Works for a wide input range (110 VAC–500 VAC)
- Uses lowest cost BJT making the overall solution cheap
- High conversion efficiency because of combination of frequency and peak current modulation
- Ultra low standby power of 75 mW
- Features drum core inductor for smallest form factor

This application report goes through the step-by-step procedures a designer must follow to complete an AC-DC Buck switch mode power supply unit (SMPS) using the UCC28722. The board has been built and tested based on this application report and is available for download as PMP7668 on www.ti.com.

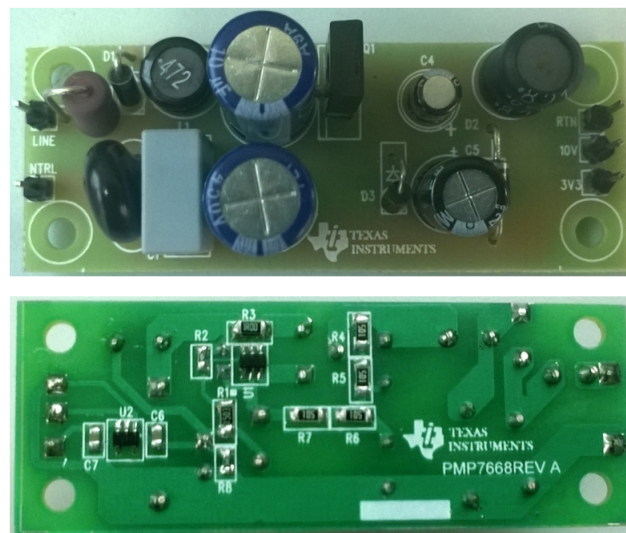


Figure 1. AC-DC Buck Design Using UCC28722 (PMP7668)

Contents

1	SMPS Design Specifications	3
2	Basic Principle of Buck Topology	3
2.1	Buck Steady-State Discontinuous Conduction Mode Analysis	4
3	Step-by-Step Design Procedure of UCC28722-Based Buck Converter	7
3.1	AC Input Stage Components	7
3.2	Feedback Resistors	7
3.3	VDD Capacitance	8
3.4	Startup Resistors and Startup Time	8
3.5	Current Sense Resistor	9
3.6	Output Inductor	10
3.7	Freewheeling Diode and Vdd Diode	10
3.8	Output Capacitor	10
3.9	Bipolar Junction Transistor	11
3.10	LDO for 3.3 V	12
4	Bill of Materials	13
5	PCB Details	14
6	Conclusion	15
7	References	15
Appendix A	Experimental Results	16

List of Figures

1	AC-DC Buck Design Using UCC28722 (PMP7668)	1
2	Buck Power Stage Schematic	3
3	Buck Power Stages in Discontinuous Mode	5
4	Discontinuous Mode Power Stage Buck Waveforms	6
5	Timing Diagram of Startup Sequence in UCC28722	8
6	Discontinuous Current Waveform in UCC28722	9
7	Complete Schematic of the PMP7668 Non-Isolated Buck Converter	12
8	PCB Top Silk Screen	14
9	PCB Bottom Silk Screen	14
10	PCB Composite Layout.....	14
11	Efficiency vs AC I/p Voltage (110 V–275 V)	16
12	Efficiency vs DC I/p Voltage (400 V–705 V)	16
13	Efficiency vs O/p Load Current at 325 VDC	17
14	O/p Voltage Variation vs O/p Load Current at 325 VDC	17
15	SW Node Waveform and Collector Current at Vin = 110 VAC, Full Load	18
16	Zoomed SW Waveform and Collector Current at Vin = 110 VAC, Full Load	18
17	SW node Waveform and Collector Current at Vin = 275 VAC, Full Load	19
18	Zoomed SW Waveform and Collector Current at Vin = 275 VAC, Full Load	19
19	Vout Ripple at Vin = 110 VAC, Full Load	20
20	Vout Ripple at Vin = 275 VAC, Full Load	20
21	Vout Turn On Waveform at Vin = 110 VAC, Full Load.....	21
22	Vout Turn On Waveform at Vin = 275 VAC, Full Load.....	22
23	Vout Waveform at Vin = 230 VAC, Load Transient from 2 mA to 200 mA	23
24	Conducted Emissions as per EN55022 Class B	24

List of Tables

1	AC-DC Non-Isolated Single Phase Smart Meter SMPS Design Specifications	3
2	Bill of Materials of Complete Schematic.....	13

Trademarks

All trademarks are the property of their respective owners.

1 SMPS Design Specifications

Table 1. AC-DC Non-Isolated Single Phase Smart Meter SMPS Design Specifications

The main specifications of the SMPS are listed below:	
Input	
Voltage	110–500 VAC
Frequency	48–52 Hz
Output	
	10 V \pm 1 V
	3.3 V \pm 1%
	200 mA output current on 10 V and 2 mA on 3.3 V for full input voltage range
Standby Power(W/VA)	< 75 mW/300 mVA at 240 VAC (2 mA on 3.3 V and no load on 10 V)
Efficiency	> 65%
Overload/Short-circuit	Protected
Output overvoltage	Protected
PCB type and size	
	FR4
	Single sided 35 μ m
	69 mm x 26 mm
Isolation	Non isolated - N connected to output GND
EMI	In accordance with EN55022 - class B
EMC	Surge - IEC 61000-4-5 - 4kV
EMC	EFT - IEC 61000-4-4 - 4kV

2 Basic Principle of Buck Topology

Figure 2 shows a simplified schematic of the buck power stage with a drive circuit block included. The power switch, Q1, is a NPN bipolar transistor. The diode, D1, is usually called the freewheeling diode. The inductor, L, and capacitor, C1, make up the output filter. Resr represents the capacitor ESR and RL represents the inductor DC resistance. The resistor, RLoad, represents the load seen by the power stage output.

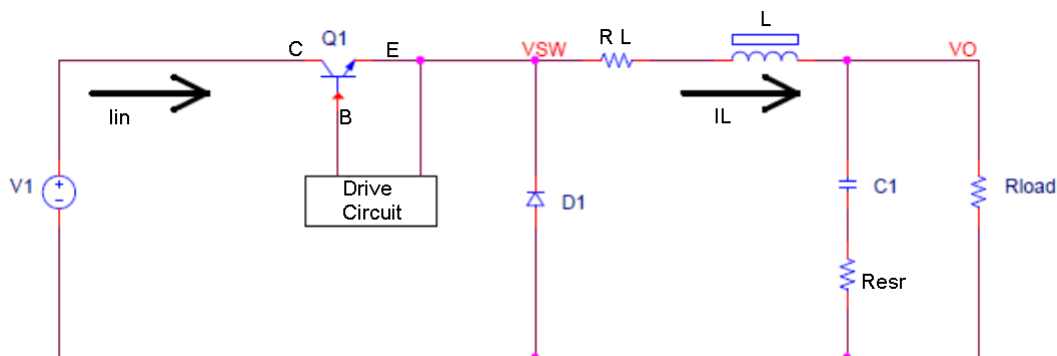


Figure 2. Buck Power Stage Schematic

During normal operation of the buck power stage, Q1 is repeatedly switched on and off with the on and off times governed by the control circuit. This switching action causes a train of pulses at the junction of Q1, D1, and L which is filtered by the L/C1 output filter to produce a DC output voltage, Vo.

A power stage can operate in continuous or discontinuous inductor current mode. Continuous inductor current mode is characterized by current flowing continuously in the inductor during the entire switching cycle in steady-state operation. Discontinuous inductor current mode is characterized by the inductor current being zero for a portion of the switching cycle. It starts at zero, reaches a peak value, and returns to zero during each switching cycle. It is very desirable for a power stage to stay in only one mode over its expected operating conditions, because the power stage frequency response changes significantly between the two modes of operation.

2.1 Buck Steady-State Discontinuous Conduction Mode Analysis

The following is a description of steady-state operation in discontinuous conduction mode – as UCC28722 operates only in this mode. A power stage operating in discontinuous conduction mode has three unique states during each switching cycle, shown in [Figure 2](#). The ON state is when Q1 is ON and D1 is OFF. The OFF state is when Q1 is OFF and D1 is ON. The IDLE state is when both Q1 and D1 are OFF. A simple linear circuit can represent each of the three states where the switches in the circuit are replaced by their equivalent circuits during each state. The circuit diagram for each of the three states is shown in [Figure 3](#).

The duration of the ON state is $T_{ON} = D \times T_S$ where D is the duty cycle, set by the control circuit, expressed as a ratio of the switch ON time to the time of one complete switching cycle, T_S . The duration of the OFF state is $T_{OFF} = D_2 \times T_S$. The IDLE time is the remainder of the switching cycle and is given as $T_S - T_{ON} - T_{OFF} = D_3 \times T_S$. These times are shown with the waveforms in [Figure 4](#).

The main result of this section is a derivation of the voltage conversion relationship for the discontinuous conduction mode buck power stage. In addition, the dc resistance of the output inductor, the output diode forward voltage drop, and the power BJT Vce drop are all assumed to be small enough to omit in analysis.

Referring to [Figure 3](#), during the ON state, the voltage applied to the right-hand side of L is simply the output voltage, V_o . The inductor current, I_L , flows from the input source, V_I , through Q1 and to the output capacitor C_1 and load resistor R_{Load} combination. During the ON state, the voltage applied across the inductor is constant and equal to $V_I - V_o$. Adopting the polarity convention for the current I_L shown in [Figure 3](#), the inductor current increases as a result of the applied voltage. Also, since the applied voltage is essentially constant, the inductor current increases linearly. This increase in inductor current during T_{ON} is illustrated in [Figure 4](#).

The amount that the inductor current increases can be calculated by using a version of the familiar relationship:

$$V_L = L \times \frac{di_L}{dt} \rightarrow \Delta I_L = \frac{V_L}{L} \times \Delta T \quad (1)$$

The inductor current increase during the ON state is given by:

$$\Delta I_L(+) = \frac{V_I - V_o}{L} \times T_{on} = \frac{V_I - V_o}{L} \times D \times T_S = IPK \quad (2)$$

The ripple current magnitude, $\Delta I_L (+)$, is also the peak inductor current, IPK .

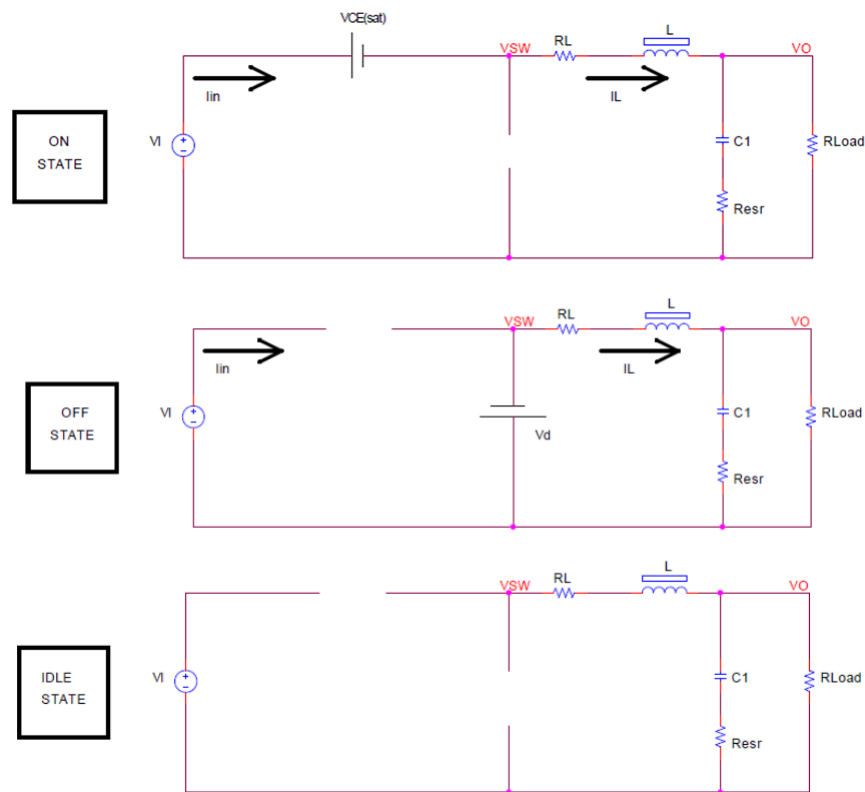


Figure 3. Buck Power Stages in Discontinuous Mode

Referring to Figure 3, when Q1 is OFF, it presents high impedance from its collector to emitter. Therefore, since the current flowing in the inductor L cannot change instantaneously, the current shifts from Q1 to D1. Due to the decreasing inductor current, the voltage across the inductor reverses polarity until rectifier D1 becomes forward biased and turns ON. The voltage on the left-hand side of L becomes zero if we neglect the forward voltage drop of diode D1 and the drop across DC resistance of the inductor. The voltage applied to the right-hand side of L is still the output voltage, V_o . The inductor current, I_L , now flows from ground through D1 and to the output capacitor C1 and load resistor R_{Load} combination. During the OFF state, the magnitude of the voltage applied across the inductor is constant and equal to V_o . Maintaining our same polarity convention; this applied voltage is negative (or opposite in polarity from the applied voltage during the ON time). Hence, the inductor current decreases during the OFF time. Also, since the applied voltage is essentially constant, the inductor current decreases linearly. This decrease in inductor current during T_{OFF} is illustrated in Figure 4.

The inductor current decrease during the OFF state is given by:

$$\Delta I_L(-) = \frac{V_o}{L} \times T_{OFF} \tag{3}$$

This quantity, $\Delta I_L(-)$, is also referred to as the inductor ripple current.

In steady state conditions, the current increase, $\Delta I_L(+)$, during the ON time and the current decrease during the OFF time, $\Delta I_L(-)$, must be equal. Otherwise, the inductor current would have a net increase or decrease from cycle to cycle which would not be a steady state condition. Therefore, Equation 2 and Equation 3 can be equated and solved for V_o to obtain the first of two equations to be used to solve for the voltage conversion ratio:

$$V_o = V_I \times \frac{T_{ON}}{T_{ON} + T_{OFF}} = V_I \times \frac{D}{D + D_2} \tag{4}$$

Now we calculate the output current (the output voltage V_o divided by the output load R_{Load}). It is the average of the inductor current.

$$I_o = I_L(\text{avg}) = \frac{V_o}{R_{\text{Load}}} = \frac{I_{PK}}{2} \times \frac{D \times T_s + D2 \times T_s}{T_s} \quad (5)$$

Now, substitute the relationship for I_{PK} into the above equation to obtain:

$$I_o = \frac{V_o}{R_{\text{Load}}} = (V_I - V_o) \times \frac{D \times T_s}{2 \times L} \times (D + D2) \quad (6)$$

We now have two equations, the one for the output current just derived and the one for the output voltage (above), both in terms of V_I , D , and $D2$. We now solve each equation for $D2$ and set the two equations equal to each other. Using the resulting equation, an expression for the output voltage, V_o , can be derived.

The discontinuous conduction mode buck voltage conversion relationship is given by:

$$V_o = V_I \times \frac{2}{1 + \sqrt{1 + \frac{4 \times K}{D^2}}} \quad (7)$$

Where K is defined as:

$$K = \frac{(2 \times L)}{R_{\text{Load}} \times T_s} \quad (8)$$

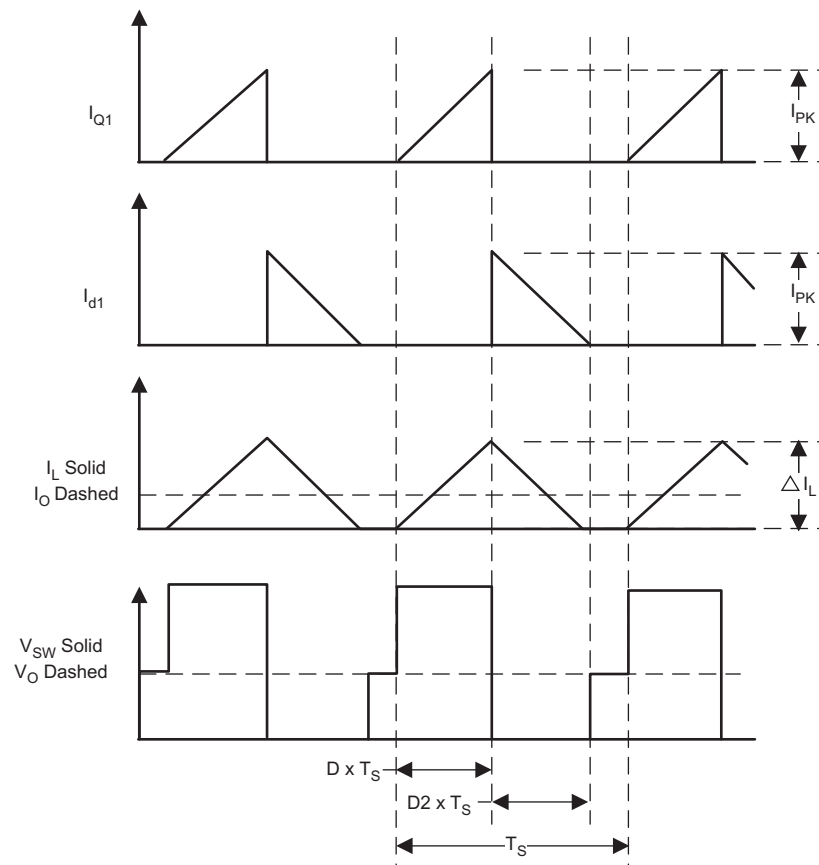


Figure 4. Discontinuous Mode Power Stage Buck Waveforms

3 Step-by-Step Design Procedure of UCC28722-Based Buck Converter

We will be referring to [Figure 6](#) for discussion on choosing the various components for the design.

3.1 AC Input Stage Components

The input stage consists of fusible resistance FR1, Varistor RT1, input rectification diode D1, the line filter network L1/ C1 and the main bulk electrolytic capacitors C2 and C3.

The input resistance FR1 provides three important functions:

- Acts as a fuse in case of any short in the power supply
- Controls the inrush current going into bulk capacitors
- Aids in differential mode attenuation

As it has to perform these three functions so flame proof and film type resistance or WWR surge resistance is recommended.

For designs up to 2 W of output power, 8.2–10 Ω 3 W is recommended for FR1.

Regulation IEC 61000-4-5 defines the surge immunity test as high power spikes caused by large inductive devices in mains. The input of the SMPS is coupled by a short duration (1.2/50 μs) pulses but high voltage (up to 4 kV). The pulses are applied between L-N and between L (N) – PE at different angles 0°, 90°, 180°, 270°, 360° of the ac voltage. For the energy meter it is applied between L-N as there is no earth.

The surge pulse causes high inrush current, quickly charging the storage capacitor in a standard SMPS. The major risk is overvoltage for input components - bulk capacitors, rectifier diode and the main BJT switch. The inrush current can damage the components- rectifier diode, fusible resistance in series in the input section. Typically, the varistors are used to absorb part of the energy and the rest is absorbed by the bulk capacitors used.

As the input AC voltage can go as high as 500 VAC, so a 510 VAC, 10-mm varistor RT1 is recommended for the design for surges up to the 4-kV level. If the application requires surge immunity up to higher levels than appropriate values and diameter of the varistor along with the input resistance should be chosen. This topic is beyond the scope of this application note.

As the output ground of the system will be same as the input neutral in case of energy meters, a half-wave rectifier comprising of D1, C2 and C3 are used. As the input AC voltage can go up to 500 VAC, so the DC voltage can reach voltage levels of up to 707 VDC. The input bulk capacitor must be able to sustain such voltage levels. There are no standard aluminum capacitors in the market suitable for this voltage, so two capacitors connected in series have been used. For a half-wave rectifier, choose net capacitance between 6–8 μF per Watt of output power. Keeping the cost and size in mind, C2 = C3 = 10 μF 400-V capacitors are chosen. TI recommends 1 A, 1000 V, 1N4007 for D1.

L1 and C1 form a differential filter attenuating the differential noise produced by the UCC28722-based buck converter. The recommended value for L1 is 2.2–4.7 mH and C1 is 47–100 nF.

3.2 Feedback Resistors

The VS divider resistors R1 and R2 determine the output voltage regulation point of the buck converter. The high-side divider resistor (R1) determines the line voltage at which the controller enables continuous DRV operation. R1 is initially determined based on desired input voltage operating threshold.

$$R1 = \frac{VIN_{min} \times \sqrt{2}}{IVSL(run)} \quad (9)$$

Where

VINmin is the AC RMS voltage to enable turn-on of the controller (run),

IVSL(run) is the run-threshold for the current pulled out of the VS pin during the switch on time

Keep the impedance at Vs pin low, < 100 kΩ, so as to be not effected by switching noise. So substituting VINmin as 25 VAC instead of 100 VAC and IVSL (run) as 225 μA, R1 comes out to be 157 kΩ. A standard value of 150 kΩ is chosen.

The low-side VS pin resistor R2 is selected based on desired Vo regulation voltage.

$$R2 = \frac{R1 \times VVSR}{(Vo + VF) - VVSR} \tag{10}$$

Where

- Vo is the converter regulated output voltage,
- VF is the output rectifier forward drop at near-zero current,
- R1 is the VS divider high-side resistance,
- VVSR is the CV regulating level at the VS input

Substituting Vo as 10 V, VF as 0.7 V, R1 as 150 kΩ, and VVSR as 4.05 V, we get R2 as 91 kΩ so standard value of 100 kΩ is chosen.

3.3 VDD Capacitance

The capacitance C4 on VDD needs to supply the device operating current until the output of the converter reaches the target minimum operating voltage in constant-current regulation. At this time, the output voltage can sustain the voltage to the UCC28722. The total output current available to the load and to charge the output capacitors is the constant-current regulation target, I_{occ} . Equation 11 is used to calculate the value of Capacitance required at the VDD pin:

$$Cdd = \left(I_{run} + \left(I_{drsmx} \times \frac{Vo}{VINmin \times \sqrt{2}} \right) \right) \times \frac{C5 \times Vo}{I_{occ} (Vddon - Vddoff - 1V)} \tag{11}$$

Where

- Idrsmx is the maximum driver source current
- Vddoff is the UVLO turn-off voltage
- Vddon is the UVLO turn-on voltage
- C5 is the output capacitor used
- Irun is the supply current in run state with Idrv = 0

Substituting Irun as 2.65 mA, Idrsmx as 41 mA, Vo as 10 V, VINmin as 100 V, C5 as 220 μF, Iocc as 220 mA, Vddon as 21 V, and Vddoff as 8 V we get Cdd as 4.58 μF. So a standard value of 4.7 uF is chosen. The timing diagram illustrating the startup of UCC28722 is shown in Figure 5.

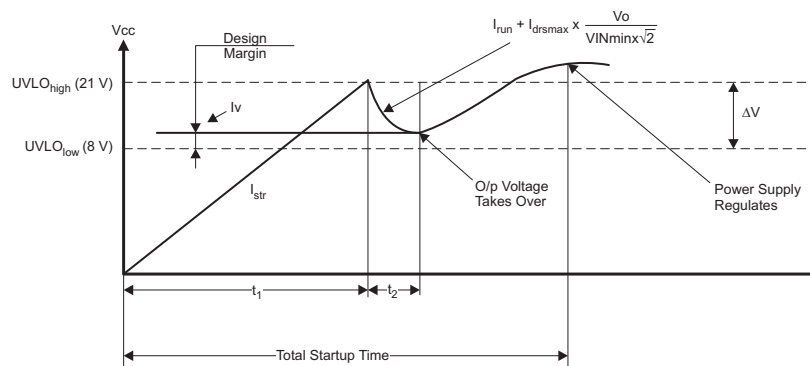


Figure 5. Timing Diagram of Startup Sequence in UCC28722

3.4 Startup Resistors and Startup Time

An external resistor connected from the bulk capacitor voltage to the VDD pin charges the VDD capacitor. The amount of startup current that is available to charge the VDD capacitor is dependent on the value of this external startup resistor. Smaller values supply more current and decrease startup time but at the expense of increasing standby power and decreasing efficiency, particularly at high input voltage and light loading.

When VDD reaches the 21-V UVLO turn-on threshold, the controller is enabled and the converter starts switching. The initial three cycles are limited to $I_{PP(min)}$. After the initial three cycles at minimum $I_{PP(min)}$, the controller responds to the condition dictated by the control law. The converter will remain in discontinuous mode during charging of the output capacitor(s), maintaining a constant output current until the output voltage is in regulation.

Once the VDD capacitor is known, there is a tradeoff to be made between startup time and overall standby input power to the converter. Faster startup time requires a smaller startup resistance, which results in higher standby input power.

$$R_{str} = \frac{\sqrt{2} \times V_{INmin}}{I_{start} + \frac{V_{DDon} \times C_{dd}}{T_{str}}} \tag{12}$$

Where:

V_{INmin} is the minimum voltage at which the converter should work

I_{start} is the startup current of UCC28722

V_{DDon} is the UVLO turn on threshold

T_{str} is the time in which the power supply should be stable at desired O/p voltage

C_{dd} is the capacitance value at VDD pin

Substituting V_{INmin} as 110 V, I_{start} as 1.5 μ A, V_{DDon} as 21 V, T_{str} as 3 s, C_{dd} as 4.7 μ F, R_{str} comes out to be 4.09 M Ω . So we split the required resistance into $R_4 = R_5 = R_6 = R_7 = 1$ M Ω . Splitting the resistance into four helps meet the required voltage rating.

R_5 and R_6 resistance midpoint is attached to the midpoint of series capacitor C_2 and C_3 . This concept serves to keep the center point of capacitors at exactly half voltage of V_{bulk} by acting as balancing resistors.

3.5 Current Sense Resistor

During startup, the converter remains in constant current mode charging the output capacitor until it comes into voltage loop or regulation. This constant current should be more than the output current required in order to charge the o/p capacitor at full load. The inductor and the output current is shown in Figure 6 for UCC28722 in buck discontinuous mode.

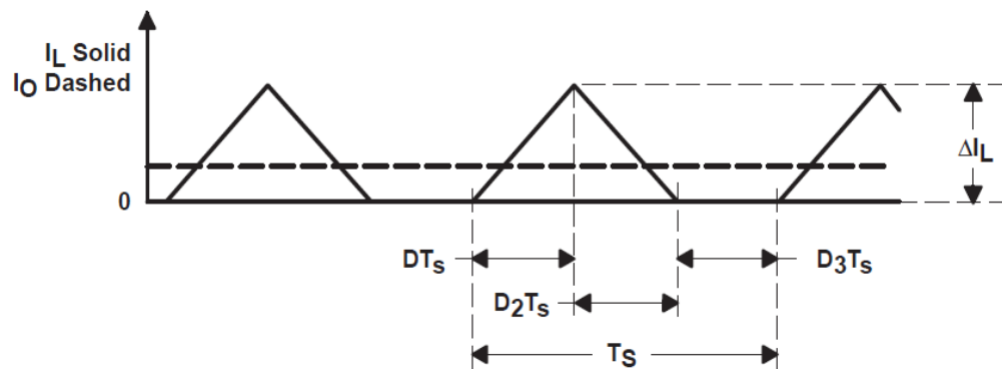


Figure 6. Discontinuous Current Waveform in UCC28722

Using Equation 5 for calculation of output current in constant current (CC) mode, substituting $I_o = I_{occc}$, $D_2 = t_{off}/T = D_{magcc}$ and ignoring D ($t_{on} \ll t_{off}$), as it is very small due to the large differential between V_{IN} and V_o :

$$I_{occc} = \frac{I_{PK}}{2} \times D_{magcc} \tag{13}$$

Reorganizing the Equation 13, the peak inductor current required is given by following equation:

$$I_{pk} = \frac{2 \times I_{occc}}{D_{magcc}} \tag{14}$$

Where

I_{occ} is the converter output constant-current target
 D_{magcc} is the maximum demagnetization duty cycle

The UCC28722 constant-current regulation is achieved by maintaining a maximum D_{mag} duty cycle of 0.425 at the maximum inductor current setting. Substituting I_{occ} as 220 mA (10% more than I_o) and D_{magcc} as 0.425, I_{pk} comes out to be 1.035 A.

During constant current mode the voltage drop across R_3 is maintained at 0.78 V. The current sense resistance R_3 is calculated using Equation 15.

$$R_3 = \frac{0.78}{I_{pk}} \quad (15)$$

Substituting the I_{pk} value gives R_3 as 0.75 Ω .

We can estimate the switching frequency during the exit from CC to CV mode during the start up phase. Using Equation 3 and substituting $\Delta I_L(-) = I_{PK}$ and reorganizing the equation, T_{OFF} is given by:

$$T_{OFF} = \frac{I_{PK}}{V_o} \times L \quad (16)$$

Substituting I_{PK} as 1.035 A, $V_o = 10$ V, $L = 800$ μ H, T_{OFF} comes out to be 82.8 μ s.

The switching frequency, F_{sw} , is given by Equation 17.

$$F_{sw} = 1/T_{sw} = \frac{D_{magcc}}{T_{OFF}} \quad (17)$$

Substituting $D_{magcc} = 0.425$ and T_{OFF} as 82.8 μ s, F_{sw} comes out to 5.1 kHz.

3.6 Output Inductor

The output inductor can be calculated by reshuffling Equation 2 as seen in Equation 18:

$$L_2 = \frac{(\sqrt{2} \times V_{INmax}) - V_o}{I_{pk}} \times T_{on} \quad (18)$$

Now there is an internal leading-edge blanking time of approximately 300 ns to eliminate sensitivity to the turn-on current spike. So the worst case is that at maximum input voltage and light or no load the on time required should be > 300 ns, that is, should be 500 ns with margin added. This implies that at maximum input voltage and maximum load T_{on} should be selected as 1.2 μ s so that it meets the minimum blanking time criteria at minimum load.

Substituting V_{INmax} as 500 VAC, I_{pk} as 1.035 A and T_{on} as 1.2 μ s, V_o as 10 V, L comes out to be 799 μ H so a standard value of 800 μ H is chosen.

3.7 Freewheeling Diode and Vdd Diode

Select D_2 , a fast rectifier diode with $PIV > 1.25 \times V_{INmax}$ and $I_F > 1.5 \times I_o$.

So 1 A, 1000 V, FR107 is chosen for the application.

The worst-case voltage across V_{dd} diode D_3 is the maximum input voltage 707 VDC, so keeping margin 1 A, 1000 V, FR107 is recommended.

3.8 Output Capacitor

In switching power supply power stages, the function of output capacitance is to store energy. The energy is stored in the capacitor's electric field due to the voltage applied. Thus, qualitatively, the function of a capacitor is to attempt to maintain a constant voltage.

The value of output capacitance of a Buck power stage is generally selected to limit output voltage ripple to the level required by the specification. Since the ripple current in the output inductor is usually already determined, the series impedance of the capacitor primarily determines the output voltage ripple. The three elements of the capacitor that contribute to its impedance (and output voltage ripple) are equivalent series resistance (ESR), equivalent series inductance (ESL), and capacitance (C).

For discontinuous inductor current mode operation, to determine the amount of capacitance needed as a function of inductor current ripple, ΔI_L , output current I_o , switching frequency, F_{sw} , and output voltage ripple, ΔV_o , the Equation 16 is used assuming all the output voltage ripple is due to the capacitor's capacitance.

$$C \geq I_o \times \frac{\left(1 - \frac{I_o}{\Delta I_L}\right)^2}{F_{sw} \times \Delta V_o} \quad (19)$$

where ΔI_L is the inductor ripple current defined as per Equation 2.

In many practical designs, to get the required ESR, a capacitor with much more capacitance than is needed must be selected.

Assuming there is enough capacitance such that the ripple due to the capacitance can be ignored, the ESR needed to limit the ripple to ΔV_o V peak-to-peak is:

$$ESR \leq \frac{\Delta V_o}{I_{pk}} \quad (20)$$

As 10-V output is targeted at relay operation, so taking $\Delta V_o = 400$ mV (< 4% of V_o) and I_{pk} as 1.035 A, ESR of capacitor required is < 0.386 Ω . So 220 μ F, 25 V with impedance of 0.13 Ω is chosen for the application.

3.9 Bipolar Junction Transistor

Bipolar junction transistor is selected based on three main specifications:

- Minimum current gain: h_{fe}
- VCE(sus) breakdown
- Current rating

The current gain required is calculated by Equation 21:

$$h_{fe} = I_{PK} / I_{drs} \quad (21)$$

Where

I_{PK} is the peak current in constant current mode

I_{drs} is the source current of the drive

Substituting $I_{pk} = 1.035$ A and I_{drs} as 37 mA, we get h_{fe} as 27.9. The current rating of the BJT should be > 1.5 \times I_{PK} and voltage should be > 1.1 \times V_{INmax} .

The KSC5026MOS, BJT is chosen for Q1 which satisfies all the above three criteria.

3.10 LDO for 3.3 V

3.3 V is required for powering the microcontroller and its peripherals in energy meters. As the meter will be working mostly at 3.3 V at 2–3 mA with no load on 10 V, low quiescent current LDO is required in order to target low standby power. The TLV70433DBVR with quiescent current of 3.2 μA is chosen for the application.

Figure 7 shows the schematic of the PMP7668 non-isolated buck converter.

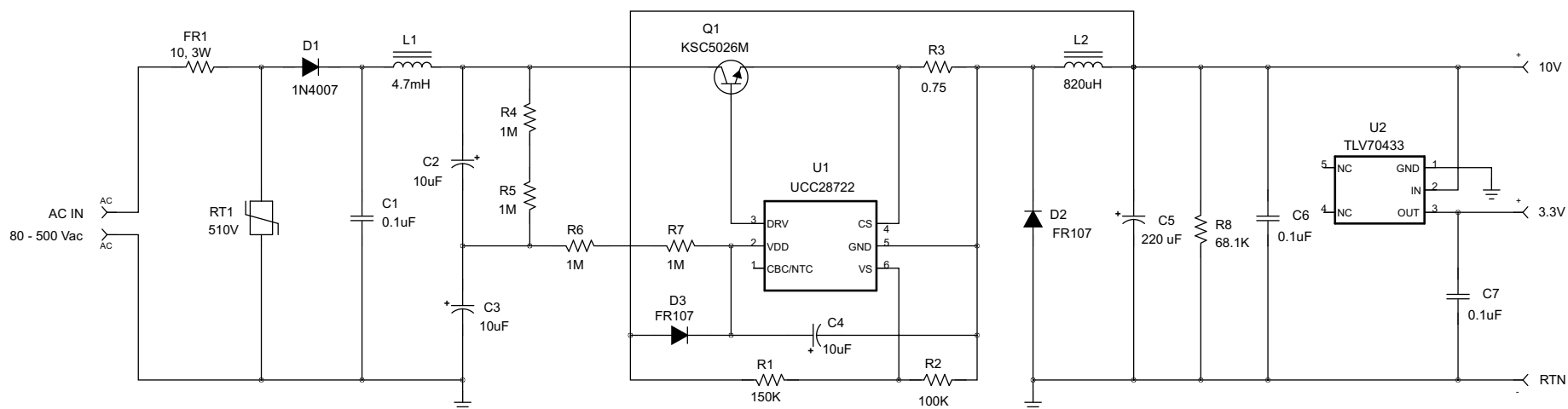


Figure 7. Complete Schematic of the PMP7668 Non-Isolated Buck Converter

4 Bill of Materials

Table 2 lists the bill of materials.

Table 2. Bill of Materials of Complete Schematic

Qty	Reference	Value	Description	Part Number	Manufacturer	Size
1	C1	0.1 μ F	Capacitor, Leaded, 760 VDC, \pm 10%	PHE840MA6100KA04R17	Kemet	0.157 x 0.512 inch
2	C2, C3	10 μ F	Capacitor, Alum Electrolytic 400V, \pm 20%	UCA2G100MPD1TD	Nichicon	10.00 mm Dia
1	C4	10 μ F	Capacitor, Alum Elect, 25V, \pm 20%	Std	Std	5 x 11 mm
1	C5	220 μ F	Capacitor, Alum Electrolytic, 25V, \pm 20%	25YXG220MEFC8X11.5	Rubycon	8 x 11.5 mm
2	C6, C7	0.1 μ F	Capacitor, Ceramic Chip, X7R, 50V, \pm 10%	Std	Std	805
1	D1	1N4007	Diode, Rectifier, 1000V, 1A	1N4007	Diodes	DO-41
2	D2, D3	FR107	Diode, Fast, 1000V, 1A	FR107	Fairchild	DO-41
1	FR1	10	Film resistor, 3W	Std	Std	Std
1	L1	4.7mH	Inductor, 150mA, 25 Ω	744741472	Würth Elektronik	8.5 x 5.5mm
1	L2	820 μ H	Inductor, 0.7A, 1.56 Ω	7447728215	Würth Elektronik	7.8 x 9.5mm
1	Q1	KSC5026M	Trans, NPN Medium Power, 800V, 1.5A	KSC5026MOS	Fairchild	TO-126
1	R1	150K	Resistor, Chip, 1/4W, 1%	Std	Std	1206
1	R2	100K	Resistor, Chip, 1/8W, 1%	Std	Std	805
1	R3	0.75	Resistor, Chip, 1/2W, 5%	CRL1206-FW-R750ELF	Bourns	1206
4	R4–R7	1M	Resistor, Chip, 1/4W, 5%	Std	Std	1206
1	R8	68.1K	Resistor, Chip, 1/8W, 1%	Std	Std	805
1	RT1	510V	MOV, 510VAC	MOV-10D821KTR	Bourns	10mm dia
1	U1	UCC28722	IC, CV/CC PWM With Primary Side Regulation	UCC28722DBV	TI	SOT-23
1	U2	TLV70433	IC, 24-V Input, 150 mA, Ultralow IQ LDO Regulator	TLV70433DBV	TI	SOT-23

5 PCB Details

The converter is assembled on a single layer 69 × 26 mm, 35 μm, FR4 PCB. The PCB top silk screen (Figure 8), PCB bottom silk screen (Figure 9), and PCB composite layout (Figure 10) along with the position of the components are illustrated in the following images.

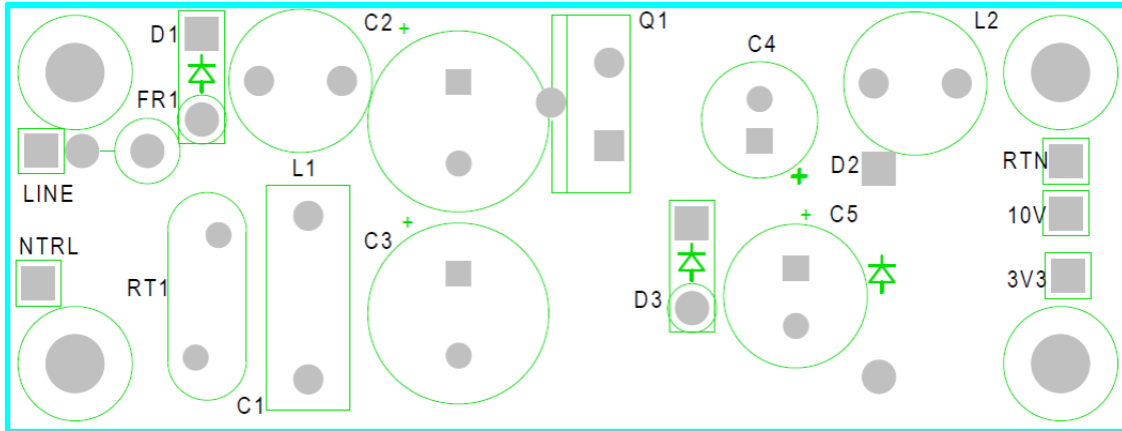


Figure 8. PCB Top Silk Screen

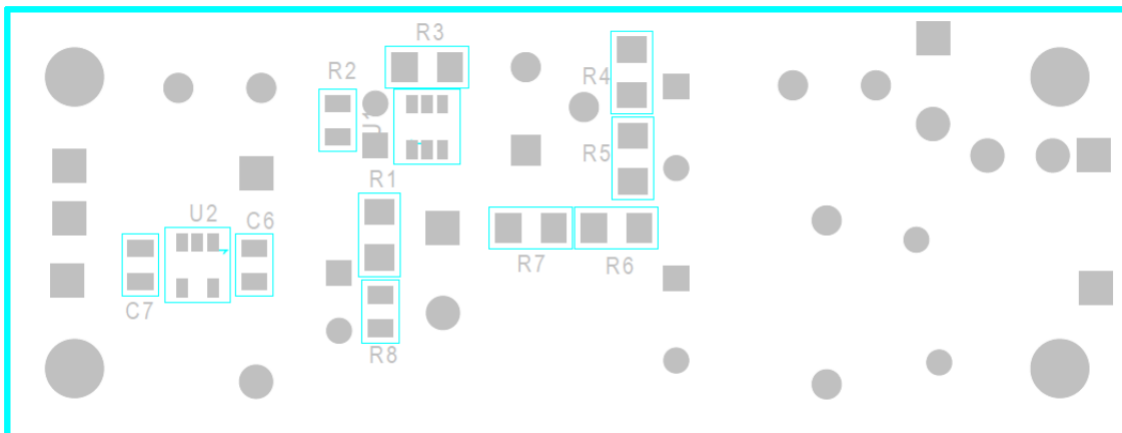


Figure 9. PCB Bottom Silk Screen

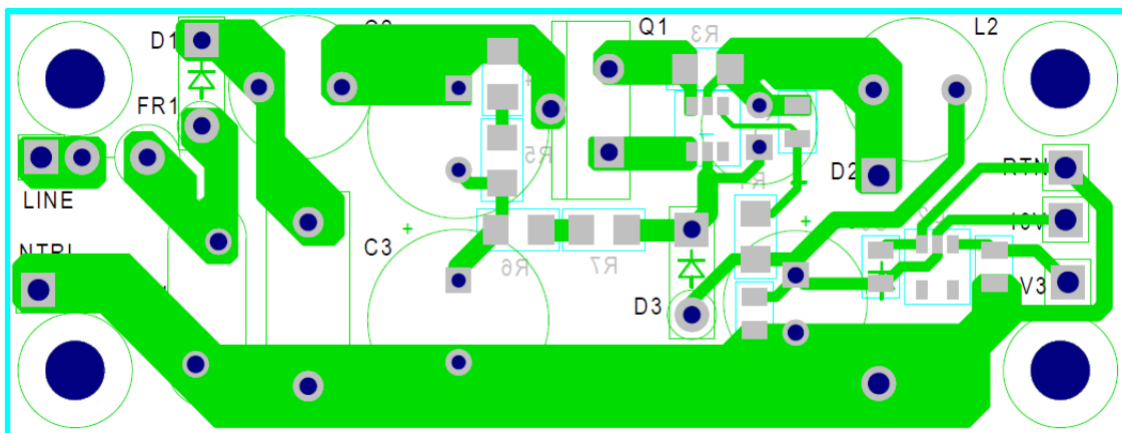


Figure 10. PCB Composite Layout

6 Conclusion

This document shows that it is possible to implement a low power, non-isolated SMPS operating in a buck converter topology for wide input range (100–500 VAC), thanks to the new PSR CV CC PWM controller, UCC28722 which can drive a low cost BJT.

7 References

1. *UCC28722 Constant-Voltage, Constant-Current Controller With Primary-Side Regulation, BJT Drive* datasheet ([SLUSBL7A](#))
2. *Understanding Buck Power Stages in Switch mode Power Supplies* ([SLVA057](#))
3. *Application Report-UCC28722/UCC28720 5W USB BJT Flyback Design* ([SLUA0700](#))

Experimental Results

Efficiency was measured for 10 V/200 mA for input 110–275 VAC and 400–705 VDC.

A.1 Efficiency and Regulation Performance Data

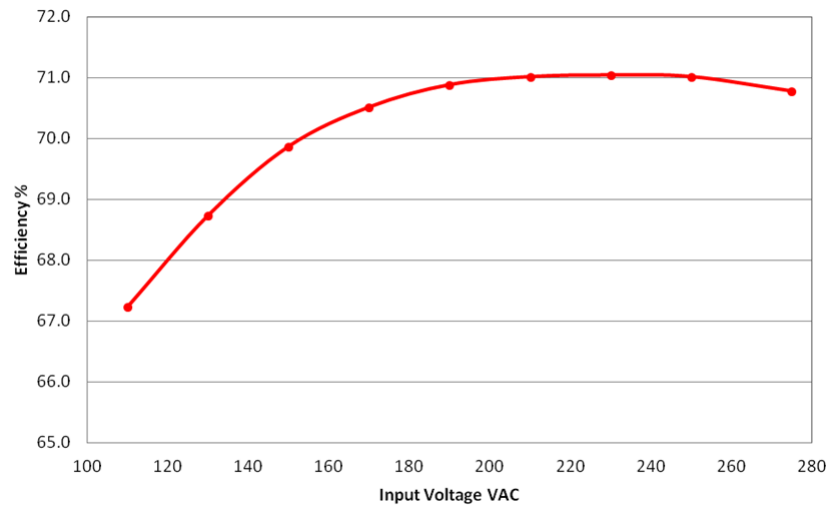


Figure 11. Efficiency vs AC I/p Voltage (110 V–275 V)

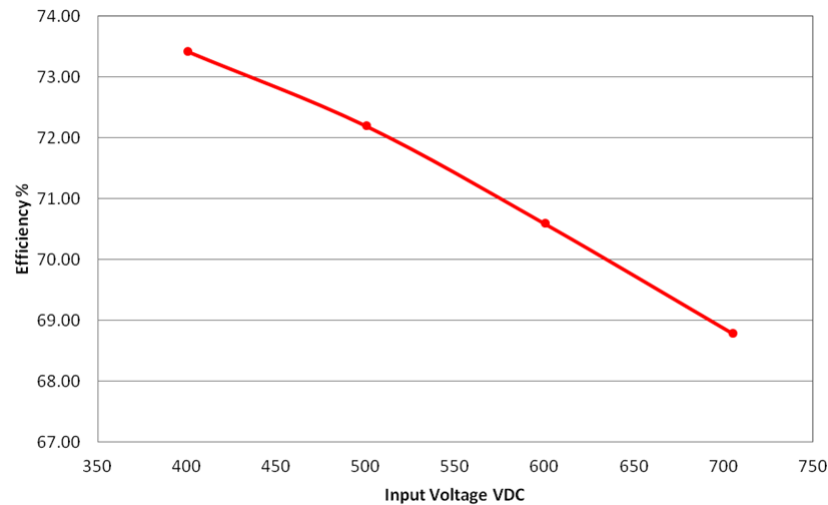


Figure 12. Efficiency vs DC I/p Voltage (400 V–705 V)

Efficiency was measured for variation in load from 2 mA to 220 mA on 10-V output at 325 VDC.

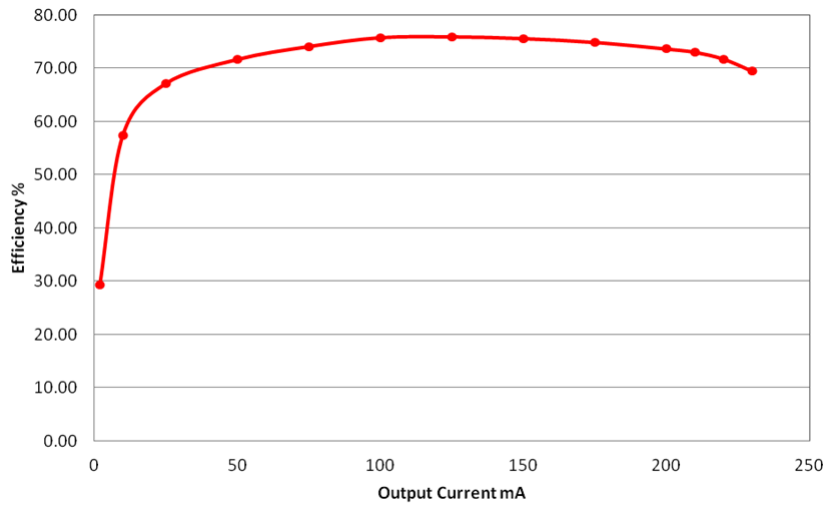


Figure 13. Efficiency vs O/p Load Current at 325 VDC

Output 10-V variation was plotted with change in load current from 2 mA to 220 mA at 325 V DC input.

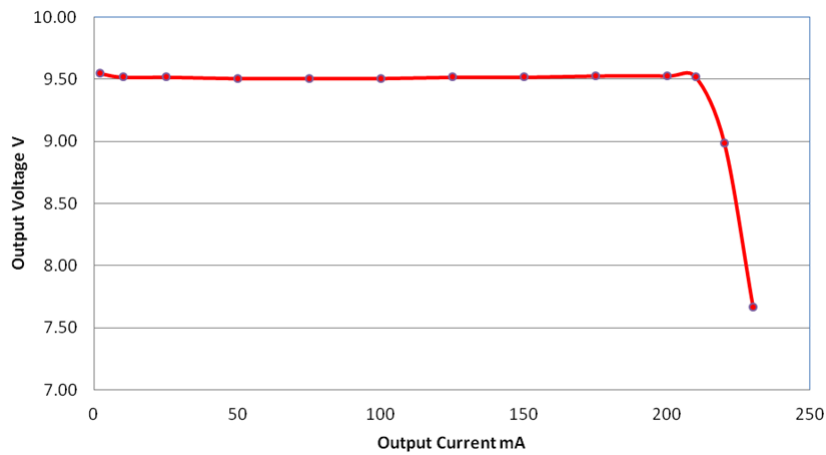


Figure 14. O/p Voltage Variation vs O/p Load Current at 325 VDC

A.2 Switch Node Waveforms

Waveform at SW node was observed along with the collector current for 110 VAC input and 10-V output loaded to 200 mA. The settings of the oscilloscope are as follows:

Red trace: SW node voltage, 50 V/div; **Blue trace:** collector current, 500 mA/div.

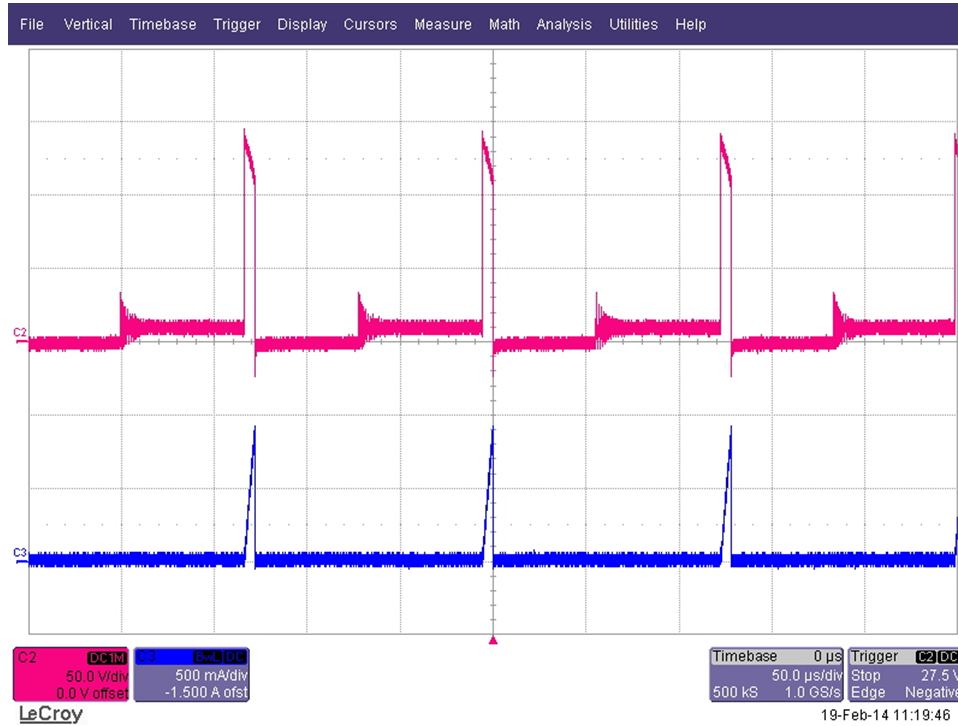


Figure 15. SW Node Waveform and Collector Current at $V_{in} = 110$ VAC, Full Load

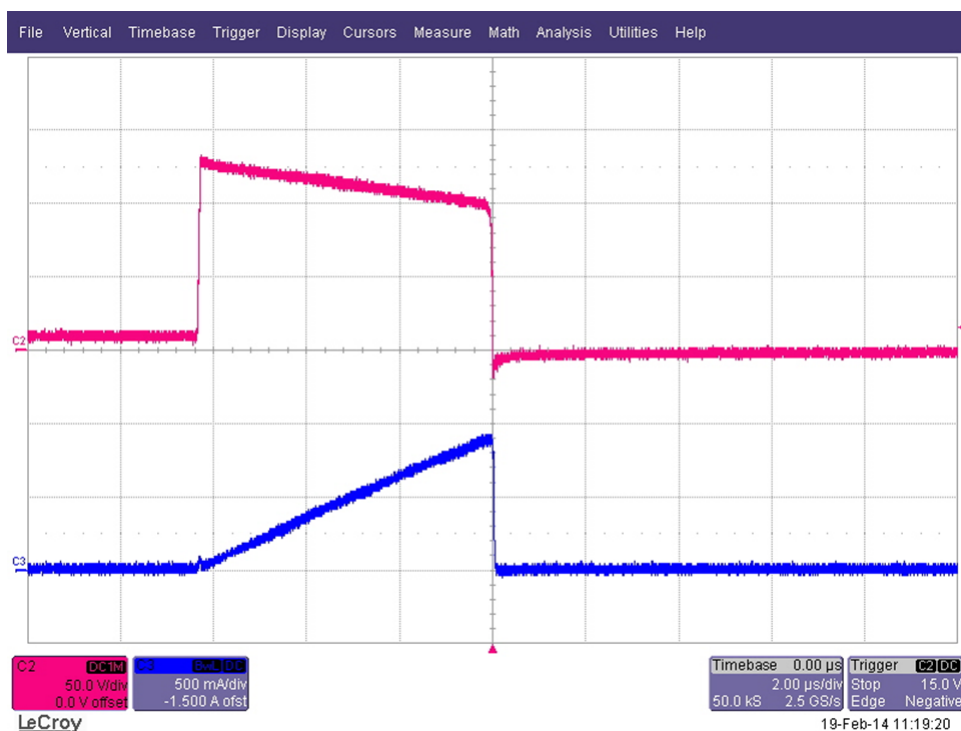


Figure 16. Zoomed SW Waveform and Collector Current at $V_{in} = 110$ VAC, Full Load

Waveform at SW node was observed along with the collector current for 275 VAC input and 10-V output loaded to 200 mA. The settings of the oscilloscope are as follows:

Red trace: SW node voltage, 100 V/div; **Blue trace:** collector current, 500 mA/div.

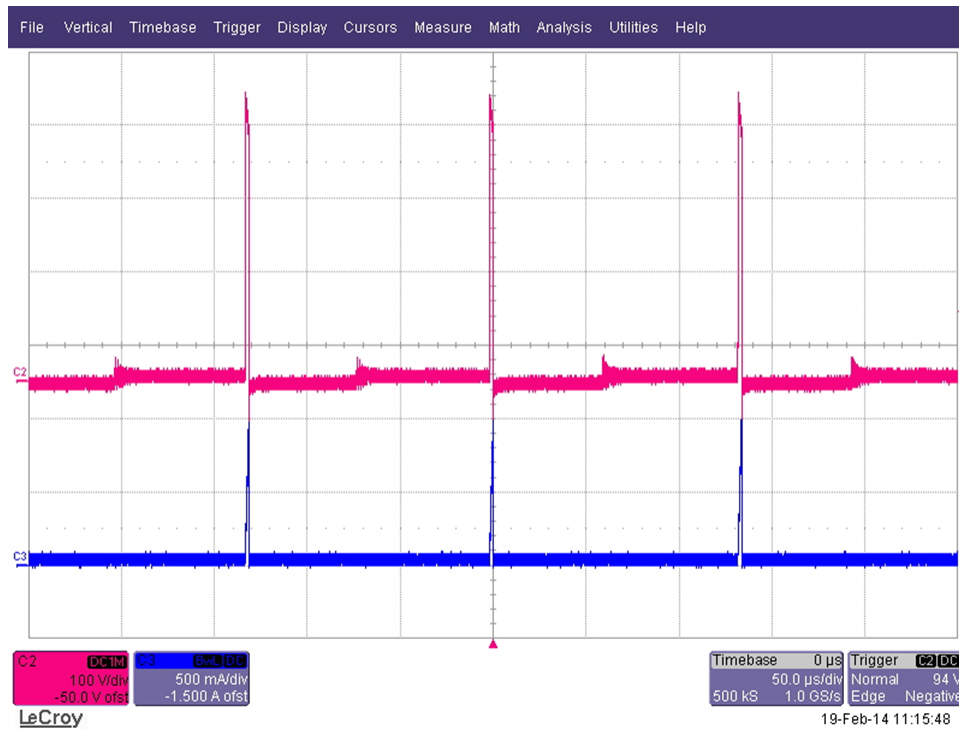


Figure 17. SW node Waveform and Collector Current at $V_{in} = 275$ VAC, Full Load

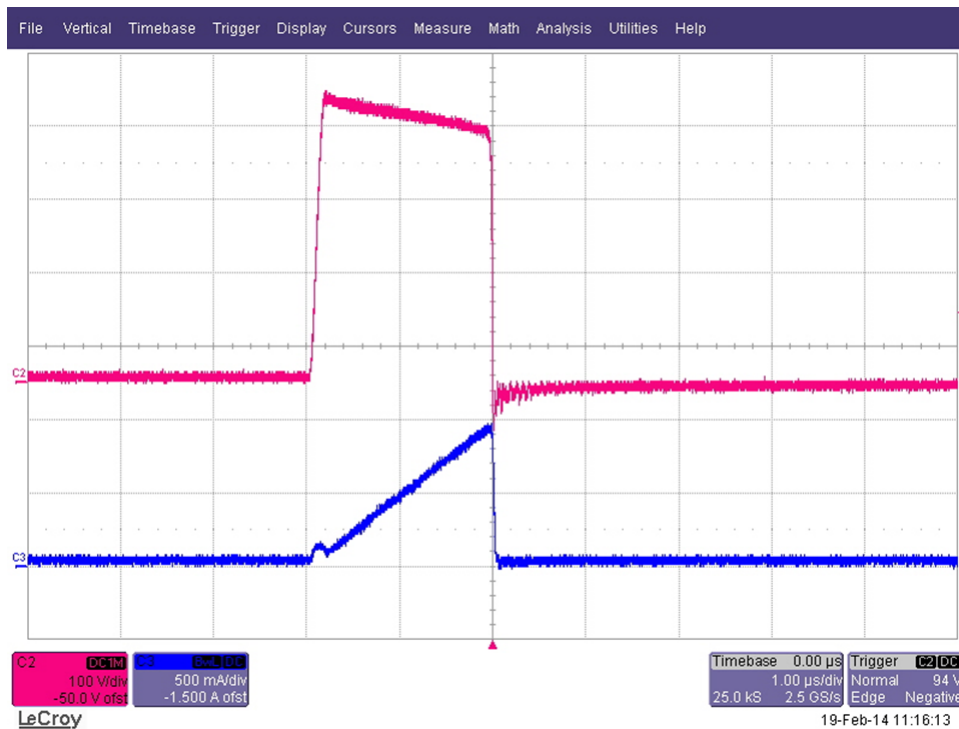


Figure 18. Zoomed SW Waveform and Collector Current at $V_{in} = 275$ VAC, Full Load

A.3 Vout Ripple

Ripple is observed at 10-V output loaded to 200 mA at 110 VAC and 275 VAC.

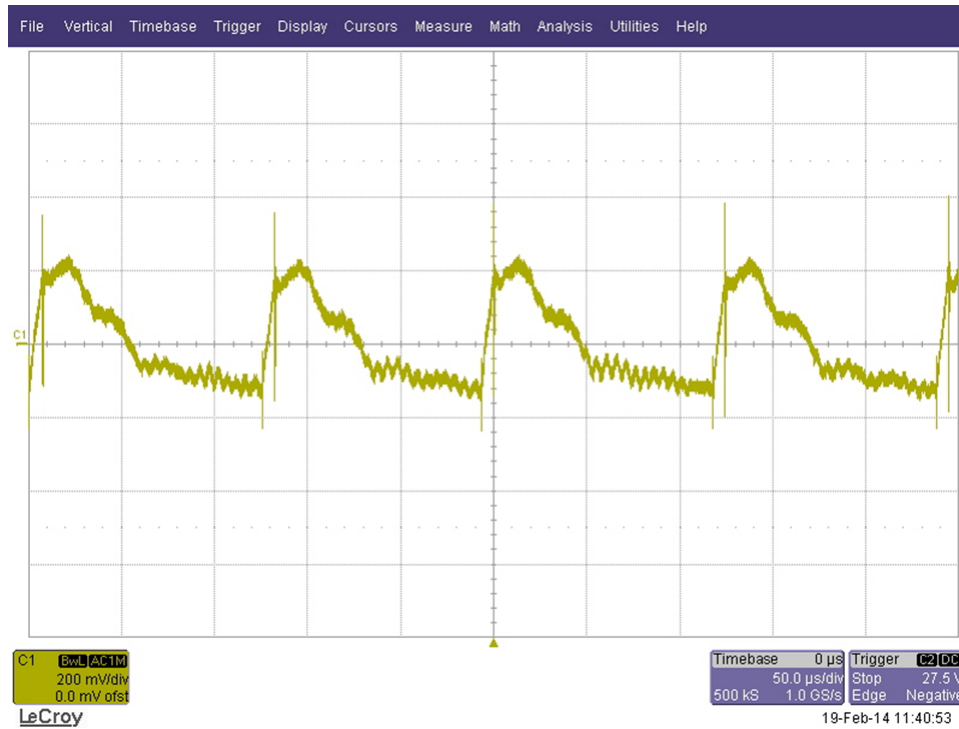


Figure 19. Vout Ripple at Vin = 110 VAC, Full Load



Figure 20. Vout Ripple at Vin = 275 VAC, Full Load

A.4 Vout Turn On Characteristics

The 10-V output turn on at 200 mA was recorded at 110 VAC along with DC bus. The settings of CRO are as follows:

Red trace: Input DC bus, 50 V/div; Yellow trace: Output voltage, 5 V/div.

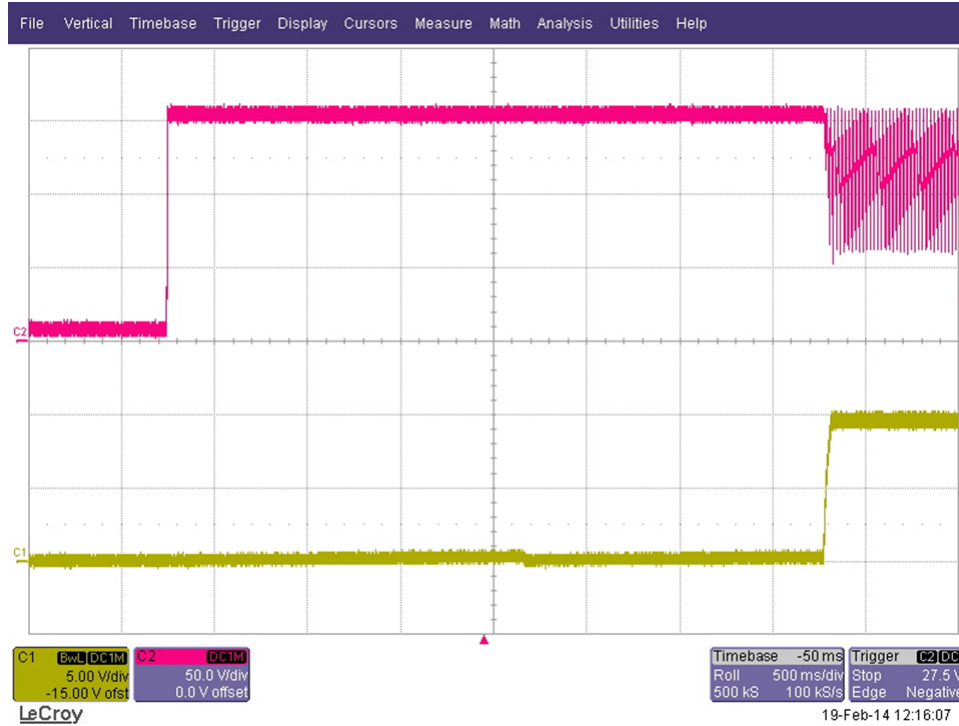


Figure 21. Vout Turn On Waveform at Vin = 110 VAC, Full Load

The 10-V output turn on at 200 mA was recorded at 275 VAC along with DC bus. The settings of CRO are as follows:

Red trace: Input DC bus, 100 V/div; Yellow trace: Output voltage, 2 V/div.

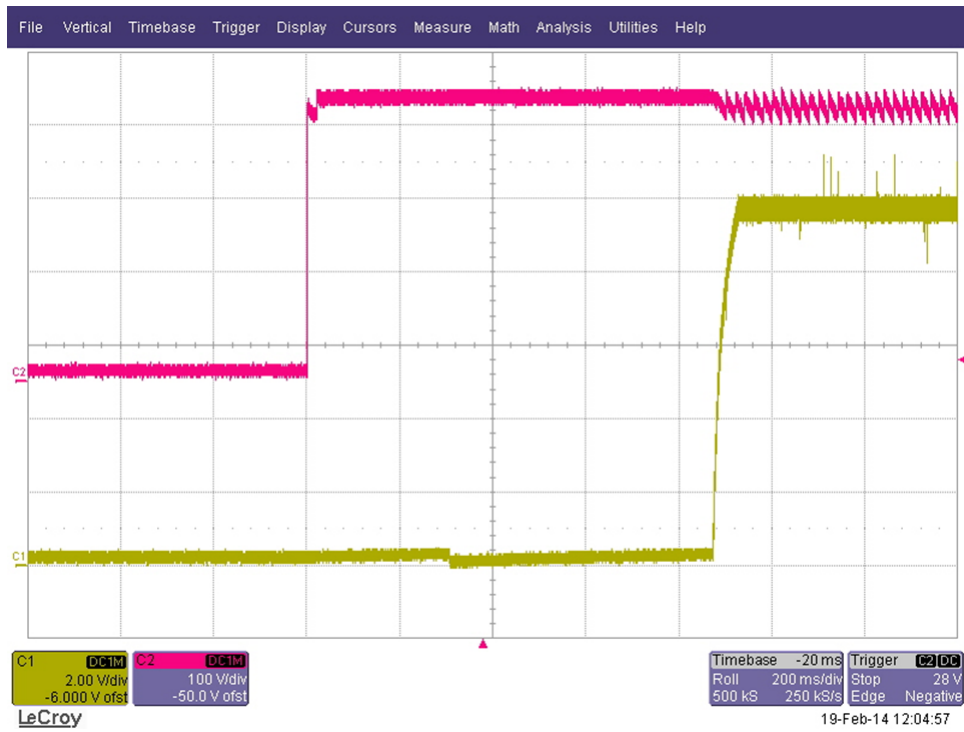


Figure 22. Vout Turn On Waveform at Vin = 275 VAC, Full Load

A.5 Vout Transient Response

Vin = 230 VAC, load transient from 2 mA to 200 mA at 10-V output.



Figure 23. Vout Waveform at Vin = 230 VAC, Load Transient from 2 mA to 200 mA

A.6 Conducted Emissions

230 VAC input, 200-mA resistive load connected to PSU with short leads. The conducted emissions in a pre-compliance test set-up were compared against EN55022 class B limits and found to meet them comfortably.

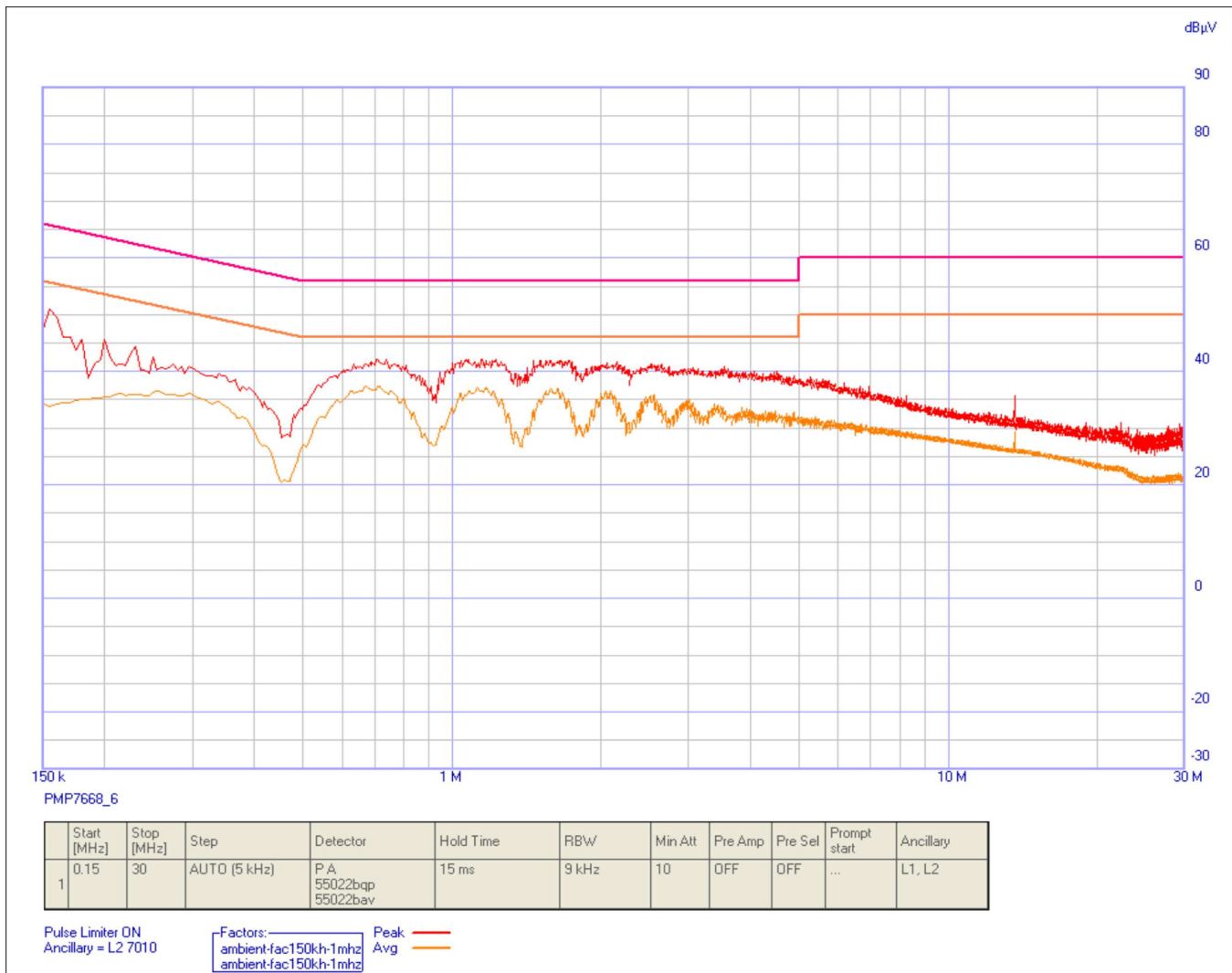


Figure 24. Conducted Emissions as per EN55022 Class B

A.7 Standby Power and VA

The standby power and VA was noted at 240 VAC input with a 2-mA load on 3.3 V and no load on 10 V. The results were in accordance with the target specifications.

Power consumption = 59 mW

VA = 242 mVA

A.8 Surge Test as per IEC61000-4-5

The 4-kV surge test as per IEC61000-4-5 was performed on the board with no failures.

A.9 EFT Test as per IEC61000-4-4

IEC 61000-4-4 defines the burst immunity test as fast switching disturbance presented in the mains. This test means the high frequency, high voltage 4 kV, very short pulses (50 ns) are applied between the input line and neutral. The possible impact seen in the SMPS is unstable operation, that is, restarting of the SMPS or latching of the SMPS.

The 4-kV burst test was performed on the board with no failures.

Revision History

NOTE: Page numbers for previous revisions may differ from page numbers in the current version.

Changes from Original (June 2014) to A Revision	Page
• Changed incorrect part number to PMP7668 globally.....	1

IMPORTANT NOTICE FOR TI DESIGN INFORMATION AND RESOURCES

Texas Instruments Incorporated ("TI") technical, application or other design advice, services or information, including, but not limited to, reference designs and materials relating to evaluation modules, (collectively, "TI Resources") are intended to assist designers who are developing applications that incorporate TI products; by downloading, accessing or using any particular TI Resource in any way, you (individually or, if you are acting on behalf of a company, your company) agree to use it solely for this purpose and subject to the terms of this Notice.

TI's provision of TI Resources does not expand or otherwise alter TI's applicable published warranties or warranty disclaimers for TI products, and no additional obligations or liabilities arise from TI providing such TI Resources. TI reserves the right to make corrections, enhancements, improvements and other changes to its TI Resources.

You understand and agree that you remain responsible for using your independent analysis, evaluation and judgment in designing your applications and that you have full and exclusive responsibility to assure the safety of your applications and compliance of your applications (and of all TI products used in or for your applications) with all applicable regulations, laws and other applicable requirements. You represent that, with respect to your applications, you have all the necessary expertise to create and implement safeguards that (1) anticipate dangerous consequences of failures, (2) monitor failures and their consequences, and (3) lessen the likelihood of failures that might cause harm and take appropriate actions. You agree that prior to using or distributing any applications that include TI products, you will thoroughly test such applications and the functionality of such TI products as used in such applications. TI has not conducted any testing other than that specifically described in the published documentation for a particular TI Resource.

You are authorized to use, copy and modify any individual TI Resource only in connection with the development of applications that include the TI product(s) identified in such TI Resource. NO OTHER LICENSE, EXPRESS OR IMPLIED, BY ESTOPPEL OR OTHERWISE TO ANY OTHER TI INTELLECTUAL PROPERTY RIGHT, AND NO LICENSE TO ANY TECHNOLOGY OR INTELLECTUAL PROPERTY RIGHT OF TI OR ANY THIRD PARTY IS GRANTED HEREIN, including but not limited to any patent right, copyright, mask work right, or other intellectual property right relating to any combination, machine, or process in which TI products or services are used. Information regarding or referencing third-party products or services does not constitute a license to use such products or services, or a warranty or endorsement thereof. Use of TI Resources may require a license from a third party under the patents or other intellectual property of the third party, or a license from TI under the patents or other intellectual property of TI.

TI RESOURCES ARE PROVIDED "AS IS" AND WITH ALL FAULTS. TI DISCLAIMS ALL OTHER WARRANTIES OR REPRESENTATIONS, EXPRESS OR IMPLIED, REGARDING TI RESOURCES OR USE THEREOF, INCLUDING BUT NOT LIMITED TO ACCURACY OR COMPLETENESS, TITLE, ANY EPIDEMIC FAILURE WARRANTY AND ANY IMPLIED WARRANTIES OF MERCHANTABILITY, FITNESS FOR A PARTICULAR PURPOSE, AND NON-INFRINGEMENT OF ANY THIRD PARTY INTELLECTUAL PROPERTY RIGHTS.

TI SHALL NOT BE LIABLE FOR AND SHALL NOT DEFEND OR INDEMNIFY YOU AGAINST ANY CLAIM, INCLUDING BUT NOT LIMITED TO ANY INFRINGEMENT CLAIM THAT RELATES TO OR IS BASED ON ANY COMBINATION OF PRODUCTS EVEN IF DESCRIBED IN TI RESOURCES OR OTHERWISE. IN NO EVENT SHALL TI BE LIABLE FOR ANY ACTUAL, DIRECT, SPECIAL, COLLATERAL, INDIRECT, PUNITIVE, INCIDENTAL, CONSEQUENTIAL OR EXEMPLARY DAMAGES IN CONNECTION WITH OR ARISING OUT OF TI RESOURCES OR USE THEREOF, AND REGARDLESS OF WHETHER TI HAS BEEN ADVISED OF THE POSSIBILITY OF SUCH DAMAGES.

You agree to fully indemnify TI and its representatives against any damages, costs, losses, and/or liabilities arising out of your non-compliance with the terms and provisions of this Notice.

This Notice applies to TI Resources. Additional terms apply to the use and purchase of certain types of materials, TI products and services. These include; without limitation, TI's standard terms for semiconductor products (<http://www.ti.com/sc/docs/stdterms.htm>), [evaluation modules](#), and [samples](http://www.ti.com/sc/docs/sampterm.htm) (<http://www.ti.com/sc/docs/sampterm.htm>).

Mailing Address: Texas Instruments, Post Office Box 655303, Dallas, Texas 75265
Copyright © 2017, Texas Instruments Incorporated